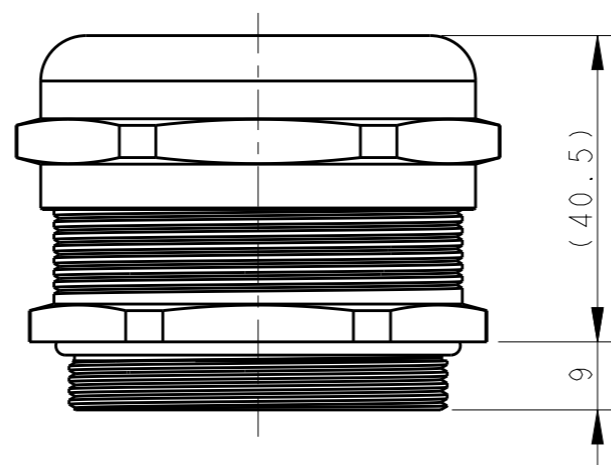
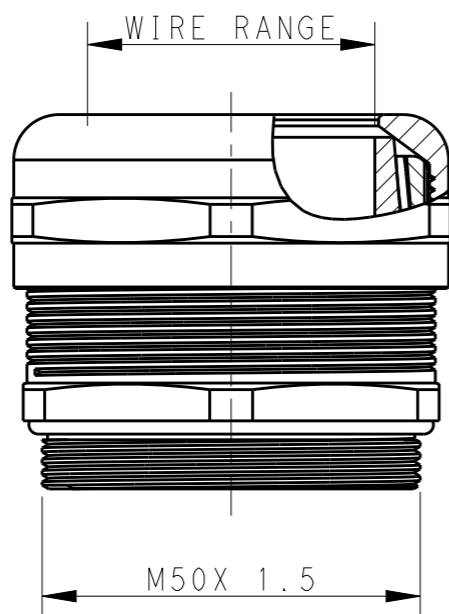


REVISIONS

P	LTR	DESCRIPTION	DATE	DWN	APVD
	A	INITIAL RELEASE	03MAY2017	DW	CW

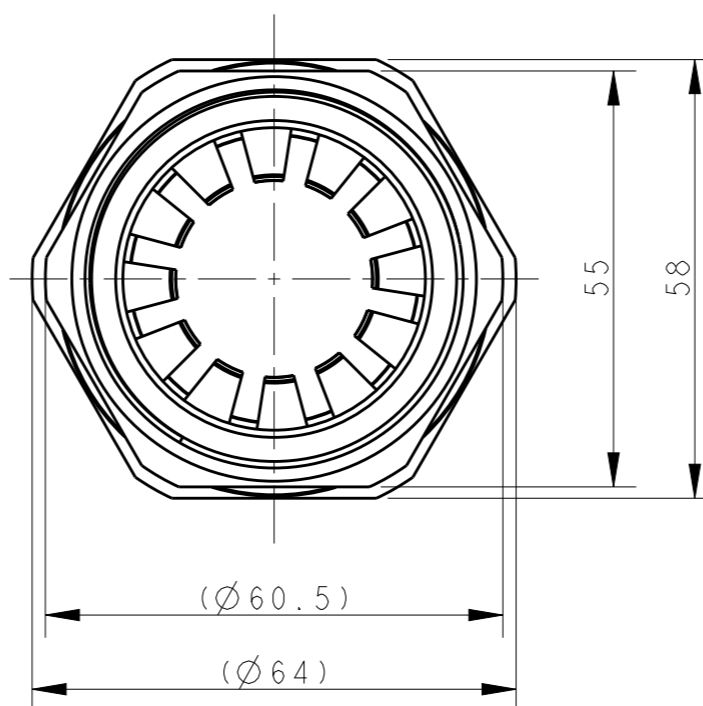


SCALE 1:2



NOTES/注解:

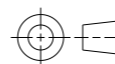
1. TECHNICAL CHARACTERISTICS/技术参数:
- SHELL MATERIAL/主体材料: NICKEL PLATED BRASS/铜镀镍
 - SEAL MATERIAL/密封材料: RUBBER, BLACK
 - PINCH RING MATERIAL/夹紧件材料: NYLON, GREY
 - OPERATION TEMPERATURE/工作温度: -40°C - +100°C
 - PROTECTION DEGREE/防护等级: IP68
 - WIRE RANGE/夹线范围: 30-38 mm



T3707500103-000	DLX-50-MC (30~38) 电磁屏蔽金属接头 M50 (30~38)
PART NUMBER 料号	PART DESCRIPTION 描述

THIS DRAWING IS A CONTROLLED DOCUMENT.

DIMENSIONS:
mm



TOLERANCES UNLESS OTHERWISE SPECIFIED:

0 PLC	±-
1 PLC	±-
2 PLC	±-
3 PLC	±-
4 PLC	±-
ANGLES	±-
FINISH	-

MATERIAL
-

DWN 03MAY2017
DAVID WANG

CHK 03MAY2017
CHRIS WANG

APVD 03MAY2017
XIANG XU

PRODUCT SPEC -

APPLICATION SPEC -

WEIGHT -

CUSTOMER DRAWING



TE Connectivity

NAME
DLX-50-MC (30~38)

SIZE A3	CAGE CODE -	DRAWING NO T3707500103000	RESTRICTED TO -
------------	----------------	------------------------------	--------------------

SCALE 1:1 SHEET 1 OF 1 REV A