

## Technical Data

### Construction

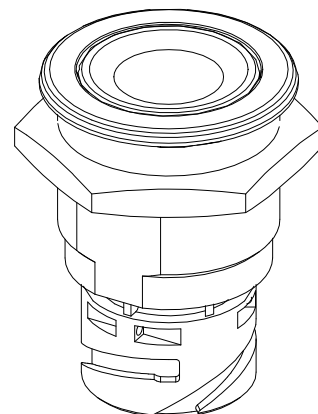
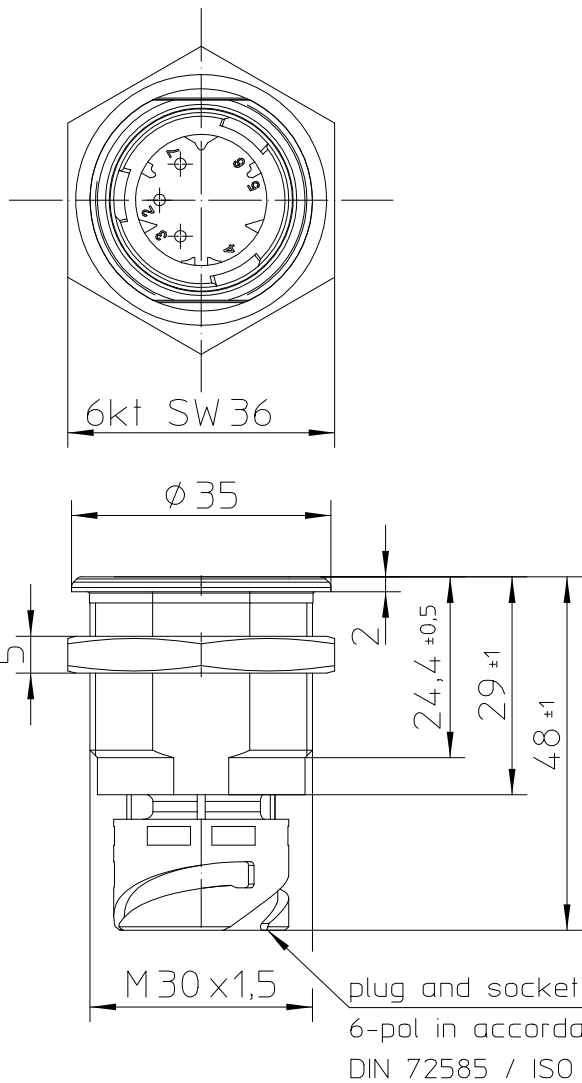
Socket material ..... Pa black  
 Button material ..... Pmma green  
 Protection interior ..... IP67 IEC 60529  
 connector..... IP00 IEC 60529  
 Max. torque ..... max. 5 Nm  
 Weight ..... ca. 35g

### Mechanical Data

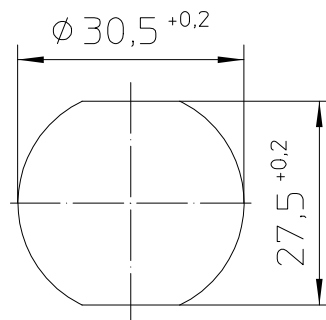
Pre travel ..... 1,5±0,5mm  
 Total travel ..... 3-0,5mm  
 Operating force ..... 30 to 45N  
 Current carrying parts ..... Cu-alloy  
 Contact material ..... Ag-alloy  
 Mechanical life ..... 100 000 cycles  
 Vibration ..... TBA  
 Temperature Range ..... -30°C to +90°C

### Electrical Data

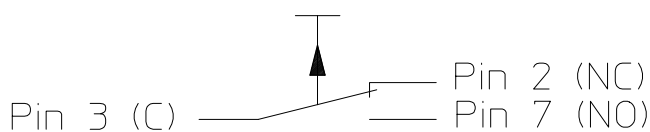
Voltage Range ..... 9VDC to 32VDC  
 Electrical load ..... 10mA to 5A



### Mounting Dimensions



### Circuit Diagram



For this drawing we reserve the copyright in accordance with DIN ISO 16016

	Date	Name
Create	13.01.2012	Drech
Edited	15.02.2019	Hamar
Check	18.02.2019	Baumg

mm	Scale
↔	1:1
General Tolerances	
DIN ISO 2768 cL	



Drawing No:	TS-211-GN11
NSN:	