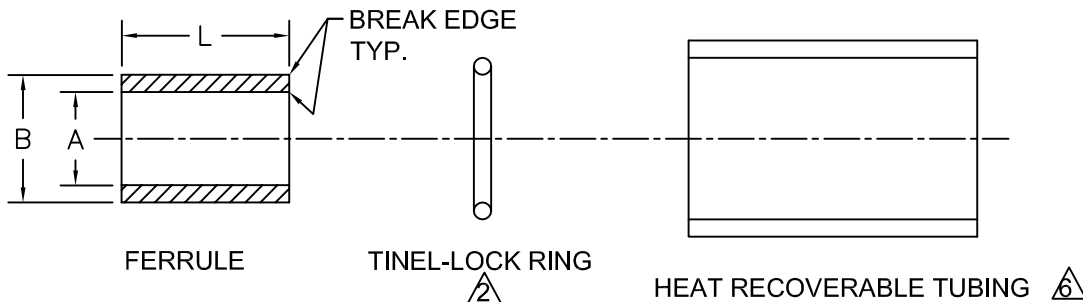


TYCO ELECTRONICS RESERVES THE RIGHT TO AMEND THIS DRAWING AT ANY TIME. USERS SHOULD EVALUATE THE SUITABILITY OF THE PRODUCT FOR THEIR APPLICATION.

REVISIONS

LTR	DESCRIPTION	DATE	APPROVED
NONE	PER ECO 5566	10SEP87	T.B
A	REVISED PER ECO-09-004218	23FEB09	A. BUI

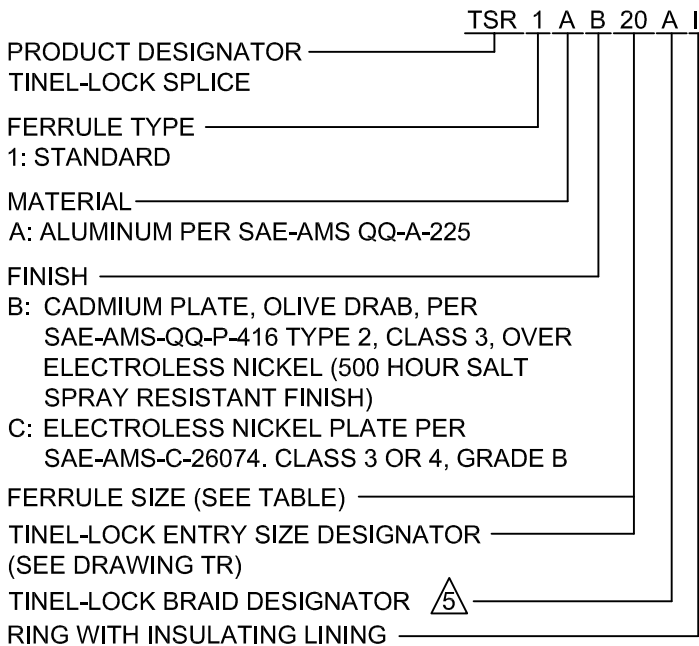


NOTES:

- THIS PRODUCT IS DESIGNED TO SPLICE GROUND STRAPS AND/OR BRAIDED CABLE SHIELDING TO BRAIDED SHIELDING.
- SEE DRAWING TR FOR DETAIL ON TINEL-LOCK RING. ALL RINGS ARE MARKED WITH THERMOCHROMIC PAINT WHICH CHANGES COLOR WHEN INSTALLATION TEMPERATURE IS REACHED.
- FERRULE TO BE PERMANENTLY MARKED WITH ASSEMBLY (TSR) P.N. (LESS BRAID DESIGNATOR AND "I") AND CODE IDENT. NUMBER (EG:TSR1A820 06090). ALL MARKING SHALL BE IN ACCORDANCE WITH MIL-STD-130.
- CONSULT FACTORY FOR ADDITIONAL SIZES. MATERIALS AND FINISHES.
- SEE TSR SELECTION GUIDE. MSG-115.
- HEAT RECOVERABLE ADHESIVE LINED PLASTIC TUBING TO IMMOBILIZE FERRULE AFTER INSTALLATION.

PART NUMBERING SYSTEM

FERRULE SIZE	A DIA	B DIA	L
04	.293 [7.44]	.373 [9.47]	.49 [12.5]
	.285 [7.23]	.369 [9.37]	.45 [11.4]
05	.354 [8.99]	.435 [11.05]	.49 [12.5]
	.343 [8.71]	.430 [10.92]	.45 [11.4]
06	.417 [10.59]	.498 [12.65]	.49 [12.5]
	.409 [10.39]	.493 [12.52]	.45 [11.4]
07	.476 [12.09]	.557 [14.15]	.65 [16.5]
	.468 [11.89]	.552 [14.02]	.60 [15.2]
08	.539 [13.69]	.620 [15.75]	.65 [16.5]
	.531 [13.49]	.615 [15.62]	.60 [15.2]
10	.661 [16.79]	.743 [18.87]	1.03 [26.2]
	.653 [16.59]	.737 [18.72]	.97 [24.6]
12	.784 [19.91]	.866 [22.00]	1.03 [26.2]
	.776 [19.71]	.860 [21.84]	.97 [24.6]
14	.908 [23.06]	.991 [25.17]	1.30 [33.0]
	.898 [22.81]	.984 [24.99]	1.20 [30.5]
16	1.032 [26.21]	1.115 [28.32]	1.30 [33.0]
	1.022 [25.96]	1.108 [28.14]	1.20 [30.5]
18	1.156 [29.36]	1.239 [31.47]	1.30 [33.0]
	1.146 [29.11]	1.232 [31.29]	1.20 [30.5]
20	1.281 [32.54]	1.364 [34.65]	1.30 [33.0]
	1.271 [32.28]	1.357 [34.47]	1.20 [30.5]



If this document is printed it becomes uncontrolled. Check for the latest revision

© 1987-2009 Tyco Electronics Corporation. All rights reserved.

CUSTOMER DRAWING

UNLESS OTHERWISE SPECIFIED DIMENSIONS ARE IN INCHES. [METRIC DIMENSIONS ARE IN BRACKETS.]

DECIMALS
 .X ± [mm]
 .XX ± [mm]
 .XXX ± [mm]
 ANGLES
 .X ± -°

DRAWN	A. BUI	DATE	06FEB09
CHECKED	-	DATE	-
APPROVED	-	DATE	-
APPROVED	M. PIOZET	DATE	06FEB09
CAD NAME	TSR-1		
THIRD ANGLE PROJECTION			



Raychem Adapters
 300 Constitution Drive
 Menlo Park, CA 94025 U.S.A.

TITLE			
TM TINEL-LOCK SPLICE			
SIZE	CODE IDENT. NO.	DWG. NO.	REV
A	06090	TSR 1	A
DO NOT SCALE THIS DWG		SHEET 1 OF 1	