

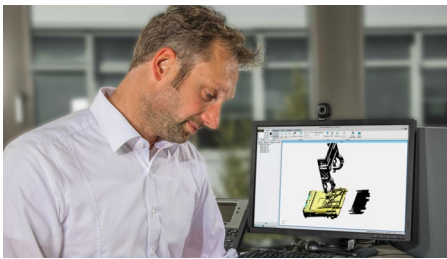


# HDSCS CONNECTOR SERIES

Terminals and Connectors



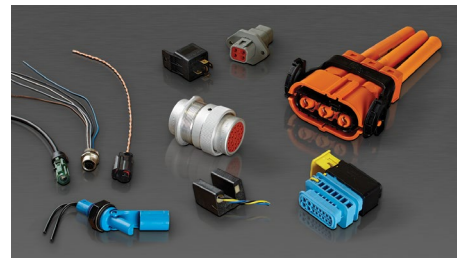
TE Connectivity (TE) Industrial & Commercial Transportation is a reliable provider of solutions for even the harshest environment. With a focus on employee expertise and durable products, we deliver the solutions and support our customers can count on.



**2,000+  
Employees**



**10,000+  
Customers**



**20,000+  
Different Parts**

Years ago, tractors, construction equipment, trucks, and boats had simple electrical systems that might have included electrical starting and a basic lighting package. Today, ECUs, joysticks, fuel-efficient engines, LED lights, and CAN systems are standard equipment. The need to protect sensitive electrical systems from vibration, moisture, dust, dirt, salt, and airborne particles has never been greater. TE Industrial & Commercial Transportation is a leader in supporting today's increasingly complex and sophisticated equipment and applications.

Our comprehensive line of products includes an unparalleled portfolio of rugged sensors, terminals, connectors, relays, and hybrid electric mobility solutions. These solutions are designed to withstand the harshest environmental conditions and to help vehicles operate safer, cleaner, and smarter.

Our solutions adapt to virtually any **harsh environment application**, including:



Motors and Gearboxes



ABS/EBS Brake Units



Telematics Units



Sensors



Wire-To-Wire Coupling at the Chassis



Infotainment Applications

## MARKETS WE SERVE



ON-HIGHWAY



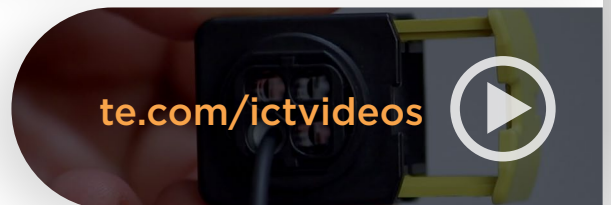
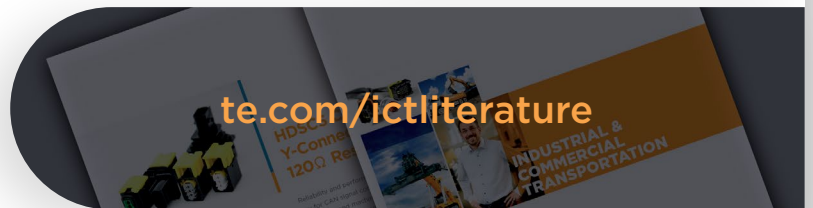
OFF-HIGHWAY



RECREATIONAL  
TRANSPORTATION

## ONLINE RESOURCES

To learn more about TE Connectivity Industrial & Commercial Transportation, its products, and their corresponding documents and videos, please check out the following pages on TE.com:



## PRODUCT INFORMATION CENTER (PIC)

You can rely on TE Connectivity's PIC team to provide support for answers to your general information or technical questions in an efficient and effective manner.

Connect with our PIC staff at:

[te.com/support](https://te.com/support)





## HDSCS CONNECTOR SERIES

Our HDSCS sealed connectors are designed to meet the rigorous demands of the commercial vehicle industry and off-road applications that require the highest standards of performance. Made from a rugged UL94 V-0-rated thermoplastic, HDSCS connectors have an integrated secondary lock with a poka-yoke feature that can be used for inline or flange-mounted applications in a wire-to-wire or wire-to-device configuration. Rated to IP67 and IP6K9K (when used with a backshell), HDSCS connectors are available in 5 housing sizes with 4 keying options. They are offered in arrangements ranging from 2 to 18 positions. Solutions for CAN bus architecture are also available. Accessories include backshells, protection caps, cavity plugs, and fixing slides.





Product Benefits.....	6
Product Applications.....	6
Product Documentation.....	7
Performance Specifications.....	7
Material Specifications.....	7
Housings.....	8-15
Accessories.....	16-19
Contacts .....	20-25
Tooling.....	26-28
How To Instructions .....	29
Index .....	30-31

# HDSCS CONNECTOR SERIES

## BENEFITS

- Optimize applied costs with AMP MCP 1.5K, 2.8, and 6.3/4.8K contacts. The shared family supports a broad range of heavy-duty applications with high current capacity.
- Protect from dust, water, and overspray with up to IP6K9K rugged sealing capabilities.
- Easily insert and extract contacts and enjoy trouble-free maintenance with individual wire seals designed to crimp at the base of the terminal.
- Quickly verify terminal position with the integrated secondary locking device and poka-yoke system, using a reliable assembly process.

## KEY INDUSTRIES

HDSCS products can be utilized in the truck, bus, construction, agriculture, and special vehicles industries.



Truck



Bus



Construction



Agriculture



Special

## APPLICATIONS

HDSCS products can be utilized in the following applications:



Motors and Gearboxes



ABS/EBS Brake Units



Hydraulic Pumps



Fuel Level Sensors



Wire-To-Wire Coupling At The Chassis



Actuators



Switches

## PRODUCT DOCUMENTATION

Additional product documentation is available for assistance with HDSCS products. The following documentation may be helpful:

[108-94020 \(Product Specification, HDSCS Connectors\)](#)

[114-18756 \(Application Specification, HDSCS Connectors\)](#)

[1563709 \(Product Group Drawing\)](#)



### PERFORMANCE SPECIFICATIONS

<b>Current:</b>	Up to 40 A
<b>Temperature:</b>	Operating at temperatures -40 °C to +140 °C
<b>Mating Durability:</b>	Contacts: up to 10 cycles (tin), up to 50 cycles (silver), up to 100 cycles (gold); see individual product specifications for additional details.
<b>Insulation Resistance:</b>	500 V dc, test per ISO 16750-2 (4.12)
<b>Immersion:</b>	IP67 rating, IP6K9K (with cover), for flanged tab housings, only by observing mounting instructions.
<b>Random Vibration:</b>	Tested at 177 m/s <sup>2</sup> , 94 hours per axis. See product spec 108- 94020 for full specifications.
<b>Voltage:</b>	Up to 60 V dc
<b>Flammability:</b>	UL 94-V0-rated material

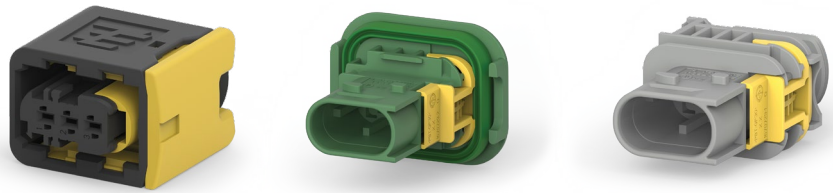
### MATERIAL SPECIFICATIONS

<b>Flange Seal:</b>	Silicone rubber
<b>Seal for Secondary Locking:</b>	Silicone rubber
<b>Housing:</b>	Glass-filled PBT
<b>Secondary Lock:</b>	Glass-filled PBT
<b>Slide Lock:</b>	Glass-filled PBT



# HDSCS HOUSINGS (Group A)

## GROUP A HOUSINGS



## GROUP A SIZE CONFIGURATIONS



**2 Positions**  
2 size 2.8

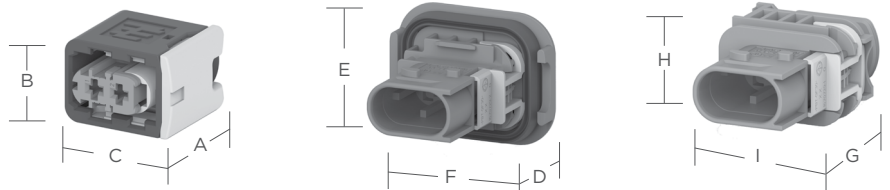


**2 Positions**  
2 size 1.5K



**3 Positions**  
3 size 1.5K

## DIMENSIONS



Receptacle Housing			Flanged Tab Housing			Flangeless Tab Housing		
Overall Length A	Overall Height B	Overall Width C	Overall Length D	Overall Height E	Overall Width F	Overall Length G	Overall Height H	Overall Width I
30.75-31.25 mm (1.211-1.231")	18.5 mm (0.728")	26.0 mm (1.02")	47.05-48.1 mm (1.852-1.89")	29.8 mm (1.17")	37.5 mm (1.48")	47.05-48.1 mm (1.852-1.89")	19.0 mm (0.748")	27.6 mm (1.09")

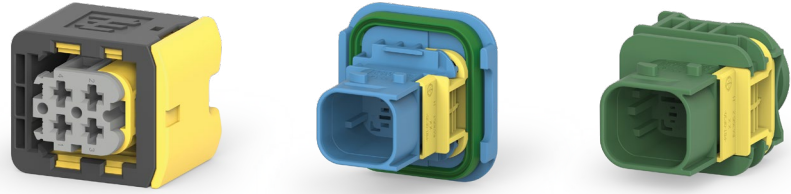
## ORDERING INFORMATION

Positions	Contacts	Keying Color	Receptacle Housing	Tab Housing	
				With Flange	Without Flange
2	(2x) 2.8	Black	1-1418483-1	1-1703841-1	1-1703839-1
		Gray	2-1418483-1	2-1703841-1	2-1703839-1
		Green	3-1418483-1	3-1703841-1	3-1703839-1
		Blue	4-1418483-1	4-1703841-1	4-1703839-1
(3) 2	(2x) 1.5K (1x) blank	Black	1-1418448-2	*	*
		Gray	2-1418448-2	*	*
		Green	3-1418448-2	*	*
		Blue	4-1418448-2	*	*
3	(3x) 1.5K	Black	1-1418448-1	1-1703843-1	1-1670730-1
		Gray	2-1418448-1	2-1703843-1	2-1670730-1
		Green	3-1418448-1	3-1703843-1	3-1670730-1
		Blue	4-1418448-1	4-1703843-1	4-1670730-1

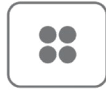
\*Other configurations available upon request. Please contact TE for additional information.

# HDSCS HOUSINGS (Group B)

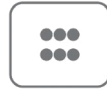
## GROUP B HOUSINGS



## GROUP B SIZE CONFIGURATIONS

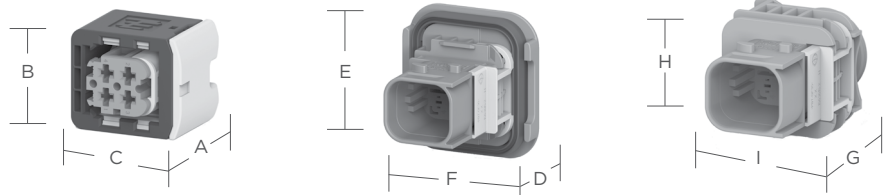


**4 Positions**  
4 size 2.8



**6 Positions**  
6 size 1.5K

## DIMENSIONS



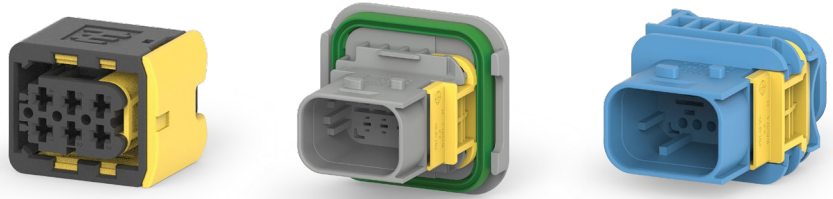
Receptacle Housing			Flanged Tab Housing			Flangeless Tab Housing		
Overall Length A	Overall Height B	Overall Width C	Overall Length D	Overall Height E	Overall Width F	Overall Length G	Overall Height H	Overall Width I
31.3 mm (1.23")	25.7 mm (1.01")	30.2 mm (1.19")	47.05-48.1 mm (1.852-1.89")	39.8 mm (1.57")	37.5 mm (1.48")	47.05-48.1 mm (1.852-1.89")	27.0 mm (1.06")	27.6 mm (1.09")

## ORDERING INFORMATION

Positions	Contacts	Keying Color	Receptacle Housing	Tab Housing	
				With Flange	Without Flange
4	(4x) 2.8	Black	1-1418390-1	1-1703808-1	1-1703818-1
		Gray	2-1418390-1	2-1703808-1	2-1703818-1
		Green	3-1418390-1	3-1703808-1	3-1703818-1
		Blue	4-1418390-1	4-1703808-1	4-1703818-1
6	(6x) 1.5K	Black	1-1418469-1	1-1703820-1	1-1703773-1
		Gray	2-1418469-1	2-1703820-1	2-1703773-1
		Green	3-1418469-1	3-1703820-1	3-1703773-1
		Blue	4-1418469-1	4-1703820-1	4-1703773-1

# HDSCS HOUSINGS (Group C)

## GROUP C HOUSINGS



## GROUP C SIZE CONFIGURATIONS



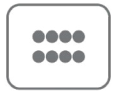
**2 Positions**  
2 size 6.3/4.8K



**6 Positions**  
6 size 2.8

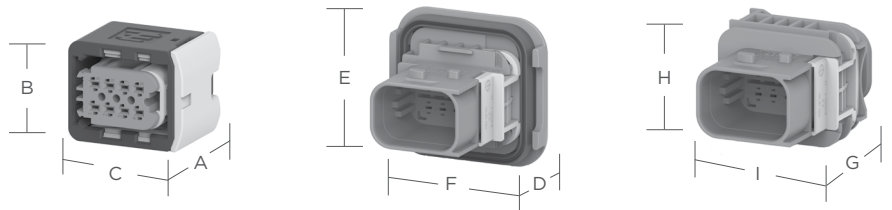


**7 Positions**  
4 size 1.5K  
3 size 2.8



**8 Positions**  
8 size 1.5K

## DIMENSIONS



Receptacle Housing			Flanged Tab Housing			Flangeless Tab Housing		
Overall Length A	Overall Height B	Overall Width C	Overall Length D	Overall Height E	Overall Width F	Overall Length G	Overall Height H	Overall Width I
31.3 mm (1.23")	25.7 mm (1.01")	31.2 mm (1.23")	47.05-50.6 mm (1.852-1.99")	39.8 mm (1.57")	42.5 mm (1.67")	47.05-50.6 mm (1.852-1.99")	27.0 mm (1.06")	32.6 mm (1.28")

## ORDERING INFORMATION

Positions	Contacts	Keying Color	Receptacle Housing	Tab Housing	
				With Flange	Without Flange
2	(2x) 6.3/4.8K	Black	1-1564542-1	1-1564546-1	1-1564544-1
		Gray	2-1564542-1	2-1564546-1	2-1564544-1
		Green	3-1564542-1	3-1564546-1	3-1564544-1
		Blue	4-1564542-1	4-1564546-1	4-1564544-1
6	(6x) 2.8	Black	1-1418437-1	*	*
		Gray	2-1418437-1	*	*
		Green	3-1418437-1	*	*
		Blue	4-1418437-1	*	*
7	(4x) 1.5K (3x) 2.8	Black	1-1418480-1	1-1670214-1	1-1703648-1
		Gray	2-1418480-1	2-1670214-1	2-1703648-1
		Green	3-1418480-1	3-1670214-1	3-1703648-1
		Blue	4-1418480-1	4-1670214-1	4-1703648-1
8	(8x) 1.5K	Black	1-1418479-1	1-1564416-1	1-1564512-1
		Gray	2-1418479-1	2-1564416-1	2-1564512-1
		Green	3-1418479-1	3-1564416-1	3-1564512-1
		Blue	4-1418479-1	4-1564416-1	4-1564512-1

\*Other configurations available upon request. Please contact TE for additional information.



# HDSCS HOUSINGS (Group D)

## GROUP D HOUSINGS



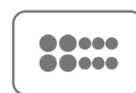
## GROUP D SIZE CONFIGURATIONS



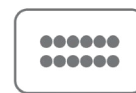
**4 Positions**  
2 size 1.5K  
2 size 6.3/4.8K



**8 Positions**  
8 size 2.8

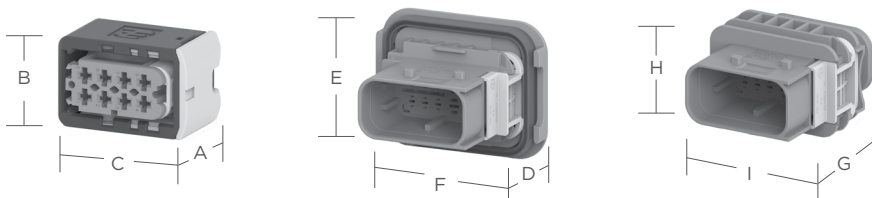


**10 Positions**  
6 size 1.5K  
4 size 2.8



**12 Positions**  
12 size 1.5K

## DIMENSIONS



Receptacle Housing			Flanged Tab Housing			Flangeless Tab Housing		
Overall Length A	Overall Height B	Overall Width C	Overall Length D	Overall Height E	Overall Width F	Overall Length G	Overall Height H	Overall Width I
31.3 mm (1.23")	25.7 mm (1.01")	39.2 mm (1.54")	47.05-48.1 mm (1.852-1.89")	39.8 mm (1.57")	50.5 mm (1.99")	47.05-48.1 mm (1.852-1.89")	27.0 mm (1.06")	40.6 mm (1.60")

## ORDERING INFORMATION

Positions	Contacts	Keying Color	Receptacle Housing	Tab Housing	
				With Flange	Without Flange
4	(2x) 1.5K (2x) 6.3/4.8K	Black	*	*	*
		Gray	2-2208157-1	*	*
		Green	3-2208157-1	*	*
		Blue	4-2208157-1	*	*
8	(8x) 2.8	Black	1-1670894-1	*	1-1564522-1
		Gray	2-1670894-1	*	2-1564522-1
		Green	3-1670894-1	*	3-1564522-1
		Blue	4-1670894-1	*	4-1564522-1
10	(6x) 1.5K (4x) 2.8	Black	1-1564514-1	1-1564518-1	1-1564516-1
		Gray	2-1564514-1	2-1564518-1	2-1564516-1
		Green	3-1564514-1	3-1564518-1	3-1564516-1
		Blue	4-1564514-1	4-1564518-1	4-1564516-1
12	(12x) 1.5K	Black	1-1703639-1	1-1564520-1	1-1564414-1
		Gray	2-1703639-1	2-1564520-1	2-1564414-1
		Green	3-1703639-1	3-1564520-1	3-1564414-1
		Blue	4-1703639-1	4-1564520-1	4-1564414-1

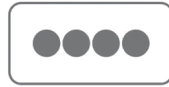
\*Other configurations available upon request. Please contact TE for additional information.

# HDSCS HOUSINGS (Group E)

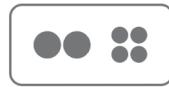
## GROUP E HOUSINGS



## GROUP E SIZE CONFIGURATIONS



**4 Positions**  
4 size 6.3/4.8K



**6 Positions**  
4 size 2.8  
2 size 6.3/4.8K

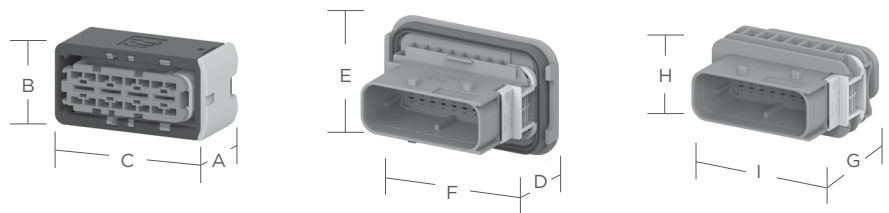


**8 Positions**  
6 size 2.8  
2 size 6.3/4.8K



**12 Positions**  
12 size 2.8

## DIMENSIONS



Receptacle Housing			Flanged Tab Housing			Flangeless Tab Housing		
Overall Length A	Overall Height B	Overall Width C	Overall Length D	Overall Height E	Overall Width F	Overall Length G	Overall Height H	Overall Width I
31.3 mm (1.23")	25.7 mm (1.01")	51.2 mm (2.02")	50.6 mm (1.99")	39.8 mm (1.57")	62.5 mm (1.46")	47.1 mm (1.85")	27.0 mm (1.06")	52.6 mm (2.07")

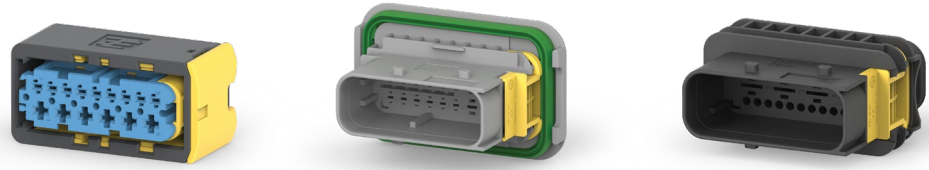
## ORDERING INFORMATION

Positions	Contacts	Keying Color	Receptacle Housing	Tab Housing	
				With Flange	Without Flange
4	(4x) 6.3/4.8K	Black	1-1564330-1	1-1564536-1	1-1564534-1
		Gray	2-1564330-1	2-1564536-1	2-1564534-1
		Green	3-1564330-1	*	3-1564534-1
		Blue	4-1564330-1	*	4-1564534-1
(8) 6	(4x) 2.8 (2x) 6.3/4.8K (2x) blank	Black	1-2299782-2	*	*
		Gray	2-2299782-2	*	*
		Green	3-2299782-2	*	*
		Blue	4-2299782-2	*	*
8	(6x) 2.8 (2x) 6.3/4.8K	Black	1-2299782-1	*	*
		Gray	2-2299782-1	*	*
		Green	3-2299782-1	*	*
		Blue	4-2299782-1	*	*
12	(12x) 2.8	Black	1-1670901-1	*	*
		Gray	2-1670901-1	*	*
		Green	3-1670901-1	*	*
		Blue	4-1670901-1	*	*

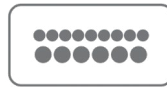
\*Other configurations available upon request. Please contact TE for additional information.

# HDSCS HOUSINGS (Group E)

## GROUP E HOUSINGS



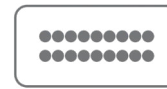
## GROUP E SIZE CONFIGURATIONS



**15 Positions**  
9 size 1.5K  
6 size 2.8

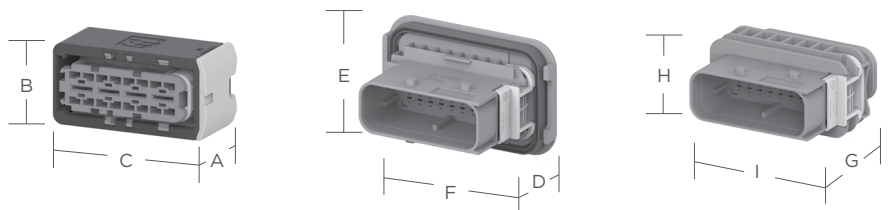


**16 Positions**  
12 size 1.5K  
4 size 2.8



**18 Positions**  
18 size 1.5K

## DIMENSIONS



Receptacle Housing			Flanged Tab Housing			Flangeless Tab Housing		
Overall Length A	Overall Height B	Overall Width C	Overall Length D	Overall Height E	Overall Width F	Overall Length G	Overall Height H	Overall Width I
31.3 mm (1.23")	25.7 mm (1.01")	51.2 mm (2.02")	47.1-48.1 mm (1.85-1.89")	39.8 mm (1.57")	62.5 mm (1.46")	47.1-48.1 mm (1.85-1.89")	27.0 mm (1.06")	52.6 mm (2.07")

## ORDERING INFORMATION

Positions	Contacts	Keying Color	Receptacle Housing	Tab Housing	
				With Flange	Without Flange
15	(9x) 1.5K (6x) 2.8	Black	1-1563878-1	1-1564532-1	1-1564530-1
		Gray	2-1563878-1	2-1564532-1	2-1564530-1
		Green	3-1563878-1	3-1564532-1	3-1564530-1
		Blue	4-1563878-1	4-1564532-1	4-1564530-1
16	(12x) 1.5K (4x) 2.8	Black	1-1564337-1	1-1564407-1	1-1564528-1
		Gray	2-1564337-1	2-1564407-1	2-1564528-1
		Green	3-1564337-1	3-1564407-1	3-1564528-1
		Blue	4-1564337-1	4-1564407-1	4-1564528-1
18	(18x) 1.5K	Black	1-1563759-1	1-1564526-1	1-1564412-1
		Gray	2-1563759-1	2-1564526-1	2-1564412-1
		Green	3-1563759-1	3-1564526-1	3-1564412-1
		Blue	4-1563759-1	4-1564526-1	4-1564412-1

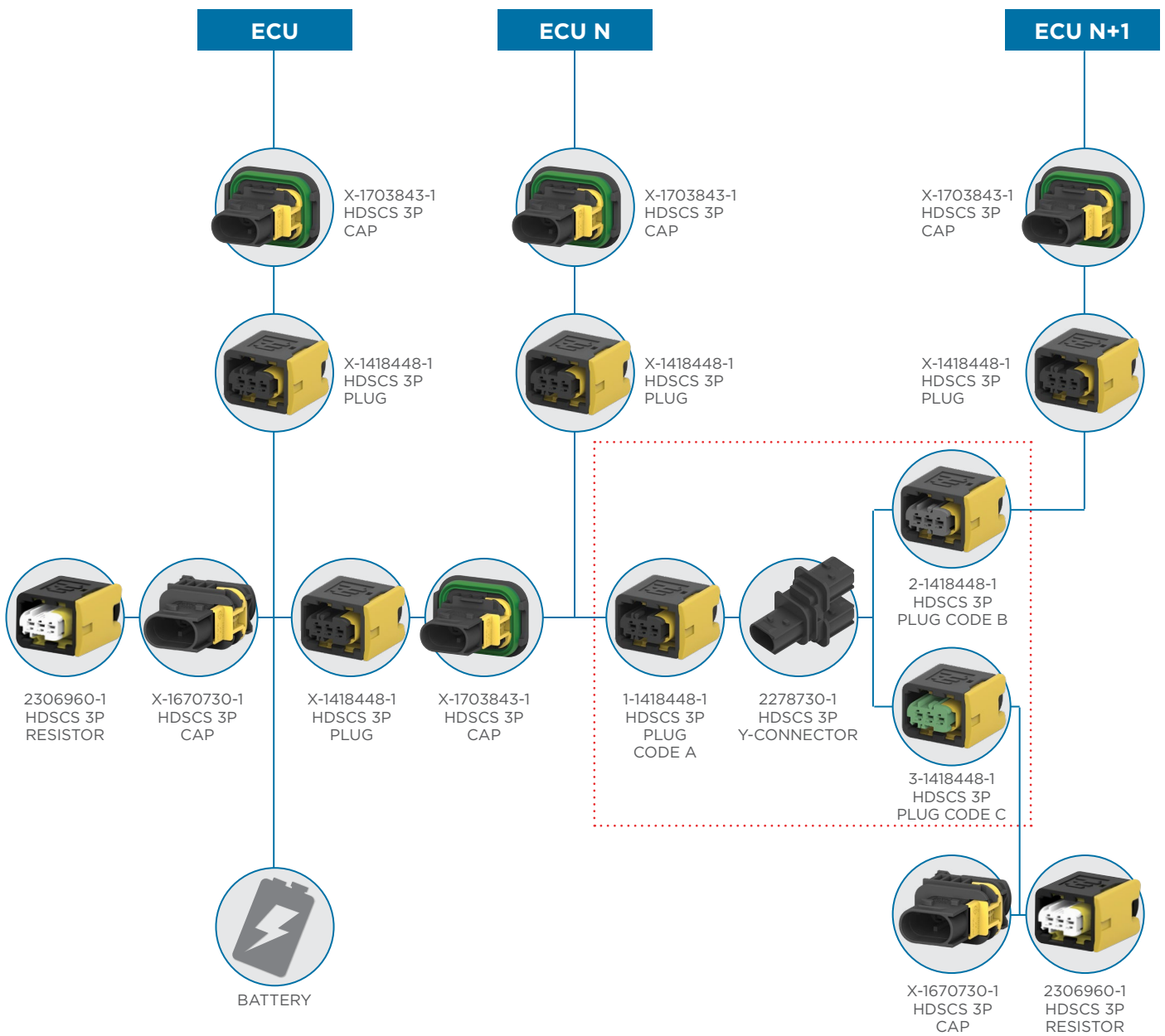


# HDSCS HOUSINGS

## CAN BUS HOUSINGS

HDSCS CAN bus Y-Connector and 120(ohm) Resistor connectors are key for CAN signal communication systems in vehicles or machinery on the farm, construction sites, and on-/off-road applications. They meet CAN bus protocol specifications according to SAE J1939 standard and are fully compatible with our HDSCS accessories and parts, including the HDSCS 3-position plug and backshell/dust cap.

## SAE J 1939 CAN-BUS NETWORK ARCHITECTURE:



# HDSCS HOUSINGS (CAN BUS)

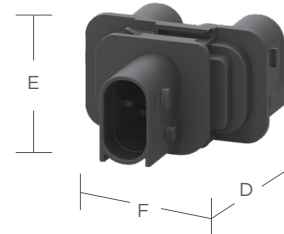
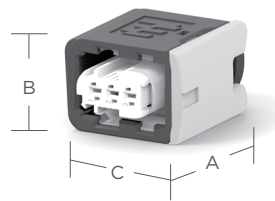
## CAN BUS HOUSINGS



## CAN BUS SIZE CONFIGURATIONS



**3 Positions**  
3 size 1.5K



## DIMENSIONS

120Ω Resistor Receptacle Housing			Y-Connector Tab Housing		
Overall Length A	Overall Height B	Overall Width C	Overall Length D	Overall Height E	Overall Width F
30.75 mm (1.211")	18.5 mm (0.728")	26.0 mm (1.02")	53.1 mm (2.09")	25.9 mm (1.02")	42.4 mm (1.67")

## ORDERING INFORMATION

Positions	Contacts	Keying Type	Color	Part Number
3	(2x) 1.5K (1x) 120Ω Resistor	X	White	2306960-1
3 / 3 / 3	(3x) 1.5K (3x) 1.5K (3x) 1.5K	A / B / C	Black	2278730-1
		A / A / A		2278730-2

## HDSCS ACCESSORIES

Several accessory items are available to complement the HDSCS connectors, including backshells, fixing slides, and protection caps. Accessory items cover a wide array of design requirements such as assisting with mounting, providing additional protection, and offering enhanced aesthetics.

### BACKSHELLS

Backshells attach to the back of a connector to provide additional protection against environmental conditions as well as provide additional strain relief to the wire bundle.

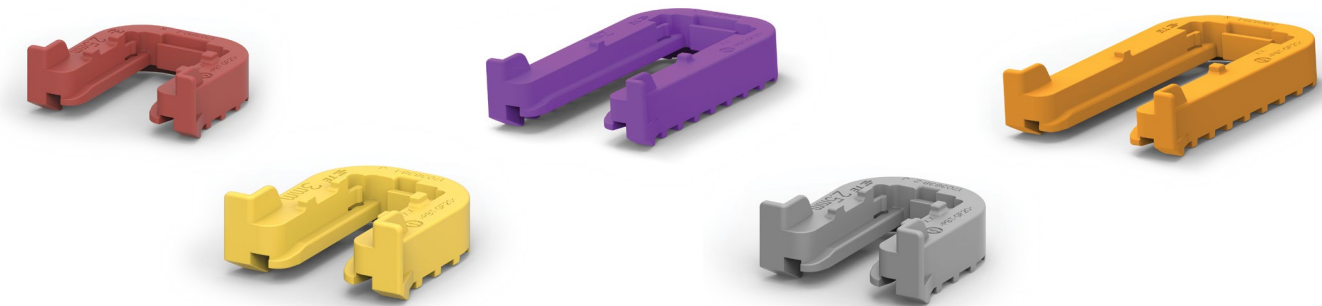


Group	Description	Part Number
A	Vertical adapter for NW 8.5 mm corrugated tubing	1670365-1
	Right-angle adapter for NW 8.5 mm corrugated tubing	1670150-1
B	Right-angle adapter with universal clamp	965576-1
	Vertical adapter with universal clamp	965784-1
	Right-angle adapter for NW 7.5 mm corrugated tubing	185793-1
	Right-angle adapter for NW 8.5 mm corrugated tubing	965577-1
	Right-angle adapter for NW 10 mm corrugated tubing	965783-1
	Vertical adapter for NW 7.5 mm corrugated tubing	185792-1
	Vertical adapter for NW 8.5 mm corrugated tubing	965785-1
	Vertical adapter for NW 10 mm corrugated tubing	965786-1
	Right-angle adapter 4/7 position for hose	1534789-1
	Vertical adapter 4/7 position for hose	1534791-1
	Vertical adapter 4/7 position for jacketed cable 5.2-6.5 mm	1418916-1
	Vertical adapter 4/7 position for jacketed cable 6.0-9.5 mm	1418917-1
	Right-angle adapter 4/7 position for jacketed cable 5.2-6.5 mm	1418918-1
	Right-angle adapter 4/7 position for jacketed cable 6.0-9.5 mm	1418919-1
C	Vertical adapter for NW 13 mm corrugated tubing	1670364-1
	Right-angle adapter for NW 13 mm corrugated tubing	1670057-1
D	Vertical adapter for NW 13 mm corrugated tubing	1563111-1
	Right-angle adapter for NW 13 mm corrugated tubing	1563110-1
E	Vertical adapter for NW 17 mm corrugated tubing and hose	1670866-1
	Right-angle adapter for NW 17 mm corrugated tubing and hose	1670865-1

# HDSCS ACCESSORIES

## FIXING SLIDES

Fixing slides are used to help secure HDSCS connectors while mounting them. The locking slides can accommodate panel thicknesses from 1.0-3.5mm



Group	Color	Panel Thickness	Part Number
A	Red	2.50	1703838-2
	Yellow	3.00	1703838-1
	Gray	3.50	1703838-6
B	Red	2.50	1703810-2
	Yellow	3.00	1703810-1
	Gray	3.50	1703810-6
C	Gray	1.50	1670720-5
	Red	2.50	1670720-2
	Yellow	3.00	1670720-1
	Gray	3.50	1670720-6
D	Natural	1.00	1564562-4
	Orange	1.20	2317070-1
	Gray	1.50	1564562-5
	Red	2.50	1564562-2
	Yellow	3.00	1564562-1
	Gray	3.50	1564562-6
E	Orange	1.20	2316939-1
	Gray	1.50	1564411-5
	Violet	2.00	1564411-7
	Red	2.50	1564411-2
	Yellow	3.00	1564411-1
	Gray	3.50	1564411-6

Other configurations available upon request. Please contact TE for additional information.



## HDSCS ACCESSORIES

### PROTECTION CAPS

HDSCS protection caps provide an environmental seal and are used to protect the connector interface when the two halves are not mated.



Group	Housing	Part Number
A	Receptacle	2112299-1
	Tab	2112289-1
B	Receptacle	2112300-1
	Tab	2112291-1
C	Receptacle	2112301-1
	Tab	2112293-1
D	Receptacle	2112302-1
	Tab	2112295-1
E	Receptacle	2112303-1
	Tab	2112297-1

# HDSCS CONTACTS

HDSCS connectors utilize the common AMP MCP stamped & formed contact system.



## AMP MCP CONTACT PERFORMANCE SPECIFICATIONS

### Durability

10 cycles (tin)
50 cycles (silver)
100 cycles (gold)

### Current Rating

Contact Size	Max Current
1.5K	Up to 20 A
2.8	Up to 40 A
6.3/4.8K	Up to 40 A

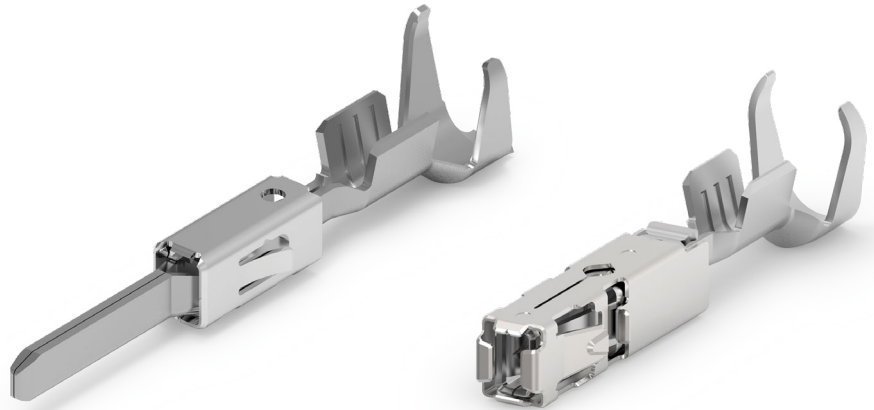
### Contact Retention

Contact Size	Min. Load
1.5K	40/60 N
2.8	80 N
6.3/4.8K	80 N

### Crimp Tensile Strength

Contact Size	Tensile Strength
<b>1.5K</b>	
.22mm <sup>2</sup>	≥ 32 N
.35mm <sup>2</sup>	≥ 50 N
.50mm <sup>2</sup>	≥ 60 N
.75mm <sup>2</sup>	≥ 85 N
1.0mm <sup>2</sup>	≥ 108 N
1.25mm <sup>2</sup>	≥ 135 N (16 AWG)
1.5mm <sup>2</sup>	≥ 135 N
<b>2.8</b>	
.22mm <sup>2</sup>	≥ 28 N
.35mm <sup>2</sup>	≥ 50 N
.50mm <sup>2</sup>	≥ 60 N
.75mm <sup>2</sup>	≥ 85 N
1.0mm <sup>2</sup>	≥ 108 N
1.5mm <sup>2</sup>	≥ 150 N
2.5mm <sup>2</sup>	≥ 200 N
<b>6.3/4.8K</b>	
.35mm <sup>2</sup>	≥ 50 N
.50mm <sup>2</sup>	≥ 60 N
.75mm <sup>2</sup>	≥ 85 N
1.0mm <sup>2</sup>	≥ 108 N
1.5mm <sup>2</sup>	≥ 150 N
2.5mm <sup>2</sup>	≥ 200 N
4.0mm <sup>2</sup>	≥ 310 N
6.0mm <sup>2</sup>	≥ 450 N

# HDSCS CONTACTS



## AMP MCP 1.5K CONTACTS

Stamped & Formed Tabs and Receptacles with Single Wire Sealing System

1.5K	Wire Size (mm <sup>2</sup> )	Insulation Diameter FLR (mm)	Strip Form Part Number	Loose Piece Part Number	Finish Code
Receptacle Contacts	0.2-0.35	1.1-1.4	1564324	1564325	-1; -2; -3
	0.5-1.0	1.4-2.1	1241380*	1241381	-1; -2; -3; 1-x-2*
	>1.0-1.5	1.9-2.4	1418884	1418885	-1; -3
Tab Contacts	0.2-0.5	1.15-1.6	969028	969029	-2; -3; -5
			963902	963903	-1; -2; -3
	0.35		2141884*	2141885	-2; -3; -5; 2-x-2*
	0.5-1.0		963904	963905	-1; -2; -3
			964269*	964270	-2; -3; -5; 2-x-2*
	1.5		1.95-2.4	1703278	1703279

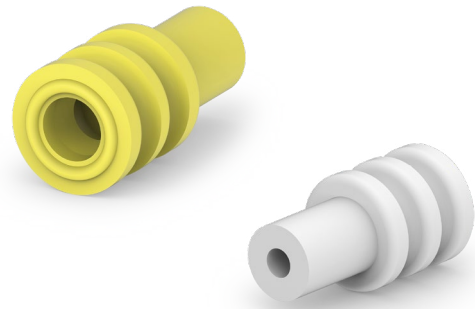
Material and Finish Codes with "\*" are only available on their corresponding strip form or loose piece part number.

### MCP 1.5K Terminal Material and Finish Codes

	Finish Code	-1	-2	-3	-5	1-x-2	2-x-2
Receptacle Contacts	Material	CuNiSi	CuNiSi	CuNiSi	*	CuNiSi	*
	Plating	Pre-Tin	Select Gold	Select Silver	*	1.27um Select Gold	*
Tab Contacts	Finish Code	-2	-3	-5	1-x-1	1-x-2	1-x-3
	Material	CuSn4	CuFe2	CuSn4	CuSn4	CuFe2	CuFe2
	Plating	Pre-Tin	Pre-Tin	Select Gold	Select Silver	Select Silver	Select Silver

\*Other configurations available upon request. Please contact TE for additional information.

# HDSCS WIRE SEALS & SEALING PLUGS



## AMP MCP 1.5K WIRE SEALS

Wire Seals are required for connectors without an integrated rear seal to maintain an environmental seal.

Insulation Diameter (mm)	Cavity Size (mm)	Color	Part Number
0.9-1.2	3.6	Green	1718705-1
		Red	1718705-2
Red		964971-1	
Blue		1394133-1	
1.2-1.6		Green	963530-1
1.4-1.9		Yellow	964972-1
1.9-2.4		Orange	2112323-1 <sup>†</sup>
2.2-2.4		Green	2287497-1 <sup>†</sup>

<sup>†</sup>For cable with insulation diameter between 2.2 - 2.4mm, wire seal 2287497-1 is preferred, with improved insertion performance into housing. Reduced 120°C temperature limit. 2112323-1 has 140°C temperature limit but increased insertion forces into housing.

## AMP MCP 1.5K SEALING PLUGS

Open cavities provide pathways for contaminants to enter the connectors. To maintain seal integrity, any unused cavity must be filled with the appropriate size sealing plug.

Cavity Size (mm)	Color	Part Number
3.6	White	963531-1
	Natural	1394132-1

# HDSCS CONTACTS



## AMP MCP 2.8 CONTACTS

Stamped & Formed Tabs and Receptacles with Single Wire Sealing System

2.8	Wire Size (mm <sup>2</sup> )	Insulation Diameter FLR (mm)	Strip Form Part Number	Loose Piece Part Number	Material/Finish Codes
Receptacle Contacts	0.2-0.5	1.2-1.4	2141859	-	1-x-1; 1-x-2; 1-x-3
	0.5-1.0	1.4-2.1	968855	968875	1-x-1; 1-x-2; 1-x-3
	1.5-2.5	2.2-3.0	968857*	968876	1-x-1; 1-x-2*; 1-x-3; 2-x-3
	4.0	3.4-3.7	968859	968877	1-x-1; 1-x-3; 2-x-3
	12 AWG	3.0-3.8	1719506	-	1-x-1; 1-x-3
Tab Contacts	0.2-0.5	MAX 2.1	965982	965983	1-x-1; 1-x-3
	0.5-1.0	MAX 2.1	962915*	963748	1-x-1; 1-x-2; 1-x-3; 2-x-1; 2-x-2; 2-x-3; 6-x-6*
	>1.0-2.5	MAX 3.0	962916	963749	1-x-1; 1-x-2; 1-x-3; 2-x-1; 2-x-2; 2-x-3
	>2.5-4.0	MAX 3.7	968947	968966	1-x-1; 1-x-2; 2-x-1; 2-x-2; 3-x-1
	12 AWG	MAX 3.0	1719504	1719503	1-x-1; 1-x-2

Material and Finish Codes with "\*" are only available on their corresponding strip form or loose piece part number.

### MCP 2.8 Terminal Material and Finish Codes

	Finish Code	1-x-1	1-x-2	1-x-3	2-x-1	2-x-2	2-x-3	3-x-1	6-x-6
Receptacle Contacts	Material	CuNiSi	CuNiSi	CuNiSi	*	*	CuNiSi	*	*
	Plating	Pre-Tin	Select Gold	Select Silver	*	*	Select Silver	*	*
Tab Contacts	Material	CuSn4	CuSn4	CuSn4	CuFe	CuFe	CuFe	CuSn 0.20	CuSn4
	Plating	Pre-Tin	Select Silver	Select Gold	Pre-Tin	Select Silver	Select Gold	Pre-Tin	Select Gold

\*Other configurations available upon request. Please contact TE for additional information.



## HDSCS WIRE SEALS & SEALING PLUGS



### AMP MCP 2.8 WIRE SEALS

Wire Seals are required for connectors without an integrated rear seal to maintain an environmental seal.

Insulation Diameter (mm)	Cavity Size (mm)	Color	Part Number
1.2-2.1	5.6	Light Blue	828904-1
			828904-2
			828904-3
2.2-3.0		White	828905-1

### AMP MCP 2.8 SEALING PLUGS

Open cavities provide pathways for contaminants to enter the connectors. To maintain seal integrity, any unused cavity must be filled with the appropriate size sealing plug.

Cavity Size (mm)	Color	Part Number
5.4	Natural	828922-1
	Green	828922-2

# HDSCS CONTACTS



## AMP MCP 6.3/4.8K CONTACTS

Stamped & Formed Tabs and Receptacles with Single Wire Sealing System

6.3/4.8K	Wire Size (mm <sup>2</sup> )	Insulation Diameter FLR (mm)	Strip Form Part Number	Loose Piece Part Number	Material/Finish Codes
Receptacle Contacts	0.35-0.5	1.2-2.3	1241410*	1241411	-1; -3*; 5-x-1*; 5-x-3*
	0.5-1.0	1.4-2.7	1241412	1241413	-1; -3
	>1.0-2.5	2.2-3.7	1241414	1241415	-1; -3
	>2.5-4.0	3.4-4.5	1241416	1241417	-1; -3
	4.0-6.0	3.4-4.3	1241418*	1241419	-4; 1-x-3; 2-x-3*
Tab Contacts	0.5-1.0	1.4-2.1	962917	963742	1-x-1; 1-x-2; 2-x-1
	>1.0-2.5	2.2-3.0	962918	963743	1-x-1; 1-x-2; 2-x-1; 2-x-2
	4.0	2.7-3.7	962919	963744	1-x-1; 1-x-2; 2-x-2
	6.0, 10 AWG	4.0-4.3	2112966	2112965	2-x-2

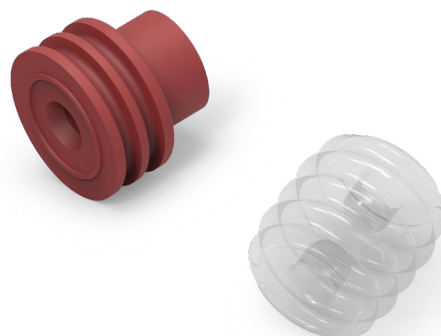
Material and Finish Codes with "\*" are only available on their corresponding strip form or loose piece part number.

## MCP 6.3/4.8K Terminal Material and Finish Codes

	Finish Code	-1	-3	-4	1-x-1	1-x-2	1-x-3	2-x-1	2-x-2	2-x-3	5-x-1	5-x-3
Receptacle Contacts	Material	CuNiSi			*	*	CuNiSi	*	*	CuNiSi		
	Plating	Pre-Tin	Select Silver	Pre-Tin	*	*	Select Silver	*	*	Select Silver	Pre-Tin	Select Silver
Tab Contacts	Material	*	*	*	CuSn4		*	CuFe2		*	*	*
	Plating	*	*	*	Pre-Tin	Select Silver	*	Pre-Tin	Select Silver	*	*	*

\*Other configurations available upon request. Please contact TE for additional information.

## HDSCS WIRE SEALS & SEALING PLUGS



### AMP MCP 6.3/4.8K WIRE SEALS

Wire Seals are required for connectors without an integrated rear seal to maintain an environmental seal.

Insulation Diameter (mm)	Cavity Size (mm)	Color	Part Number
1.4-2.0	8.5	Yellow	2177018-1
2.0-2.7		White	1394511-1
2.7-3.0		Red-Brown	1823111-1
3.4-3.7		Blue	1394512-1
4.0-4.5		Green	1719043-1

### AMP MCP 6.3/4.8K SEALING PLUGS

Open cavities provide pathways for contaminants to enter the connectors. To maintain seal integrity, any unused cavity must be filled with the appropriate size sealing plug.

Cavity Size (mm)	Color	Part Number
8.5	Transparent	967652-1

# HDSCS CONNECTORS

## TOOLING

Tools are specific to each contact style. To create a proper crimp and achieve the highest performance specifications, contacts must be crimped with the recommended tooling.



## HAND TOOL FOR AMP MCP CONTACTS

Contact Size	Contact Type	Strip Form Part Number	Loose Piece Part Number	Hand Tool Part Number	Die Set Part Number	
1.5K	Receptacle	1564324	1564325	539635-1	4-1579016-0	
		1241380	1241381		539950-2	
		1418884	1418885		5-1579001-3	
	Tab	969028	969029		539663-2	
		963902	963903		539651-2	
		2141884	2141885		539663-2	
		963904	963905		539651-2	
		964269	964270		539663-2	
		1703278	1703279	-	-	
2.8	Receptacle	2141859	-	-	-	
		968855	968875	539635-1	539726-2	
		968857	968876		539727-2	
		968859	968877		539727-2	
			1719506	-	-	-
	Tab	965982	965983	539635-1	539737-2	
		962915	963748		539758-2	
		962916	963749		539758-2	
968947		968966	539727-2			
		1719504	1719503	-	-	
6.3 / 4.8K	Receptacle	1241410	1241411	539635-1	539955-2	
		1241412	1241413		539955-2	
		1241414	1241415		539956-2	
		1241416	1241417		539956-2	
		1241418	1241419		3-1579021-7	
	Tab	962917	963742		539757-2	
		962918	963743		539757-2	
		962919	963744		539757-2	
		2112966	2112965	-	-	

Other tooling configurations available upon request. Please contact TE for additional information.

# HDSCS CONNECTORS

## AUTOMATED FOR AMP MCP CONTACTS



OCEAN 2.0 Applicator

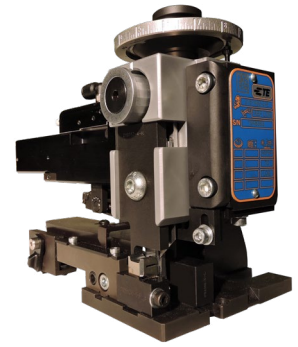
Contact Size	Contact Type	Strip Form Part Number	Feed	Type	Applicator Part Number
1.5K	Receptacle	1564324	Side	Mechanical	2151469-1
		1241380		Pneumatic	2151469-2
		1418884		Mechanical	2151064-1
				Pneumatic	2151064-2
				Mechanical	2151424-1
				Pneumatic	2151424-2
	Tab	969028		Mechanical	2151056-1
		963902		Pneumatic	2151056-2
		2141884		Mechanical	2151167-1
		963904		Pneumatic	2151167-2
		964269		Mechanical	2151056-1
		1703278		Pneumatic	2151056-2
				Mechanical	2151170-1
				Pneumatic	2151170-2
				Mechanical	2151057-1
				Pneumatic	2151057-2
2.8	Receptacle	2141859	Side	-	-
		968855		Mechanical	2151227-1
		968857		Pneumatic	2151227-2
		968859		Mechanical	2151346-1
		1719506		Pneumatic	2151346-2
				Mechanical	2151173-1
	Tab	965982		Pneumatic	2151173-2
		962915		Mechanical	2836789-1
		962916		Pneumatic	2836789-2
		968947		Mechanical	2151840-1
		1719504		Pneumatic	2151840-2
				Mechanical	2151181-1
				Pneumatic	2151181-2
				Mechanical	2151260-1
				Pneumatic	2151260-2
				Mechanical	2151173-1
	Pneumatic	2151173-2			
	Mechanical	2836092-1			
	Pneumatic	2836092-2			

Other tooling configurations available upon request. Please contact TE for additional information.



# HDSCS CONNECTORS

## AUTOMATED FOR AMP MCP CONTACTS (Continued)



OCEAN 2.0 Applicator

Contact Size	Contact Type	Strip Form Part Number	Feed	Type	Applicator Part Number
6.3 / 4.8K	Receptacle	1241410	Side	Pneumatic	2151695-2
		1241412		Pneumatic	2151234-2
		1241414		Pneumatic	2151177-2
		1241416		Pneumatic	2151151-2
		1241418		Mechanical	2151466-1
	Tab	962917		Pneumatic	2151466-2
		962918		Pneumatic	2266535-2
		962919		Pneumatic	2151783-2
		2112966		Pneumatic	2151782-2
				Pneumatic	2151841-2

Other tooling configurations available upon request. Please contact TE for additional information.

## EXTRACTION AND INSERTION TOOLS FOR AMP MCP CONTACTS

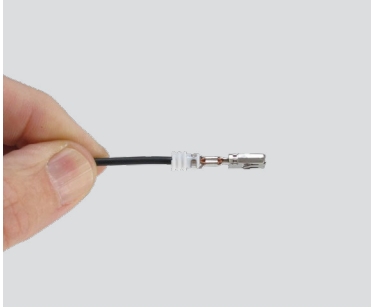
Contact Size	Contact Type	Tool Type	Part Number
1.5K	Receptacle	Insertion	5-1579018-6
		Extraction	1-1579007-1
	Tab	Extraction	539960-1
2.8	Receptacle	Insertion	519609-1
		Extraction	1579007-1
	Tab	Extraction	1-1579007-6
6.3 / 4.8K	Receptacle	Insertion	6-1579018-3
		Extraction	1-1579007-3
	Tab	Extraction	1-1579007-6



# HDSCS CONNECTORS

## HOW-TO INSTRUCTIONS

### CONTACT INSERTION



**STEP 1:**

Grasp crimped contact approximately one inch behind the contact barrel.



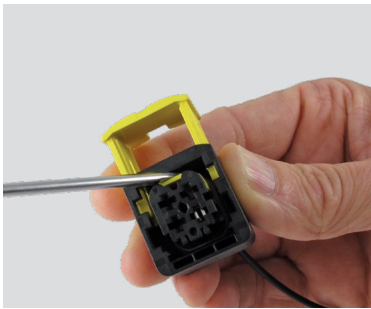
**STEP 2:**

Make sure the contact is in the correct orientation. Verify the integrated secondary lock is in the unlocked position.



**STEP 3:**

Push contact straight into connector grommet until a click is felt. A slight tug will confirm that it is properly locked in place.



**STEP 4:**

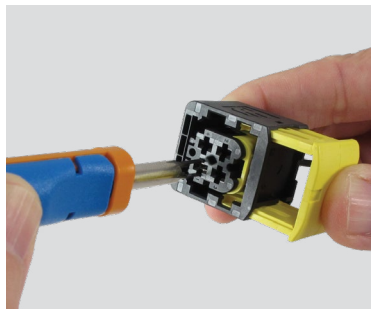
Push the integrated secondary lock into the locked position with a DT-RT1 or a screwdriver.

### CONTACT REMOVAL



**STEP 1:**

Using a DT-RT1 or a screwdriver, unlock the integrated secondary lock.



**STEP 2:**

Using the appropriate extraction tool, insert the blades into the contact cavity until they stop.



**STEP 3:**

Pull contact wire assembly out of connector.

INDEX

BACKSHELLS

185792.....16  
 185793.....16  
 965576 .....16  
 965577.....16  
 965783 .....16  
 965784 .....16  
 965785 .....16  
 965786 .....16  
 1418916.....16  
 1418917.....16  
 1418918.....16  
 1418919.....16  
 1534789.....16  
 1534791.....16  
 1563110.....16  
 1563111.....16  
 1670057.....16  
 1670150 .....16  
 1670364 .....16  
 1670365.....16  
 1670865.....16  
 1670866 .....16

CONTACTS

962915 .....22, 26, 27  
 962916 .....22, 26, 27  
 962917 .....24, 26, 28  
 962918 .....24, 26, 28  
 962919 .....24, 26, 28  
 963742.....24, 26  
 963743.....24, 26  
 963744 .....24, 26  
 963748.....22, 26  
 963749 .....22, 26  
 963902.....20, 26, 27  
 963903.....20, 26  
 963904.....20, 26, 27  
 963905.....20, 26  
 964269.....20, 26, 27  
 964270 .....20, 26  
 965982 .....22, 26, 27  
 965983 .....22, 26

968855 .....22, 26, 27  
 968857 .....22, 26, 27  
 968859 .....22, 26, 27  
 968875 .....22, 26  
 968876 .....22, 26  
 968877 .....22, 26  
 968947 .....22, 26, 27  
 968966.....22, 26  
 969028.....20, 26, 27  
 969029.....20, 26  
 1241380.....20, 26, 27  
 1241381.....20, 26  
 1241410.....24, 26, 28  
 1241411.....24, 26  
 1241412.....24, 26, 28  
 1241413.....24, 26  
 1241414.....24, 26, 28  
 1241415.....24, 26  
 1241416.....24, 26, 28  
 1241417 .....24, 26  
 1241418.....24, 26, 28  
 1241419.....24, 26  
 1418884.....20, 26, 27  
 1418885.....20, 26  
 1564324.....20, 26, 27  
 1564325.....20, 26  
 1703278.....20, 26, 27  
 1703279.....20, 26  
 1719503.....22, 26  
 1719504 .....22, 26, 27  
 1719506 .....22, 26, 27  
 2112965.....24, 26  
 2112966.....24, 26, 28  
 2141859.....22, 26, 27  
 2141884.....20, 26, 27  
 2141885.....20, 26

FIXING SLIDES

1564411.....17  
 1564562.....17  
 1670720.....17  
 1703810 .....17  
 1703838.....17  
 2316939.....17

2317070.....17

HOUSINGS

1418390 .....9  
 1418437.....10  
 1418448 .....8, 14  
 1418469 .....9  
 1418479.....10  
 1418480 .....10  
 1418483.....8  
 1563759.....13  
 1563878 .....13  
 1564330 .....12  
 1564337.....13  
 1564407 .....13  
 1564412.....13  
 1564414 .....11  
 1564416 .....10  
 1564512.....10  
 1564514.....11  
 1564516.....11  
 1564518.....11  
 1564520 .....11  
 1564522.....11  
 1564526.....13  
 1564528.....13  
 1564530 .....13  
 1564532.....13  
 1564534 .....12  
 1564536.....12  
 1564542.....10  
 1564544 .....10  
 1564546 .....10  
 1670214.....10  
 1670730.....8, 14  
 1670894 .....11  
 1670901 .....12  
 1703639.....11  
 1703648 .....10  
 1703773.....9  
 1703808 .....9  
 1703818.....9  
 1703820 .....9  
 1703839.....8

**INDEX**

1703841.....	8
1703843.....	8, 14
2208157.....	11
2278730.....	14, 15
2299782.....	12
2306960.....	14, 15

**PROTECTION CAPS**

2112289.....	18
2112291.....	18
2112293.....	18
2112295.....	18
2112297.....	18
2112299.....	18
2112300.....	18
2112301.....	18
2112302.....	18
2112303.....	18

**SEALING PLUGS**

828922.....	23
963531.....	21
967652.....	25
1394132.....	21

**TOOLING**

519609.....	28
539635.....	26
539651.....	26
539663.....	26
539726.....	26
539727.....	26
539737.....	26
539757.....	26
539758.....	26
539950.....	26
539955.....	26
539956.....	26
539960.....	28
1579001.....	26
1579007.....	28
1579016.....	26
1579018.....	28
1579021.....	26

2151056.....	27
2151057.....	27
2151064.....	27
2151151.....	28
2151167.....	27
2151170.....	27
2151173.....	27
2151177.....	28
2151181.....	27
2151227.....	27
2151234.....	28
2151260.....	27
2151346.....	27
2151424.....	27
2151466.....	28
2151469.....	27
2151695.....	28
2151701.....	27
2151782.....	28
2151783.....	28
2151840.....	27
2151841.....	28
2266535.....	28
2836092.....	27
2836789.....	27

**WIRE SEALS**

828904.....	23
828905.....	23
963530.....	21
964971.....	21
964972.....	21
1394133.....	21
1394511.....	25
1394512.....	25
1718705.....	21
1719043.....	25
1823111.....	25
2112323.....	21
2177018.....	25
2287497.....	21

TE Connectivity Ltd. is a \$14 billion global technology and manufacturing leader creating a safer, sustainable, productive, and connected future. For more than 75 years, our connectivity and sensor solutions, proven in the harshest environments, have enabled advancements in transportation, industrial applications, medical technology, energy, data communications, and the home. With 80,000 employees, including more than 8,000 engineers, working alongside customers in approximately 140 countries, TE ensures that **EVERY CONNECTION COUNTS**.



**te.com/ict**

**LET'S CONNECT**

We make it easy to connect with our experts and are ready to provide all the support you need. For additional information or product assistance, please contact your field representative or our customer service department. Additional information is also available on the website [te.com/ict](http://te.com/ict).

**TECHNICAL SUPPORT**

[te.com/support](http://te.com/support)

United States .....	+1 800 522 6752	China .....	+86 400 820 6015	Germany .....	+49 6151 607 1999
		Japan .....	+86 044 844 8052		

TE Connectivity, TE connectivity (logo), HDSCS, EVERY CONNECTION COUNTS, and AMP MCP are trademarks. All other logos, products and/or company names referred to herein might be trademarks of their respective owners.

The information given herein, including drawings, illustrations and schematics which are intended for illustration purposes only, is believed to be reliable. However, TE Connectivity makes no warranties as to its accuracy or completeness and disclaims any liability in connection with its use. TE Connectivity's obligations shall only be as set forth in TE Connectivity's Standard Terms and Conditions of Sale for this product and in no case will TE Connectivity be liable for any incidental, indirect or consequential damages arising out of the sale, resale, use or misuse of the product. Users of TE Connectivity products should make their own evaluation to determine the suitability of each such product for the specific application.

© 2019 TE Connectivity Ltd. family of companies All Rights Reserved.

1-1773971-7 02/19 Original

**TE Connectivity**

4849 Hempstead Station Drive  
Kettering, OH 45429  
USA

[www.te.com](http://www.te.com)

