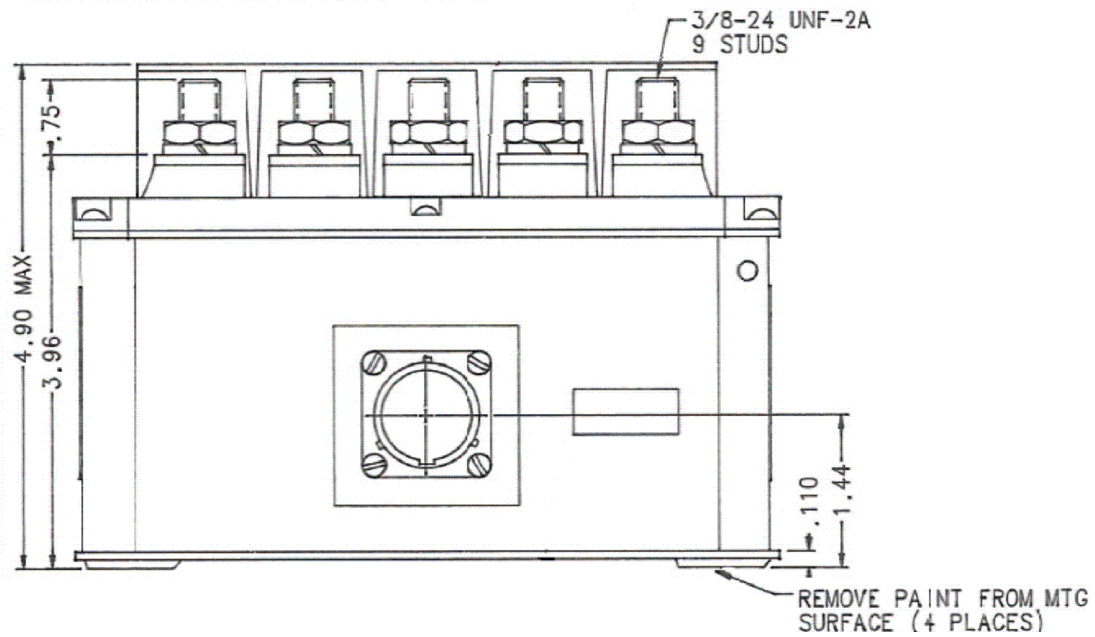
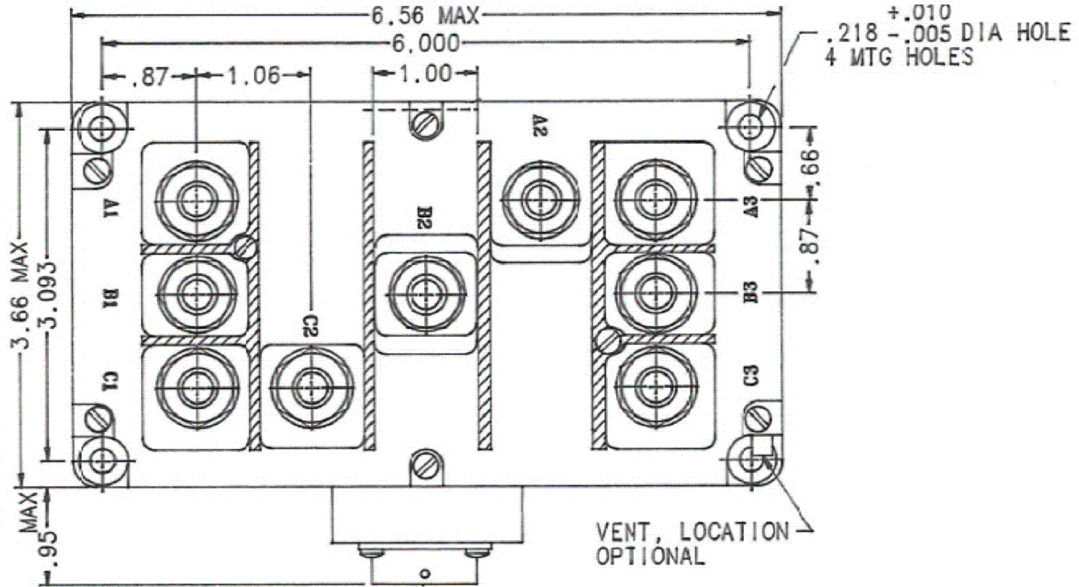


REVISIONS

| REV. | ECO | DESCRIPTION | DATE | APPROVED |
|------|-------|--|-----------|----------|
| M | 31243 | REDRAWN; ADDED FIND NOS 11, 12, AND 13 | 23OCT1996 | RSS |

B-345LS
 3PDT CENTEROFF DBL BRK
 225 AMP 115/200 VAC 400Hz



ALL DIMENSIONS ARE IN INCHES



TE CONNECTIVITY
 175 N. DIAMOND STREET MANSFIELD,
 OHIO 44902

TITLE

3PDT CENTEROFF DBL BRK
 225 AMP 115/200 VAC 400Hz

TE P.N.

1616044-3

DWG NO.

B-345LS

DS

DATA SHEET

CAGE CODE
 74063

SCALE
 NONE

SHEET
 1 OF 2

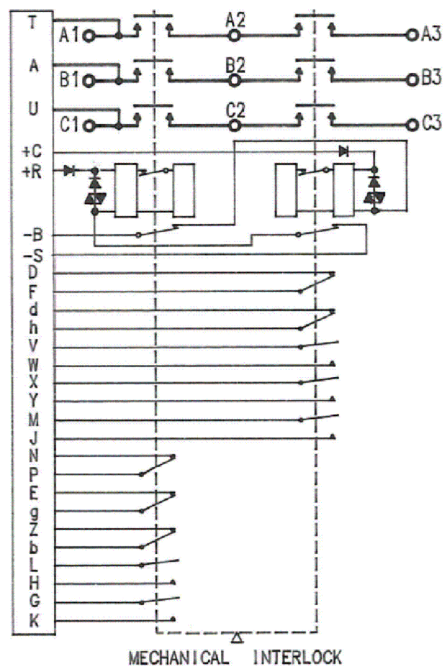
REV
 M

GENERAL SPECIFICATION

FAA/PMA

| | |
|--------------------|--|
| CONSTRUCTION | GASKET SEALED (VENTED) |
| MAIN CONTACTS | |
| CONFIGURATION | 3PDT CENTER OFF DOUBLE BREAK |
| VOLTAGE (NOMINAL) | 115/200 VAC 400 HZ |
| CURRENT: RES: | 225 AMPS |
| INTER: | 1000 AMPS |
| AUX. CONTACTS | |
| CONFIGURATION | 3 SPST N.C. R-S 2 SPST N.O. COIL |
| | 3 SPST N.O. C-B 2 SPST N.C. COIL |
| VOLTAGE (NOMINAL) | 28 VDC OR 200 VAC 400 HZ |
| CURRENT RES: | 5 AMP |
| IND: | 5 AMP |
| LAMP: | 1 AMP |
| COIL DATA | |
| DUTY CYCLE | CONTINUOUS (ECONOMIZING) |
| PICKUP VOLTAGE | 16 VDC AT 20°C |
| VOLTAGE (NOMINAL) | 18-30 VDC |
| DROPOUT | 1-14 VDC |
| PICKUP TIME | 25 MILLISECOND (MAX) |
| DROPOUT TIME | 20 MILLISECOND (MAX) |
| TRANSFER TIME | 25 MS MAX AT 28 VDC, 25°C |
| CURRENT INRUSH: | 5 AMPS |
| HOLD: | .350 AMPS |
| RES. PICKUP: | 7 OHM ±20% AT 20°C |
| HOLD: | 70 OHM ±20% AT 20°C |
| ENVIRONMENTAL DATA | |
| TEMPERATURE | -65°F TO 160°F |
| VIBRATION | PER MIL-E-5272 PROCEDURE XII, CURVE A |
| SHOCK | 15 G'S FOR 11 MILLISECONDS |
| ALTITUDE | 50,000 FEET |
| LIFE ELECTRICAL | 50,000 CYCLES W/RATED LOAD |
| LIFE MECHANICAL | 100,000 CYCLES |
| WEIGHT MAX. | 4.8 LBS. |

SCHEMATIC




 TE CONNECTIVITY
 175 N. DIAMOND STREET MANSFIELD,
 OHIO 44902

TITLE

3PDT CENTEROFF DBL BRK
225 AMP 115/200 VAC 400Hz

TE P.N.

1616044-3

DWG NO.

B-345LS

DS

DATA SHEET

CAGE CODE
74063

SCALE
NONE

SHEET
2 OF 2

REV
M