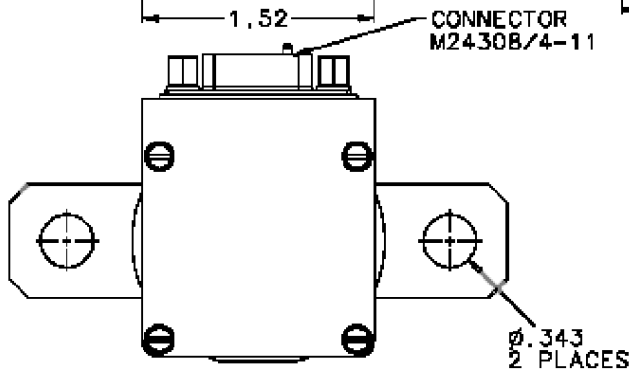
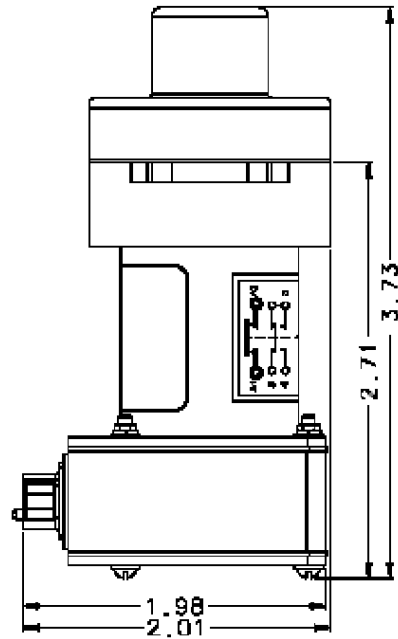
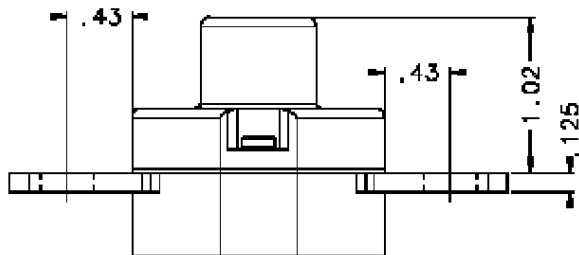
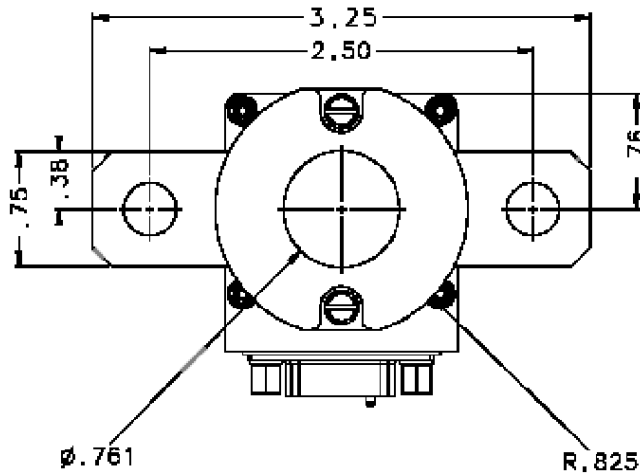


K-300B2C
 CONTACTOR SPST (DOUBLE BREAK)
 N.O. 200 AMP, 28 VDC

REVISIONS				
REV.	ECO	DESCRIPTION	DATE	APPROVED
K	06-001284	CORRECTED VIEW	13JAN2006	CB



CONNECTOR
 M2430B/4-11

ALL DIMENSIONS ARE IN INCHES



TE CONNECTIVITY
 175 N. DIAMOND STREET MANSFIELD,
 OHIO 44902

TITLE

CONTACTOR SPST (DOUBLE BREAK)
 N.O. 200 AMP, 28 VDC

TE P.N.

1616068-6

DWG NO.

K-300B2C

DS DATA SHEET

CAGE CODE
 74063

SCALE
 NONE

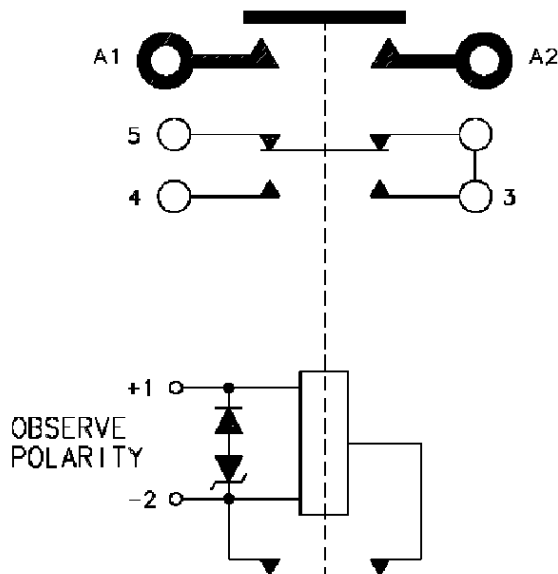
SHEET
 1 OF 2

REV
 K

GENERAL SPECIFICATION

CONSTRUCTION	GASKET SEALED
MAIN CONTACTS	
CONFIGURATION	SPST N.O. (DOUBLE BREAK)
VOLTAGE	28 VDC
CURRENT	
RESISTIVE	200 AMPS
INRUSH	1000 AMPS
RUPTURE	2000 AMPS
AUXILIARY CONTACTS	
CONFIGURATION	SPDT
VOLTAGE	28 VDC
CURRENT	
RESISTIVE	100 mA
COIL DATA	
DUTY CYCLE	CONTINUOUS (ECONOMIZED)
MAX OPERATE VOLTAGE	22-29 VDC
NOM OPERATE VOLTAGE	28 VDC
MAX PICKUP VOLTAGE	18 VDC MAX
DROPOUT VOLTAGE	7 VDC MAX
COIL CURRENT	
PICKUP	5.1 AMPS AT 25°C
HOLD	650 mA MAX AT 32 VDC AND 25°C
OPERATE TIME	35 mSEC MAX AT 28 VDC
RELEASE TIME	20 mSEC MAX AT 28VDC
BOUNCE TIME	5 mSEC MAX AT 28VDC
ENVIRONMENTAL DATA	
TEMPERATURE	-55°C TO +71°C
ALTITUDE	50,000 FEET
LIFE ELECTRICAL	50,000 CYCLES MIN.
LIFE MECHANICAL	100,000 CYCLES MIN.
WEIGHT MAX	.61 LBS.

SCHEMATIC



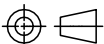
TE CONNECTIVITY
175 N. DIAMOND STREET MANSFIELD,
OHIO 44902

TITLE
CONTACTOR SPST (DOUBLE BREAK)
N.O. 200 AMP, 28 VDC

TE P.N.
1616068-6

DWG NO.
K-300B2C

THIRD ANGLE PROJECTION



THIS DRAWING PREPARED
IN ACCORDANCE WITH
ANSI/ASMEY14.5M-1982

CAGE CODE
74063

SCALE
NONE

SHEET
2 OF 2

REV
K