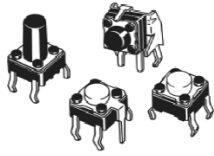


## Type KS Series



This is a standard light touch tactile switch assembly offered with a range of height settings and alternative tactile forces.

It is specified to in excess of 100,000 operations and is offered over a wide temperature range from -25°C to +70°C.

Talk to Tyco Electronics for your tactile switch requirements in conventional or surface mount packages.

### Key Features

- High Reliability
- Rated 24VDC 50mA
- Choice of Buttons / Forces
- 100,000 Operations minimum
- Temperature Range  
-25°C to +70°C
- Available in Bulk or Taped

## Tactile Switches

### Type KS Series

#### Characteristics - Electrical

<b>Power Rating:</b>	24V DC 50mA
<b>Contact Resistance:</b>	100m ohms maximum
<b>Insulation Resistance:</b>	100M ohms minimum at 100V DC
<b>Dielectric Strength:</b>	250V AC, 1 minute

#### Characteristics - Mechanical

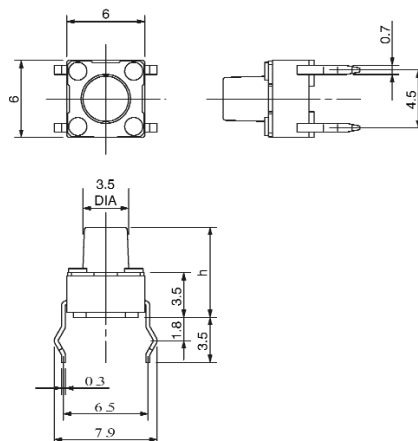
<b>Operational Life:</b>	10 <sup>5</sup> cycles After 100,000 operations, at 24 VDC, 50mA, resistive load, contact resistance shall be 200m ohms maximum, insulation resistance shall be 10M ohms minimum, Bounce shall be 10 sec. max., and operating force shall be max. ± 30% of the initial force
<b>Contact:</b>	Mechanical Contact, single pole, momentary action
<b>Operating Force:</b>	100gf (standard) 160gf (available on request) 260gf (available on request)
<b>Travel:</b>	0.25mm
<b>Return Force:</b>	10gf minimum
<b>Stop Strength:</b>	3kgf, 1 minute
<b>Terminal Strength:</b>	1kgf, 10 seconds (pull) 0.2kgf, 10 seconds (push) 0.5kgf, 10 seconds (bend)
<b>Contact Bounce:</b>	5m seconds maximum
<b>Temperature Range:</b>	-25°C to +70°C
<b>Low Temperature Test:</b>	-40°C, 500 hours, contact resistance shall be 200m ohms maximum and insulation resistance shall be 10M ohms minimum
<b>High Temperature Test:</b>	+85°C, 500 hours, contact resistance shall be 200m ohm maximum, and insulation resistance shall be 10M ohms minimum
<b>Humidity:</b>	After 500 hours at +40°C, 95% RH, contact resistance shall be 200m ohms maximum, and insulation resistance shall be 10M ohms minimum
<b>Flammability (U.L. class):</b>	Stem 94V - 1, Case 94HB

### Stem Colour

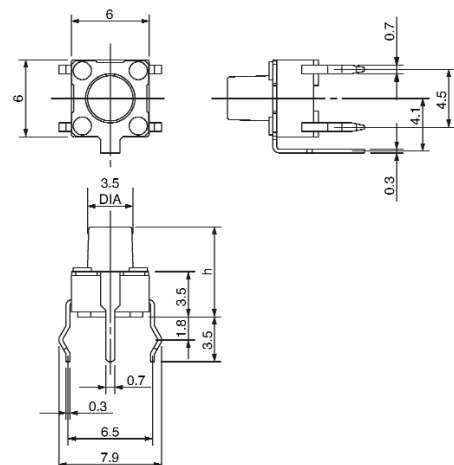
Light Grey	Cream		Medium Grey	Black	
0611A	0612A	0624A	0611B	0612B	0624B
	0613A	0632A		0613B	0632B
	0614A	0633A	0621B	0614B	0633B
	0622A	0634A		0622B	0634B
	0623A			0623B	

### Dimensions -

KSM0611A, KSM0612A (Top Actuated)



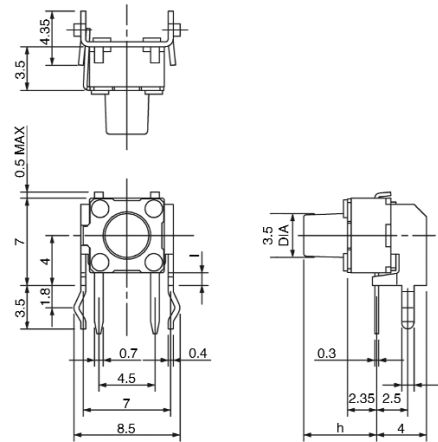
KSM0621A, KSM0622A (With Earth Terminal)



**Type KS Series**

**Dimensions (cont)**

KSM0632A (Side Actuated)



**Soldering Methods**

Where automatic flow soldering equipment is employed for soldering the following rules must be adhered to.

<b>Preheat Temperature:</b>	100°C maximum (Ambient temperature of printed circuit board on its soldering side)
<b>Preheat Time:</b>	45 seconds maximum
<b>Flux Foaming:</b>	Only to the extent that flux will be kept flush with the printed circuit board's top surface on which components are mounted. Preparatory flux must not be applied to the side of the printed circuit board on which components are mounted or to the area terminals are located.
<b>Soldering Temperature:</b>	255°C maximum
<b>Duration of Solder Immersion:</b>	5 seconds maximum
<b>Frequency of Soldering:</b>	2 times maximum
<b>Other Precautions:</b>	Following the soldering process, do not try to clean the switch with a solvent or similar agent Safeguard the switch assembly against flux penetration to its upper surface

**How to Order - Top Actuated**

KSM06	1	1	A	T
Switch Type	Construction	Button Height (H)	Operating Force	Pack Style
KSM06 - 6mm	1 - No Earth 2 - Earth Terminal	1 - 4.3mm 2 - 5.0mm 3 - 7.0mm 4 - 9.5mm	A - 100gf B - 160gf C - 260gf Buttons (1+2 only on C type)	- Bulk Pack T - Ammo Box 1000 pieces (See Over)

**How to Order - Side Actuated**

KSM06	3	2	A	T
Switch Type	Construction	Button Height (H)	Operating Force	Pack Style
KSM06 - 6mm	3 - Side Mount	2 - 3.85mm 3 - 5.85mm 4 - 8.35mm	A - 100gf B - 160gf	- Bulk Pack T - Ammo Box 1000 pieces (See Over)