

DUAL BAND WiFi (2400-2500 & 5150-5875MHz) ANTENNA, STAMPED METAL, SMD
 (802.11 a/b/g/n, includes frequencies of Bluetooth, ZigBee, and Wi-Fi products)

Part Number: 2108517-2

Product Facts

- This dual WiFi antenna Provides available SMT method Easy-to-use
- RoHS compliant
- Available in tape & reel



Recommendations

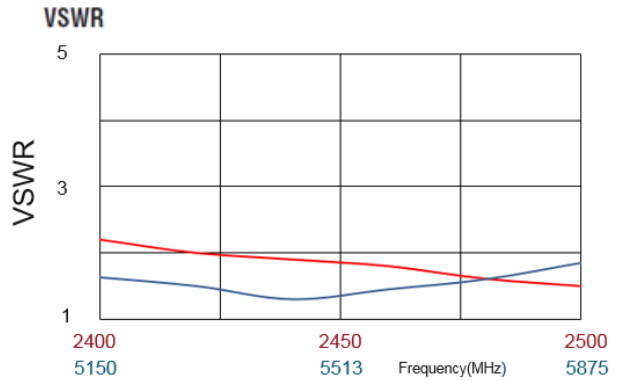
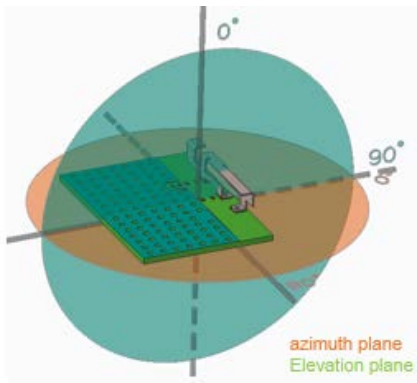
- Minimum matching circuits required
- This antenna provides very high performance and broad bandwidth.
- Bandwidth and performance is dependent on ground plane size.

Specifications

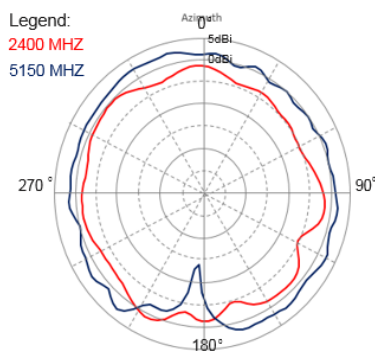
Frequency Range(MHz) -- 2400-2500; 5150-5875
 Peak Gain-- +3dBi
 VSWR-- <2.5:1
 Azimuth Beamwidth—Omni directional
 Power Handling— 10 Watt cw

Feed Point Impedance—50 ohms
 Size—22.75*2.4*4.8mm
 Weight— 0.33g
 Mounting—Surface-mount
 Keep Out Area—See diagram on page 2
 Reflow Temperature : 240°C Pb free solder process capable
 Operating Temperature Limit : -40~+85°C

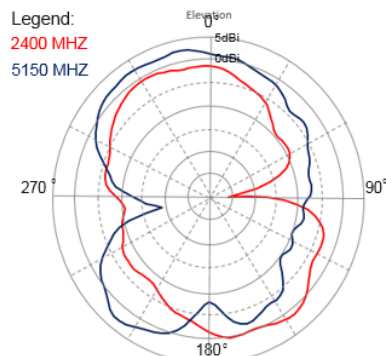
Test Orientation in Free Space



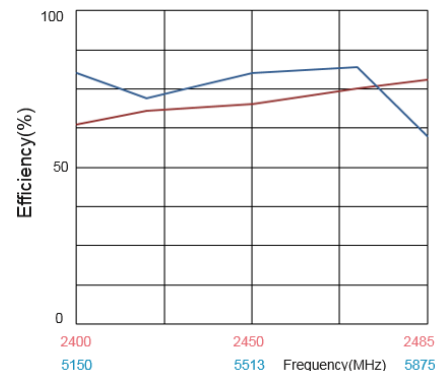
Azimuth



Elevation



Efficiency

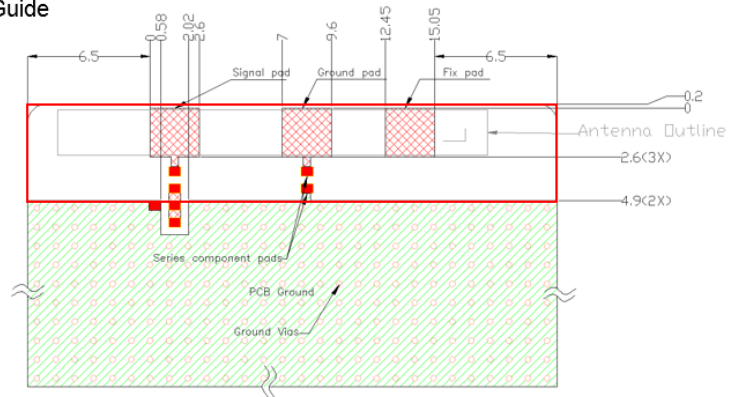



DUAL BAND WiFi (2400-2500 & 5150-5875MHz) ANTENNA, STAMPED METAL, SMD
 (802.11 a/b/g/n, includes frequencies of Bluetooth, ZigBee, and Wi-Fi products)

Part Number: 2108517-2

(Continued)

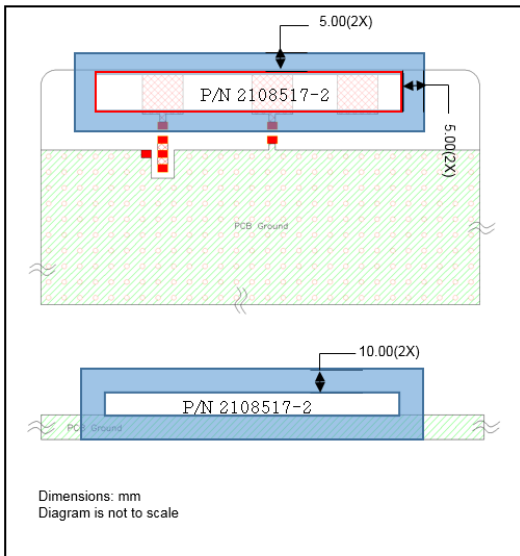
Mounting Guide



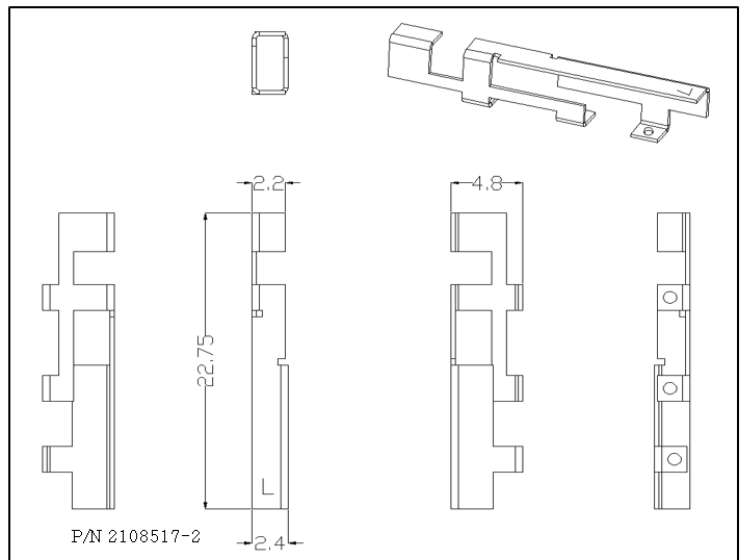
- NOTES: 1. Suggested matching component pads.
 2. Antenna must be mounted on the edge of PCB.
 3. NC = No connection (mechanical mounting pads).
 4. No copper allowed in designated area on all PCB layers - 
 5. For more information please call TE.

Dimensions: mm
 Diagram is not to scale

Keep Out Area



Approx. Dimensions



2x1 MIMO condition Architecture guide

Case : S21 Isoation : 2G : -15dB, 5G : -13dB

