

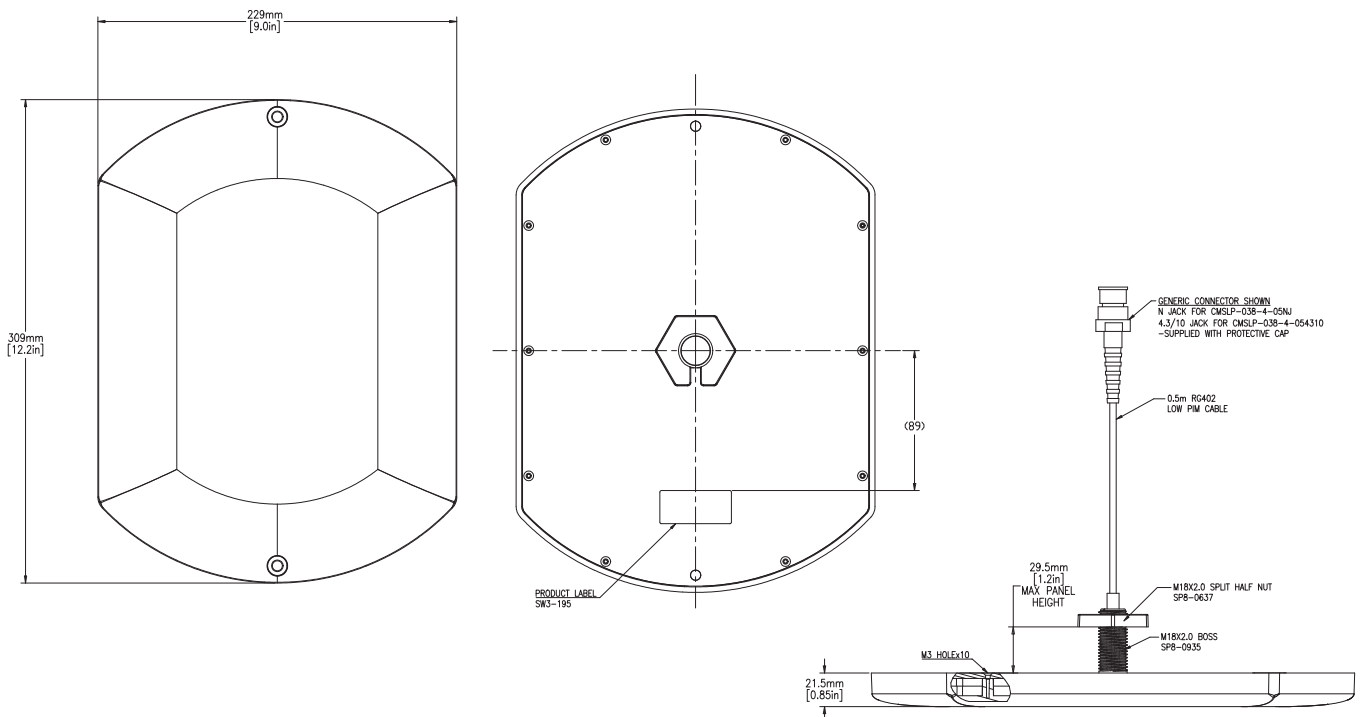
# SISO CEILING MOUNT UHF/3G/4G/5G ANTENNA

## LOW PROFILE ANTENNA FOR DAS NETWORKS

This antenna has been designed to provide SiSo UHF/3G/4G and 3.8GHz 5G coverage for DAS (distributed antenna system) networks in an ultra low profile package. The compact, robust low-profile housing contains a highly efficient antenna element covering 380-520/617-960/1710-3800MHz

At < 22mm height the antenna is extremely discreet and ideal for low clearance deployment locations. The antenna is designed to be ceiling mounted and can be fitted on any non-conductive panel. Supplied with integrated flame retardant low PIM (Passive Intermodulation) RG402 cable and a flame retardant radome the antenna is suitable for many environments.

### Technical Drawing



# SISO CEILING MOUNT 3G/4G/5G ANTENNA

COST EFFECTIVE 5G COVERAGE

Electrical Data		2363695-1	2363695-2
Frequency Range (MHz)		380-3800	
Operational band		3G/4G/5G	
Peak Realised Gain Isotropic	380-520MHz	2 dBi	
	617-960MHz	4 dBi	
	1710-3800MHz	4 dBi	
VSWR		< 2.2:1	
Polarisation		Vertical	
Pattern		Omni-Directional	
Passive Internod (2x20W, 3rd ord) dbC		<-150	
Impedance		50Ω	
Max Input Power (W)		50	
Mechanical Data			
Dimensions (mm)	Length (mm)	309 (12.2")	
	Height (mm)	229 (9.0")	
	Depth (mm)	21.5 (0.85")	
Operating Temp (°C)		-40 to +80°C (-40 to 176°F)	
Material		FR ABS	
Colour		White	
Typical weight (g)		780	
Ingress Protection		IP66	
Mounting Data			
Fixing		Panel mount - 18mm (3/4") / 2x 6mm (1/4") Screws	
Max Panel thickness		29.5mm (1.2")	
Cable Data			
Type		403 Low PIM Flame Retardant Cable	
Diameter (mm)		4 (0.16")	
Length (m)		0.5 (1.6")	
Termination		N-type female	4.3-10 female

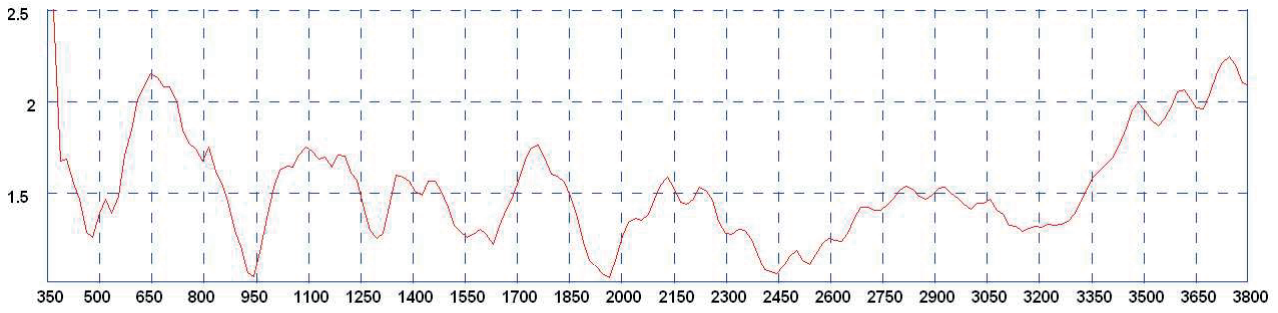
Peak gain simulated with no ground plane and excluding cable loss

Typical VSWR stated as measured with 0.5m (1.5+') of cable

# SISO CEILING MOUNT 3G/4G/5G ANTENNA

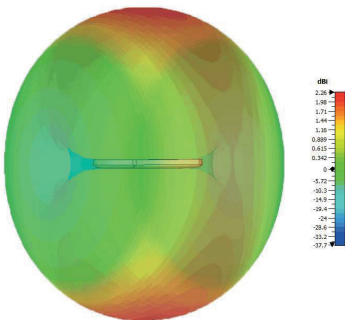
## COST EFFECTIVE 5G COVERAGE

Typical VSWR \*

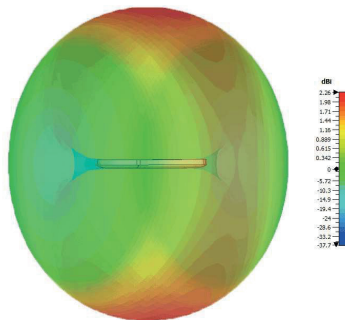


\* VSWR measured with 0.5m (1.5') of RG402 cable and no ground plane

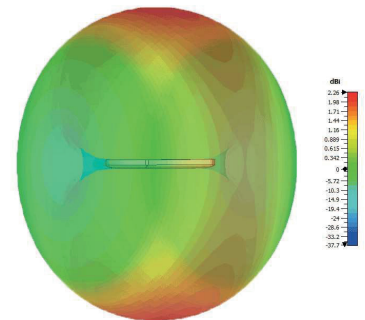
Typical 3D Pattern- Side (400MHz)



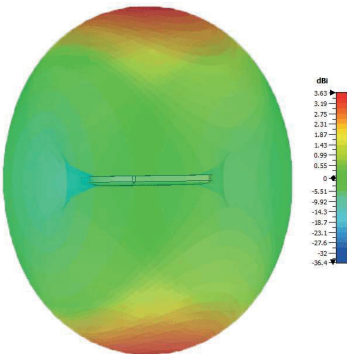
Typical 3D Pattern- Side (500MHz)



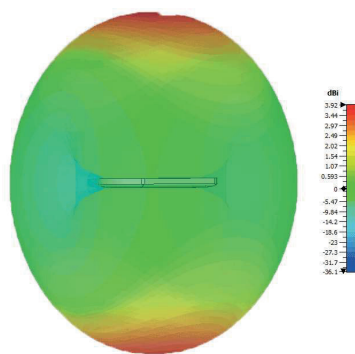
Typical 3D Pattern- Side (700MHz)



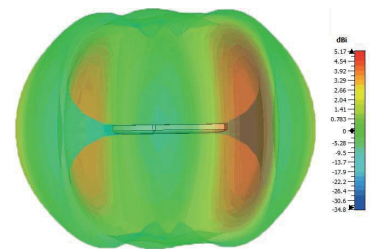
Typical 3D Pattern- Side (800MHz)



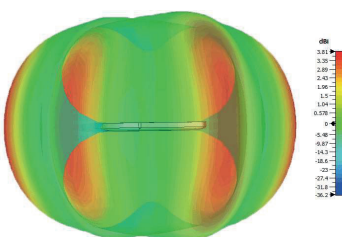
Typical 3D Pattern- Side (900MHz)



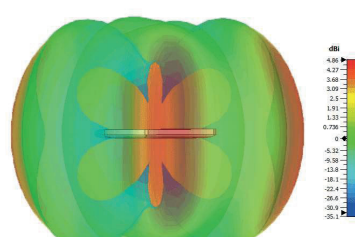
Typical 3D Pattern- Side (1800MHz)



Typical 3D Pattern- Side (2000MHz)



Typical 3D Pattern- Side (2600MHz)



Typical 3D Pattern- Side (3600MHz)

