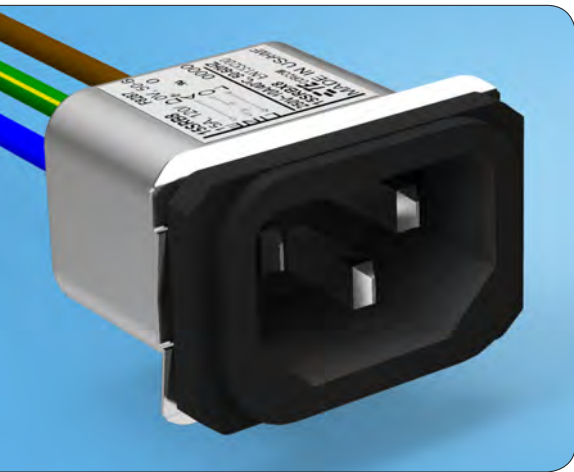


## Introducing Corcom SRB Series Power Line Filter with Slide-in Mounting Style

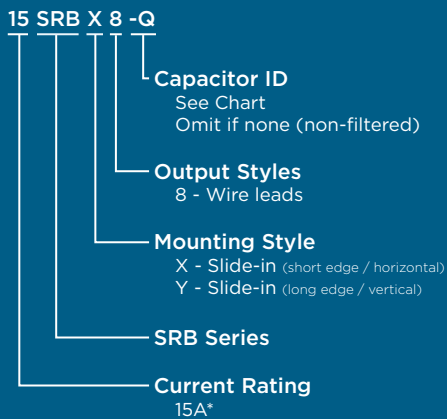
The newest addition to the Corcom SRB Series filter features a unique, panel mounting option. This new slide-in mounting approach provides a simple, cost effective installation method, reducing the need for additional mounting hardware. The slide-in product offers two versions of the new mounting style with either retention capability along the short edges of the filter (X style) or retention capability along the long edges (Y style).



**KEY FEATURES**

- Unique slide-in mounting style
- UL Recognized and CSA Certified for 15A @ 250VAC
- VDE Approved for 10A @ 250VAC
- Filtered or non-filtered
- Compact depth
- X version slides in on short sides
- Y version slides in on long sides

**ORDERING INFORMATION**



\* 15A versions are tested by Underwriters Laboratories to US and Canadian requirements and are VDE approved at 10A, 250VAC

**STANDARDS AND SPECIFICATIONS**



- UL Recognized
- CSA Certified
- VDE Approved

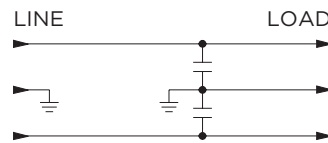
**APPLICATIONS**

- Communications
- Computer and Consumer Electronics
- Industrial and Commercial
- Instrumentation and Medical Equipment

**ELECTRICAL SPECIFICATIONS**

	Capacitor ID	Value	@ 120 VAC 60 Hz	@ 250 VAC 50 Hz
Max. Leakage current each Line to Ground:	(blank)	-	2µA	5µA
	<b>Q</b>	33pF	2.1µA	3.65µA
	<b>R</b>	100pF	9.6µA	16.6µA
	<b>S</b>	220pF	19.2µA	33.2µA
	<b>T</b>	330pF	24.0µA	41.5µA
	<b>W</b>	470pF	0.04mA	0.07mA
	<b>X</b>	1000pF	0.07mA	0.13mA
Rated Currents:	15A*			
Rated Voltage (max):	250 VAC			
Operating Frequency:	50/60 Hz			

**ELECTRICAL SCHEMATIC**

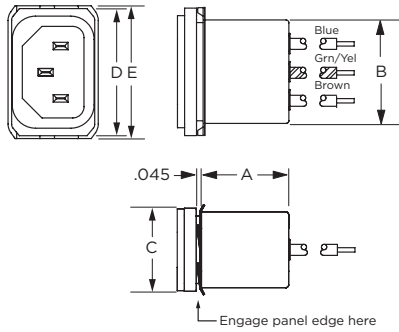


**PRODUCT OFFERING**

<b>5-1609987-6:</b>	15SRBX8	<b>6-1609987-5:</b>	15SRBY8
<b>5-1609987-7:</b>	15SRBX8-Q	<b>6-1609987-6:</b>	15SRBY8-Q
<b>5-1609987-8:</b>	15SRBX8-R	<b>6-1609987-7:</b>	15SRBY8-R
<b>5-1609987-9:</b>	15SRBX8-S	<b>6-1609987-8:</b>	15SRBY8-S
<b>6-1609987-0:</b>	15SRBX8-T	<b>6-1609987-9:</b>	15SRBY8-T
<b>6-1609987-1:</b>	15SRBX8-W	<b>7-1609987-0:</b>	15SRBY8-W
<b>6-1609987-2:</b>	15SRBX8-X	<b>7-1609987-1:</b>	15SRBY8-X

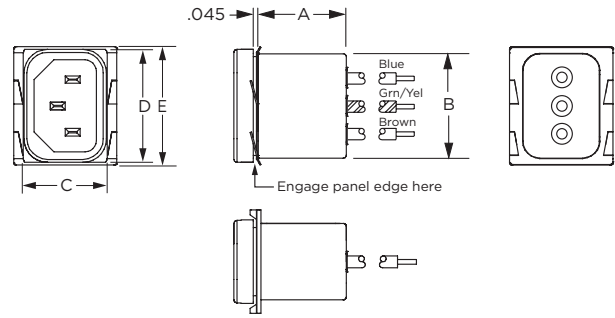
CASE STYLES

SRBX8



Typical Dimensions:  
 Line Inlet (1): IEC 60320-1 C14  
 Wire Leads: 4.0 [101.6] Min., 18AWG, UL1015

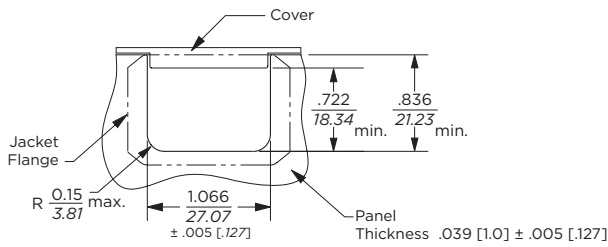
SRBY8



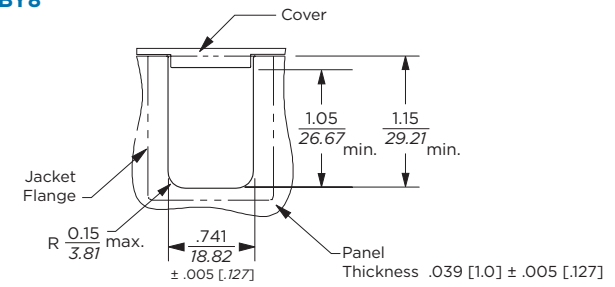
Typical Dimensions:  
 Line Inlet (1): IEC 60320-1 C14  
 Wire Leads: 4.0 [101.6] Min., 18AWG, UL1015

RECOMMENDED PANEL CUTOUTS

SRBX8



SRBY8



CASE DIMENSIONS

Part No.	A (max)	B (max)	C (max)	D (max)	E (max)
15SRBX8	0.95	1.11	0.89	1.35	1.41
	24.1	28.2	22.61	34.29	35.81
15SRBY8	0.95	1.11	0.89	1.30	2.78
	85.34	46.23	32.51	60.325	34.54

PERFORMANCE DATA

Common Mode / Asymmetrical (Line to Ground) Minimum Insertion Loss - Measured in closed 50 Ohm system

Capacitor ID	Frequency – MHz					
	1	5	10	50	100	300
Q	-	-	-	-	-	20
R	-	-	-	3	6	22
S	-	-	1	6	17	19
T	-	-	2	13	13	19
W	-	2	4	18	13	20
X	-	5	9	25	10	17

## FOR MORE INFORMATION

corcom.com

### TE Technical Support Center

Internet: [te.com/help](http://te.com/help)  
USA: +1 (800) 522-6752  
Canada: +1 (905) 475-6222  
Mexico: +52 (0) 55-1106-0800  
Latin/S. America: +54 (0) 11-4733-2200  
Germany: +49 (0) 6251-133-1999  
UK: +44 (0) 800-267666  
France: +33 (0) 1-3420-8686  
Netherlands: +31 (0) 73-6246-999  
China: +86 (0) 400-820-6015

Part numbers in this brochure are RoHS Compliant\*, unless marked otherwise.

\*as defined [www.te.com/leadfree](http://www.te.com/leadfree)

### te.com

© 2011 Tyco Electronics Corporation, a TE Connectivity Ltd. company. All Rights Reserved.  
4-1773450-8 CIS JG 06/2011

TE Connectivity, TE connectivity (logo) and TE (logo) are trademarks. Other logos, product and/or company names might be trademarks of their respective owners.

---

While TE has made every reasonable effort to ensure the accuracy of the information in this brochure, TE does not guarantee that it is error-free, nor does TE make any other representation, warranty or guarantee that the information is accurate, correct, reliable or current. TE reserves the right to make any adjustments to the information contained herein at any time without notice. TE expressly disclaims all implied warranties regarding the information contained herein, including, but not limited to, any implied warranties of merchantability or fitness for a particular purpose. The dimensions in this catalog are for reference purposes only and are subject to change without notice. Specifications are subject to change without notice. Consult TE for the latest dimensions and design specifications.

