

AMP-LATCH RIBBON CABLE INTERCONNECT SOLUTIONS

Quick Reference Guide

AMP-LATCH connectors are ribbon cable-to-board devices used to make the transition between ribbon cable and pc board circuitry. They find heavy use within equipment to connect one board to another or one subsystem to another.

This guide illustrates the recommended range of IDC connectors available through the TE Connectivity brands. While this selector guide includes the more commonly used products which terminate to a 0.050" [1.27mm] ribbon cable pitch, TE Connectivity also offers connectors which terminate to 0.025" [0.64mm] and 0.39" [1.0mm] ribbon cable.

FEATURES AND BENEFITS

- Mass termination capabilities
- No need to strip or prepare wire
- Labor savings

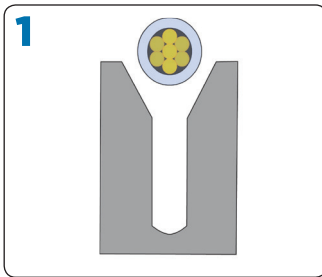
PRODUCT APPLICATIONS

- Computers/Electronics
- Business Equipment
- Medical Equipment

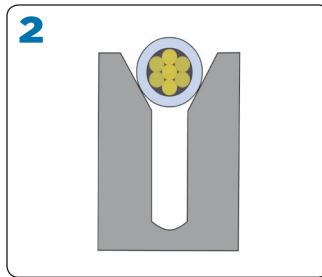
te.com/products/ribboncable

AMP-LATCH Ribbon Cable Interconnect Solutions

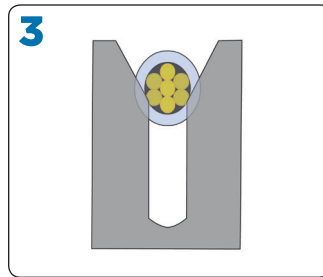
IDC Termination



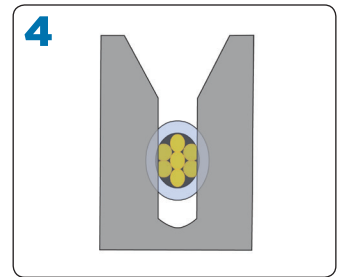
1 The wire must be aligned with the IDC slot



2 As insertion begins, the wire insulation is displaced.



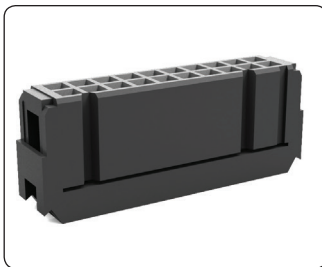
3 Insulation displacement is completed and conductor strands begin to deform.



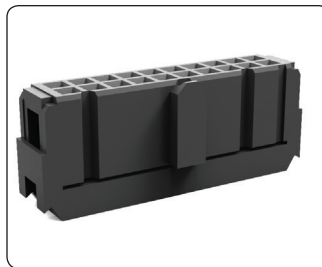
4 As the conductor is pushed further into the slot, strand deformation is completed and beam deflection occurs. The connection is established and maintained by high residual beam force.

Polarization

Receptacles



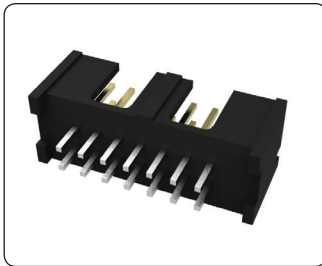
1658620-4
Military



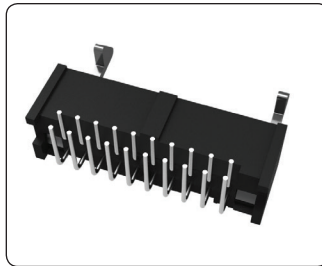
1658621-4
Center and Military



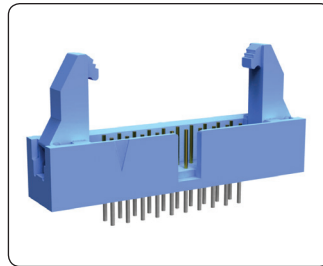
1658624-4
Dual



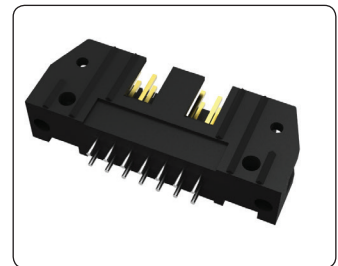
5103308-2
Center and Dual



1761607-7
Military and Center



1761688-7
Center



5102153-2
Military, Center and Dual

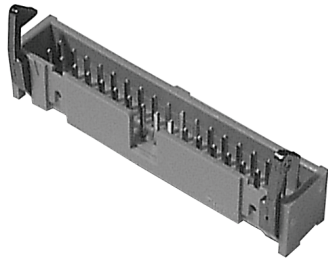
Application Tooling

AMP-LATCH HEADER TOOLING	
Press-Fit Universal Header Tooling	
Seating Tool	91085-2
PCB Transition Connectors/DIP Plugs Tooling	
Universal Hand Tool Kit	768340-1
Connector Specific Kit	768347-1

AMP-LATCH RECEPTACLE TOOLING	
Manual Tooling	
Arbor Frame Assembly	91085-2
Connector Specific Kit	768341-1
Universal Base Assembly	768338-1
Pneumatic Tooling	
Pneumatic Arbor Press	91112-2
Connector Specific Kit	768341-1
Universal Base Assembly	768338-1
Hand Tooling	
Universal Hand Tool Kit	768340-1

AMP-LATCH .050" [1.27MM] STANDARD PRODUCT OFFERING

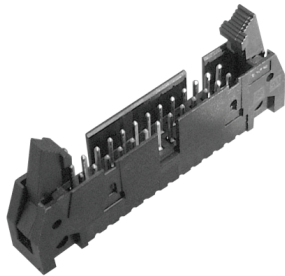
AMP-LATCH Low Profile Headers



- **Contact material:** Brass / Phosphor Bronze*
- **Contact area plating:** 0.38um, Au flash over PdNi plating
0.76um, Au over PdNi underplating*
- **Color:** Black
- **Insulation material:** Glass Filled Nylon / PBT*
- **Flammability:** UL 94V-0
- **Current rating:** 1A
- **Insulation resistance:** 5000 MΩ Minimum
- **Dielectric strength:** 1,000 V rms
- **Temperature rating:** -65 to +105C

WITHOUT LATCHES			WITH SHORT LATCHES			WITH LONG LATCHES		
No of Positions	Vertical	Right Angle	No of Positions	Vertical	Right Angle	No of Positions	Vertical	Right Angle
10	5103308-1	5103310-1	10	1761608-3	1761609-3	10	1761606-3	1761607-3
14	5103308-2	5103310-2	14	1761608-5	1761609-5	14	1761606-5	1761607-5
16	5103308-3	5103310-3	16	1761608-6	1761609-6	16	1761606-6	1761607-6
20	5103308-5	5103310-5	20	1761608-7	1761609-7	20	1761606-7	1761607-7
26	5103308-6	5103310-6	26	1761608-9	1761609-9	26	1761606-9	1761607-9
34	5103308-7	5103310-7	34	1-1761608-1	1-1761609-1	34	1-1761606-1	1-1761607-1
40	5103308-8	5103310-8	40	1-1761608-3	1-1761609-3	40	1-1761606-3	1-1761607-3
50	1-5103308-0	1-5103310-0	50	1-1761608-5	1-1761609-5	50	1-1761606-5	1-1761607-5
60	Inquire for availability		60	1-1761608-6	1-1761609-6	60	1-1761606-6	1-1761607-6

AMP-LATCH Universal Ejection Style Pin Headers

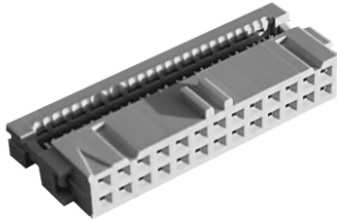


- **Contact material:** Brass
- **Contact area plating:** 0.38um, Au flash over PdNi plating
- **Color:** Black
- **Insulation material:** Glass Filled Nylon or Polyester
- **Flammability:** UL 94V-0
- **Current rating:** 1A
- **Insulation resistance:** $1 \times 10^9 \Omega$
- **Dielectric strength:** 1,000 V rms
- **Temperature rating:** -55 to +105C

WITHOUT LATCHES			WITH SHORT LATCHES			WITH LONG LATCHES		
No of Positions	Vertical	Right Angle	No of Positions	Vertical	Right Angle	No of Positions	Vertical	Right Angle
10	5102153-1	5102159-1	10	5499910-1	5499913-1	10	5499922-1	5499786-1
14	5102154-2	5102159-2	14	5499910-2	5499913-2	14	5499922-2	5499786-2
16	5102153-3	5102159-3	16	5499910-3	5499913-3	16	5499922-3	-
20	5102153-4	5102159-4	20	5499910-4	5499913-4	20	5499206-4	5499786-4
26	5102153-6	5102159-6	26	5499910-6	5499913-6	26	5499922-6	5499786-6
34	5102153-8	5102159-8	34	5499910-8	5499913-8	34	5499922-8	5499786-8
40	5102153-9	5102159-9	40	5499910-9	5499913-9	40	5499922-9	5499786-9
50	1-5102153-0	1-5102159-0	50	1-5499910-0	1-5499913-0	50	1-5499922-0	1-5499786-0
60	Inquire for availability		60	-	1-5499913-1	60	1-5499922-1	1-5499786-1

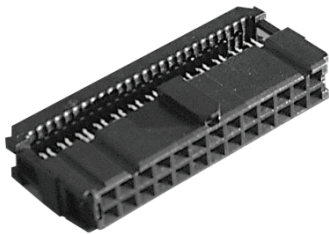
AMP-LATCH .050" [1.27MM] STANDARD PRODUCT OFFERING CONTINUED

AMP-LATCH Headers



- **Contact material:** Phosphor Bronze
- **Contact area plating:** 0.8um Au
- **Color:** Grey
- **Insulation material:** Thermoplastic Polyester
- **Flammability:** UL 94V-0
- **Current rating:** 1A
- **Insulation resistance:** $1 \times 10^9 \Omega$
- **Dielectric strength:** 500V
- **Temperature rating:** -65 to +105C

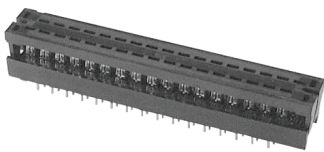
GREY, 0.8UM GOLD PLATING		
No of Positions	Vertical	Strain Relief
10	1761608-3	1761609-3
14	1761608-5	1761609-5
16	1761608-6	1761609-6
20	1761608-7	1761609-7
26	1761608-9	1761609-9
34	1-1761608-1	1-1761609-1
40	1-1761608-3	1-1761609-3
50	1-1761608-5	1-1761609-5
60	1-1761608-6	1-1761609-6



- **Contact material:** Phosphor Bronze
- **Contact area plating:** 0.4um Au
- **Color:** Black
- **Insulation material:** Thermoplastic
- **Flammability:** UL 94V-0
- **Current rating:** 1A
- **Insulation resistance:** $1 \times 10^9 \Omega$
- **Dielectric strength:** 1000V
- **Temperature rating:** -65 to +105C

BLACK, 0.4UM GOLD PLATING		
No of Positions	Vertical	Strain Relief
10	5102153-1	5102159-1
14	5102154-2	5102159-2
16	5102153-3	5102159-3
20	5102153-4	5102159-4
26	5102153-6	5102159-6
34	5102153-8	5102159-8
40	5102153-9	5102159-9
50	1-5102153-0	1-5102159-0

AMP-LATCH PCB Transition Connectors / DIP Plugs



- **Contact material:** Phosphor Bronze
- **Contact area plating:** Sn
- **Color:** Black
- **Insulation material:** Thermoplastic
- **Flammability:** UL 94V-0
- **Current rating:** 1A
- **Insulation resistance:** $1 \times 10^9 \Omega$
- **Dielectric strength:** 500VAC
- **Temperature rating:** -65 to +105C

DIP PLUGS	
No of Positions	Vertical
10	2-746610-1
14	2-746610-2
16	1-746610-4
20	1-746610-5
26	1-746610-6
34	1-746610-8
40	1-746610-9
50	2-746610-0
60	2-746610-4

RIBBON CABLE CONNECTOR SELECTION GUIDE BY CENTERLINE

RIBBON CABLE CONNECTOR SOLUTIONS										
Ribbon Cable Centerline (P)	Mating Footprint		Product Family	Contact Rows	Positions	Wire AWG	Termination Style	Operating Temp	Polarization	Mates to
	X	Y								
0.64mm [0.025in]	1.27mm [0.050in]	2.54mm [0.100in]	System 50 Receptacles	Double	select 10-100	30-32	IDC	-65°C to +105°C	Center only	System 50 Shrouded Headers
	See Drawing 5111595 or 111595		System 50 Paddleboard	4 row staggered	select 10-100		IDC	-65°C to +105°C	n/a	PCB
1.00mm [0.040in]	2.00mm [0.08in]	2.00mm [0.08in]	2mm Recept	Double	select 8-50	28	IDC	-65°C to +105°C	Center or none	2mm Modu
1.27mm [0.050in]	1.27mm [0.050in]	1.27mm [0.050in]	Micro-MaTch	Double	select 4-24	20-28	IDC	-40°C to +105°C	Yes, except MOB SMD	Micro-MaTch
	2.54mm [0.100in]	2.54mm [0.100in]	AMP-LATCH Receptacles	Double	select 10-64	28-26	IDC	-65°C to +105°C	Military, Military & Center, Dual	Universal & Low Pro Headers, Universal I/O
	2.54mm [0.100in]	2.54mm [0.100in]	Female Socket Connectors	Double	select 6-64	30-26	IDC	-55°C to +125°C	Military, Military & Center	Universal & Low Pro Headers, Universal I/O
	2.54mm [0.100in]	2.54mm [0.100in]	Universal I/O	Double	select 10-64	26-28	IDC	-65°C to +105°C	--	Novo Receptacles or Female Socket Connectors w/ mil or mil & center polarization
	2.54mm [0.100in]	2.54mm [0.100in]	DIP Plugs	Double	select 6-64	30-26	IDC	-65°C to +105°C	--	DIP sockets
	2.54mm [0.100in]	7.60mm [0.300in]	DIP Plugs	Double	select 6-64		IDC	-65°C to +105°C	--	DIP sockets
	2.54mm [0.100in]	15.20mm [0.600in]	DIP Plugs	Double	select 6-64		IDC	-65°C to +105°C	--	DIP sockets
	See Drawing 746603		EUROLATCH Receptacles	Three row hsg - Two rows loaded	64	30-26	IDC	-65°C to +105°C	--	Eurocard R/A & Vertical Pin Headers

RIBBON CABLE CONNECTOR SOLUTIONS										
Ribbon Cable Centerline (P)	Mating Footprint		Product Family	Contact Rows	Positions	Wire AWG	Termination Style	Operating Temp	Polarization	Mates to
	X	Y								
0.64mm [0.025in]	1.27mm [0.050in]	2.54mm [0.100in]	System 50 Shrouded Headers	Double	select 10-100	--	SMT, Thru-Hole	-65°C to +105°C	Center, Dual or none	System 50 Receptacles
1.00mm [0.040in]	2.00mm [0.080in]	2.00mm [0.080in]	2mm Modu Headers	Double	select 8-120	--	SMT, Thru-Hole	-65°C to +105°C	Center or none	2mm Receptacles
1.27mm [0.050in]	2.54mm [0.100in]	2.54mm [0.100in]	Low Pro Headers	Double	select 10-60	--	PCB, Solder Thru-Hole	-65°C to +105°C	Center & Dual, Military & Center, Center only	AMPMODU Board Mount Receptacle, Mod IV Receptacle w/ Center , Polarization, Novo Receptacles, Female Socket Connectors
	2.54mm [0.100in]	2.54mm [0.100in]	Universal Headers	Double	select 10-64	--	PCB, Solder Thru Hole & Action Pin	-65°C to +105°C	Military, Military & Center, Dual	AMPMODU Board Mount Receptacles, Novo Receptacles, Female Socket Connectors
	2.54mm [0.100in]	2.54mm [0.100in]	DIP Sockets	Double	select 6-64	--	PCB, Solder Thru Hole & Action Pin	-55°C to +105°C (Tin) -55°C to +105°C (Gold)	--	DIP Plugs
	2.54mm [0.100in]	7.60mm [0.300in]	DIP Sockets	Double	select 6-64	--	PCB, Solder Thru Hole & Action Pin	-55°C to +105°C (Tin) -55°C to +105°C (Gold)	--	DIP Plugs
	2.54mm [0.100in]	15.20mm [0.600in]	DIP Sockets	Double	select 6-64	--	PCB, Solder Thru Hole & Action Pin	-55°C to +105°C (Tin) -55°C to +105°C (Gold)	--	DIP Plugs
	2.54mm [0.100in]	2.54mm [0.100in]	Eurocard Pin Headers	Three row hsg - Two rows loaded	64	--	PCB, Solder Thru Hole & Action Pin	-55°C to +125°C	--	EUROLATCH Receptacles

FOR MORE INFORMATION

TE Technical Support Center

USA:	+1 (800) 522-6752
Canada:	+1 (905) 475-6222
Mexico	+52 (0) 55-1106-0800
Latin/S. America:	+54 (0) 11-4733-2200
Germany:	+49 (0) 6251-133-1999
UK:	+44 (0) 800-267666
France:	+33 (0) 1-3420-8686
Netherlands:	+31 (0) 73-6246-999
China:	+86 (0) 400-820-6015

Part numbers in this brochure are RoHS Compliant*, unless marked otherwise.

*as defined www.te.com/leadfree

te.com

AMP-LATCH, AMPMODU, EUROLATCH, Micro-MaTch, TE Connectivity, TE Connectivity (logo) and Every Connection Counts are trademarks. All other logos, products and/or company names referred to herein might be trademarks of their respective owners.

The information given herein, including drawings, illustrations and schematics which are intended for illustration purposes only, is believed to be reliable. However, TE Connectivity makes no warranties as to its accuracy or completeness and disclaims any liability in connection with its use. TE Connectivity's obligations shall only be as set forth in TE Connectivity's Standard Terms and Conditions of Sale for this product and in no case will TE Connectivity be liable for any incidental, indirect or consequential damages arising out of the sale, resale, use or misuse of the product. Users of TE Connectivity products should make their own evaluation to determine the suitability of each such product for the specific application.

© 2018 TE Connectivity Ltd. family of companies All Rights Reserved.

7-1773458-6 02/18