

967376-2 ✓ ACTIVE

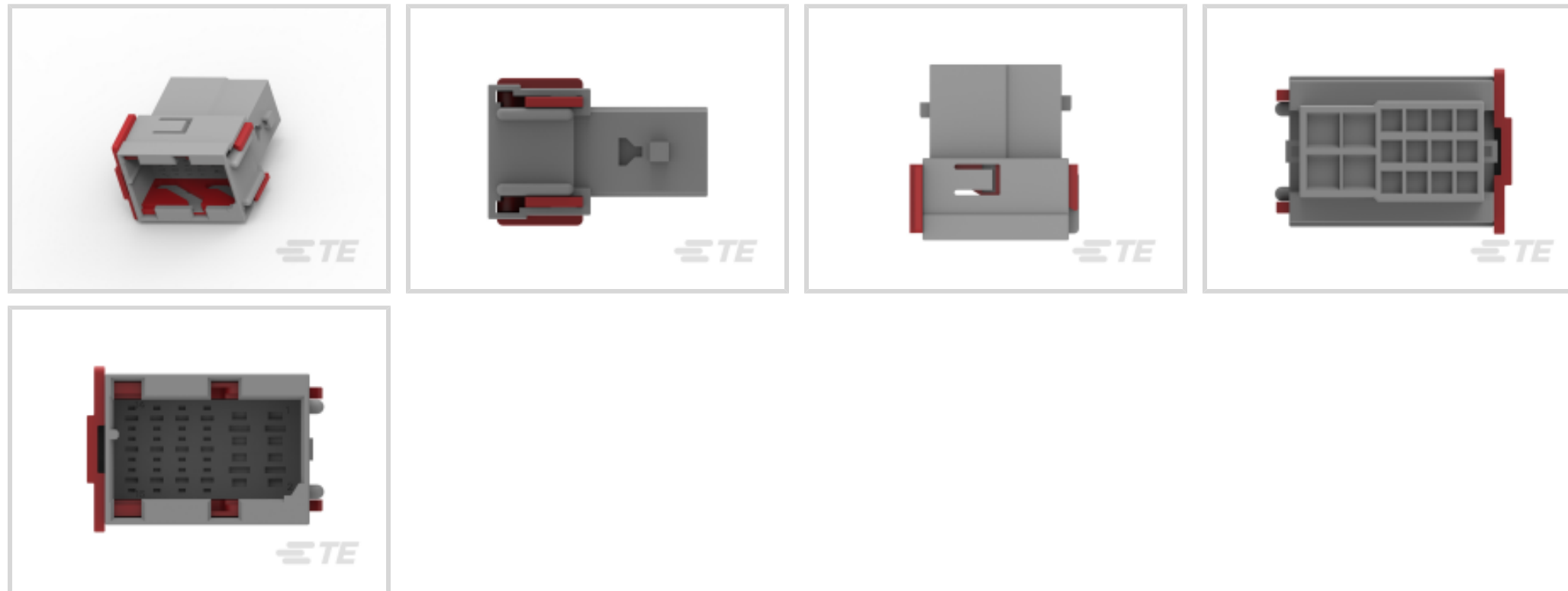
TE Internal #: 967376-2

Housing for Male Terminals, 16 Position, .137 in / .196 in [5 mm / 3.5 mm] Centerline, Gray, Wire & Cable, Cable Mount (Free-Hanging), Key 2

[View on TE.com >](#)



Connectors > Automotive Connectors > Automotive Housings



Number of Positions: 16

Connector & Housing Type: Housing for Male Terminals

Centerline (Pitch): 3.5 mm, 5 mm [ .137 in, .196 in ]

Sealable: No

Mating Tab Width: 1.6 mm, 2.8 mm [ .062 in, .11 in ]

## Features

### Product Type Features

|                                   |                            |
|-----------------------------------|----------------------------|
| Mixed & Hybrid Connector          | Yes                        |
| Connector & Housing Type          | Housing for Male Terminals |
| Sealable                          | No                         |
| Connector & Contact Terminates To | Wire & Cable               |
| Primary Locking Feature           | Integrated in Housing      |

### Configuration Features

|                     |    |
|---------------------|----|
| Number of Positions | 16 |
| Number of Rows      | 3  |

### Body Features

|                         |      |
|-------------------------|------|
| Primary Product Color   | Gray |
| Connector & Keying Code | 2    |

### Contact Features

|              |              |
|--------------|--------------|
| Contact Size | 1.5mm, 2.8mm |
| Contact Type | Tab          |



|                  |                                   |
|------------------|-----------------------------------|
| Mating Tab Width | 1.6 mm, 2.8 mm [.062 in] [.11 in] |
|------------------|-----------------------------------|

### Mechanical Attachment

|                         |                            |
|-------------------------|----------------------------|
| Connector Mounting Type | Cable Mount (Free-Hanging) |
|-------------------------|----------------------------|

### Housing Features

|                    |                                  |
|--------------------|----------------------------------|
| Centerline (Pitch) | 3.5 mm, 5 mm [.137 in] [.196 in] |
|--------------------|----------------------------------|

### Other

|                                      |    |
|--------------------------------------|----|
| Connector Position Assurance Capable | No |
|--------------------------------------|----|

## Product Compliance

[For compliance documentation, visit the product page on TE.com>](#)

|   |   |
|---|---|
| EU RoHS Directive 2011/65/EU                  | Compliant   |
| EU ELV Directive 2000/53/EC                   | Compliant   |
| China RoHS 2 Directive MIIT Order No 32, 2016 | No Restricted Materials Above Threshold   |
| EU REACH Regulation (EC) No. 1907/2006        | Current ECHA Candidate List: JUNE 2023 (235)<br>Candidate List Declared Against: JUNE 2023 (235)<br>Does not contain REACH SVHC |
| Halogen Content                               | BFR/CFR/PVC Free, but Br/Cl >900 ppm in other sources.  |
| Solder Process Capability                     | Not applicable for solder process capability  |

#### Product Compliance Disclaimer

This information is provided based on reasonable inquiry of our suppliers and represents our current actual knowledge based on the information they provided. This information is subject to change. The part numbers that TE has identified as EU RoHS compliant have a maximum concentration of 0.1% by weight in homogenous materials for lead, hexavalent chromium, mercury, PBB, PBDE, DBP, BBP, DEHP, DIBP, and 0.01% for cadmium, or qualify for an exemption to these limits as defined in the Annexes of Directive 2011/65/EU (RoHS2). Finished electrical and electronic equipment products will be CE marked as required by Directive 2011/65/EU. Components may not be CE marked. Additionally, the part numbers that TE has identified as EU ELV compliant have a maximum concentration of 0.1% by weight in homogenous materials for lead, hexavalent chromium, and mercury, and 0.01% for cadmium, or qualify for an exemption to these limits as defined in the Annexes of Directive 2000/53/EC (ELV). Regarding the REACH Regulation, the information TE provides on SVHC in articles for this part number is based on the latest European Chemicals Agency (ECHA) 'Guidance on requirements for substances in articles' posted at this URL: <https://echa.europa.eu/guidance-documents/guidance-on-reach>

## Compatible Parts

TE Part # 965656-1  
SCHIEBER F16P GEH

## Customers Also Bought



TE Part #6-967630-1  
Timer Connector Housing



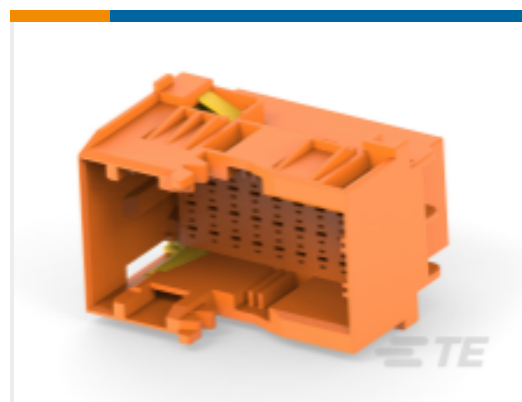
TE Part #1-2112891-1  
AMP MCP Unsealed Connector Housings



TE Part #1-962918-2  
TIMER, RECEPTACLE AND TAB



TE Part #1011-331-0205  
BKSHL, 2P, BLK, PLG, RA, NW 8.5/10



TE Part #1-2112891-6  
36POS,TAB 1.5X0.6,TAB HSG,ASSY



TE Part #338052-4  
FF 250 REC TERMINAL 20-15 AWG TPPB



TE Part #967376-1  
FLA-STE-GEH KPL16P

## Documents

### Product Drawings

[FLA-STE-GEH KPL16P](#)

English

### CAD Files

[3D PDF](#)

3D

Customer View Model

[ENG\\_CVM\\_CVM\\_967376-2\\_C.2d\\_dxf.zip](#)

English

Customer View Model

[ENG\\_CVM\\_CVM\\_967376-2\\_C.3d\\_igs.zip](#)

English

Customer View Model

[ENG\\_CVM\\_CVM\\_967376-2\\_C.3d\\_stp.zip](#)

English

By downloading the CAD file I accept and agree to the [Terms and Conditions](#) of use.

967376-2

Housing for Male Terminals, 16 Position, .137 in / .196 in [5 mm / 3.5 mm] Centerline,  
Gray, Wire & Cable, Cable Mount (Free-Hanging), Key 2

