

DRAWING NUMBER
DM0079

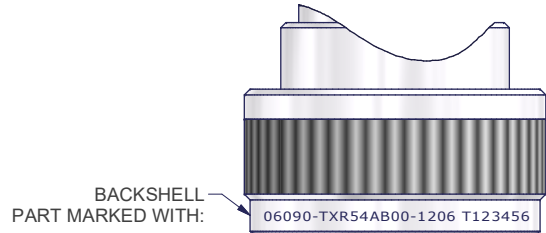
A3

THIRD ANGLE PROJECTION
IF IN DOUBT, ASK

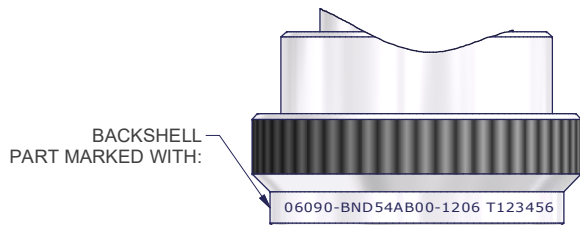
IF IN DOUBT ASK!!!

ACCEPTABLE LOCATIONS AND EXAMPLES:

ORDERED PART NUMBER: TXR54AB00-1206AI



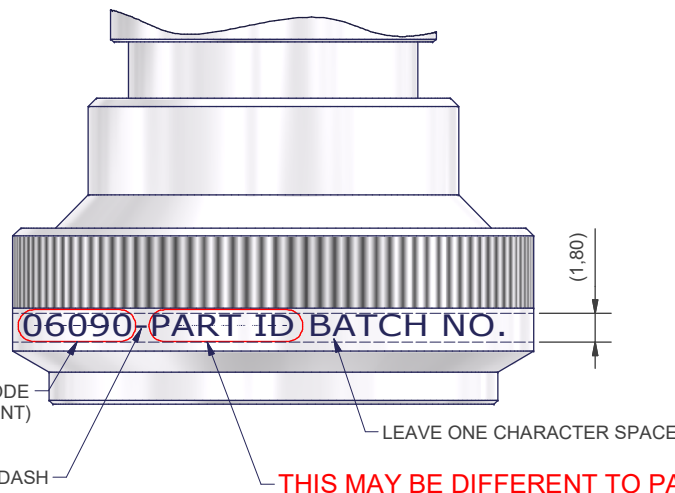
ORDERED PART NUMBER: BNX54AB00-1206



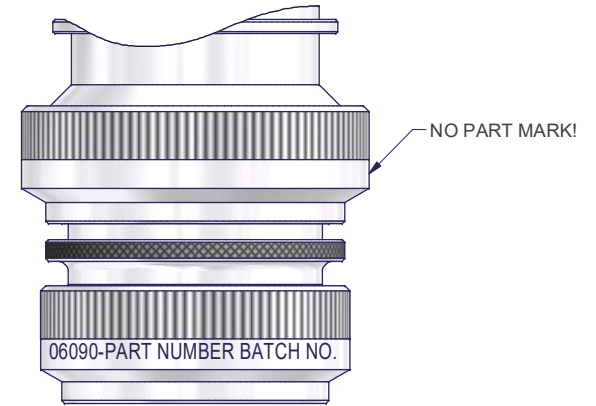
ORDERED PART NUMBER: 209M316-19B



STANDARD FONT PARAMETERS:
FONT TYPE: VERDANA
STANDARD TEXT HEIGHT - 1,8MM
USE 1,4MM ONLY IF NECESSARY
WIDTH / HEIGHT RATIO - 0,5
CHARACTER SPACING - 0,5



IN CASE OF STYLE 2 BACKSHELL ONLY FIRST NUT MUST BE PART MARKED!



**THIS MAY BE DIFFERENT TO PART NUMBER AT THE TOP OF ROUTE CARD !!
- SEE TEXT ON PART MARKING OPERATION**

NOTE:

- STANDARD TINEL PARTS SHALL ALWAYS BE PART MARKED WITH THE PREFIX **TXR** WHETHER A TINEL RING IS ORDERED OR NOT.
- NO REFERENCE TO OPTIONAL BRAID CONFIGURATIONS OR TINEL RING SIZE SHALL BE MADE:
e.g.: -12 FOR 12" BRAID LENGTH OR -AI FOR AN INSULATED 'A' SIZE RING SHALL **NOT** BE MARKED.
- OPTIONS DENOTING PHYSICAL DIFFERENCES TO THE ADAPTOR SHALL BE MARKED.
e.g.: 'D' MODIFICATION, 'J' MODIFICATION OR 'O' RING VARIANTS.
- STANDARD BANDSTRAP PARTS SHALL ALWAYS BE PART MARKED WITH THE PREFIX **BND** WHETHER A BAND IS ORDERED OR NOT.
- STANDARD PNX ADAPTOR SHALL ALWAYS BE PART MARKED WITH THE PREFIX **PNT** WHETHER A RING IS ORDERED OR NOT.

2 / 5	TEMPLATE UPDATE			K.K-W	08/03/18
2 / 4	NOTE 5 ADDED			K.K-W	26/04/16
2 / 3	MS GOTHIC CHANGED TO VERDENA, K.H. REQUEST			K.K-W	12/03/15
2 / 2	REPUBLICATED, DO CHANGES			K.K-W	11/03/15
2 / 1	MS GOTHIC ADDED			K.K-W	11/03/15
2	WIDTH / HEIGHT RATIO UPDATED TO 0,50			K.K-W	09/03/15
1 / 1	FONT SIZE UPDATE			K.K-W	03/03/15
1	INITIAL RELEASE			K.K-W	23/02/15
ISS / REV	DESCRIPTION			CHANGED BY	DATE
2	DCR -	K.K-W	08/03/2018	N/A	N/A
ISS / REV	CHANGE NOTE	DRAWN BY	DATE	MASS (g)	SURFACE AREA (mm ²)

INITIAL PRODUCTION APPROVAL			MATERIAL	ALL DIMENSIONS APPLY BEFORE PLATING
DEPT.	APPROVED	DATE	REFER TO DM0076 AND/OR PURCHASE ORDER	
DESIGN	K.SHEPPARD	16/02/2015	HEAT TREATMENT & FINISH	GENERAL TOLERANCES UNLESS OTHERWISE STATED: 0, = ± 0,40mm 0,0 = ± 0,20mm 0,00 = ± 0,10mm ANGLES ± 1° ALL FILLETS - 0,4 MAX
PROD	JES	23/02/2015		
QUALITY	P.REES	16/02/2015	PACKAGING	ALL DIAMETERS $\varnothing_{0,10}$
DERIVED FROM			SEE ROUTE CARD	REMOVE ALL BURRS AND SHARP EDGES 0.1 MAX. DIMENSIONS IN MILLIMETRES.
			SCALE	3

THIS INFORMATION IS CONFIDENTIAL AND PROPRIETARY TO TYCO ELECTRONICS CORPORATION AND ITS WORLDWIDE SUBSIDIARIES AND AFFILIATES (TE). IT MAY NOT BE DISCLOSED TO ANYONE OTHER THAN TE PERSONNEL WITHOUT AUTHORIZATION FROM TE (www.TE.com).		<p>Polamco WESTON LOCK, LOWER BRISTOL RD, BATH, BA2 1EP TEL. +44 (0)1225 322500</p>
TITLE	TYPE: Production Drawing	
LASER PART MARK DETAIL FOR TE CIRCULAR BACKSHELL		PART NUMBER DM0079

SHT 1