

EKM-2051-3D1-5S/U-FI-E1

Art.-Nr.: E61397-000 (JOR-89677)

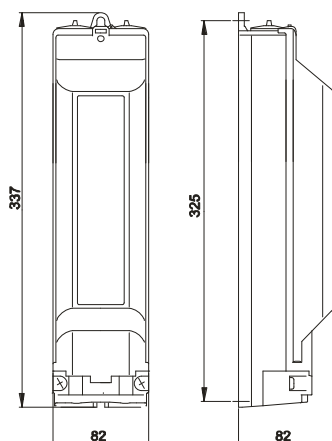
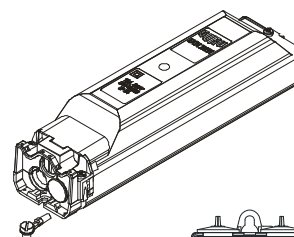
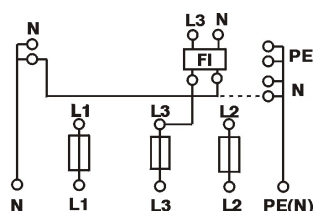
Fuse box for lighting application EKM 2051

according to DIN 43628

explanation SK (for installation in lighting columns)

- protection class II
 - ingress protection IP 54
 - minimum diameter 100 mm
 - door opening minimum 85 x 400 mm
 - l x w x h: 337 x 82 x 82 mm
 - transparent cover with snap lock
 - protection cover
 - compact- terminal block comprising:
 - 3 fuse bases 16 A / D01-E 14,
 - 3 screw caps E 14
 - 5 sliding terminals
 - rail connection (brass rails, nickel-plated)
 - fully insulated PE- and N- output terminals
 - entry terminals for 2 cables to 4 x 25 mm² or 3 cables to 5 x 16 mm²
 - type of mains: N, L1, L3, L2, PE(N)
 - cable break out area (40 mm)
 - 1 mounting rail TS 35 for application of installation devices
 - 1 FI- protective switch 2-pin / 30mA, prewired
 - pre- mounting earthing cable, 10 mm², green / yellow, 400 mm long, with captive screw M 8 x 12
 - 2 pole clamping screws M 6 x 12
 - cable entry: cable clamp for 1 cable to 3 cables Ø 19-22 mm
 - output: 2 cable glands, cable Ø 8-14 mm
- Two additional luminaire cables can be routed towards the bottom of the box.

Circuit diagram:



Cable entry

