



915 Receptacle



flange mount / Flange 21x21

Technical Data

number of pins	9
power	4 (3+PE)
signal	5
temperature range	-20 °C to 130 °C
protection type	when connected IP 66/67

Electrical Data

	power	signal
rated current	max. 14 A*	max. 3.6 A*
rated voltage	630V (AC/DC)	63 V (AC/DC)
rated insulation voltage (L-L)	6000 V	1500 V

mating cycles	500
---------------	-----

Data according to VDE 0110/EN61984, Paragraph 6.19.2.2

pollution degree	3
over voltage category	III
max. height for operation	2000 m

Material

housing	zinc diecast / nickel plated
insulation insert	PBT, PA, UL 94/V0
seals	FKM
contacts	brass / gold plated
contacts	brass / gold plated

Contacts

Item / TCPN:	61.231.11 / 61-0231-011-000
type	Contact Pin \varnothing 1.0 mm
cross section	crimp/ 0.50 - 1.50 mm ²
contact resistance	< 5 mOhm

Item / TCPN:	61.232.11 / 61-0232-011-000
type	Contact Pin \varnothing 1.0 mm
cross section	crimp/ 0.05 - 0.75 mm ²
contact resistance	< 5 mOhm

Tools (not part of product contents)

digital crimping tool for 0,6 mm-/1 mm- contacts
Item / TCPN: C0.235.00 / C0-0235-000-000

analog crimping tool for 1 mm-/2 mm- contacts
Item / TCPN: C0.201.00 / C0-0201-000-000

E EG A 201 MR 01 00 0500 000
E E A 201 M 01 00 0500 000



Contact Arrangement

mating view



Contact Pin \varnothing 1.0 mm
crimp/ 0.50 - 1.50 mm²
Item: 61.231.11
TCPN: 61-0231-011-000



Contact Pin \varnothing 1.0 mm
crimp/ 0.05 - 0.75 mm²
Item: 61.232.11
TCPN: 61-0232-011-000

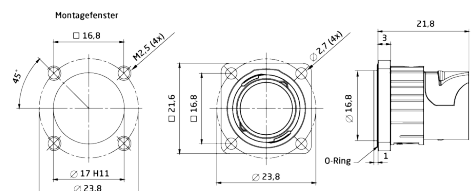


© 2018 TE Connectivity

TE Connectivity, TE connectivity (logo), intercontec (logo) and speedtec are trademarks.

While TE Connectivity (TE) has made every reasonable effort to ensure the accuracy of the information in this presentation, TE does not guarantee that it is error-free, nor does TE make any other representation, warranty or guarantee that the information is accurate, correct, reliable or current. TE reserves the right to make any adjustments to the information contained herein at any time without notice. TE expressly disclaims all implied warranties regarding the information contained herein, including, but not limited to, any implied warranties of merchantability or fitness for a particular purpose. The dimensions in this article are for reference purposes only and are subject to change without notice. Specifications are subject to change without notice. Consult TE for the latest dimensions and design specifications.

TE Connectivity Industrial GmbH
Bernrieder Straße 15
94559 Niederwinkling, Deutschland
Tel.: +49 9962 2002-0
Fax: +49 9962 2002-70
E-Mail: intercontec@te.com
Web: www.intercontec.biz



Main Dimensions

Receptacle

*for max. wire cross-section
pay attention to the
cross-section of used contacts