



intercontec
products

915 Receptacle

itec
12+3-pin

flange mount / Flange 21x21

Technical Data

number of pins 15
temperature range -20 °C to 130 °C
protection type when connected IP 66/67

Electrical Data

power
rated current max. 14 / 5 A*
rated voltage 63V (AC/DC)
rated insulation voltage (L-L) 1500 V

mating cycles 500

Data according to VDE 0110/EN61984, Paragraph 6.19.2.2

pollution degree 3
over voltage category III
max. height for operation 2000 m

Material

housing zinc diecast / nickel plated
insulation insert PBT, PA, UL 94/V0
seals FKM

Contacts (not part of product contents)

Tools (not part of product contents)

E EG A 205 NN 00 00 0001 000
E E A 205 N 00 00 0001 000



Contact Arrangement
mating view

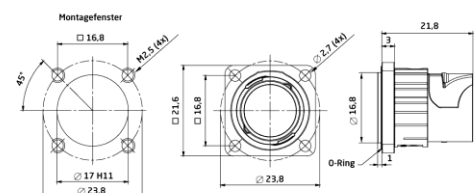


© 2018 TE Connectivity

TE Connectivity, TE connectivity (logo), intercontec (logo) and speedtec are trademarks.

While TE Connectivity (TE) has made every reasonable effort to ensure the accuracy of the information in this presentation, TE does not guarantee that it is error-free, nor does TE make any other representation, warranty or guarantee that the information is accurate, correct, reliable or current. TE reserves the right to make any adjustments to the information contained herein at any time without notice. TE expressly disclaims all implied warranties regarding the information contained herein, including, but not limited to, any implied warranties of merchantability or fitness for a particular purpose. The dimensions in this article are for reference purposes only and are subject to change without notice. Specifications are subject to change without notice. Consult TE for the latest dimensions and design specifications.

TE Connectivity Industrial GmbH
Bernrieder Straße 15
94559 Niederwinkling, Deutschland
Tel.: +49 9962 2002-0
Fax: +49 9962 2002-70
E-Mail: intercontec@te.com
Web: www.intercontec.biz



Main Dimensions
Receptacle

*for max. wire cross-section
pay attention to the
cross-section of used contacts

issue: 03.09.2018