

COPPER TUBULAR TERMINALS AND SLEEVES XCT, XCT.C, XCT.EQ, XG7T TYPES

KEY FEATURES

- A full range for cross sections conductors from 1,5 mm² to 630 mm²
- Inspection hole on the barrel of the terminals allows for quick control when the conductor is well positioned
- Crimping by hexagonal compression or indent
- Can be crimped with a variety of tools

TE Connectivity's (TE) XCT tubular terminals and XG7T sleeves are ideally suited to connect electrical copper conductors to equipment's terminals or to another conductor.

XCT tubular terminals and XG7T sleeves are made of highly conductive electrolytic copper with a bright tin finish. It offers outstanding resistance to oxidation and corrosion, and allows for quick identification, easy installation and checking.

Designs include ring tongue terminals, right angle, compact narrow tongue terminals, and sleeves.

These terminals comply with NF C 20 130 French standard. While using the terminals with flexible conductors, it is necessary to use a section that is just above or the next largest section. For example: for a flexible conductor at 35 mm², use the lug with marking at 50 mm².

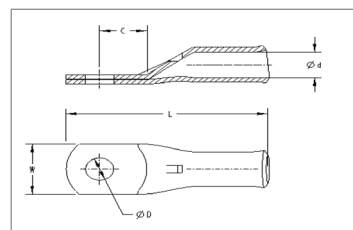
Customers can count on consistent, high quality products, driven by TE's proven innovation and backed by our extraordinary customer support.

Copper Tubular Terminals XCT Type



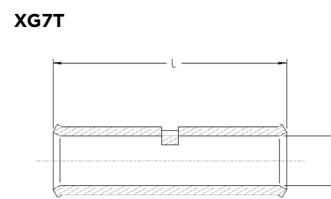
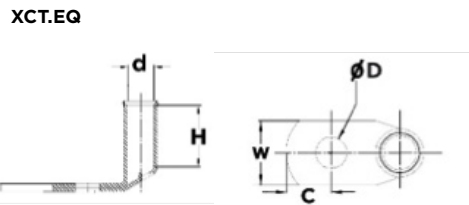
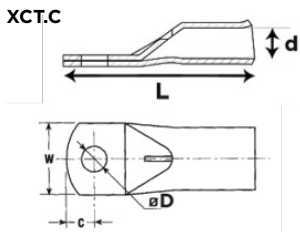
PRODUCT SELECTION INFORMATION

Description	Dimensions					Weight (g)	Standard Pack	Part Number
	XCT Tongue Terminals	ØD	W	Ød	C			
XCT 1,5-3	3.2	6	1.8	3.25	17	0.7	100	710971-1
XCT 1,5-4	4.3	6.5	1.8	4	17	0.9	100	710972-1
XCT 1,5-5*	5.3	7.5	1.8	4.75	18	0.9	100	710973-1
XCT 1,5-6*	6.4	9	1.8	6.5	19	1	100	711674-1
XCT 2,5-4	4.3	8	2.2	4.5	18	1.3	100	710974-1
XCT 2,5-5	5.3	8.5	2.2	5	19	1.3	100	710975-1
XCT 2,5-6*	6.4	9	2.2	6.5	20	1.5	100	710976-1
XCT 4-4	4.3	9	2.7	4.75	21	2.4	100	710977-1
XCT 4-5	5.3	9	2.7	4.75	24	2.6	50	710978-1
XCT 4-6	6.4	12	2.7	6.5	25	2.7	50	710979-1
XCT 6-4	4.2	10	3.3	7	31	4.3	100	710032-1
XCT 6-5	5.2	10	3.3	7	31	4.3	100	710032-2
XCT 6-6	6.4	13	3.3	7	31	4.4	100	710032-4
XCT 6-8	8.3	13	3.3	9	35	4.5	100	710032-6
XCT 10-4*	4.2	11	4.2	7	33	6	100	710031-1
XCT 10-5	5.2	11	4.2	7	33	6.5	100	710031-2
XCT 10-6	6.4	11	4.2	7	33	6.5	100	710031-4
XCT 10-8	8.3	14	4.2	10	38	7.4	100	710031-6
XCT 10-10	10.3	14	4.2	10	38	7.5	100	710031-8
XCT 16-5	5.2	12	5.3	7	33.5	8.6	100	710030-1
XCT 16-6	6.4	12	5.3	7	33.5	8.7	100	710030-3
XCT 16-8	8.3	16	5.3	9	39	9.2	100	710030-5
XCT 16-10	10.3	16	5.3	11	43	9.9	100	710030-7
XCT 16-12*	12.8	16	5.3	11	43	9.4	100	710030-8
XCT 25-5*	5.2	13	6.6	7	35	10.8	100	710026-1
XCT 25-6	6.4	13	6.6	7	35	11	100	710026-3
XCT 25-8	8.3	16	6.6	9	40	11.7	100	710026-5
XCT 25-10	10.3	16	6.6	11	44	11.6	100	710026-7
XCT 25-12*	12.2	16	6.6	11	44	12	100	710026-8
XCT 35-6	6.4	15	7.9	7	39	14	50	710027-1
XCT 35-8	8.3	17	7.9	11	46	15	50	710027-2
XCT 35-10	10.3	17	7.9	11	46	17.1	50	710036-3
XCT 35-12*	12.8	17	7.9	11	46	15.4	50	710036-4
XCT 50-6*	6.4	18	9.2	13.5	53	20	25	710025-3
XCT 50-8	8.3	18	9.2	13.5	53	26	25	710025-2
XCT 50-10	10.3	18	9.2	13.5	53	30	25	710025-5
XCT 50-12	12.8	19	9.2	13.5	53	23	25	710025-7
XCT 60-8*	8.3	19	10.5	11.3	52.5	21.8	25	709817-1
XCT 60-10	10.3	19	10.5	11.3	52.5	20.2	25	709817-2
XCT 60-12	12.8	19	10.5	13.8	52.5	20	25	709817-3
XCT 70-8	8.3	21	11	13.5	58	39.6	25	710028-1
XCT 70-10	10.3	21	11	13.5	58	37.4	25	710028-3
XCT 70-12	12.8	21	11	13.5	58	37.6	25	710028-5
XCT 70-14	14.5	21	11	16.5	60.5	37	25	710028-6
XCT 70-16*	16.5	21	11	16.5	60.5	36.2	25	710028-8
XCT 95-8	8.3	23	13.1	16.3	70	58.8	25	709819-1
XCT 95-10	10.3	23	13.1	16.3	70	57.2	25	709819-3
XCT 95-12	12.8	23	13.1	16.3	70	56	25	709819-5
XCT 95-14	14.5	23	13.1	16.3	70	54.8	25	709819-7
XCT 95-16	16.5	23	13.1	16.3	70	52.9	25	709819-8
XCT 120-10	10.3	28	14.5	16.3	76	81.2	25	709820-1
XCT 120-12	12.8	28	14.5	16.3	76	78.8	25	709820-3
XCT 120-14	14.5	28	14.5	16.3	76	77.2	25	709820-4
XCT 120-16	16.5	28	14.5	16.3	76	75.8	25	709820-6
XCT 150-10	10.3	30	16.2	16.3	81.5	103.5	10	709821-2
XCT 150-12	12.8	30	16.2	16.3	81.5	100.5	10	709821-3
XCT 150-14	14.5	30	16.2	16.3	81.5	98.5	10	709821-4
XCT 150-16	16.5	30	16.2	16.3	81.5	96.5	10	709821-5
XCT 185-12	12.8	33	18	16.3	88	124.5	10	709822-2
XCT 185-14	14.5	33	18	16.3	88	123	10	709822-3
XCT 185-16	16.5	33	18	16.3	88	120	10	709822-4
XCT 240-10	10.3	37	20.6	19.9	98.5	165	10	1709823-1
XCT 240-12	12.8	37	20.6	19.3	98.5	170	10	1709523-1
XCT 240-14	14.5	37	20.6	19.3	98.5	173.5	10	709823-3
XCT 240-16	16.5	37	20.6	19.3	98.5	172	10	709823-4
XCT 240-20	21	37	20.6	19.3	98.5	159	10	709823-5
XCT 300-14	14.5	41	23.1	21	102.5	175	10	709818-1
XCT 300-16	16.5	41	23.1	21	102.5	173	10	709818-3
XCT 300-20	21	41	23.1	21	102.5	167	10	709818-4
XCT 400-16	16.5	47	26	22	120	280	3	709887-1
XDT 500 60x56 NP*	-	55	29.2	-	145	736	1	708370-1
XDT 630 60x61 NP*	-	60	33.2	-	150	730	1	708371-1



(*) Palm sizes do not comply with NFC 20-130
 (**) Terminal does not comply with NFC 20-130
 NP: without hole - Hole to be done on request

Copper Tubular Terminals and Sleeves



PRODUCT SELECTION INFORMATION

Description	Capacity (mm ²)	Dimensions					Stud (mm)	Weight (g)	Standard Pack	Part Number
XCT.C Compact narrow tongue terminals										
		ØD	W	Ød	C	-L				
XCT.C 120-10	120	10.3	24.5	14.3	11.5	63	10	64	25	708461-1
XCT.C 150-10	150	10.3	24.5	16	11.5	64.5	10	80	10	708462-1
XCT.C 185-10	185	10.3	24.5	17.8	11.5	72.5	10	98	10	708463-1
XCT.C 240-10	240	10.3	31	20.4	11.5	74	10	123	10	708464-1
XCT.C 300-10	300	10.3	31	22.9	11.5	83	10	138	10	708465-1
XCT.EQ right angle terminals										
		ØD	W	Ød	C	H				
XCT 6-6 EQ	6	6.5	13	3.3	7.5	14.4	6	3	100	708470-1
XCT 10-6 EQ	10	6.5	11	4.2	6.5	12.2	6	5	100	708471-1
XCT 10-8 EQ	10	8.5	14	4.2	10	12.2	8	6	100	708471-2
XCT 16-6 EQ	16	6.5	12	5.3	6.25	13	6	7	100	708472-1
XCT 16-8 EQ	16	8.5	16	5.3	9	12.8	8	8	100	708472-2
XCT 25-6 EQ	25	6.5	13	6.6	6.25	13.5	6	11.7	100	708412-1
XCT 25-8 EQ	25	8.5	16	6.6	10	13.5	8	13.2	100	708412-2
XCT 35-6 EQ	35	6.5	15	7.9	7.5	14	6	16.3	50	708473-1
XCT 35-8 EQ	35	8.5	17	7.9	10	14.5	8	14	50	708473-2
XCT 35-10 EQ	35	10.5	17	7.9	12	22	10	19	50	708473-3
XCT 50-6 EQ	50	6.5	17	9.2	6.25	28	6	22	50	708474-1
XCT 50-8 EQ	50	8.5	18	9.2	10	18.3	8	28.8	25	708474-2
XCT 50-10 EQ	50	10.5	18	9.2	12	18.5	10	24.2	25	708474-3
XCT 70-10 EQ	70	10.5	21	11	12	19.5	10	39.8	25	708476-1
XCT 70-12 EQ	70	13	21	11	13	19.5	12	39	25	708476-2
XCT 95-10 EQ	95	10.5	23	13.1	12	35	10	49	25	708477-1
XCT 95-12 EQ	95	13	23	13.1	13	35	12	40	25	708477-2
XCT 120-10 EQ	120	10.5	28	14.5	12	38	10	66	25	708478-1
XCT 150-12 EQ	150	13	28	16.2	15	40	12	90	10	708479-1
XG7T copper tubular sleeves										
		ØD	W	Ød	C	L				
XG7T 1,5	1.5	-	-	1.8	-	15	-	1.2	100	0710982-1
XG7T 2,5	2.5	-	-	2.2	-	18	-	1.3	100	0710983-1
XG7T 4	4	-	-	2.7	-	22	-	3.1	100	0710984-1
XG7T 6	6	-	-	3.3	-	31	-	4	50	0709834-1
XG7T 10	10	-	-	4.2	-	39	-	4	50	0709835-1
XG7T 16	16	-	-	5.3	-	39	-	10.3	50	0709836-1
XG7T 25	25	-	-	6.6	-	39	-	12.8	50	0709837-2
XG7T 35	35	-	-	7.9	-	39	-	16.9	50	0709838-1
XG7T 50	50	-	-	9.2	-	50	-	26.2	25	0709839-1
XG7T 60	60	-	-	10.5	-	47	-	17	25	0709840-1
XG7T 70	70	-	-	11	-	52	-	39	25	0709841-1
XG7T 95	95	-	-	13.1	-	65	-	56.4	25	0709842-1
XG7T 120	120	-	-	14.5	-	71	-	78	10	0709843-1
XG7T 150	150	-	-	16.2	-	78	-	101.5	10	0709844-1
XG7T 185	185	-	-	18	-	86	-	125	10	0709845-1
XG7T 240	240	-	-	20.6	-	94	-	166	10	0709846-1
XG7T 300	300	-	-	23.1	-	102	-	180.2	5	0-0709847-1
XG7T 400	400	-	-	26	-	102	-	206.2	5	

Learn more: [TE.com/energy](https://www.te.com/energy)

©2023 TE Connectivity Ltd. family of companies. All Rights Reserved. EPP-2380-DDS-6/23

TE, TE Connectivity, TE connectivity (logo), EVERY CONNECTION COUNTS are trademarks owned or licensed by TE Connectivity. Other logos, product and company names mentioned herein may be trademarks of their respective owners. While TE has made every reasonable effort to ensure the accuracy of the information in this brochure, TE does not guarantee that it is error-free, nor does TE make any other representation, warranty or guarantee that the information is accurate, correct, reliable or current. TE reserves the right to make any adjustments to the information contained herein at any time without notice. TE Connectivity's obligations shall only be as set forth in TE Connectivity's Standard Terms and Conditions of Sale for this product and in no case will TE Connectivity be liable for any incidental, indirect or consequential damages arising out of the sale, resale, use or misuse of the product. TE expressly disclaims all implied warranties regarding the information contained herein, including, but not limited to, any implied warranties of merchantability or fitness for a particular purpose. The dimensions, specifications, and/or information contained herein are for reference purposes only and are subject to change without notice. Consult TE for the latest dimensions, specifications, and/or information. Users of TE Connectivity products should make their own evaluation to determine the suitability of each such product for the specific application.

Connect with us:

[TE.com/energy-contact](https://www.te.com/energy-contact)