

## UTILUX ALUMINIUM ROTATING LUGS & LINKS AGS4HR & AKS4HR TYPE

### KEY FEATURES

- The connector can be rotated to any desired position
- No need to twist conductor to correct orientation
- Minimum effort required to correctly orientate connector
- Suits solid and stranded conductor types
- No need to round the sector cable first
- No voids when crimped
- Takes two crimps on the barrel without overlapping
- Palm will fit into most receptacles found in URD system

Utilux is a brand that has built an enviable reputation for high quality, reliable electrical connectors. For over 90 years, this dynamic Australian brand has been a leader in the field of interconnection systems.

Our aim is to provide the best possible products and services to keep our customers at the cutting edge of industry standards - internationally.

You can be sure that Utilux branded products are fabricated from the finest materials and produced to exacting tolerances. They represent the latest technology and the best design for the tasks they are required to perform.

Utilux is a leading brand of electrical connectors sold to original equipment manufacturers and electrical distribution companies throughout Australia, New Zealand and Asia. A comprehensive range, the most up to date production technology and the highest quality control standards ensure that there are Utilux connectors, of optimum reliability and durability, for all major power distribution applications.

As part of the worlds largest electrical connector company, TE Connectivity, the development of products is an ongoing commitment. It is done on a global basis, utilising the talents of many people throughout the organisation to ensure a global product for a local market.

**Customers can count on consistent, high quality products, driven by TE's proven innovation and backed by our extraordinary customer support.**

## UTILUX ALUMINIUM ROTATING LUGS AND LINKS

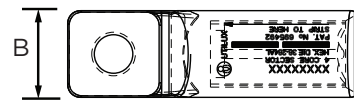
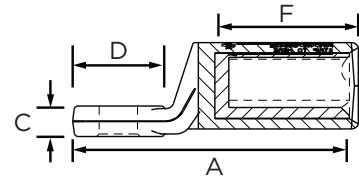


This range of connectors for aluminium 4 core sector cable features a unique concept enabling the lug to be rotated to any desired position on the conductor, without the need to round the conductor first. The Design embodies the tried and proven round barrel/hex compression die combination, giving superior connection reliability.

### LUG PRODUCT SELECTION INFORMATION

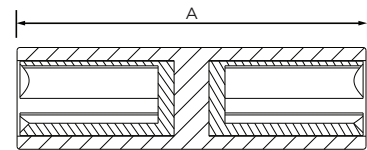
Catalogue Number	Conductor Area (mm <sup>2</sup> )	Stud Size	Dimensions (mm)					Crimping Die
			A	B	C	D	F	
AGS4HR240MB	240	MB	112.5	34	12	36	56.5	38-284AL
AGS4HR240M12	240	M12	112.5	34	12	36	56.5	38-284AL
AGS4HR240M16	240	M16	112.5	34	12	36	56.5	38-284AL

Stud size "MB" means blank palm.

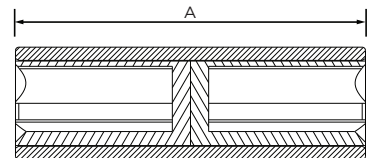


### LINK PRODUCT SELECTION INFORMATION

Catalogue Number	Conductor Area (mm <sup>2</sup> )	Dimensions (mm)	Crimping Die
		A	
AKS4HR240	240	120	38-284AL
AKS4HR240X01	240	106	38-284AL



AKS4HR240



AKS4HR240X01

[te.com/energy](http://te.com/energy)

©2016 TE Connectivity Ltd. family of companies. All Rights Reserved. EPP-2487-DDS22-AU-2/16

Utilux, TE Connectivity and TE Connectivity (logo) are trademarks. Other logos, product and/or company names might be trademarks of their respective owners. While TE has made every reasonable effort to ensure the accuracy of the information in this brochure, TE does not guarantee that it is error-free, nor does TE make any other representation, warranty or guarantee that the information is accurate, correct, reliable or current. TE expressly disclaims all implied warranties regarding the information contained herein, including, but not limited to, any implied warranties of merchantability or fitness for a particular purpose. The dimensions in this catalog are for reference purposes only and are subject to change without notice. Specifications are subject to change without notice. Consult TE for the latest dimensions and design specifications.

### FOR MORE INFORMATION:

#### TE Customer Support Centers

NSW/QLD/NT/ACT:	+61 (2) 9554 2695
VIC/TAS/SA:	+61 (3) 9271 5243
WA:	+61 (8) 9358 7806
New Zealand:	+64 (9) 634 4580