

HIGH VOLTAGE (HV) OUTDOOR TERMINATION OHVT-123C (4A)

UP TO 123 kV

KEY FEATURES

- Pressure-tight and light weight composite housing
- Prefabricated and factory tested silicone rubber stress cone
- No special tools required to install the termination
- Silicone oil filling without preheating
- Isolated base plate for sectionalization
- Fittings made of corrosion-resistant alloy
- Type tested according to IEC 60840 and IEC 62067 standards

TE Connectivity's (TE) Raychem High Voltage Outdoor Termination series (OHVT) is designed for voltages up to 245 kV and can operate under severe environmental conditions. The OHVT is engineered for compatibility with polymeric insulated cables independent of the manufacturer and grounding can be easily adapted to various cable constructions.

Composite housing with different creepage lengths are available and covers all pollution levels, from common to the most extreme. The installation of the termination can be done by a trained installer equipped with conventional tools. The termination is designed and tested according to the following standards: IEC-60840, IEC-62067, IEC-60815, IEEE-48. The pressure-tight composite housing is made of a glass fiber reinforced (GFR) resin tube with silicone rubber sheds molded to the tube. The metal fitting associated with the termination consists of a corrosion-free alloy. The cable lug is available both in crimp and shear-off bolt version. It is suitable for all common conductors made of aluminum or copper. The insulator fills from the top with silicone oil, which does not require prior heating. The flexible double sealing system at the lug is installer-friendly and ensures protection against environmental influences. A heat-shrinkable polymeric tube containing oil-resistant sealant encapsulates the connector barrel and the polymeric insulation transition.

Customers can count on consistent, high quality products, driven by TE's proven innovation and backed by our extraordinary customer support.

HV Outdoor Terminations OHVT-123C (4A)



MECHANICAL DATA

| | |
|---|---------------------|
| Length without connection bolt | 1759 mm |
| Outer diameter of insulator | 304 mm |
| Inner diameter of insulator | 198 mm |
| Cantilever force | 3600 N |
| Max. permissible radial pull at connection bolt | 2000 N |
| Diameter of connection bolt | 30/40/50 mm |
| Length of connection bolt | 100/130 mm |
| Earth connection | 4 x M12 |
| Weight approx. | 100 kg |
| Silicone-Oil volume approx. | 32 l |
| Packing information | 1620 x 780 x 960 mm |

DESIGN DATA

| | |
|---|---|
| Diameter over insulation | 34 - 97 mm |
| Diameter over sheath | 110 mm |
| Max. Cross section (Cu / Al) | Approx. 2500 mm ² |
| Creepage distance | 3976 mm |
| Protected creepage distance [90°C shadow] | 1540 mm |
| Flashover distance | 1138 mm |
| Material of connection bolt | Aluminium / Copper |
| Material of insulator - outer surface | Silicone rubber |
| Profile of insulator | Alternating sheds |
| Colour of insulator | Grey |
| Method of stress control | Geometric |
| Stress cone | Pre-fabricated silicone rubber |
| Max. permissible dielectric stress | 4 kV/mm (at insulation screen of cable) |
| Insulating liquid | Silicone oil |
| Material of fittings | Aluminium |
| Clearance between terminations | As per IEC 60071-1 |
| Installation temperature | 0°C - +40°C |
| Operation temperature | -55°C - +55°C |
| Storage temperature | 0°C - +40°C |

ELECTRICAL TYPE TEST IEC 60840

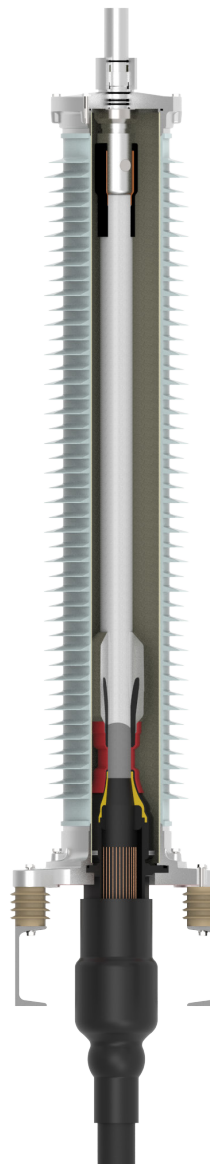
| | |
|--|--------|
| Heating cycle voltage | 128 kV |
| Partial discharge at ambient and elevated temperatures | 96 kV |
| Lightning impulse voltage 1.2µs/50µs | 550 kV |

ELECTRICAL TYPE TEST IEC 60840 ANNEX H

| | |
|---|---------|
| AC withstand test screen to ground | 25 kV |
| DC withstand test screen to ground | 25 kV |
| Lightning impulse test screen to ground | 37.5 kV |

ELECTRICAL ROUTINE TEST IEC 60840

| | |
|------------------------|--------|
| AC withstand voltage | 160 kV |
| Partial discharge test | 96 kV |



FOR MORE INFORMATION: TE Technical Support Centers

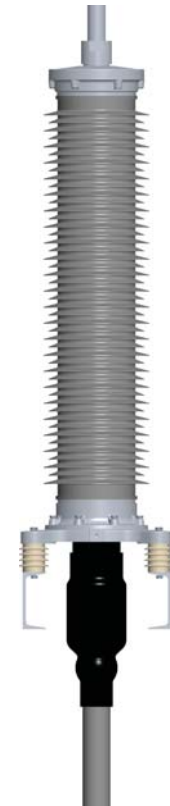
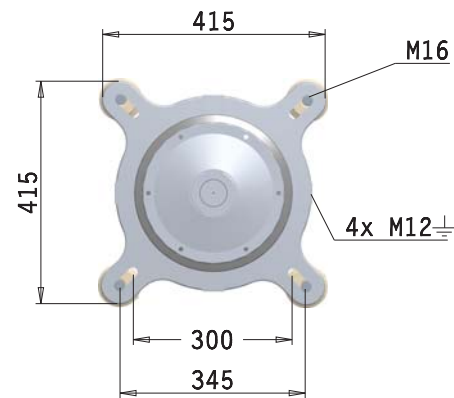
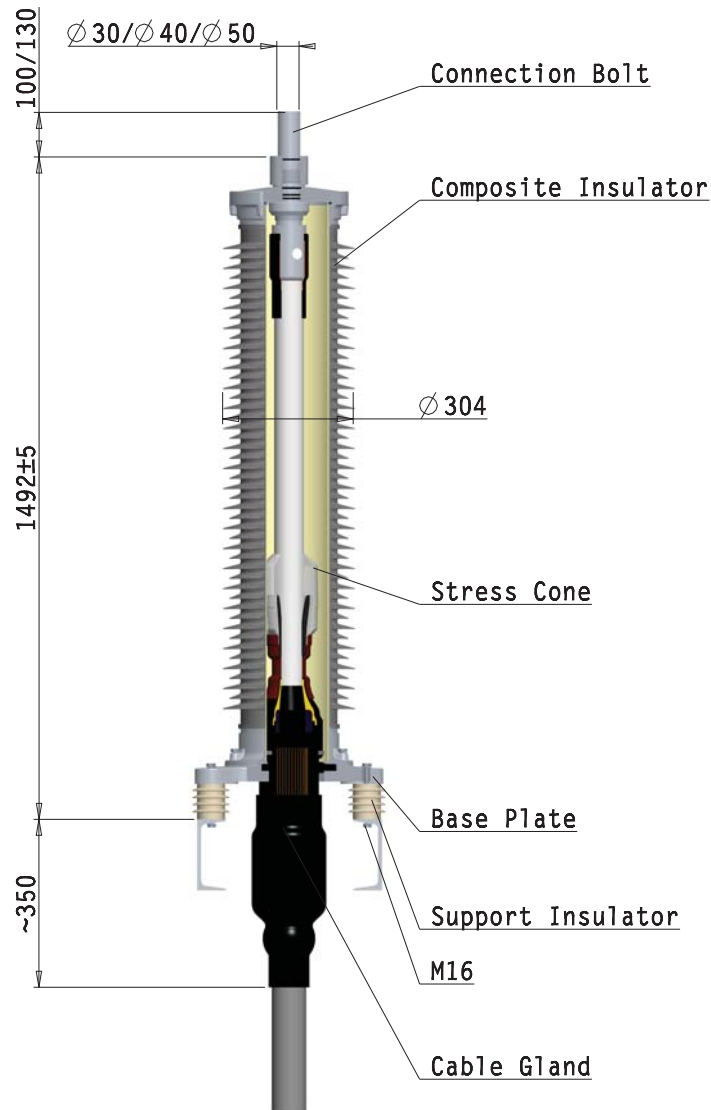
| | |
|-------------------|----------------------|
| USA: | +1 800 327 6996 |
| Canada: | +1 (905) 475-6222 |
| Mexico: | +52 (0) 55-1106-0800 |
| Latin/S. America: | +54 (0) 11-4733-2200 |
| France: | +33 380 583 200 |
| UK: | +44 0870 870 7500 |
| Germany: | +49 896 089 903 |
| Spain: | +34 916 630 400 |
| Italy: | +39 333 250 0915 |
| Benelux: | +32 16 508 695 |
| Russia: | +7 495-790 790 2-200 |
| China: | +86 (0) 400-820-6015 |

te.com/energy

© 2019 TE Connectivity. All Rights Reserved. EPP-EPP-3428-DDS-10/19-OHVT-123C-4A-TE.

Raychem, TE Connectivity and TE connectivity (logo) are trademarks. Other logos, product and/or company names might be trademarks of their respective owners. While TE has made every reasonable effort to ensure the accuracy of the information in this brochure, TE does not guarantee that it is error-free, nor does TE make any other representation, warranty or guarantee that the information is accurate, correct, reliable or current. TE expressly disclaims all implied warranties regarding the information contained herein, including, but not limited to, any implied warranties of merchantability or fitness for a particular purpose. The dimensions in this catalog are for reference purposes only and are subject to change without notice. Specifications are subject to change without notice. Consult TE for the latest dimensions and design specifications.

While TE Connectivity (TE) has made every reasonable effort to ensure the accuracy of the information in this catalog, TE does not guarantee that it is error free, nor does TE make any other representation, warranty or guarantee that information is accurate, correct, reliable or current. TE reserves the right to make any adjustments to the information contained herein at any time without notice. If express disclaimers, all implied warranties regarding the information contained herein, including, but not limited to, any implied warranties or merchantability or fitness for a particular purpose. The dimensions in this catalog are for reference purpose only and are subject to change without notice. Consult TE for the latest dimensions and design specifications.



OUTDOOR-TERMINATION
123 kV
COMPOSITE-INSULATOR
FOR XLPE-CABLE

OHVT-123C (-4A)
Offer drawing

TE
connectivity

Raychem High Voltage Cable Accessories

TE Connectivity drawing no: EPD-204-2249-00 REV. 1