

# SOLARLOK PV4-S DC CRIMP CONNECTORS

FOR 1500 V PV INSTALLATIONS



**IP68 RATED FOR RELIABLE WATERPROOF  
CONNECTIONS (1 M / 24 HOURS)**

## KEY FEATURES

- **Low contact resistance ( $\leq 0.3\text{m}\Omega$ ) for minimized power losses**
- **Equipped with the Standard Solar Interface (SSI)**
- **Compliant with NEC 2008/2011 tool required for de-coupling**

TE Connectivity's SOLARLOK DC crimp connectors PV4-S are designed for solar installations with extended voltage ratings of 1500 V IEC (TUV) and 1500 V (UL). They are traditional connectors equipped with the Standard Solar Interface. They are suitable for application on junction boxes, directly at the panel, as well as on harnesses and jumpers for both machine and field installation.

TE's PV4-S connectors can withstand high UV exposure and are rated IP68 for extreme climatic conditions. They are easy to install with standard installation tools and are compliant with NEC 2008/2011 for de-coupling.

The PV4-S connectors are range-taking and can cover outer cable diameters from 5.0 mm (0.19 inch) IEC / 5.5 mm (0.21 inch) UL to 7.8 mm (0.30 inch).

## APPLICATIONS

- Solar PV Panels
- Solar String Inverters
- Solar Harness and Jumpers

## RELEVANT STANDARDS AND TEST REPORTS

- IEC 62852
- UL 6703

## TECHNICAL SPECIFICATIONS

Description		Wire size		Part Numbers	Contact package	PPQ
		mm <sup>2</sup>	AWG			
PV4-S Cable Connector	Male (Pin) Connector Kit	4 - 6	12 / 10	3-2270024-1	Reel Contact (Pin)	2000
		4 - 6	12 / 10	3-2270024-3	Loose Contact (Pin)	1000
	Male Empty Housing	No Contact		2270022-3	No Contact	1000
	Female (Socket) Connector Kit	4 - 6	12 / 10	3-2270025-1	Reel Contact (Socket)	2000
		4 - 6	12 / 10	3-2270025-3	Loose Contact (Socket)	1000
Female Empty Housing	No Contact		2270023-3	No Contact	1000	
PV4-S & PM Contacts	Male (Pin) Contact Loose Piece	2.5	14	2368158-3	Loose Contact (Pin)	1000
		4 - 6	12 / 10	2363118-3	Loose Contact (Pin)	1000
	Male (Pin) Contact Reel Contact	2.5	14	2368158-2	Reel Contact (Pin)	6000
		4 - 6	12 / 10	2363118-2	Reel Contact (Pin)	6000
	Female (Socket) Contact Loose Piece	2.5	14	2368157-3	Loose Contact (Socket)	1000
		4 - 6	12 / 10	2363117-3	Loose Contact (Socket)	1000
	Female (Socket) Contact Reel Contact	2.5	14	2368157-2	Reel Contact (Pin)	6000
		4 - 6	12 / 10	2363117-2	Reel Contact (Pin)	6000

## ACCESSORIES



PLASTIC TOOL FOR DISCONNECT PV4  
1971903-1



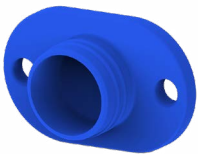
PLASTIC TOOL FOR DISCONNECT PV4 & PM STYLE  
2232232-1



HAND CRIMPING TOOL  
4.0 mm<sup>2</sup> - 6.0 mm<sup>2</sup>  
6-1579014-8



STRIPPING TOOL SOLARLOK  
4-1579002-2



DUST CAP FOR MALE HOUSING  
2232228-1



DUST CAP FOR FEMALE HOUSING  
2232227-1



SAFE-TE MALE  
2396108-1



SAFE-TE FEMALE  
2396109-1

Learn more: [TE.com/energy](https://www.te-connectivity.com/energy)

© 2024 TE Connectivity. All Rights Reserved. EPP-3688-DDS-08/24

TE, TE Connectivity, TE connectivity (logo), SOLARLOK and EVERY CONNECTION COUNTS, are trademarks owned or licensed by TE Connectivity. Other logos, product and company names mentioned herein may be trademarks of their respective owners. While TE has made every reasonable effort to ensure the accuracy of the information in this brochure, TE does not guarantee that it is error-free, nor does TE make any other representation, warranty or guarantee that the information is accurate, correct, reliable or current. TE reserves the right to make any adjustments to the information contained herein at any time without notice. TE Connectivity's obligations shall only be as set forth in TE Connectivity's Standard Terms and Conditions of Sale for this product and in no case will TE Connectivity be liable for any incidental, indirect or consequential damages arising out of the sale, resale, use or misuse of the product. TE expressly disclaims all implied warranties regarding the information contained herein, including, but not limited to, any implied warranties of merchantability or fitness for a particular purpose. The dimensions, specifications, and/or information contained herein are for reference purposes only and are subject to change without notice. Consult TE for the latest dimensions, specifications, and/or information. Users of TE Connectivity products should make their own evaluation to determine the suitability of each such product for the specific application.

Connect with us:

[TE.com/energy-contact](https://www.te-connectivity.com/energy-contact)