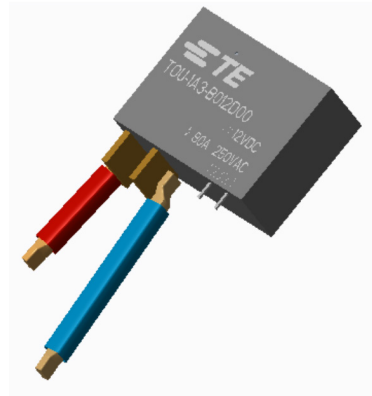


Power Latching Relay TOU

- 1 pole 80A, 1 form A (NO) contact
- Contact gap > 1.2mm
- 1 or 2 coil version available
- High initial dielectric strength
 - between open contacts 2000V
 - between contact and coil 4000V
- In accordance to IEC 62055-31 UC2



Typical applications
Electricity meters, Overvoltage or undervoltage protective device.

Approvals	
UL CQC in process	

Contact Data	
Contact arrangement	1 form A (NO)
Rated voltage	250VAC
Max. switching voltage	250VAC
Rated current	80A
Breaking capacity max.	20KVA
Contact material	AgSnO
Frequency of operation with/without load	360/1080h ⁻¹
Operate/release time max., DC coil	20ms/20ms

Contact ratings	
Load	Cycles
80A, 250VAC (IEC 62055-31 UC2)	1x10 ⁴

Mechanical endurance	>1x10 ⁵
----------------------	--------------------

Coil Data	
Magnetic system	Polarized, bi-stable (latching)
Coil voltage range	6 to 24VDC
Coil insulation system according UL	Class F

Coil versions, bistable, DC coil					
Coil code	Rated voltage VDC	Set voltage VDC	Reset voltage VDC	Coil resistance Ω±10%	Rated coil power W
Bistable 1 coil					
B006	6	70% of rated	70% of rated	24	1.5
B009	9	70% of rated	70% of rated	54	1.5
B012	12	70% of rated	70% of rated	96	1.5
B024	24	or less	or less	384	1.5
Bistable 2 coil					
C006	6	70% of rated	70% of rated	12/12	3
C009	9	70% of rated	70% of rated	27/27	3
C012	12	70% of rated	70% of rated	48/48	3
C024	24	or less	or less	192/192	3

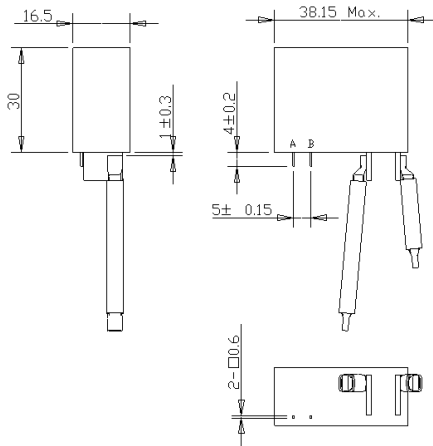
All figures are given for coil without pre-energization, at ambient temperature +23°C. Other coil voltages on request.

Insulation Data	
Initial dielectric strength	
between open contacts	2,000V _{rms}
between contact and coil	4,000V _{rms}
Initial surge withstand voltage	
between contact and coil	12000V (1.2/50μs)
Initial insulation resistance	
between insulated elements	1000MΩ min.at 500VDC
Clearance/creepage	
between contact and coil	≥8/8mm
Material group of insulation parts	IIIa

Other Data	
Material compliance: Eu RoHS/ELV, China RoHS, REACH, Halogen content refer to the Product Compliance Support Center at www.te.com/customer-support/rohssupportcenter	
Ambient temperature	-40 to 85°C
Category of environmental protection	
IEC 61810	RT1 - dust protected
Vibration resistance (functional)	10 to 55Hz 1.5mm
Shock resistance (functional)	10g
Terminal type	Quick connect. (customized version available)
Weight	50g

Power Latching Relay TOU (Continued)

Dimensions



Coil polarity:
set: A + & B -
reset: A - & B +

General tolerance: ± 0.3

Product code structure

	Series			-	Contact			-	Coil		Enclosure, Terminals			,	Variant
	TOU	8	0		1	A	3		C	012	D	0	2		
1. Type (Product family)															
2. Version - Current class / Model	8 80A														
3. Version - Orientation and PerformanceClass	0 vertical (Bottom-right), standard performance 1 horizontal (Bottom-right), standard performance														
4. Number of Contact Poles	1 1 pole														
5. Contact configuration	A form A (NO Contact)														
6. Contact material	3 AgSnO														
7. Coil version	B bistable 1 coil C bistable 2 coils														
8. Coil voltage	006 6V 009 9V 012 12V 024 24V 048 48V nnn coil voltage; e.g. 012 (12V) for standard coil														
9. Category of Protection	D RTI (dust proof)														
10. Mechanical feature	0 Standard														
11. Terminals	0 angled contact terminals 1 angled contact terminals with hole 2 straight contact terminals 3 straight contact terminals with hole 4 pcb terminals X customization terminals structure														
12. Variant	99999 optional 5 digit identifier for customised variant - reverse coil polarity - Shunt (if any, value) - customized wires, busbars, etc.														