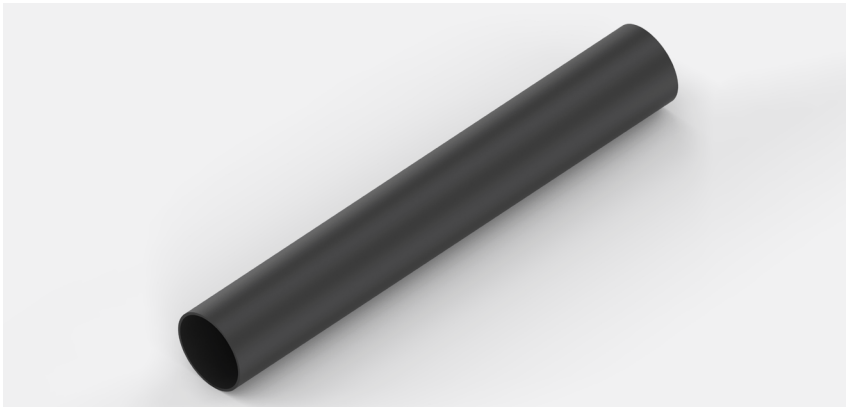


# ATUM



## HIGH SHRINK RATIO ADHESIVE LINED POLYOLEFIN TUBING.

### PRODUCT BENEFITS

- Easier, lower cost installation compared to dip-coat processes – simply slide over substrate and shrink using hot air, convection or infrared equipment.
- Reduced production times – tubes can be bent or formed on the pipe.
- Moisture proof sealing – hot-melt adhesive flows between tubing and substrate to provide a permanent waterproof bond.
- Application versatility – one size of tubing fits a range of substrate diameters minimizing inventory costs.
- RoHS/ELV compliant

Semi-flexible, heat-shrinkable tubing with a meltable adhesive inner lining designed to provide moisture proof sealing to a wide range of substrates such as electrical wire splices, cable jackets, wire breakouts and electrical components.

The high shrink ratios mean that only seven sizes are required to cover a wide range of substrate diameters. Typical applications are environmental sealing of electrical components including wire splices and harness breakouts as well as sealing cable ends against moisture ingress.

### TEMPERATURE RATING

- Continuous operating temperature from **-55°C up to +110°C**
- Minimum shrink temperature: **+80°C**
- Minimum full recovery temperature: **+110°C**
- **3:1 and 4:1** shrink ratio

### SPECIFICATIONS\*

- UL: **E85381, 600 V, 110°C**
- Flammability Rating: **ASTM D2671, Proc. B (Black only)**
- TE: **Specification 108-120009 (black), RK-6024 (colours and clear)**

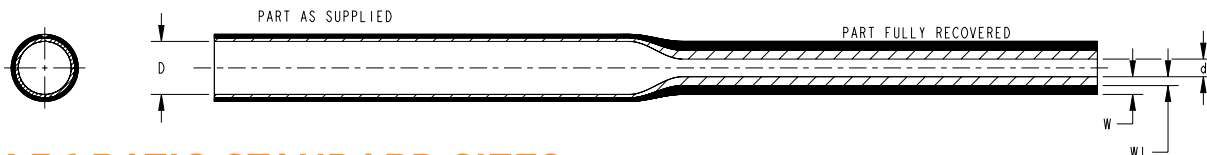
### MARKETS

- Aerospace, Defense & Military

### TYPICAL APPLICATION

- Sealing and protection of connector back shells, breakouts and connector to cable transitions.
- High shrink ratio allows for repair of damaged cable jackets without removing connectors.

## DIMENSIONS (MILLIMETERS/INCHES)



### ATUM 3:1 RATIO STANDARD SIZES

SIZE	INSIDE DIAMETER AS SUPPLIED (MIN) D		INSIDE DIAMETER AFTER RECOVERY (MAX) d		TOTAL WALL THICKNESS AFTER RECOVERY (NOM) W		WALL THICKNESS TOLERANCE AFTER RECOVERY		INNER MELTABLE WALL THICKNESS AFTER RECOVERY (NOM) W1	
	mm	in	mm	in	mm	in	mm	in	mm	in
3/1	3.00	.118	1.00	.039	1.00	.039	0.30	.012	0.50	.020
4.5/1.5	4.50	.177	1.50	.059	1.00	.039	0.30	.012	0.50	.020
6/2	6.00	.236	2.00	.079	1.00	.039	0.30	.012	0.50	.020
9/3	9.00	.354	3.00	.118	1.40	.055	0.30	.012	0.60	.024
12/4	12.00	.472	4.00	.157	1.78	.070	0.38	.015	0.75	.030
19/6	19.00	.748	6.00	.236	2.25	.089	0.55	.022	0.80	.031
24/8	24.00	.945	8.00	.315	2.54	.100	0.55	.022	1.00	.039
40/13	40.00	1.575	13.00	.512	2.54	.100	0.55	.022	1.00	.039

### ATUM 4:1 RATIO STANDARD SIZES

SIZE	INSIDE DIAMETER AS SUPPLIED (MIN) D		INSIDE DIAMETER AFTER RECOVERY (MAX) d		TOTAL WALL THICKNESS AFTER RECOVERY (NOM) W		WALL THICKNESS TOLERANCE AFTER RECOVERY		INNER MELTABLE WALL THICKNESS AFTER RECOVERY (NOM) W1	
	mm	in	mm	in	mm	in	mm	in	mm	in
4/1	4.00	.157	1.00	.039	1.00	.039	0.30	.012	0.50	.020
8/2	8.00	.315	2.00	.079	1.00	.039	0.30	.012	0.50	.020
12/3	12.00	.472	3.00	.118	1.40	.055	0.30	.012	0.60	.024
16/4	16.00	.630	4.00	.157	1.78	.070	0.38	.015	0.75	.030
24/6	24.00	.945	6.00	.236	2.25	.089	0.55	.022	0.80	.031
32/8	32.00	1.260	8.00	.315	2.54	.100	0.55	.022	1.00	.039
52/13	52.00	2.047	13.00	.512	2.54	.100	0.55	.022	1.00	.039

#### ORDERING INFORMATION

Color	Standard: Black (-0) Nonstandard: Clear in 3:1 sizes only (-X, non-flame-retardant jacket); other colors available on request.
Size selection	Always order the largest size that will shrink snugly over the component to be covered. Special order sizes are available upon request.
Standard Packaging***	In 1.2-meter (4-foot) lengths or on spools.
Ordering Description	Specify product family, size/range, color, and package. <b>ATUM-X/X-X-X</b> <ul style="list-style-type: none"> <li>→ Package</li> <li>→ Color</li> <li>→ Size/Range</li> <li>→ Product Family</li> </ul>

Are you looking to seal out moisture, offer enhanced strain relief, or provide rigorous mechanical protection?  
Do you need a flame retardant product? Leverage TE Connectivity's (TE) comprehensive portfolio of heat shrink tubing products in a wide range of applications.

Learn more: [TE.com/heatshrinktubing](https://www.te.com/heatshrinktubing)

© 2024 TE Connectivity. All Rights Reserved.

TE Connectivity, TE connectivity (logo), TE and Raychem are trademarks owned or licensed by the TE Connectivity Ltd. family of companies. Other logos, product and company names mentioned herein may be trademarks of their respective owners.

While TE has made every reasonable effort to ensure the accuracy of the information in this brochure, TE does not guarantee that it is error-free, nor does TE make any other representation, warranty or guarantee that the information is accurate, correct, reliable or current. TE reserves the right to make any adjustments to the information contained herein at any time without notice. TE expressly disclaims all implied warranties regarding the information contained herein, including, but not limited to, any implied warranties of merchantability or fitness for a particular purpose. The dimensions in this brochure are for reference purposes only and are subject to change without notice. Specifications are subject to change without notice. Consult TE for the latest dimensions and design specifications.

05/24