

4

3

2

1

THIS DRAWING IS UNPUBLISHED. RELEASED FOR PUBLICATION
 © COPYRIGHT ALL RIGHTS RESERVED.


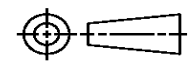
LOC		DIST		REVISIONS			
P	LTR	DESCRIPTION		DATE	DWN	APVD	
	M2	ECR-12-015281		28AUG-2012	MY	TE	

Dimensioning and tolerancing per ASME Y14.5M-2009

REPLACED BY OCEAN STYLE APPLICATOR PART NUMBER 2151058-1

FOR REPLACEMENT PARTS FOR APPLICATOR 1528092 REFER TO ADDITIONAL PAGE(S). SPARE PARTS KIT (IF LISTED) WILL REMAIN AVAILABLE.

THE REPLACEMENT OCEAN STYLE APPLICATOR HAS THE SAME TERMINATOR/PRESS INTERFACE AS APPLICATOR 1528092

THIS DRAWING IS A CONTROLLED DOCUMENT.		DWN M. YOUNGER	 TE Connectivity	
DIMENSIONS:		CHK T. ELBIN		
		APVD T. ELBIN	NAME FINE ADJ SIDE FD HD-I APPL	
TOLERANCES UNLESS OTHERWISE SPECIFIED:		PRODUCT SPEC	RESTRICTED TO	
0 PLC ± 1 PLC ± 2 PLC ± 3 PLC ± 4 PLC ± ANGLES ±		APPLICATION SPEC	SIZE A3	DRAWING NO C-1528092
MATERIAL	FINISH	WEIGHT	CAGE CODE	SCALE
		CUSTOMER ACCESSIBLE PRODUCTION DRAWING		SHEET 1 OF 2 REV M2

THIS DRAWING IS A CONTROLLED DOCUMENT.
 1528092
 THIS INFORMATION IS CONFIDENTIAL AND PROPRIETARY TO TYCO ELECTRONICS CORPORATION AND ITS WORLDWIDE SUBSIDIARIES AND AFFILIATES. IT MAY NOT BE DISCLOSED TO ANY OTHER ENTITY WITHOUT THE WRITTEN AUTHORIZATION OF TYCO ELECTRONICS CORPORATION, HARRISBURG, PENNSYLVANIA, USA.
 3308-8 (1/08)

PART NUMBER	REV	FIRST USED	TERMINATOR	FEED TYPE	DESCRIPTION
1528092-1	M	-	LEADMAKER	MECH POST FEED	CUTS CARRIER
1528092-2	M	-	BENCH	MECH PRE FEED	CUTS CARRIER
1528092-6	M	-	LEADMAKER	MECH POST FEED	CONTINUOUS CARRIER
7-1528092-1	M	-	LEADMAKER	MECH POST FEED	-1 AND SPARE PARTS
7-1528092-2	M	-	BENCH	MECH PRE FEED	-2 AND SPARE PARTS
7-1528092-6	M	-	LEADMAKER	MECH POST FEED	-6 AND SPARE PARTS
7-1528092-7	K	-	-	-	SPARE PARTS KIT

CRIMP DATA (AMP TERMINAL)

TERMINAL NAME: MICRO TIMER 2 CONTACT

CRIMP	SIZE	TYPE	RANGE
WIRE	2.03 [.080 IN]	F	0.50mm ² - 1.00mm ²
INSUL	2.54 [.100 IN]	0	1.4-2.1 [.055-.083 IN]

WIRE STRIP LENGTH: 3.8-4.4 [.149-.173 IN]

APPL INSTRUCTION: 408-8322 & 408-8490

TERMINAL: 114-18082 (B)
 APPL SPEC: 114-18081-1 (A)

FEED: 11.0 [.433 IN]

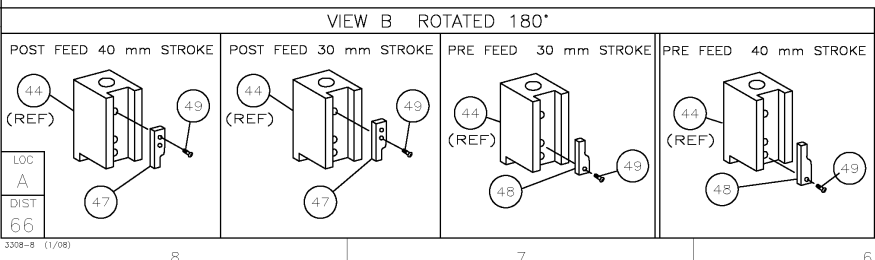
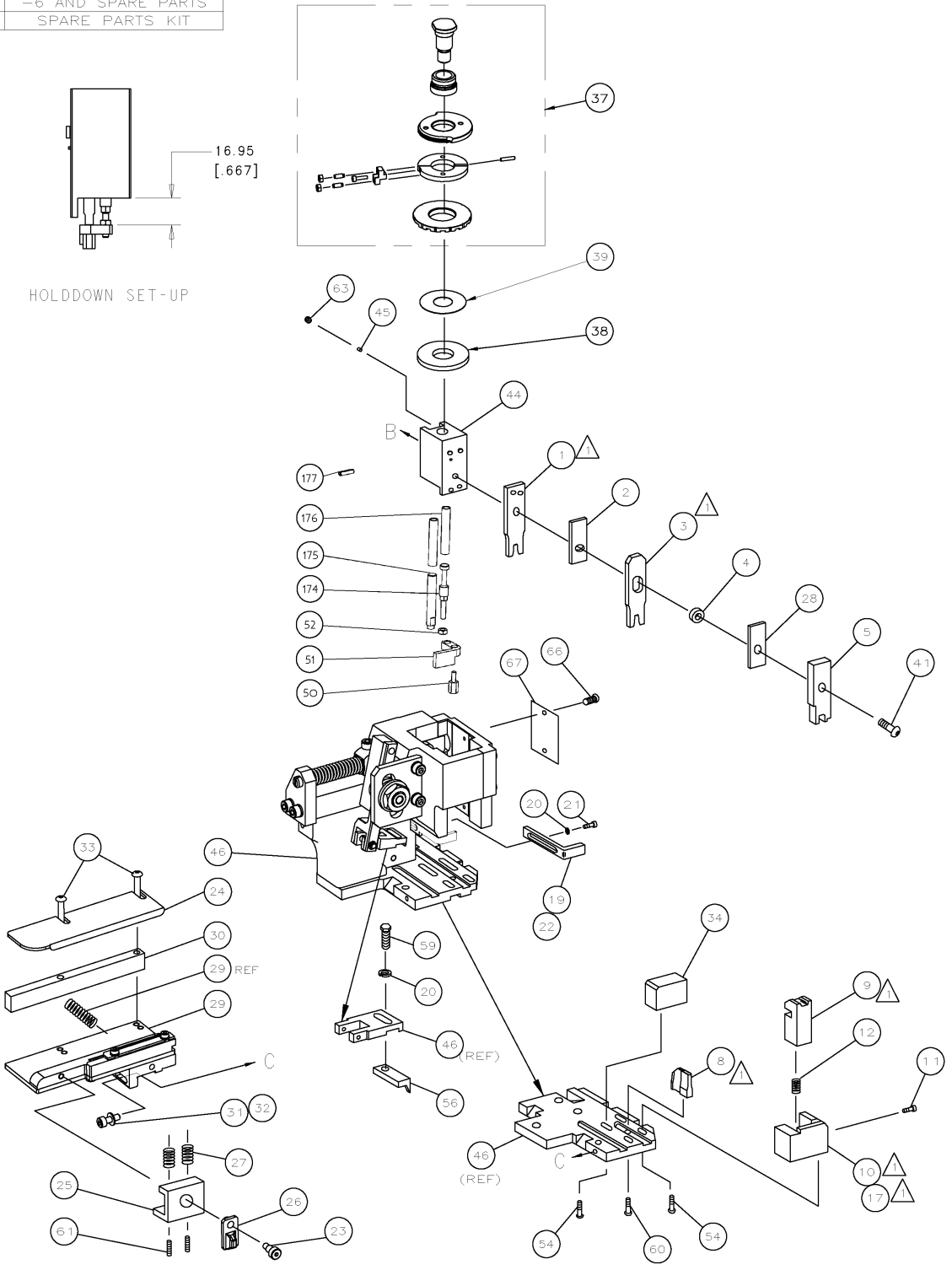
TERMINALS APPLIED

964263 (A)	964267 (B)	1241860 (A)
-	-	-
-	-	-
-	-	-
-	-	-
-	-	-
-	-	-
-	-	-
-	-	-

WIRE SIZE mm ² awg	CRIMP HEIGHT *	REF SETTING *
1.00mm ²	1.20 ±0.05 [.047 ±.002 IN]	B4
0.85mm ²	1.19 ±0.05 [.047 ±.002 IN]	B6
0.75mm ²	1.18 ±0.05 [.046 ±.002 IN]	B8
0.70mm ²	1.18 ±0.05 [.046 ±.002 IN]	C0
0.50mm ²	1.15 ±0.05 [.045 ±.002 IN]	C5

SET UP GAGE 458637-3	LAYOUT L1426008
-------------------------	--------------------

- RECOMMENDED SPARE PARTS:
- 2. GREASE RAM, CAM, CAM FOLLOWER AND FEED ROD LIGHTLY.
 - 3. LUBRICATE DAILY PER THE APPLICATOR INSTRUCTION SHEET SUPPLIED WITH THE APPLICATOR.



*** WARNING:**
 ON INSTALLATION, SET WIRE DISC TO LARGEST WIRE SIZE SETTING. USE OF SETTINGS BELOW MIN REQ'D CRIMP HEIGHT SETTING WILL CAUSE DAMAGE TO CRIMP TOOLING.

QTY	REQD PER ASSY	PART NO	DESCRIPTION	ITEM NO			
1	1	1	1	1	993111-8	PIN, SLOTTED SPRING 3.0X12.0	177
2	2	2	2	2	3-22280-7	SPRING, COMPRESSION	176
1	1	1	1	1	1752353-1	GUIDE PIN, HOLD DOWN	175
1	1	1	1	1	1901680-1	GUIDE PIN, HOLD DOWN	174
							73
1	1	1	1	1	1528092	PRINT, APPLICATOR LOG SHEET	72
1	1	1	1	1	1338705-3	DOCUMENTATION PACKAGE	71
							70
							69
							68
1	1	1	1	1	461264-5	PLATE, IDENTIFICATION	67
2	2	2	2	2	21017-2	SCR,DRIVE(#2x.19)ID PLATE	66
							65
							64
1	1	1	1	1	3-18031-0	SCR,SKT SET(M6X6 LW)RAM	63
							62
2	2	2	2	2	2-18032-5	SCR,SOC SET(M5X20)DRAG	61
1	1	1	1	1	18024-7	SCR,BHC(M4X10)ANVIL	60
1	1	1	1	1	5-18022-2	SCR,HEX(M4X8)FEED FINGER	59
							58
							57
1	1	1	1	1	1338685-1	PAWL, FEED	56
							55
4	4	4	4	4	18024-8	SCR,BHC(M4X12)SHEAR HOLDER	54
							53
1	1	1	1	1	1-18030-0	NUT, HEX, REG M3.5	52
1	1	1	1	1	1901681-1	HOLD DOWN, TERMINAL	51
1	1	1	1	1	1-1752354-9	STANDOFF, HOLD DOWN	50
1	1	1	1	1	18024-3	SCR,BHC(M3X10)CAM	49
1	1	1	1	1	1338675-1	CAM, PRE FEED 30 & 40 mm ST	48
1	1	1	1	1	1338676-1	CAM, POST FEED 30 & 40 mm ST	47
1	1	1	1	1	1320999-3	APPLICATOR BASIC SUBASSY	46
1	1	1	1	1	690191-1	PLUG, NYLON	45
1	1	1	1	1	1633724-1	RAM	44
							43
							42
1	1	1	1	1	2-18024-6	SCR,BHC(M8X25)RAM	41
							40
1	1	1	1	1	690125-1	SHIM SUBASSY	39
1	1	1	1	1	469367-9	SPACER, FINE ADJUST	38
1	1	1	1	1	879103-3	FINE ADJUST HEAD SUBASSY	37
							36
							35
1	1	1	1	1	1-1752356-3	SUPPORT, TERMINAL	34
2	2	2	2	2	1-18024-0	SCR,BHC(M4X20)STRIP GUIDE	33
1	1	1	1	1	18027-2	WASHER, FLAT(M4)	32
1	1	1	1	1	1-18023-2	SCR,SKT CAP(M4X12)MOUNT BLOCK	31
1	1	1	1	1	1320908-1	SPACER, STRIP GUIDE	30
1	1	1	1	1	1633073-2	STRIP GUIDE PLATE ASSY	29
1	1	1	1	1	1-455888-9	SPACER, FRONT SHEAR DEP	28
2	2	2	2	2	1-22284-0	SPRING, DRAG	27
1	1	1	1	1	356835-1	LEVER, DRAG RELEASE	26
1	1	1	1	1	240792-1	DRAG, TERMINAL	25
1	1	1	1	1	1320928-1	GUIDE, STRIP (REAR)	24
1	1	1	1	1	980371-4	SCR,SHC SHLD	23
1	1	1	1	1	690472-2	STRIPPER	22
1	1	1	1	1	1-18023-1	SCR,SHC(M4X10)STRIPPER	21
2	2	2	2	2	18025-2	WASHER,LOCK(M4)STRIPPER	20
1	1	1	1	1	690472-1	STRIPPER	19
							18
1	1	1	1	1	1338684-1	HOLDER, SHEAR, FRONT (NO-CUT)	17
							16
							15
							14
							13
1	1	1	1	1	3-22280-3	SPRING, SHEAR	12
1	1	1	1	1	356885-4	STOP, SHEAR	11
1	1	1	1	1	1320921-1	HOLDER, SHEAR, FRONT (CUT)	10
1	1	1	1	1	454276-1	SHEAR, FLOAT (FRONT)	9
1	2	2	2	1	1333204-3	ANVIL	8
							7
							6
1	1	1	1	1	1-455889-4	DEPRESSOR, SHEAR (FRONT)	5
1	1	1	1	1	238011-2	SPACER, BLOCK CRIMPER	4
1	2	2	2	1	4-456135-8	CRIMPER, INSULATION	3
1	1	1	1	1	455888-3	SPACER, CRIMPER	2
1	2	2	2	1	1-456405-6	CRIMPER, WIRE	1
-77	-76	-72	-71	-6	-2	-1	

LOC: A DIST: 66	APPROVED: M1 REVISION RECORD	DATE: 14NOV2011	SCALE: S:X	DIMENSIONS: INCHES TOLERANCES UNLESS OTHERWISE SPECIFIED: 0.1 PLC ±.005 1.2 PLC ±.005 2.5 PLC ±.005 3.0 PLC ±.005 4.0 PLC ±.005	DESIGNED: M.CLIFFORD DRAWN: F.BACKHURST	MATERIAL: - HEAT TREAT: -	TE Connectivity Harrisburg, PA 17105-3608
					NAME: - FINISH: FINE ADJ SIDE FD HD-1 APPL		
					SCALE: A1	DRAWING NO: 1528092	SHEET: 1 of 1 REV: M1

CUSTOMER ACCESSIBLE PRODUCTION DRAWING