

PART NUMBER	REV	FIRST USED
1855520-1	A	122500-1
1855520-2	A	565435-5

SUPERSEDED BY 1855520-1

-1	LEADMAKER & BENCH MODEL G 1-5/8" STROKE	AIR FEED
-2	BENCH MODEL K 1-1/8" STROKE	AIR FEED

SUPERSEDED BY 1855520-1

TERMINAL NAME: .110 ULTRA-POD RECEPTACLE	
521219	CRIMP DATA (AMP TERMINAL)
521408	CRIMP HEIGHT
521437	WIRE SIZE
521228	WIRE SIZE
521436	WIRE SIZE
	NOT USED
	CRIMP SIZE TYPE RANGE
	WIRE .062 [1.57mm] F 22-18
	INSUL .140 [3.56mm] 0 Ø.080-.140
WIRE STRIP LENGTH	TERM APPL SPEC
.156-.172	114-2124
FEED	SET UP GAGE LAYOUT
.770	AI 408-8095 & 8098 458637-2

REF	SETTING
	B2
	C8
	D5

SUPERSEDED BY 1855520-1

2	2	-	A	21021-3	NUT HEX, S/L 6-32	135
1	1	-	A	21024-8	WASHER, LOCK	133
2	2	-	A	21024-5	WASHER, LOCK	132
4	4	-	A	1-21899-3	WASHER	131
1	1	-	A	21009-7	SCR, SOC SET LOK 1/4-20 X .75	130
1	1	-	A	21009-2	SCR, SOC SET 1/4-20 X .25	129
2	2	-	A	1-23030-2	SCR, SOC HD LOK 8-32 X .75	128
3	3	-	A	22733-3	SCR, SOC HD LOK 6-32 X .25	127
4	4	-	A	23030-2	SCR, SOC HD LOK 6-32 X .38	126
1	1	-	B	3-21001-4	SCR, SOC HD 3/8-16 X .88	125
2	2	-	A	4-21000-3	SCR, SOC HD 10-32 X 2.00	124
						123
2	2	-	A	3-21000-7	SCR, SOC HD 10-32 X .75	122
1	1	-	A	1-21000-9	SCR, SOC HD 6-32 X .38	121
1	1	-	A	2-21000-8	SCR, SOC HD 8-32 X .62	120
						119
4	4	-	A	2-21002-9	SCR, BUT HD 10-32 X .75	118
1	1	-	A	7-21002-9	SCR, BUT HD 5/16-24 X 1.00	117
						116
2	2	-	A	6-21002-1	SCR, BUT HD 10-24 X .25	115
16	16	-	A	2-21002-1	SCR, BUT HD 8-32 X .38	114
3	3	-	A	2-22733-8	SCR, BUT HD 1/4-20 X .63	113
2	2	-	A	1-21003-3	SCR, FLT HD 4-40 X .25	112
2	2	-	A	852521-1	PIN, MODIFIED DOWEL Ø.094 X .49	111
1	1	-	A	1-21030-7	PIN, DOWEL Ø.188 X 1.50	110
1	1	-	A	1-21919-1	PIN, DOWEL Ø.094 X .38	109
1	1	-	A	1-22183-7	PIN, GROOVE TYPE 67 Ø.125 X .63	108
2	2	-	A	21026-3	WASHER, LOCK EXT. TOOTH	107
1	1	-	A	2-22286-2	SPRING, EXTENSION LE-031B-2	106
						105
4	4	-	A	7-22280-3	SPRING, COMPRESSION LC-042C-17	104
1	1	-	A	4-22279-9	SPRING, COMPRESSION LC-026B-9	103
2	2	-	A	2-22280-9	SPRING, COMPRESSION LC-032C-6	102
1	1	-	A	1-23470-7	SPRING, COMPRESSION LC-035C-19	101
2	2	-	A	22354-7	STUD, 8-32	100
2	2	-	A	3-21000-6	SCR., SHC 10-32 X .62	99
						98
						97
1	1	-	A	461264-1	TAG, IDENTIFICATION	96
2	2	-	A	21017-2	SCREW DRIVE 2 X .19	95
						94
						93
						92
						91
						90
						89
						88
						87
						86
						85
						84
1	1	-	B	852287-1	PLATE, RETAINER	83
1	1	-	B	852286-1	LATCH, INSERT	82
1	1	-	B	852284-1	ARM, LATCH	81
1	1	-	A	852281-2	ROLLER	80
1	1	-	B	852245-2	CAM, INSERT	79
1	1	-	B	852246-1	CAM, VALVE	78
						77
1	1	-	A	354993-1	AIR CYLINDER 1-1/8 X .625	76
						75
						74
2	2	-	A	22311-2	NIPPLE	73
						72
						71
-2	-1	U/M	DWG SIZE	PART NO	DESCRIPTION	ITEM NO

SUPERSEDED BY 1855520-1

68	68	IN	A	27319-4	TUBING, NYLON Ø.250	70
2	2	-	A	980282-3	CONNECTOR, MALE 1/8NPT X .25	69
						68
						67
						66
						65
						64
						63
						62
						61
						60
						59
						58
						57
						56
						55
						54
						53
						52
						51
						50
						49
						48
						47
						46
						45
						44
						43
						42
						41
						40
						39
						38
						37
						36
						35
						34
						33
						32
						31
						30
						29
						28
						27
						26
						25
						24
						23
						22
						21
						20
						19
						18
						17
						16
						15
						14
						13
						12
						11
						10
						9
						8
						7
						6
						5
						4
						3
						2
						1
-2	-1	U/M	DWG SIZE	PART NO	DESCRIPTION	ITEM NO

- 1 RECOMMENDED SPARE PARTS.
- 2 ITEM NOT SHOWN. (SEE A.I.SHEET 8095)
- 3 CUTTING TOLERANCE ±.25
- 4. SPRING LOADED TONKER (P/N 354853-2) MUST BE USED WHEN RUNNING THE APPLICATOR ON A LEADMAKER.

- 5 ITEMS 57 TO BE USED WITH INSULATION DIAMETER .080-.110. THIS MAY VARY DUE TO INSULATION TYPE.
- 6 ITEMS 58 TO BE USED WITH INSULATION DIAMETER .110-.140. THIS MAY VARY DUE TO INSULATION TYPE.

THIS DRAWING IS A CONTROLLED DOCUMENT.

TE Connectivity Ltd.

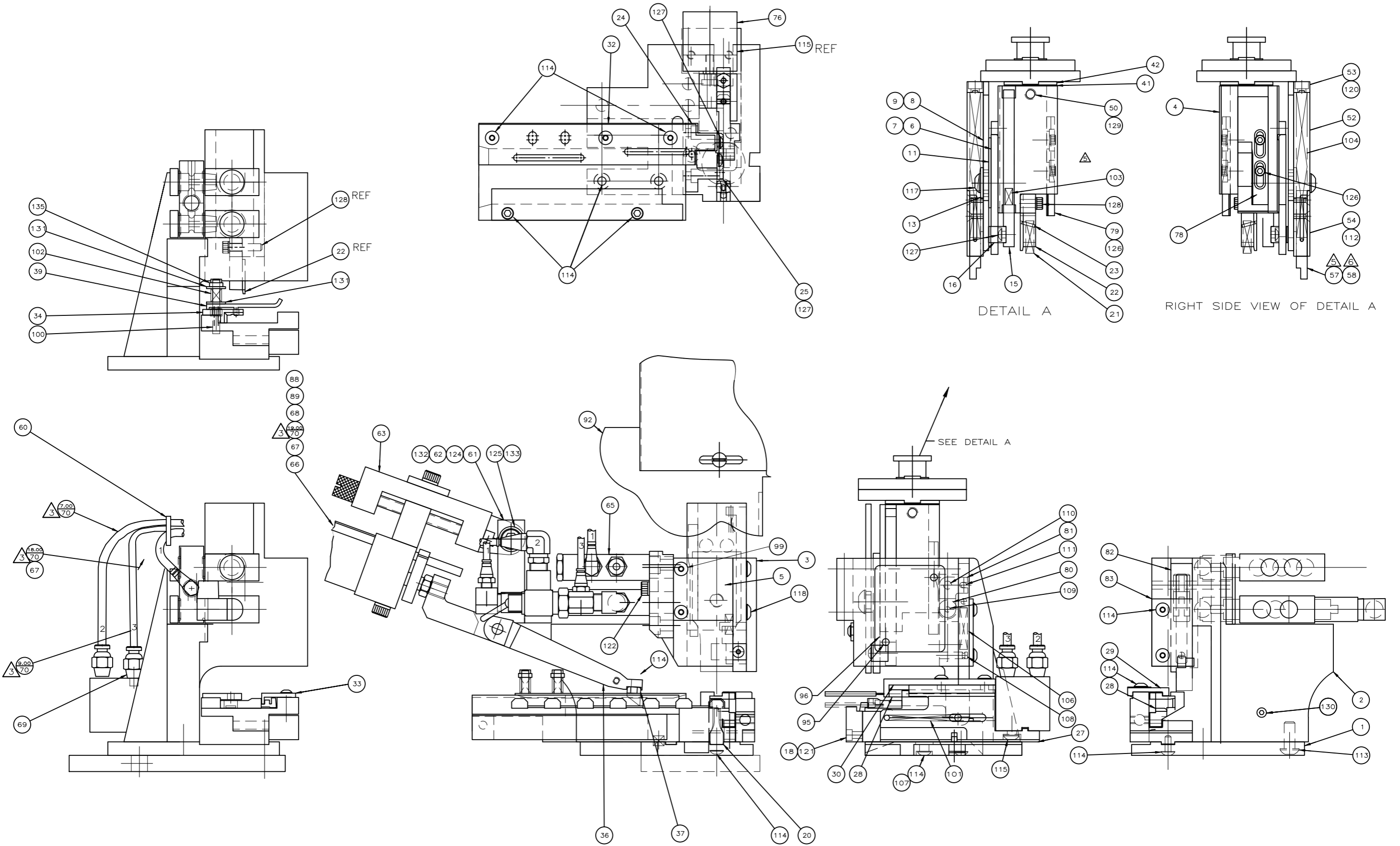
ULTRA-POD APPLICATOR, .110 STRAIGHT W/FA

0 PLC ± .005
1 PLC ± .002
2 PLC ± .001
3 PLC ± .0005
4 PLC ± .0002

APPROVED: [Signature] DATE: 30JUN2009

SCALE: 1:1 SHEET 1 OF 2 REV A1

REVISIONS				
P	LR	DESCRIPTION	DATE	APPD
-	-	-	-	-



THIS DRAWING IS A CONTROLLED DOCUMENT.		DRW: K. STAKEM 30JUN2009	TE Connectivity Ltd.
		CHK: G. BAILEY 30JUN2009	
		APPD: T. ELBIN 30JUN2009	NAME: ULTRA-POD APPLICATOR, .110 STRAIGHT W/FA
DIMENSIONS: mm TO TOLERANCES UNLESS OTHERWISE SPECIFIED:		PRODUCT SPEC APPLICATION SPEC	SIZE: A1 CAGE CODE: 00779 DRAWING NO: 1855520
MATERIAL: - FINISH: -		WEIGHT: -	RESTRICTED TO: - CUSTOMER ACCESSIBLE PRODUCTION DRAWING SCALE: 1:1 SHEET: 1 OF 2 REV: A1