

PART NUMBER	REV	FIRST USED	
1855522-1	B	122500-1	T-UNIT
1855522-2	B	680017-4	K-UNIT
1855522-3	B	354500-1	G-UNIT
1855522-4	A	122500-1	T-UNIT
1855522-5	A	ARA-APPL	AMP-ARA

SUPERSEDED BY 1855522-1  
 SUPERSEDED BY 1855522-1  
 OBSOLETE  
 OBSOLETE

- 1 RECOMMENDED SPARE PARTS
  - 2 ITEMS NOT SHOWN
  - 3 TOL ±.25
  - 4 TO RUN THIS APPLICATOR ON THE AMPOMATOR SEE DOC. PACKAGE ITEM 146.
  - 5 USE SEALANT PN 1-23419-5 AS SHOWN
  - 6 AFTER QUALIFICATION, DRILL AND PIN ITEM 2 TO ITEM 1 USING ITEM 169, 2 PLACES. (-4 ONLY)
  - 7 GREASE LIGHTLY ITEMS 8 AND 9.
  - 8 CANNOT RUN 2 WIRES ON LEADMAKER.
9. SPRING LOADED TONKER(PN 354853-1) MUST BE USED WHEN RUNNING APPLICATOR ON LEADMAKER.

CRIMPING DATA				THIS APPLICATOR WILL APPLY	
PAD LETTER	CRIMP HEIGHT	WIRE SIZE	REF SETTING	TERMINAL P/N	
A	.073	#14	A5	520963	521547
B	.068	2 #18	B1	521011	521848
C	.064	#16	C2	521081	521997
D	.058	#18	D3	521113	1969104
CRIMP SIZE TYPE	FEED			521114	1969206
WIRE	.110 F	.760		521367	1969447
INS.	.180 F			521094	1-1969529-1
INSULATION RANGE	WIRE RANGE			521567	-
.120-.170	18-14	AI SHEET 8095 & 8098			
TERM APPL SPEC					
114-2124					

OBSOLETE  
 OBSOLETE  
 SUPERSEDED BY 1855522-1  
 SUPERSEDED BY 1855522-1

QTY REQD PER ASSY	PART NO	DESCRIPTION	ITEM NO					
			187					
			186					
			185					
			184					
			183					
			182					
			181					
			180					
			179					
			178					
			177					
			176					
2	2	2	2	-	21026-4	WASHER, STAR	175	
							174	
							173	
							172	
							171	
							170	
							169	
							168	
							167	
							166	
							165	
							164	
							163	
							162	
							161	
							160	
							159	
							158	
							157	
							156	
							155	
80	80	80	80	80	IN	27319-4	TUBING,NYLON .250 DIA	154
							INSERT,COUPLING	153
								152
								151
								150
								149
								148
								147
								146
								145
								144
								143
								142
								141
-5	-4	-3	-2	-1	U/M	PART NO	DESCRIPTION	ITEM NO
QTY REQD PER ASSY						PARTS LIST		

OBSOLETE  
 OBSOLETE  
 SUPERSEDED BY 1855522-1  
 SUPERSEDED BY 1855522-1

QTY REQD PER ASSY	PART NO	DESCRIPTION	ITEM NO					
			140					
			139					
			138					
			137					
			136					
			135					
			134					
			133					
			132					
			131					
			130					
			129					
			128					
			127					
			126					
			125					
			124					
			123					
			122					
			121					
			120					
			119					
			118					
			117					
			116					
			115					
			114					
			113					
			112					
			111					
			110					
			109					
			108					
			107					
			106					
			105					
			104					
			103					
			102					
			101					
			100					
			99					
			98					
			97					
			96					
			95					
			94					
			93					
			92					
			91					
			90					
			89					
			88					
			87					
			86					
			85					
			84					
			83					
			82					
			81					
			80					
			79					
			78					
			77					
			76					
			75					
			74					
			73					
			72					
			71					
5	5	5	5	5	-	22733-3	SCR,BUT HD CP 6-32 X .25 LOK-WEL	71
-5	-4	-3	-2	-1	U/M	PART NO	DESCRIPTION	ITEM NO
QTY REQD PER ASSY						PARTS LIST		

OBSOLETE  
 OBSOLETE  
 SUPERSEDED BY 1855522-1  
 SUPERSEDED BY 1855522-1

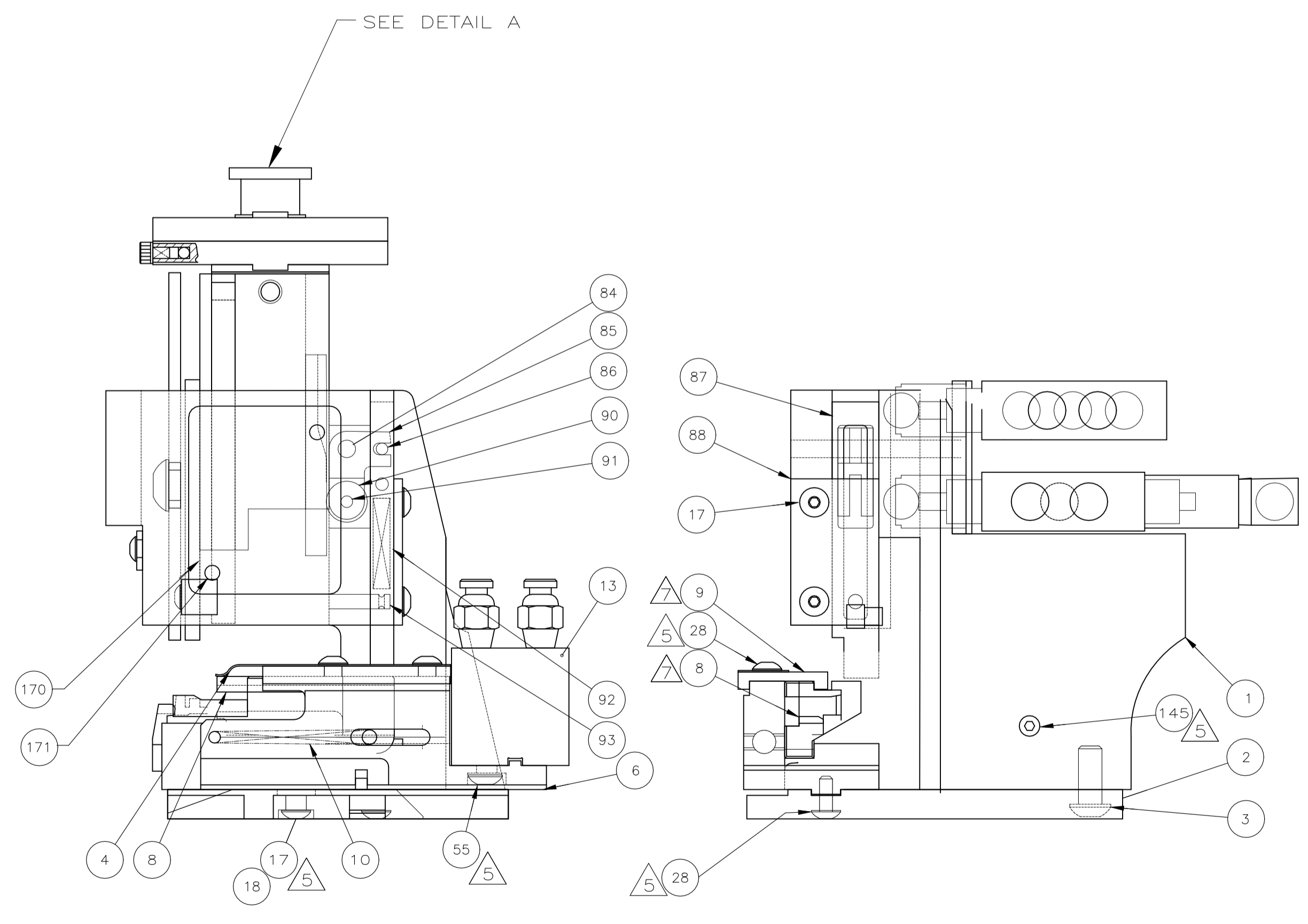
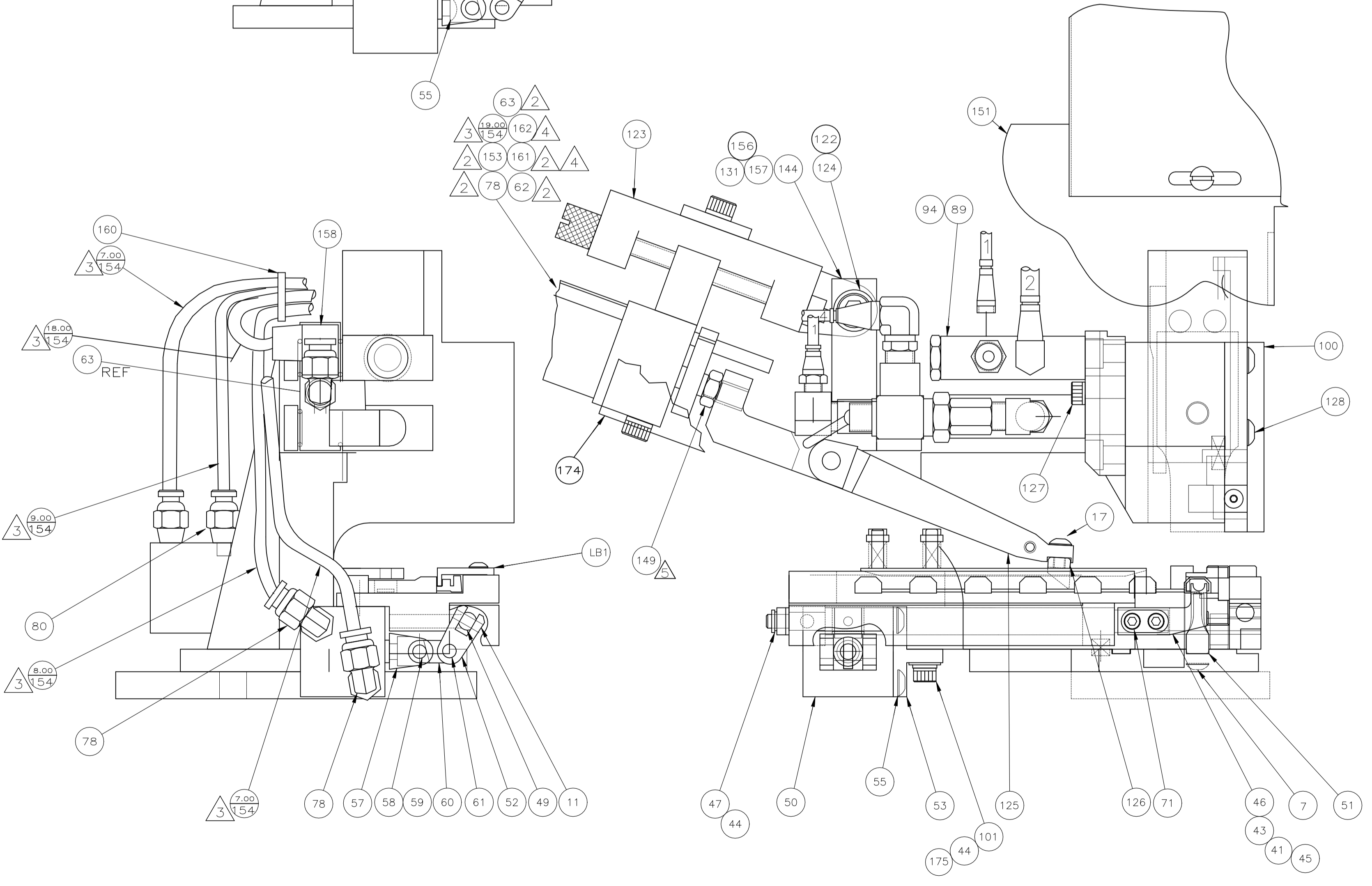
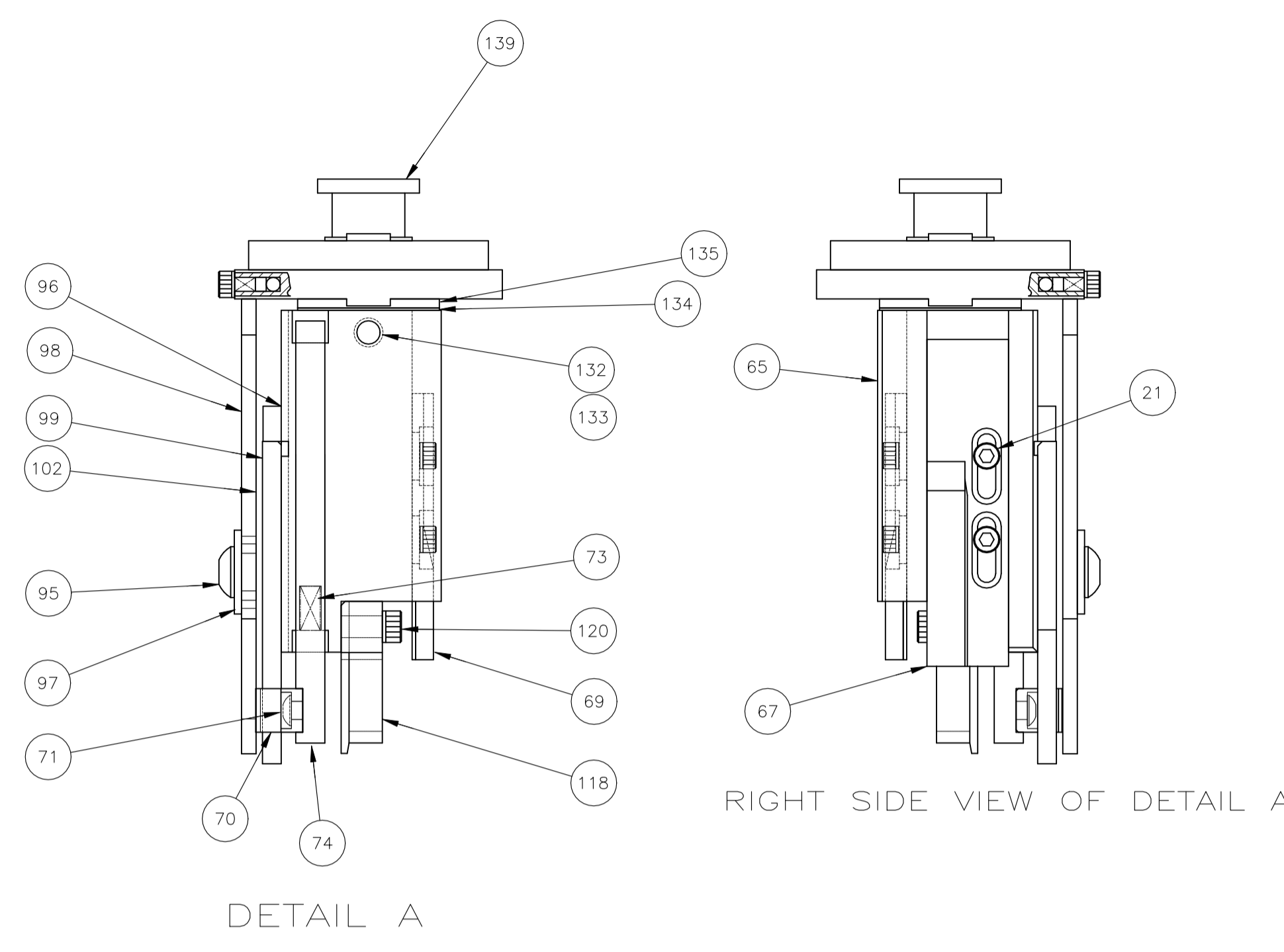
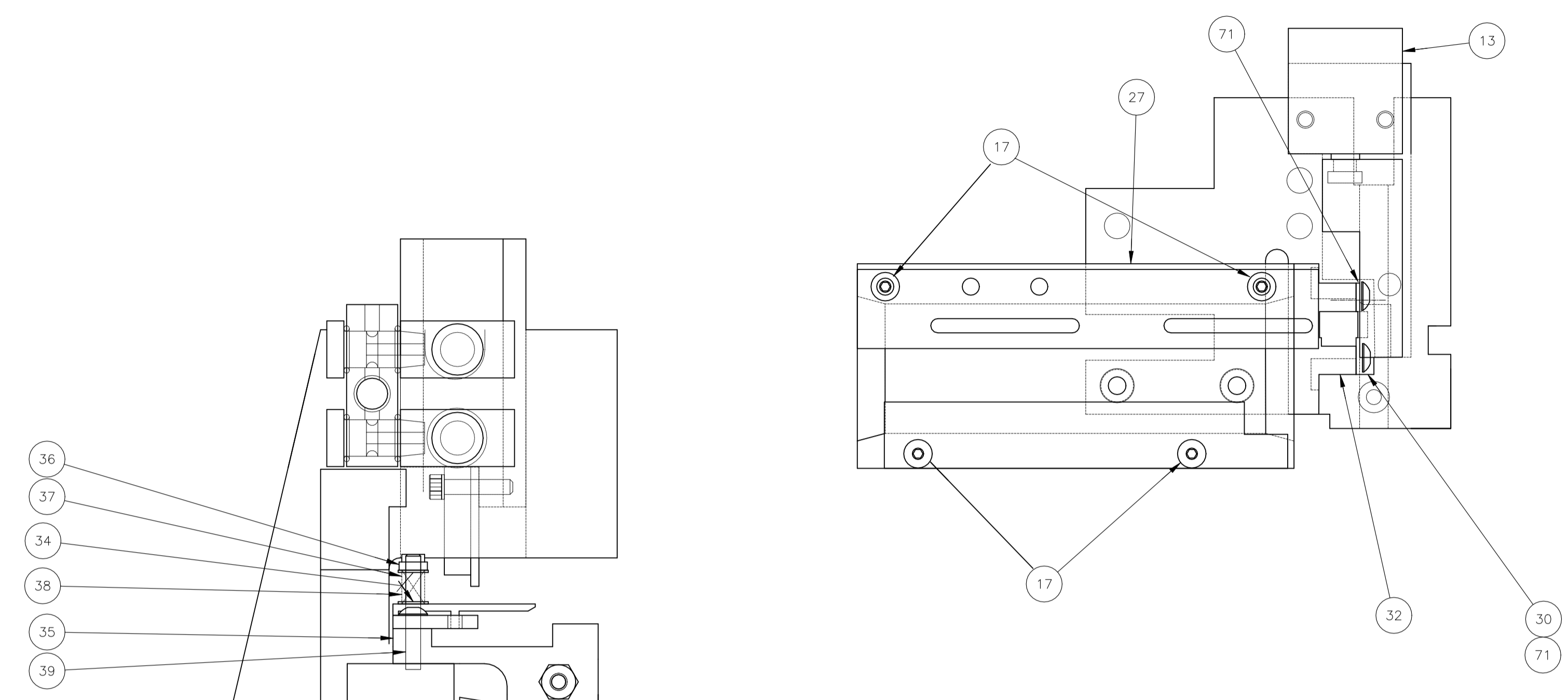
QTY REQD PER ASSY	PART NO	DESCRIPTION	ITEM NO					
			70					
			69					
			68					
			67					
			66					
			65					
			64					
			63					
			62					
			61					
			60					
			59					
			58					
			57					
			56					
			55					
			54					
			53					
			52					
			51					
			50					
			49					
			48					
			47					
			46					
			45					
			44					
			43					
			42					
			41					
			40					
			39					
			38					
			37					
			36					
			35					
			34					
			33					
			32					
			31					
			30					
			29					
			28					
			27					
			26					
			25					
			24					
			23					
			22					
			21					
			20					
			19					
			18					
			17					
			16					
			15					
			14					
			13					
			12					
			11					
			10					
			9					
			8					
			7					
			6					
			5					
			4					
			3					
			2					
			1					
-5	-4	-3	-2	-1	U/M	PART NO	DESCRIPTION	ITEM NO
QTY REQD PER ASSY						PARTS LIST		

REVISIONS						
P	LTR	DESCRIPTION	DATE	DN	APVD	
B2	REVISED PER	ECR-24-211576	12JUN2024	GK	RK	

THIS DRAWING IS A CONTROLLED DOCUMENT.

DIMENSIONS: INCHES	TOLERANCES UNLESS OTHERWISE SPECIFIED:	DIN K STAKEM 30JUN2009	CHK T ELBIN 30JUN2009	APVD G. BAILEY 30JUN2009	NAME
0 PLC ± .01	1 PLC ± .005	TE Connectivity Ltd.			
2 PLC ± .002	3 PLC ± .001	ULTRA-POD APPLICATOR .250 STRAIGHT WITH FINE ADJUST			
4 PLC ± .0005	ANGLES ± .1	APPLICATION SPEC			
MATERIAL	FINISH	WEIGHT	SIZE	CAGE CODE	DRAWING NO
			A1	00779	1855522
CUSTOMER ACCESSIBLE PRODUCTION DRAWING		SCALE	1:1	SHEET	1 of 2
		REV	B2		

REVISIONS				
P	LTR	DESCRIPTION	DATE	APPROV
-	SEE SHEET 1			



THIS DRAWING IS A CONTROLLED DOCUMENT.		DWG: K-STAKEM CHK: T-FELBIN APPROV: G-BAILEY	04MAY2023 30JUN2009 30JUN2009		
DIMENSIONS: INCHES	TOLERANCES UNLESS OTHERWISE SPECIFIED:	0. PLC ± .005	1. PLC ± .003	2. PLC ± .002	3. PLC ± .001
		4. PLC ± .0005	ANGLES ± .5°	<b>ULTRA-POD APPLICATOR .250 STRAIGHT WITH FINE ADJUST</b>	
MATERIAL: -	FINISH: -	WEIGHT: -	SIZE: A1	CAGE CODE: 00779	DRAWING NO: 1855522
CUSTOMER ACCESSIBLE		PRODUCTION DRAWING	SCALE: 1:1	SHEET 2 OF 2	REV B2