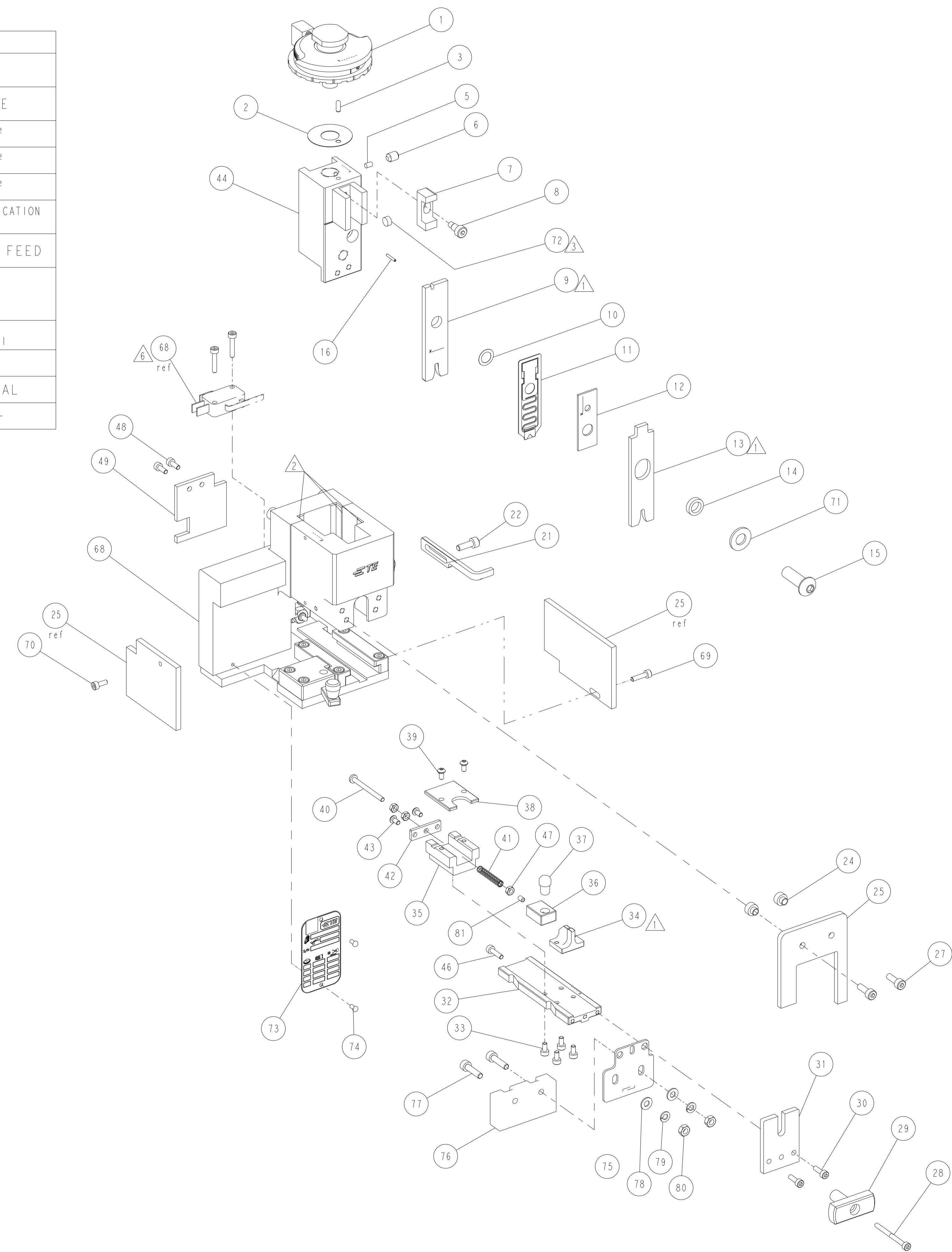


| PART NUMBER | REV | DESCRIPTION |
|-------------|-----|----------------------|
| 3-1893391-5 | D | Mini Applicator-LP |
| 7-1893391-7 | C | Crimp Tooling Kit-LP |

| REVISIONS | | | | | |
|-----------|-----|---------------------------|-----------|-----|------|
| P | LTN | DESCRIPTION | DATE | OWN | APPD |
| A3 | | ECO-15-011143 | 11AUG2015 | DLO | WAO |
| A4 | | ECO-16-000169 | 07JAN2016 | DLO | WAO |
| C | | ECR-23-164495 | 23JAN2023 | RRD | RN |
| D | | REVISED PER ECR-23-194804 | 11DEC2023 | GK | GR |

| CRIMP DATA | | | |
|--|---|---|-----------------|
| TERMINAL DESCRIPTION RING TONGUE | | | |
| WIRE ADJUSTMENT DISC POSITION | CRIMP HEIGHT | WIRE SIZE | |
| B6 | 1.81 MM (.071") | 1.00 MM ² | |
| C1 | 1.74 MM (.069") | 0.75 MM ² | |
| C6 | 1.67 MM (.066") | 0.50 MM ² | |
| WIRE STRIP LENGTH 6.00 MM ± 0.50 MM | | TERMINAL APPLICATION SPECIFICATION 114-18022 | |
| CRIMPER | CRIMP WIDTH | CRIMPER PROFILE | APPLICATOR FEED |
| WIRE CRIMPER | 2.54 mm (.100 in) | F | - |
| INS. CRIMPER | 3.05 mm (.120 in) | Ov | - |
| INSULATION RANGE 1.40 - 2.30 MM | WIRE RANGE 0.50 - 1.00 MM ² | GAUGE 1707132-1 | |
| TERMINALS APPLIED: | | | |
| TERMINAL | SEAL | TERMINAL | SEAL |
| 969091 | - | - | - |

- NOTES:
- 1 RECOMMENDED SPARE PARTS
 - 2 GREASE BEARING SURFACES LIGHTLY
 - 3 MAGNET, ITEM 6, MUST BE ORIENTED CORRECTLY IN ORDER TO PROPERLY ACTUATE THE COUNTER.
 - 4 UNLESS SPECIFIED OTHERWISE TORQUE VALUES SHALL BE USED PER DOCUMENT, 101-35000.
 - 5 APPLICATOR TO BE USED ON BENCH TERMINATORS ONLY.
 - 6 WHEN WORKING IN THE G11 OR G11+ TERMINATOR THE INSTALLATION OF MICROSWITCH (ASSEMBLED IN APPLICATOR BASIC ASSY, ITEM #68) IN THE TERMINATOR IS NOT NEEDED. THE INSTALLATION OF THE MICROSWITCH IS MANDATORY ONLY FOR TERMINATORS THAT DO NOT FEATURE THE MAGNETIC ACTUATOR ITEM #76.



| | | | | |
|---|-------|-------------|------------------------------------|---------|
| - | 1 | 18032-1 | SCR, SET, FLT PNT, M3 X 5.0 | 81 |
| - | 2 | 5018030-2 | NUT, HEX, REG, RoHS, M4 | 80 |
| - | 2 | 1-18026-0 | WASHER, SPRG LOCK, REG M4 | 79 |
| - | 2 | 1-18028-2 | WASHER, FLAT, REG M4 | 78 |
| - | 2 | 2168083-8 | SCR, SKT HD CAP, RoHS, M4 X 16 | 77 |
| - | 1 | 2168489-1 | ACTUATOR, SPARE, MC1 | 76 |
| - | 1 | 2844821-1 | BRACKET, ACTUATOR, MINI-SIZE | 75 |
| - | 2 | 2168078-1 | SCREW, DRIVE, RH, RoHS, 2 x .188 | 74 |
| - | 1 | 2119740-1 | TAG, IDENTIFICATION | 73 |
| - | 1 | 994969-1 | MAGNET, RARE EARTH, HIGH ENERGY | 72 |
| - | 1 | 1-18028-0 | WASHER, FLAT, REG M8 | 71 |
| - | 1 | 18023-3 | SCR, SKT HD CAP M3 X 8.0 | 70 |
| - | 1 | 18023-5 | SCR, SKT HD CAP M3 X 12.0 | 69 |
| - | 1 | 2077852-1 | APPLICATOR BASIC ASSEMBLY, MINI-LP | 68 |
| - | 1 | 2076888-1 | REAR APPLICATOR GUARD | 49 |
| - | 2 | 18023-3 | SCR, SKT HD CAP M3 X 8.0 | 48 |
| - | 3 | 18030-1 | NUT, HEX, REG M3 | 47 |
| - | 1 | 18023-5 | SCR, SKT HD CAP M3 X 12.0 | 46 |
| - | 1 | 1707115-1 | RAM, MINI APPLICATOR | 44 |
| - | 2 | 18024-1 | SCR, BTN SKT HD CAP (M3 X 6.0) | 43 |
| - | 1 | 1707957-2 | REAR COVER - | 42 |
| - | 1 | 1-22279-1 | SPRING, COMPRESSION | 41 |
| - | 1 | 4-18019-4 | SCR, PAN SLT HD MACH M3 X 35.0 | 40 |
| - | 2 | 18024-1 | SCR, BTN SKT HD CAP (M3 X 6.0) | 39 |
| - | 1 | 2076240-3 | COVER, TERMINAL SUPPORT | 38 |
| - | 1 | 1-1707366-2 | PIN DOWEL | 37 |
| - | 1 | 2076239-1 | SLIDING TERMINAL SUPPORT | 36 |
| - | 1 | 2076219-1 | SUPPORT, SLIDING BLOCK | 35 |
| 1 | 1 | 3-1707820-6 | SPECIAL ANVIL-MINI LP - | 34 |
| - | 4 | 18023-2 | SCR, SKT HD CAP M3 X 6.0 | 33 |
| - | 1 | 1707825-7 | GUIDE BLOCK - | 32 |
| - | 1 | 624887-4 | APPLICATOR GUARD | 31 |
| - | 2 | 18023-4 | SCR, SKT HD CAP M3 X 10.0 | 30 |
| - | 1 | 1707779-1 | KNOB | 29 |
| - | 1 | 9-18023-4 | SCR, SKT HD CAP M3 X 35.0 | 28 |
| - | 2 | 1-18023-2 | SCR, SKT HD CAP M4 X 12.0 | 27 |
| - | 1 | 1707831-5 | APPLICATOR GUARD | 25 |
| - | 2 | 1707368-1 | SPACER, APPL. GUARD | 24 |
| - | 2 | 1-18023-2 | SCR, SKT HD CAP M4 X 12.0 | 22 |
| - | 1 | 2405964-1 | STRIPPER | 21 |
| - | 1 | 1-993111-0 | PIN, SLOTTED SPRING 1.5 X 10.0 | 16 |
| - | 1 | 2-18024-6 | SCR, BTN SKT HD CAP (M8 X 25.0) | 15 |
| - | 1 | 238011-2 | BLOCK, CRIMPER SPACER | 14 |
| 1 | 1 | 573447-2 | INSULATION CRIMPER (OV) | 13 |
| - | 1 | 1-690407-0 | SPACER, CRIMPER | 12 |
| - | 1 | 624511-3 | MOVING SPACER | 11 |
| - | 1 | 2076147-1 | WASHER, SPACER | 10 |
| 1 | 1 | 453805-1 | CRIMPER, WIRE | 9 |
| - | 1 | 1707121-2 | SCREW, SOCKET HD SHOULDER | 8 |
| - | 1 | 690402-1 | BLOCK, INSULATION ADJUSTMENT | 7 |
| - | 1 | 18032-8 | SCR, SET, FLT PNT, M6 X 8.0 | 6 |
| - | 1 | 690191-1 | PLUG, NYLON | 5 |
| - | 1 | 1-992946-4 | PIN, DOWEL 3 X 8 | 3 |
| - | 1 | 1707150-1 | WASHER, FLAT | 2 |
| - | 1 | 2077830-1 | WIRE DISC, FINE ADJUST. | 1 |
| - | 77-35 | PART NO | DESCRIPTION | ITEM NO |

THIS DRAWING IS A CONTROLLED DOCUMENT.

| | | | |
|--|-----------|-----------------------------------|--|
| OWN: ALIERO | 14JUN2012 | | TE Connectivity |
| CHK: P. BARLETTA | 14JUN2012 | | |
| APVD: C. LIMA | 14JUN2012 | NAME: LOOSE PIECE MINI APPLICATOR | |
| DIMENSIONS: mm | | SIZE: A | CAGE CODE: 00779 |
| TOLERANCES UNLESS OTHERWISE SPECIFIED: | | DRAWING NO: 1893391 | RESTRICTED TO: - |
| 0 PLC ± | 1 PLC ± | WEIGHT: - | CUSTOMER ACCESSIBLE PRODUCTION DRAWING |
| 2 PLC ± | 3 PLC ± | SCALE: 3:5 | SHEET 1 OF 1 |
| 4 PLC ± | ANGLES ± | REV: D | |