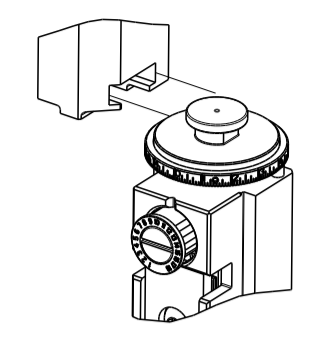


PART NUMBER	REVISION	DESCRIPTION	FEED TYPE
2150133-2	F	FINE CRIMP HEIGHT ADJUST	PNEUMATIC
7-2150133-7	E	CRIMP TOOLING KIT	-

ATLANTIC VERSION TERMINATOR
 INTERFACE ADAPTER



APPLICATOR DATA		
CRIMP	SIZE	TYPE
WIRE	3.56 mm [.140]	F
INSUL	-	-
APPL INSTRUCTIONS 408-35043		

TERMINAL DATA: TE TERMINAL		TE CRIMP SPECIFICATION	
TERMINAL NAME: SPLICE (AMPLIVAR) 9 SERRATIONS			
WIRE STRIP LENGTH		INSULATION DIAMETER RANGE	
5.34-6.10 mm [.210-.240 IN]			
TERMINAL APPLICATION SPECIFICATION	114-2003	-	-
TERMINALS APPLIED			
TE TERMINAL	TE TERMINAL	TE TERMINAL	TE TERMINAL
62308-2			

WIRE SIZE	CRIMP HEIGHT mm [INCH]	CRIMP HEIGHT REFERENCE SETTING
6000-7000 CMA	2.18 +/- 0.05 [.086 +/- .002]	5.8
5000-5999 CMA	2.08 +/- 0.05 [.082 +/- .002]	6.8
4000-4999 CMA	1.98 +/- 0.05 [.078 +/- .002]	7.8
3000-3999 CMA	1.88 +/- 0.05 [.074 +/- .002]	8.8

- RECOMMENDED SPARE PARTS
- REFER TO SUPPLIED INSTRUCTION SHEET FOR CLEANING, LUBRICATION AND STORAGE OF APPLICATOR.
- CRIMP HEIGHT REFERENCE SETTING WAS THE SETTING USED WHEN THE APPLICATOR WAS QUALIFIED AT THE FACTORY. ADJUSTMENT MAY BE NECESSARY WHEN RUNNING APPLICATOR IN THE FIELD.
- TERMINAL LUBRICANT IS RECOMMENDED.
- TERMINAL PITCH NOT COMPATIBLE WITH MECHANICAL FEED.
- 6. UNLESS SPECIFIED OTHERWISE TORQUE VALUES SHALL BE USED PER DOCUMENT, 101-35000.
- REFER TO CUSTOMER DRAWING 62308 NOT 3 FRO CRIMP HEIGHT FORMULA FOR SPECIFIC WIRE COMBINATIONS.

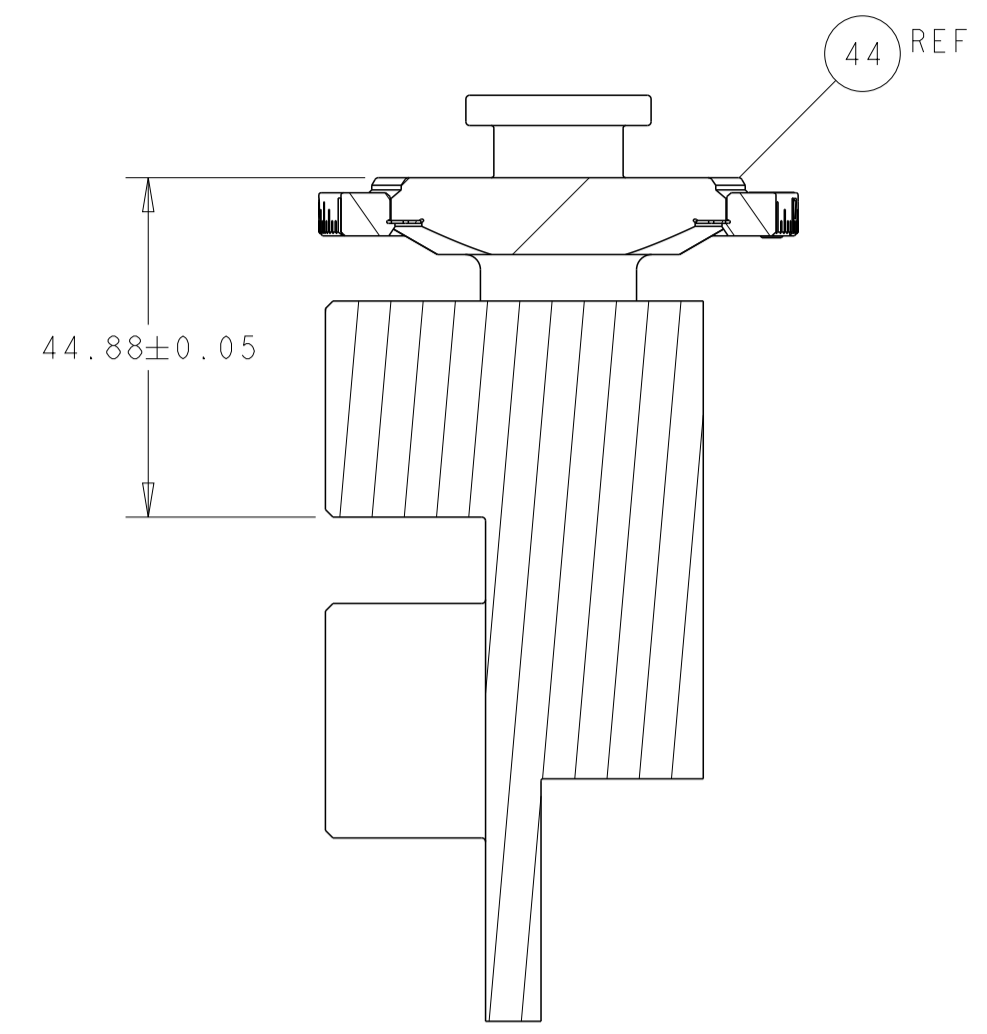
***WARNING**
 ON INSTALLATION, SET WIRE DISC TO CRIMP HEIGHT REFERENCE SETTING FOR LARGEST WIRE SIZE. CRIMP HEIGHT REFERENCE SETTINGS GREATER THAN THE VALUE SHOWN MAY CAUSE DAMAGE TO THE CRIMP TOOLING, REFER TO THE INSTRUCTION SHEET FOR PROPER SETUP AND ADJUSTMENTS.

LOC	DIST	REVISIONS					
A	66	P	LTN	DESCRIPTION	DATE	DMN	APVD
		D		ECR-21-001634	08FEB2021	JWC	TE
		E		ECR-21-007011	23JUL2021	FJG	TE
		E1		ECR-21-117809	19OCT2021	LG	TE
		F		ECR-24-210002	03JUN2024	ZZ	TE

-	1	23238-1	INSERT, COUPLING	278	
-	1	2030758-3	TUBING, POLYURETHANE	277	
-	1	986220-3	CLAMP, CABLE, BLACK	275	
-	1	2844280-1	MOUNT, AIR BLAST	273	
-	1	2119641-1	FEED CAM, AIR FEED	248	
-	1	2844940-7	AIR FEED MODULE	238	
-	REF	994970-2	COUNTER, MAGNETIC	164	
-	3	1-18023-0	SCR, SKT HD CAP M4 X 8.0	143	
-	2	1-18024-4	SCR, BTN SKT HD CAP (M5 X 20.0)	94	
-	2	1-18024-1	SCR, BTN SKT HD CAP (M5 X 10.0)	93	
-	4	2168400-1	SHCS, LOW HEAD, RoHS, M4 X 12	85	
-	1	2119955-2	ASSY, LUBRICATOR, END FEED	84	
-	4	2168083-1	SCR, SKT HD CAP, RoHS, M3 X 8.0	80	
-	1	1803607-4	DOCUMENTATION PACKAGE	71	
-	2	2-18032-2	SCR, SET, FLT PNT, M3 X 10.0	70	
-	1	2119740-1	TAG, IDENTIFICATION	67	
-	2	2168078-1	SCREW, DRIVE, RH, RoHS, 2 x .188	66	
-	1	5-18022-5	SCR, HEX HD CAP, M4 X 6.0	59	
-	2	2168400-4	SHCS, LOW HEAD, RoHS, M4 X 8	57	
-	2	5018030-1	NUT, HEX, REG, RoHS, M3	54	
-	2	986965-8	NUT, LOCK, HEX, TORQUE (M4)	53	
-	1	2063961-5	FEED FINGER	51	
-	1	18023-9	SCR, SKT HD CAP M4 X 6.0	49	
-	1	2-2119655-1	APPLICATOR BASIC ASSEMBLY, EF	46	
-	1	1803517-3	RAM ASSEMBLY, EF ATLANTIC	44	
-	1	2-2079383-0	SCR, BHSC, RoHS (M8 X 35)	41	
-	6	1-18028-2	WASHER, FLAT, REG M4	33	
-	2	2168083-3	SCR, SKT HD CAP, RoHS, M4 X 12.0	29	
-	1	460276-2	STRIPPER, SPECIAL	27	
-	2	1-2168083-5	SCR, SKT HD CAP, RoHS, M4 X 30	25	
-	1	3-1752371-0	PLATE, STRIP GUIDE	24	
-	1	1-462932-0	PLATE, STRIP COVER	23	
-	2	22281-8	SPRING, COMPRESSION	22	
-	2	18027-2	WASHER, FLAT, REG M4	21	
-	1	1803292-1	DRAG	20	
-	2	1901259-6	GUIDE, LOWER STRIP	18	
-	4	1-18024-9	SCR, BTN SKT HD CAP (M6 X 16.0)	17	
-	1	459684-4	PLATE GUIDE, RETAINING	11	
-	1	459580-1	PLATE, RETAINING	10	
-	1	2-459583-2	BODY, ANVIL	9	
-	1	459582-8	ANVIL, AMPLIVAR SPLICE	8	
-	1	459581-8	BLADE, SLUG	7	
-	-	-	-	4	
-	1	459587-1	GUIDE, CRIMPER	3	
-	-	-	-	2	
-	1	2-459585-1	CRIMPER, BLUNT F	1	
-	77	-2	PART NO	DESCRIPTION	ITEM NO

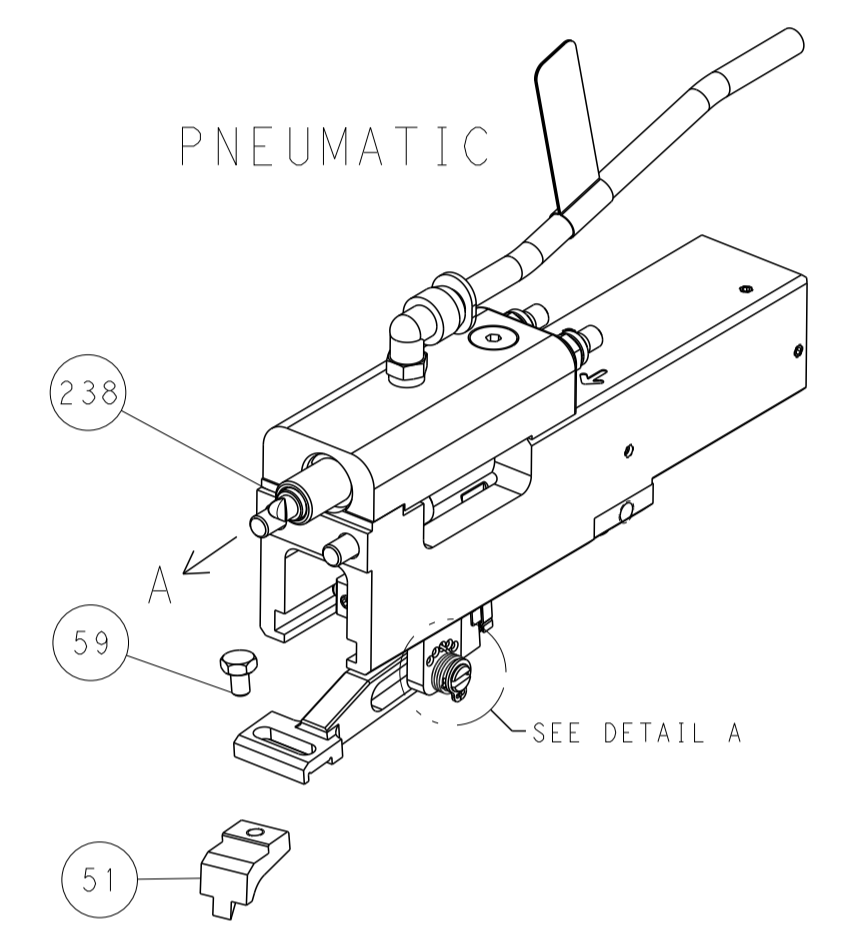
DIMENSIONS: mm 		TOLERANCES UNLESS OTHERWISE SPECIFIED: 0 PLC ± 1 PLC ± 2 PLC ± 3 PLC ± 4 PLC ± ANGLES ± FINISH ±		DWN: M. HERR 27JUL2018 CHK: T. ELBIN 27JUL2018 APVD: C. TOPPER 27JUL2018	NAME: Ocean End Feed Applicator SIZE: A 00779 C=2150133 SCALE: 1:1 SHEET: 1 OF 4 REV: F
MATERIAL: -		WEIGHT: -		Customer Accessible Production Drawing	

LOC	DIST	REVISIONS			
P	LTN	DESCRIPTION	DATE	OWN	APVD
A	66	SEE SHEET 1	-	-	-

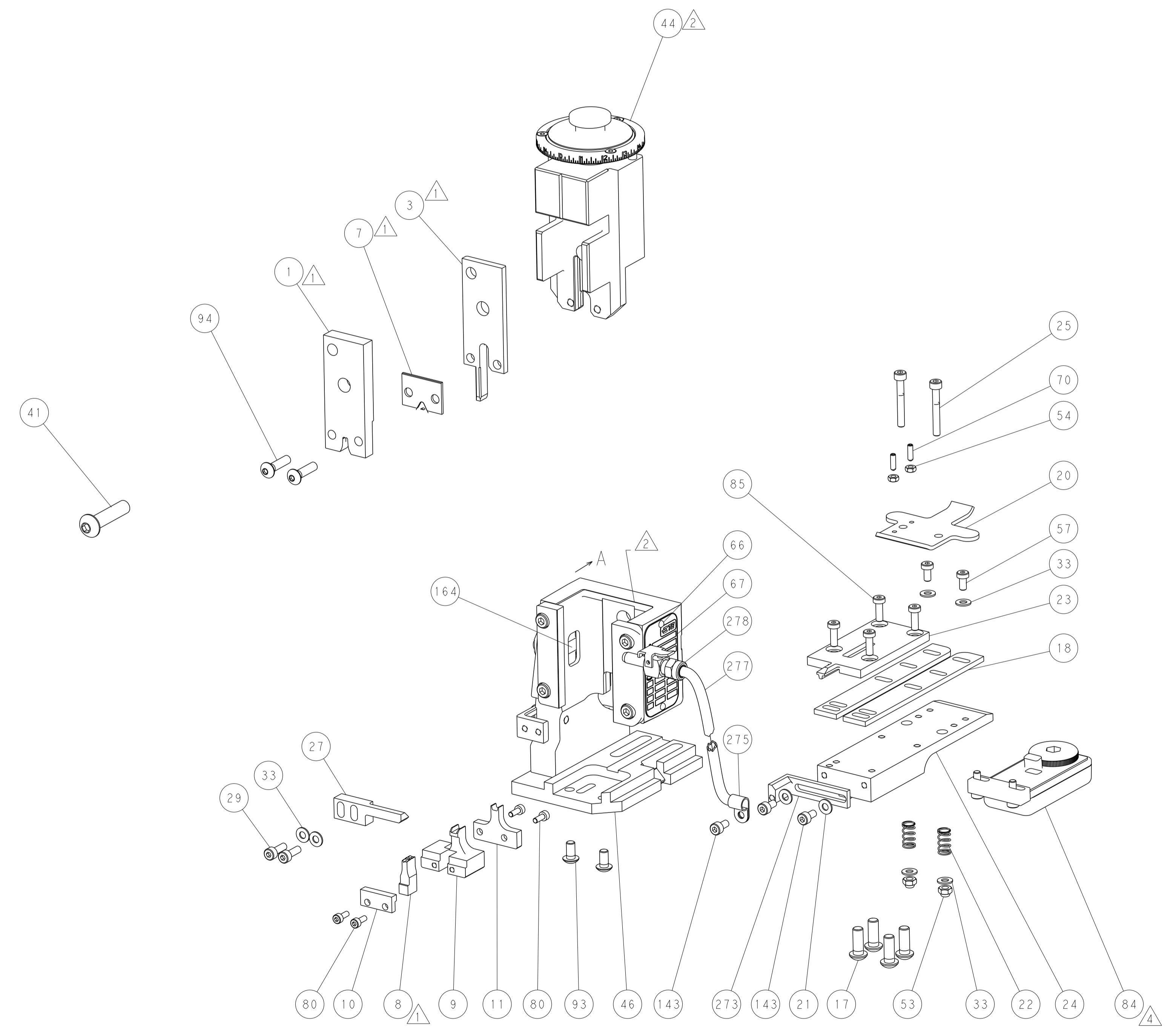
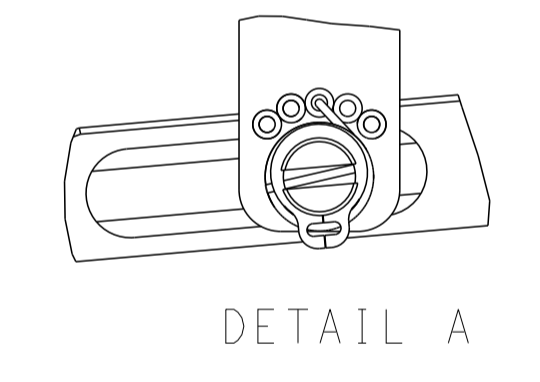


RAM SET-UP

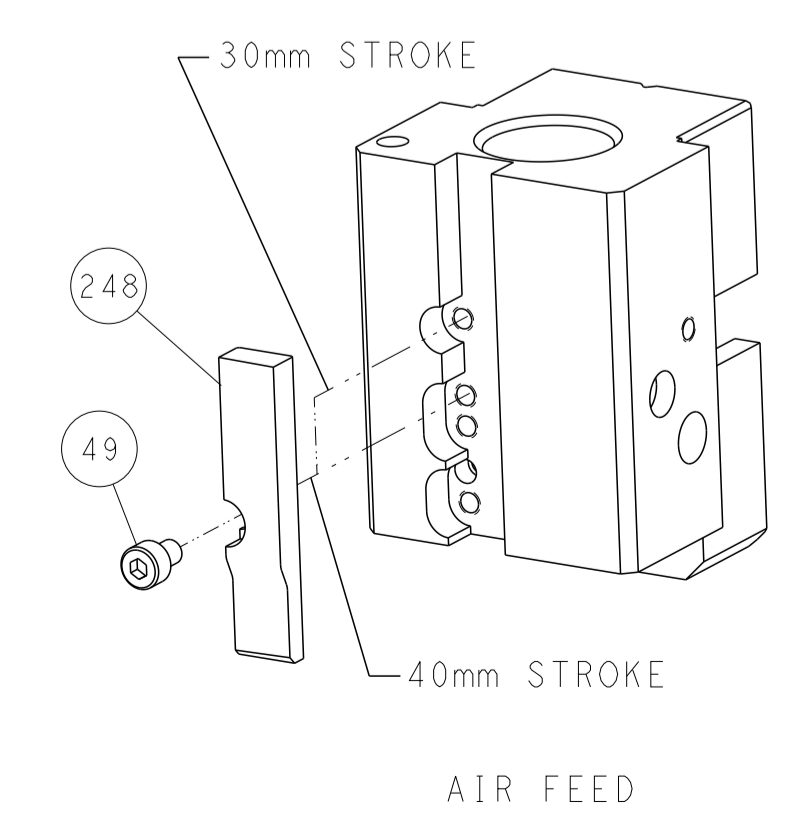
FEED TYPE



FEED SPRING SETTING POSITION



CAM POSITION



DIMENSIONS: mm 		TOLERANCES UNLESS OTHERWISE SPECIFIED: 0 PLC ± 1 PLC ± 2 PLC ± 3 PLC ± 4 PLC ± ANGLES ± FINISH		DWN M. HERR 27JUL2018 CHK T. ELBIN 27JUL2018 APVD C. TOPPER 27JUL2018		NAME Ocean End Feed Applicator	
MATERIAL:		WEIGHT:		SIZE CAGE CODE DRAWING NO. A1 00779 C=2150133		RESTRICTED TO:	
Customer Accessible Production Drawing				SCALE 1:1		SHEET 2 OF 4 REV F	