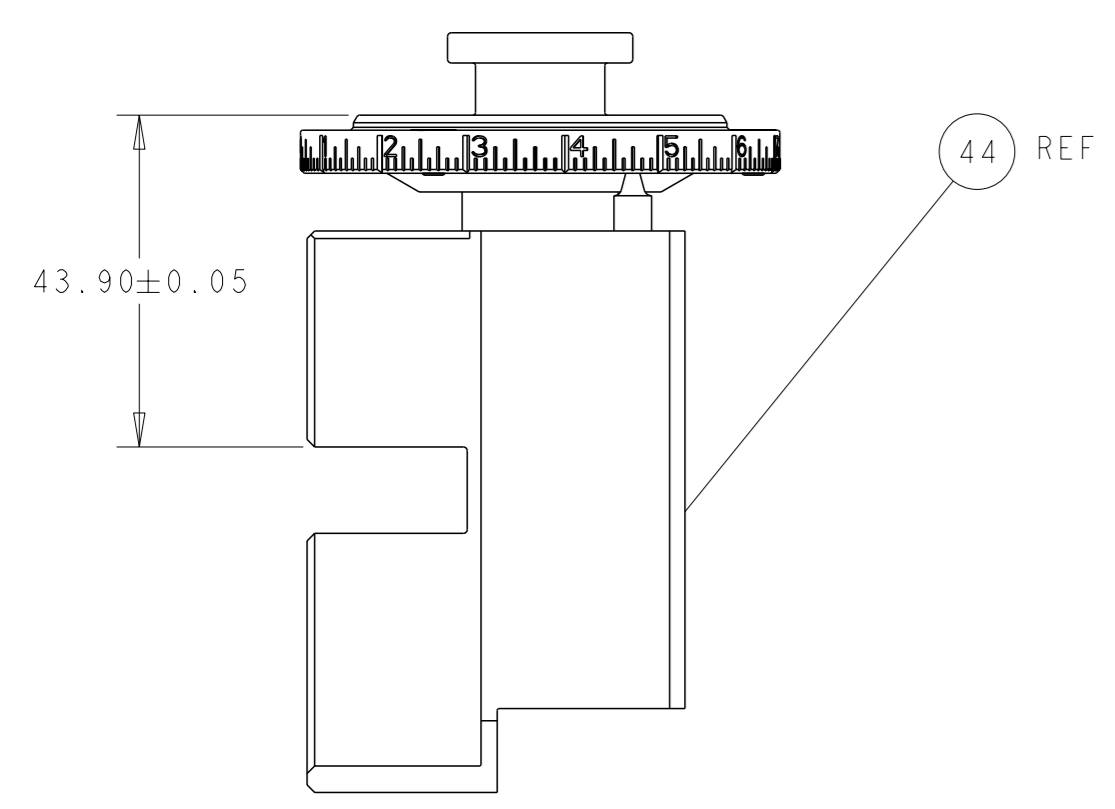
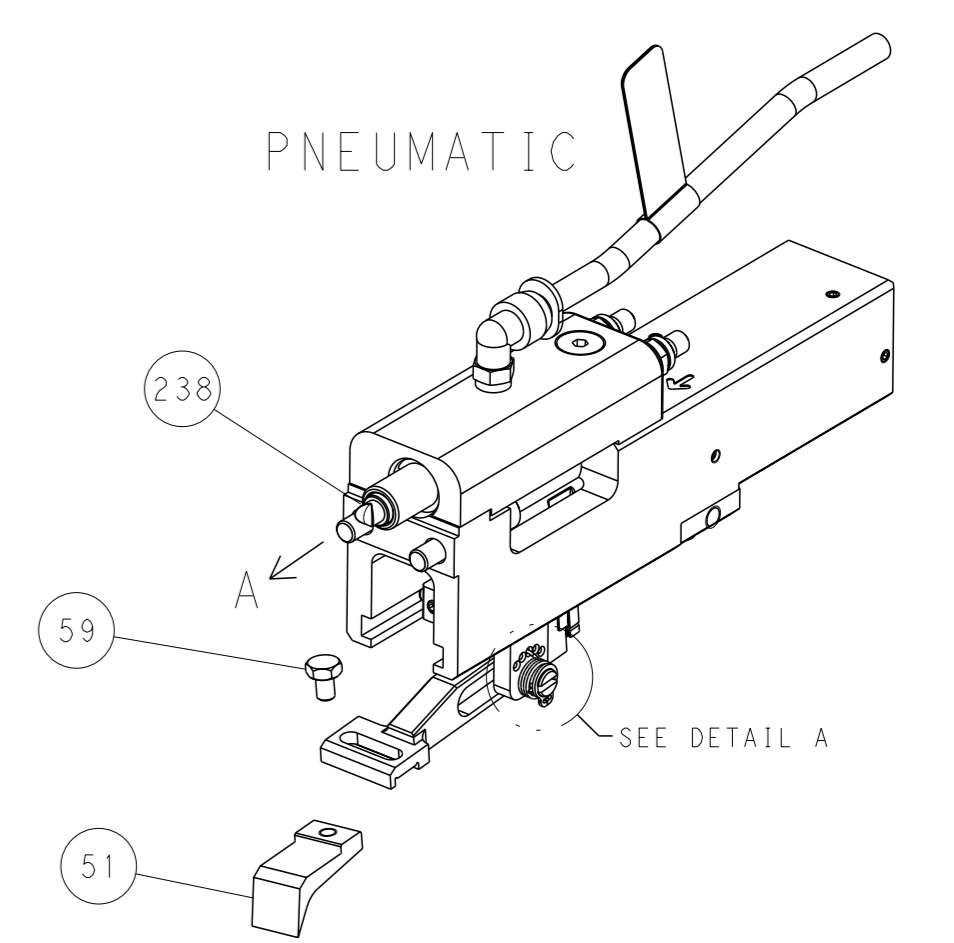
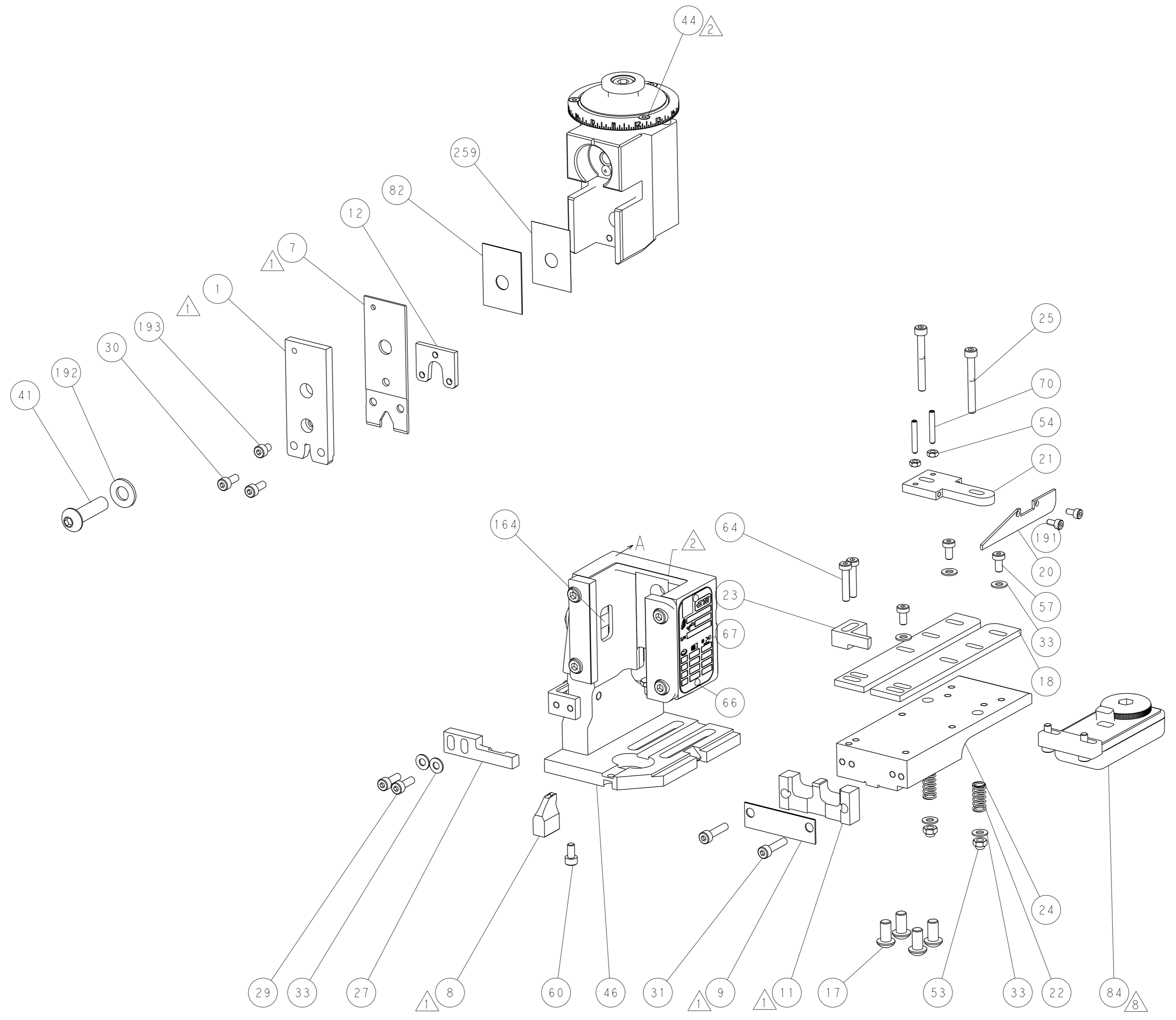


LOC	DIST	REVISIONS				
A	66	REV	DESCRIPTION	DATE	OWN	APVD
		-	SEE SHEET 1	-	-	-

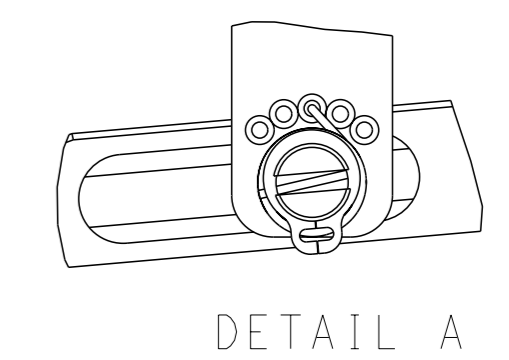


RAM SET-UP

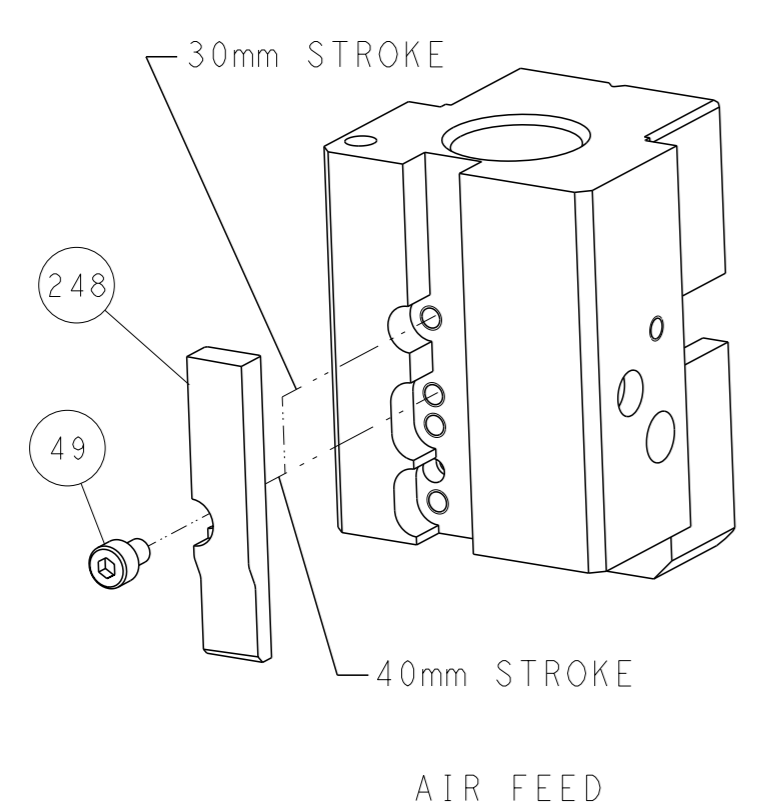
FEED TYPE



FEED SPRING SETTING POSITION



CAM POSITION

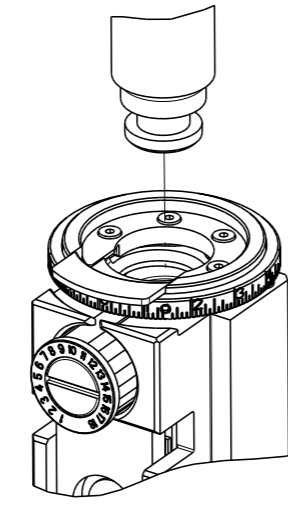


ATLANTIC VERSION
 Shown on sheets 1 of 4 & 2 of 4
 (Pacific version shown on sheets 3 of 4 & 4 of 4)

<small>THIS DRAWING IS UNPUBLISHED. RELEASED FOR PUBLICATION 2016 BY TYCO ELECTRONICS CORPORATION. ALL RIGHTS RESERVED.</small>		OWN: M. HERR CHK: G. BAILEY APVD: G. BAILEY	05DEC2016 05DEC2016 05DEC2016	TE Connectivity Harrisburg, PA 17105-3608
DIMENSIONS: mm 		TOLERANCES UNLESS OTHERWISE SPECIFIED: 0 PLC ± 1 PLC ± 2 PLC ± 3 PLC ± 4 PLC ± ANGLES FINISH ±	NAME: Ocean End Feed Applicator SIZE: A1 CAGE CODE: 00779 DRAWING NO: C=2150228	RESTRICTED TO: - SCALE: 1:1 SHEET: 2 of 4 REV: D
MATERIAL: -		WEIGHT: -	Customer Accessible Production Drawing	

8	7	6	5	4	3	2	1
THIS DRAWING IS UNPUBLISHED.		RELEASED FOR PUBLICATION		2016			
COPYRIGHT 2016 BY TYCO ELECTRONICS CORPORATION. ALL RIGHTS RESERVED.							
PART NUMBER	REVISION	DESCRIPTION	FEED TYPE				
2-2150228-2	D	FINE CRIMP HEIGHT ADJUST	PNEUMATIC				
7-2150228-7	A	CRIMP TOOLING KIT	-				

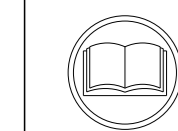
PACIFIC VERSION TERMINATOR
INTERFACE ADAPTER



APPLICATOR DATA		
CRIMP	SIZE	TYPE
WIRE	3.56 mm [.140]	F
APPL INSTRUCTIONS 408-35043		

TERMINAL DATA: TE TERMINAL		TE CRIMP SPECIFICATION	
TERMINAL NAME: AMPLIVAR SPLICE			
WIRE STRIP LENGTH 7.09-8.66 mm [.279-.341 IN]		INSULATION DIAMETER RANGE Ø -	
TERMINAL APPLICATION SPECIFICATION	(A)114-2002	-	-
	(B)114-2008	-	-
TERMINALS APPLIED			
TE TERMINAL	TE TERMINAL	TE TERMINAL	TE TERMINAL
(A) 62001-1	(A) 62001-2	(B) 42779-1	(B) 42779-2

WIRE SIZE	CRIMP HEIGHT mm [INCH]	CRIMP HEIGHT REFERENCE SETTING
6932 CMA 15 + 142 MAG	2.24+/-0.05 [.088+/- .002]	5.4
3076 CMA 18 + 182 MAG	1.84+/-0.05 [.072+/- .002]	9.5



- △ RECOMMENDED SPARE PARTS
- △ REFER TO SUPPLIED INSTRUCTION SHEET FOR CLEANING, LUBRICATION AND STORAGE OF APPLICATOR.
- △ CRIMP HEIGHT REFERENCE SETTING WAS THE SETTING USED WHEN THE APPLICATOR WAS QUALIFIED AT THE FACTORY. ADJUSTMENT MAY BE NECESSARY WHEN RUNNING APPLICATOR IN THE FIELD.
- 4. UNLESS SPECIFIED OTHERWISE TORQUE VALUES SHALL BE USED PER DOCUMENT, 101-35000.
- △ TERMINAL PITCH NOT COMPATIBLE WITH MECHANICAL FEED.
- △ WIRE COMBINATIONS ARE FOR SET UP ONLY.
- △ REFER TO CUSTOMER TERMINAL DRAWING FOR CRIMP HEIGHT FORMULA FOR SPECIFIC WIRE COMBINATIONS.
- △ TERMINAL LUBRICANT IS RECOMMENDED.

***WARNING**
ON INSTALLATION, SET WIRE DISC TO CRIMP HEIGHT REFERENCE SETTING FOR LARGEST WIRE SIZE. CRIMP HEIGHT REFERENCE SETTINGS GREATER THAN THE VALUE SHOWN MAY CAUSE DAMAGE TO THE CRIMP TOOLING, REFER TO THE INSTRUCTION SHEET FOR PROPER SETUP AND ADJUSTMENTS.

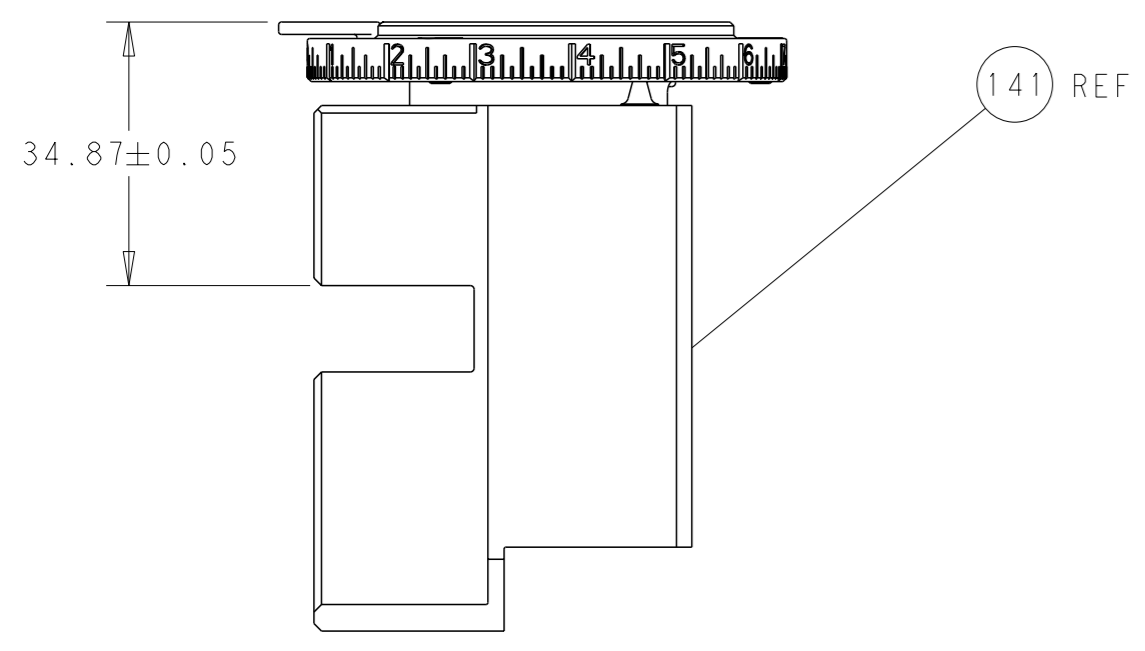
PACIFIC VERSION
Shown on sheets 3 of 4 & 4 of 4
(Atlantic version shown on sheets 1 of 4 & 2 of 4)

LOC	DIST	REVISIONS					
A	66	REV	LYR	DESCRIPTION	DATE	OWN	APVD
		-		SEE SHEET 1	-	-	-

-	1	1803078-6	SPACER, PRECISION	259
-	1	2844940-3	AIR FEED MODULE	238
-	1	2168083-5	SCR, SKT HD CAP, RoHS, M4 X 6.0	193
-	1	1-18028-0	WASHER, FLAT, REG M8	192
-	2	1-2168083-1	SCR, SKT HD CAP, RoHS, M3 X 6	191
-	4	2079383-9	SCR, BHSC, RoHS (M6 X 20)	186
-	REF	994970-2	COUNTER, MAGNETIC	164
-	1	2119641-2	FEED CAM, AIR FEED	152
-	1	2168083-8	SCR, SKT HD CAP, RoHS, M4 X 16	144
-	1	2119655-6	APPLICATOR BASIC ASSEMBLY, EF	141
-	1	1803518-2	RAM ASSEMBLY, EF PACIFIC	140
-	1	2119955-2	ASSY, LUBRICATOR, END FEED	84
-	1	455888-5	SPACER, CRIMPER	82
-	1	1803607-4	DOCUMENTATION PACKAGE	71
-	2	3-18032-3	SCR, SET, FLT PNT, M3 X 20.0	70
-	1	2119740-1	TAG, IDENTIFICATION	67
-	2	2168078-1	SCREW, DRIVE, RH, RoHS, 2 x .188	66
-	2	2168400-5	SHCS, LOW HEAD, RoHS, M4 X 20	64
-	1	5-18022-5	SCR, HEX HD CAP, M4 X 6.0	59
-	3	2168400-4	SHCS, LOW HEAD, RoHS, M4 X 8	57
-	2	5018030-1	NUT, HEX, REG, RoHS, M3	54
-	2	986965-8	NUT, LOCK, HEX, TORQUE (M4)	53
-	1	2063961-9	FEED FINGER	51
-	1	18023-9	SCR, SKT HD CAP M4 X 6.0	49
-	1	1803602-4	SCR, BHSC, RoHS (M8 X 30)	41
-	7	1-18028-2	WASHER, FLAT, REG M4	33
-	2	2-2168083-6	SCR, SKT HD CAP, RoHS, M4 X 18	31
-	2	1-2168083-0	SCR, SKT HD CAP, RoHS, M4 X 10	30
-	2	2168083-3	SCR, SKT HD CAP, RoHS, M4 X 12.0	29
-	1	2280150-1	STRIPPER	27
-	2	1-2168083-6	SCR, SKT HD CAP, RoHS, M4 X 35	25
-	1	2161922-4	PLATE, STRIP GUIDE	24
-	1	240825-1	PLATE, STRIP HOLD DOWN	23
-	2	2-22281-3	SPRING, COMPRESSION	22
-	1	1633168-2	ARM, STOCK DRAG	21
-	1	464452-6	DRAG, STOCK	20
-	2	1-1901259-5	GUIDE, LOWER STRIP	18
-	1	679864-3	PLATE, TOOLING	12
-	1	679860-7	PLATE, REAR SHEAR	11
-	-	-	-	10
-	1	690619-9	PLATE, RETAINING	9
-	1	1803450-3	ANVIL, AMPLIVAR SPLICE	8
-	1	2280112-1	BLADE, SHEAR	7
-	-	-	-	6
-	-	-	-	5
-	-	-	-	4
-	-	-	-	3
-	-	-	-	2
-	1	2280099-6	CRIMPER, WIRE, BLUNT, AMPLIVAR	1
-	77-22	PART NO	DESCRIPTION	ITEM NO

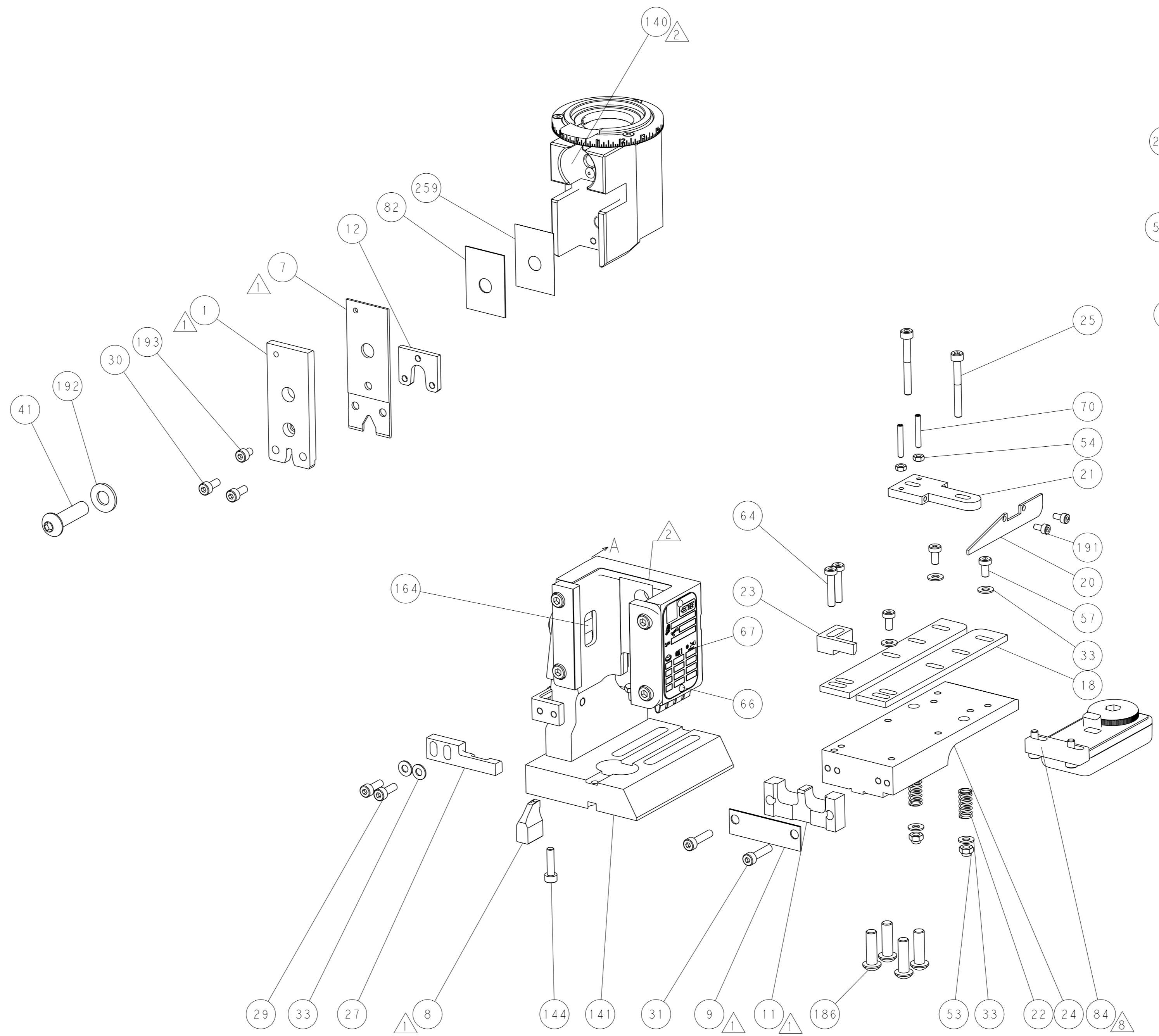
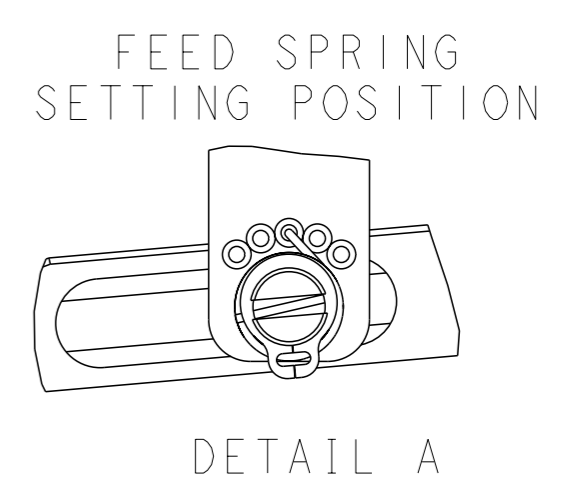
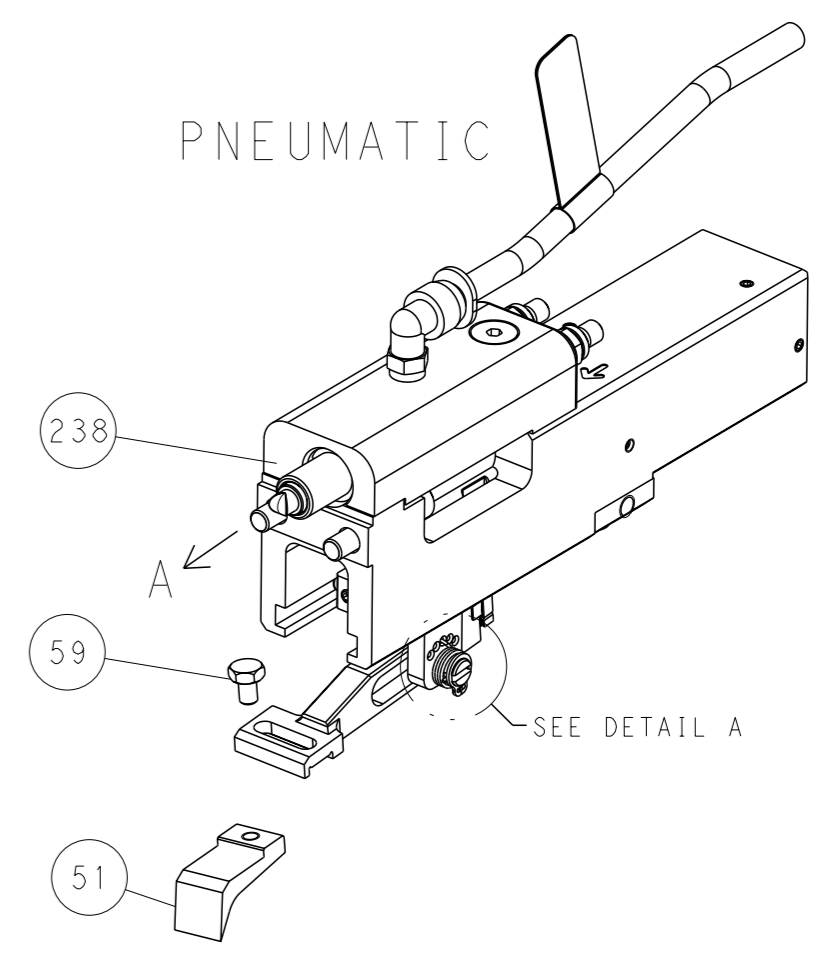
DIMENSIONS:		TOLERANCES UNLESS OTHERWISE SPECIFIED:		OWN: M. HERR 05DEC2016		TE Connectivity Harrisburg, PA 17105-3608	
mm	0 PLC ±	1 PLC ±	2 PLC ±	3 PLC ±	4 PLC ±	APVD: G. BAILEY 05DEC2016	NAME: Ocean End Feed Applicator
MATERIAL:		FINISH:		WEIGHT:		SCALE: 1:1 SHEET 3 OF 4 REV D	
Customer Accessible Production Drawing		SCALE: 1:1		SHEET 3 OF 4		REV D	

LOC	DIST	REVISIONS			
A	66	REV	DATE	OWN	APVD
		-	SEE SHEET 1	-	-

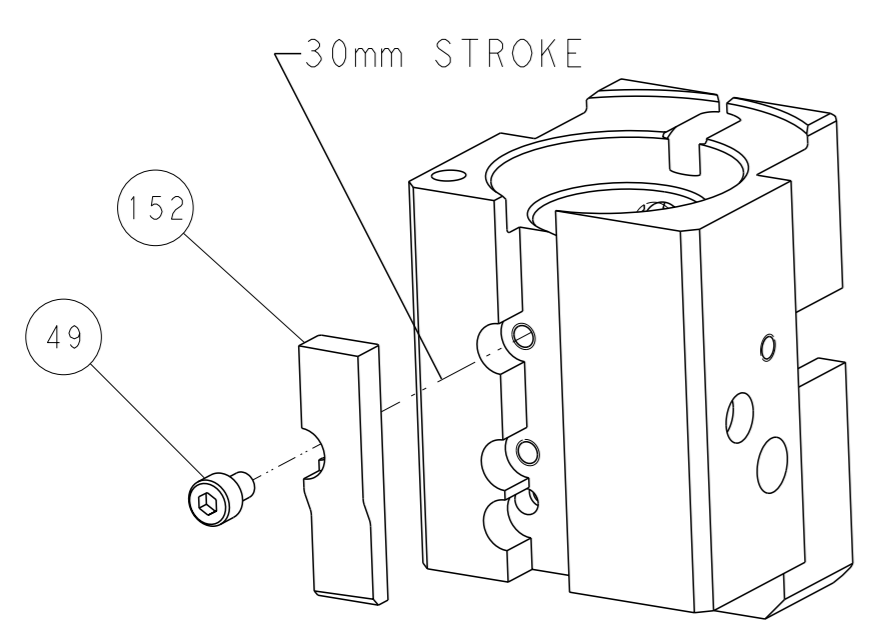


RAM SET-UP

FEED TYPE



CAM POSITION



AIR FEED

PACIFIC VERSION
 Shown on sheets 3 of 4 & 4 of 4
 (Atlantic version shown on sheets 1 of 4 & 2 of 4)

<small>THIS DRAWING IS A CONTROLLED DOCUMENT FROM TYCO ELECTRONICS CORPORATION. IT IS SUBJECT TO CHANGE AND THE CONTROLLING ENGINEERING ORGANIZATION SHOULD BE CONTACTED FOR THE LATEST REVISION.</small>		OWN: M. HERR CHK: G. BAILEY APVD: G. BAILEY PRODUCT SPEC:	05DEC2016 05DEC2016 05DEC2016	NAME: Ocean End Feed Applicator SIZE: A1 SCALE: 1:1	RESTRICTED TO:
DIMENSIONS: mm TOLERANCES UNLESS OTHERWISE SPECIFIED: 0 PLC ± 1 PLC ± 2 PLC ± 3 PLC ± 4 PLC ± ANGLES FINISH *	WEIGHT:	CAGE CODE: 00779 DRAWING NO: 2150228	SHEET: 4 OF: 4 REV: D	CUSTOMER ACCESSIBLE PRODUCTION DRAWING	