

PART NUMBER	REVISION	DESCRIPTION	FEED TYPE
2150230-1	C	FINE CRIMP HEIGHT ADJUST	MECHANICAL
2150230-2	C	FINE CRIMP HEIGHT ADJUST	PNEUMATIC
7-2150230-7	A	CRIMP TOOLING KIT	-

ATLANTIC VERSION TERMINATOR  
INTERFACE ADAPTER

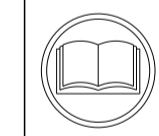


APPLICATOR DATA		
CRIMP	SIZE	TYPE
WIRE	2.54 mm [.100]	F
INSUL	-	-

APPLICATOR INSTRUCTIONS 408-35043

TERMINAL DATA: TE TERMINAL TE CRIMP SPECIFICATION			
TERMINAL NAME: AUTOM. WIRE -PIN			
WIRE STRIP LENGTH		INSULATION DIAMETER RANGE	
8.14-9.16 mm [.320-.361 IN]		-	
TERMINAL APPLICATION SPECIFICATION		114-2088	-
TERMINALS APPLIED			
TE TERMINAL	TE TERMINAL	TE TERMINAL	TE TERMINAL
926824-1	926824-4	926824-5	926824-8
926824-9	1-926824-0		

WIRE SIZE	CRIMP HEIGHT mm [INCH]	CRIMP HEIGHT REFERENCE SETTING
2.50mm2	2.09+/-0.05 [.082+/-0.002]	2.6
2.00mm2	1.91+/-0.05 [.075+/-0.002]	4.8
1.50mm2	1.73+/-0.05 [.068+/-0.002]	6.6
1.00mm2	1.55+/-0.05 [.061+/-0.002]	8.6



- 1 RECOMMENDED SPARE PARTS
- 2 REFER TO SUPPLIED INSTRUCTION SHEET FOR CLEANING, LUBRICATION AND STORAGE OF APPLICATOR.
- 3 CRIMP HEIGHT REFERENCE SETTING WAS THE SETTING USED WHEN THE APPLICATOR WAS QUALIFIED AT THE FACTORY. ADJUSTMENT MAY BE NECESSARY WHEN RUNNING APPLICATOR IN THE FIELD.
- 4. UNLESS SPECIFIED OTHERWISE TORQUE VALUES SHALL BE USED PER DOCUMENT, 101-35000.

**\*WARNING**  
ON INSTALLATION, SET WIRE DISC TO CRIMP HEIGHT REFERENCE SETTING FOR LARGEST WIRE SIZE. CRIMP HEIGHT REFERENCE SETTINGS GREATER THAN THE VALUE SHOWN MAY CAUSE DAMAGE TO THE CRIMP TOOLING. REFER TO THE INSTRUCTION SHEET FOR PROPER SETUP AND ADJUSTMENTS.

LOC	DIST	REVISIONS					
A	66	P	LTN	DESCRIPTION	DATE	DWN	APVD
		A		RELEASE	27AUG2012	L. Z	S. X
		B		ECR-22-161440	15DEC2022	JWC	TE
		C		ECR-24-208209	08MAY2024	TB	TE

-	1	-	2119641-1	FEED CAM, AIR FEED	248	
-	-	1	2119580-1	MECHANICAL FEED ASSEMBLY	239	
-	1	-	2844940-3	AIR FEED MODULE	238	
-	REF	REF	994970-2	COUNTER, MAGNETIC	164	
-	1	1	455888-5	SPACER, CRIMPER	82	
-	1	1	1803607-4	DOCUMENTATION PACKAGE	71	
-	2	2	2-18032-2	SCR, SET, FLT PNT, M3 X 10.0	70	
-	1	1	2119740-1	TAG, IDENTIFICATION	67	
-	2	2	2168078-1	SCREW, DRIVE, RH, RoHS, 2 x .188	66	
-	2	2	2168400-5	SHCS, LOW HEAD, RoHS, M4 X 20	64	
-	1	1	2168083-2	SCR, SKT HD CAP, RoHS, M4 X 8.0	60	
-	1	1	5-18022-5	SCR, HEX HD CAP, M4 X 6.0	59	
-	-	1	2063961-1	FEED FINGER	58	
-	3	3	2168400-4	SHCS, LOW HEAD, RoHS, M4 X 8	57	
-	2	2	5018030-1	NUT, HEX, REG, RoHS, M3	54	
-	2	2	986965-8	NUT, LOCK, HEX, TORQUE (M4)	53	
-	1	-	2063961-1	FEED FINGER	51	
-	1	2	18023-9	SCR, SKT HD CAP M4 X 6.0	49	
-	-	1	2119652-1	FEED CAM, PRE FEED	48	
-	-	1	2119653-1	FEED CAM, POST FEED	47	
-	1	1	2119655-5	APPLICATOR BASIC ASSEMBLY, EF	46	
-	1	1	1803517-2	RAM ASSEMBLY, EF ATLANTIC	44	
-	1	1	1803602-4	SCR, BHSC, RoHS (M8 X 30)	41	
-	7	7	1-18028-2	WASHER, FLAT, REG M4	33	
-	2	2	2168083-9	SCR, SKT HD CAP, RoHS, M4 X 20	31	
-	2	2	1-2168083-0	SCR, SKT HD CAP, RoHS, M4 X 10	29	
-	1	1	240639-1	STRIPPER (MACHINING)	27	
-	2	2	1-2168083-5	SCR, SKT HD CAP, RoHS, M4 X 30	25	
-	1	1	1752371-1	PLATE, STRIP GUIDE	24	
-	1	1	240825-4	PLATE, STRIP HOLD DOWN	23	
-	2	2	2-22281-3	SPRING, COMPRESSION	22	
-	1	1	1803292-4	DRAG	20	
-	2	2	1901259-4	GUIDE, LOWER STRIP	18	
-	4	4	1-2079383-1	SCR, BHSC, RoHS (M6 X 12)	17	
-	1	1	240644-1	PLATE, REAR SHEAR	11	
-	2	2	240645-3	SPACER, SHEAR PLATE	10	
-	1	1	690619-4	PLATE, RETAINING	9	
-	1	1	1-690618-3	ANVIL, SPLICE TYPE	8	
-	1	1	459722-3	BLADE, SHEAR	7	
-	-	-	-	-	3	
-	-	-	-	-	2	
-	1	1	1	4-459736-1	CRIMPER, WIRE	1

DIMENSIONS:		TOLERANCES UNLESS OTHERWISE SPECIFIED:		MATERIAL:		FINISH:	
mm	0 PLC ±	1 PLC ±	2 PLC ±	3 PLC ±	4 PLC ±	ANGLES ±	FINISH ±
MATERIAL				WEIGHT		SCALE	
-				-		1:1	

ITEM NO	DESCRIPTION	DATE	BY	CHK	APPV
77-2-1	PART NO	29JUN2012	L. ZHANG		
	DESCRIPTION	29JUN2012	L. ZHANG		
		29JUN2012	S. XI		

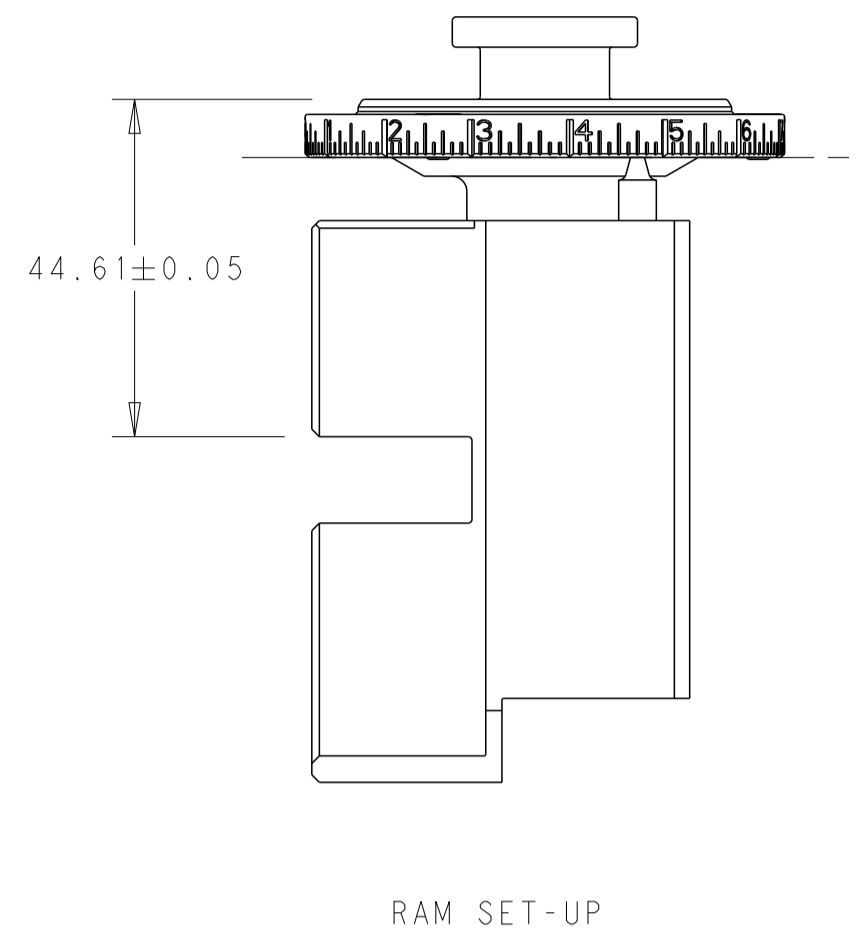
TE Connectivity  
Harrisburg, PA 17105-3608

Ocean End Feed  
Applicator

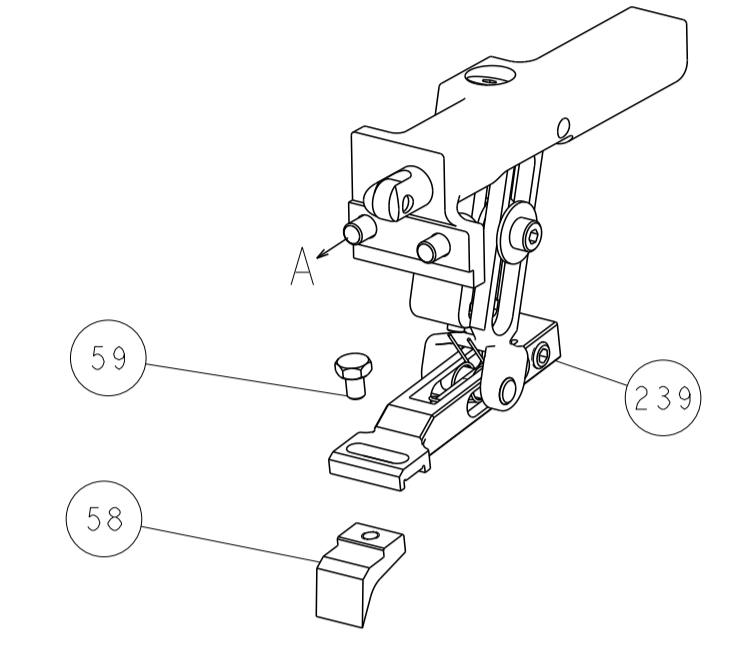
SIZE: A1 CAGE CODE: 00779 DRAWING NO: 2150230 RESTRICTED TO: -

CUSTOMER ACCESSIBLE PRODUCTION DRAWING SCALE: 1:1 SHEET 1 OF 4 REV: C

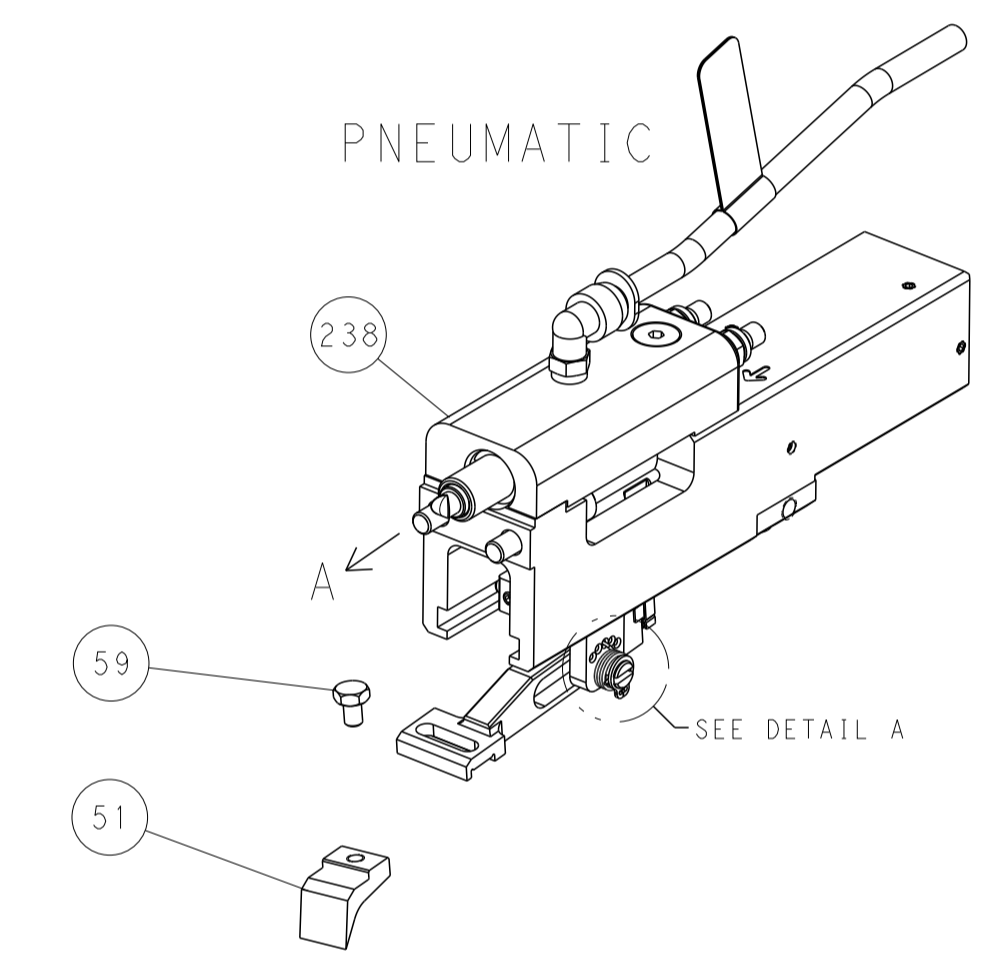
LOC	DIST	REVISIONS			
P	LTN	DESCRIPTION	DATE	DMN	APVD
A	66	SEE SHEET 1	-	-	-



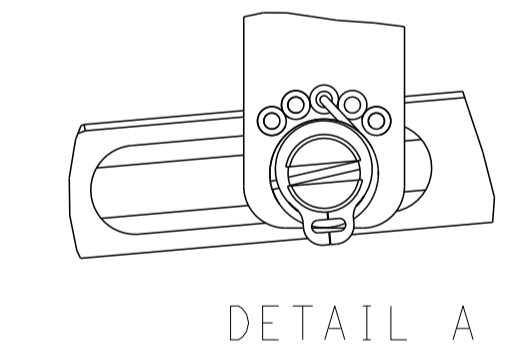
# FEED TYPE MECHANICAL



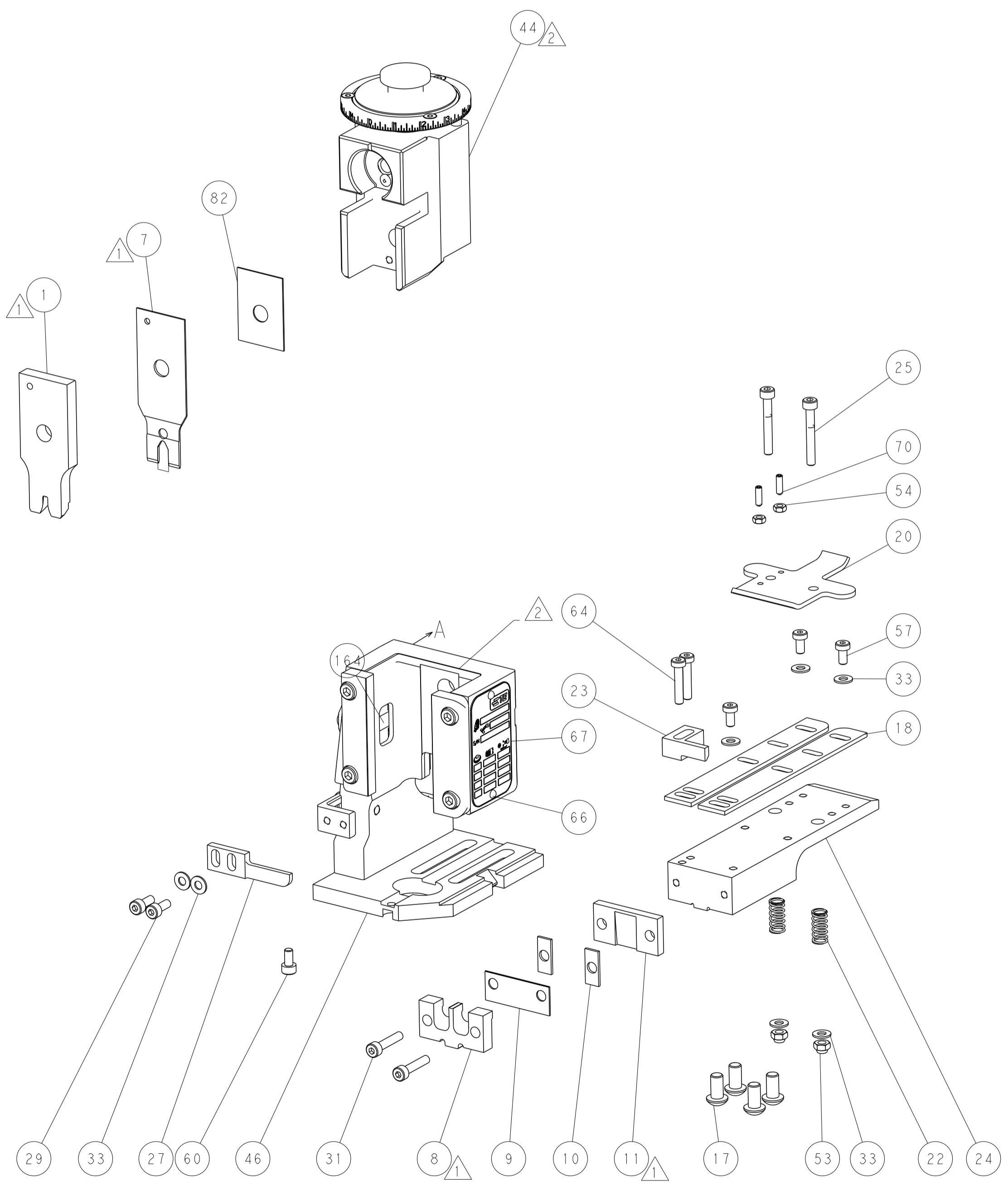
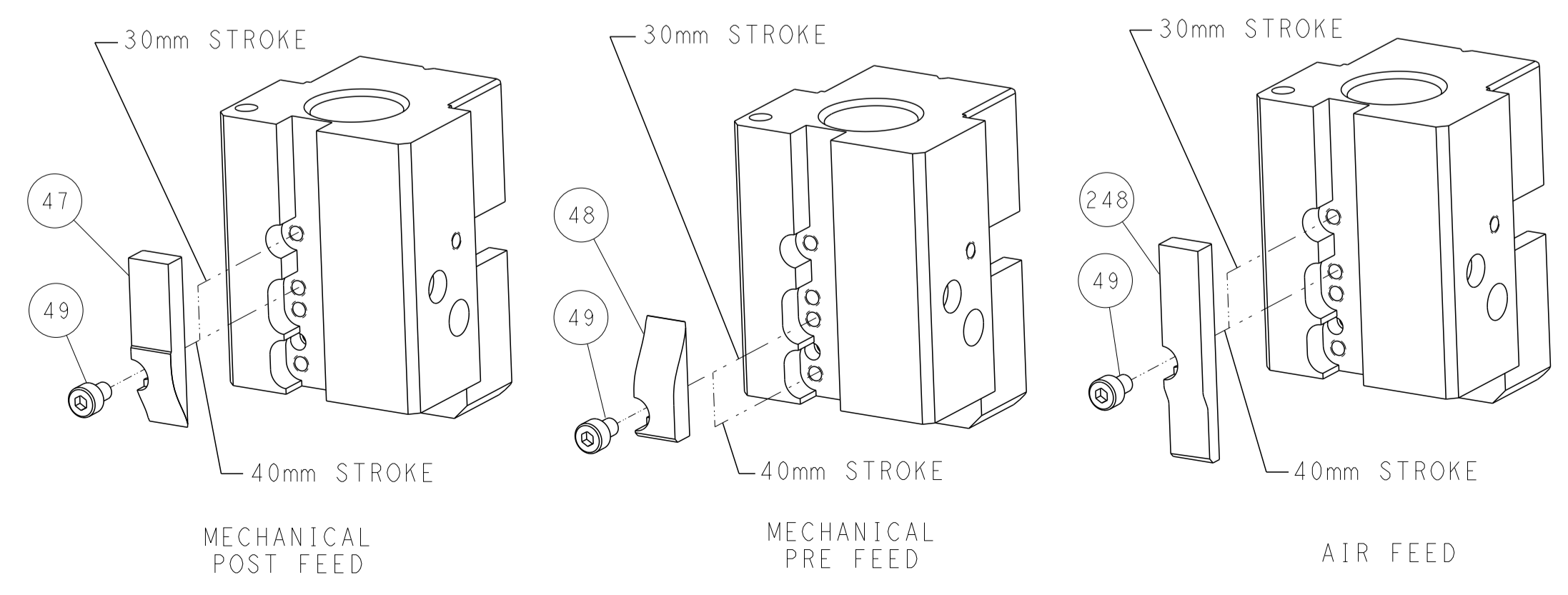
# PNEUMATIC



# FEED SPRING SETTING POSITION



# CAM POSITIONS



DIMENSIONS: mm 		TOLERANCES UNLESS OTHERWISE SPECIFIED: 0 PLC ± 1 PLC ± 2 PLC ± 3 PLC ± 4 PLC ± ANGLES ± FINISH		DWN L. ZHANG 29 JUN 2012 CHK L. ZHANG 29 JUN 2012 APVD S. XI 29 JUN 2012		TE Connectivity Harrisburg, PA 17105-3608	
MATERIAL:		WEIGHT:		NAME: Ocean End Feed Applicator		SIZE: A1 CAGE CODE: 00779 DRAWING NO: C=2150230	
CUSTOMER ACCESSIBLE PRODUCTION DRAWING				SCALE: 1:1		SHEET 2 OF 4 REV C	