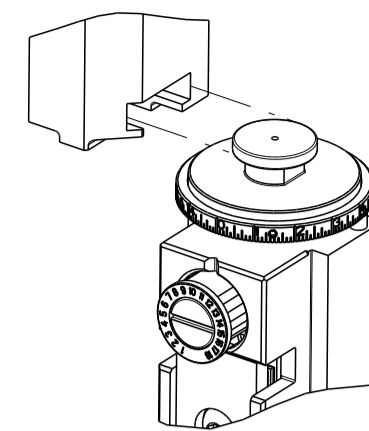


PART NUMBER	REVISION	DESCRIPTION	FEED TYPE
2150445-1	B	FINE CRIMP HEIGHT ADJUST	MECHANICAL
2150445-2	B	FINE CRIMP HEIGHT ADJUST	PNEUMATIC
7-2150445-1	B	MECHANICAL AND CRIMP TOOLING KIT	MECHANICAL
7-2150445-2	B	PNEUMATIC AND CRIMP TOOLING KIT	PNEUMATIC
7-2150445-7	A	CRIMP TOOLING KIT	-

ATLANTIC VERSION TERMINATOR INTERFACE ADAPTER



APPLICATOR DATA		
CRIMP	SIZE	TYPE
WIRE	3.56 mm [.140]	F
INSUL	3.56 mm [.140]	F
APPL INSTRUCTIONS 408-35043		

TERMINAL DATA: ECUBEDO TERMINAL TE CRIMP SPECIFICATION			
TERMINAL NAME: TERMINAL TORNILLO Ø4.5 A2.5-2.5			
WIRE STRIP LENGTH		INSULATION DIAMETER RANGE	
5.80-6.20 mm [.228-.244 IN]		Ø3.00-4.30 mm [.118-.169 IN]	
TERMINAL APPLICATION SPECIFICATION	NONE		
TERMINALS APPLIED			
TE TERMINAL	ECUBEDO TERMINAL	TE TERMINAL	ECUBEDO TERMINAL
3488.00	2113480-2	3488.02	2113480-1

WIRE SIZE	CRIMP HEIGHT mm [INCH]	CRIMP HEIGHT REFERENCE SETTING
2.50mm2	2.14 +/- 0.05 [.084 +/- .002]	8.8
2.00mm2	2.03 +/- 0.05 [.080 +/- .002]	9.9
1.50mm2	1.92 +/- 0.05 [.076 +/- .002]	11.0

- RECOMMENDED SPARE PARTS
- REFER TO SUPPLIED INSTRUCTION SHEET FOR CLEANING, LUBRICATION AND STORAGE OF APPLICATOR.
- APPLY PART NUMBER 2-23419-6 LOCTITE TO THREADS OF ITEM 242. APPLY PART NUMBER 1-23419-5 LOCTITE TO THREADS OF ITEM 180.
- CRIMP HEIGHT REFERENCE SETTING WAS THE SETTING USED WHEN THE APPLICATOR WAS QUALIFIED AT THE FACTORY. ADJUSTMENT MAY BE NECESSARY WHEN RUNNING APPLICATOR IN THE FIELD.
- UNLESS SPECIFIED OTHERWISE TORQUE VALUES SHALL BE USED PER DOCUMENT, 101-35000.

**\*WARNING**  
ON INSTALLATION, SET WIRE DISC TO CRIMP HEIGHT REFERENCE SETTING FOR LARGEST WIRE SIZE. CRIMP HEIGHT REFERENCE SETTINGS GREATER THAN THE VALUE SHOWN MAY CAUSE DAMAGE TO THE CRIMP TOOLING. REFER TO THE INSTRUCTION SHEET FOR PROPER SETUP AND ADJUSTMENTS.

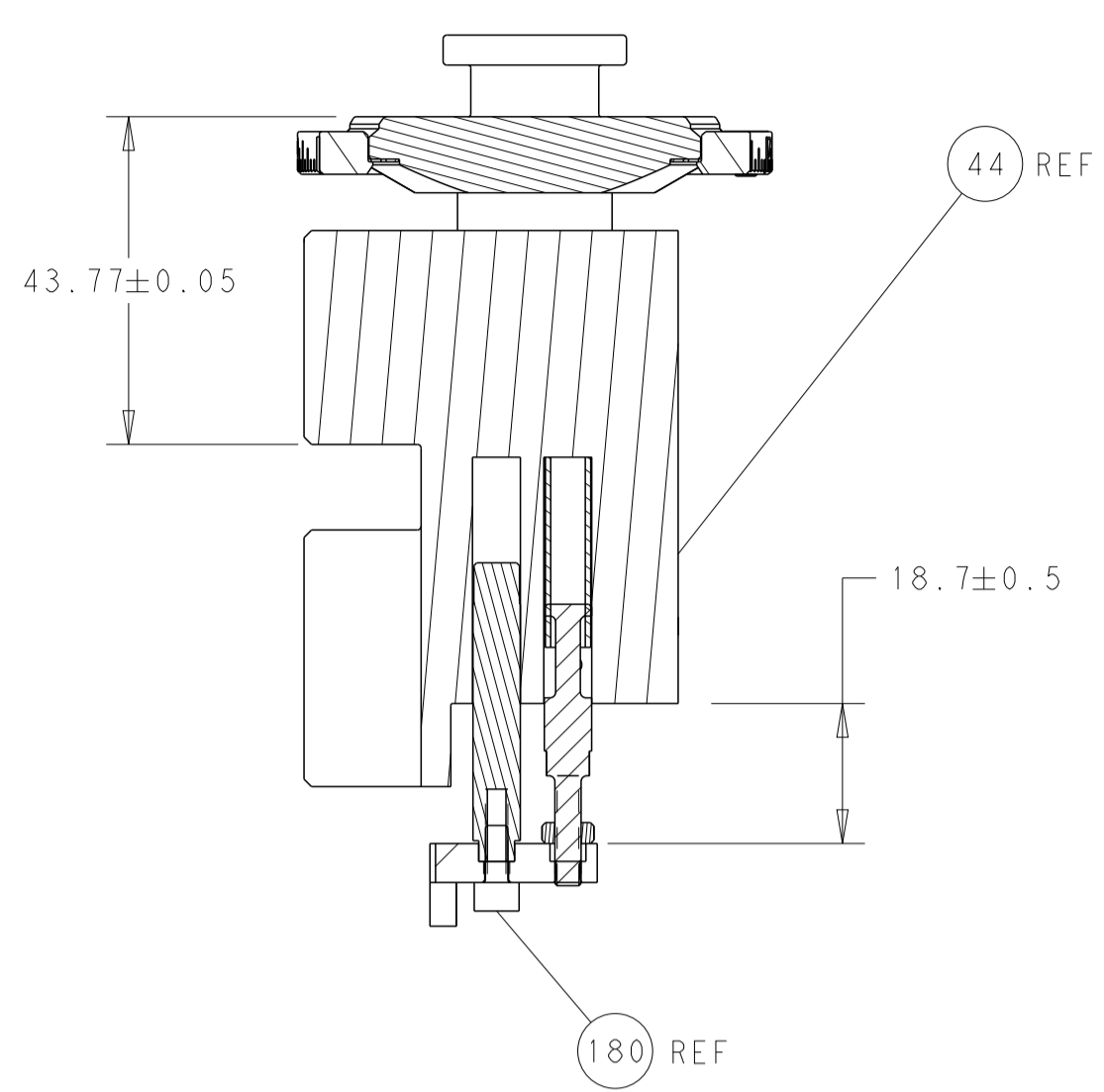
ATLANTIC VERSION  
Shown on sheets 1 of 4 & 2 of 4  
(Pacific version shown on sheets 3 of 4 & 4 of 4)

LOC	DIST	REVISIONS					
A	66	P	LTN	DESCRIPTION	DATE	OWN	APVD
		A		RELEASED	06JAN2015	EAO	CCL
		B		ECR-19-004643	22MAR2019	TB	CT

-	1	-	1	-	2119640-1	PUSH ROD, AIR FEED	250	
-	1	-	1	-	1803259-1	BUSHING, FLANGED	249	
-	1	-	1	-	2119641-1	FEED CAM, AIR FEED	248	
-	1	1	1	1	2119082-1	CAM, SNAIL, INSULATION ADJUSTMENT	244	
-	1	1	1	1	2079764-1	WASHER, WAVE SPRING, CREST-TO-CREST	243	
3	-	1	1	1	2119083-1	RETAINER, INSULATION DIAL	242	
-	-	1	-	1	2119580-1	MECHANICAL FEED ASSEMBLY	239	
-	1	-	1	-	2063440-1	AIR FEED MODULE	238	
-	1	1	1	1	1-18028-0	WASHER, FLAT, REG M8	192	
3	-	1	1	1	4-1752354-1	STANDOFF, HOLD-DOWN	180	
-	1	1	1	1	6-993111-6	PIN, SLOTTED SPRING 3.0 X 14.0	177	
-	1	1	1	1	8-22280-7	SPRING, COMPRESSION	176	
-	1	1	1	1	1752353-2	GUIDE PIN, HOLDDOWN	175	
-	1	1	1	1	1901680-2	GUIDE PIN, HOLDDOWN	174	
-	2	-	2	-	21045-3	RING, RETAIN, EXTERN, 3/16 CRESCENT	172	
-	REF	REF	REF	REF	994970-2	COUNTER, MAGNETIC	164	
-	1	-	1	-	240638-1	SPRING, FEED FINGER	163	
-	1	-	1	-	3-23627-7	PIN, RETAIN, GRVD, 3/16 X .854	137	
-	1	1	1	1	455888-5	SPACER, CRIMPER	82	
-	1	1	1	1	2119791-5	DEPRESSOR, WIRE	73	
-	1	1	1	1	1803607-2	DOCUMENTATION PACKAGE	71	
-	2	2	2	2	2-18032-2	SCR, SET, FLT PNT, M3 X 10.0	70	
-	1	1	1	1	2119943-1	WASHER, SPACER	69	
-	1	1	1	1	2119740-1	TAG, IDENTIFICATION	67	
-	2	2	2	2	2168078-1	SCREW, DRIVE, RH, RoHS, 2 x .188	66	
-	1	1	1	1	1-1901681-3	HOLDDOWN, TERMINAL	65	
-	1	1	1	1	2168083-2	SCR, SKT HD CAP, RoHS, M4 X 8.0	60	
-	-	1	-	1	5-18022-5	SCR, HEX HD CAP, M4 X 6.0	59	
-	-	1	-	1	2063961-1	FEED FINGER	58	
-	4	4	4	4	2168400-4	SHCS, LOW HEAD, RoHS, M4 X 8	57	
-	2	2	2	2	1-2168083-4	SCR, SKT HD CAP, RoHS, M4 X 5	56	
-	2	2	2	2	5018030-1	NUT, HEX, REG, RoHS, M3	54	
-	2	2	2	2	986965-8	NUT, LOCK, HEX, TORQUE (M4)	53	
-	1	1	1	1	1-5018030-0	NUT, HEX, REG, RoHS, M3.5	52	
-	1	-	1	-	2119792-1	PAWL, EF, AIR	51	
-	1	2	1	2	18023-9	SCR, SKT HD CAP M4 X 6.0	49	
-	-	1	-	1	2119652-1	FEED CAM, PRE FEED	48	
-	-	1	-	1	2119653-1	FEED CAM, POST FEED	47	
-	1	1	1	1	2119655-5	APPLICATOR BASIC ASSEMBLY, EF	46	
-	1	1	1	1	1803517-1	RAM ASSEMBLY, EF ATLANTIC	44	
-	1	1	1	1	1803602-1	SCR, BHSC, RoHS (M8 X 25)	41	
-	8	8	8	8	1-18028-2	WASHER, FLAT, REG M4	33	
-	2	2	2	2	2168083-9	SCR, SKT HD CAP, RoHS, M4 X 20	31	
-	2	2	2	2	2168083-2	SCR, SKT HD CAP, RoHS, M4 X 8.0	29	
-	1	1	1	1	240639-4	STRIPPER (MACHINING)	27	
-	2	2	2	2	1-2168083-5	SCR, SKT HD CAP, RoHS, M4 X 30	25	
-	1	1	1	1	1752371-5	PLATE, STRIP GUIDE	24	
-	2	2	2	2	2-22281-3	SPRING, COMPRESSION	22	
-	1	1	1	1	1803292-1	DRAG	20	
-	2	2	2	2	1901259-7	GUIDE, LOWER STRIP	18	
-	4	4	4	4	1-2079383-1	SCR, BHSC, RoHS (M6 X 12)	17	
-	1	1	1	1	1752360-1	SPACER, HOLD-DOWN	13	
1	-	1	-	1	240644-1	PLATE, REAR SHEAR	11	
-	-	-	-	-	-	-	10	
1	-	1	-	1	690482-4	PLATE, FRONT SHEAR	9	
1	2	2	1	1	4-1803001-9	ANVIL, COMBINATION, END FEED	8	
1	-	1	-	1	1-2217206-1	BLADE, SLUG	7	
-	-	-	-	-	-	-	6	
-	1	1	1	1	6-240641-7	SPACER	5	
-	1	1	1	1	238011-8	BLOCK, CRIMPER SPACER	4	
1	1	2	2	1	2-2119582-4	CRIMPER, INSULATION F PREMIUM	3	
-	-	-	-	-	-	-	2	
1	1	2	2	1	3-456411-2	CRIMPER, WIRE PREMIUM	1	
-	77	72	71	2	-1	PART NO	DESCRIPTION	ITEM NO

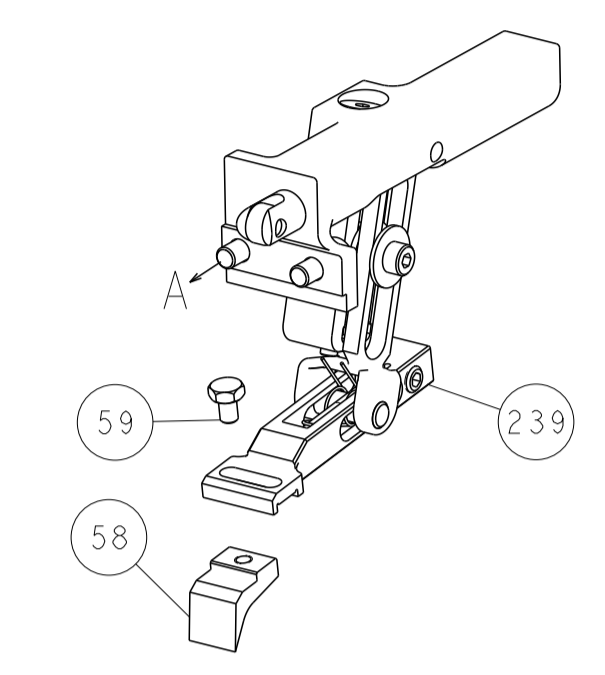
DIMENSIONS:		TOLERANCES UNLESS OTHERWISE SPECIFIED:		DRAWN		DATE		NAME	
mm	0 PLC ±	1 PLC ±	2 PLC ±	3 PLC ±	4 PLC ±	ANGLES ±	FINISH	EVERALDO	18JUN2014
								C. LIMA	18JUN2014
								APVD	
								C. LIMA	18JUN2014
								PRODUCT SPEC	
								APPLICATION SPEC	
								SIZE	CAGE CODE
								A1	00779
								Customer Accessible Production Drawing	SCALE
								1:1	SHEET
								1	OF
								4	REV
								B	

LOC	DIST	REV	DESCRIPTION	DATE	OWN	APVD
A	66		SEE SHEET 1			

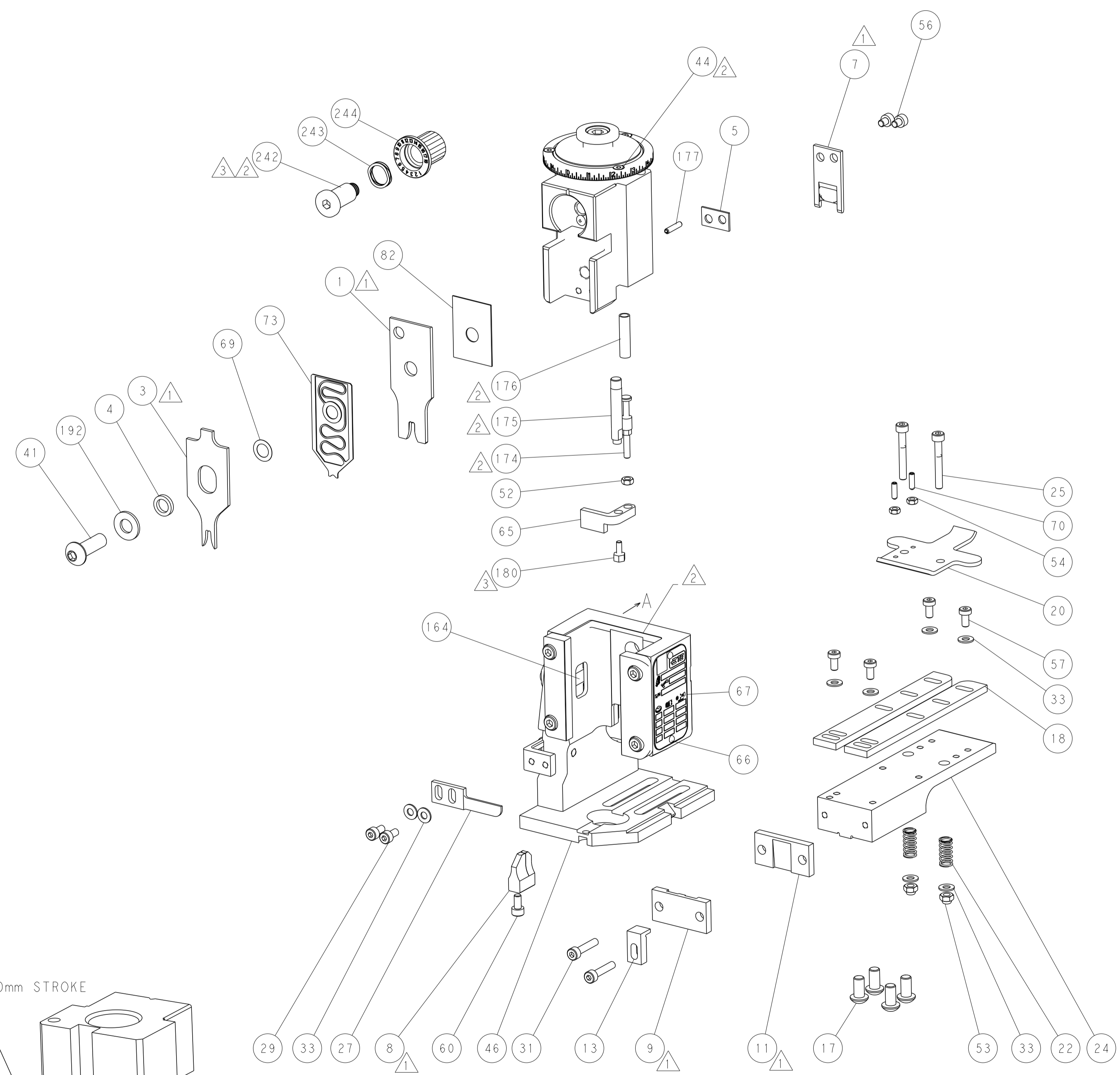
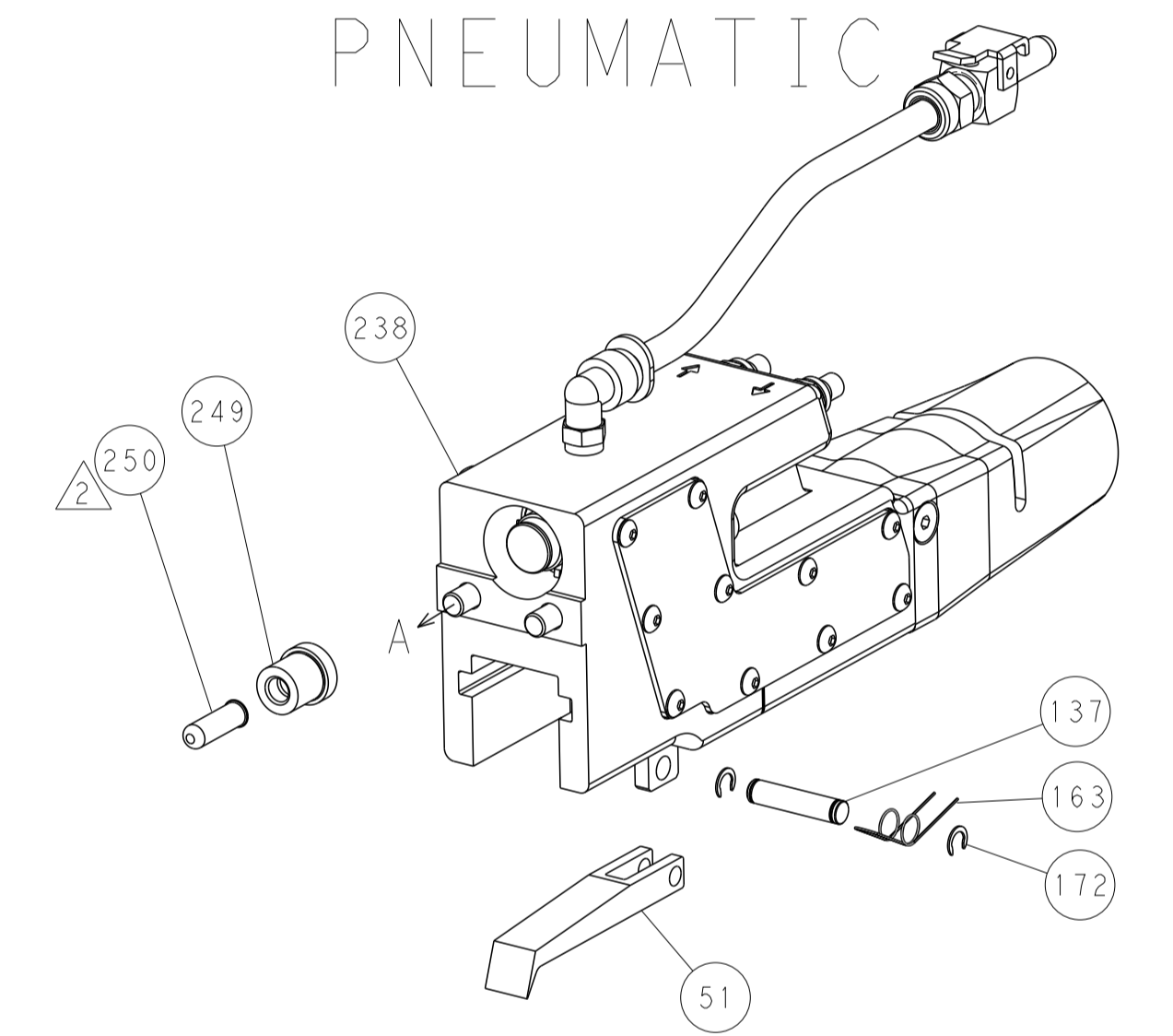


RAM AND HOLDDOWN SET-UP

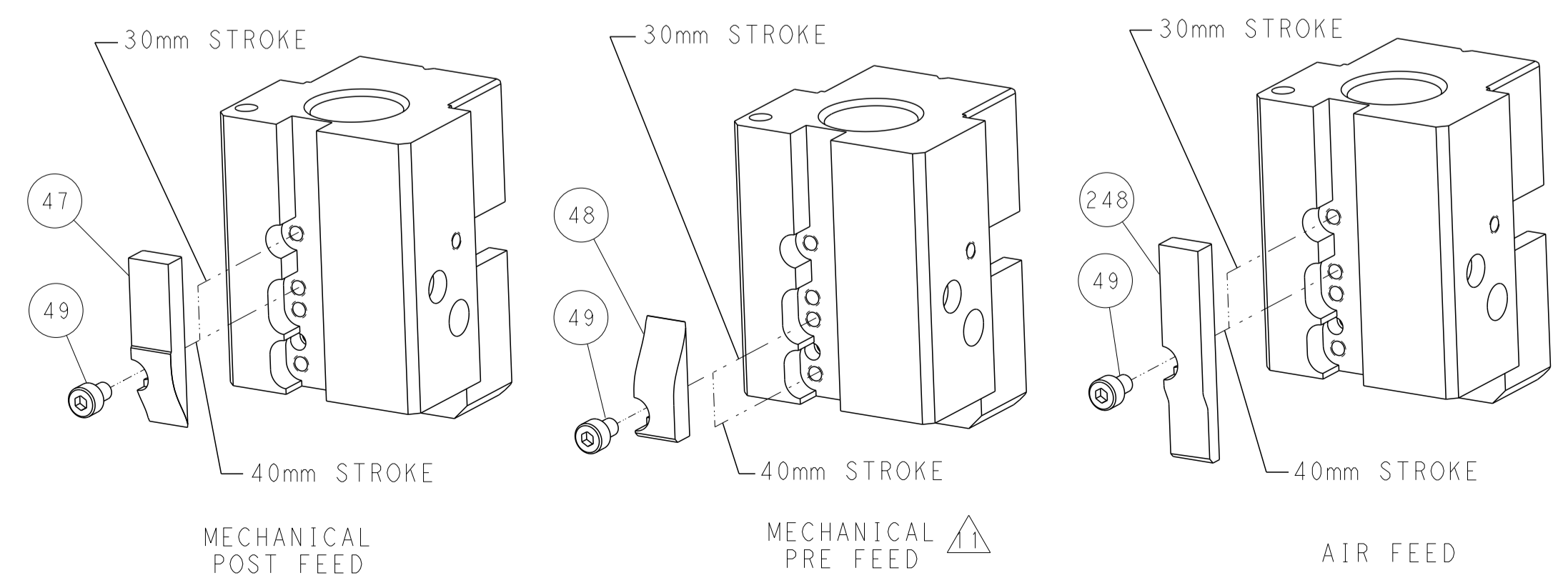
FEED TYPE  
MECHANICAL



PNEUMATIC



CAM POSITIONS



ATLANTIC VERSION  
 Shown on sheets 1 of 4 & 2 of 4  
 (Pacific version shown on sheets 3 of 4 & 4 of 4)

DIMENSIONS: mm 		TOLERANCES UNLESS OTHERWISE SPECIFIED: 0 PLC ± 1 PLC ± 2 PLC ± 3 PLC ± 4 PLC ± ANGLES ± FINISH ±		DWN EVERALDO 18JUN2014 CHK C. LIMA 18JUN2014 APVD C. LIMA 18JUN2014 PRODUCT SPEC APPLICATION SPEC WEIGHT Customer Accessible Production Drawing		NAME Ocean End Feed Applicator SIZE CAGE CODE DRAWING NO A1 00779 C=2150445 SCALE 1:1 SHEET 2 OF 4 REV B		RESTRICTED TO -	
SHEETS 3 & 4 ARE NOT REQUIRED FOR ATLANTIC VERSION									

PART NUMBER	REVISION	DESCRIPTION	FEED TYPE
2-2150445-1	B	FINE CRIMP HEIGHT ADJUST	MECHANICAL
2-2150445-2	B	FINE CRIMP HEIGHT ADJUST	PNEUMATIC
7-2150445-7	A	CRIMP TOOLING KIT	-

PACIFIC VERSION TERMINATOR  
INTERFACE ADAPTER



APPLICATOR DATA		
CRIMP	SIZE	TYPE
WIRE	3.56 mm [ .140 ]	F
INSUL	3.56 mm [ .140 ]	F
APPL INSTRUCTIONS 408-35043		

TERMINAL DATA: ECUBEDO TERMINAL TE CRIMP SPECIFICATION			
TERMINAL NAME: TERMINAL TORNILLO Ø4.5 A2.5-2.5			
WIRE STRIP LENGTH		INSULATION DIAMETER RANGE	
5.80-6.20 mm [ .228-.244 IN ]		Ø3.00-4.30 mm [ .118-.169 IN ]	
TERMINAL APPLICATION SPECIFICATION	NONE		
TERMINALS APPLIED			
TE TERMINAL	ECUBEDO TERMINAL	TE TERMINAL	ECUBEDO TERMINAL
3488.00	2113480-2	3488.02	2113480-1

WIRE SIZE	CRIMP HEIGHT mm [INCH]	CRIMP HEIGHT REFERENCE SETTING
2.50mm2	2.14 +/- 0.05 [ .084 +/- .002 ]	8.8
2.00mm2	2.03 +/- 0.05 [ .080 +/- .002 ]	9.9
1.50mm2	1.92 +/- 0.05 [ .076 +/- .002 ]	11.0



- RECOMMENDED SPARE PARTS
- REFER TO SUPPLIED INSTRUCTION SHEET FOR CLEANING, LUBRICATION AND STORAGE OF APPLICATOR.
- APPLY PART NUMBER 2-23419-6 LOCTITE TO THREADS OF ITEM 242. APPLY PART NUMBER 1-23419-5 LOCTITE TO THREADS OF ITEM 180.
- CRIMP HEIGHT REFERENCE SETTING WAS THE SETTING USED WHEN THE APPLICATOR WAS QUALIFIED AT THE FACTORY. ADJUSTMENT MAY BE NECESSARY WHEN RUNNING APPLICATOR IN THE FIELD.
- UNLESS SPECIFIED OTHERWISE TORQUE VALUES SHALL BE USED PER DOCUMENT, 101-35000.

**\*WARNING**  
ON INSTALLATION, SET WIRE DISC TO CRIMP HEIGHT REFERENCE SETTING FOR LARGEST WIRE SIZE. CRIMP HEIGHT REFERENCE SETTINGS GREATER THAN THE VALUE SHOWN MAY CAUSE DAMAGE TO THE CRIMP TOOLING. REFER TO THE INSTRUCTION SHEET FOR PROPER SETUP AND ADJUSTMENTS.

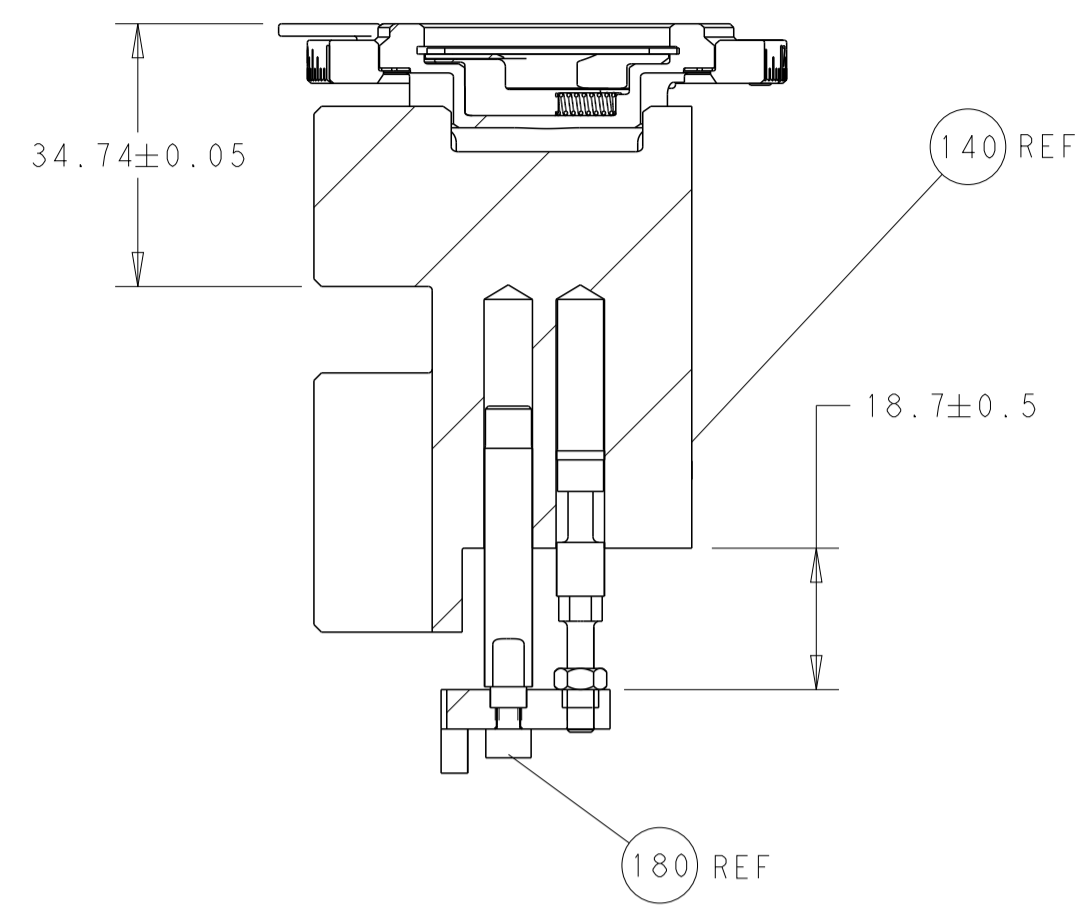
LOC	DIST	REVISIONS					
A	66	P	LTN	DESCRIPTION	DATE	OWN	APVD
-	-	-	-	SEE SHEET 1	-	-	-

-	1	-	-	2119640-1	PUSH ROD, AIR FEED	250
-	1	-	-	1803259-1	BUSHING, FLANGED	249
-	1	1	-	2119082-1	CAM, SNAIL, INSULATION ADJUSTMENT	244
-	1	1	-	2079764-1	WASHER, WAVE SPRING, CREST-TO-CREST	243
3	-	1	1	2119083-1	RETAINER, INSULATION DIAL	242
-	-	1	-	2119580-1	MECHANICAL FEED ASSEMBLY	239
-	1	-	-	2063440-1	AIR FEED MODULE	238
-	1	1	-	1-18028-0	WASHER, FLAT, REG M8	192
-	4	4	-	2079383-9	SCR, BHSC, RoHS (M6 X 20)	186
3	-	1	1	4-1752354-1	STANDOFF, HOLD-DOWN	180
-	1	1	-	6-993111-6	PIN, SLOTTED SPRING 3.0 X 14.0	177
-	1	1	-	8-22280-7	SPRING, COMPRESSION	176
-	1	1	-	1752353-2	GUIDE PIN, HOLDDOWN	175
-	1	1	-	1901680-2	GUIDE PIN, HOLDDOWN	174
-	2	-	-	21045-3	RING, RETAIN, EXTERN, 3/16 CRESCENT	172
-	REFREF	-	-	994970-2	COUNTER, MAGNETIC	164
-	1	-	-	240638-1	SPRING, FEED FINGER	163
-	1	-	-	2119641-2	FEED CAM, AIR FEED	152
-	1	1	-	2168083-8	SCR, SKT HD CAP, RoHS, M4 X 16	144
-	-	1	-	2119653-2	FEED CAM, POST FEED	142
-	1	1	-	2119655-6	APPLICATOR BASIC ASSEMBLY, EF	141
-	1	1	-	1803518-1	RAM ASSEMBLY, EF PACIFIC	140
-	1	-	-	3-23627-7	PIN, RETAIN, GRVD, 3/16 X .854	137
-	1	1	-	455888-5	SPACER, CRIMPER	82
-	1	1	-	2119791-5	DEPRESSOR, WIRE	73
-	1	1	-	1803607-2	DOCUMENTATION PACKAGE	71
-	2	2	-	2-18032-2	SCR, SET, FLT PNT, M3 X 10.0	70
-	1	1	-	2119943-1	WASHER, SPACER	69
-	1	1	-	2119740-1	TAG, IDENTIFICATION	67
-	2	2	-	2168078-1	SCREW, DRIVE, RH, RoHS, 2 x .188	66
-	1	1	-	1-1901681-3	HOLDDOWN, TERMINAL	65
-	-	1	-	5-18022-5	SCR, HEX HD CAP, M4 X 6.0	59
-	-	1	-	2063961-1	FEED FINGER	58
-	4	4	-	2168400-4	SHCS, LOW HEAD, RoHS, M4 X 8	57
-	2	2	-	1-2168083-4	SCR, SKT HD CAP, RoHS, M4 X 5	56
-	2	2	-	5018030-1	NUT, HEX, REG, RoHS, M3	54
-	2	2	-	986965-8	NUT, LOCK, HEX, TORQUE (M4)	53
-	1	1	-	1-5018030-0	NUT, HEX, REG, RoHS, M3.5	52
-	1	-	-	2119792-1	PAWL, EF, AIR	51
-	1	2	-	18023-9	SCR, SKT HD CAP M4 X 6.0	49
-	-	1	-	2119652-1	FEED CAM, PRE FEED	48
-	1	1	-	1803602-1	SCR, BHSC, RoHS (M8 X 25)	41
-	8	8	-	1-18028-2	WASHER, FLAT, REG M4	33
-	2	2	-	2168083-9	SCR, SKT HD CAP, RoHS, M4 X 20	31
-	2	2	-	2168083-2	SCR, SKT HD CAP, RoHS, M4 X 8.0	29
-	1	1	-	240639-4	STRIPPER (MACHINING)	27
-	2	2	-	1-2168083-5	SCR, SKT HD CAP, RoHS, M4 X 30	25
-	1	1	-	1752371-5	PLATE, STRIP GUIDE	24
-	2	2	-	2-22281-3	SPRING, COMPRESSION	22
-	1	1	-	1803292-1	DRAG	20
-	2	2	-	1901259-7	GUIDE, LOWER STRIP	18
-	1	1	-	1752360-1	SPACER, HOLD-DOWN	13
1	-	1	1	240644-1	PLATE, REAR SHEAR	11
-	-	-	-	-	-	10
-	1	1	-	690482-4	PLATE, FRONT SHEAR	9
1	1	1	-	4-1803001-9	ANVIL, COMBINATION, END FEED	8
1	-	1	1	1-2217206-1	BLADE, SLUG	7
-	-	-	-	-	-	6
-	1	1	-	6-240641-7	SPACER	5
-	1	1	-	238011-8	BLOCK, CRIMPER SPACER	4
1	1	1	-	2-2119582-4	CRIMPER, INSULATION F PREMIUM	3
-	-	-	-	-	-	2
1	1	1	-	3-456411-2	CRIMPER, WIRE PREMIUM	1
-	77	22	21	PART NO	DESCRIPTION	ITEM NO

PACIFIC VERSION  
Shown on sheets 3 of 4 & 4 of 4  
(Atlantic version shown on sheets 1 of 4 & 2 of 4)

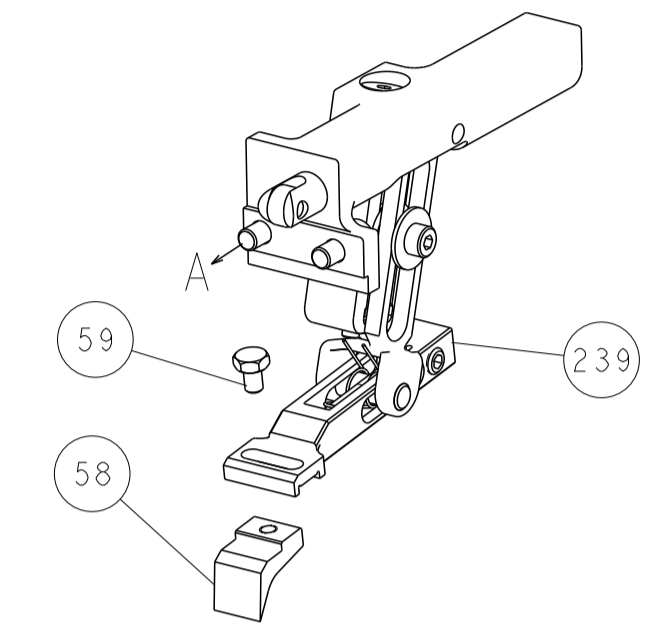
DIMENSIONS:		TOLERANCES UNLESS OTHERWISE SPECIFIED:		DRAWING NO	
mm	0 PLC ±	1 PLC ±	2 PLC ±	3 PLC ±	4 PLC ±
	ANGLES ±	FINISH ±			
MATERIAL		FINISH		WEIGHT	
				A1 00779 ©=2150445	
Customer Accessible Production Drawing				SCALE	SHEET 3 OF 4
				REV	B

LOC		DIST		REVISIONS			
A	66	P	LTM	DESCRIPTION	DATE	OWN	APVD
		-		SEE SHEET 1			

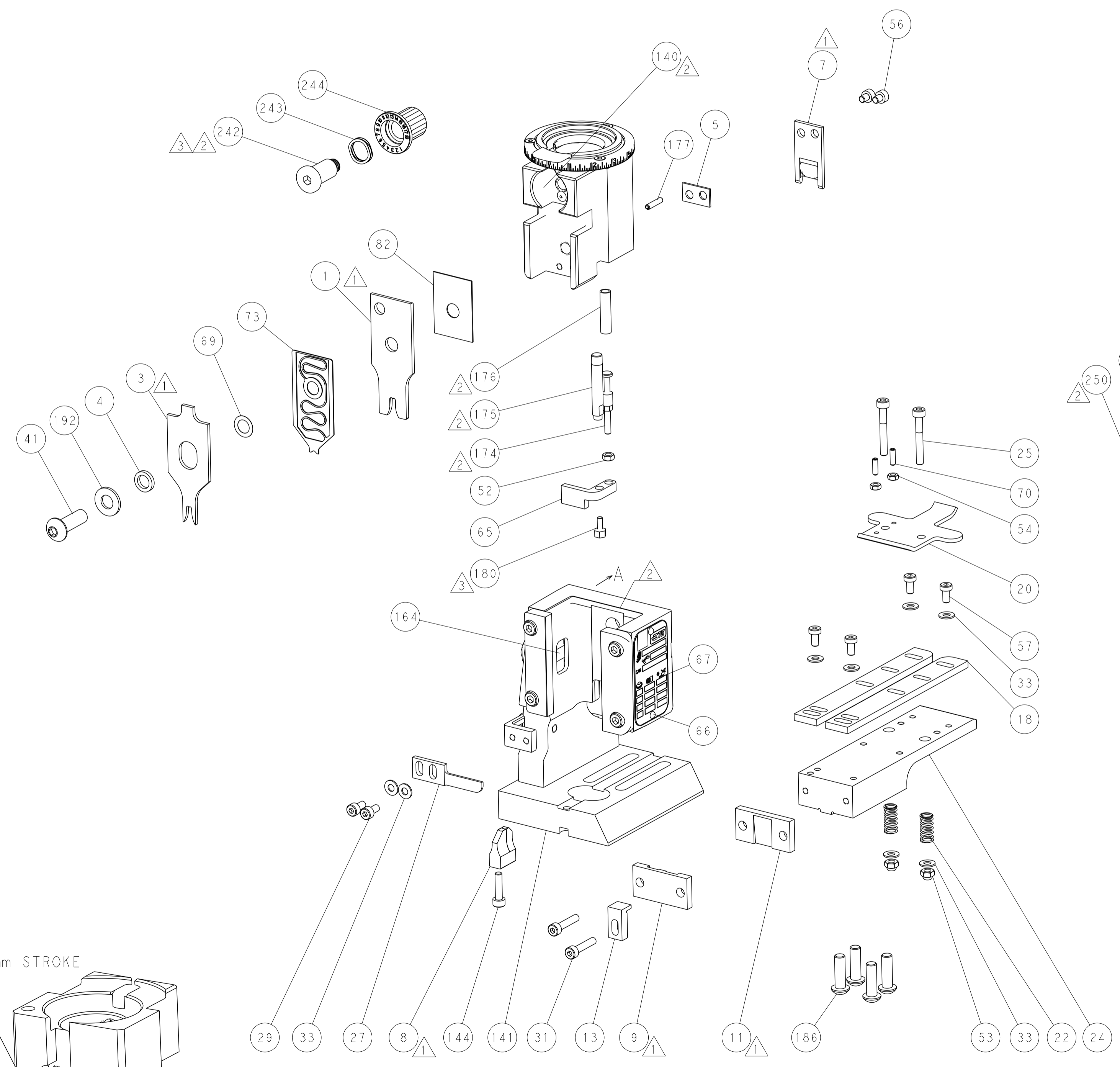
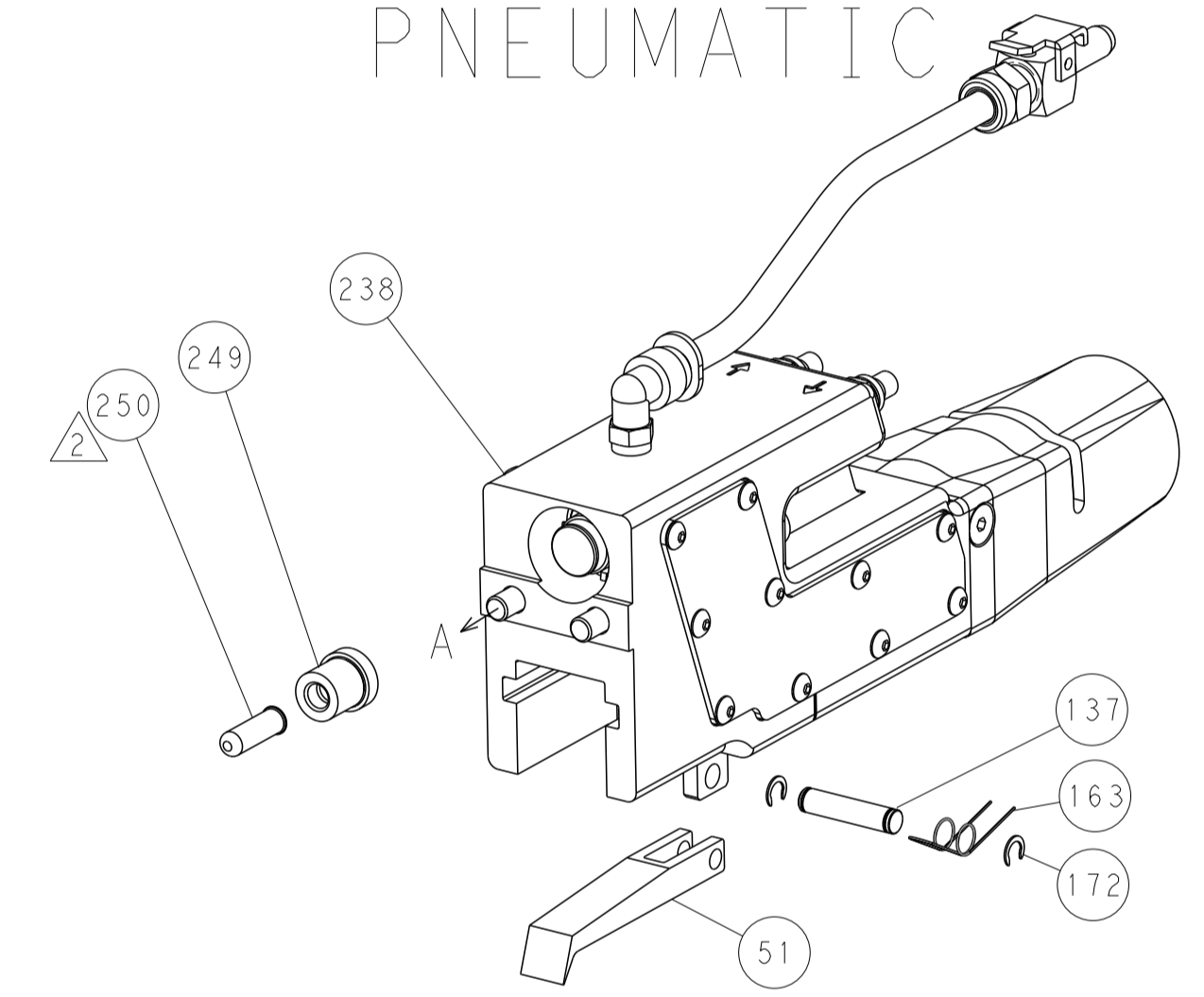


RAM AND HOLDDOWN SET-UP

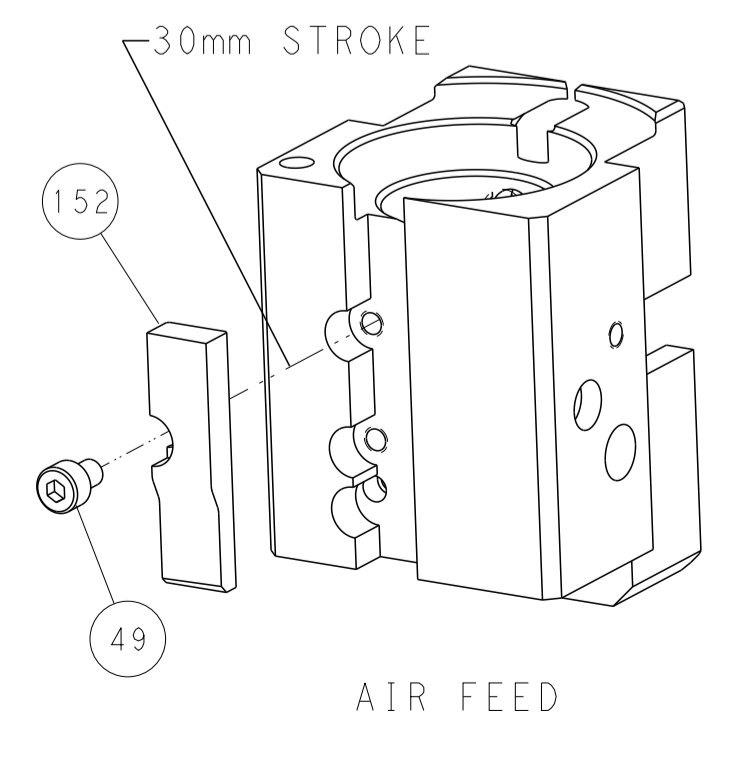
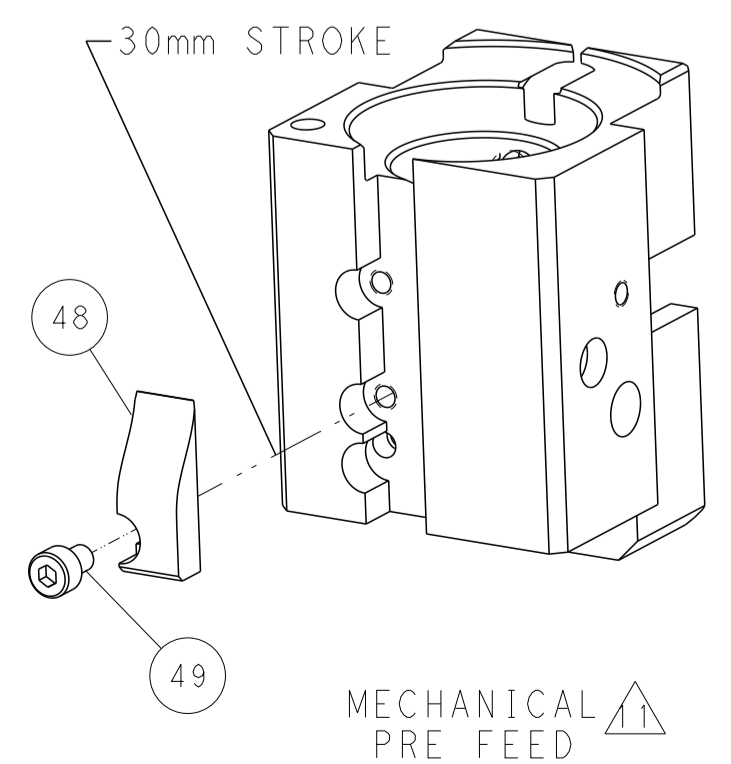
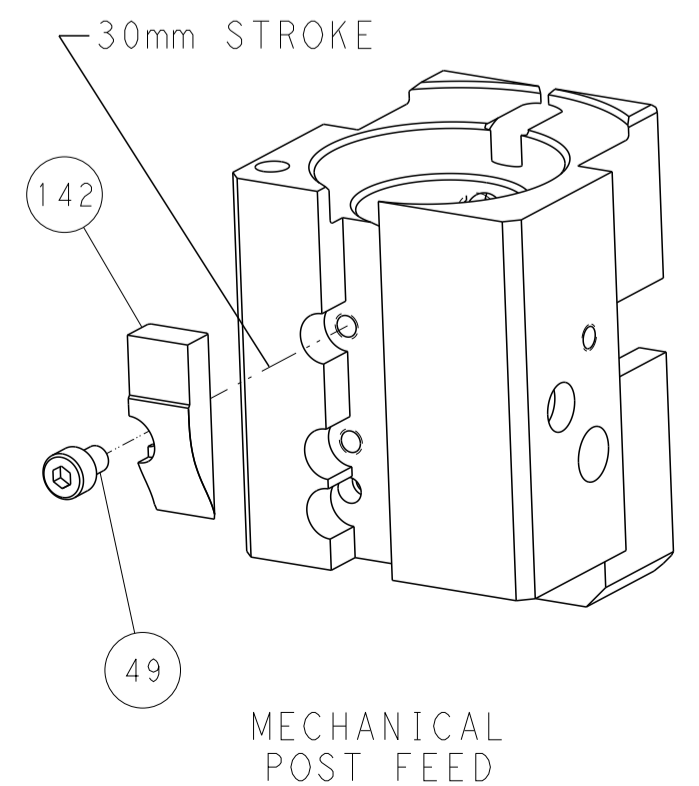
FEED TYPE  
MECHANICAL



PNEUMATIC



CAM POSITIONS



PACIFIC VERSION  
 Shown on sheets 3 of 4 & 4 of 4  
 (Atlantic version shown on sheets 1 of 4 & 2 of 4)

DIMENSIONS:		TOLERANCES UNLESS OTHERWISE SPECIFIED:		DWN EVERALDO 18JUN2014		CHK C. LIMA 18JUN2014		APVD C. LIMA 18JUN2014		NAME		STE TE Connectivity Harrisburg, PA 17105-3608	
mm	0 PLC ±	1 PLC ±	2 PLC ±	3 PLC ±	4 PLC ±	ANGLES ±	FINISH	PRODUCT SPEC	APPLICATION SPEC	SIZE	CAGE CODE	DRAWING NO	RESTRICTED TO
MATERIAL										A	00779	©=2150445	
Customer Accessible Production Drawing										SCALE	1:1	SHEET	4 of 4
										REV	B		