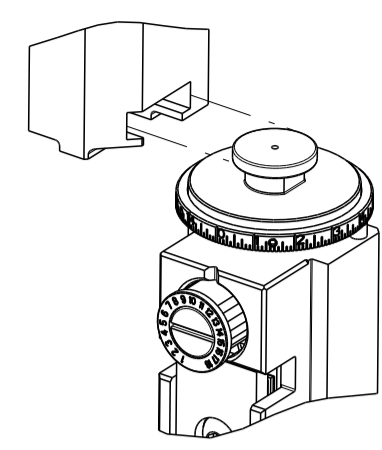


| PART NUMBER | REVISION | DESCRIPTION | FEED TYPE |
|-------------|----------|----------------------------------|------------|
| 2150579-1 | B | FINE CRIMP HEIGHT ADJUST | MECHANICAL |
| 2150579-2 | B | FINE CRIMP HEIGHT ADJUST | PNEUMATIC |
| 7-2150579-1 | B | MECHANICAL AND CRIMP TOOLING KIT | MECHANICAL |
| 7-2150579-2 | B | PNEUMATIC AND CRIMP TOOLING KIT | PNEUMATIC |
| 7-2150579-7 | A | CRIMP TOOLING KIT | - |

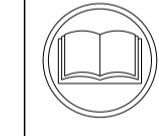
ATLANTIC VERSION TERMINATOR INTERFACE ADAPTER



| APPLICATOR DATA | | |
|-----------------------------|----------------|------|
| CRIMP | SIZE | TYPE |
| WIRE | 2.31 mm [.091] | F |
| INSUL | 3.12 mm [.123] | F |
| APPL INSTRUCTIONS 408-35043 | | |

| | | | |
|---|-------------------|------------------------------|---------------|
| TERMINAL DATA: LEAR TERMINAL GROTE & HARTMANN CRIMP SPECIFICATION | | | |
| TERMINAL NAME: TERMINAL, 6.3 TYPE F/O | | | |
| WIRE STRIP LENGTH | | INSULATION DIAMETER RANGE | |
| 5.60-6.40 mm [.220-.252 IN] | | ∅1.60-2.10 mm [.063-.083 IN] | |
| TERMINAL APPLICATION SPECIFICATION | 25722 Rev 9/28/05 | | |
| TERMINALS APPLIED | | | |
| TE TERMINAL | LEAR TERMINAL | TE TERMINAL | LEAR TERMINAL |
| 1572910-1 | 25722.123.204 | 1572910-5 | 25722.417.031 |
| 1572910-2 | 25722.201.004 | 1572910-6 | 25722.201.042 |
| 1572910-3 | 25722.123.211 | 1572910-7 | 25722.123.242 |
| 1572910-4 | 25722.201.011 | | |

| WIRE SIZE | CRIMP HEIGHT mm [INCH] | CRIMP HEIGHT REFERENCE SETTING |
|----------------------------|----------------------------|--------------------------------|
| 2X FLRY 0.5mm ² | 1.60+/-0.05 [.063+/-0.002] | 6.7 |
| FLRY 1mm ² | 1.55+/-0.05 [.061+/-0.002] | 7.2 |
| FLRY 0.75mm ² | 1.50+/-0.05 [.059+/-0.002] | 7.8 |
| FLRY 0.5mm ² | 1.40+/-0.05 [.055+/-0.002] | 9.0 |



- 1 RECOMMENDED SPARE PARTS
- 2 REFER TO SUPPLIED INSTRUCTION SHEET FOR CLEANING, LUBRICATION AND STORAGE OF APPLICATOR.
- 3 APPLY PART NUMBER 2-23419-6 LOCTITE TO THREADS OF ITEM 242.
- 4 CRIMP HEIGHT REFERENCE SETTING WAS THE SETTING USED WHEN THE APPLICATOR WAS QUALIFIED AT THE FACTORY. ADJUSTMENT MAY BE NECESSARY WHEN RUNNING APPLICATOR IN THE FIELD.
- 5 TERMINAL LUBRICANT IS RECOMMENDED.
- 6. UNLESS SPECIFIED OTHERWISE TORQUE VALUES SHALL BE USED PER DOCUMENT, 101-35000.

***WARNING**
 ON INSTALLATION, SET WIRE DISC TO CRIMP HEIGHT REFERENCE SETTING FOR LARGEST WIRE SIZE. CRIMP HEIGHT REFERENCE SETTINGS GREATER THAN THE VALUE SHOWN MAY CAUSE DAMAGE TO THE CRIMP TOOLING. REFER TO THE INSTRUCTION SHEET FOR PROPER SETUP AND ADJUSTMENTS.

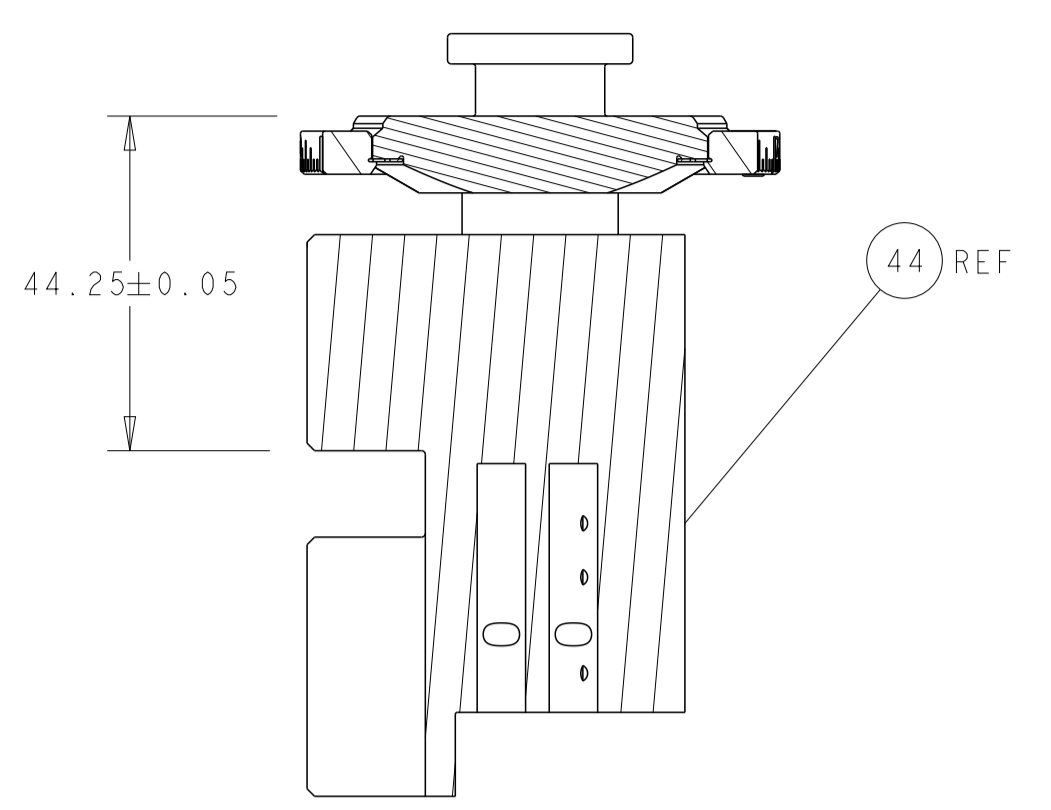
| LOC | DIST | REVISIONS | | | | | |
|-----|------|-----------|-----|---------------|-----------|-----|------|
| A | 66 | P | LTN | DESCRIPTION | DATE | OWN | APVD |
| | | 1 | | ORIGINAL | 06JUL2015 | GH | TE |
| | | A | | RELEASED | 03AUG2015 | GH | TE |
| | | B | | ECR-20-014618 | 14OCT2020 | TB | RK |

| | | | | | | | | |
|---|----------|-----|-----|-----|-------------|-------------------------------------|------------------------------|---------|
| - | 1 | - | 1 | - | 2119641-1 | FEED CAM, AIR FEED | 248 | |
| - | 1 | 1 | 1 | 1 | 2119082-3 | CAM, SNAIL, INSULATION ADJUSTMENT | 244 | |
| - | 1 | 1 | 1 | 1 | 2079764-1 | WASHER, WAVE SPRING, CREST-TO-CREST | 243 | |
| - | 1 | 1 | 1 | 1 | 2119083-1 | RETAINER, INSULATION DIAL | 242 | |
| - | - | 1 | - | 1 | 2119580-1 | MECHANICAL FEED ASSEMBLY | 239 | |
| - | 1 | - | 1 | - | 2844940-3 | AIR FEED MODULE | 238 | |
| - | 1 | 1 | 1 | 1 | 1-18028-0 | WASHER, FLAT, REG M8 | 192 | |
| - | REF | REF | REF | REF | 994970-2 | COUNTER, MAGNETIC | 164 | |
| - | 1 | 1 | 1 | 1 | 455888-5 | SPACER, CRIMPER | 82 | |
| - | 1 | 1 | 1 | 1 | 1803607-4 | DOCUMENTATION PACKAGE | 71 | |
| - | 2 | 2 | 2 | 2 | 2-18032-2 | SCR, SET, FLT PNT, M3 X 10.0 | 70 | |
| - | 1 | 1 | 1 | 1 | 2119740-1 | TAG, IDENTIFICATION | 67 | |
| - | 2 | 2 | 2 | 2 | 2168078-1 | SCREW, DRIVE, RH, RoHS, 2 x .188 | 66 | |
| - | 2 | 2 | 2 | 2 | 2168400-8 | SHCS, LOW HEAD, RoHS, M4 X 16 | 64 | |
| - | 1 | 1 | 1 | 1 | 2168083-2 | SCR, SKT HD CAP, RoHS, M4 X 8.0 | 60 | |
| - | 1 | 1 | 1 | 1 | 5-18022-5 | SCR, HEX HD CAP, M4 X 6.0 | 59 | |
| - | - | 1 | - | 1 | 2063961-1 | FEED FINGER | 58 | |
| - | 3 | 3 | 3 | 3 | 2168400-4 | SHCS, LOW HEAD, RoHS, M4 X 8 | 57 | |
| - | 2 | 2 | 2 | 2 | 1-2168083-0 | SCR, SKT HD CAP, RoHS, M4 X 10 | 56 | |
| - | 2 | 2 | 2 | 2 | 5018030-1 | NUT, HEX, REG, RoHS, M3 | 54 | |
| - | 2 | 2 | 2 | 2 | 986965-8 | NUT, LOCK, HEX, TORQUE (M4) | 53 | |
| - | 1 | - | 1 | - | 2063961-1 | FEED FINGER | 51 | |
| - | 1 | 2 | 1 | 2 | 18023-9 | SCR, SKT HD CAP M4 X 6.0 | 49 | |
| - | - | 1 | - | 1 | 2119652-1 | FEED CAM, PRE FEED | 48 | |
| - | - | 1 | - | 1 | 2119653-1 | FEED CAM, POST FEED | 47 | |
| - | 1 | 1 | 1 | 1 | 2119655-5 | APPLICATOR BASIC ASSEMBLY, EF | 46 | |
| - | 1 | 1 | 1 | 1 | 1803517-1 | RAM ASSEMBLY, EF ATLANTIC | 44 | |
| - | 1 | 1 | 1 | 1 | 1803602-1 | SCR, BHSC, RoHS (M8 X 25) | 41 | |
| - | 7 | 7 | 7 | 7 | 1-18028-2 | WASHER, FLAT, REG M4 | 33 | |
| - | 2 | 2 | 2 | 2 | 2168083-9 | SCR, SKT HD CAP, RoHS, M4 X 20 | 31 | |
| - | 2 | 2 | 2 | 2 | 2168083-2 | SCR, SKT HD CAP, RoHS, M4 X 8.0 | 29 | |
| - | 1 | 1 | 1 | 1 | 240639-1 | STRIPPER (MACHINING) | 27 | |
| - | 2 | 2 | 2 | 2 | 1-2168083-5 | SCR, SKT HD CAP, RoHS, M4 X 30 | 25 | |
| - | 1 | 1 | 1 | 1 | 1752371-5 | PLATE, STRIP GUIDE | 24 | |
| - | 1 | 1 | 1 | 1 | 240825-3 | PLATE, STRIP HOLD DOWN | 23 | |
| - | 2 | 2 | 2 | 2 | 2-22281-3 | SPRING, COMPRESSION | 22 | |
| - | 1 | 1 | 1 | 1 | 1803292-4 | DRAG | 20 | |
| - | 2 | 2 | 2 | 2 | 1901259-4 | GUIDE, LOWER STRIP | 18 | |
| - | 4 | 4 | 4 | 4 | 1-2079383-1 | SCR, BHSC, RoHS (M6 X 12) | 17 | |
| - | 1 | 1 | 1 | 1 | 240641-6 | SPACER | 16 | |
| - | 1 | 1 | 1 | 1 | 240644-1 | PLATE, REAR SHEAR | 11 | |
| - | - | - | - | - | - | - | 10 | |
| - | 1 | 1 | 1 | 1 | 690482-4 | PLATE, FRONT SHEAR | 9 | |
| - | 1 | 2 | 2 | 1 | 1 | 8-1803001-6 | ANVIL, COMBINATION, END FEED | 8 |
| - | 1 | 1 | 1 | 1 | 1-2217206-0 | BLADE, SLUG | 7 | |
| - | - | - | - | - | - | - | 6 | |
| - | 1 | 1 | 1 | 1 | 240641-7 | SPACER | 5 | |
| - | 1 | 1 | 1 | 1 | 238011-2 | BLOCK, CRIMPER SPACER | 4 | |
| - | 1 | 2 | 2 | 1 | 1 | 7-1803016-1 | CRIMPER, INSULATION F | 3 |
| - | 1 | 1 | 1 | 1 | 1-455888-0 | SPACER, CRIMPER | 2 | |
| - | 1 | 2 | 2 | 1 | 1 | 9-1633738-2 | CRIMPER, WIRE | 1 |
| - | 77-72-71 | - | 2 | - | 1 | PART NO | DESCRIPTION | ITEM NO |

ATLANTIC VERSION
 Shown on sheets 1 of 4 & 2 of 4
 (Pacific version shown on sheets 3 of 4 & 4 of 4)

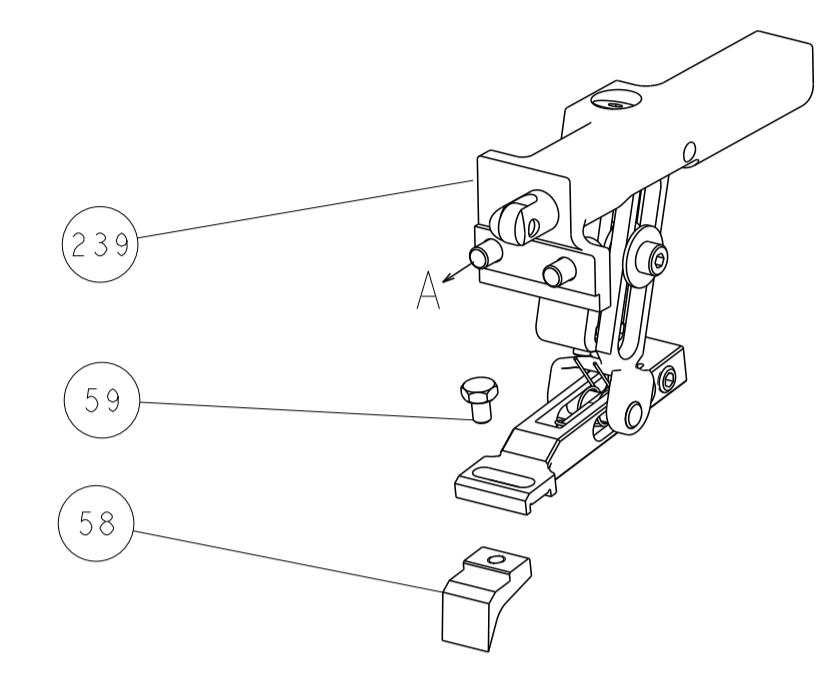
| | | | | | | | | | | | |
|----------------|--|--|--|------------------------|--|---------------------------|--|--------------------------|--|---|--|
| DIMENSIONS: mm | | TOLERANCES UNLESS OTHERWISE SPECIFIED: | | DWG: HOFFNER 6JULY2015 | | CHK: T. ELBIN 7JULY2015 | | APVD: T. ELBIN 7JULY2015 | | NAME: TE Connectivity Harrisburg, PA 17105-3608 | |
| 0 PLC ± | | 1 PLC ± | | 2 PLC ± | | 3 PLC ± | | 4 PLC ± | | RESTRICTED TO | |
| MATERIAL: | | FINISH: | | WEIGHT: | | SCALE: A1 00779 C=2150579 | | SHEET 1 OF 4 | | REV B | |

| LOC | DIST | REV | DESCRIPTION | DATE | OWN | APVD |
|-----|------|-----|-------------|------|-----|------|
| A | 66 | | SEE SHEET 1 | | | |

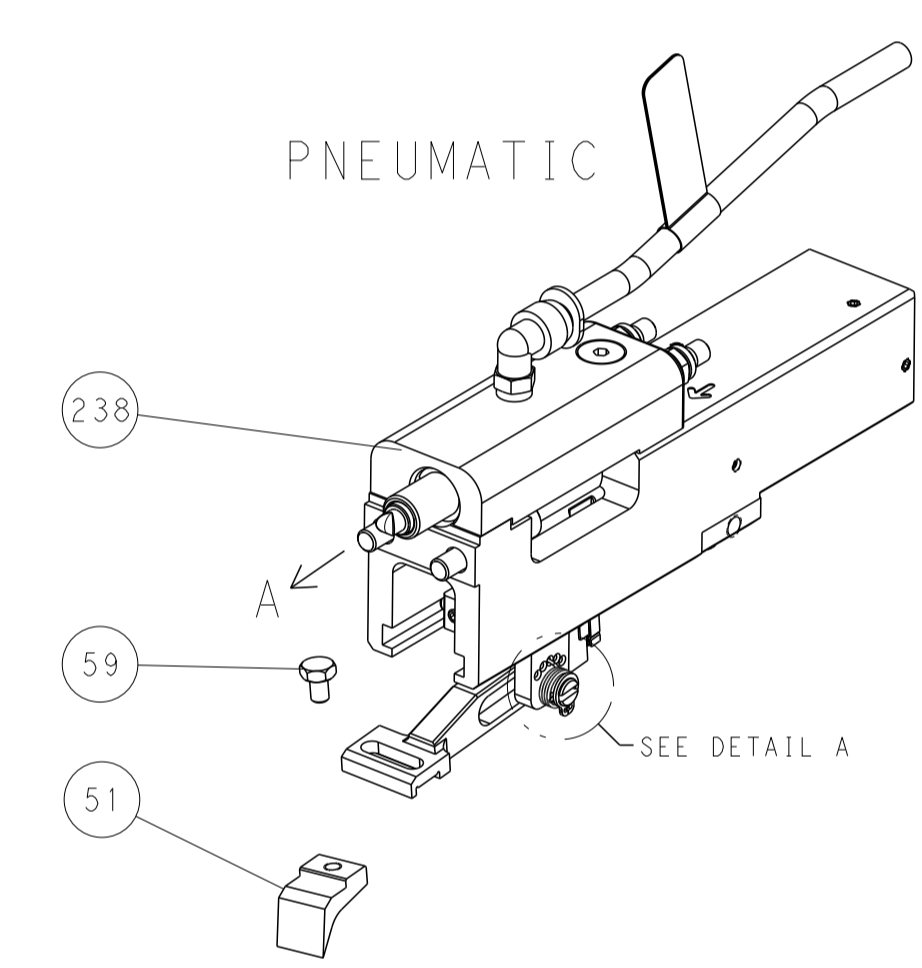


RAM SET-UP

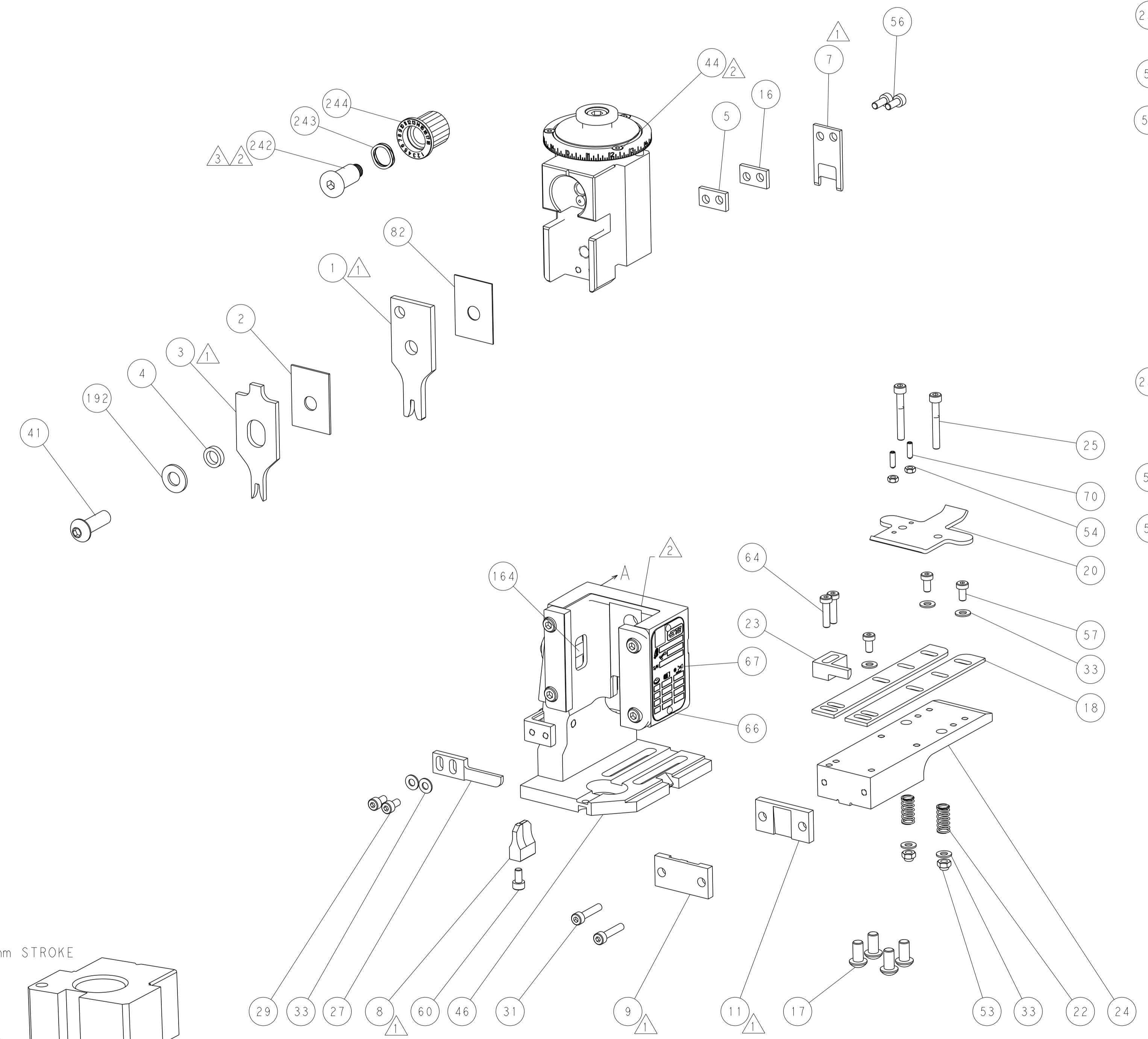
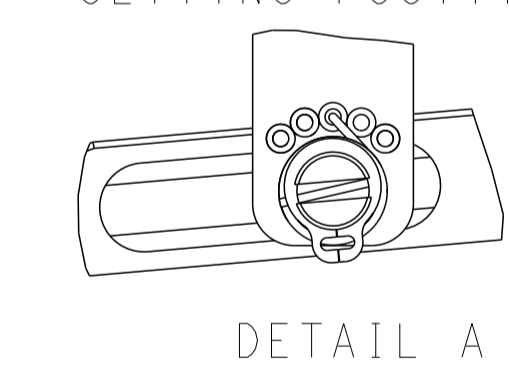
FEED TYPE
MECHANICAL



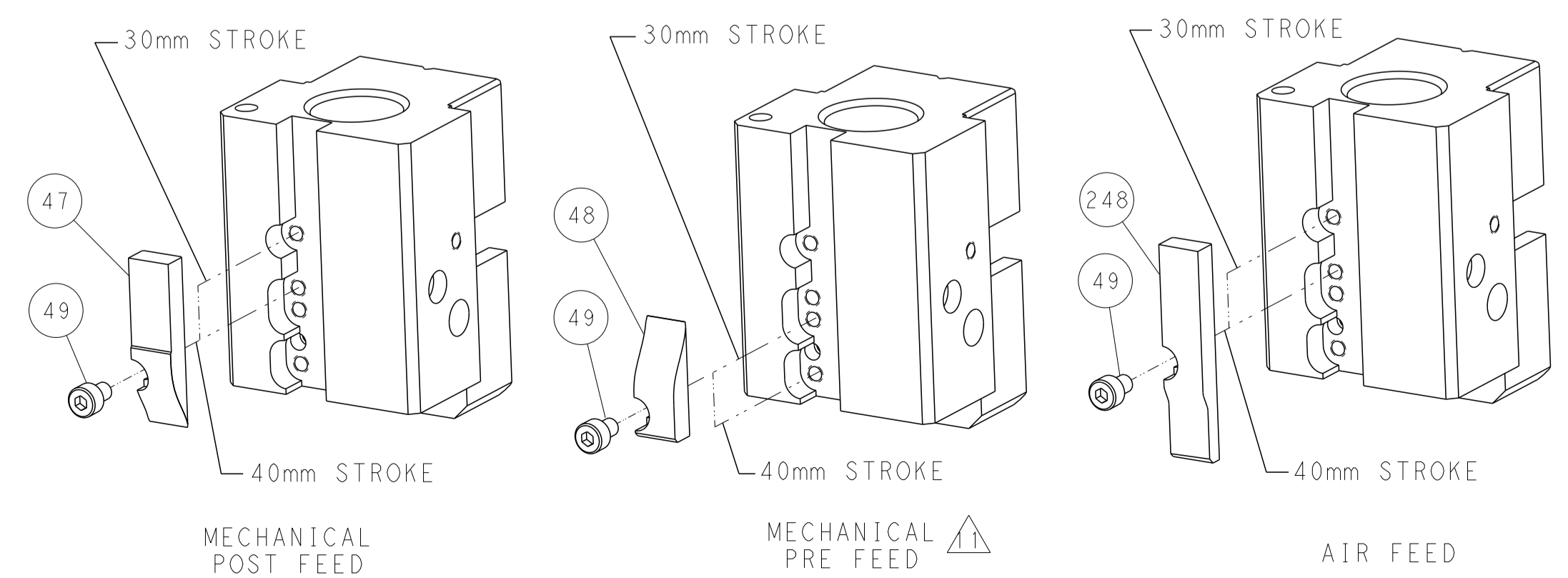
PNEUMATIC



FEED SPRING
SETTING POSITION



CAM POSITIONS

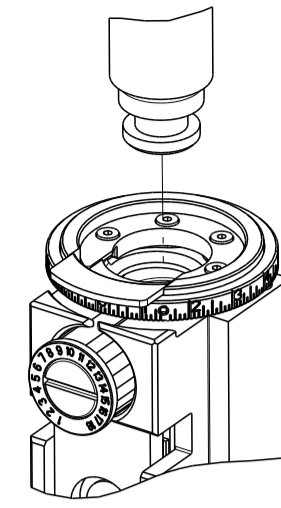


ATLANTIC VERSION
 Shown on sheets 1 of 4 & 2 of 4
 (Pacific version shown on sheets 3 of 4 & 4 of 4)

| | | | | | | | | | |
|-----------------------|--|---|--|---|--|---|--|----------------|--|
| DIMENSIONS: mm | | TOLERANCES UNLESS OTHERWISE SPECIFIED: 0 PLC ± 1 PLC ± 2 PLC ± 3 PLC ± 4 PLC ± ANGLES ± FINISH | | DWN: HOFFNER 6 JULY 2015 CHK: T. ELBIN 7 JULY 2015 APVD: T. ELBIN 7 JULY 2015 PRODUCT SPEC APPLICATION SPEC WEIGHT Customer Accessible Production Drawing | | NAME: Ocean End Feed Applicator SIZE: A1 CAGE CODE: 00779 DRAWING NO: C=2150579 SCALE: 1:1 SHEET: 2 of 4 REV: B | | RESTRICTED TO: | |
|-----------------------|--|---|--|---|--|---|--|----------------|--|

| PART NUMBER | REVISION | DESCRIPTION | FEED TYPE |
|-------------|----------|--------------------------|------------|
| 2-2150579-1 | B | FINE CRIMP HEIGHT ADJUST | MECHANICAL |
| 2-2150579-2 | B | FINE CRIMP HEIGHT ADJUST | PNEUMATIC |
| 7-2150579-7 | A | CRIMP TOOLING KIT | - |

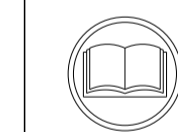
PACIFIC VERSION TERMINATOR
INTERFACE ADAPTER



| APPLICATOR DATA | | |
|--------------------------------|----------------|------|
| CRIMP | SIZE | TYPE |
| WIRE | 2.31 mm [.091] | F |
| INSUL | 3.12 mm [.123] | F |
| APPL INSTRUCTIONS 408-35043 | | |

| TERMINAL DATA: LEAR TERMINAL GROTE & HARTMANN CRIMP SPECIFICATION | | | |
|---|------------------------------|-------------|---------------|
| TERMINAL NAME: TERMINAL, 6.3 TYPE F/O | | | |
| WIRE STRIP LENGTH | INSULATION DIAMETER RANGE | | |
| 5.60-6.40 mm [.220-.252 IN] | ∅1.60-2.10 mm [.063-.083 IN] | | |
| TERMINAL APPLICATION SPECIFICATION | | | |
| 25722 Rev 9/28/05 | | | |
| TERMINALS APPLIED | | | |
| TE TERMINAL | LEAR TERMINAL | TE TERMINAL | LEAR TERMINAL |
| 1572910-1 | 25722.123.204 | 1572910-5 | 25722.417.031 |
| 1572910-2 | 25722.201.004 | 1572910-6 | 25722.201.042 |
| 1572910-3 | 25722.123.211 | 1572910-7 | 25722.123.242 |
| 1572910-4 | 25722.201.011 | | |

| WIRE SIZE | CRIMP HEIGHT mm [INCH] | CRIMP HEIGHT REFERENCE SETTING |
|----------------------------|-------------------------------|--------------------------------|
| 2X FLRY 0.5mm ² | 1.60 +/- 0.05 [.063 +/- .002] | 6.7 |
| FLRY 1mm ² | 1.55 +/- 0.05 [.061 +/- .002] | 7.2 |
| FLRY 0.75mm ² | 1.50 +/- 0.05 [.059 +/- .002] | 7.8 |
| FLRY 0.5mm ² | 1.40 +/- 0.05 [.055 +/- .002] | 9.0 |



- RECOMMENDED SPARE PARTS
- REFER TO SUPPLIED INSTRUCTION SHEET FOR CLEANING, LUBRICATION AND STORAGE OF APPLICATOR.
- APPLY PART NUMBER 2-23419-6 LOCTITE TO THREADS OF ITEM 242.
- CRIMP HEIGHT REFERENCE SETTING WAS THE SETTING USED WHEN THE APPLICATOR WAS QUALIFIED AT THE FACTORY. ADJUSTMENT MAY BE NECESSARY WHEN RUNNING APPLICATOR IN THE FIELD.
- TERMINAL LUBRICANT IS RECOMMENDED.
- UNLESS SPECIFIED OTHERWISE TORQUE VALUES SHALL BE USED PER DOCUMENT, 101-35000.

***WARNING**
ON INSTALLATION, SET WIRE DISC TO CRIMP HEIGHT REFERENCE SETTING FOR LARGEST WIRE SIZE. CRIMP HEIGHT REFERENCE SETTINGS GREATER THAN THE VALUE SHOWN MAY CAUSE DAMAGE TO THE CRIMP TOOLING. REFER TO THE INSTRUCTION SHEET FOR PROPER SETUP AND ADJUSTMENTS.

| LOC | DIST | REVISIONS | | | | | |
|-----|------|-----------|-----|-------------|------|-----|------|
| | | P | LTN | DESCRIPTION | DATE | OWN | APVD |
| A | 66 | - | - | SEE SHEET 1 | - | - | - |

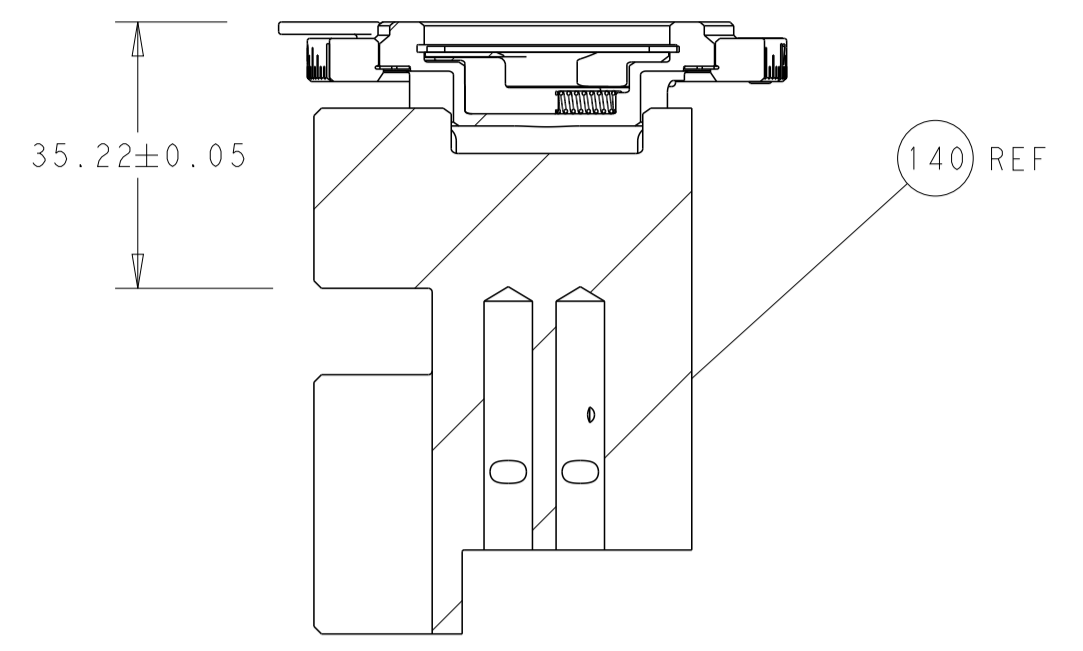
| | | | | | | |
|---|-----|-----|-------------|-------------------------------------|-------------|---------|
| - | 1 | 1 | 2119082-3 | CAM, SNAIL, INSULATION ADJUSTMENT | 244 | |
| - | 1 | 1 | 2079764-1 | WASHER, WAVE SPRING, CREST-TO-CREST | 243 | |
| - | 1 | 1 | 2119083-1 | RETAINER, INSULATION DIAL | 242 | |
| - | - | 1 | 2119580-1 | MECHANICAL FEED ASSEMBLY | 239 | |
| - | 1 | - | 2844940-3 | AIR FEED MODULE | 238 | |
| - | 1 | 1 | 1-18028-0 | WASHER, FLAT, REG M8 | 192 | |
| - | 4 | 4 | 2079383-9 | SCR, BHSC, RoHS (M6 X 20) | 186 | |
| - | REF | REF | 994970-2 | COUNTER, MAGNETIC | 164 | |
| - | 1 | - | 2119641-2 | FEED CAM, AIR FEED | 152 | |
| - | 1 | 1 | 2168083-8 | SCR, SKT HD CAP, RoHS, M4 X 16 | 144 | |
| - | - | 1 | 2119653-2 | FEED CAM, POST FEED | 142 | |
| - | 1 | 1 | 2119655-6 | APPLICATOR BASIC ASSEMBLY, EF | 141 | |
| - | 1 | 1 | 1803518-1 | RAM ASSEMBLY, EF PACIFIC | 140 | |
| - | 1 | 1 | 455888-5 | SPACER, CRIMPER | 82 | |
| - | 1 | 1 | 1803607-4 | DOCUMENTATION PACKAGE | 71 | |
| - | 2 | 2 | 2-18032-2 | SCR, SET, FLT PNT, M3 X 10.0 | 70 | |
| - | 1 | 1 | 2119740-1 | TAG, IDENTIFICATION | 67 | |
| - | 2 | 2 | 2168078-1 | SCREW, DRIVE, RH, RoHS, 2 x .188 | 66 | |
| - | 2 | 2 | 2168400-8 | SHCS, LOW HEAD, RoHS, M4 X 16 | 64 | |
| - | 1 | 1 | 5-18022-5 | SCR, HEX HD CAP, M4 X 6.0 | 59 | |
| - | - | 1 | 2063961-1 | FEED FINGER | 58 | |
| - | 3 | 3 | 2168400-4 | SHCS, LOW HEAD, RoHS, M4 X 8 | 57 | |
| - | 2 | 2 | 1-2168083-0 | SCR, SKT HD CAP, RoHS, M4 X 10 | 56 | |
| - | 2 | 2 | 5018030-1 | NUT, HEX, REG, RoHS, M3 | 54 | |
| - | 2 | 2 | 986965-8 | NUT, LOCK, HEX, TORQUE (M4) | 53 | |
| - | 1 | - | 2063961-1 | FEED FINGER | 51 | |
| - | 1 | 2 | 18023-9 | SCR, SKT HD CAP M4 X 6.0 | 49 | |
| - | - | 1 | 2119652-1 | FEED CAM, PRE FEED | 48 | |
| - | 1 | 1 | 1803602-1 | SCR, BHSC, RoHS (M8 X 25) | 41 | |
| - | 7 | 7 | 1-18028-2 | WASHER, FLAT, REG M4 | 33 | |
| - | 2 | 2 | 2168083-9 | SCR, SKT HD CAP, RoHS, M4 X 20 | 31 | |
| - | 2 | 2 | 2168083-2 | SCR, SKT HD CAP, RoHS, M4 X 8.0 | 29 | |
| - | 1 | 1 | 240639-1 | STRIPPER (MACHINING) | 27 | |
| - | 2 | 2 | 1-2168083-5 | SCR, SKT HD CAP, RoHS, M4 X 30 | 25 | |
| - | 1 | 1 | 1752371-5 | PLATE, STRIP GUIDE | 24 | |
| - | 1 | 1 | 240825-3 | PLATE, STRIP HOLD DOWN | 23 | |
| - | 2 | 2 | 2-22281-3 | SPRING, COMPRESSION | 22 | |
| - | 1 | 1 | 1803292-4 | DRAG | 20 | |
| - | 2 | 2 | 1901259-4 | GUIDE, LOWER STRIP | 18 | |
| - | 1 | 1 | 240641-6 | SPACER | 16 | |
| - | 1 | 1 | 240644-1 | PLATE, REAR SHEAR | 11 | |
| - | - | - | - | - | 10 | |
| - | 1 | 1 | 690482-4 | PLATE, FRONT SHEAR | 9 | |
| - | 1 | 1 | 8-1803001-6 | ANVIL, COMBINATION, END FEED | 8 | |
| - | 1 | 1 | 1-2217206-0 | BLADE, SLUG | 7 | |
| - | - | - | - | - | 6 | |
| - | 1 | 1 | 240641-7 | SPACER | 5 | |
| - | 1 | 1 | 238011-2 | BLOCK, CRIMPER SPACER | 4 | |
| - | 1 | 1 | 7-1803016-1 | CRIMPER, INSULATION F | 3 | |
| - | 1 | 1 | 1-455888-0 | SPACER, CRIMPER | 2 | |
| - | 1 | 1 | 9-1633738-2 | CRIMPER, WIRE | 1 | |
| - | 77 | 22 | 21 | PART NO | DESCRIPTION | ITEM NO |

PACIFIC VERSION
Shown on sheets 3 of 4 & 4 of 4
(Atlantic version shown on sheets 1 of 4 & 2 of 4)

| DIMENSIONS: | | TOLERANCES UNLESS OTHERWISE SPECIFIED: | | DRAWING NO | |
|-------------|---------|--|---------|------------|---------|
| mm | 0 PLC ± | 1 PLC ± | 2 PLC ± | 3 PLC ± | 4 PLC ± |
| | ANGLES | FINISH | | WEIGHT | |
| MATERIAL | | FINISH | | SCALE | |
| | | | | 1:1 | |

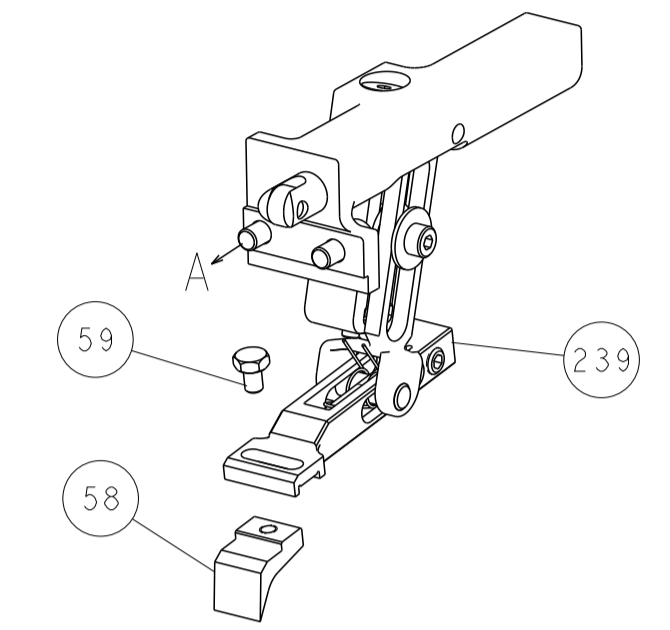
| | | |
|--|-------------|--|
| OWN | 6 JULY 2015 | TE Connectivity Harrisburg, PA 17105-3608 |
| CHK | 7 JULY 2015 | |
| APPV | 7 JULY 2015 | |
| NAME | | |
| Customer Accessible Production Drawing | | RESTRICTED TO |
| SCALE | | SHEET 3 OF 4 |
| REV | | B |

| LOC | | DIST | | REVISIONS | | | |
|-----|----|------|-----|-------------|------|-----|------|
| A | 66 | P | LTM | DESCRIPTION | DATE | OWN | APVD |
| | | - | | SEE SHEET 1 | - | - | - |
| | | | | | | | |

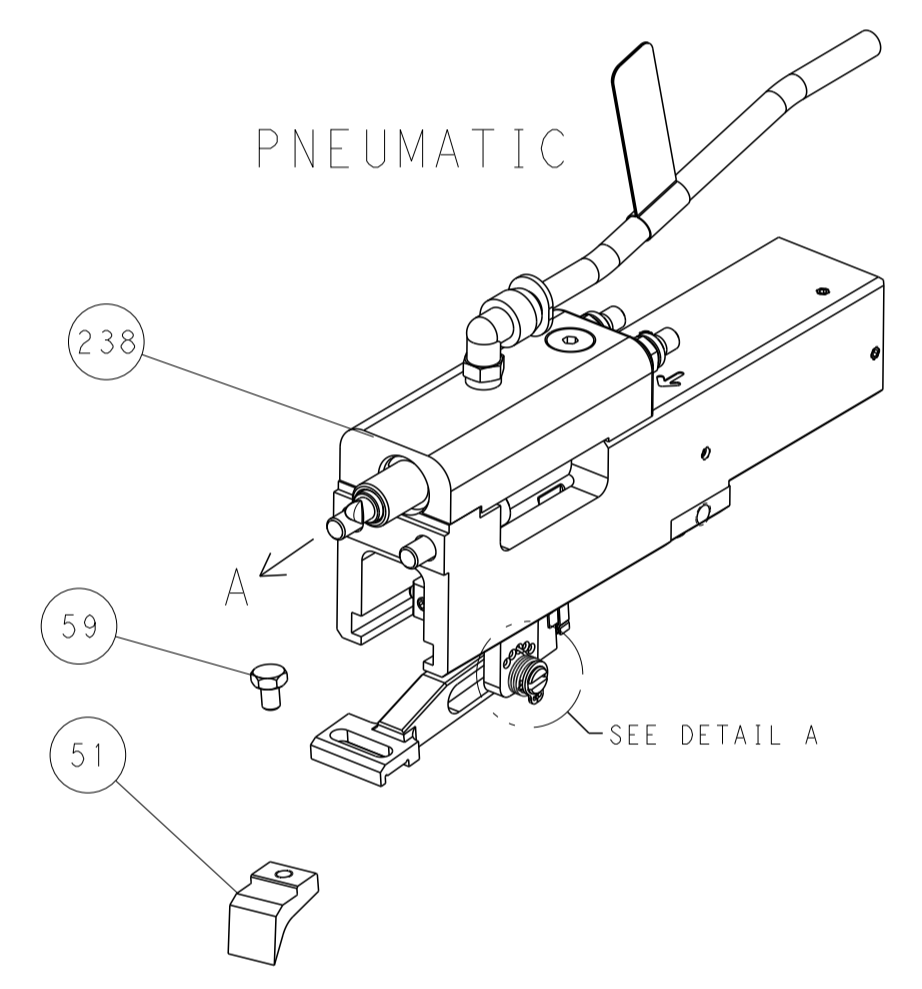


RAM SET-UP

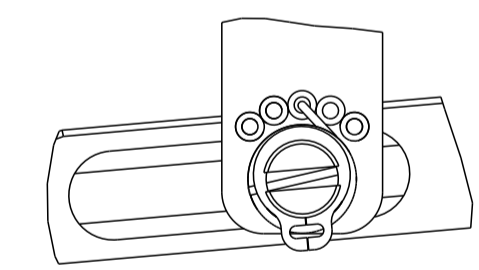
FEED TYPE
MECHANICAL



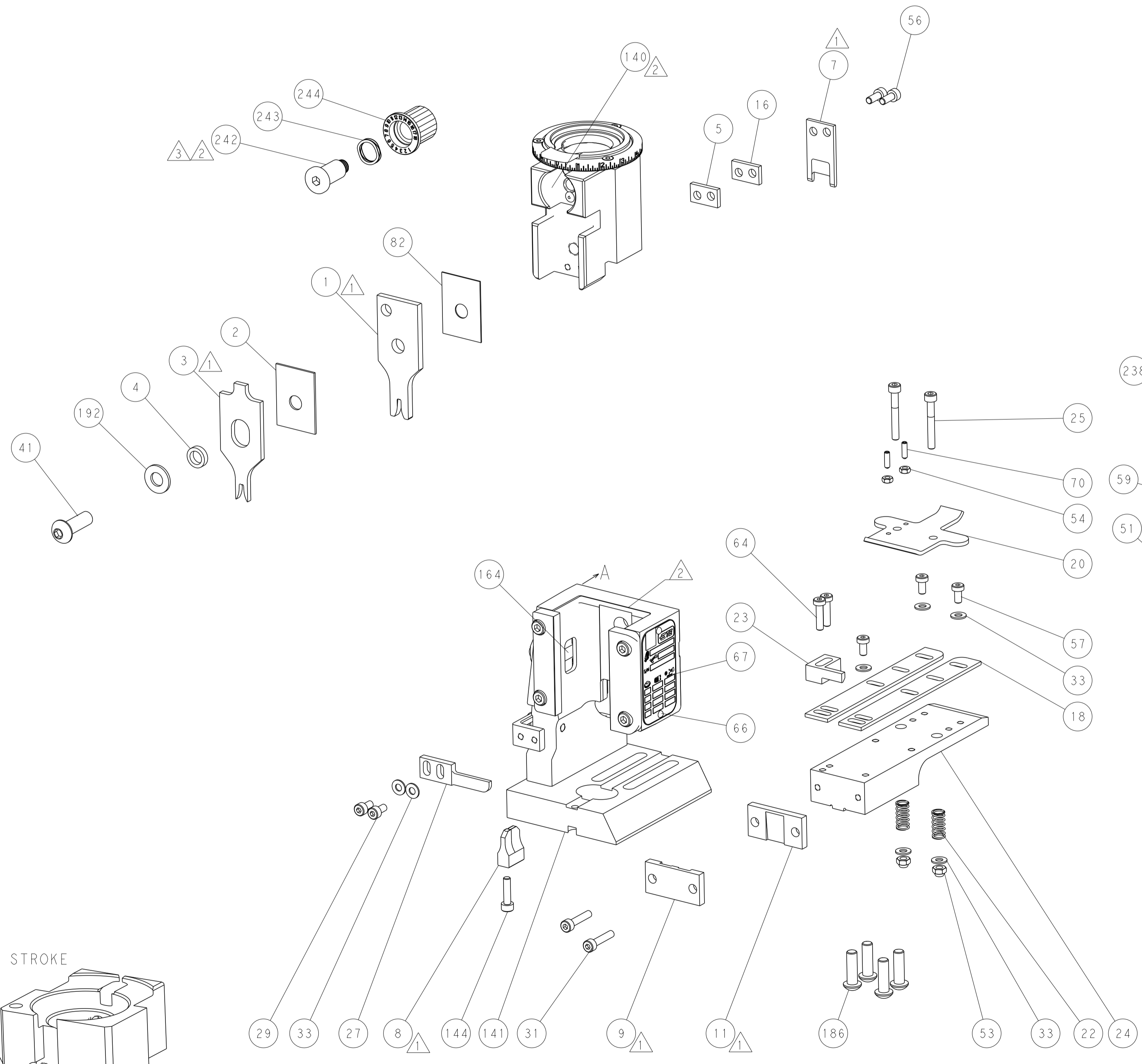
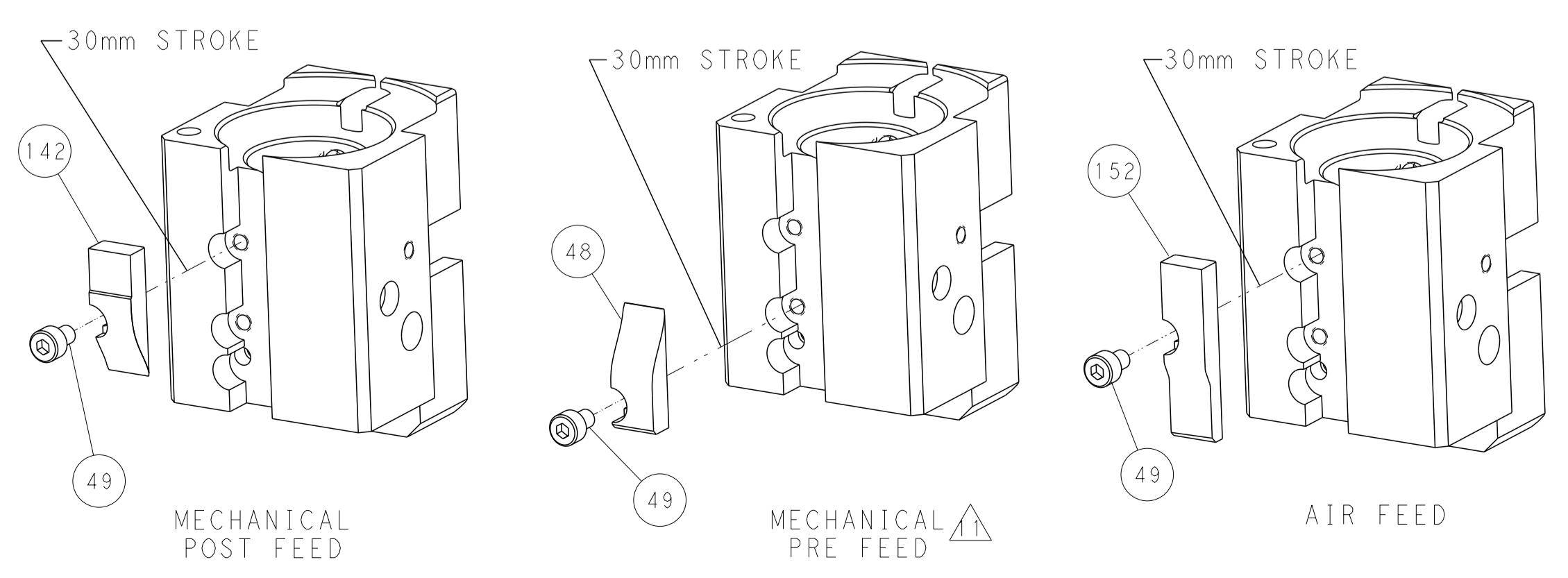
PNEUMATIC



FEED SPRING
SETTING POSITION



CAM POSITIONS



PACIFIC VERSION
 Shown on sheets 3 of 4 & 4 of 4
 (Atlantic version shown on sheets 1 of 4 & 2 of 4)

| | | | | | | | |
|--|---------|--|---------|----------------------------|---------------------------------|-----------------------|---------------------------|
| DIMENSIONS: | | TOLERANCES UNLESS OTHERWISE SPECIFIED: | | DWN: HOFFNER 6 JULY 2015 | | TE Connectivity | |
| mm | 0 PLC ± | 1 PLC ± | 2 PLC ± | 3 PLC ± | 4 PLC ± | 5 PLC ± | Harrisburg, PA 17105-3608 |
| | ANGLES | FINISH | | APVD: T. ELBIN 7 JULY 2015 | NAME: Ocean End Feed Applicator | | |
| MATERIAL: | | | | PRODUCT SPEC | APPLICATION SPEC | SIZE: A1 | CAGE CODE: 00779 |
| | | | | WEIGHT | SCALE: 1:1 | DRAWING NO: C-2150579 | RESTRICTED TO: B |
| Customer Accessible Production Drawing | | | | SHEET 4 OF 4 REV B | | | |