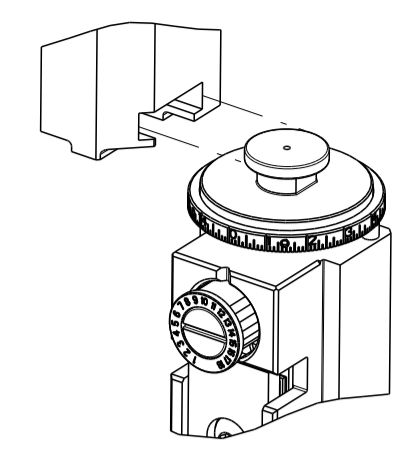


PART NUMBER	REVISION	DESCRIPTION	FEED TYPE
2150622-2	C	FINE CRIMP HEIGHT ADJUST	PNEUMATIC
7-2150622-7	A	CRIMP TOOLING KIT	-

ATLANTIC VERSION TERMINATOR
 INTERFACE ADAPTER



APPLICATOR DATA		
CRIMP	SIZE	TYPE
WIRE	7.11 mm [.280]	F
INSUL	7.87 mm [.310]	F
APPL INSTRUCTIONS 408-35043		

TERMINAL DATA: TE TERMINAL TE CRIMP SPECIFICATION			
TERMINAL NAME: RING TONGUE			
WIRE STRIP LENGTH		INSULATION DIAMETER RANGE	
7.14-7.90 mm [.281-.311 IN]		Ø4.60-6.60 mm [.181-.260 IN]	
TERMINAL APPLICATION SPECIFICATION	114-2084		
TERMINALS APPLIED			
TE TERMINAL	TE TERMINAL	TE TERMINAL	TE TERMINAL
881001-1	881001-2	881001-3	881001-4

WIRE SIZE	CRIMP HEIGHT mm [INCH]	CRIMP HEIGHT REFERENCE SETTING
10.00mm2	3.94 +/- 0.05 [.155 +/- .002]	5.9
8.00mm2	3.68 +/- 0.05 [.145 +/- .002]	9.0

- RECOMMENDED SPARE PARTS
- REFER TO SUPPLIED INSTRUCTION SHEET FOR CLEANING, LUBRICATION AND STORAGE OF APPLICATOR.
- APPLY PART NUMBER 2-23419-6 LOCTITE TO THREADS OF ITEM 242.
- CRIMP HEIGHT REFERENCE SETTING WAS THE SETTING USED WHEN THE APPLICATOR WAS QUALIFIED AT THE FACTORY. ADJUSTMENT MAY BE NECESSARY WHEN RUNNING APPLICATOR IN THE FIELD.
- TERMINAL LUBRICANT IS RECOMMENDED.
- 6. UNLESS SPECIFIED OTHERWISE TORQUE VALUES SHALL BE USED PER DOCUMENT, 101-35000.
- TERMINAL PITCH NOT COMPATIBLE WITH MECHANICAL FEED.

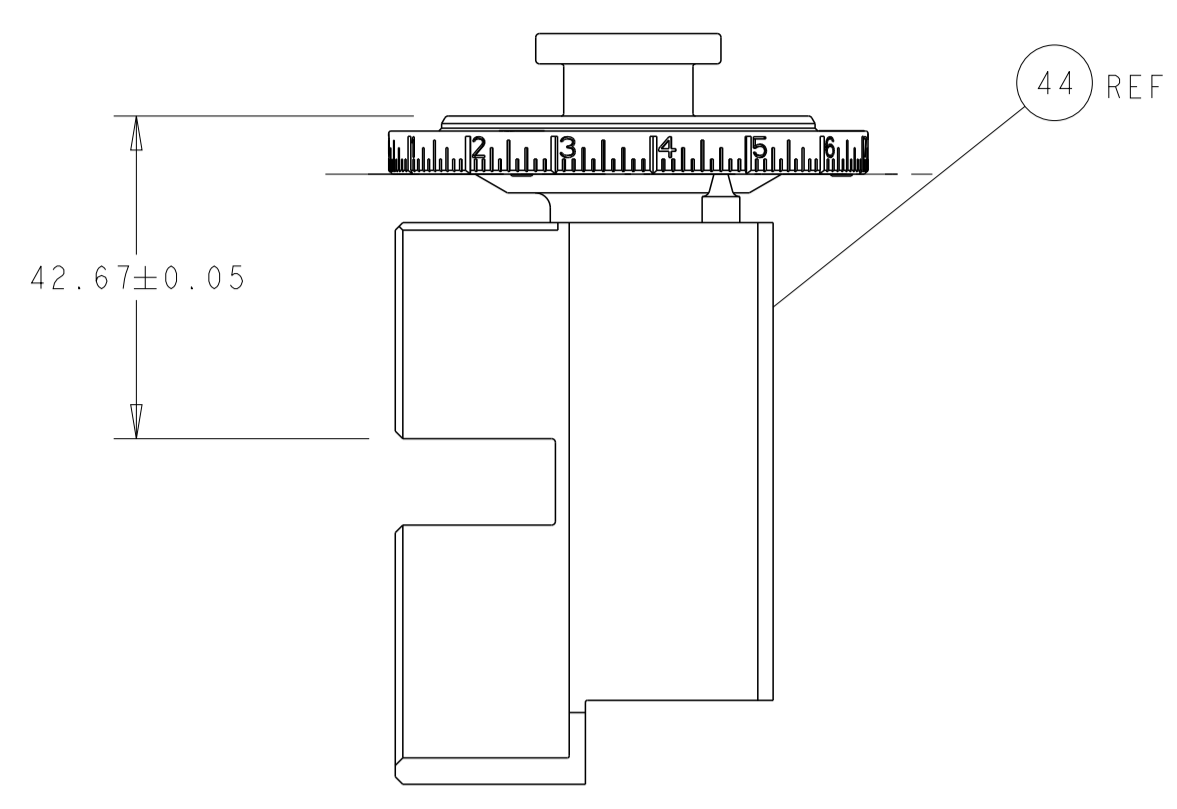
***WARNING**
 ON INSTALLATION, SET WIRE DISC TO CRIMP HEIGHT REFERENCE SETTING FOR LARGEST WIRE SIZE. CRIMP HEIGHT REFERENCE SETTINGS GREATER THAN THE VALUE SHOWN MAY CAUSE DAMAGE TO THE CRIMP TOOLING. REFER TO THE INSTRUCTION SHEET FOR PROPER SETUP AND ADJUSTMENTS.

LOC	DIST	REVISIONS					
A	66	P	LTN	DESCRIPTION	DATE	DWN	APVD
		A		RELEASED	04FEB2016	MR	TE
		B		ECR-24-196502	03JAN2024	TB	RK
		C		ECR-24-208675	20MAY2024	ZZ	TE

-	1	1633976-1	TERMINAL RAMP	261	
-	1	1803078-3	SPACER, PRECISION	259	
-	1	2119641-1	FEED CAM, AIR FEED	248	
-	1	2119082-7	CAM, SNAIL, INSULATION ADJUSTMENT	244	
-	1	2079764-1	WASHER, WAVE SPRING, CREST-TO-CREST	243	
-	1	2119083-1	RETAINER, INSULATION DIAL	242	
-	1	2844940-4	AIR FEED MODULE	238	
-	3	240642-1	PLATE, FRONT SHEAR	196	
-	1	1-18028-0	WASHER, FLAT, REG M8	192	
-	2	1-2168083-1	SCR, SKT HD CAP, RoHS, M3 X 6	191	
-	REF	994970-2	COUNTER, MAGNETIC	164	
-	1	2119955-2	ASSY, LUBRICATOR, END FEED	84	
-	1	455888-3	SPACER, CRIMPER -	82	
-	1	1803607-4	DOCUMENTATION PACKAGE	71	
-	2	1-1655785-1	SCR, BTN SKT HD CAP (M3 X 12)	70	
-	1	2119740-1	TAG, IDENTIFICATION	67	
-	2	2168078-1	SCREW, DRIVE, RH, RoHS, 2 x .188	66	
-	1	2168083-2	SCR, SKT HD CAP, RoHS, M4 X 8.0	60	
-	1	5-18022-5	SCR, HEX HD CAP, M4 X 6.0	59	
-	4	2168400-1	SHCS, LOW HEAD, RoHS, M4 X 12	57	
-	2	2168083-9	SCR, SKT HD CAP, RoHS, M4 X 20	56	
-	2	5018030-1	NUT, HEX, REG, RoHS, M3	55	
-	2	986965-8	NUT, LOCK, HEX, TORQUE (M4)	53	
-	1	1-2063961-0	FEED FINGER	51	
-	1	18023-9	SCR, SKT HD CAP M4 X 6.0	49	
-	1	1-2119655-1	APPLICATOR BASIC ASSEMBLY, EF	46	
-	1	1803517-2	RAM ASSEMBLY, EF ATLANTIC	44	
-	1	1803602-2	SCR, BHSC, RoHS (M8 X 40)	41	
-	8	1-18028-2	WASHER, FLAT, REG M4	33	
-	2	1-2168083-5	SCR, SKT HD CAP, RoHS, M4 X 30	31	
-	2	2168083-2	SCR, SKT HD CAP, RoHS, M4 X 8.0	29	
-	1	690455-2	STRIPPER, FRONT CASTING	27	
-	2	1-2168083-6	SCR, SKT HD CAP, RoHS, M4 X 35	25	
-	1	1752371-2	PLATE, STRIP GUIDE	24	
-	2	2-22281-3	SPRING, COMPRESSION	22	
-	1	1633168-1	ARM, STOCK DRAG	21	
-	1	1-464452-1	DRAG, STOCK	20	
-	1	4-1901696-1	STRIP GUIDE, REAR	19	
-	1	4-1901695-1	STRIP GUIDE, FRONT	18	
-	4	1-2079383-1	SCR, BHSC, RoHS (M6 X 12)	17	
-	1	4-240641-3	SPACER	16	
-	1	1-240833-0	PLATE, REAR SHEAR	11	
-	2	5-240645-5	SPACER, SHEAR PLATE	10	
-	1	240642-1	PLATE, FRONT SHEAR	9	
1	1	9-1803000-9	ANVIL, COMBINATION, END FEED	8	
-	1	9-240651-9	BLADE, SLUG	7	
-	-	-	-	6	
-	1	2-240641-6	SPACER	5	
-	1	6-238011-8	BLOCK, CRIMPER SPACER	4	
1	1	6-1803187-1	CRIMPER, INSULATION F	3	
-	1	1-455888-5	SPACER, CRIMPER -	2	
1	1	6-1633738-6	CRIMPER, WIRE	1	
-	77	-2	PART NO	DESCRIPTION	ITEM NO

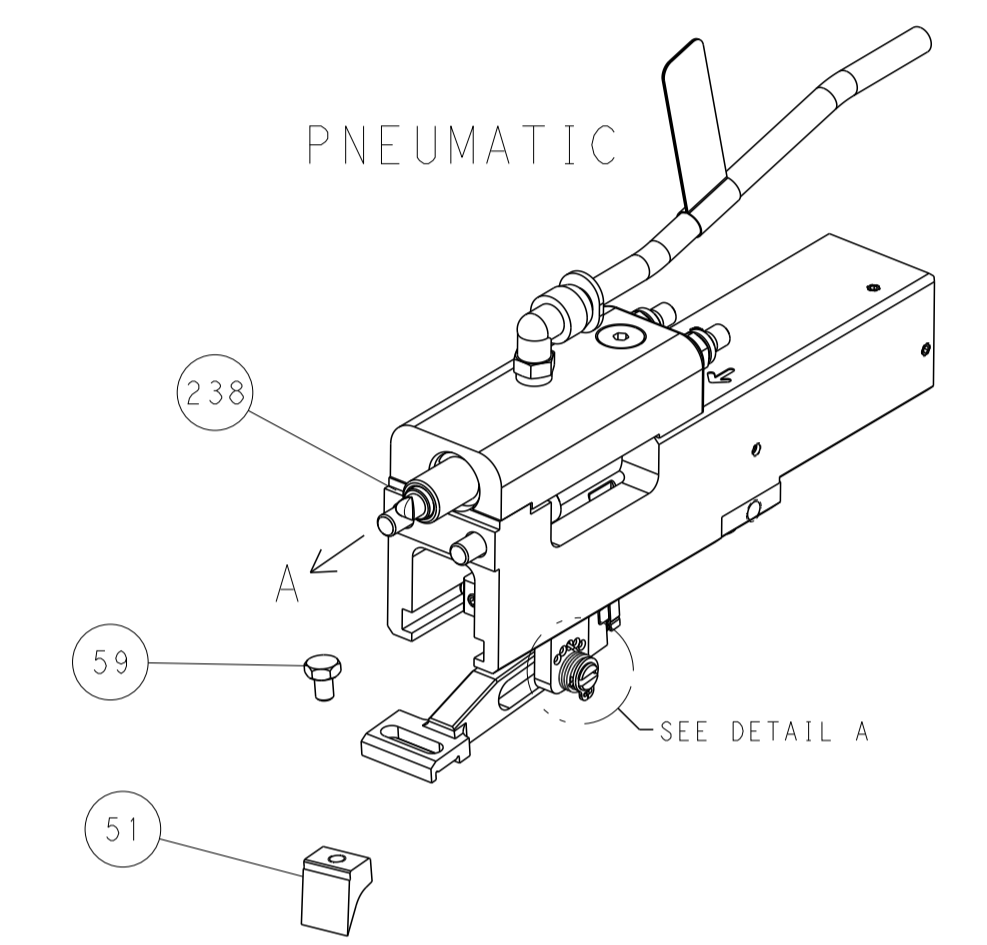
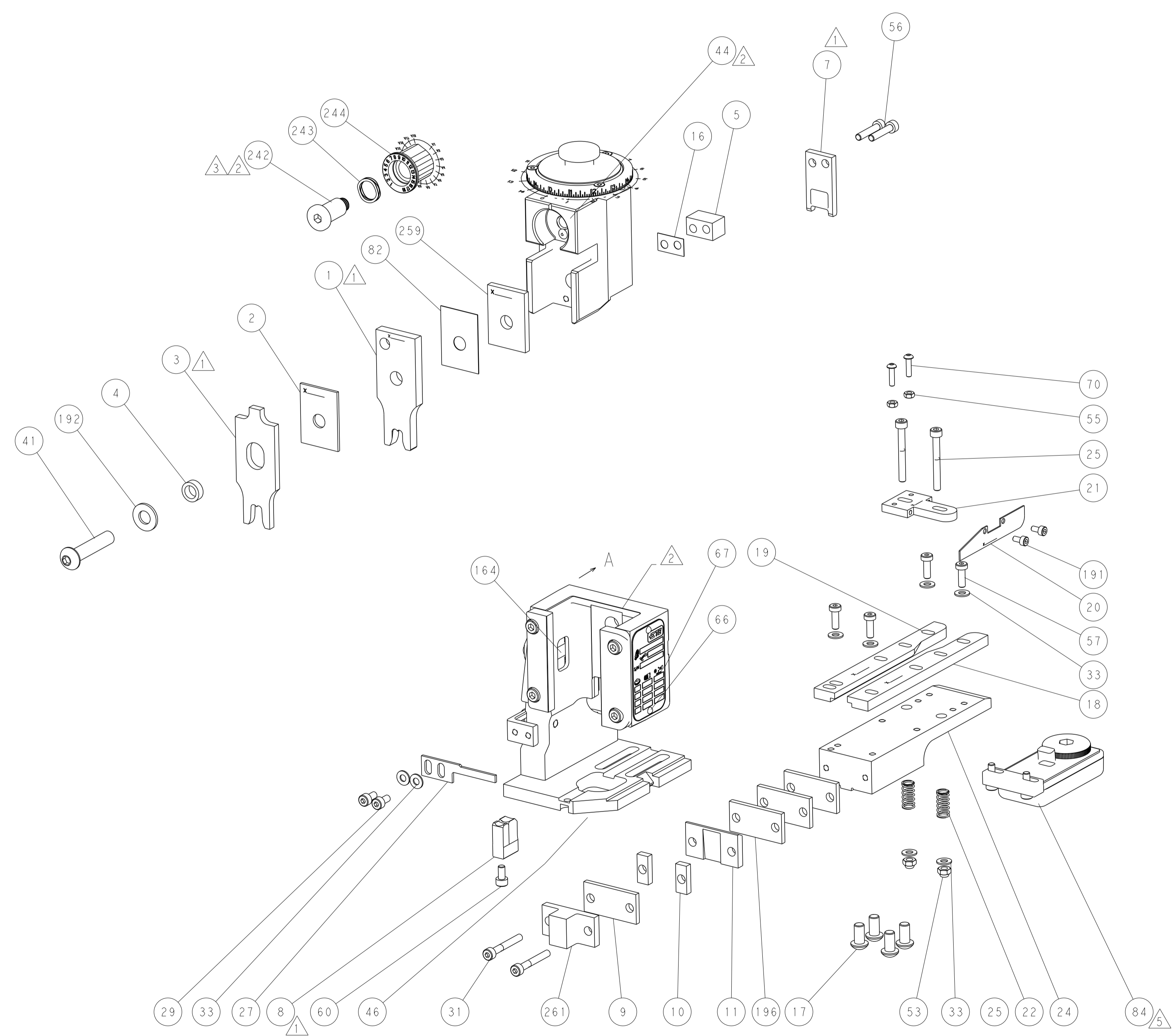
DIMENSIONS: mm 		TOLERANCES UNLESS OTHERWISE SPECIFIED: 0 PLC ± 1 PLC ± 2 PLC ± 3 PLC ± 4 PLC ± ANGLES ± FINISH		DWN R. HUANG 17SEP2015 CHK L. ZHANG 17SEP2015 APVD J. GUO 17SEP2015		NAME Ocean End Feed Applicator	
MATERIAL		WEIGHT		SIZE		RESTRICTED TO	
				A 00779 C=2150622		Customer Accessible Production Drawing	
				SCALE 1:1		SHEET 1 OF 4	

LOC		DIST		REVISIONS			
A	66	P	LTM	DESCRIPTION	DATE	DWN	APVD
		-		SEE SHEET 1			

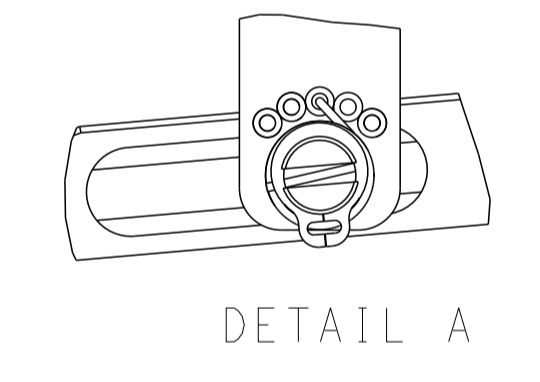


RAM SET-UP

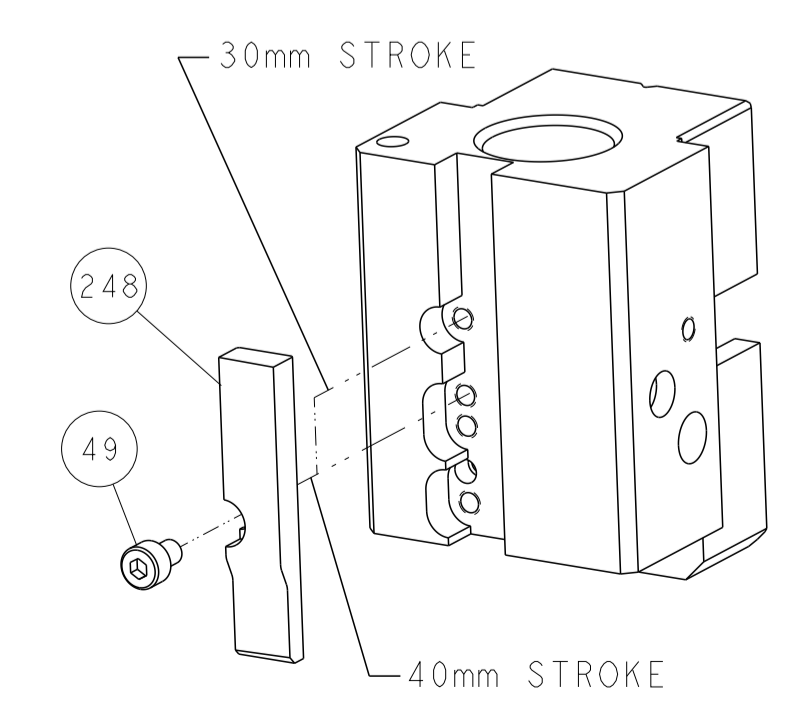
FEED TYPE



FEED SPRING SETTING POSITION



CAM POSITION



AIR FEED

<small>THIS DRAWING IS UNPUBLISHED. RELEASED FOR PUBLICATION BY TYCO ELECTRONICS CORPORATION. ALL RIGHTS RESERVED.</small>		DWN: K. HUANG 17SEP2015 CHK: L. ZHANG 17SEP2015 APVD: J. GUO 17SEP2015	TE Connectivity Harrisburg, PA 17105-3608
DIMENSIONS: mm TOLERANCES UNLESS OTHERWISE SPECIFIED: 0 PLC ± 1 PLC ± 2 PLC ± 3 PLC ± 4 PLC ± ANGLES ± MATERIAL: - FINISH: -		NAME: Ocean End Feed Applicator PRODUCT SPEC: - APPLICATION SPEC: - WEIGHT: - SCALE: 1:1	SIZE: A1 CAGE CODE: 00779 DRAWING NO: C=2150622 SHEET 2 OF 4 REV C
Customer Accessible Production Drawing			