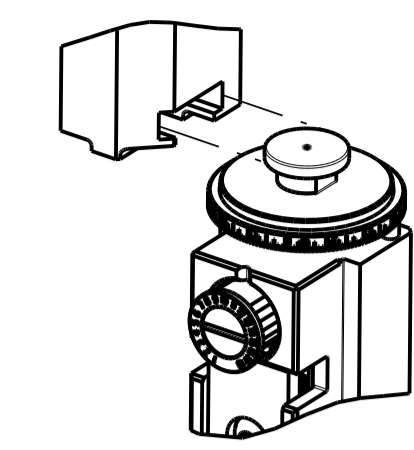


| PART NUMBER | REVISION | DESCRIPTION | FEED TYPE |
|-------------|----------|----------------------------------|------------|
| 2150662-1 | B | FINE CRIMP HEIGHT ADJUST | MECHANICAL |
| 2150662-2 | B | FINE CRIMP HEIGHT ADJUST | PNEUMATIC |
| 7-2150662-1 | B | MECHANICAL AND CRIMP TOOLING KIT | MECHANICAL |
| 7-2150662-2 | B | PNEUMATIC AND CRIMP TOOLING KIT | PNEUMATIC |
| 7-2150662-7 | A | CRIMP TOOLING KIT | - |

ATLANTIC VERSION TERMINATOR INTERFACE ADAPTER



| APPLICATOR DATA | | |
|--------------------------------|----------------|------|
| CRIMP | SIZE | TYPE |
| WIRE | 2.50 mm [.098] | F |
| INSUL | 4.20 mm [.165] | F |
| APPL INSTRUCTIONS 408-35043 | | |

| TERMINAL DATA: Stocko TERMINAL | | STOCKO CRIMP SPECIFICATION | |
|---|---------------------------------------|--|-----------------|
| TERMINAL NAME: TERMINAL | | | |
| WIRE STRIP LENGTH 4.87-5.63 mm [1.92-.222 IN] | | INSULATION DIAMETER RANGE Ø2.05-3.45 mm [0.081-.136 IN] | |
| TERMINAL APPLICATION SPECIFICATION F25T Rev 25/11/2005 | | | |
| TERMINALS APPLIED | | | |
| TE TERMINAL 2113989-1 | Stocko TERMINAL RSB 7858 F 6.3-2.5 | TE TERMINAL | Stocko TERMINAL |

| WIRE SIZE | CRIMP HEIGHT mm [INCH] | CRIMP HEIGHT REFERENCE SETTING |
|-----------|-----------------------------|--------------------------------|
| 2.50mm2 | 1.95+/-0.02 [0.077+/-0.001] | 5.6 |
| 2.03mm2 | 1.91+/-0.02 [0.075+/-0.001] | 6.3 |
| 1.50mm2 | 1.77+/-0.02 [0.070+/-0.001] | 7.3 |
| 1.00mm2 | 1.58+/-0.02 [0.062+/-0.001] | 9.7 |
| 0.82mm2 | 1.52+/-0.02 [0.060+/-0.001] | 10.3 |

- 1 RECOMMENDED SPARE PARTS
- 2 REFER TO SUPPLIED INSTRUCTION SHEET FOR CLEANING, LUBRICATION AND STORAGE OF APPLICATOR.
- 3 APPLY PART NUMBER 1-23419-5 LOCTITE TO THREADS OF ITEM 180. APPLY PART NUMBER 2-23419-6 LOCTITE TO THREADS OF ITEM 242.
- 4 CRIMP HEIGHT REFERENCE SETTING WAS THE SETTING USED WHEN THE APPLICATOR WAS QUALIFIED AT THE FACTORY. ADJUSTMENT MAY BE NECESSARY WHEN RUNNING APPLICATOR IN THE FIELD.
- 5. UNLESS SPECIFIED OTHERWISE TORQUE VALUES SHALL BE USED ER DOCUMENT, 101-35000.
- 6 2.5mm2 WIRE IS OUT OF THE TERMINAL RANGE PER STOCKO SPEC F25T.
- 7 TERMINAL LUBRICANT IS RECOMMENDED.

***WARNING**
ON INSTALLATION, SET WIRE DISC TO CRIMP HEIGHT REFERENCE SETTING FOR LARGEST WIRE SIZE. CRIMP HEIGHT REFERENCE SETTINGS GREATER THAN THE VALUE SHOWN MAY CAUSE DAMAGE TO THE CRIMP TOOLING, REFER TO THE INSTRUCTION SHEET FOR PROPER SETUP AND ADJUSTMENTS.

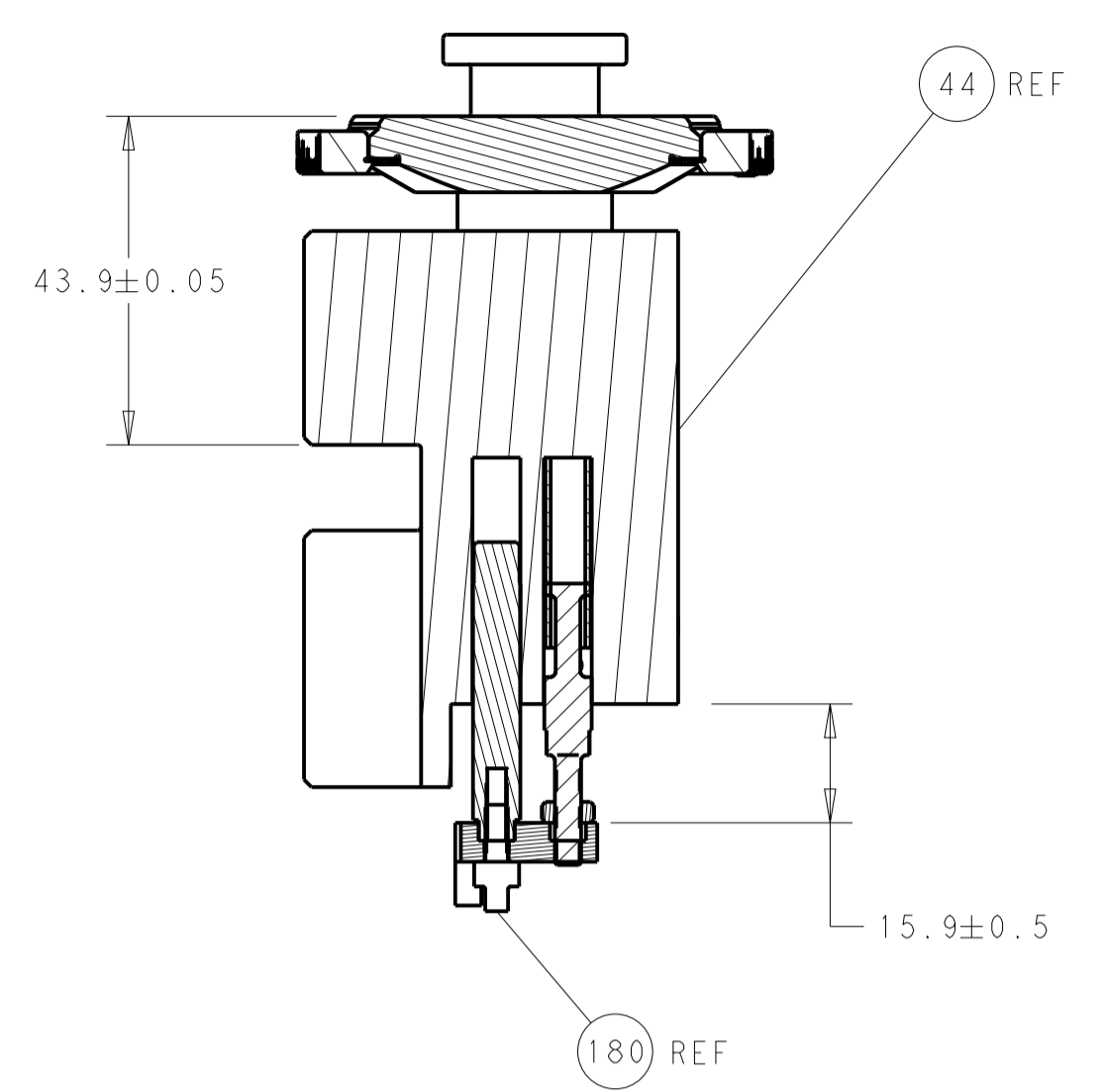
ATLANTIC VERSION
Shown on sheets 1 of 4 & 2 of 4
(Pacific version shown on sheets 3 of 4 & 4 of 4)

| LOC | DIST | REVISIONS | | | |
|-----|------|-----------|---------------|-----------|-------|
| A | 66 | REV | DATE | BY | APPV |
| | | A | RELEASED | 06JUN2016 | BW TE |
| | | B | ECR-21-006409 | 22JUN2021 | FZ TE |

| | | | | | | | | |
|---|-----|-----|-----|-----|-------------|-------------------------------------|------------------------------|---------|
| - | 1 | - | 1 | - | 2119641-1 | FEED CAM, AIR FEED | 248 | |
| - | 1 | 1 | 1 | 1 | 2119082-7 | CAM, SNAIL, INSULATION ADJUSTMENT | 244 | |
| - | 1 | 1 | 1 | 1 | 2079764-1 | WASHER, WAVE SPRING, CREST-TO-CREST | 243 | |
| - | 1 | 1 | 1 | 1 | 2119083-1 | RETAINER, INSULATION DIAL | 242 | |
| - | - | 1 | - | 1 | 2119580-1 | MECHANICAL FEED ASSEMBLY | 239 | |
| - | 1 | - | 1 | - | 2844940-3 | AIR FEED MODULE | 238 | |
| - | 1 | 1 | 1 | 1 | 1-18028-0 | WASHER, FLAT, REG M8 | 192 | |
| - | 1 | 1 | 1 | 1 | 1-1976055-1 | STANDOFF, HOLD-DOWN | 180 | |
| - | 1 | 1 | 1 | 1 | 6-993111-6 | PIN, SLOTTED SPRING 3.0 X 14.0 | 177 | |
| - | 1 | 1 | 1 | 1 | 8-22280-7 | SPRING, COMPRESSION | 176 | |
| - | 1 | 1 | 1 | 1 | 1752353-2 | GUIDE PIN,HOLDDOWN | 175 | |
| - | 1 | 1 | 1 | 1 | 1901680-2 | GUIDE PIN,HOLDDOWN | 174 | |
| - | REF | REF | REF | REF | 994970-2 | COUNTER, MAGNETIC | 164 | |
| - | 1 | 1 | 1 | 1 | 2119955-2 | ASSY, LUBRICATOR, END FEED | 84 | |
| - | 1 | 1 | 1 | 1 | 455888-5 | SPACER, CRIMPER | 82 | |
| - | 1 | 1 | 1 | 1 | 1803607-4 | DOCUMENTATION PACKAGE | 71 | |
| - | 2 | 2 | 2 | 2 | 2-18032-2 | SCR, SET, FLT PNT, M3 X 10.0 | 70 | |
| - | 1 | 1 | 1 | 1 | 2119740-1 | TAG, IDENTIFICATION | 67 | |
| - | 2 | 2 | 2 | 2 | 2168078-1 | SCREW, DRIVE, RH, RoHS, 2 x .188 | 66 | |
| - | 1 | 1 | 1 | 1 | 1901681-1 | HOLDDOWN, TERMINAL | 65 | |
| - | 2 | 2 | 2 | 2 | 2168400-8 | SHCS, LOW HEAD, RoHS, M4 X 16 | 64 | |
| - | 1 | 1 | 1 | 1 | 2168083-2 | SCR, SKT HD CAP, RoHS, M4 X 8.0 | 60 | |
| - | 1 | 1 | 1 | 1 | 5-18022-5 | SCR, HEX HD CAP, M4 X 6.0 | 59 | |
| - | - | 1 | - | 1 | 2063961-1 | FEED FINGER | 58 | |
| - | 3 | 3 | 3 | 3 | 2168400-4 | SHCS, LOW HEAD, RoHS, M4 X 8 | 57 | |
| - | 2 | 2 | 2 | 2 | 1-2168083-0 | SCR, SKT HD CAP, RoHS, M4 X 10 | 56 | |
| - | 2 | 2 | 2 | 2 | 5018030-1 | NUT, HEX, REG, RoHS, M3 | 54 | |
| - | 2 | 2 | 2 | 2 | 986965-8 | NUT, LOCK, HEX, TORQUE (M4) | 53 | |
| - | 1 | 1 | 1 | 1 | 1-5018030-0 | NUT, HEX, REG, RoHS, M3.5 | 52 | |
| - | 1 | - | 1 | - | 2063961-1 | FEED FINGER | 51 | |
| - | 1 | 2 | 1 | 2 | 18023-9 | SCR, SKT HD CAP M4 X 6.0 | 49 | |
| - | - | 1 | - | 1 | 2119652-1 | FEED CAM, PRE FEED | 48 | |
| - | - | 1 | - | 1 | 2119653-1 | FEED CAM, POST FEED | 47 | |
| - | 1 | 1 | 1 | 1 | 2119655-5 | APPLICATOR BASIC ASSEMBLY, EF | 46 | |
| - | 1 | 1 | 1 | 1 | 1803517-1 | RAM ASSEMBLY, EF ATLANTIC | 44 | |
| - | 1 | 1 | 1 | 1 | 1803602-1 | SCR, BHSC, RoHS (M8 X 25) | 41 | |
| - | 7 | 7 | 7 | 7 | 1-18028-2 | WASHER, FLAT, REG M4 | 33 | |
| - | 2 | 2 | 2 | 2 | 2168083-9 | SCR, SKT HD CAP, RoHS, M4 X 20 | 31 | |
| - | 2 | 2 | 2 | 2 | 2168083-2 | SCR, SKT HD CAP, RoHS, M4 X 8.0 | 29 | |
| - | 1 | 1 | 1 | 1 | 240639-1 | STRIPPER (MACHINING) | 27 | |
| - | 2 | 2 | 2 | 2 | 1-2168083-5 | SCR, SKT HD CAP, RoHS, M4 X 30 | 25 | |
| - | 1 | 1 | 1 | 1 | 1-1752371-4 | PLATE, STRIP GUIDE | 24 | |
| - | 1 | 1 | 1 | 1 | 240825-8 | PLATE, STRIP HOLD DOWN | 23 | |
| - | 2 | 2 | 2 | 2 | 2-22281-3 | SPRING, COMPRESSION | 22 | |
| - | 1 | 1 | 1 | 1 | 1803292-1 | DRAG | 20 | |
| - | 2 | 2 | 2 | 2 | 1901259-4 | GUIDE, LOWER STRIP | 18 | |
| - | 4 | 4 | 4 | 4 | 1-2079383-1 | SCR, BHSC, RoHS (M6 X 12) | 17 | |
| - | 1 | 1 | 1 | 1 | 1752360-1 | SPACER,HOLD-DOWN | 13 | |
| - | 1 | 1 | 1 | 1 | 240833-4 | PLATE, REAR SHEAR | 11 | |
| - | - | - | - | - | - | - | 10 | |
| - | 1 | 1 | 1 | 1 | 690482-4 | PLATE, FRONT SHEAR | 9 | |
| - | 1 | 2 | 2 | 1 | 1 | 4-1803059-6 | ANVIL, COMBINATION, END FEED | 8 |
| - | 1 | 1 | 1 | 1 | 1 | 1-2217206-0 | BLADE, SLUG | 7 |
| - | - | - | - | - | - | - | 6 | |
| - | 1 | 1 | 1 | 1 | 1 | 1-240641-8 | SPACER | 5 |
| - | 1 | 1 | 1 | 1 | 1 | 3-238011-1 | BLOCK, CRIMPER SPACER | 4 |
| - | 1 | 2 | 2 | 1 | 1 | 1803187-2 | CRIMPER, INSULATION F | 3 |
| - | 1 | 1 | 1 | 1 | 1 | 1-455888-2 | SPACER, CRIMPER | 2 |
| - | 1 | 2 | 2 | 1 | 1 | 1633588-1 | CRIMPER, WIRE | 1 |
| - | 77 | 72 | 71 | 2 | 1 | PART NO | DESCRIPTION | ITEM NO |

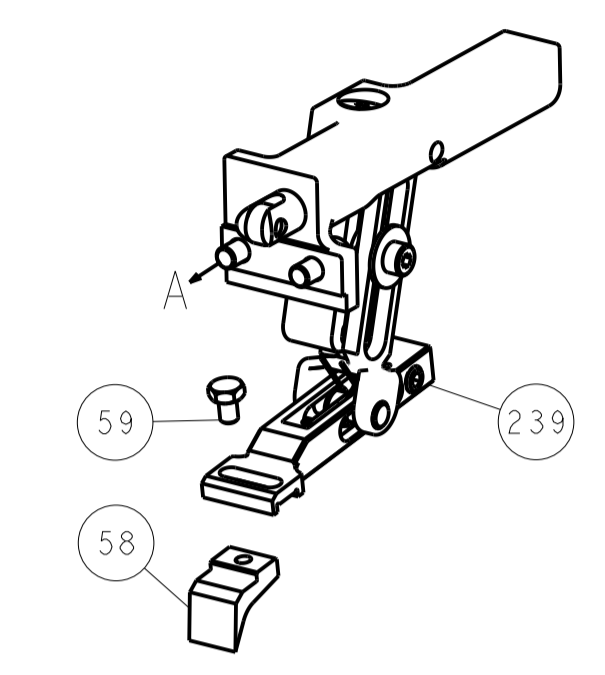
| DIMENSIONS: | | TOLERANCES UNLESS OTHERWISE SPECIFIED: | | DRAWING NO | |
|-------------|---------|--|---------|--|---------|
| mm | 0 PLC ± | 1 PLC ± | 2 PLC ± | 3 PLC ± | 4 PLC ± |
| ANGLES | ± | ± | ± | ± | ± |
| MATERIAL | | FINISH | | WEIGHT | |
| | | | | Customer Accessible Production Drawing | |
| | | | | SCALE 1:1 SHEET 1 OF 4 REV B | |

| LOC | DIST | REV | DATE | BY | APPV |
|-----------|------|-----|-------------|------|------|
| A | 66 | | | | |
| REVISIONS | | | DESCRIPTION | DATE | DWN |
| | | | SEE SHEET 1 | | |

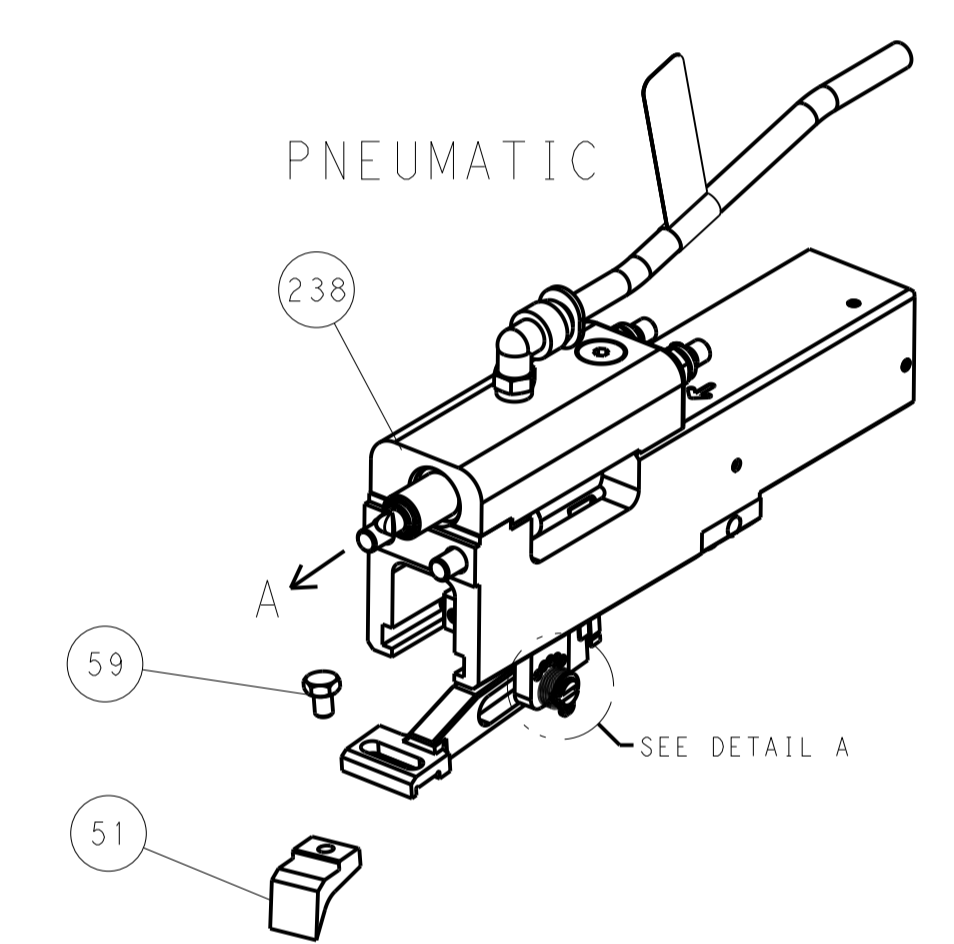


RAM AND HOLDDOWN SET-UP

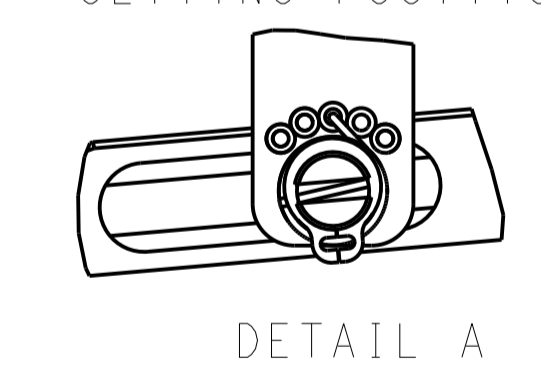
FEED TYPE
MECHANICAL



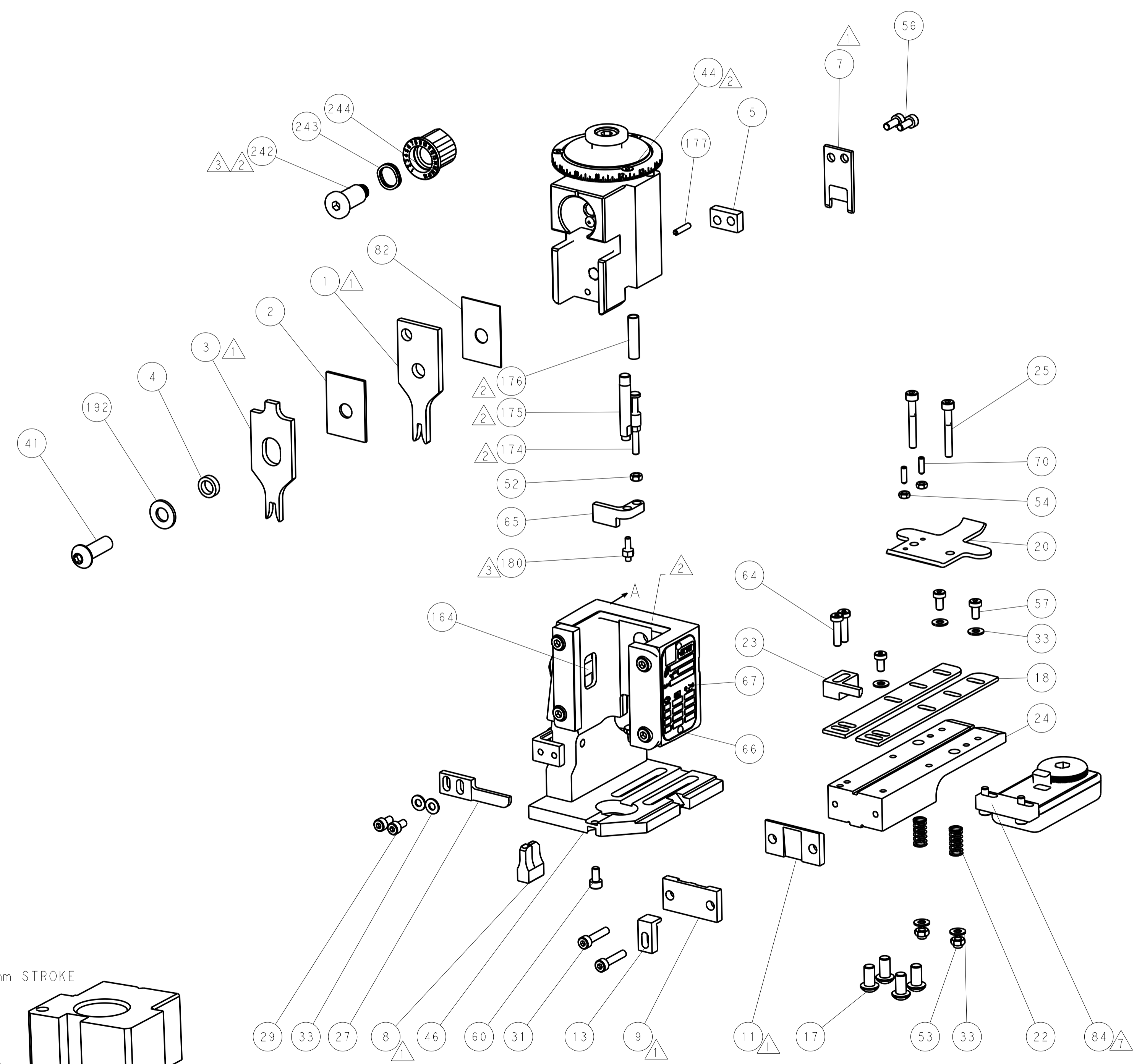
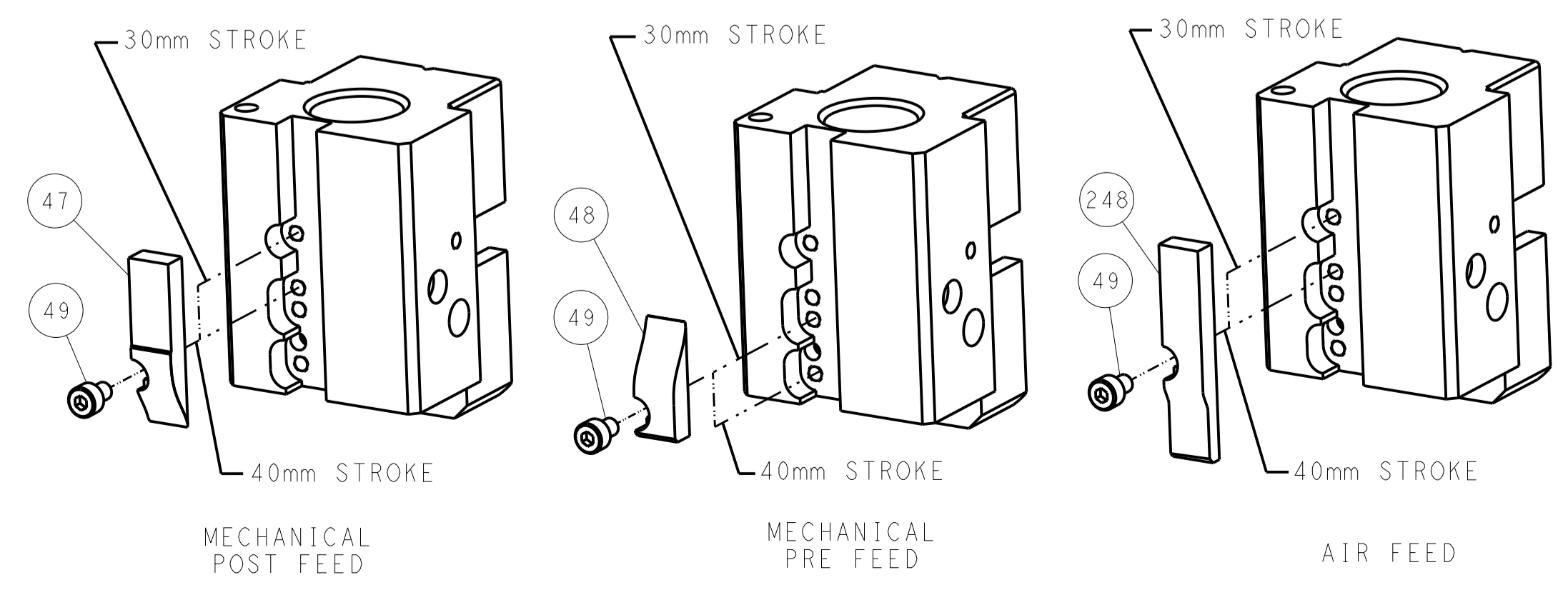
PNEUMATIC



FEED SPRING
SETTING POSITION



CAM POSITIONS

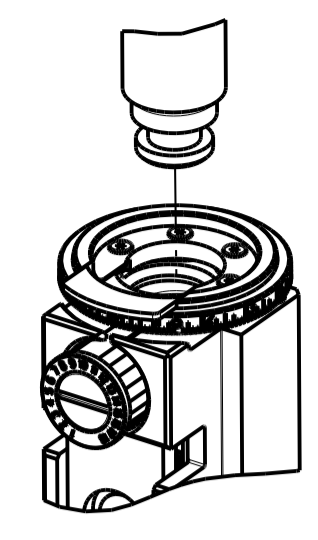


ATLANTIC VERSION
 Shown on sheets 1 of 4 & 2 of 4
 (Pacific version shown on sheets 3 of 4 & 4 of 4)

| | | | | |
|--|--------------------------|--|--|---|
| <small>THIS DRAWING IS UNPUBLISHED. RELEASED FOR PUBLICATION. 20 COPYRIGHT 20 BY TYCO ELECTRONICS CORPORATION. ALL RIGHTS RESERVED.</small> | | DWN - ZOMAR2014 CHK - ZOMAR2014 APVD - ZOMAR2014 | NAME - Ocean End Feed Applicator SIZE - A1 CAGE CODE - 00779 DRAWING NO - 2150662 | RESTRICTED TO CUSTOMER ACCESSIBLE PRODUCTION DRAWING |
| DIMENSIONS: mm TOLERANCES UNLESS OTHERWISE SPECIFIED: 0 PLC ± 1 PLC ± 2 PLC ± 3 PLC ± 4 PLC ± ANGLES ± | MATERIAL: - FINISH: - | WEIGHT: - SCALE: 1:1 | SHEET 2 OF 4 REV B | SHEETS 3 & 4 ARE NOT REQUIRED FOR ATLANTIC VERSION |

| PART NUMBER | REVISION | DESCRIPTION | FEED TYPE |
|-------------|----------|--------------------------|------------|
| 2-2150662-1 | B | FINE CRIMP HEIGHT ADJUST | MECHANICAL |
| 2-2150662-2 | B | FINE CRIMP HEIGHT ADJUST | PNEUMATIC |
| 7-2150662-7 | A | CRIMP TOOLING KIT | - |

PACIFIC VERSION TERMINATOR
 INTERFACE ADAPTER



| APPLICATOR DATA | | |
|--------------------------------|----------------|------|
| CRIMP | SIZE | TYPE |
| WIRE | 2.50 mm (.098) | F |
| INSUL | 4.20 mm (.165) | F |
| APPL INSTRUCTIONS 408-35043 | | |

| TERMINAL DATA: Stocko TERMINAL | | STOCKO CRIMP SPECIFICATION | |
|---|--------------------|---|-----------------|
| TERMINAL NAME: TERMINAL | | | |
| WIRE STRIP LENGTH 4.87-5.63 mm (.192-.222 IN) | | INSULATION DIAMETER RANGE Ø2.05-3.45 mm (.081-.136 IN) | |
| TERMINAL APPLICATION SPECIFICATION F257 Rev 25/11/2005 | | | |
| TERMINALS APPLIED | | | |
| TE TERMINAL | Stocko TERMINAL | TE TERMINAL | Stocko TERMINAL |
| 2113989-1 | RSB 7858 F 6.3-2.5 | | |

| WIRE SIZE | CRIMP HEIGHT mm [INCH] | CRIMP HEIGHT REFERENCE SETTING |
|-----------|----------------------------|--------------------------------|
| 2.50mm2 | 1.95+/-0.02 [.077+/-0.001] | 5.6 |
| 2.03mm2 | 1.91+/-0.02 [.075+/-0.001] | 6.3 |
| 1.50mm2 | 1.77+/-0.02 [.070+/-0.001] | 7.3 |
| 1.00mm2 | 1.58+/-0.02 [.062+/-0.001] | 9.7 |
| 0.82mm2 | 1.52+/-0.02 [.060+/-0.001] | 10.3 |

- 1 RECOMMENDED SPARE PARTS
- 2 REFER TO SUPPLIED INSTRUCTION SHEET FOR CLEANING, LUBRICATION AND STORAGE OF APPLICATOR.
- 3 APPLY PART NUMBER 1-23419-5 LOCTITE TO THREADS OF ITEM 180. APPLY PART NUMBER 2-23419-6 LOCTITE TO THREADS OF ITEM 242.
- 4 CRIMP HEIGHT REFERENCE SETTING WAS THE SETTING USED WHEN THE APPLICATOR WAS QUALIFIED AT THE FACTORY. ADJUSTMENT MAY BE NECESSARY WHEN RUNNING APPLICATOR IN THE FIELD.
- 5 UNLESS SPECIFIED OTHERWISE TORQUE VALUES SHALL BE USED ER DOCUMENT, 101-35000.
- 6 2.5mm2 WIRE IS OUT OF THE TERMINAL RANGE PER STOCKO SPEC F257.
- 7 TERMINAL LUBRICANT IS RECOMMENDED.

***WARNING**
 ON INSTALLATION, SET WIRE DISC TO CRIMP HEIGHT REFERENCE SETTING FOR LARGEST WIRE SIZE. CRIMP HEIGHT REFERENCE SETTINGS GREATER THAN THE VALUE SHOWN MAY CAUSE DAMAGE TO THE CRIMP TOOLING, REFER TO THE INSTRUCTION SHEET FOR PROPER SETUP AND ADJUSTMENTS.

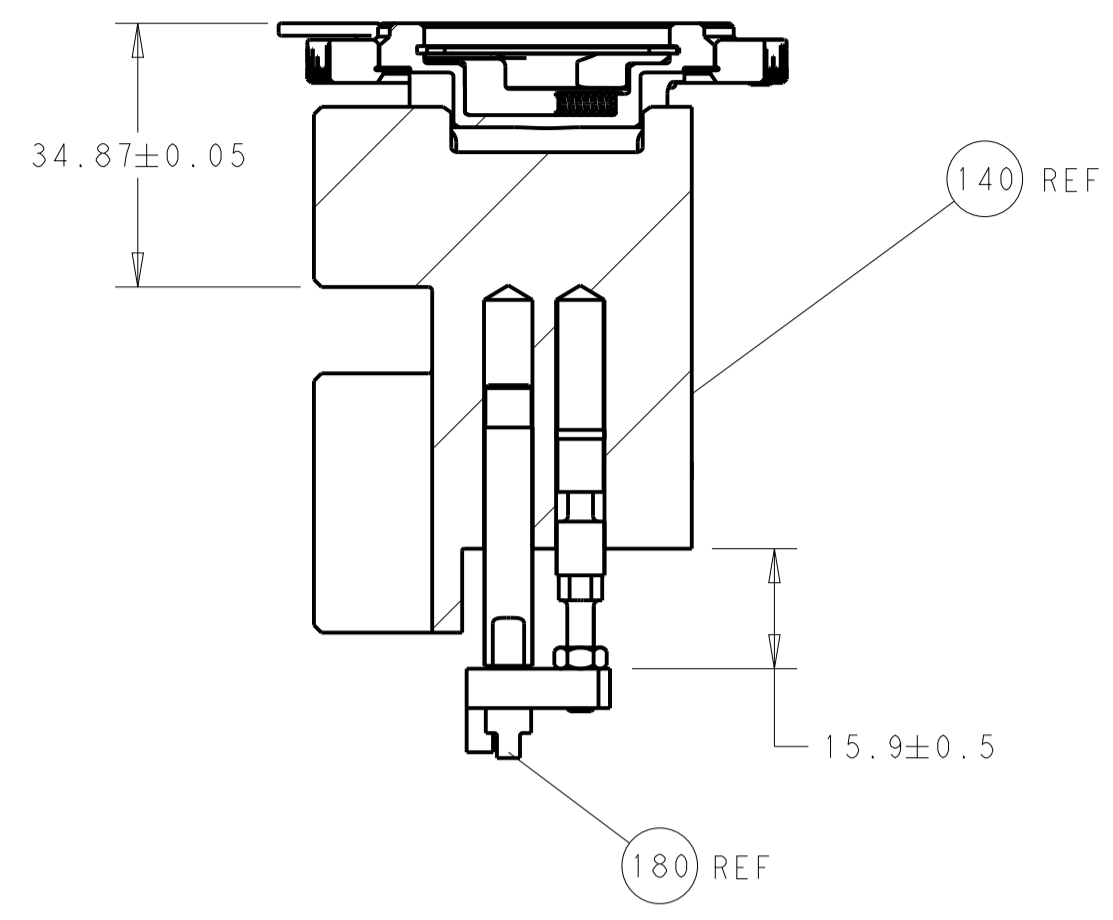
PACIFIC VERSION
 Shown on sheets 3 of 4 & 4 of 4
 (Atlantic version shown on sheets 1 of 4 & 2 of 4)

| LOC | DIST | REVISIONS | | | |
|-----|------|-------------|------|----|------|
| A | 66 | REV | DATE | BY | APPV |
| - | - | SEE SHEET 1 | - | - | - |

| | | | | | |
|---|-----|-----|-------------|-------------------------------------|-------------|
| - | 1 | 1 | 2119082-7 | CAM, SNAIL, INSULATION ADJUSTMENT | 244 |
| - | 1 | 1 | 2079764-1 | WASHER, WAVE SPRING, CREST-TO-CREST | 243 |
| 3 | - | 1 | 2119083-1 | RETAINER, INSULATION DIAL | 242 |
| - | - | 1 | 2119580-1 | MECHANICAL FEED ASSEMBLY | 239 |
| - | 1 | - | 2844940-3 | AIR FEED MODULE | 238 |
| - | 1 | 1 | 1-18028-0 | WASHER, FLAT, REG M8 | 192 |
| - | 4 | 4 | 2079383-9 | SCR, BHSC, RoHS (M6 X 20) | 186 |
| 3 | - | 1 | 1-1976055-1 | STANDOFF, HOLD-DOWN | 180 |
| - | 1 | 1 | 6-993111-6 | PIN, SLOTTED SPRING 3.0 X 14.0 | 177 |
| - | 1 | 1 | 8-22280-7 | SPRING, COMPRESSION | 176 |
| - | 1 | 1 | 1752353-2 | GUIDE PIN, HOLDDOWN | 175 |
| - | 1 | 1 | 1901680-2 | GUIDE PIN, HOLDDOWN | 174 |
| - | REF | REF | 994970-2 | COUNTER, MAGNETIC | 164 |
| - | 1 | - | 2119641-2 | FEED CAM, AIR FEED | 152 |
| - | 1 | 1 | 2168083-8 | SCR, SKT HD CAP, RoHS, M4 X 16 | 144 |
| - | - | 1 | 2119653-2 | FEED CAM, POST FEED | 142 |
| - | 1 | 1 | 2119655-6 | APPLICATOR BASIC ASSEMBLY, EF | 141 |
| - | 1 | 1 | 1803518-1 | RAM ASSEMBLY, EF PACIFIC | 140 |
| 7 | - | 1 | 2119955-2 | ASSY, LUBRICATOR, END FEED | 84 |
| - | 1 | 1 | 455888-5 | SPACER, CRIMPER | 82 |
| - | 1 | 1 | 1803607-4 | DOCUMENTATION PACKAGE | 71 |
| - | 2 | 2 | 2-18032-2 | SCR, SET, FLT PNT, M3 X 10.0 | 70 |
| - | 1 | 1 | 2119740-1 | TAG, IDENTIFICATION | 67 |
| - | 2 | 2 | 2168078-1 | SCREW, DRIVE, RH, RoHS, 2 x .188 | 66 |
| - | 1 | 1 | 1901681-1 | HOLDDOWN, TERMINAL | 65 |
| - | 2 | 2 | 2168400-8 | SHCS, LOW HEAD, RoHS, M4 X 16 | 64 |
| - | 1 | 1 | 5-18022-5 | SCR, HEX HD CAP, M4 X 6.0 | 59 |
| - | - | 1 | 2063961-1 | FEED FINGER | 58 |
| - | 3 | 3 | 2168400-4 | SHCS, LOW HEAD, RoHS, M4 X 8 | 57 |
| - | 2 | 2 | 1-2168083-0 | SCR, SKT HD CAP, RoHS, M4 X 10 | 56 |
| - | 2 | 2 | 5018030-1 | NUT, HEX, REG, RoHS, M3 | 54 |
| - | 2 | 2 | 986965-8 | NUT, LOCK, HEX, TORQUE (M4) | 53 |
| - | 1 | 1 | 1-5018030-0 | NUT, HEX, REG, RoHS, M3.5 | 52 |
| - | 1 | - | 2063961-1 | FEED FINGER | 51 |
| - | 1 | 2 | 18023-9 | SCR, SKT HD CAP M4 X 6.0 | 49 |
| - | - | 1 | 2119652-1 | FEED CAM, PRE FEED | 48 |
| - | 1 | 1 | 1803602-1 | SCR, BHSC, RoHS (M8 X 25) | 41 |
| - | 7 | 7 | 1-18028-2 | WASHER, FLAT, REG M4 | 33 |
| - | 2 | 2 | 2168083-9 | SCR, SKT HD CAP, RoHS, M4 X 20 | 31 |
| - | 2 | 2 | 2168083-2 | SCR, SKT HD CAP, RoHS, M4 X 8.0 | 29 |
| - | 1 | 1 | 240639-1 | STRIPPER (MACHINING) | 27 |
| - | 2 | 2 | 1-2168083-5 | SCR, SKT HD CAP, RoHS, M4 X 30 | 25 |
| - | 1 | 1 | 1-1752371-4 | PLATE, STRIP GUIDE | 24 |
| - | 1 | 1 | 240825-8 | PLATE, STRIP HOLD DOWN | 23 |
| - | 2 | 2 | 2-22281-3 | SPRING, COMPRESSION | 22 |
| - | 1 | 1 | 1803292-1 | DRAG | 20 |
| - | 2 | 2 | 1901259-4 | GUIDE, LOWER STRIP | 18 |
| - | 1 | 1 | 1752360-1 | SPACER, HOLD-DOWN | 13 |
| 1 | - | 1 | 240833-4 | PLATE, REAR SHEAR | 11 |
| - | - | - | - | - | 10 |
| 1 | - | 1 | 690482-4 | PLATE, FRONT SHEAR | 9 |
| 1 | 1 | 1 | 4-1803059-6 | ANVIL, COMBINATION, END FEED | 8 |
| 1 | - | 1 | 1-2217206-0 | BLADE, SLUG | 7 |
| - | - | - | - | - | 6 |
| - | 1 | 1 | 1-240641-8 | SPACER | 5 |
| - | 1 | 1 | 3-238011-1 | BLOCK, CRIMPER SPACER | 4 |
| 1 | 1 | 1 | 1803187-2 | CRIMPER, INSULATION F | 3 |
| - | 1 | 1 | 1-455888-2 | SPACER, CRIMPER | 2 |
| 1 | 1 | 1 | 1633588-1 | CRIMPER, WIRE | 1 |
| - | 77 | 22 | 21 | PART NO | DESCRIPTION |
| - | - | - | - | - | ITEM NO |

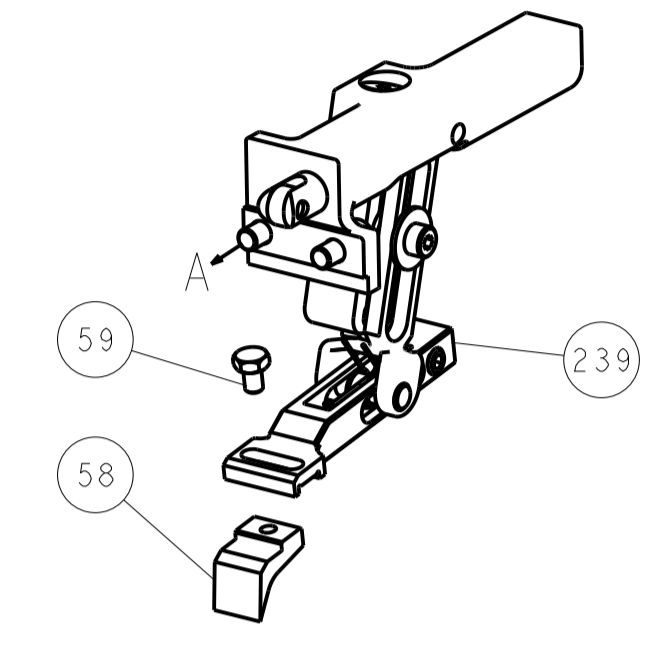
| | | | | | | | | | | | | | |
|--|--|--|--|-----------------------|--|-------------------------|--|--------------------------|--|---------------------|--|---|--|
| DIMENSIONS: mm | | TOLERANCES UNLESS OTHERWISE SPECIFIED: | | DWG: J. HOU 21APR2016 | | CHK: L. ZHANG 21APR2016 | | APVD: L. ZHANG 21APR2016 | | NAME: J. HOU | | TE Connectivity Harrisburg, PA 17105-3608 | |
| 0 PLC ± | | 1 PLC ± | | 2 PLC ± | | 3 PLC ± | | 4 PLC ± | | PRODUCT SPEC | | Ocean End Feed Applicator | |
| MATERIAL: | | FINISH: | | WEIGHT: | | SIZE: A1 00779 | | CAGE CODE: C=2150662 | | DRAWING NO: 2150662 | | RESTRICTED TO: | |
| Customer Accessible Production Drawing | | | | | | | | | | SCALE: 1:1 | | SHEET 3 OF 4 | |

| REVISONS | | DATE | DWN | APVD |
|-------------|------|------|-----|------|
| LOC | DIST | | | |
| A | 66 | | | |
| DESCRIPTION | | | | |
| SEE SHEET 1 | | | | |

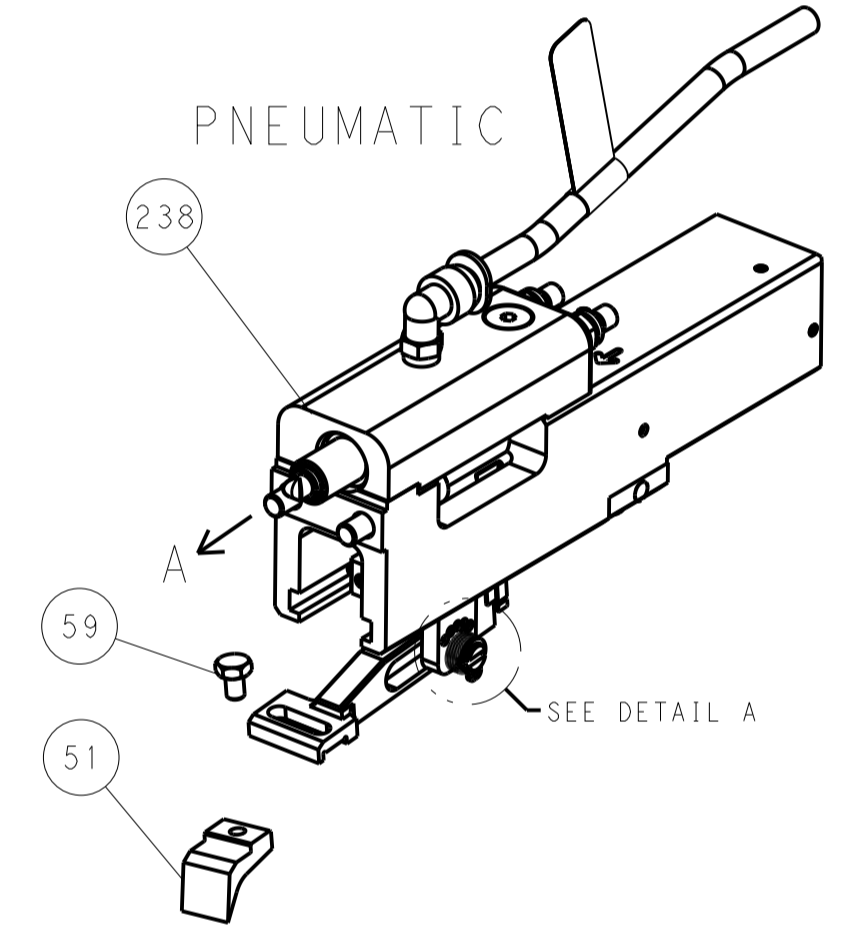


RAM AND HOLDDOWN SET-UP

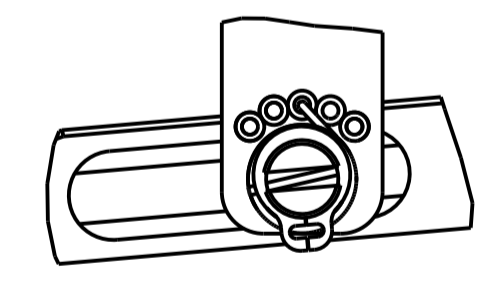
FEED TYPE
MECHANICAL



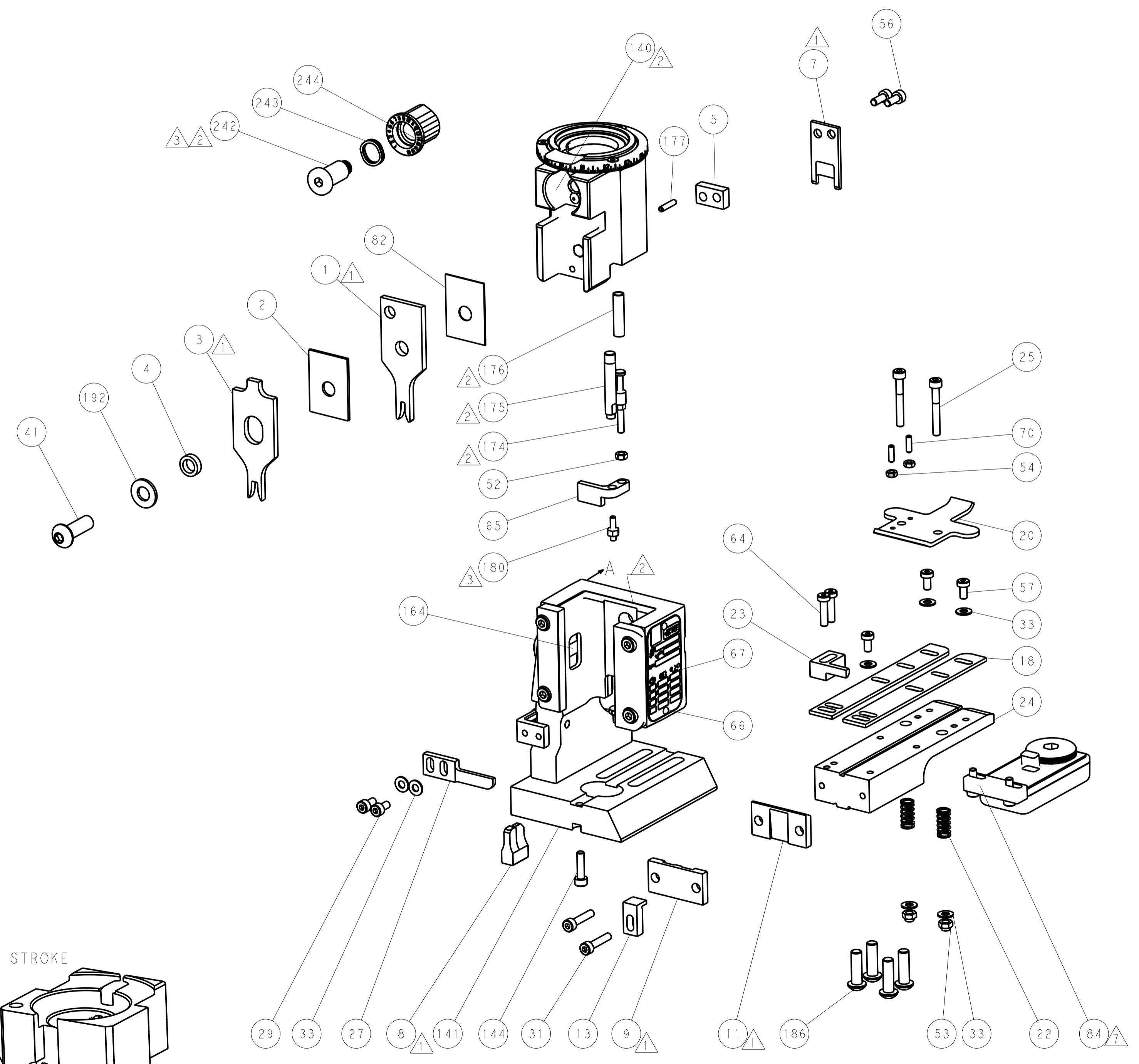
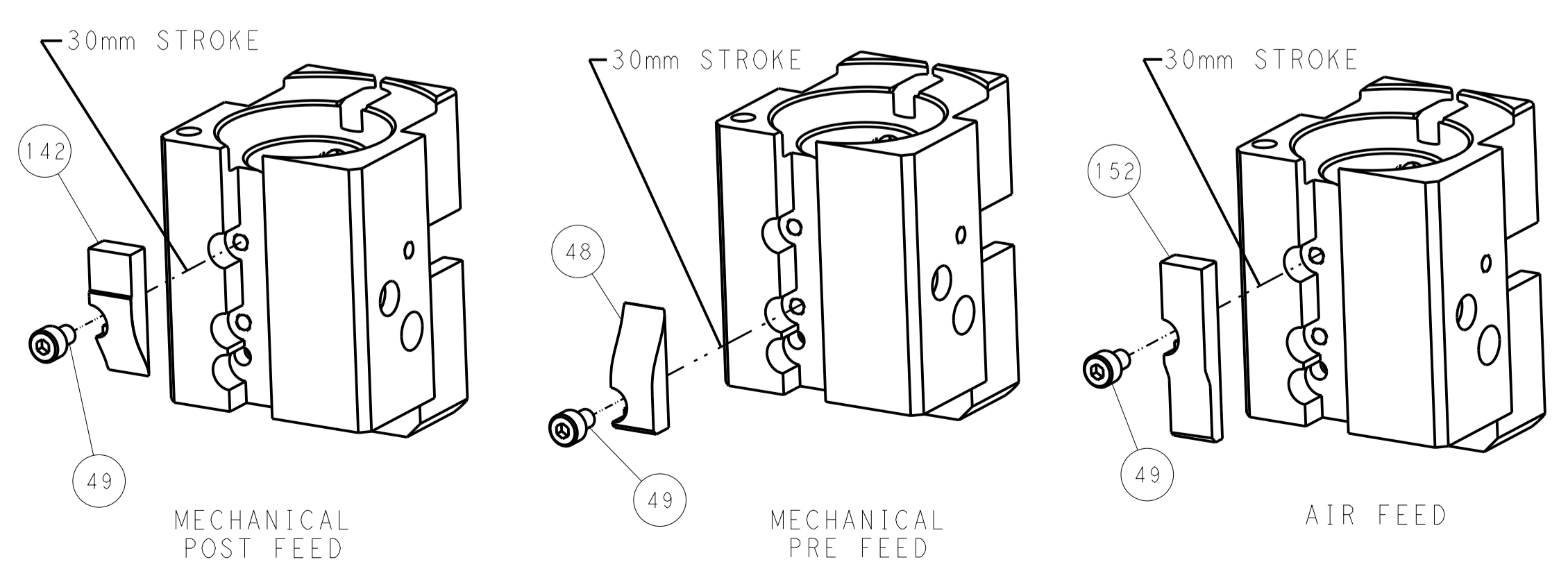
PNEUMATIC



FEED SPRING
SETTING POSITION



CAM POSITIONS



PACIFIC VERSION
 Shown on sheets 3 of 4 & 4 of 4
 (Atlantic version shown on sheets 1 of 4 & 2 of 4)

| | | | | | | | |
|-------------|--|--|--|--|--|------------------------------|--|
| DIMENSIONS: | | TOLERANCES UNLESS OTHERWISE SPECIFIED: | | DWN - ZOMAR2014 | | TE Connectivity | |
| mm | | 0 PLC ± | | CHK - ZOMAR2014 | | Harrisburg, PA 17105-3608 | |
| Ø | | 1 PLC ± | | APVD - ZOMAR2014 | | NAME | |
| MATERIAL | | 2 PLC ± | | PRODUCT SPEC | | Ocean End Feed | |
| | | 3 PLC ± | | APPLICATION SPEC | | Applicator | |
| | | 4 PLC ± | | WEIGHT | | SIZE CAGE CODE DRAWING NO | |
| | | ANGLES ± | | A 00779 ©=2150662 | | RESTRICTED TO | |
| | | | | Customer Accessible Production Drawing | | SCALE 1:1 SHEET 4 OF 4 REV B | |