

| PART NUMBER | REVISION | DESCRIPTION                      | FEED TYPE  |
|-------------|----------|----------------------------------|------------|
| 2150755-1   | C        | FINE CRIMP HEIGHT ADJUST         | MECHANICAL |
| 2150755-2   | C        | FINE CRIMP HEIGHT ADJUST         | PNEUMATIC  |
| 7-2150755-1 | C        | MECHANICAL AND CRIMP TOOLING KIT | MECHANICAL |
| 7-2150755-2 | C        | PNEUMATIC AND CRIMP TOOLING KIT  | PNEUMATIC  |
| 7-2150755-7 | A        | CRIMP TOOLING KIT                | -          |

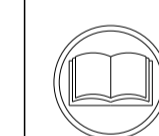
ATLANTIC VERSION TERMINATOR INTERFACE ADAPTER



| APPLICATOR DATA                |                  |      |
|--------------------------------|------------------|------|
| CRIMP                          | SIZE             | TYPE |
| WIRE                           | 3.56 mm [ .140 ] | F    |
| INSUL                          | -                | -    |
| APPL INSTRUCTIONS<br>408-35043 |                  |      |

| TERMINAL DATA: TE TERMINAL         |             | TE CRIMP SPECIFICATION         |             |
|------------------------------------|-------------|--------------------------------|-------------|
| TERMINAL NAME: TERMINAL, SPADE     |             |                                |             |
| WIRE STRIP LENGTH                  |             | INSULATION DIAMETER RANGE      |             |
| 5.34-6.10 mm [ .210-.240 IN ]      |             | Ø1.97-2.62 mm [ .078-.103 IN ] |             |
| TERMINAL APPLICATION SPECIFICATION | 114-2084    |                                |             |
| TERMINALS APPLIED                  |             |                                |             |
| TE TERMINAL                        | TE TERMINAL | TE TERMINAL                    | TE TERMINAL |
| 41473                              | 40577       | 40705                          |             |

| WIRE SIZE | CRIMP HEIGHT mm [INCH]       | CRIMP HEIGHT REFERENCE SETTING |
|-----------|------------------------------|--------------------------------|
| 14 AWG    | 2.26+/-0.05 [ .089+/- .002 ] | 6.8                            |
| 16 AWG    | 2.08+/-0.05 [ .082+/- .002 ] | 9.0                            |
| 18 AWG    | 1.98+/-0.05 [ .078+/- .002 ] | 10.2                           |



- 1 RECOMMENDED SPARE PARTS
- 2 REFER TO SUPPLIED INSTRUCTION SHEET FOR CLEANING, LUBRICATION AND STORAGE OF APPLICATOR.
- 3 APPLY PART NUMBER 1-23419-5 LOCTITE TO THREADS OF ITEMS 180.
- 4 CRIMP HEIGHT REFERENCE SETTING WAS THE SETTING USED WHEN THE APPLICATOR WAS QUALIFIED AT THE FACTORY. ADJUSTMENT MAY BE NECESSARY WHEN RUNNING APPLICATOR IN THE FIELD.
- 5. UNLESS SPECIFIED OTHERWISE TORQUE VALUES SHALL BE USED PER DOCUMENT, 101-35000.

**\*WARNING**  
ON INSTALLATION, SET WIRE DISC TO CRIMP HEIGHT REFERENCE SETTING FOR LARGEST WIRE SIZE. CRIMP HEIGHT REFERENCE SETTINGS GREATER THAN THE VALUE SHOWN MAY CAUSE DAMAGE TO THE CRIMP TOOLING, REFER TO THE INSTRUCTION SHEET FOR PROPER SETUP AND ADJUSTMENTS.

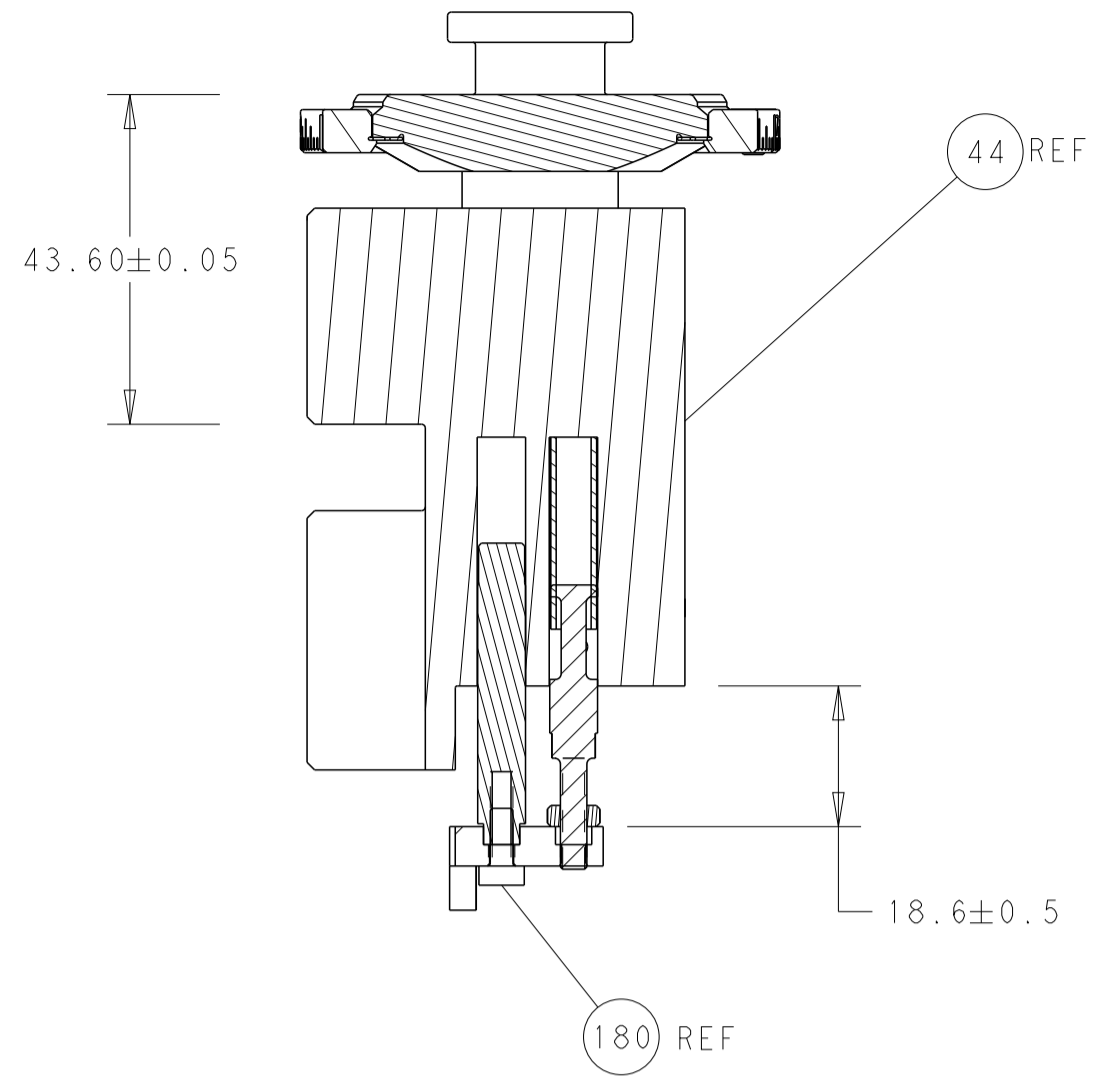
ATLANTIC VERSION  
Shown on sheets 1 of 4 & 2 of 4  
(Pacific version shown on sheets 3 of 4 & 4 of 4)

| LOC | DIST | REVISIONS |     |               |           |     |      |
|-----|------|-----------|-----|---------------|-----------|-----|------|
| A   | 66   | P         | LTN | DESCRIPTION   | DATE      | DWN | APVD |
|     |      | A         |     | RELEASED      | 18NOV2016 | LG  | CT   |
|     |      | B         |     | ECR-20-016921 | 30NOV2020 | FJ  | TE   |
|     |      | C         |     | ECR-21-002392 | 24FEB2021 | TB  | RK   |
|     |      | C         |     | ECR-21-002392 | 24FEB2021 | TB  | RK   |

|   |     |     |     |     |             |                                       |             |         |
|---|-----|-----|-----|-----|-------------|---------------------------------------|-------------|---------|
| - | 1   | -   | 1   | -   | 2119641-1   | FEED CAM, AIR FEED                    | 248         |         |
| - | -   | 1   | -   | 1   | 2119580-1   | MECHANICAL FEED ASSEMBLY              | 239         |         |
| - | 1   | -   | 1   | -   | 2844940-4   | AIR FEED MODULE                       | 238         |         |
| - | 1   | 1   | 1   | 1   | 3-1752354-6 | STANDOFF, HOLD-DOWN                   | 180         |         |
| - | 1   | 1   | 1   | 1   | 6-993111-6  | PIN, SLOTTED SPRING 3.0 X 14.0        | 177         |         |
| - | 1   | 1   | 1   | 1   | 8-22280-7   | SPRING, COMPRESSION                   | 176         |         |
| - | 1   | 1   | 1   | 1   | 1752353-2   | GUIDE PIN, HOLDDOWN                   | 175         |         |
| - | 1   | 1   | 1   | 1   | 1901680-2   | GUIDE PIN, HOLDDOWN                   | 174         |         |
| - | REF | REF | REF | REF | 994970-2    | COUNTER, MAGNETIC                     | 164         |         |
| - | 1   | 1   | 1   | 1   | 2079383-4   | SCR, BHSC, RoHS (M4 X 8)              | 146         |         |
| - | 1   | 1   | 1   | 1   | 455888-5    | SPACER, CRIMPER                       | 82          |         |
| - | 1   | 1   | 1   | 1   | 1803607-4   | DOCUMENTATION PACKAGE                 | 71          |         |
| - | 2   | 2   | 2   | 2   | 2-18032-2   | SCR, SET, FLT PNT, M3 X 10.0          | 70          |         |
| - | 1   | 1   | 1   | 1   | 2119740-1   | TAG, IDENTIFICATION                   | 67          |         |
| - | 2   | 2   | 2   | 2   | 2168078-1   | SCREW, DRIVE, RH, RoHS, 2 x .188      | 66          |         |
| - | 1   | 1   | 1   | 1   | 1901681-5   | HOLDDOWN, TERMINAL                    | 65          |         |
| - | 1   | 1   | 1   | 1   | 2168083-2   | SCR, SKT HD CAP, RoHS, M4 X 8.0       | 60          |         |
| - | 1   | 1   | 1   | 1   | 5-18022-5   | SCR, HEX HD CAP, M4 X 6.0             | 59          |         |
| - | -   | 1   | -   | 1   | 2063961-1   | FEED FINGER                           | 58          |         |
| - | 3   | 3   | 3   | 3   | 2168400-4   | SHCS, LOW HEAD, RoHS, M4 X 8          | 57          |         |
| - | 2   | 2   | 2   | 2   | 2168083-2   | SCR, SKT HD CAP, RoHS, M4 X 8.0       | 56          |         |
| - | 2   | 2   | 2   | 2   | 5018030-1   | NUT, HEX, REG, RoHS, M3               | 54          |         |
| - | 2   | 2   | 2   | 2   | 986965-8    | NUT, LOCK, HEX, TORQUE (M4)           | 53          |         |
| - | 1   | 1   | 1   | 1   | 1-5018030-0 | NUT, HEX, REG, RoHS, M3.5             | 52          |         |
| - | 1   | -   | 1   | -   | 2063961-1   | FEED FINGER                           | 51          |         |
| - | -   | 1   | -   | 1   | 18023-9     | SCR, SKT HD CAP M4 X 6.0              | 49          |         |
| - | -   | 1   | -   | 1   | 2119652-1   | FEED CAM, PRE FEED                    | 48          |         |
| - | -   | 1   | -   | 1   | 2119653-1   | FEED CAM, POST FEED                   | 47          |         |
| - | 1   | 1   | 1   | 1   | 2119655-5   | APPLICATOR BASIC ASSEMBLY, EF         | 46          |         |
| - | 1   | 1   | 1   | 1   | 1803517-1   | RAM ASSEMBLY, EF ATLANTIC             | 44          |         |
| - | 1   | 1   | 1   | 1   | 1803602-3   | SCR, BHSC, RoHS (M8 X 12)             | 41          |         |
| - | 8   | 8   | 8   | 8   | 1-18028-2   | WASHER, FLAT, REG M4                  | 33          |         |
| - | 2   | 2   | 2   | 2   | 2168083-9   | SCR, SKT HD CAP, RoHS, M4 X 20        | 31          |         |
| - | 2   | 2   | 2   | 2   | 2168083-2   | SCR, SKT HD CAP, RoHS, M4 X 8.0       | 29          |         |
| - | 1   | 1   | 1   | 1   | 240639-4    | STRIPPER (MACHINING)                  | 27          |         |
| - | 2   | 2   | 2   | 2   | 1-2168083-5 | SCR, SKT HD CAP, RoHS, M4 X 30        | 25          |         |
| - | 1   | 1   | 1   | 1   | 1752371-3   | PLATE, STRIP GUIDE                    | 24          |         |
| - | 2   | 2   | 2   | 2   | 2-22281-3   | SPRING, COMPRESSION                   | 22          |         |
| - | 1   | 1   | 1   | 1   | 1803292-4   | DRAG                                  | 20          |         |
| - | 1   | 1   | 1   | 1   | 1-1901696-8 | STRIP GUIDE, REAR                     | 19          |         |
| - | 1   | 1   | 1   | 1   | 1-1901695-8 | STRIP GUIDE, FRONT                    | 18          |         |
| - | 4   | 4   | 4   | 4   | 1-2079383-1 | SCR, BHSC, RoHS (M6 X 12)             | 17          |         |
| - | 1   | 1   | 1   | 1   | 3-240641-9  | SPACER                                | 16          |         |
| - | 1   | 1   | 1   | 1   | 1752360-1   | SPACER, HOLD-DOWN                     | 13          |         |
| - | 1   | 1   | 1   | 1   | 240833-2    | PLATE, REAR SHEAR                     | 11          |         |
| - | 2   | 2   | 2   | 2   | 240645-7    | SPACER, SHEAR PLATE                   | 10          |         |
| - | 1   | 1   | 1   | 1   | 1-240642-0  | PLATE, FRONT SHEAR                    | 9           |         |
| - | 1   | 2   | 2   | 1   | 1-1333224-7 | ANVIL, COMBINATION (E.F. WIRE/B ONLY) | 8           |         |
| - | 1   | 1   | 1   | 1   | 1-240651-5  | BLADE, SLUG                           | 7           |         |
| - | -   | -   | -   | -   | -           | -                                     | 6           |         |
| - | 1   | 1   | 1   | 1   | 240641-5    | SPACER                                | 5           |         |
| - | -   | -   | -   | -   | -           | -                                     | 4           |         |
| - | -   | -   | -   | -   | -           | -                                     | 3           |         |
| - | -   | -   | -   | -   | -           | -                                     | 2           |         |
| - | 1   | 2   | 2   | 1   | 1-456411-4  | CRIMPER, WIRE PREMIUM                 | 1           |         |
| - | 77  | 72  | 71  | 2   | -1          | PART NO                               | DESCRIPTION | ITEM NO |

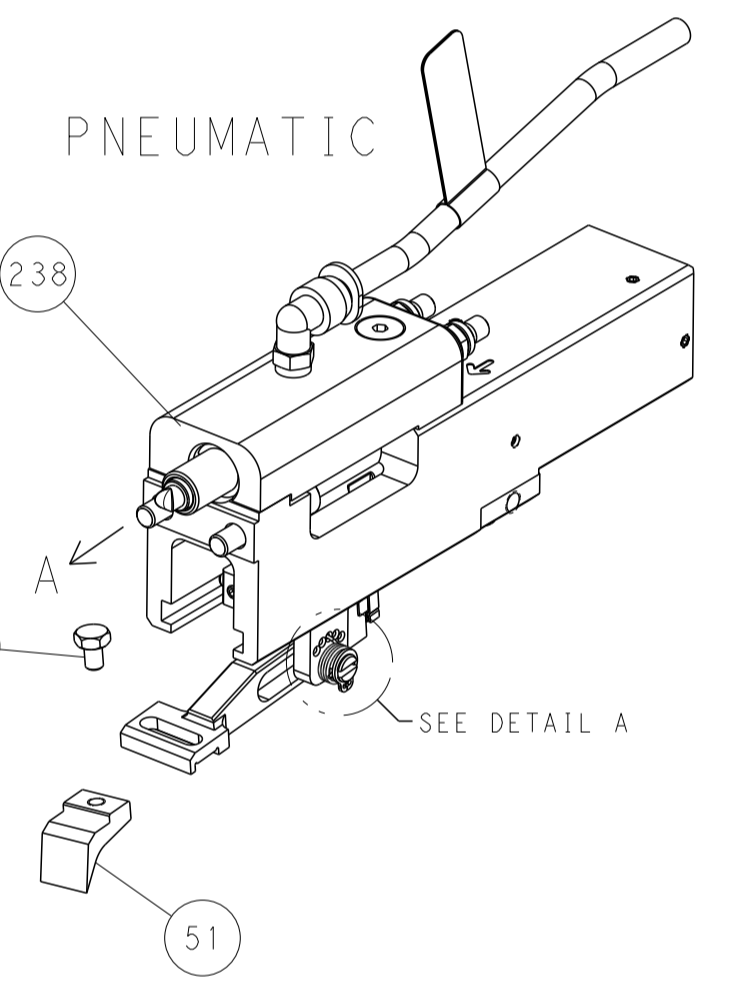
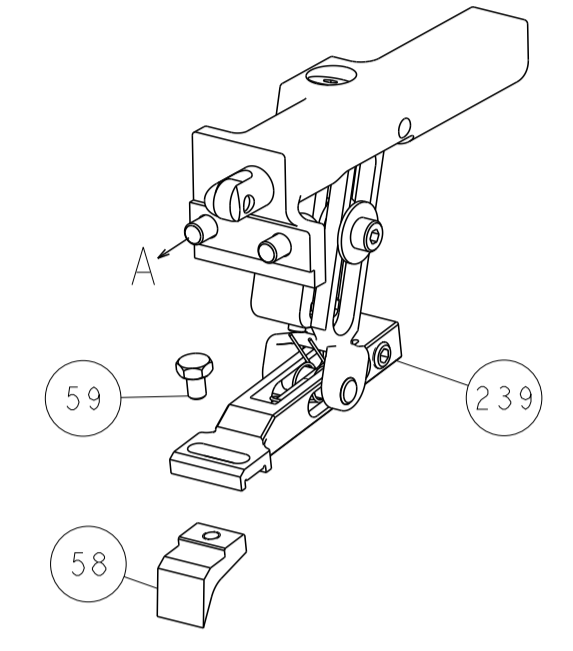
|                       |  |   |  |   |  |   |  |
|-----------------------|--|---|--|---|--|---|--|
| DIMENSIONS:<br>mm<br> |  | TOLERANCES UNLESS OTHERWISE SPECIFIED:<br>0 PLC ±<br>1 PLC ±<br>2 PLC ±<br>3 PLC ±<br>4 PLC ±<br>ANGLES ±<br>FINISH |  | DWN M. RILEY 27OCT2016<br>CHK C. TOPPER 27OCT2016<br>APVD J. DEGRANGE 27OCT2016<br>PRODUCT SPEC<br>APPLICATION SPEC<br>MATERIAL<br>FINISH |  | TE Connectivity<br>Harrisburg, PA 17105-3608<br>NAME<br>Ocean End Feed<br>Applicator<br>SIZE CAGE CODE DRAWING NO<br>A1 00779 ©=2150755<br>RESTRICTED TO<br>Customer Accessible Production Drawing SCALE 1:1 SHEET 1 OF 4 REV C |  |
|-----------------------|--|---|--|---|--|---|--|

| LOC | DIST | REV | DESCRIPTION | DATE | OWN | APVD |
|-----|------|-----|-------------|------|-----|------|
| A   | 66   |     | SEE SHEET 1 |      |     |      |
|     |      |     |             |      |     |      |
|     |      |     |             |      |     |      |

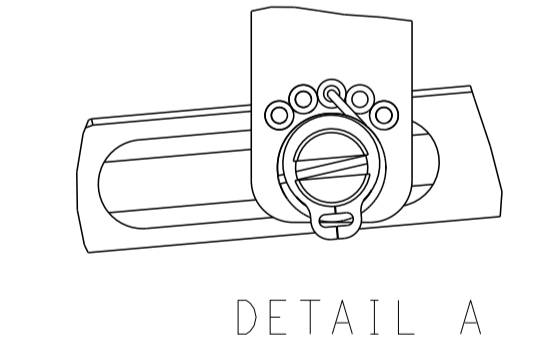


RAM AND HOLDDOWN SET-UP

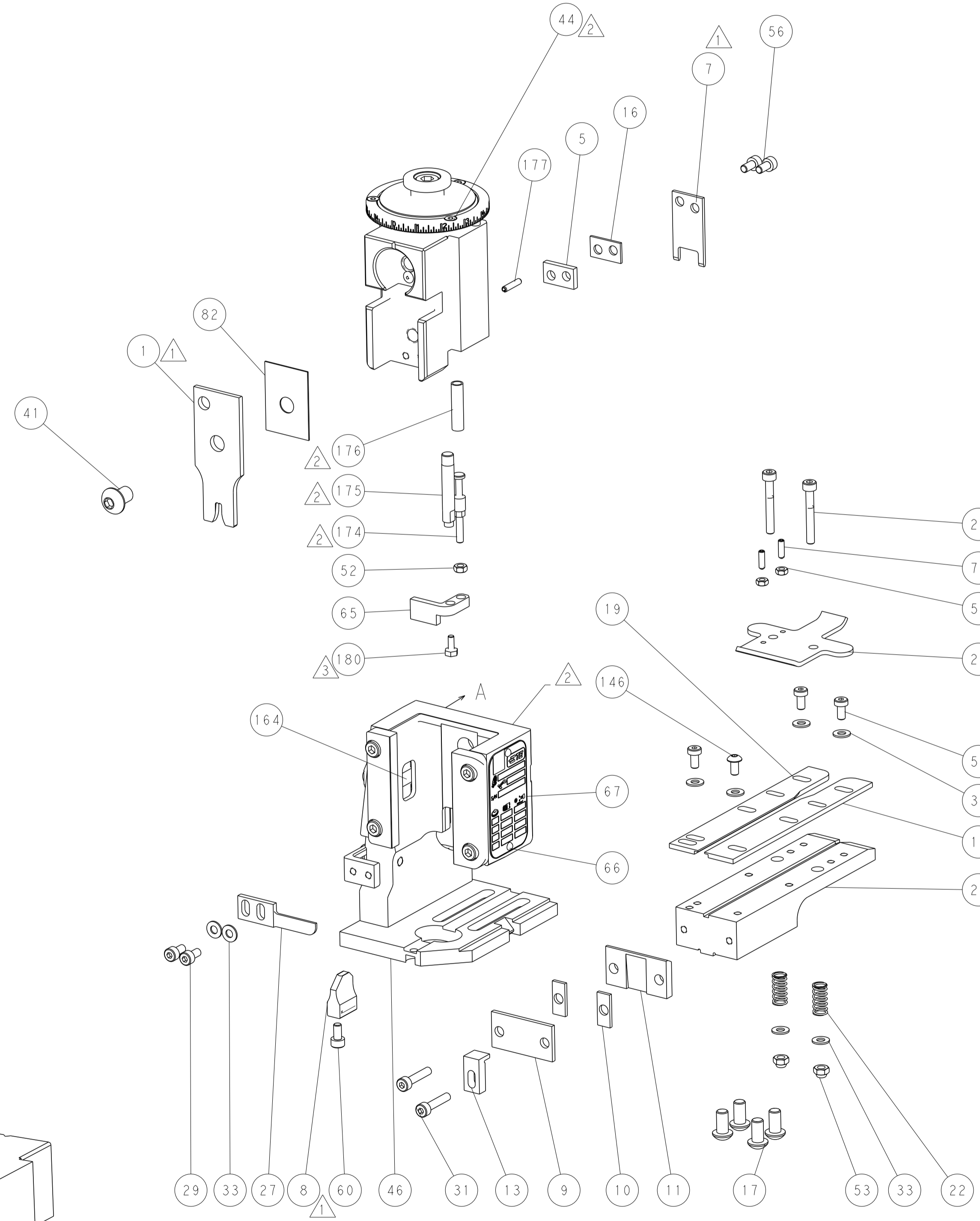
FEED TYPE  
MECHANICAL



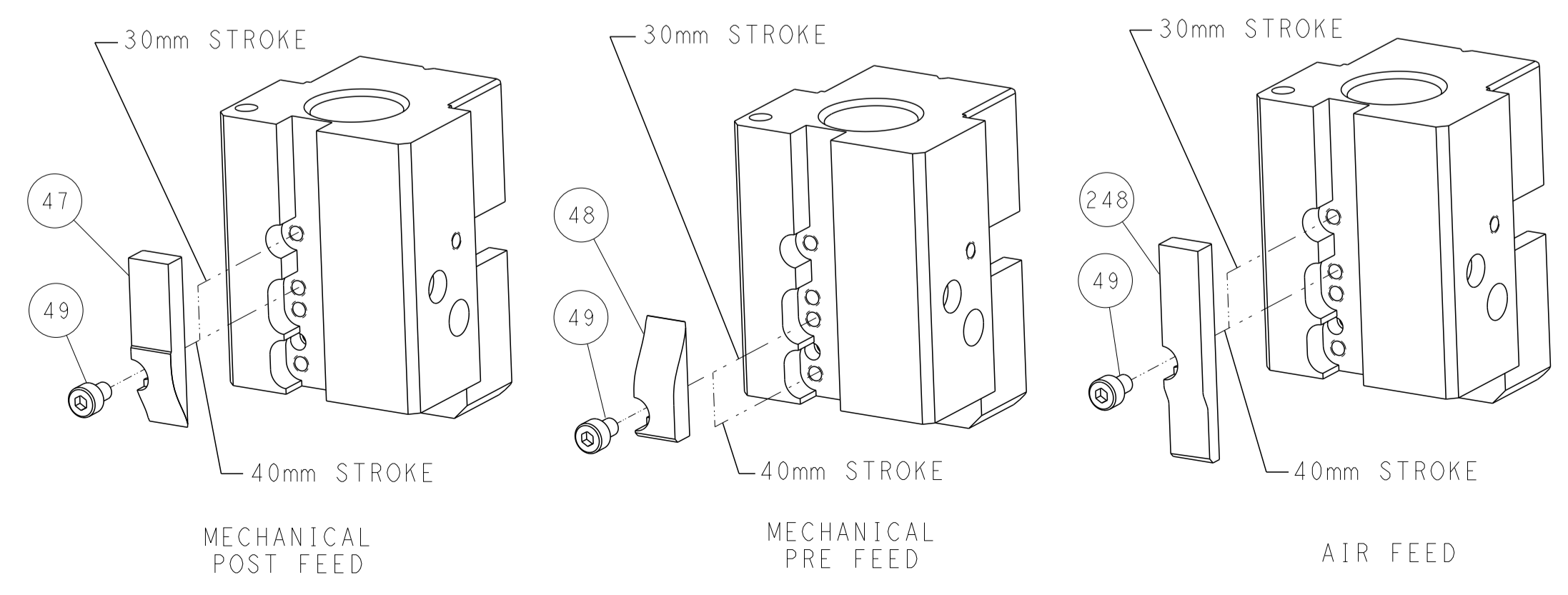
FEED SPRING  
SETTING POSITION



DETAIL A



CAM POSITIONS



**ATLANTIC VERSION**  
 Shown on sheets 1 of 4 & 2 of 4  
 (Pacific version shown on sheets 3 of 4 & 4 of 4)

|                    |  |   |  |  |  |  |  |
|--------------------|--|---|--|--|--|--|--|
| DIMENSIONS: mm<br> |  | TOLERANCES UNLESS OTHERWISE SPECIFIED:<br>0 PLC ±<br>1 PLC ±<br>2 PLC ±<br>3 PLC ±<br>4 PLC ±<br>ANGLES ±<br>FINISH |  | DWN M. RILEY 27OCT2016<br>CHK C. TOPPER 27OCT2016<br>APVD J. DEGRANGE 27OCT2016<br>PRODUCT SPEC<br>APPLICATION SPEC<br>WEIGHT<br>SCALE 1:1 |  | NAME Ocean End Feed Applicator<br>SIZE CAGE CODE DRAWING NO<br>A1 00779 ©=2150755<br>RESTRICTED TO |  |
| MATERIAL:          |  |   |  | CUSTOMER ACCESSIBLE PRODUCTION DRAWING   |  | SHEET 2 OF 4 REV C   |  |

| PART NUMBER | REVISION | DESCRIPTION              | FEED TYPE  |
|-------------|----------|--------------------------|------------|
| 2-2150755-1 | C        | FINE CRIMP HEIGHT ADJUST | MECHANICAL |
| 2-2150755-2 | C        | FINE CRIMP HEIGHT ADJUST | PNEUMATIC  |
| 7-2150755-7 | A        | CRIMP TOOLING KIT        | -          |

PACIFIC VERSION TERMINATOR  
INTERFACE ADAPTER



| APPLICATOR DATA                |                |      |
|--------------------------------|----------------|------|
| CRIMP                          | SIZE           | TYPE |
| WIRE                           | 3.56 mm [.140] | F    |
| INSUL                          | -              | -    |
| APPL INSTRUCTIONS<br>408-35043 |                |      |

| TERMINAL DATA: TE TERMINAL                       |                      | TE CRIMP SPECIFICATION                                    |
|--|----------------------|---|
| TERMINAL NAME: TERMINAL, SPADE                   |                      |   |
| WIRE STRIP LENGTH<br>5.34-6.10 mm [.210-.240 IN] |                      | INSULATION DIAMETER RANGE<br>Ø1.97-2.62 mm [.078-.103 IN] |
| TERMINAL APPLICATION SPECIFICATION<br>114-2084   |                      |   |
| TERMINALS APPLIED                                |                      |   |
| TE TERMINAL<br>41473                             | TE TERMINAL<br>40577 | TE TERMINAL<br>40705                                      |

| WIRE SIZE | CRIMP HEIGHT mm [INCH]        | CRIMP HEIGHT REFERENCE SETTING |
|-----------|-------------------------------|--------------------------------|
| 14 AWG    | 2.26 +/- 0.05 [.089 +/- .002] | 6.8                            |
| 16 AWG    | 2.08 +/- 0.05 [.082 +/- .002] | 9.0                            |
| 18 AWG    | 1.98 +/- 0.05 [.078 +/- .002] | 10.2                           |



- 1 RECOMMENDED SPARE PARTS
- 2 REFER TO SUPPLIED INSTRUCTION SHEET FOR CLEANING, LUBRICATION AND STORAGE OF APPLICATOR.
- 3 APPLY PART NUMBER 1-23419-5 LOCTITE TO THREADS OF ITEMS 180.
- 4 CRIMP HEIGHT REFERENCE SETTING WAS THE SETTING USED WHEN THE APPLICATOR WAS QUALIFIED AT THE FACTORY. ADJUSTMENT MAY BE NECESSARY WHEN RUNNING APPLICATOR IN THE FIELD.
- 5. UNLESS SPECIFIED OTHERWISE TORQUE VALUES SHALL BE USED PER DOCUMENT, 101-35000.

**\*WARNING**  
ON INSTALLATION, SET WIRE DISC TO CRIMP HEIGHT REFERENCE SETTING FOR LARGEST WIRE SIZE. CRIMP HEIGHT REFERENCE SETTINGS GREATER THAN THE VALUE SHOWN MAY CAUSE DAMAGE TO THE CRIMP TOOLING, REFER TO THE INSTRUCTION SHEET FOR PROPER SETUP AND ADJUSTMENTS.

PACIFIC VERSION  
Shown on sheets 3 of 4 & 4 of 4  
(Atlantic version shown on sheets 1 of 4 & 2 of 4)

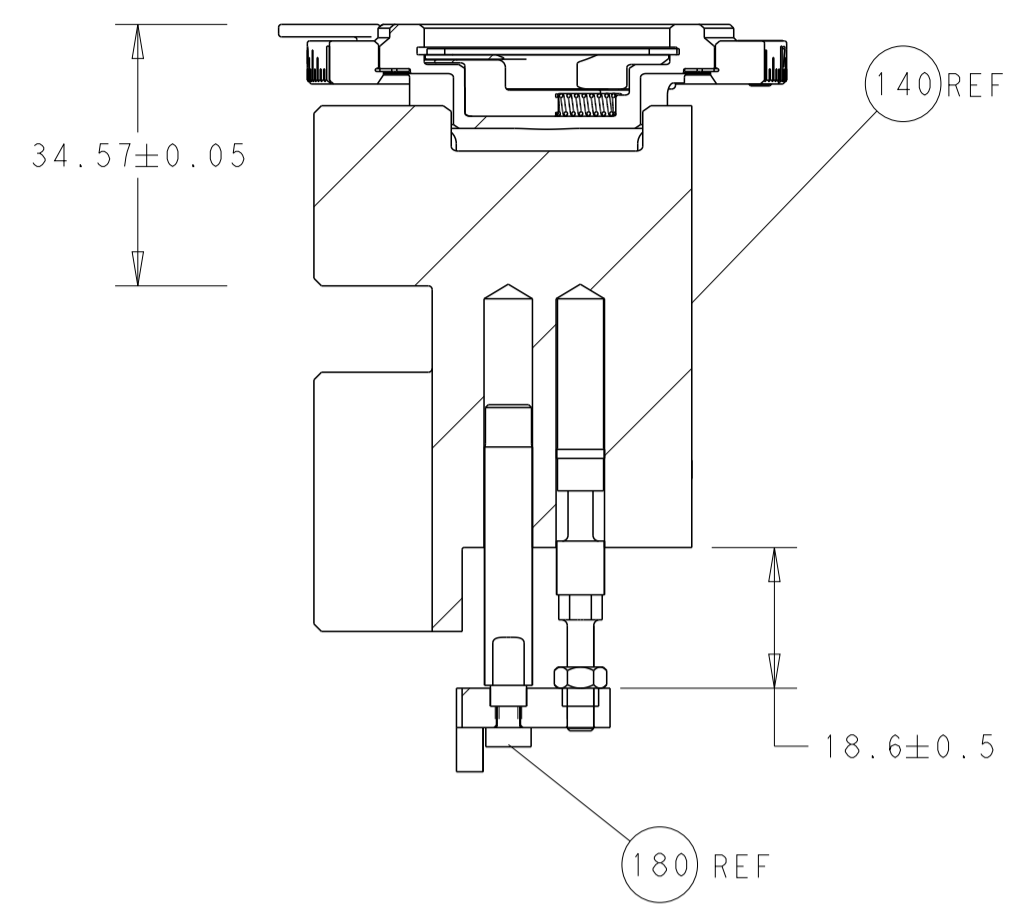
| LOC | DIST | REVISIONS |     |             |      |     |      |
|-----|------|-----------|-----|-------------|------|-----|------|
|     |      | P         | LTN | DESCRIPTION | DATE | OWN | APVD |
| A   | 66   | -         | -   | SEE SHEET 1 | -    | -   | -    |

|   |     |     |             |                                       |             |         |
|---|-----|-----|-------------|---------------------------------------|-------------|---------|
| - | -   | 1   | 2119580-1   | MECHANICAL FEED ASSEMBLY              | 239         |         |
| - | 1   | -   | 2844940-4   | AIR FEED MODULE                       | 238         |         |
| - | 4   | 4   | 2079383-9   | SCR, BHSC, RoHS (M6 X 20)             | 186         |         |
| - | 1   | 1   | 3-1752354-6 | STANDOFF, HOLD-DOWN                   | 180         |         |
| - | 1   | 1   | 6-993111-6  | PIN, SLOTTED SPRING 3.0 X 14.0        | 177         |         |
| - | 1   | 1   | 8-22280-7   | SPRING, COMPRESSION                   | 176         |         |
| - | 1   | 1   | 1752353-2   | GUIDE PIN, HOLDDOWN                   | 175         |         |
| - | 1   | 1   | 1901680-2   | GUIDE PIN, HOLDDOWN                   | 174         |         |
| - | REF | REF | 994970-2    | COUNTER, MAGNETIC                     | 164         |         |
| - | 1   | -   | 2119641-2   | FEED CAM, AIR FEED                    | 152         |         |
| - | 1   | 1   | 2079383-4   | SCR, BHSC, RoHS (M4 X 8)              | 146         |         |
| - | 1   | 1   | 2168083-8   | SCR, SKT HD CAP, RoHS, M4 X 16        | 144         |         |
| - | -   | 1   | 2119653-2   | FEED CAM, POST FEED                   | 142         |         |
| - | 1   | 1   | 2119655-6   | APPLICATOR BASIC ASSEMBLY, EF         | 141         |         |
| - | 1   | 1   | 1803518-1   | RAM ASSEMBLY, EF PACIFIC              | 140         |         |
| - | 1   | 1   | 455888-5    | SPACER, CRIMPER                       | 82          |         |
| - | 1   | 1   | 1803607-4   | DOCUMENTATION PACKAGE                 | 71          |         |
| - | 2   | 2   | 2-18032-2   | SCR, SET, FLT PNT, M3 X 10.0          | 70          |         |
| - | 1   | 1   | 2119740-1   | TAG, IDENTIFICATION                   | 67          |         |
| - | 2   | 2   | 2168078-1   | SCREW, DRIVE, RH, RoHS, 2 x .188      | 66          |         |
| - | 1   | 1   | 1901681-5   | HOLDDOWN, TERMINAL                    | 65          |         |
| - | 1   | 1   | 5-18022-5   | SCR, HEX HD CAP, M4 X 6.0             | 59          |         |
| - | -   | 1   | 2063961-1   | FEED FINGER                           | 58          |         |
| - | 3   | 3   | 2168400-4   | SHCS, LOW HEAD, RoHS, M4 X 8          | 57          |         |
| - | 2   | 2   | 2168083-2   | SCR, SKT HD CAP, RoHS, M4 X 8.0       | 56          |         |
| - | 2   | 2   | 5018030-1   | NUT, HEX, REG, RoHS, M3               | 54          |         |
| - | 2   | 2   | 986965-8    | NUT, LOCK, HEX, TORQUE (M4)           | 53          |         |
| - | 1   | 1   | 1-5018030-0 | NUT, HEX, REG, RoHS, M3.5             | 52          |         |
| - | 1   | -   | 2063961-1   | FEED FINGER                           | 51          |         |
| - | 1   | 2   | 18023-9     | SCR, SKT HD CAP M4 X 6.0              | 49          |         |
| - | -   | 1   | 2119652-1   | FEED CAM, PRE FEED                    | 48          |         |
| - | 1   | 1   | 1803602-3   | SCR, BHSC, RoHS (M8 X 12)             | 41          |         |
| - | 8   | 8   | 1-18028-2   | WASHER, FLAT, REG M4                  | 33          |         |
| - | 2   | 2   | 2168083-9   | SCR, SKT HD CAP, RoHS, M4 X 20        | 31          |         |
| - | 2   | 2   | 2168083-2   | SCR, SKT HD CAP, RoHS, M4 X 8.0       | 29          |         |
| - | 1   | 1   | 240639-4    | STRIPPER (MACHINING)                  | 27          |         |
| - | 2   | 2   | 1-2168083-5 | SCR, SKT HD CAP, RoHS, M4 X 30        | 25          |         |
| - | 1   | 1   | 1752371-3   | PLATE, STRIP GUIDE                    | 24          |         |
| - | 2   | 2   | 2-22281-3   | SPRING, COMPRESSION                   | 22          |         |
| - | 1   | 1   | 1803292-4   | DRAG                                  | 20          |         |
| - | 1   | 1   | 1-1901696-8 | STRIP GUIDE, REAR                     | 19          |         |
| - | 1   | 1   | 1-1901695-8 | STRIP GUIDE, FRONT                    | 18          |         |
| - | 1   | 1   | 3-240641-9  | SPACER                                | 16          |         |
| - | 1   | 1   | 1752360-1   | SPACER, HOLD-DOWN                     | 13          |         |
| - | 1   | 1   | 240833-2    | PLATE, REAR SHEAR                     | 11          |         |
| - | 2   | 2   | 240645-7    | SPACER, SHEAR PLATE                   | 10          |         |
| - | 1   | 1   | 1-240642-0  | PLATE, FRONT SHEAR                    | 9           |         |
| - | 1   | 1   | 1-1333224-7 | ANVIL, COMBINATION (E.F. WIRE/B ONLY) | 8           |         |
| - | 1   | 1   | 1-240651-5  | BLADE, SLUG                           | 7           |         |
| - | -   | -   | -           | -                                     | 6           |         |
| - | 1   | 1   | 240641-5    | SPACER                                | 5           |         |
| - | -   | -   | -           | -                                     | 4           |         |
| - | -   | -   | -           | -                                     | 3           |         |
| - | -   | -   | -           | -                                     | 2           |         |
| - | 1   | 1   | 1-456411-4  | CRIMPER, WIRE PREMIUM                 | 1           |         |
| - | 77  | 22  | 21          | PART NO                               | DESCRIPTION | ITEM NO |

| DIMENSIONS: |         | TOLERANCES UNLESS OTHERWISE SPECIFIED: |         | MATERIAL: |         |
|-------------|---------|--|---------|-----------|---------|
| mm          | 0 PLC ± | 1 PLC ±                                | 2 PLC ± | 3 PLC ±   | 4 PLC ± |
|             | ANGLES  | FINISH                                 |         |           |         |

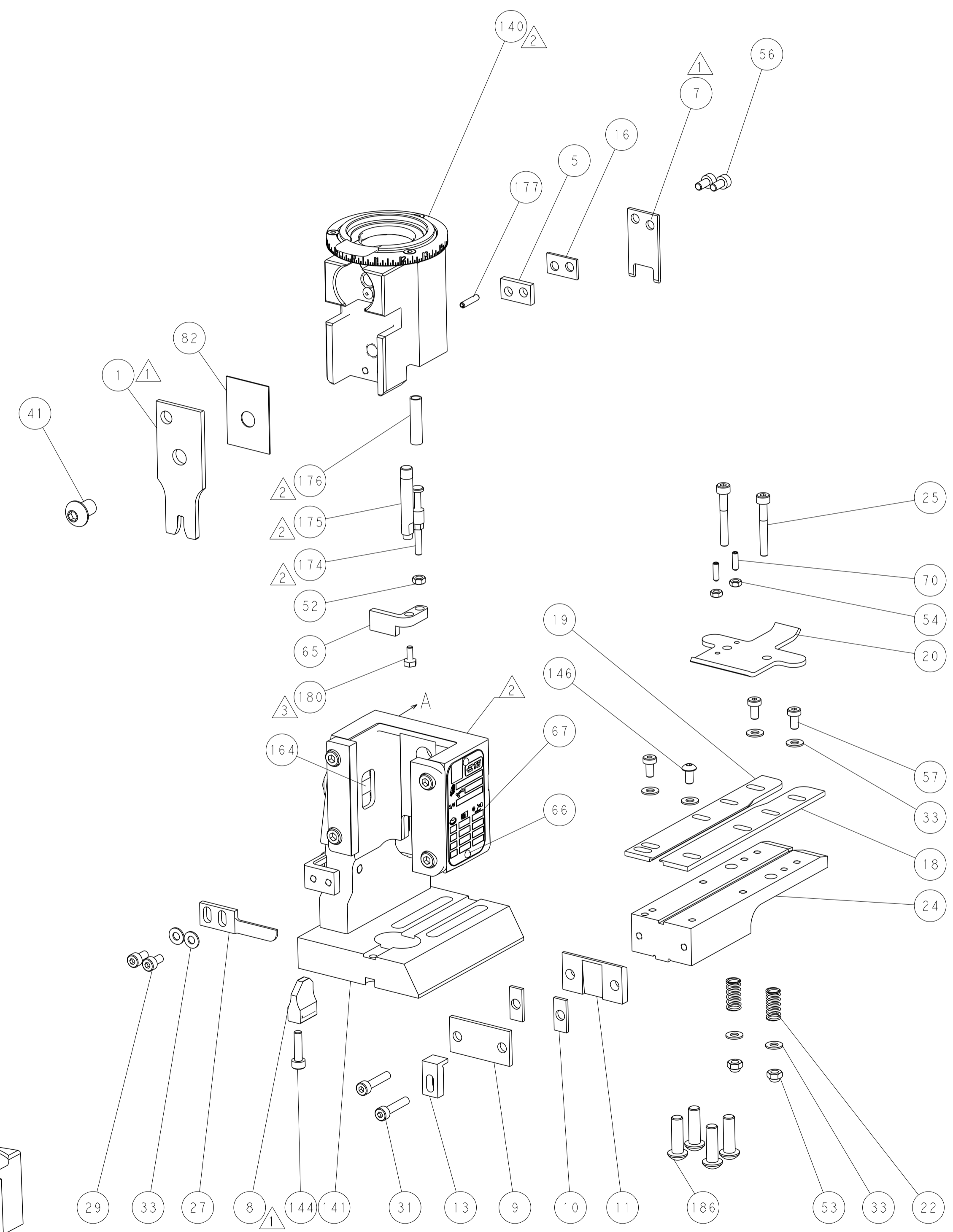
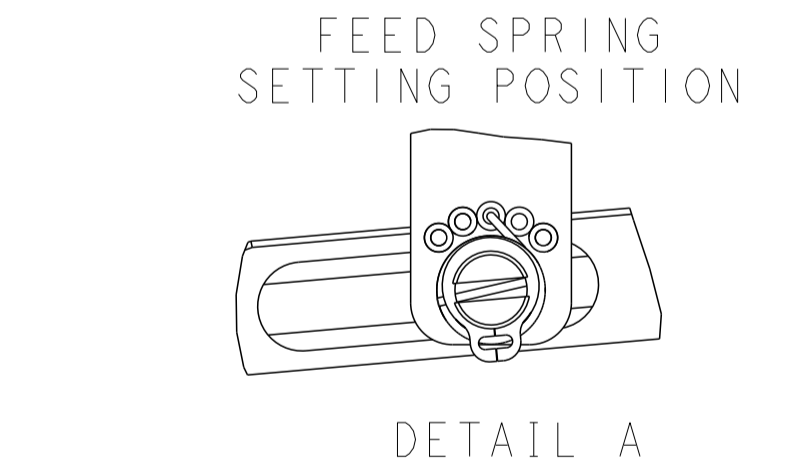
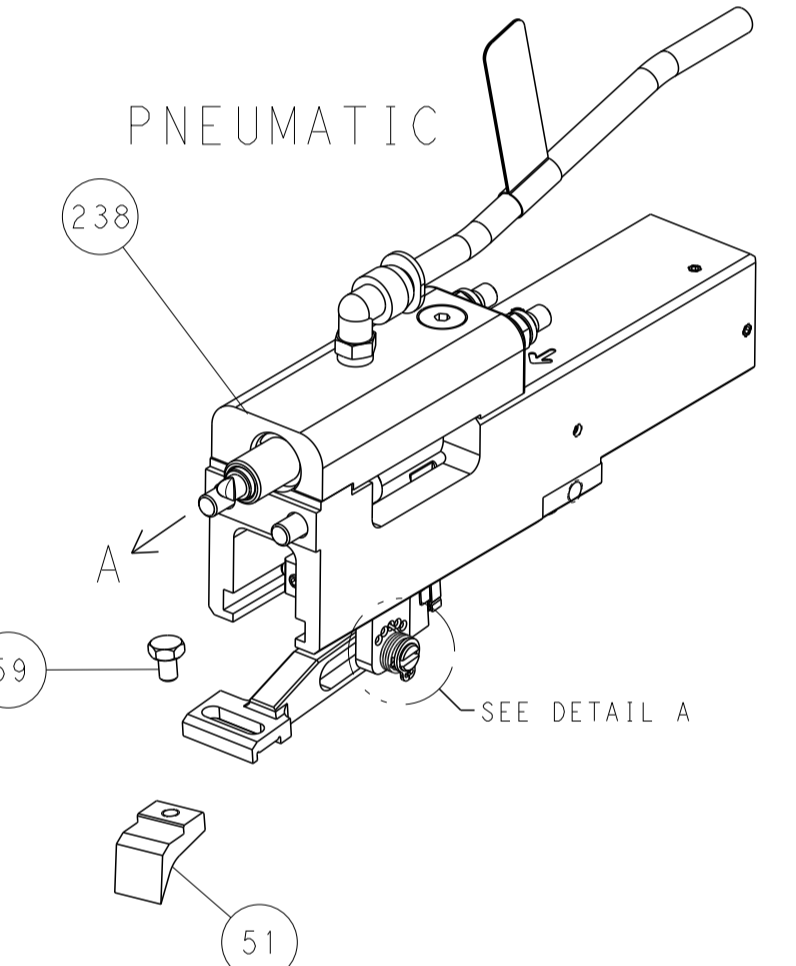
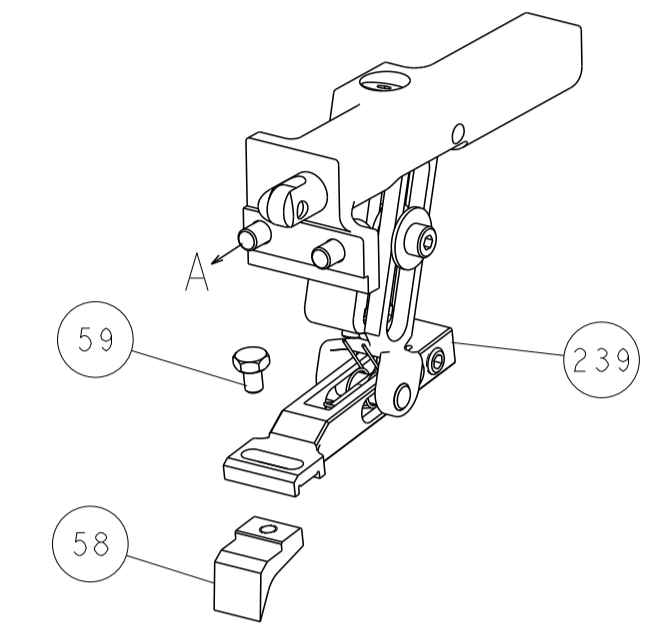
|               |             |           |                  |                           |         |
|---------------|-------------|-----------|------------------|---------------------------|---------|
| CHK           | M. RILEY    | 27OCT2016 | NAME             | TE Connectivity           |         |
| CHK           | C. TOPPER   | 27OCT2016 | PRODUCT SPEC     | Harrisburg, PA 17105-3608 |         |
| APVD          | J. DEGRANGE | 27OCT2016 | APPLICATION SPEC |                           |         |
| SIZE          | A1          | CAGE CODE | 00779            | DRAWING NO                | 2150755 |
| SCALE         | 1:1         | SHEET     | 3                | OF                        | 4       |
| RESTRICTED TO |             | REV       | C                |                           |         |

| LOC |    | DIST |     | REVISIONS   |      |     |      |
|-----|----|------|-----|-------------|------|-----|------|
| A   | 66 | P    | LTM | DESCRIPTION | DATE | OWN | APVD |
|     |    | -    |     | SEE SHEET 1 |      |     |      |

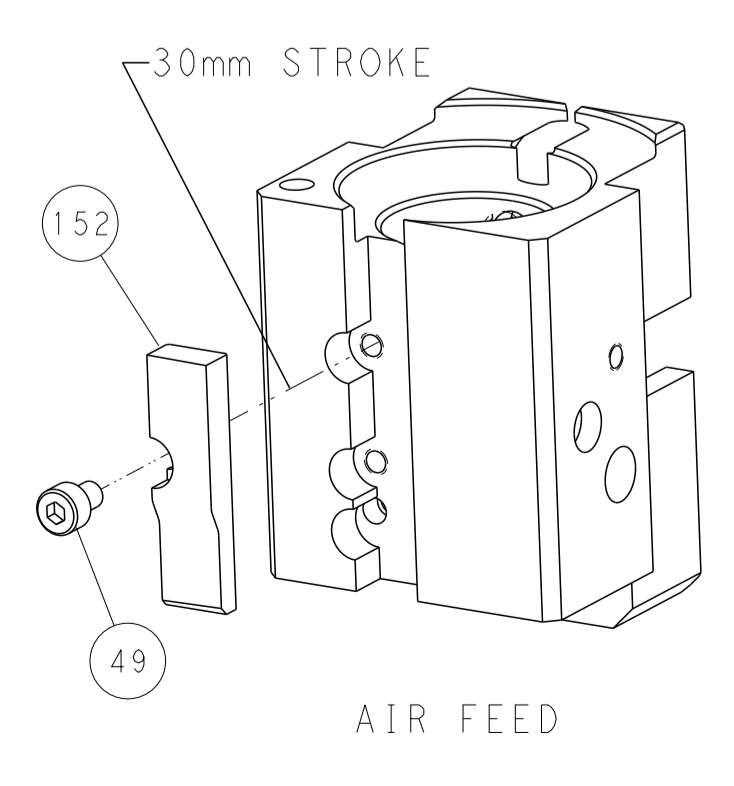
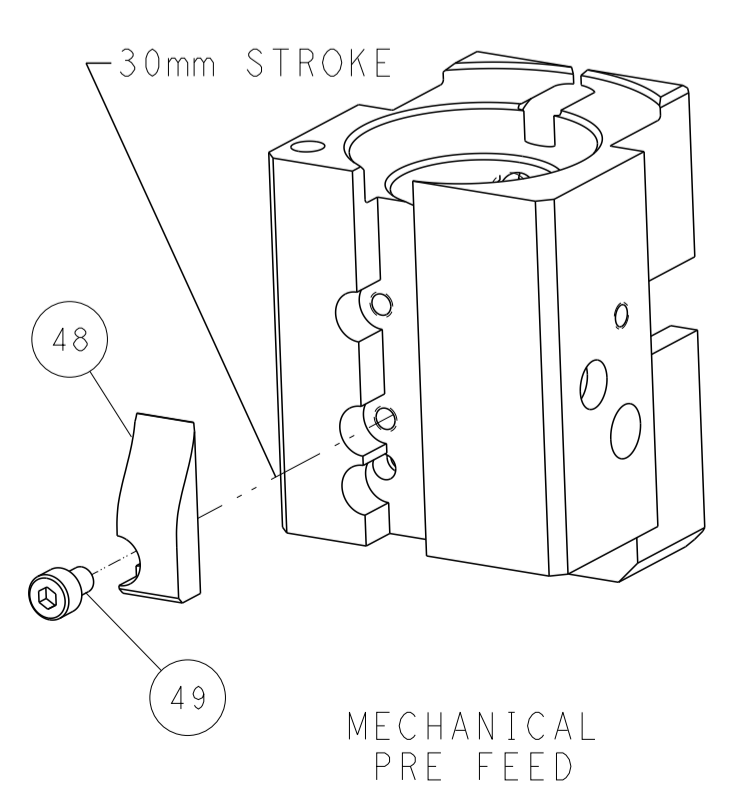
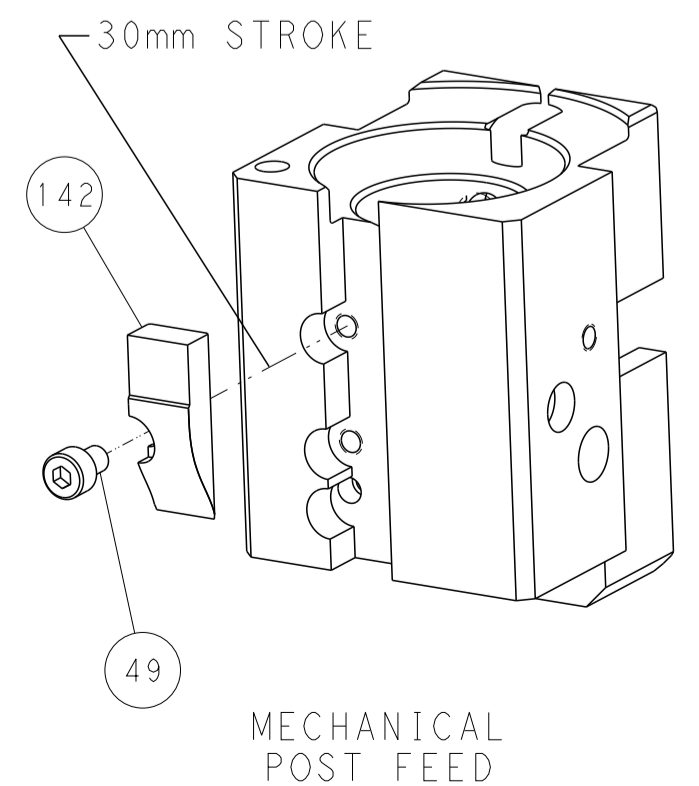


RAM AND HOLDDOWN SET-UP

FEED TYPE  
MECHANICAL



CAM POSITIONS



PACIFIC VERSION  
 Shown on sheets 3 of 4 & 4 of 4  
 (Atlantic version shown on sheets 1 of 4 & 2 of 4)

|             |  |  |  |  |  |             |  |           |  |                           |  |                           |  |
|-------------|--|--|--|--|--|-------------|--|-----------|--|---------------------------|--|---------------------------|--|
| DIMENSIONS: |  | TOLERANCES UNLESS OTHERWISE SPECIFIED: |  | OWN                                    |  | M. RILEY    |  | 27OCT2016 |  | STE                       |  | TE Connectivity           |  |
| mm          |  | 0 PLC ±                                |  | CHK                                    |  | C. TOPPER   |  | 27OCT2016 |  | Harrisburg, PA 17105-3608 |  |                           |  |
| MATERIAL:   |  | FINISH:                                |  | APVD                                   |  | J. DEGRANGE |  | 27OCT2016 |  | NAME                      |  | Ocean End Feed Applicator |  |
|             |  |  |  | WEIGHT                                 |  | A           |  | 00779     |  | SCALE                     |  | 1:1                       |  |
|             |  |  |  | Customer Accessible Production Drawing |  | SHEET       |  | 4         |  | OF                        |  | 4                         |  |
|             |  |  |  |  |  |             |  |           |  |                           |  | REV C                     |  |