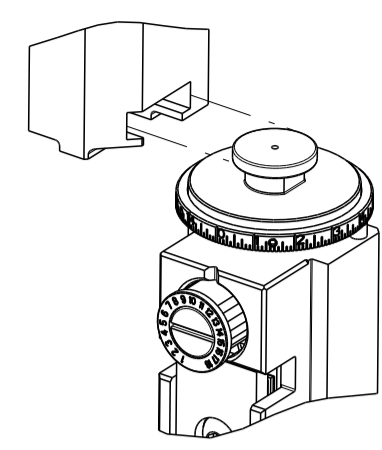


PART NUMBER	REVISION	DESCRIPTION	FEED TYPE
2150860-1	B	FINE CRIMP HEIGHT ADJUST	MECHANICAL
2150860-2	B	FINE CRIMP HEIGHT ADJUST	PNEUMATIC
7-2150860-7	A	CRIMP TOOLING KIT	-

ATLANTIC VERSION TERMINATOR
 INTERFACE ADAPTER



APPLICATOR DATA		
CRIMP	SIZE	TYPE
WIRE	5.33 mm [.210]	F
APPL INSTRUCTIONS 408-35043		

TERMINAL DATA: TE TERMINAL		TE CRIMP SPECIFICATION	
TERMINAL NAME: RING #10 STUD SIZE TERMINAL			
WIRE STRIP LENGTH		INSULATION DIAMETER RANGE	
5.43-5.69 mm [.214-.224 IN]		∅3.96-5.28 mm [1.56-.208 IN]	
TERMINAL APPLICATION SPECIFICATION	114-2084		
TERMINALS APPLIED			
TE TERMINAL	TE TERMINAL	TE TERMINAL	TE TERMINAL
42673-2			

WIRE SIZE	CRIMP HEIGHT mm [INCH]	CRIMP HEIGHT REFERENCE SETTING
8 AWG	4.29 +/- 0.05 [1.69 +/- .002]	4.3
10 AWG	3.84 +/- 0.05 [1.51 +/- .002]	8.7

- 1. RECOMMENDED SPARE PARTS
- 2. REFER TO SUPPLIED INSTRUCTION SHEET FOR CLEANING, LUBRICATION AND STORAGE OF APPLICATOR.
- 3. APPLY PART NUMBER 1-23419-5 LOCTITE TO THREADS OF ITEM 180.
- 4. CRIMP HEIGHT REFERENCE SETTING WAS THE SETTING USED WHEN THE APPLICATOR WAS QUALIFIED AT THE FACTORY. ADJUSTMENT MAY BE NECESSARY WHEN RUNNING APPLICATOR IN THE FIELD.
- 5. UNLESS SPECIFIED OTHERWISE TORQUE VALUES SHALL BE USED PER DOCUMENT, 101-35000.

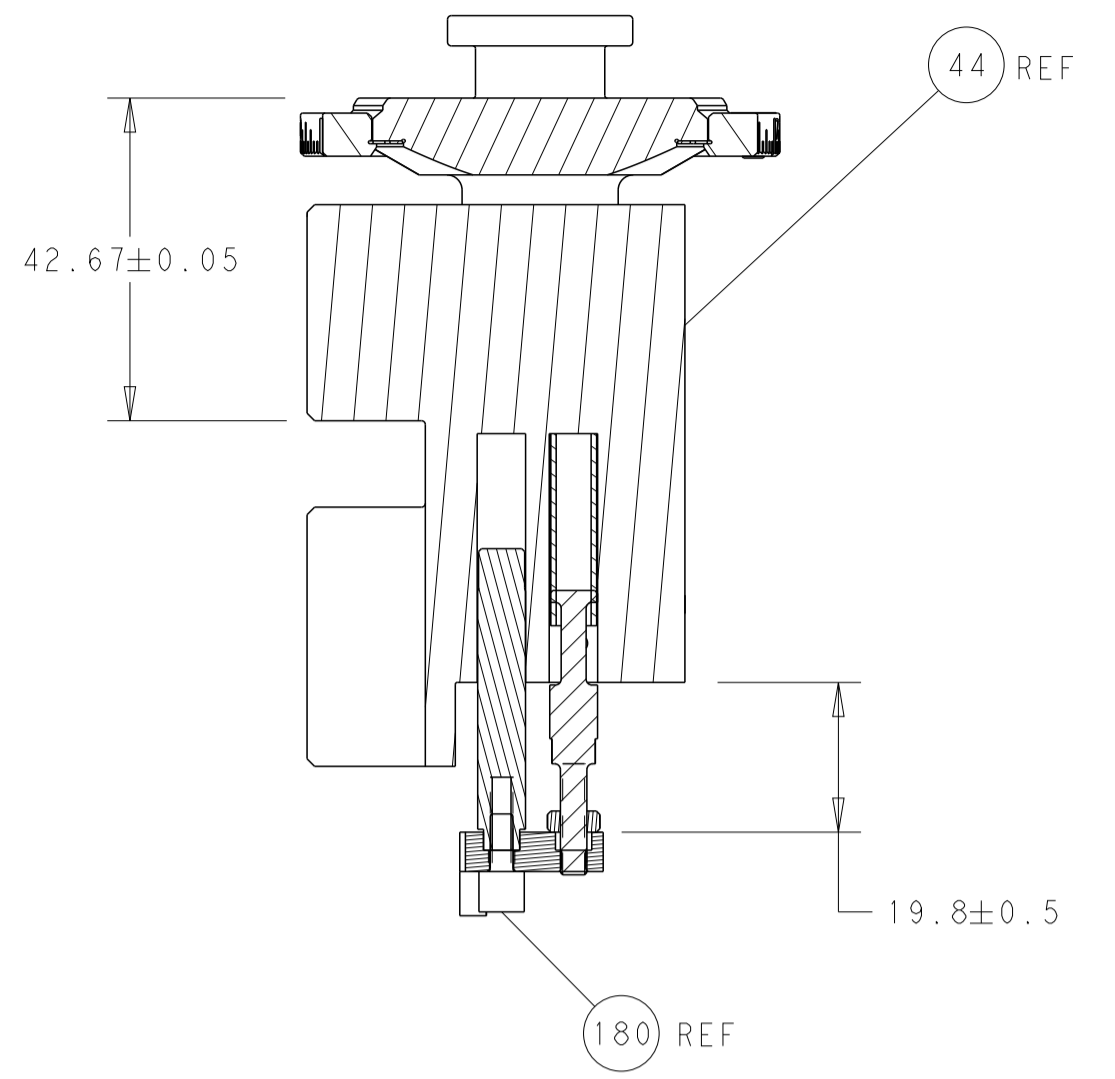
***WARNING**
 ON INSTALLATION, SET WIRE DISC TO CRIMP HEIGHT REFERENCE SETTING FOR LARGEST WIRE SIZE. CRIMP HEIGHT REFERENCE SETTINGS GREATER THAN THE VALUE SHOWN MAY CAUSE DAMAGE TO THE CRIMP TOOLING. REFER TO THE INSTRUCTION SHEET FOR PROPER SETUP AND ADJUSTMENTS.

LOC	DIST	REVISIONS					
A	66	P	LTN	DESCRIPTION	DATE	DWN	APVD
		A		RELEASED	13DEC2017	RK	GB
		B		ECR-24-205123	08APR2024	TB	RR

-	1	-	2119641-1	FEED CAM, AIR FEED	248		
-	-	1	2119580-1	MECHANICAL FEED ASSEMBLY	239		
-	1	-	2844940-3	AIR FEED MODULE	238		
-	1	1	1752354-6	STANDOFF, HOLD-DOWN	180		
-	1	1	6-993111-6	PIN, SLOTTED SPRING 3.0 X 14.0	177		
-	1	1	8-22280-7	SPRING, COMPRESSION	176		
-	1	1	1752353-2	GUIDE PIN, HOLDDOWN	175		
-	1	1	1901680-2	GUIDE PIN, HOLDDOWN	174		
-	REF	REF	994970-2	COUNTER, MAGNETIC	164		
-	1	1	455888-4	SPACER, CRIMPER	82		
-	1	1	1803607-4	DOCUMENTATION PACKAGE	71		
-	2	2	2-18032-2	SCR, SET, FLT PNT, M3 X 10.0	70		
-	1	1	2119740-1	TAG, IDENTIFICATION	67		
-	2	2	2168078-1	SCREW, DRIVE, RH, RoHS, 2 x .188	66		
-	1	1	1901681-1	HOLDDOWN, TERMINAL	65		
-	1	1	2168083-2	SCR, SKT HD CAP, RoHS, M4 X 8.0	60		
-	1	1	5-18022-5	SCR, HEX HD CAP, M4 X 6.0	59		
-	-	1	2063961-1	FEED FINGER	58		
-	4	4	2168400-4	SHCS, LOW HEAD, RoHS, M4 X 8	57		
-	2	2	2168083-8	SCR, SKT HD CAP, RoHS, M4 X 16	56		
-	2	2	5018030-1	NUT, HEX, REG, RoHS, M3	54		
-	2	2	986965-8	NUT, LOCK, HEX, TORQUE (M4)	53		
-	1	1	1-5018030-0	NUT, HEX, REG, RoHS, M3.5	52		
-	1	-	2063961-1	FEED FINGER	51		
-	1	2	18023-9	SCR, SKT HD CAP M4 X 6.0	49		
-	-	1	2119652-1	FEED CAM, PRE FEED	48		
-	-	1	2119653-1	FEED CAM, POST FEED	47		
-	1	1	2119655-5	APPLICATOR BASIC ASSEMBLY, EF	46		
-	1	1	1803517-1	RAM ASSEMBLY, EF ATLANTIC	44		
-	1	1	1803602-1	SCR, BHSC, RoHS (M8 X 25)	41		
-	8	8	1-18028-2	WASHER, FLAT, REG M4	33		
-	2	2	2168083-9	SCR, SKT HD CAP, RoHS, M4 X 20	31		
-	2	2	2168083-2	SCR, SKT HD CAP, RoHS, M4 X 8.0	29		
-	1	1	690455-1	STRIPPER, FRONT CASTING	27		
-	2	2	1-2168083-6	SCR, SKT HD CAP, RoHS, M4 X 35	25		
-	1	1	1752371-5	PLATE, STRIP GUIDE	24		
-	2	2	2-22281-3	SPRING, COMPRESSION	22		
-	1	1	1803292-4	DRAG	20		
-	1	1	2-1901696-1	STRIP GUIDE, REAR	19		
-	1	1	2-1901695-1	STRIP GUIDE, FRONT	18		
-	4	4	1-2079383-1	SCR, BHSC, RoHS (M6 X 12)	17		
-	1	1	5-240641-2	SPACER	16		
-	1	1	1752360-1	SPACER, HOLD-DOWN	13		
-	1	1	240644-1	PLATE, REAR SHEAR	11		
-	2	2	1-240645-2	SPACER, SHEAR PLATE	10		
-	1	1	240642-1	PLATE, FRONT SHEAR	9		
-	1	1	3-1803002-3	ANVIL, COMBINATION, END FEED	8		
-	1	1	2-240651-0	BLADE, SLUG	7		
-	-	-	-	-	6		
-	1	1	2-240641-9	SPACER	5		
-	-	-	-	-	4		
-	-	-	-	-	3		
-	-	-	-	-	2		
-	1	1	1	1-456430-3	CRIMPER, WIRE	1	
-	77	-	2	-1	PART NO	DESCRIPTION	ITEM NO

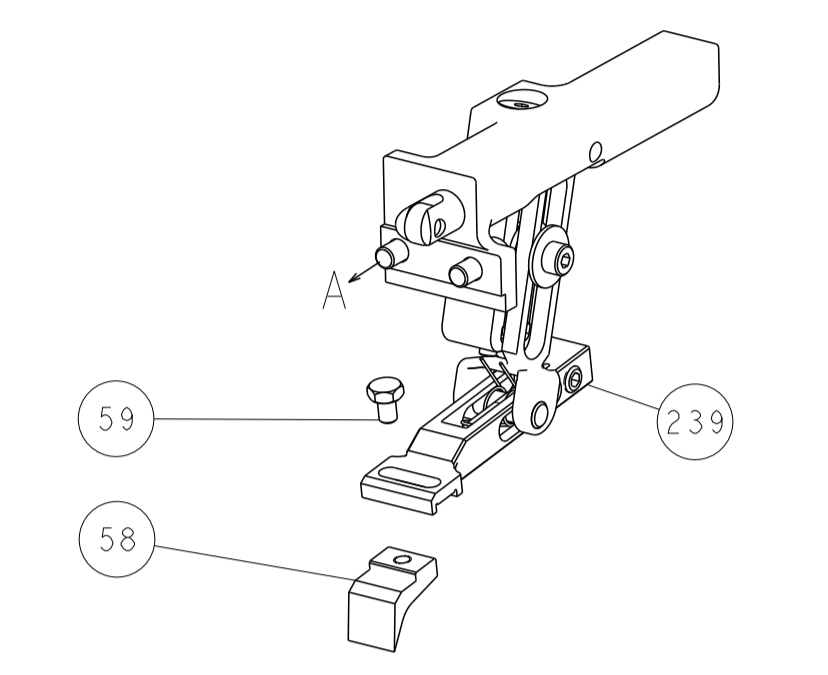
DIMENSIONS:		TOLERANCES UNLESS OTHERWISE SPECIFIED:		DWN E. ZHANG 15NOV2017		TE Connectivity Harrisburg, PA 17105-3608	
mm	0 PLC ± 1 PLC ± 2 PLC ± 3 PLC ± 4 PLC ±	±	±	CHK K. ZHANG 15NOV2017	NAME		
MATERIAL		FINISH		APVD K. ZHANG 15NOV2017		Ocean End Feed Applicator	
Customer Accessible Production Drawing		SCALE 1:1		SHEET 1 OF 4		REV B	

LOC	DIST	REV	DESCRIPTION	DATE	OWN	APVD
A	66		SEE SHEET 1			

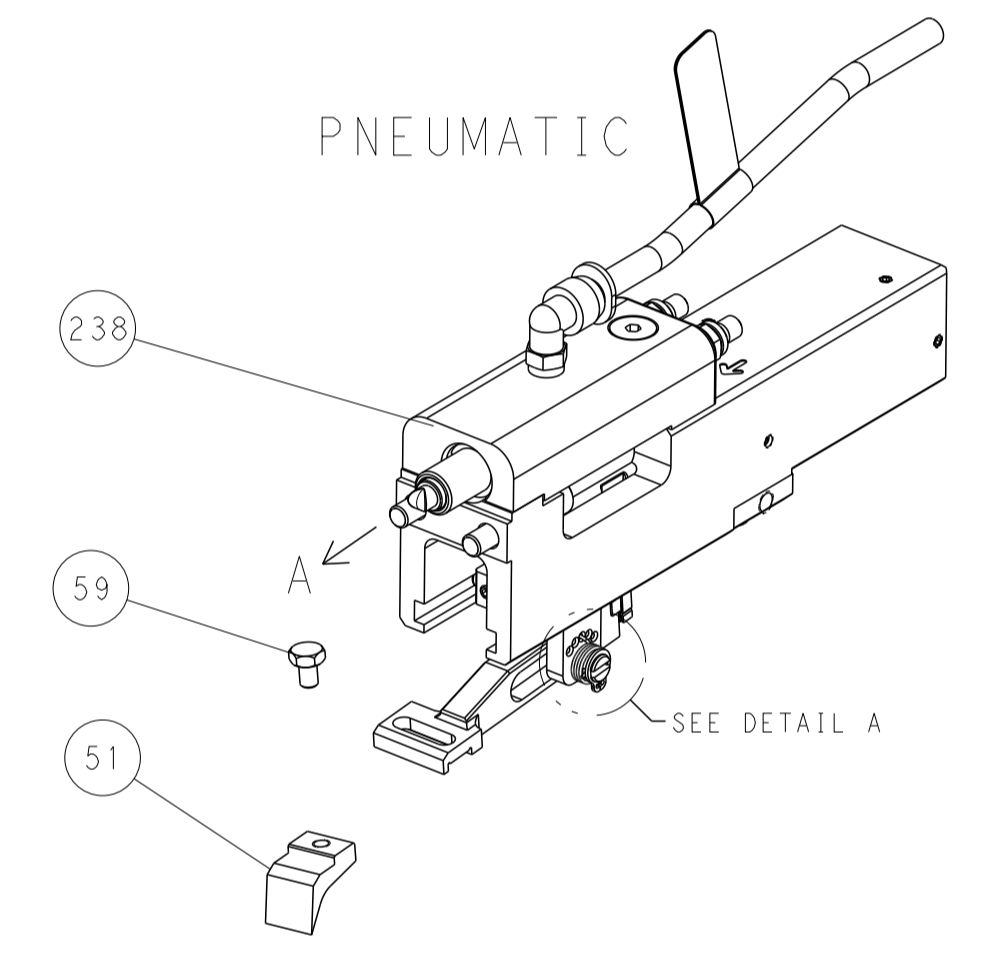


RAM AND HOLDDOWN SET-UP

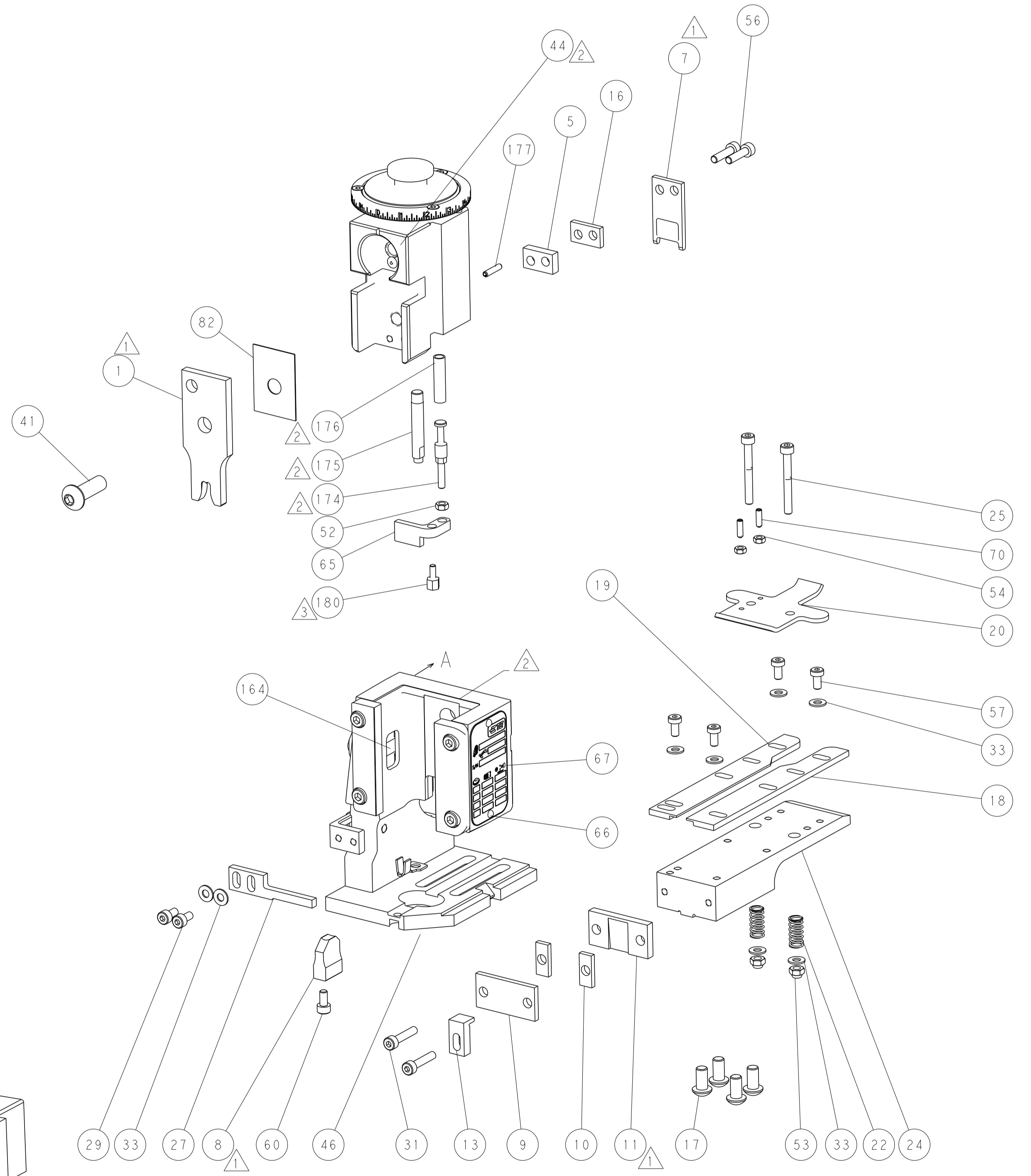
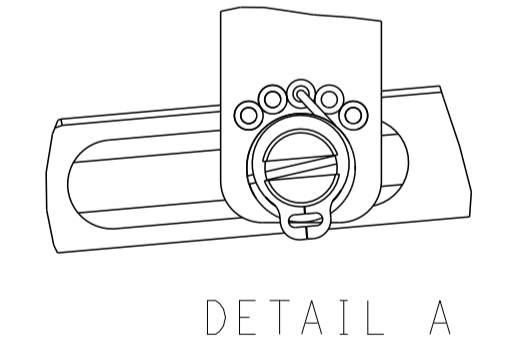
FEED TYPE MECHANICAL



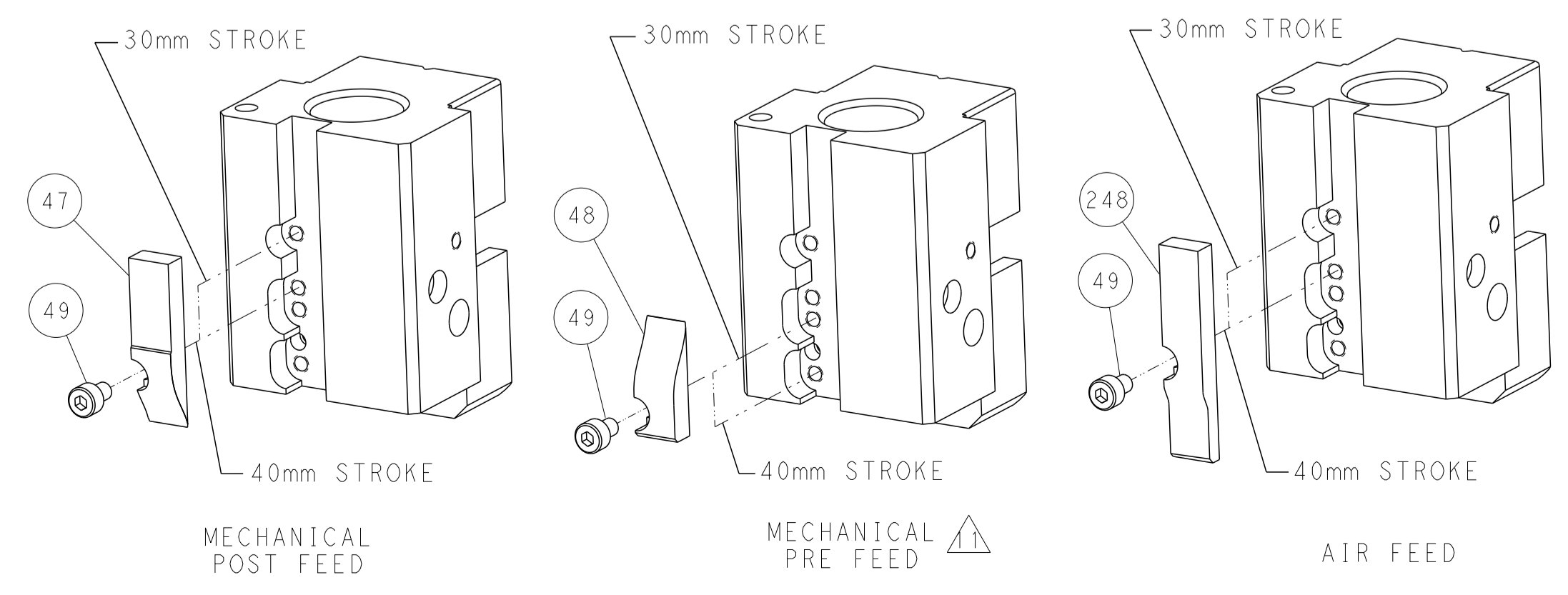
PNEUMATIC



FEED SPRING SETTING POSITION



CAM POSITIONS



DIMENSIONS: mm 		TOLERANCES UNLESS OTHERWISE SPECIFIED: 0 PLC ± 1 PLC ± 2 PLC ± 3 PLC ± 4 PLC ± ANGLES ± FINISH		DWN E. ZHANG 15NOV2017 CHK K. ZHANG 15NOV2017 APVD K. ZHANG 15NOV2017 PRODUCT SPEC APPLICATION SPEC WEIGHT SCALE 1:1		NAME Ocean End Feed Applicator SIZE CAGE CODE DRAWING NO. A1 00779 C=2150860 SHEET 2 OF 4 REV B	
MATERIAL:				RESTRICTED TO:			