

PART NUMBER	REVISION	DESCRIPTION	FEED TYPE
2150896-2	B	FINE CRIMP HEIGHT ADJUST	PNEUMATIC
7-2150896-2	B	PNEUMATIC AND CRIMP TOOLING KIT	PNEUMATIC
7-2150896-7	A	CRIMP TOOLING KIT	-

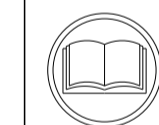
ATLANTIC VERSION TERMINATOR INTERFACE ADAPTER



APPLICATOR DATA		
CRIMP	SIZE	TYPE
WIRE	3.18 mm [.125]	F
INSUL	4.32 mm [.170]	F
APPL INSTRUCTIONS 408-35043		

TERMINAL DATA: ESCUBEDO TERMINAL ESCUBEDO CRIMP SPECIFICATION			
TERMINAL NAME: TERMINAL PARA TORNILLO			
WIRE STRIP LENGTH		INSULATION DIAMETER RANGE	
5.50-6.50 mm [.217-.256 IN]		Ø1.80-4.30 mm [.071-.169 IN]	
TERMINAL APPLICATION SPECIFICATION	3417.XX Rev 1		
TERMINALS APPLIED			
TE TERMINAL	ESCUBEDO TERMINAL	TE TERMINAL	ESCUBEDO TERMINAL
3311124-1	3417.00	3311124-5	3418.00
3311124-2	3417.02	3311124-6	3418.02
3311124-3	3417.30	3311124-7	3418.30
3311124-4	3417.32	3311124-8	3418.32

WIRE SIZE	CRIMP HEIGHT mm [INCH]	CRIMP HEIGHT REFERENCE SETTING
2.50mm2	2.45+/-0.03 [.096+/- .001]	7.0
2.00mm2	2.35+/-0.03 [.093+/- .001]	8.2
1.50mm2	2.25+/-0.03 [.089+/- .001]	9.0
1.00mm2	2.15+/-0.03 [.085+/- .001]	10.1



- 1 RECOMMENDED SPARE PARTS
- 2 REFER TO SUPPLIED INSTRUCTION SHEET FOR CLEANING, LUBRICATION AND STORAGE OF APPLICATOR.
- 3 APPLY PART NUMBER 2-23419-6 LOCTITE TO THREADS OF ITEM 242. APPLY PART NUMBER 1-23419-5 LOCTITE TO THREADS OF ITEM 180.
- 4 CRIMP HEIGHT REFERENCE SETTING WAS THE SETTING USED WHEN THE APPLICATOR WAS QUALIFIED AT THE FACTORY. ADJUSTMENT MAY BE NECESSARY WHEN RUNNING APPLICATOR IN THE FIELD.
- 5 TERMINAL LUBRICANT IS RECOMMENDED.
- 6. UNLESS SPECIFIED OTHERWISE TORQUE VALUES SHALL BE USED PER DOCUMENT, 101-35000.
- 7 TERMINAL PITCH NOT COMPATIBLE WITH MECHANICAL FEED.

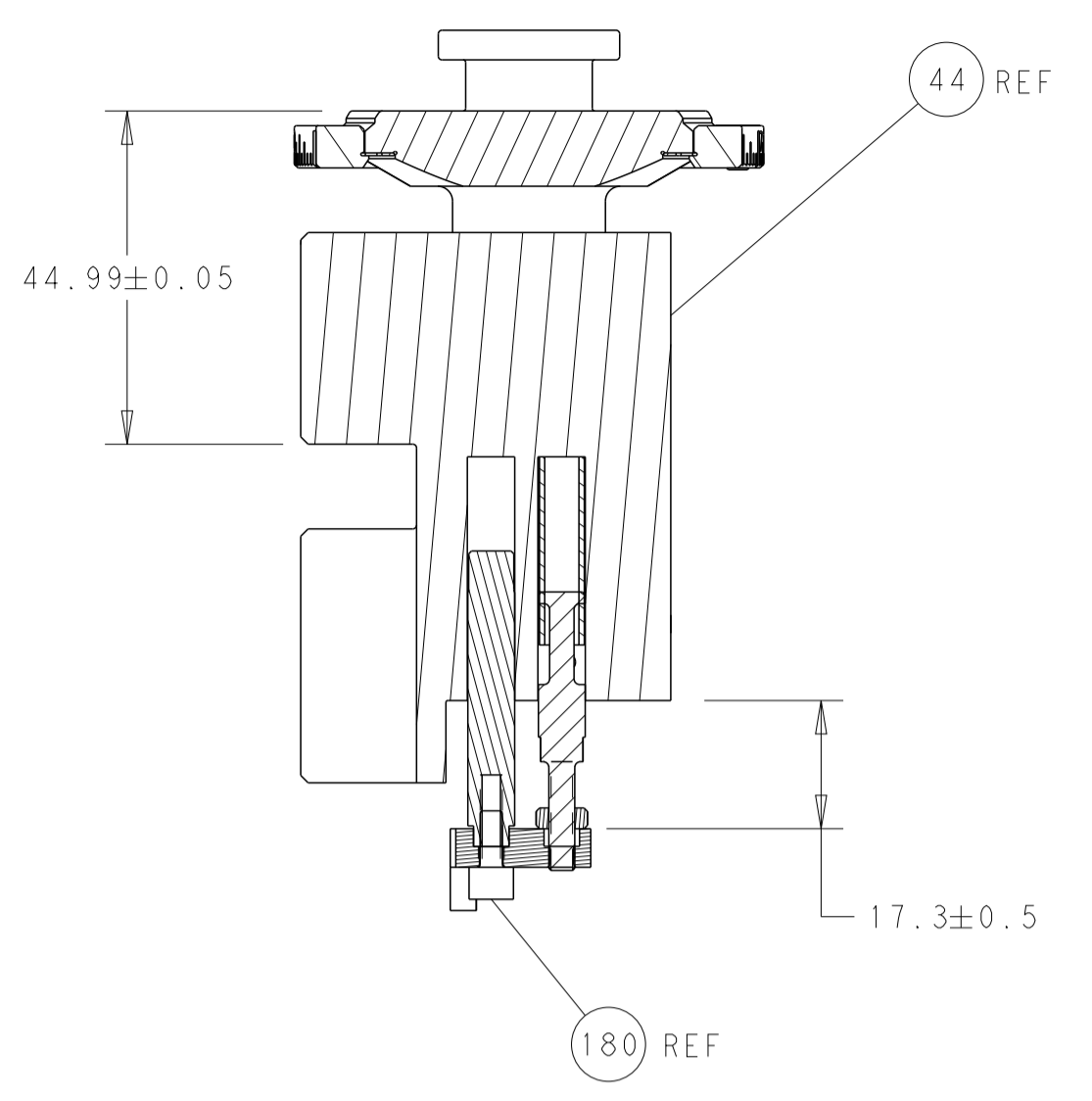
**\*WARNING**  
ON INSTALLATION, SET WIRE DISC TO CRIMP HEIGHT REFERENCE SETTING FOR LARGEST WIRE SIZE. CRIMP HEIGHT REFERENCE SETTINGS GREATER THAN THE VALUE SHOWN MAY CAUSE DAMAGE TO THE CRIMP TOOLING. REFER TO THE INSTRUCTION SHEET FOR PROPER SETUP AND ADJUSTMENTS.

LOC	DIST	REVISIONS					
A	66	P	LTN	DESCRIPTION	DATE	OWN	APVD
		A		RELEASED	16APR2018	AW	TE
		B		ECR-24-197860	18JAN2024	TB	TE

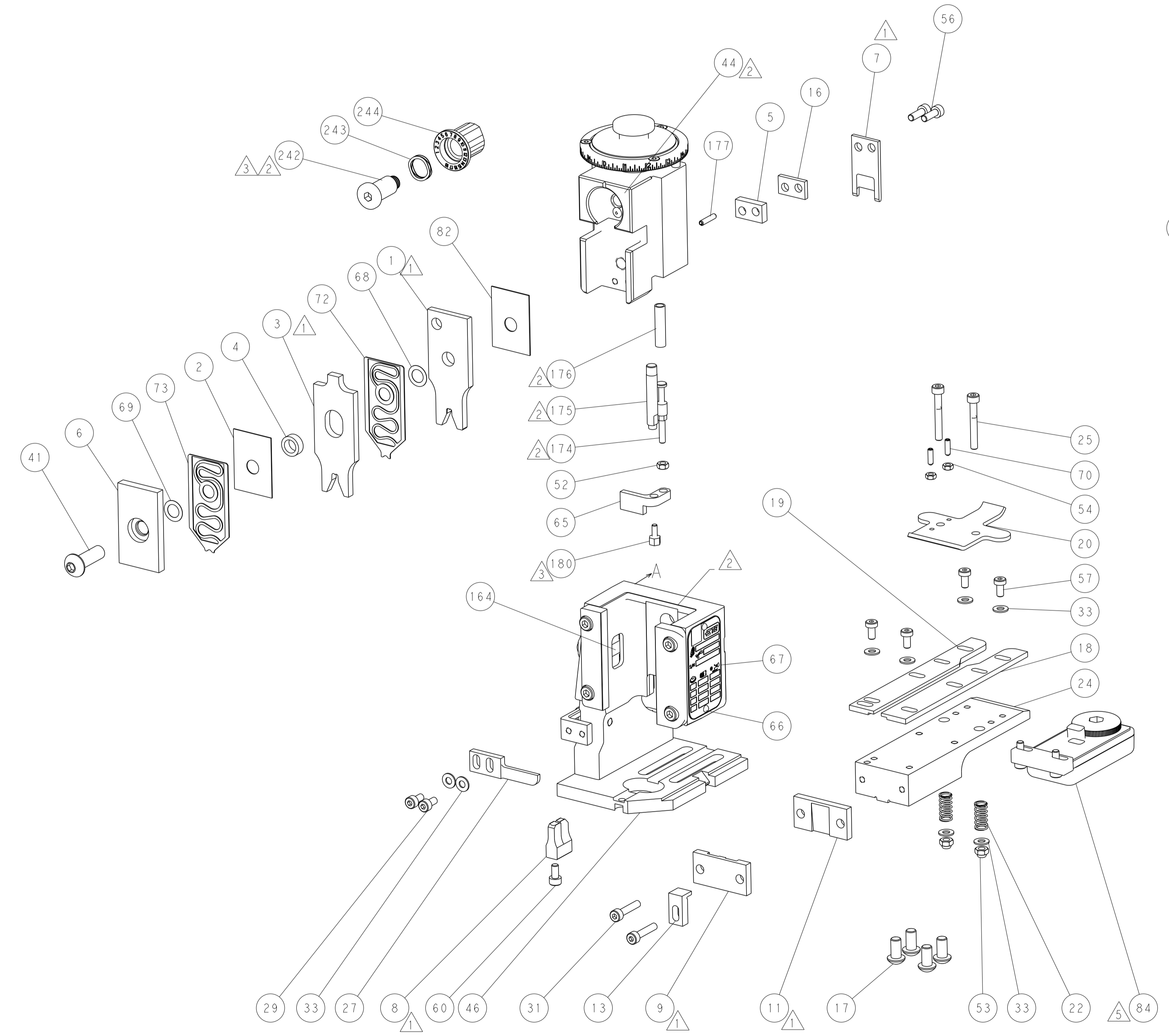
-	1	1	2119641-1	FEED CAM, AIR FEED	248	
-	1	1	2119082-6	CAM, SNAIL, INSULATION ADJUSTMENT	244	
-	1	1	2079764-1	WASHER, WAVE SPRING, CREST-TO-CREST	243	
3	-	1	1	2119083-1	RETAINER, INSULATION DIAL	242
-	1	1	2844940-4	AIR FEED MODULE	238	
3	-	1	1	1752354-2	STANDOFF,HOLD-DOWN	180
-	1	1	6-993111-6	PIN, SLOTTED SPRING 3.0 X 14.0	177	
-	1	1	8-22280-7	SPRING, COMPRESSION	176	
-	1	1	1752353-2	GUIDE PIN,HOLDDOWN	175	
-	1	1	1901680-2	GUIDE PIN,HOLDDOWN	174	
-	REFREF		994970-2	COUNTER, MAGNETIC	164	
5	-	1	1	2119955-2	ASSY, LUBRICATOR, END FEED	84
-	1	1	455888-5	SPACER, CRIMPER -	82	
-	1	1	1-2119791-2	DEPRESSOR, WIRE	73	
-	1	1	2119791-7	DEPRESSOR, WIRE	72	
-	1	1	1803607-4	DOCUMENTATION PACKAGE	71	
-	2	2	2-18032-2	SCR, SET, FLT PNT, M3 X 10.0	70	
-	1	1	2119943-1	WASHER, SPACER	69	
-	1	1	2119943-1	WASHER, SPACER	68	
-	1	1	2119740-1	TAG, IDENTIFICATION	67	
-	2	2	2168078-1	SCREW, DRIVE, RH, RoHS, 2 x .188	66	
-	1	1	1901681-1	HOLDDOWN, TERMINAL	65	
-	1	1	2168083-2	SCR, SKT HD CAP, RoHS, M4 X 8.0	60	
-	1	1	5-18022-5	SCR, HEX HD CAP, M4 X 6.0	59	
-	4	4	2168400-4	SHCS, LOW HEAD, RoHS, M4 X 8	57	
-	2	2	2168083-3	SCR, SKT HD CAP, RoHS, M4 X 12.0	56	
-	2	2	5018030-1	NUT, HEX, REG, RoHS, M3	54	
-	2	2	986965-8	NUT, LOCK, HEX, TORQUE (M4)	53	
-	1	1	1-5018030-0	NUT, HEX, REG, RoHS, M3.5	52	
-	1	1	2063961-9	FEED FINGER	51	
-	1	1	18023-9	SCR, SKT HD CAP M4 X 6.0	49	
-	1	1	2119655-5	APPLICATOR BASIC ASSEMBLY, EF	46	
-	1	1	1803517-1	RAM ASSEMBLY, EF ATLANTIC	44	
-	1	1	1803602-1	SCR, BHSC, RoHS (M8 X 25)	41	
-	8	8	1-18028-2	WASHER, FLAT, REG M4	33	
-	2	2	2168083-9	SCR, SKT HD CAP, RoHS, M4 X 20	31	
-	2	2	2168083-2	SCR, SKT HD CAP, RoHS, M4 X 8.0	29	
-	1	1	240639-1	STRIPPER (MACHINING)	27	
-	2	2	1-2168083-5	SCR, SKT HD CAP, RoHS, M4 X 30	25	
-	1	1	1752371-5	PLATE, STRIP GUIDE	24	
-	2	2	2-22281-3	SPRING, COMPRESSION	22	
-	1	1	1803292-4	DRAG	20	
-	1	1	1-1901696-9	STRIP GUIDE, REAR	19	
-	1	1	1-1901695-9	STRIP GUIDE, FRONT	18	
-	4	4	1-2079383-1	SCR, BHSC, RoHS (M6 X 12)	17	
-	1	1	240641-6	SPACER	16	
-	1	1	1752360-1	SPACER,HOLD-DOWN	13	
1	-	1	1	240644-9	PLATE, REAR SHEAR	11
-	-	-	-	-	10	
1	-	1	1	6-690482-3	PLATE, FRONT SHEAR	9
1	1	2	1	1803711-1	ANVIL, COMBINATION, END FEED -	8
1	-	1	1	1-2217206-0	BLADE, SLUG	7
-	1	1	1	1803203-1	BLOCK, FRONT DEPRESSOR	6
-	1	1	1	1-240641-2	SPACER	5
-	1	1	1	238011-3	BLOCK, CRIMPER SPACER	4
1	1	2	1	3-1803260-5	CRIMPER, INSULATION F PREMIUM -	3
-	1	1	1	455888-4	SPACER, CRIMPER -	2
1	1	2	1	2-1803482-1	CRIMPER, WIRE	1
-	77	72	2	PART NO	DESCRIPTION	ITEM NO

DIMENSIONS:		TOLERANCES UNLESS OTHERWISE SPECIFIED:		OWN: R. KNEPPER 20-MAR-18		TE Connectivity	
mm		0 PLC ±		CHK: T. BROOKENS 20-MAR-18		Harrisburg, PA 17105-3608	
		1 PLC ±		APVD: J. DEGRANGE 20-MAR-18		NAME: Ocean End Feed Applicator	
		2 PLC ±		PRODUCT SPEC		SIZE: CAGE CODE: DRAWING NO: RESTRICTED TO	
		3 PLC ±		APPLICATION SPEC		SCALE: 1:1 SHEET 1 OF 4 REV B	
		4 PLC ±		MATERIAL: FINISH:		WEIGHT: A1 00779 C=2150896	
		ANGLES		Customer Accessible Production Drawing		SCALE: 1:1 SHEET 1 OF 4 REV B	

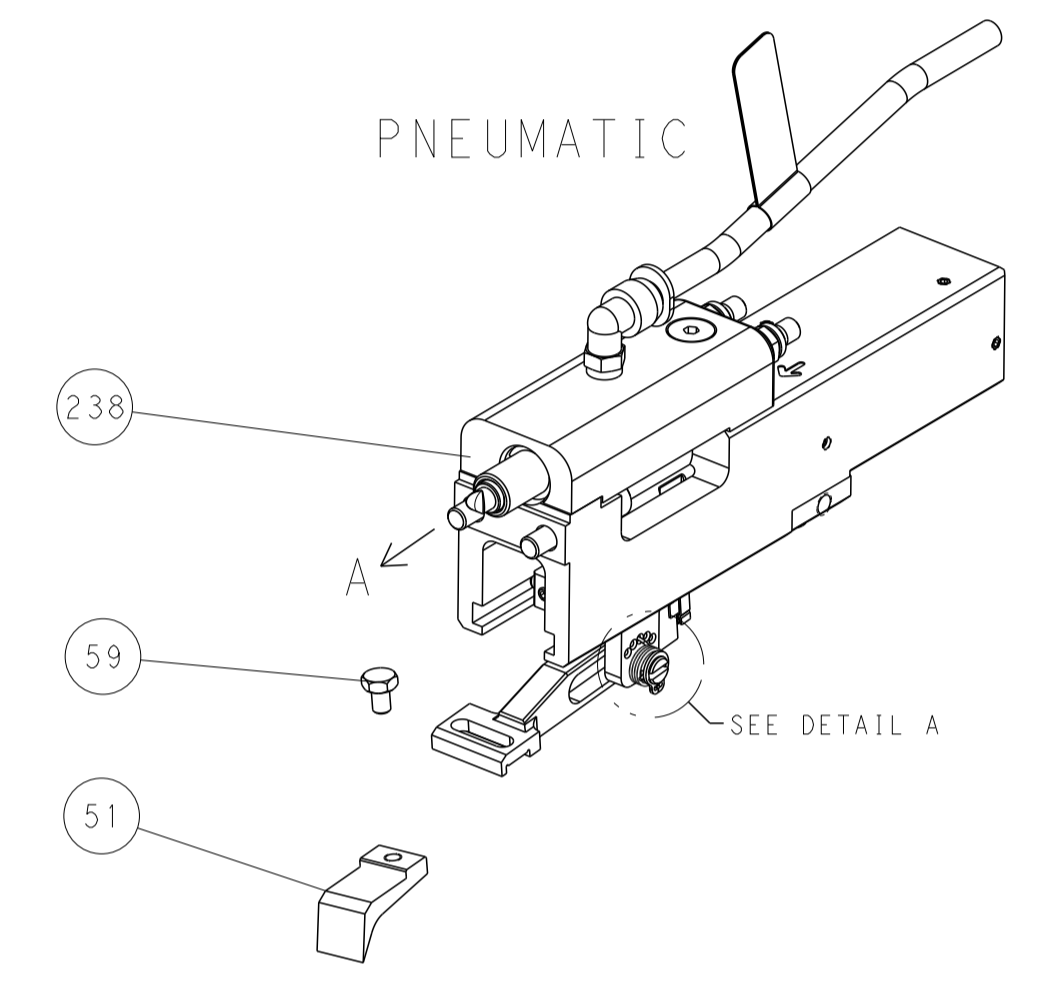
LOC		DIST		REVISIONS			
A	66	P	LTM	DESCRIPTION	DATE	DWN	APVD
		-		SEE SHEET 1			



RAM AND HOLDDOWN SET-UP

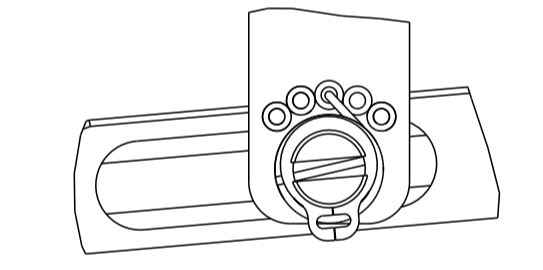


FEED TYPE



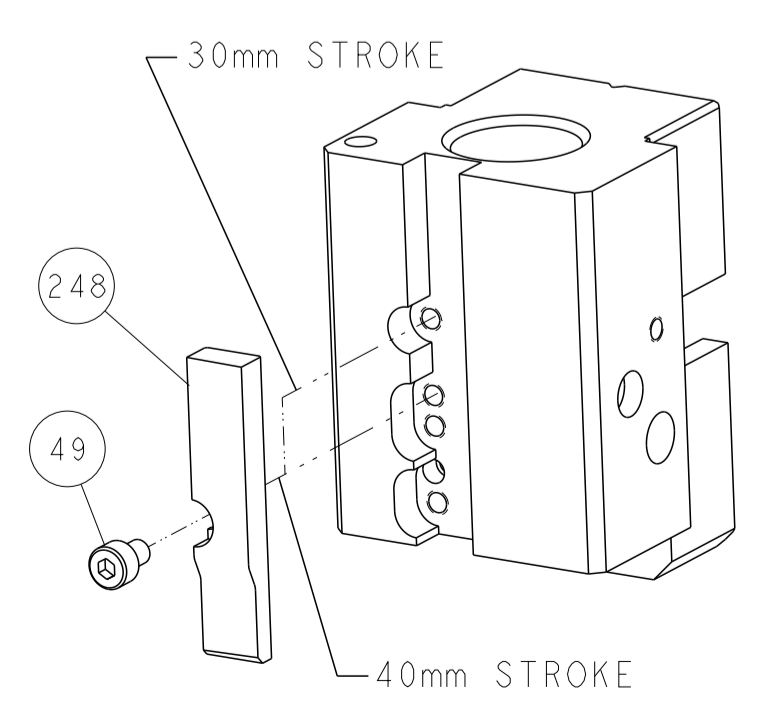
PNEUMATIC

FEED SPRING SETTING POSITION



DETAIL A

CAM POSITION



AIR FEED

<small>THIS DRAWING IS UNPUBLISHED. RELEASED FOR PUBLICATION BY TYCO ELECTRONICS CORPORATION. ALL RIGHTS RESERVED.</small>		DWN R. KNEPPER 20-MAR-18 CHK T. BROOKENS 20-MAR-18 APVD J. DEGRANGE 20-MAR-18	TE Connectivity Harrisburg, PA 17105-3608
DIMENSIONS: mm 		TOLERANCES UNLESS OTHERWISE SPECIFIED: 0 PLC ± 1 PLC ± 2 PLC ± 3 PLC ± 4 PLC ± ANGLES ± FINISH	NAME Ocean End Feed Applicator PRODUCT SPEC APPLICATION SPEC SIZE CAGE CODE DRAWING NO. RESTRICTED TO A 00779 C=2150896
MATERIAL:		WEIGHT:	SCALE 1:1 SHEET 2 OF 4 REV B Customer Accessible Production Drawing