

ATLANTIC VERSION TERMINATOR INTERFACE ADAPTER	PART NUMBER	REVISION	DESCRIPTION	FEED TYPE	APPLICATOR STYLE CONVERSION CHART						
					CONVERT TO	PART NUMBERS REQUIRED					
	2150907-2	A	FINE CRIMP HEIGHT ADJUST	PNEUMATIC	-	-	-	-	-	-	
	2150907-5	A	FINE CRIMP HEIGHT ADJUST	SERVO LATCH PLATE	SERVO LATCH PLATE	2119951-1	1901697-1	8-2150907-5	-	-	2168400-7 (QUANTITY 2)
					SMART APPLICATOR	2161326-1	-	8-2150907-4	-	-	-
	2150907-6	A	NON-CRIMP HEIGHT ADJUST	SERVO LATCH PLATE	PNEUMATIC FEED	2119950-1	2119792-2	-	2119641-1	-	2063440-2
					-	-	-	-	-	-	-
	2150907-7	A	FINE CRIMP HEIGHT ADJUST	NONE	-	-	-	-	-	-	-
	7-2150907-7	A	CRIMP TOOLING KIT	-	-	-	-	-	-	-	-

APPLICATOR DATA		
CRIMP	SIZE	TYPE
WIRE	5.08 mm [.200]	F
INSUL	6.50 mm [.256]	F
APPL INSTRUCTIONS 408-10390		

TERMINAL DATA: HS UNITED EUROPEAN TERMINAL TE CRIMP SPECIFICATION			
TERMINAL NAME: RING CABLE LUG TERMINAL			
WIRE STRIP LENGTH 5.74-6.50 mm [.226-.256 IN]		INSULATION DIAMETER RANGE Ø 3.66-4.88 mm [.144-.192 IN]	
TERMINAL APPLICATION SPECIFICATION	NONE Rev -	-	-
TERMINALS APPLIED			
TE TERMINAL	HS UNITED EUROPEAN TERMINAL	TE TERMINAL	HS UNITED EUROPEAN TERMINAL
3311173-1	28.462.120	3311173-2	28.462.110
3311173-3	28.462.310	3311173-4	28.462.320

WIRE SIZE	CRIMP HEIGHT mm [INCH]	CRIMP HEIGHT REFERENCE SETTING
6.00mm2	3.21+/-0.05 [.126+/- .002]	5.6
5.00mm2	3.04+/-0.05 [.120+/- .002]	7.6
4.00mm2	2.88+/-0.05 [.113+/- .002]	9.0
3.00mm2	2.71+/-0.05 [.107+/- .002]	11.2
2.50mm2	2.63+/-0.05 [.104+/- .002]	11.8

- RECOMMENDED SPARE PARTS
- GREASE BEARING SURFACES LIGHTLY
- 3. LUBRICATE DAILY PER THE APPLICATOR INSTRUCTION SHEET SUPPLIED WITH THE APPLICATOR.
- APPLICATOR SPECIFIC DATA TO BE ENTERED INTO BLANK MEMORY CHIP AT ASSEMBLY. SEE BELOW FOR PART NUMBER:
 PNEUMATIC FEED WITH "SMART APPLICATOR" CONVERSION: 8-2150907-4
 SERVO FEED WITH "FINE CRIMP HEIGHT ADJUST": 8-2150907-5
 SERVO FEED WITH "NON-CRIMP HEIGHT ADJUST": 8-2150907-6
- 5. ADJUSTMENT OF THE STRIPPER MAY BE REQUIRED WHEN MOVING THE APPLICATOR BETWEEN BENCH AND LEADMAKER APPLICATIONS.
- APPLY PART NUMBER 1-23419-5 LOCTITE TO THREADS OF ITEMS 62 & 180. APPLY PART NUMBER 2-23419-6 LOCTITE TO THREADS OF ITEM 242. FOR -6 ONLY APPLY PART NUMBER 1-23419-5 LOCTITE TO THREADS OF ITEMS 37 & 180.
- GREASE THREADS, GROOVE AND O-RING ON ITEMS 35 & 252.
- MAGNET, ITEM 166 MUST BE ORIENTED CORRECTLY IN ORDER TO PROPERLY ACTUATE THE COUNTER.
- CRIMP HEIGHT REFERENCE SETTING WAS THE SETTING USED WHEN THE APPLICATOR WAS QUALIFIED AT THE FACTORY. ADJUSTMENT MAY BE NECESSARY WHEN RUNNING APPLICATOR IN THE FIELD.
- TERMINAL PITCH NOT COMPATIBLE WITH MECHANICAL FEED.
- WHEN ASSEMBLING -6 NON-CRIMP HEIGHT ADJUST APPLICATOR USE SHIM PACK 2119957-2 TO ALIGN APPLICATOR'S MAXIMUM WIRE CRIMP HEIGHT AT NORMAL TERMINATOR SHUT HEIGHT
- 12. UNLESS SPECIFIED OTHERWISE TORQUE VALUES SHALL BE USED PER DOCUMENT 101-35000.
- TERMINAL LUBRICANT IS RECOMMENDED.

***WARNING**
 ON INSTALLATION, SET WIRE DISC, ITEM 40 TO LARGEST WIRE SIZE SETTING. USE OF SETTINGS BELOW MINIMUM REQUIRED CRIMP HEIGHT SETTING WILL CAUSE DAMAGE TO CRIMP TOOLING.

-	-	1	-	-	2119957-2	APPLICATOR SHIM PACK	260
-	1	-	1	1	8-21084-0	O-RING, .676 ID, .070 DIA. MAT.	252
-	-	-	-	1	2119640-1	PUSH ROD, AIR FEED	250
-	-	-	-	1	1803259-1	BUSHING, FLANGED	249
-77	-7	-6	-5	-2	PART NO	DESCRIPTION	ITEM NO

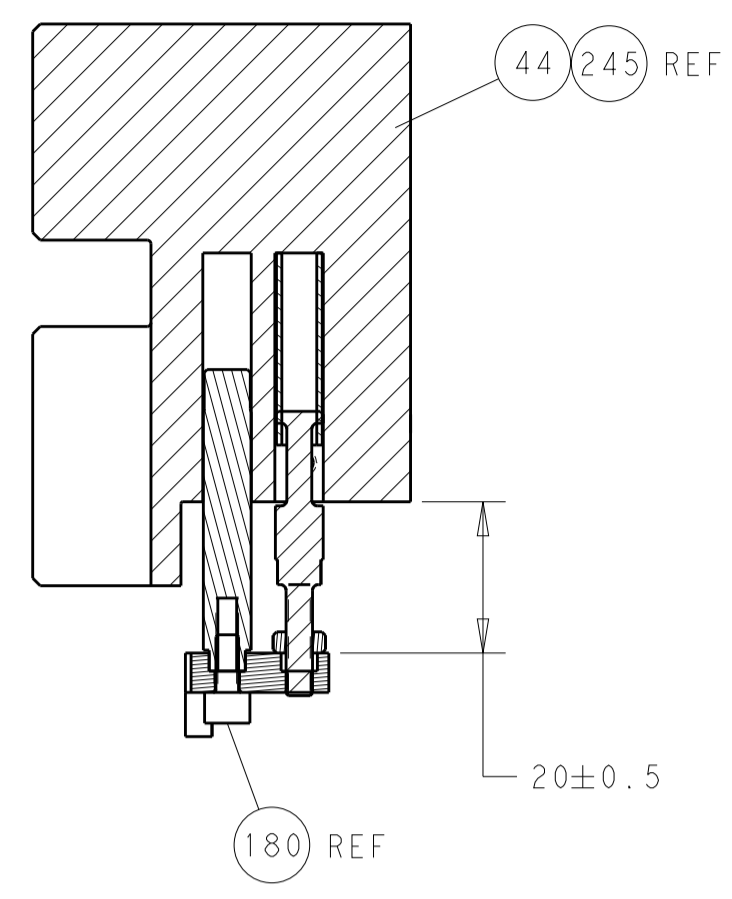
ATLANTIC VERSION
 Shown on sheets 1 of 4 & 2 of 4
 (Pacific version shown on sheets 3 of 4 & 4 of 4)

SET UP GAUGE	LOC	DIST	REVISIONS			
2119599-2	A	66	REV	DATE	OWN	APVD
			1	DEVELOPMENT	09APR2018	FZ KZ
			A	RELEASED	02MAY2018	FZ KZ

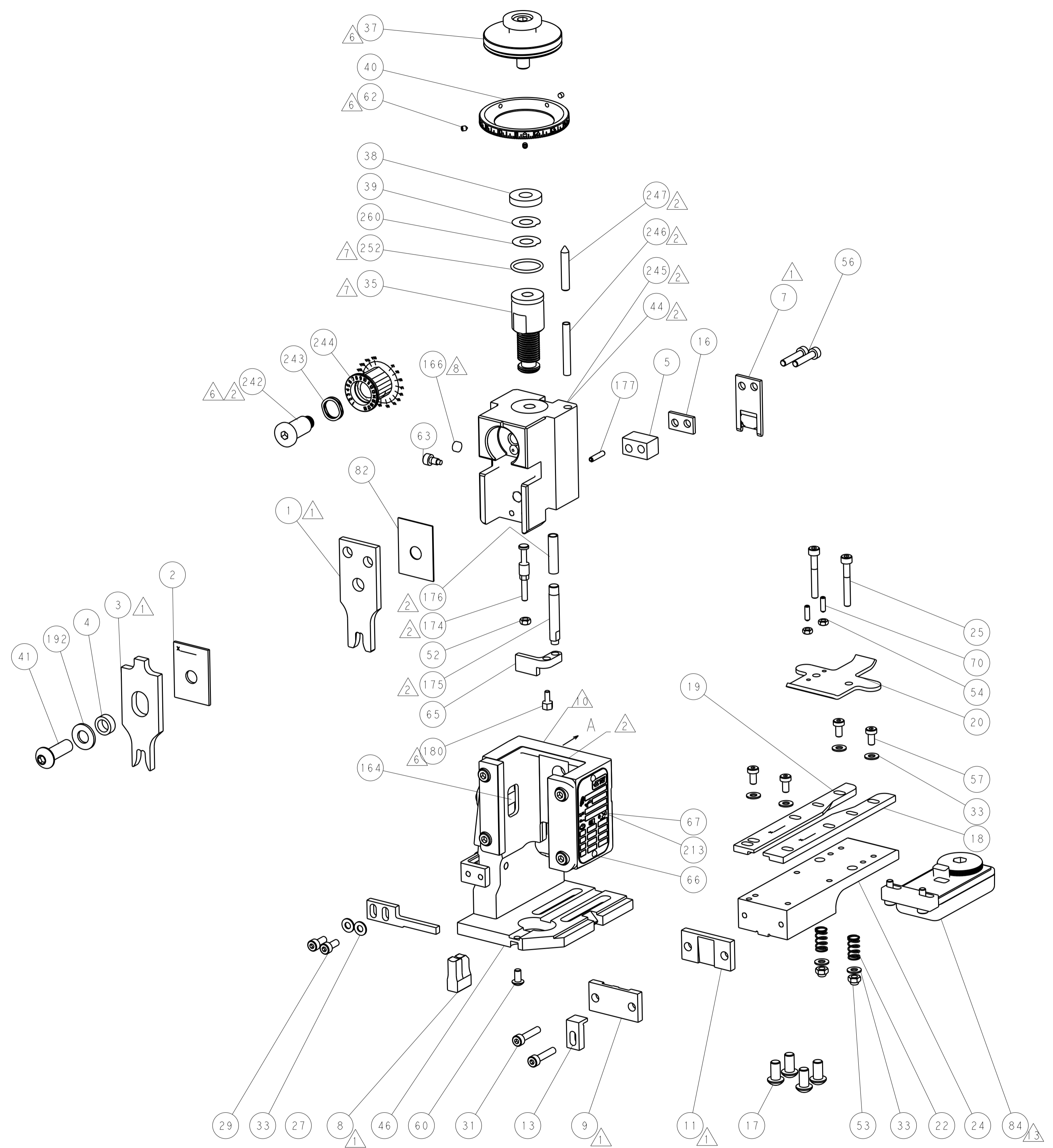
-	-	-	-	1	2119641-1	FEED CAM, AIR FEED	248
-	-	1	-	1	2119798-1	DETENT PIN	247
-	1	-	1	1	1-22279-3	SPRING, COMPRESSION	246
-	-	1	-	-	2119759-1	RAM, AMP STYLE, END FEED, NON-ADJUST	245
-	1	1	1	1	2119082-6	CAM, SNAIL, INSULATION ADJUSTMENT	244
-	1	1	1	1	2079764-1	WASHER, WAVE SPRING, CREST-TO-CREST	243
	-	1	1	1	2119083-1	RETAINER, INSULATION DIAL	242
-	-	2	2	-	2168400-7	SHCS, LOW HEAD, RoHS, M5 X 10	240
-	-	-	-	1	2063440-2	AIR FEED MODULE	238
-	-	1	1	-	2119740-2	TAG, IDENTIFICATION	213
-	1	1	1	1	1-18028-0	WASHER, FLAT, REG M8	192
	-	REF	REF	-	1901697-1	FEED FINGER ASSEMBLY, EF	183
-	1	1	1	1	1752354-1	STANDOFF, HOLD-DOWN	180
-	1	1	1	1	6-993111-6	PIN, SLOTTED SPRING 3.0 X 14.0	177
-	1	1	1	1	8-22280-7	SPRING, COMPRESSION	176
-	1	1	1	1	1752353-2	GUIDE PIN, HOLDDOWN	175
-	1	1	1	1	1901680-2	GUIDE PIN, HOLDDOWN	174
-	-	-	-	2	21045-3	RING, RETAIN, EXTERN, 3/16 CRESCENT	172
-	1	1	1	1	994969-1	MAGNET, RARE EARTH HIGH ENERGY	166
-	REF	REF	REF	REF	994970-2	COUNTER, MAGNETIC	164
-	-	-	-	1	240638-1	SPRING, FEED FINGER	163
-	-	-	-	1	3-23627-7	PIN, RETAIN, GRVD, 3/16 X .854	137
-	REF	REF	REF	REF	-	SEE NOTE 4 MEMORY CHIP, PROGRAMMED	135
-	-	1	1	-	1633743-1	SERVO FEED LATCH ASM	133
-	1	1	1	1	2119955-2	ASSY, LUBRICATOR, END FEED	84
-	1	1	1	1	455888-5	SPACER, CRIMPER	82
-	1	1	1	1	2119956-2	DOCUMENTATION PACKAGE	71
-	2	2	2	2	2-18032-2	SCR, SET, FLT PNT, M3 X 10.0	70
-	1	-	-	1	2119740-1	TAG, IDENTIFICATION	67
-	2	2	2	2	2168078-1	SCREW, DRIVE, RH, RoHS, 2 x .188	66
-	1	1	1	1	1901681-1	HOLDDOWN, TERMINAL	65
	-	1	-	1	2119793-1	LIMITER, ADJUSTMENT BOLT	63
-	3	-	3	3	992763-5	SCR, SET, SOC, CONE PNT, M3 x 4.0	62
-	1	1	1	1	2079383-4	SCR, BHSC, RoHS (M4 X 8)	60
-	4	4	4	4	2168400-4	SHCS, LOW HEAD, RoHS, M4 X 8	57
-	2	2	2	2	2168083-9	SCR, SKT HD CAP, RoHS, M4 X 20	56
-	2	2	2	2	5018030-1	NUT, HEX, REG, RoHS, M3	54
-	2	2	2	2	986965-8	NUT, LOCK, HEX, TORQUE (M4)	53
-	1	1	1	1	1-5018030-0	NUT, HEX, REG, RoHS, M3.5	52
-	-	-	-	1	2119792-2	PAWL, EF, AIR	51
-	-	-	-	1	18023-9	SCR, SKT HD CAP M4 X 6.0	49
-	1	1	1	1	2119655-5	APPLICATOR BASIC ASSEMBLY, EF	46
-	1	-	-	1	2119369-1	RAM, AMP STYLE, END FEED	44
-	1	1	1	1	2079383-7	SCR, BHSC, RoHS (M8 X 25)	41
-	1	-	-	1	2119645-1	DISC, NUMBERED FA WIRE ADJUSTMENT	40
-	1	-	-	1	2119957-1	APPLICATOR SHIM PACK	39
	-	1	1	1	2119644-4	RAM WASHER, PRECISION	38
-	1	1	1	1	2119085-1	FA HEAD, ATLANTIC STYLE	37
-	1	-	-	1	2119092-1	BOLT, ADJUSTMENT	35
-	8	8	8	8	1-18028-2	WASHER, FLAT, REG M4	33
-	2	2	2	2	2168083-9	SCR, SKT HD CAP, RoHS, M4 X 20	31
-	2	2	2	2	1-2168083-0	SCR, SKT HD CAP, RoHS, M4 X 10	29
-	1	1	1	1	690455-1	STRIPPER, FRONT CASTING	27
-	2	2	2	2	1-2168083-5	SCR, SKT HD CAP, RoHS, M4 X 30	25
-	1	1	1	1	1-1752371-6	PLATE, STRIP GUIDE	24
-	2	2	2	2	22281-8	SPRING, COMPRESSION	22
-	1	1	1	1	1803292-4	DRAG	20
-	1	1	1	1	5-1901696-2	STRIP GUIDE, REAR	19
-	1	1	1	1	5-1901695-2	STRIP GUIDE, FRONT	18
-	4	4	4	4	1-2079383-1	SCR, BHSC, RoHS (M6 X 12)	17
-	1	1	1	1	240641-9	SPACER	16
-	1	1	1	1	1752360-1	SPACER, HOLD-DOWN	13
	-	1	1	1	240644-5	PLATE, REAR SHEAR	11
-	-	-	-	-	-	-	10
	-	1	1	1	6-690482-3	PLATE, FRONT SHEAR	9
	1	1	1	1	1803711-3	ANVIL, COMBINATION, END FEED	8
	-	1	1	1	1-2217206-2	BLADE, SLUG	7
-	-	-	-	-	-	-	6
-	1	1	1	1	4-240641-4	SPACER	5
-	1	1	1	1	3-238011-4	BLOCK, CRIMPER SPACER	4
	1	1	1	1	1-1803384-9	CRIMPER, INSULATION F	3
-	1	1	1	1	1-455888-5	SPACER, CRIMPER	2
	1	1	1	1	7-1803470-4	CRIMPER, WIRE F	1
-77	-7	-6	-5	-2	PART NO	DESCRIPTION	ITEM NO

DIMENSIONS:		TOLERANCES UNLESS OTHERWISE SPECIFIED:		DWG		CHK		APVD		NAME	
mm	0 PLC ±	1 PLC ±	2 PLC ±	3 PLC ±	4 PLC ±	ANGLES ±	FINISH ±	FE ZHANG	09APR2018	K. ZHANG	09APR2018
MATERIAL				WEIGHT				Customer Accessible Production Drawing			
SCALE 1:1				SHEET 1 OF 4				REV A			

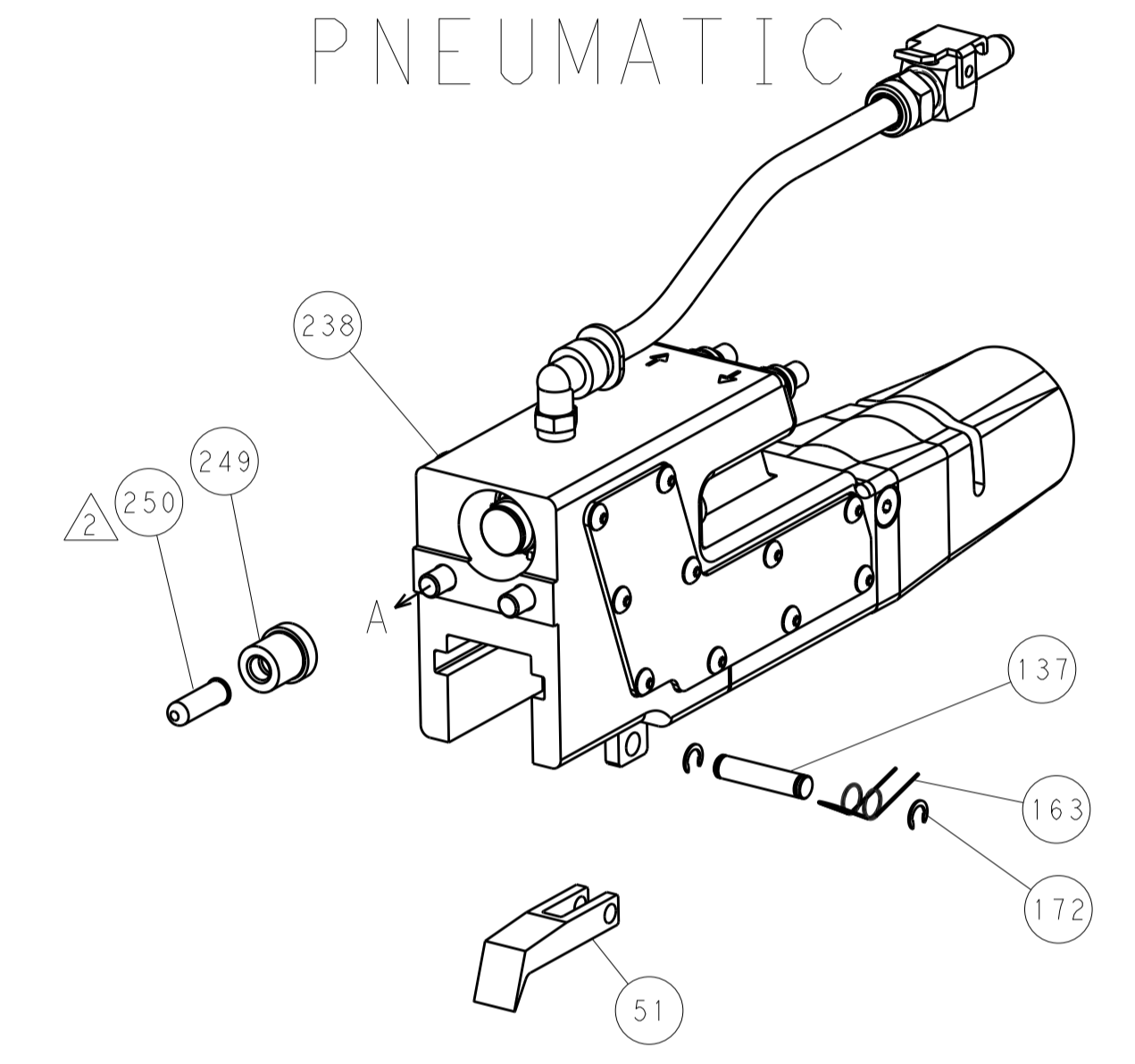
LOC	DIST	REV	DATE	BY	APPV
A	66				
		REVISIONS			
		DESCRIPTION	DATE	BY	APPV
		SEE SHEET 1			



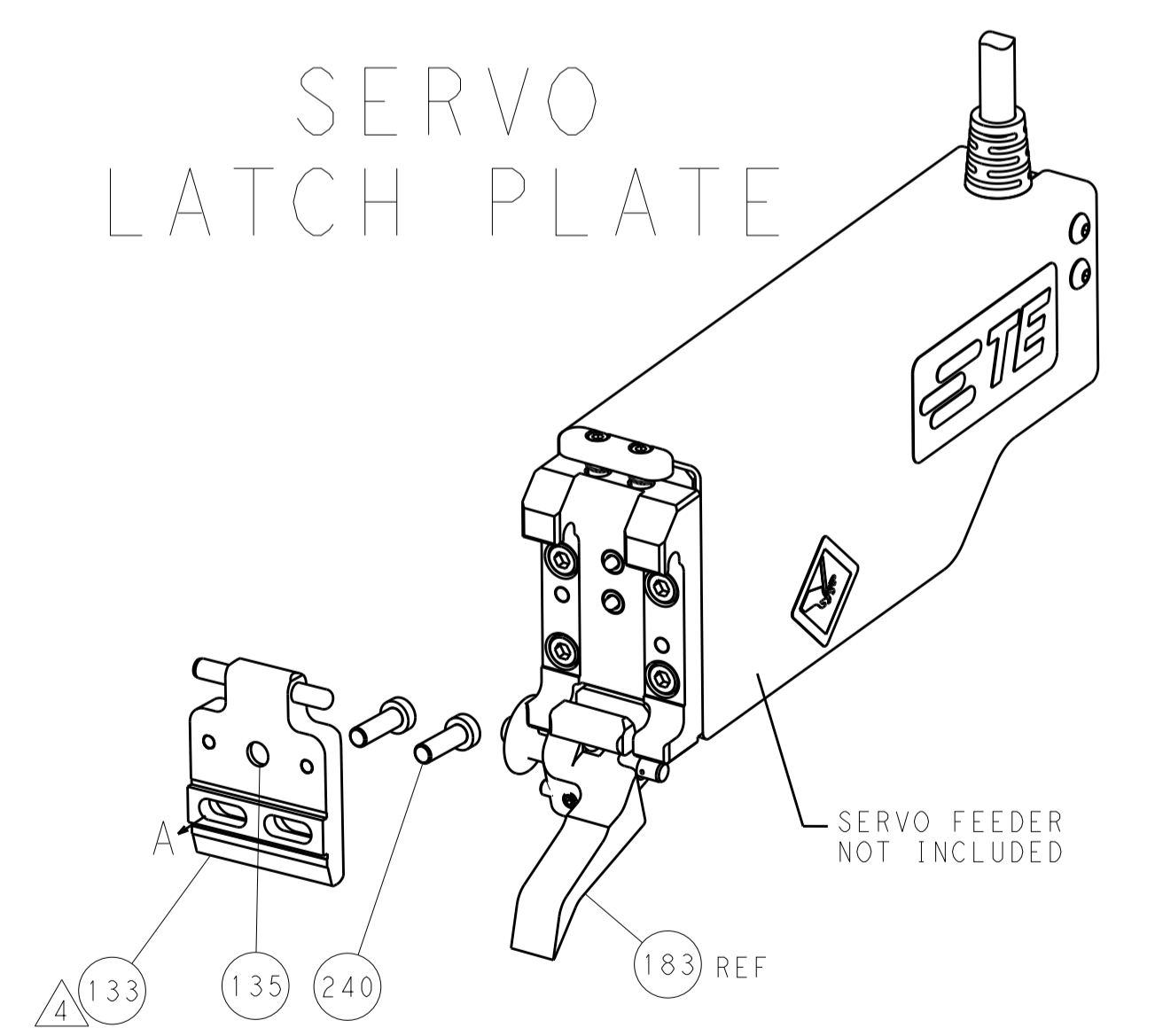
HOLDDOWN SET-UP



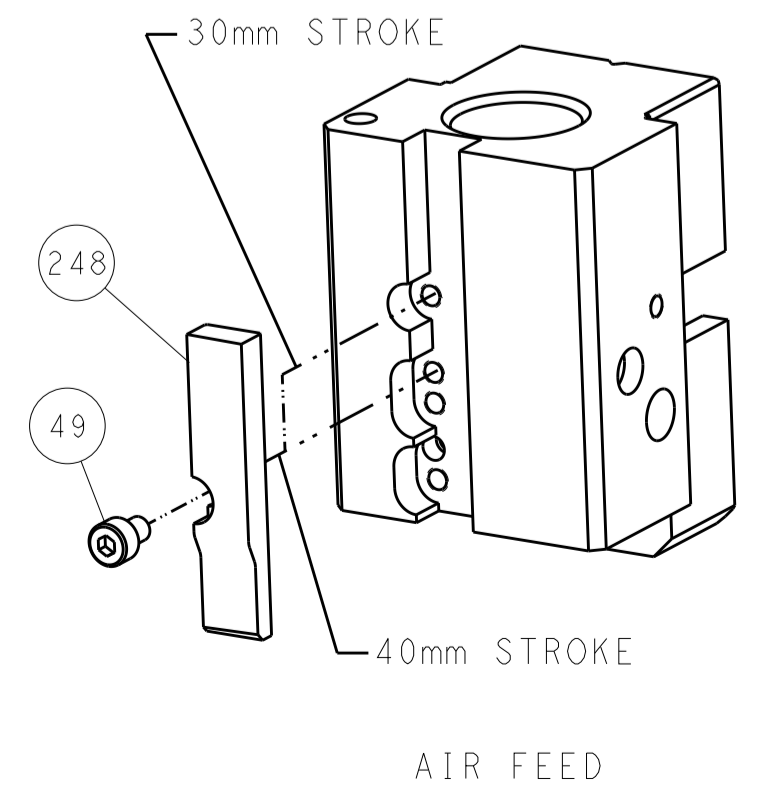
FEED TYPE
PNEUMATIC



SERVO
LATCH PLATE



CAM POSITION



AIR FEED

ATLANTIC VERSION
 Shown on sheets 1 of 4 & 2 of 4
 (Pacific version shown on sheets 3 of 4 & 4 of 4)

<small>THIS DRAWING IS UNPUBLISHED. RELEASED FOR PUBLICATION BY TYCO ELECTRONICS CORPORATION. ALL RIGHTS RESERVED.</small>		DWN: F. ZHANG 09APR2018 CHK: K. ZHANG 09APR2018 APVD: K. ZHANG 09APR2018	TE Connectivity Harrisburg, PA 17105-3608
DIMENSIONS: mm TOLERANCES UNLESS OTHERWISE SPECIFIED: 0 PLC ± 1 PLC ± 2 PLC ± 3 PLC ± 4 PLC ± ANGLES ±		NAME: Ocean End Feed Applicator PRODUCT SPEC: APPLICATION SPEC: SIZE: A1 CAGE CODE: 00779 DRAWING NO: 2150907	RESTRICTED TO: SCALE: 1:1 SHEET: 2 OF 4 REV: A
MATERIAL:		WEIGHT:	Customer Accessible Production Drawing

PACIFIC VERSION TERMINATOR INTERFACE ADAPTER	PART NUMBER	REVISION	DESCRIPTION	FEED TYPE
	2-2150907-2	A	FINE CRIMP HEIGHT ADJUST	PNEUMATIC
	2-2150907-5	A	FINE CRIMP HEIGHT ADJUST	SERVO LATCH PLATE ⁴
	2-2150907-7	A	FINE CRIMP HEIGHT ADJUST	NONE
	7-2150907-7	A	CRIMP TOOLING KIT	-

APPLICATOR DATA		
CRIMP	SIZE	TYPE
WIRE	5.08 mm [.200]	F
INSUL	6.50 mm [.256]	F
APPL INSTRUCTIONS 408-10390		

TERMINAL DATA: HS UNITED EUROPEAN TERMINAL TE CRIMP SPECIFICATION			
TERMINAL NAME: RING CABLE LUG TERMINAL			
WIRE STRIP LENGTH	INSULATION DIAMETER RANGE		
5.74-6.50 mm [.226-.256 IN]	∅ 3.66-4.88 mm [.144-.192 IN]		
TERMINAL APPLICATION SPECIFICATION	NONE Rev -	-	-
TERMINALS APPLIED ^{10,13}			
TE TERMINAL	HS UNITED EUROPEAN TERMINAL	TE TERMINAL	HS UNITED EUROPEAN TERMINAL
3311173-1	28.462.120	3311173-2	28.462.110
3311173-3	28.462.310	3311173-4	28.462.320

WIRE SIZE	CRIMP HEIGHT mm [INCH]	CRIMP HEIGHT REFERENCE SETTING ⁹
6.00mm2	3.21+/-0.05 [.126+/- .002]	5.6
5.00mm2	3.04+/-0.05 [.120+/- .002]	7.6
4.00mm2	2.88+/-0.05 [.113+/- .002]	9.0
3.00mm2	2.71+/-0.05 [.107+/- .002]	11.2
2.50mm2	2.63+/-0.05 [.104+/- .002]	11.8

- RECOMMENDED SPARE PARTS
- GREASE BEARING SURFACES LIGHTLY
- 3. LUBRICATE DAILY PER THE APPLICATOR INSTRUCTION SHEET SUPPLIED WITH THE APPLICATOR.
- ⁴ APPLICATOR SPECIFIC DATA TO BE ENTERED INTO BLANK MEMORY CHIP AT ASSEMBLY. SEE BELOW FOR PART NUMBER:
PNEUMATIC FEED WITH "SMART APPLICATOR" CONVERSION: 8-2150907-4
SERVO FEED WITH "FINE CRIMP HEIGHT ADJUST": 8-2150907-5
- 5. ADJUSTMENT OF THE STRIPPER MAY BE REQUIRED WHEN MOVING THE APPLICATOR BETWEEN BENCH AND LEADMAKER APPLICATIONS.
- ⁶ APPLY PART NUMBER 1-23419-5 LOCTITE TO THREADS OF ITEMS 62 & 180.
APPLY PART NUMBER 2-23419-6 LOCTITE TO THREADS OF ITEM 242.
- GREASE THREADS, GROOVE AND O-RING ON ITEMS 139 & 153.
- MAGNET, ITEM 166 MUST BE ORIENTED CORRECTLY IN ORDER TO PROPERLY ACTUATE THE COUNTER.
- ⁹ CRIMP HEIGHT REFERENCE SETTING WAS THE SETTING USED WHEN THE APPLICATOR WAS QUALIFIED AT THE FACTORY. ADJUSTMENT MAY BE NECESSARY WHEN RUNNING APPLICATOR IN THE FIELD.
- ¹⁰ TERMINAL PITCH NOT COMPATIBLE WITH MECHANICAL FEED.
- ¹¹ THE RECOMMENDED SET-UP FOR END FEED APPLICATORS IS POST-FEED WITH ITEM 2119653-1. THE APPLICATOR CAN BE CONFIGURED FOR PRE-FEED WITH ITEM 2119652-1 BUT MAY ENCOUNTER PROBLEMS WITH SOME APPLICATIONS. FEED ISSUES OR TERMINAL JAMMING MAY OCCUR IN THE PRE-FEED CONFIGURATION.
- 12. UNLESS SPECIFIED OTHERWISE TORQUE VALUES SHALL BE USED PER DOCUMENT 101-35000.
- ¹³ TERMINAL LUBRICANT IS RECOMMENDED.

-	1	1	1	2119782-1	FINE ADJUST HEAD ASM, PACIFIC STYLE	251	
-	-	-	1	2119640-1	PUSH ROD, AIR FEED	250	
-	77	27	25	22	PART NO	DESCRIPTION	ITEM NO

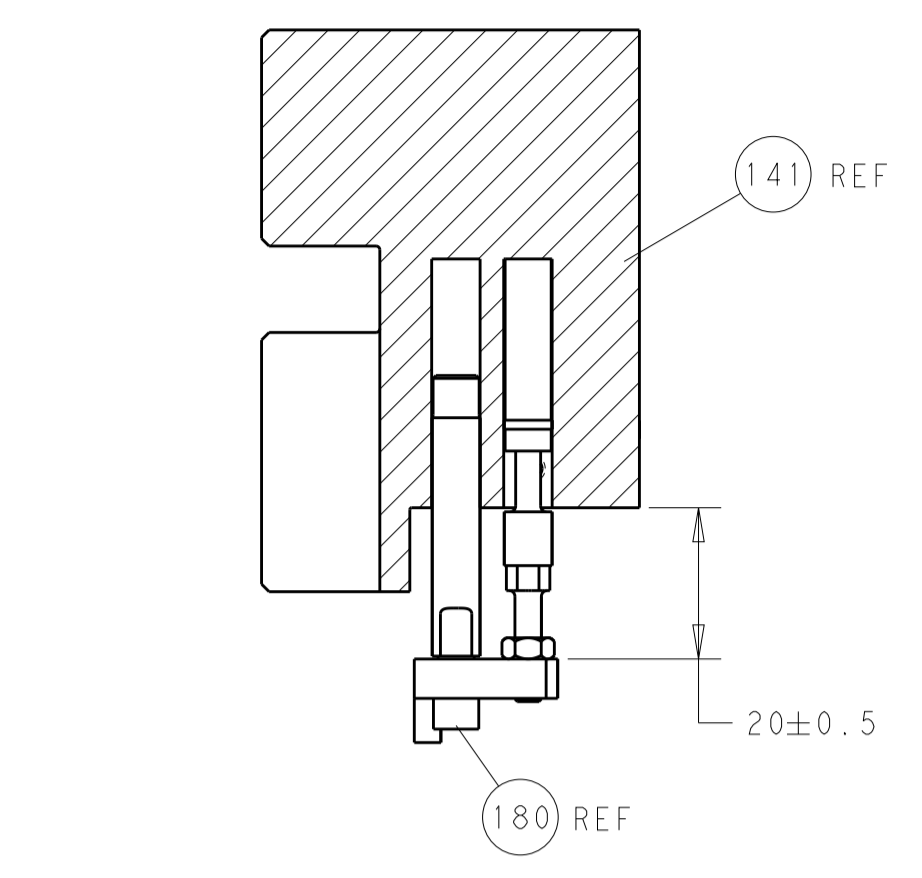
PACIFIC VERSION
Shown on sheets 3 of 4 & 4 of 4
(Atlantic version shown on sheets 1 of 4 & 2 of 4)

SET UP GAUGE	LOC	DIST	REVISIONS			
2119599-2	A	66	REV	DATE	BY	APPV
-	-	-	1	SEE SHEET 1	-	-

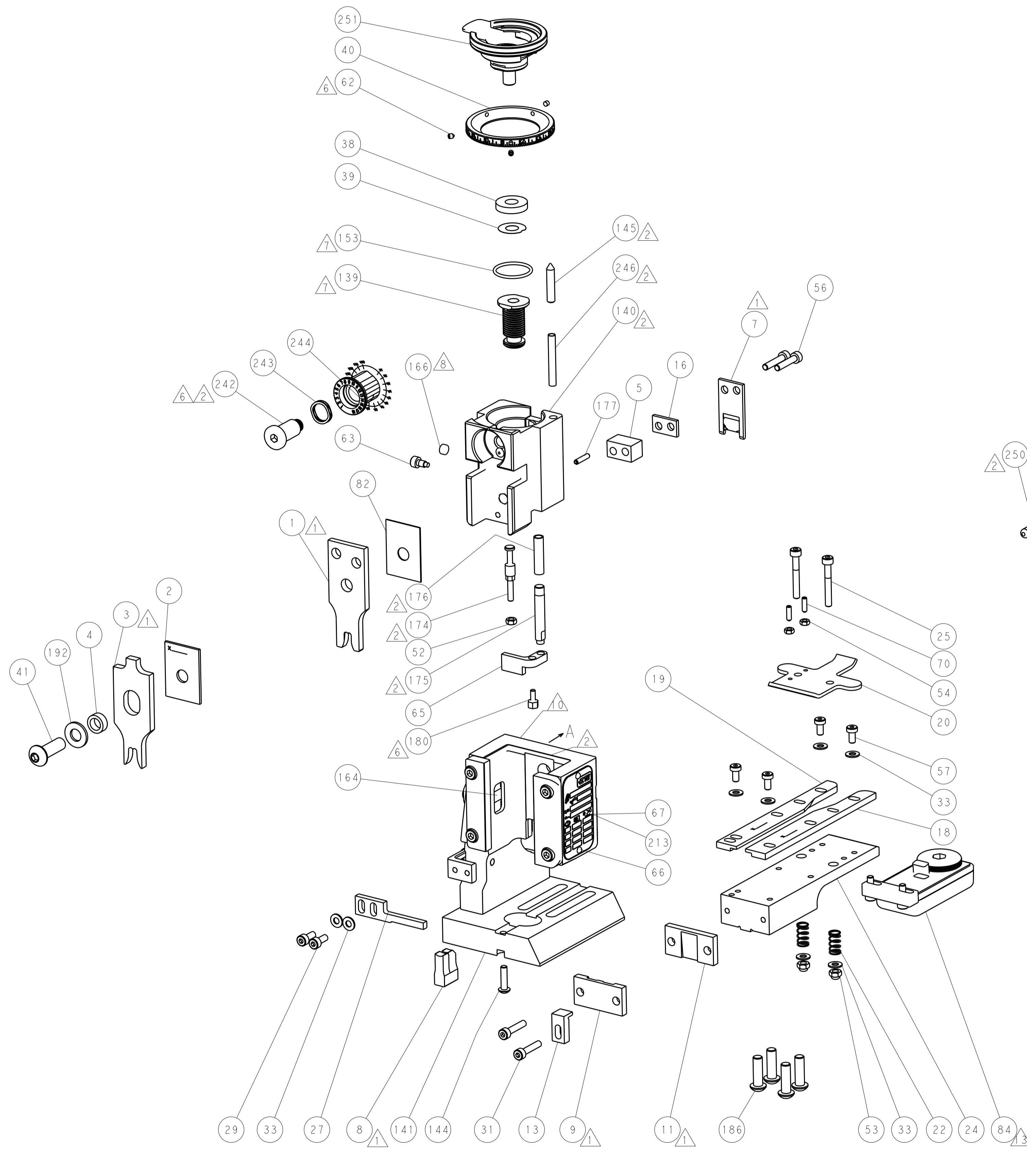
REV	DATE	BY	APPV	DESCRIPTION	DATE	BY	APPV
-	-	-	1	1803259-1	BUSHING, FLANGED	-	249
-	1	1	1	1-22279-3	SPRING, COMPRESSION	-	246
-	1	1	1	2119082-6	CAM, SNAIL, INSULATION ADJUSTMENT	-	244
-	1	1	1	2079764-1	WASHER, WAVE SPRING, CREST-TO-CREST	-	243
-	1	1	1	2119083-1	RETAINER, INSULATION DIAL	-	242
-	-	2	-	2168400-7	SHCS, LOW HEAD, RoHS, M5 X 10	-	240
-	-	-	1	2063440-2	AIR FEED MODULE	-	238
-	-	1	-	2119740-2	TAG, IDENTIFICATION	-	213
-	1	1	1	1-18028-0	WASHER, FLAT, REG M8	-	192
-	4	4	4	2079383-9	SCR, BHSC, RoHS (M6 X 20)	-	186
-	-	REF	-	1901697-1	FEED FINGER ASSEMBLY, EF	-	183
-	1	1	1	1752354-1	STANDOFF, HOLD-DOWN	-	180
-	1	1	1	6-993111-6	PIN, SLOTTED SPRING 3.0 X 14.0	-	177
-	1	1	1	8-22280-7	SPRING, COMPRESSION	-	176
-	1	1	1	1752353-2	GUIDE PIN, HOLDDOWN	-	175
-	1	1	1	1901680-2	GUIDE PIN, HOLDDOWN	-	174
-	-	-	2	21045-3	RING, RETAIN, EXTERN, 3/16 CRESCENT	-	172
-	1	1	1	994969-1	MAGNET, RARE EARTH HIGH ENERGY	-	166
-	REF	REF	REF	994970-2	COUNTER, MAGNETIC	-	164
-	-	-	1	240638-1	SPRING, FEED FINGER	-	163
-	1	1	1	8-21084-1	O-RING, .801 ID, .070 DIA. MAT.	-	153
-	-	-	1	2119641-2	FEED CAM, AIR FEED	-	152
-	1	1	1	2119798-2	DETENT PIN	-	145
-	1	1	1	2079383-8	SCR, BHSC, RoHS (M4 X 16)	-	144
-	1	1	1	2119655-6	APPLICATOR BASIC ASSEMBLY, EF	-	141
-	1	1	1	2119651-1	RAM, ASIAN STYLE, END FEED	-	140
-	1	1	1	2119092-2	BOLT, ADJUSTMENT	-	139
-	-	-	1	3-23627-7	PIN, RETAIN, GRVD, 3/16 X .854	-	137
-	-	REF	-	SEE NOTE 4	MEMORY CHIP, PROGRAMMED	-	135
-	-	1	-	1633743-1	SERVO FEED LATCH ASM	-	133
-	1	1	1	2119955-2	ASSY, LUBRICATOR, END FEED	-	84
-	1	1	1	455888-5	SPACER, CRIMPER	-	82
-	1	1	1	2119956-2	DOCUMENTATION PACKAGE	-	71
-	2	2	2	2-18032-2	SCR, SET, FLT PNT, M3 X 10.0	-	70
-	1	-	1	2119740-1	TAG, IDENTIFICATION	-	67
-	2	2	2	2168078-1	SCREW, DRIVE, RH, RoHS, 2 x .188	-	66
-	1	1	1	1901681-1	HOLDDOWN, TERMINAL	-	65
-	1	1	1	2119793-1	LIMITER, ADJUSTMENT BOLT	-	63
-	3	3	3	992763-5	SCR, SET, SOC, CONE PNT, M3 X 4.0	-	62
-	4	4	4	2168400-4	SHCS, LOW HEAD, RoHS, M4 X 8	-	57
-	2	2	2	2168083-9	SCR, SKT HD CAP, RoHS, M4 X 20	-	56
-	2	2	2	5018030-1	NUT, HEX, REG, RoHS, M3	-	54
-	2	2	2	986965-8	NUT, LOCK, HEX, TORQUE (M4)	-	53
-	1	1	1	1-5018030-0	NUT, HEX, REG, RoHS, M3.5	-	52
-	-	-	1	2119792-2	PAWL, EF, AIR	-	51
-	-	-	1	18023-9	SCR, SKT HD CAP M4 X 6.0	-	49
-	1	1	1	2079383-7	SCR, BHSC, RoHS (M8 X 25)	-	41
-	1	1	1	2119645-1	DISC, NUMBERED FA WIRE ADJUSTMENT	-	40
-	1	1	1	2119957-1	APPLICATOR SHIM PACK	-	39
-	1	1	1	2119644-4	RAM WASHER, PRECISION	-	38
-	8	8	8	1-18028-2	WASHER, FLAT, REG M4	-	33
-	2	2	2	2168083-9	SCR, SKT HD CAP, RoHS, M4 X 20	-	31
-	2	2	2	1-2168083-0	SCR, SKT HD CAP, RoHS, M4 X 10	-	29
-	1	1	1	690455-1	STRIPPER, FRONT CASTING	-	27
-	2	2	2	1-2168083-5	SCR, SKT HD CAP, RoHS, M4 X 30	-	25
-	1	1	1	1-1752371-6	PLATE, STRIP GUIDE	-	24
-	2	2	2	22281-8	SPRING, COMPRESSION	-	22
-	1	1	1	1803292-4	DRAG	-	20
-	1	1	1	5-1901696-2	STRIP GUIDE, REAR	-	19
-	1	1	1	5-1901695-2	STRIP GUIDE, FRONT	-	18
-	1	1	1	240641-9	SPACER	-	16
-	1	1	1	1752360-1	SPACER, HOLD-DOWN	-	13
-	1	1	1	240644-5	PLATE, REAR SHEAR	-	11
-	-	-	-	-	-	-	10
-	1	1	1	6-690482-3	PLATE, FRONT SHEAR	-	9
-	1	1	1	1803711-3	ANVIL, COMBINATION, END FEED	-	8
-	1	1	1	1-2217206-2	BLADE, SLUG	-	7
-	-	-	-	-	-	-	6
-	1	1	1	4-240641-4	SPACER	-	5
-	1	1	1	3-238011-4	BLOCK, CRIMPER SPACER	-	4
-	1	1	1	1-1803384-9	CRIMPER, INSULATION F	-	3
-	1	1	1	1-455888-5	SPACER, CRIMPER	-	2
-	1	1	1	7-1803470-4	CRIMPER, WIRE F	-	1
-	77	27	25	22	PART NO	DESCRIPTION	ITEM NO

DIMENSIONS:		TOLERANCES UNLESS OTHERWISE SPECIFIED:		DWG		CHK		APPV		NAME	
mm	0 PLC	±		FE, ZHANG	09APR2018	K, ZHANG	09APR2018	K, ZHANG	09APR2018	Ocean End Feed Applicator	
	1 PLC	±								SIZE	
	2 PLC	±								CAGE CODE	
	3 PLC	±								DRAWING NO	
	4 PLC	±								RESTRICTED TO	
	ANGLES	±								SCALE	
MATERIAL	FINISH	±								SHEET	
										3 OF 4	
										REV	
										A	

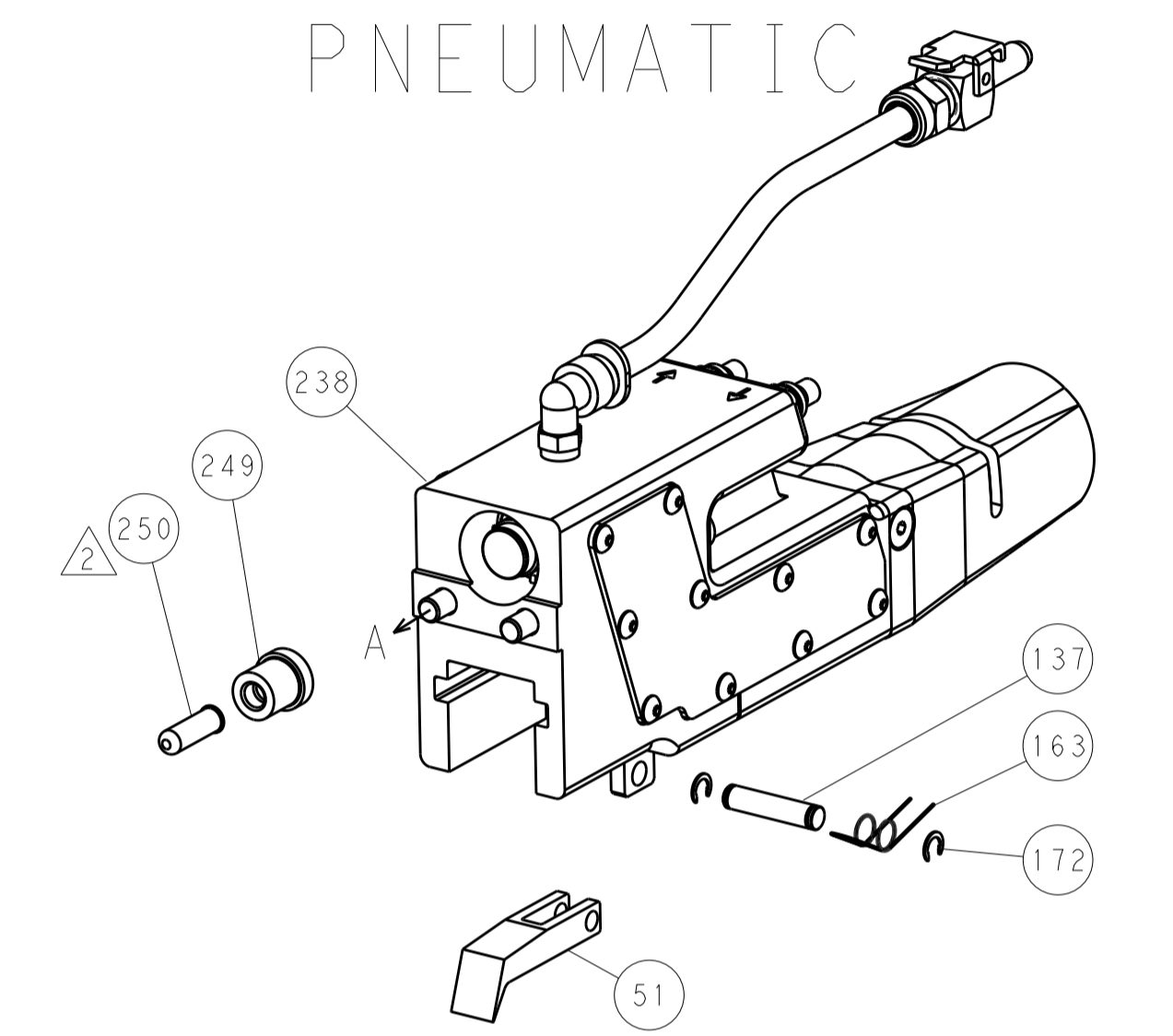
LOC		DIST		REVISIONS			
A	66	P	LTM	DESCRIPTION	DATE	DWN	APVD
		-		SEE SHEET 1			



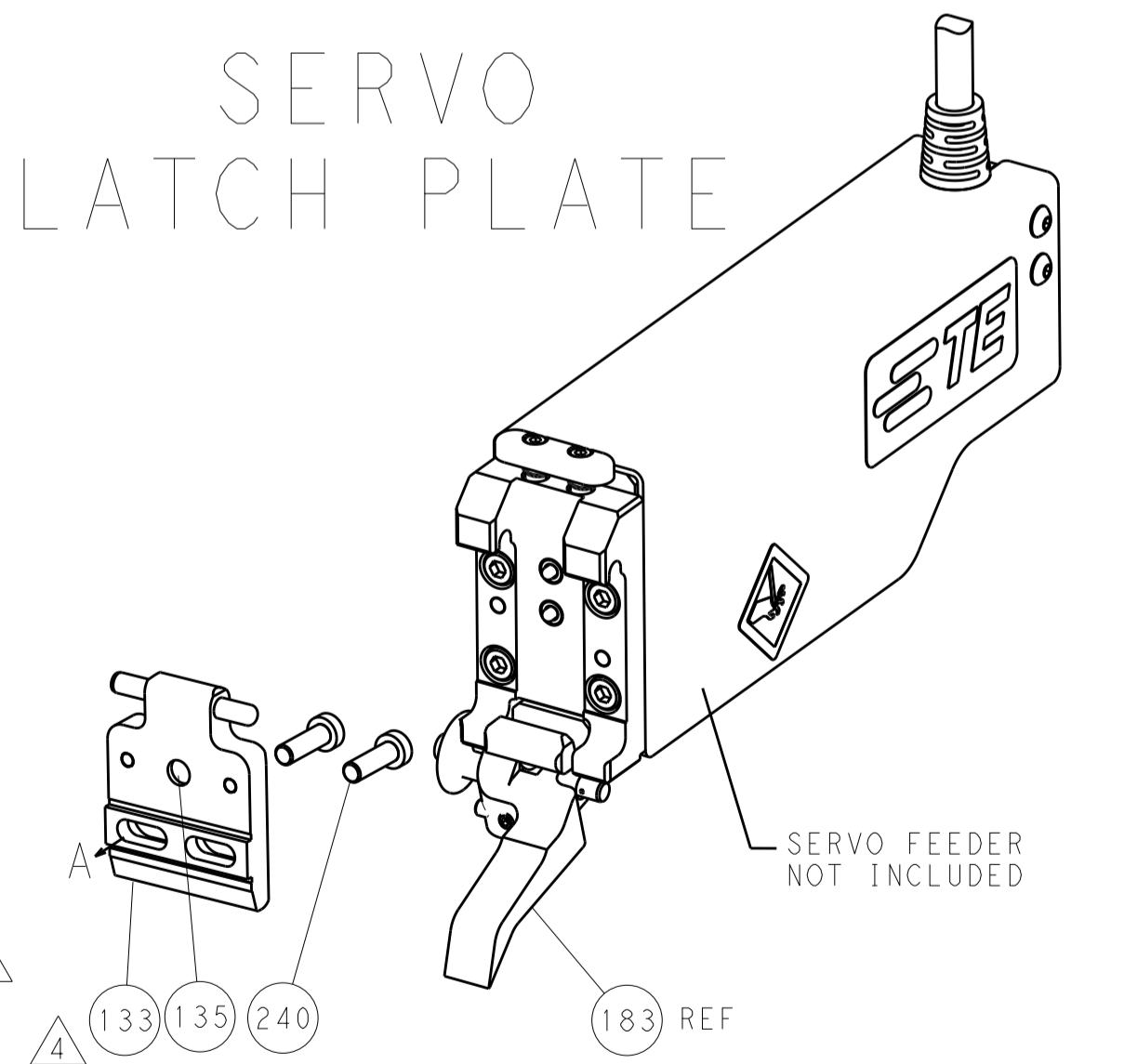
HOLDDOWN SET-UP



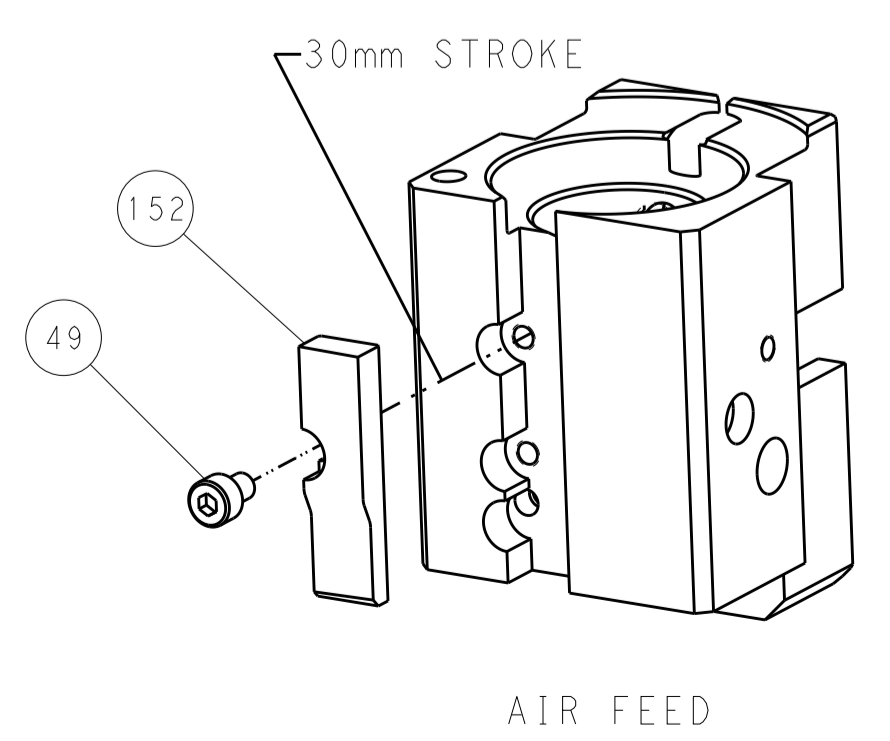
FEED TYPE
PNEUMATIC



SERVO
LATCH PLATE



CAM POSITION



AIR FEED

PACIFIC VERSION
 Shown on sheets 3 of 4 & 4 of 4
 (Atlantic version shown on sheets 1 of 4 & 2 of 4)

DIMENSIONS:		TOLERANCES UNLESS OTHERWISE SPECIFIED:		DWN F. ZHANG 09APR2018		STE TE Connectivity Harrisburg, PA 17105-3608	
mm	0 PLC	±		CHK K. ZHANG 09APR2018	NAME	SIZE	CAGE CODE
	1 PLC	±		APVD K. ZHANG 09APR2018	PRODUCT SPEC	00779	©=2150907
	2 PLC	±			APPLICATION SPEC	Customer Accessible Production Drawing	SCALE 1:1 SHEET 4 OF 4 REV A
	3 PLC	±			RESTRICTED TO		
	4 PLC	±					
	ANGLES	±					
MATERIAL	FINISH						