

PART NUMBER	REVISION	DESCRIPTION	FEED TYPE
2151022-1	N	FINE CRIMP HEIGHT ADJUST	MECHANICAL
2151022-2	N	FINE CRIMP HEIGHT ADJUST	PNEUMATIC
7-2151022-1	N	MECHANICAL AND CRIMP TOOLING KIT	MECHANICAL
7-2151022-2	N	PNEUMATIC AND CRIMP TOOLING KIT	PNEUMATIC
7-2151022-7	N	CRIMP TOOLING KIT	-

ATLANTIC VERSION TERMINATOR INTERFACE ADAPTER



APPLICATOR DATA		
CRIMP	SIZE	TYPE
WIRE	1.40 mm [.055]	F
INSUL	1.78 mm [.070]	F

APPLICATOR INSTRUCTIONS  
408-35042

TERMINAL DATA: TE TERMINAL				TE CRIMP SPECIFICATION			
TERMINAL NAME: CONTACT, RECEPTACLE, CRIMP SNAP-IN, MICRO MATE-N-LOCK							
WIRE STRIP LENGTH				INSULATION DIAMETER RANGE			
2.90-3.50 mm [.114-.138 IN]				Ø.89-1.52 mm [.035-.060 IN]			
114-13000							
TERMINALS APPLIED							
TE TERMINAL	TE TERMINAL	TE TERMINAL	TE TERMINAL	TE TERMINAL	TE TERMINAL	TE TERMINAL	TE TERMINAL
794606-1	794606-2	794606-3	2825493-1				
1-794606-1	1-794606-2	1-794606-3					

TERMINAL DATA: TE TERMINAL				TE CRIMP SPECIFICATION			
TERMINAL NAME: CONTACT, RECEPTACLE, CRIMP SNAP-IN, MICRO MATE-N-LOCK							
WIRE STRIP LENGTH				INSULATION DIAMETER RANGE			
2.90-3.50 mm [.114-.138 IN]				Ø.89-1.52 mm [.035-.060 IN]			
114-94568				114-94716			
114-94569							
TERMINALS APPLIED							
TE TERMINAL	TE TERMINAL	TE TERMINAL	TE TERMINAL	TE TERMINAL	TE TERMINAL	TE TERMINAL	TE TERMINAL
794606-1							

TERMINAL DATA: TE TERMINAL				TE CRIMP SPECIFICATION			
TERMINAL NAME: CONTACT, RECEPTACLE, CRIMP SNAP-IN, MICRO MATE-N-LOCK							
WIRE STRIP LENGTH				INSULATION DIAMETER RANGE			
2.90-3.50 mm [.114-.138 IN]				Ø.89-1.52 mm [.035-.060 IN]			
114-94641				114-94622			
114-94526				114-94527			
TERMINALS APPLIED							
TE TERMINAL	TE TERMINAL	TE TERMINAL	TE TERMINAL	TE TERMINAL	TE TERMINAL	TE TERMINAL	TE TERMINAL
794606-1							

WIRE SIZE	CRIMP HEIGHT mm [INCH]	CRIMP HEIGHT REFERENCE SETTING
20 AWG	0.89+/-0.05 [.035+/- .002]	7.8
0.5mm <sup>2</sup>	0.83+/-0.03 [.033+/- .001]	8.4
22 AWG	0.79+/-0.05 [.031+/- .002]	8.9
0.35mm <sup>2</sup>	0.79+/-0.03 [.031+/- .001]	9.0
24 AWG	0.69+/-0.05 [.027+/- .002]	9.9

WIRE SIZE	CRIMP HEIGHT mm [INCH]	CRIMP HEIGHT REFERENCE SETTING
0.50mm <sup>2</sup> FLY-A	0.82+/-0.03 [.032+/- .001]	8.5

WIRE SIZE	CRIMP HEIGHT mm [INCH]	CRIMP HEIGHT REFERENCE SETTING
0.50mm <sup>2</sup> FLY-A	0.82+/-0.03 [.032+/- .001]	8.5

- 1 RECOMMENDED SPARE PARTS
- 2 REFER TO SUPPLIED INSTRUCTION SHEET FOR CLEANING, LUBRICATION, AND STORAGE OF THE APPLICATOR
- 3 APPLY PART NUMBER 2-23419-6 LOCTITE TO THREADS OF ITEMS 242.
- 4 CRIMP HEIGHT REFERENCE SETTING WAS THE SETTING USED WHEN THE APPLICATOR WAS QUALIFIED AT THE FACTORY. ADJUSTMENT MAY BE NECESSARY WHEN RUNNING APPLICATOR IN THE FIELD.
- 5 TERMINAL LUBRICANT IS RECOMMENDED.
- 6. UNLESS SPECIFIED OTHERWISE TORQUE VALUES SHALL BE USED PER DOCUMENT, 101-35000.
- 7 SEE FINAL ASSEMBLY DETAILS TO DETERMINE CORRECT 114 SPECIFICATION FOR 0.50mm<sup>2</sup> FLY-A WIRE.

LOC	DIST	REVISIONS					
A	66	P	LTN	DESCRIPTION	DATE	OWN	APVD
		M		ECR-19-009012	08JUN2019	TB	TE
		N		ECR-21-006467	24JUN2021	JWC	GB
		N1		ECR-24-197848	18JAN2024	TB	RK
		N2		ECR-24-199100	01FEB2024	FZ	RK

1	-	1	1	1	1	2280441-1	INSERT, SHEAR	282
	-	1	-	1	-	2119641-1	FEED CAM, AIR FEED	248
	-	1	1	1	1	2119082-8	CAM, SNAIL, INSULATION ADJUSTMENT	244
	-	1	1	1	1	2079764-1	WASHER, WAVE SPRING, CREST-TO-CREST	243
3	-	1	1	1	1	2119083-1	RETAINER, INSULATION DIAL	242
	-	2	2	2	2	7-18023-7	SCR, SKT HD CAP M3 X 4.0	241
	-	1	-	1	-	2119580-1	MECHANICAL FEED ASSEMBLY	239
	-	1	-	1	-	2844940-1	AIR FEED MODULE	238
	REF	REF	REF	REF	REF	994970-2	COUNTER, MAGNETIC	164
	-	1	1	1	1	2168083-6	SCR, SKT HD CAP, RoHS, M5 X 65	124
	-	2	2	2	2	1-18028-2	WASHER, FLAT, REG M4	119
5	-	1	1	1	1	2119955-1	ASSY, LUBRICATOR, SIDE FEED	113
	-	1	1	1	1	2844908-1	SCREW, LOCKING	99
	-	1	1	1	1	2844907-1	POST, LOCKING	98
	-	1	1	1	1	1-22281-8	SPRING, COMPRESSION	96
	-	1	1	1	1	980371-4	SCR, SKT HD SHLDR 5.0 DIA X 6.0	83
	-	1	1	1	1	455888-6	SPACER, CRIMPER -	82
	-	1	1	1	1	240641-5	SPACER	81
	-	1	1	1	1	1803607-3	DOCUMENTATION PACKAGE	71
	-	4	4	4	4	18026-1	WASHER, SPRG LOCK, REG M3	68
	-	1	1	1	1	2119740-1	TAG, IDENTIFICATION	67
	-	2	2	2	2	2168078-1	SCREW, DRIVE, RH, RoHS, 2 x .188	66
	-	4	4	4	4	2168083-1	SCR, SKT HD CAP, RoHS, M3 X 8.0	65
	-	2	2	2	2	2-18032-5	SCR, SET, FLT PNT, M5 X 20.0	61
	-	1	1	1	1	2168083-2	SCR, SKT HD CAP, RoHS, M4 X 8.0	60
	-	1	1	1	1	5-18022-5	SCR, HEX HD CAP, M4 X 6.0	59
	-	1	1	1	1	1338683-1	FEED PAWL	56
	-	4	4	4	4	2168083-3	SCR, SKT HD CAP, RoHS, M4 X 12.0	54
	-	2	2	2	2	2168083-8	SCR, SKT HD CAP, RoHS, M4 X 16	53
	-	1	2	1	2	18023-9	SCR, SKT HD CAP M4 X 6.0	49
	-	1	1	1	1	2119652-1	FEED CAM, PRE FEED	48
	-	1	1	1	1	2119653-1	FEED CAM, POST FEED	47
	-	1	1	1	1	1803583-9	APPLICATOR BASIC ASSEMBLY, SF	46
	-	1	1	1	1	1803515-1	RAM ASSEMBLY, SF ATLANTIC	44
	-	1	1	1	1	1803602-1	SCR, BHSC, RoHS (M8 X 25)	41
	-	1	1	1	1	2305692-1	PLATE, REAR STRIP GUIDE	29
	-	1	1	1	1	1-455888-0	SPACER, CRIMPER -	28
	-	2	2	2	2	1-22284-0	SPRING, COMPRESSION	27
	-	1	1	1	1	356835-1	LEVER, DRAG RELEASE	26
	-	1	1	1	1	240792-1	DRAG, TERMINAL	25
	-	1	1	1	1	189124-7	GUIDE, FRONT STRIP	24
	-	1	1	1	1	690438-1	FRONT STRIP GUIDE	23
	-	1	1	1	1	2168083-2	SCR, SKT HD CAP, RoHS, M4 X 8.0	21
	-	1	1	1	1	1-18028-2	WASHER, FLAT, REG M4	20
	-	1	1	1	1	2119533-1	STRIPPER, SIDE FEED	19
	-	1	1	1	1	690518-1	HOLD DOWN, TERMINAL	18
1	-	1	1	1	1	2-690463-3	FLOATING SHEAR, REAR	17
1	-	2	2	2	2	1-2168083-1	SCR, SKT HD CAP, RoHS, M3 X 6	16
1	-	1	1	1	1	1-690691-1	PLATE, REAR SHEAR	15
1	-	1	1	1	1	2119862-1	SHEAR HOLDER, REAR	14
1	-	1	1	1	1	2119806-1	INSERT, SHEAR	13
	-	2	2	2	2	3-22280-3	SPRING, COMPRESSION	12
	-	2	2	2	2	1-356885-4	STOP, SHEAR	11
1	-	1	1	1	1	2119805-1	SHEAR HOLDER, FRONT -	10
1	-	1	1	1	1	1803095-1	FLOATING SHEAR, FRONT -	9
1	1	2	2	1	1	4-1333201-0	ANVIL, COMBINATION	8
	-	1	1	1	1	3-240641-7	SPACER	7
	-	1	1	1	1	690468-7	DEPRESSOR SHEAR, REAR	6
	-	1	1	1	1	1-2119757-9	DEPRESSOR, SHEAR	5
	-	1	1	1	1	2-238011-0	BLOCK, CRIMPER SPACER	4
1	1	2	2	1	1	1-2119582-2	CRIMPER, INSULATION F PREMIUM	3
	-	1	1	1	1	455888-6	SPACER, CRIMPER -	2
1	1	2	2	1	1	3-1803125-5	CRIMPER, WIRE	1

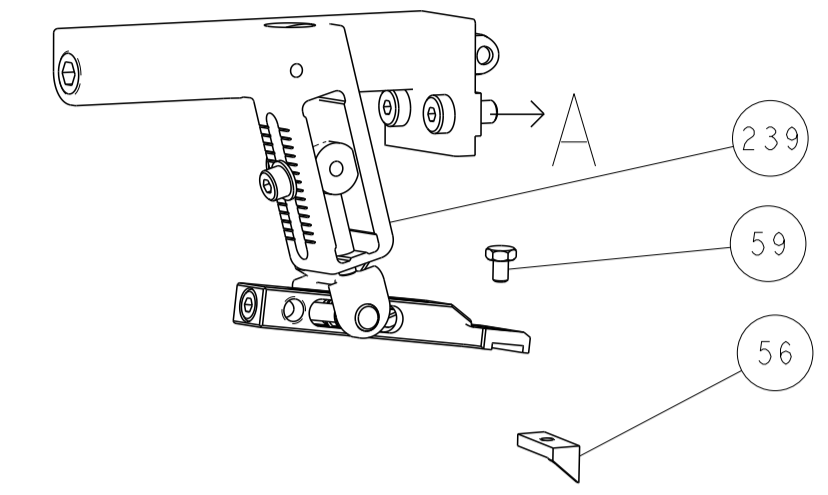
DIMENSIONS:		TOLERANCES UNLESS OTHERWISE SPECIFIED:		OWN		DATE	
mm	0 PLC ±	1 PLC ±	2 PLC ±	3 PLC ±	4 PLC ±	CHK	16NOV2011
	ANGLES ±	FINISH				CHK	16NOV2011
MATERIAL		FINISH		WEIGHT		SCALE	
				A1 00779		1:2	
Customer Accessible Production Drawing				SHEET 1 OF 4			
Customer Accessible Production Drawing				REV N2			

TE Connectivity  
Harrisburg, PA 17105-3608

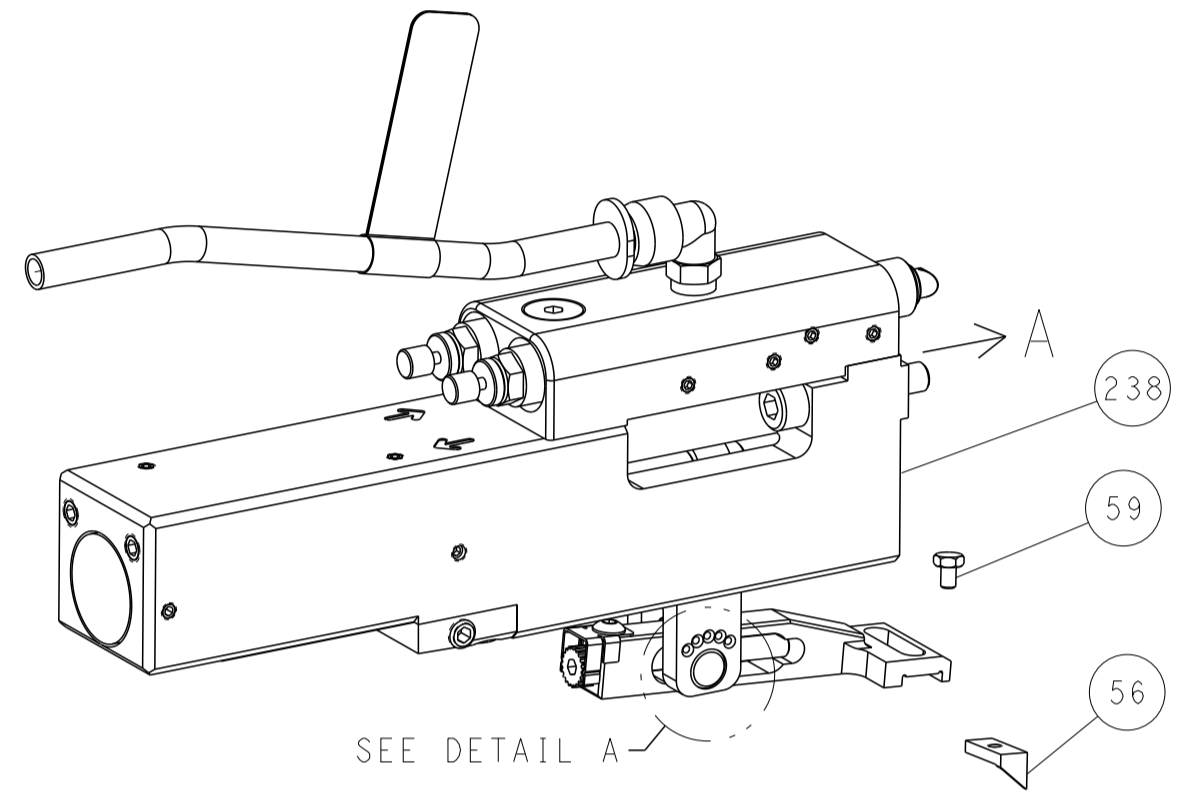
NAME: Ocean Side Feed Applicator

LOC		DIST		REVISIONS			
A	66	P	LTM	DESCRIPTION	DATE	DWN	APVD
		-	-	SEE SHEET 1	-	-	-

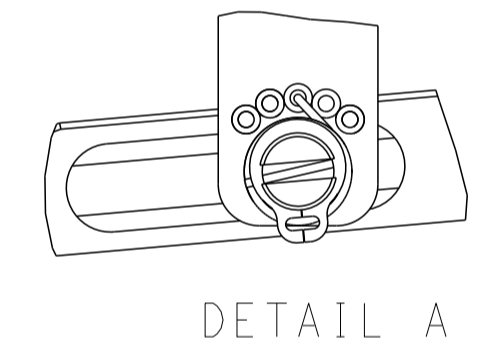
# FEED TYPE MECHANICAL



# PNEUMATIC

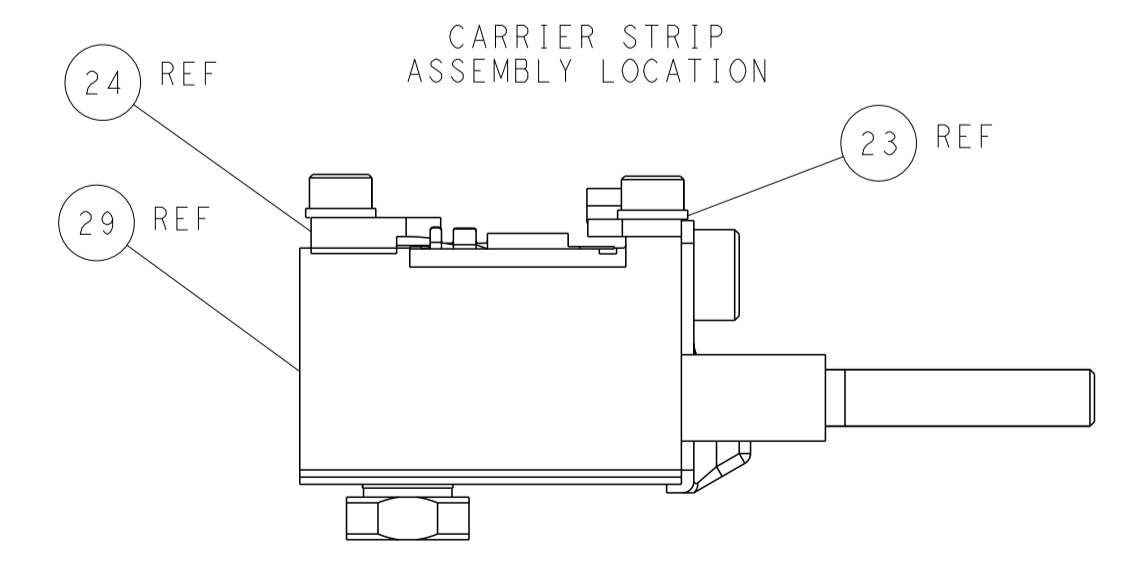
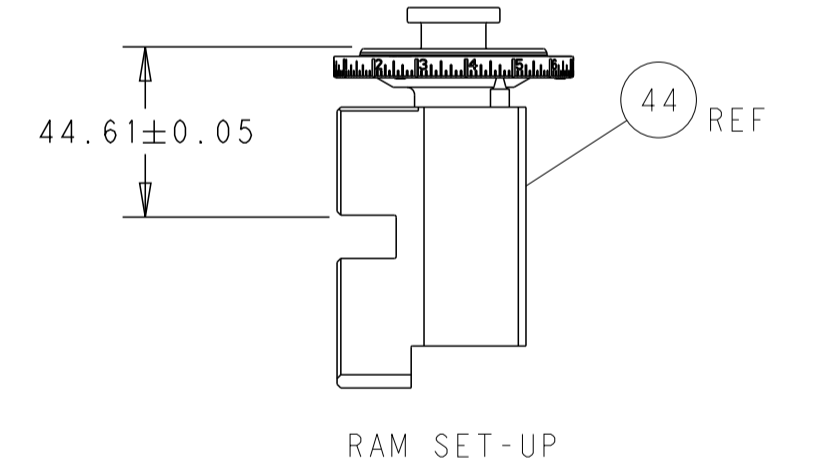
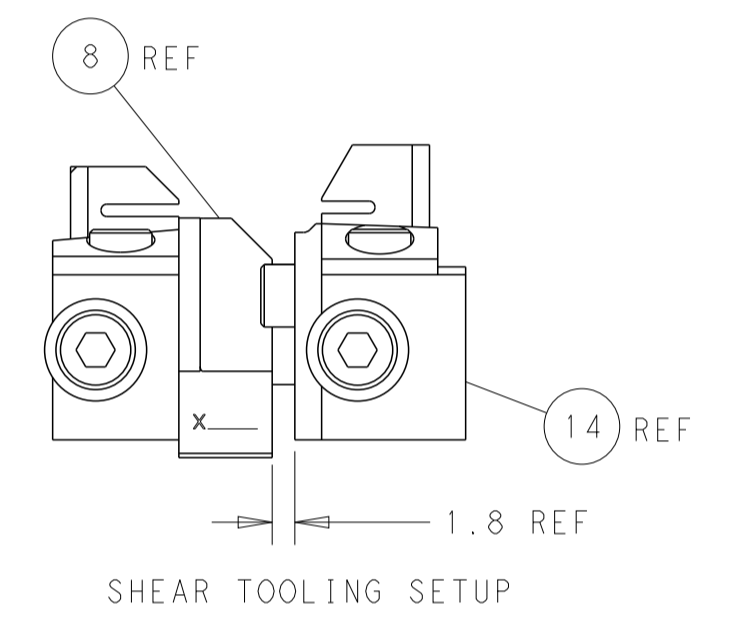
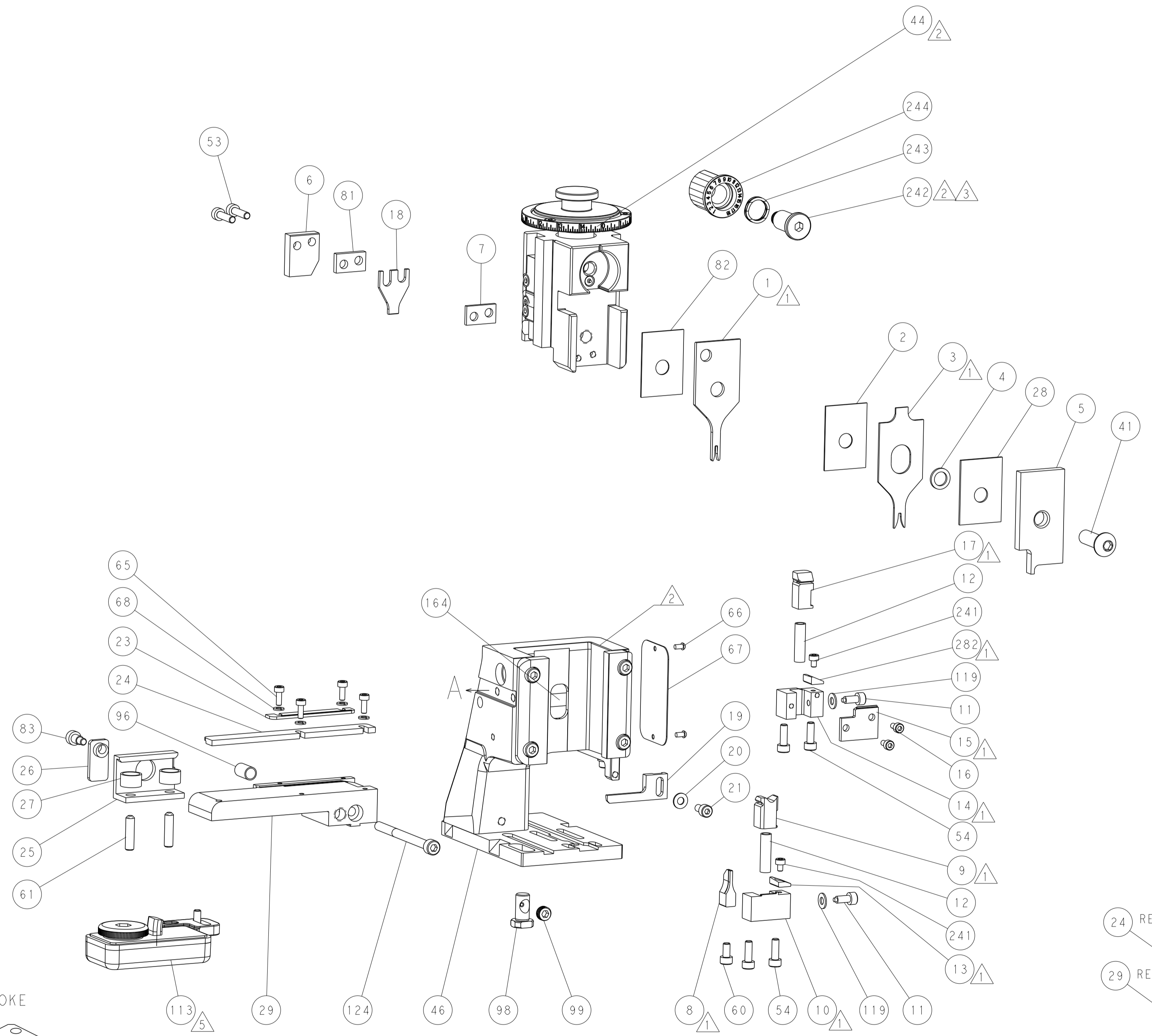
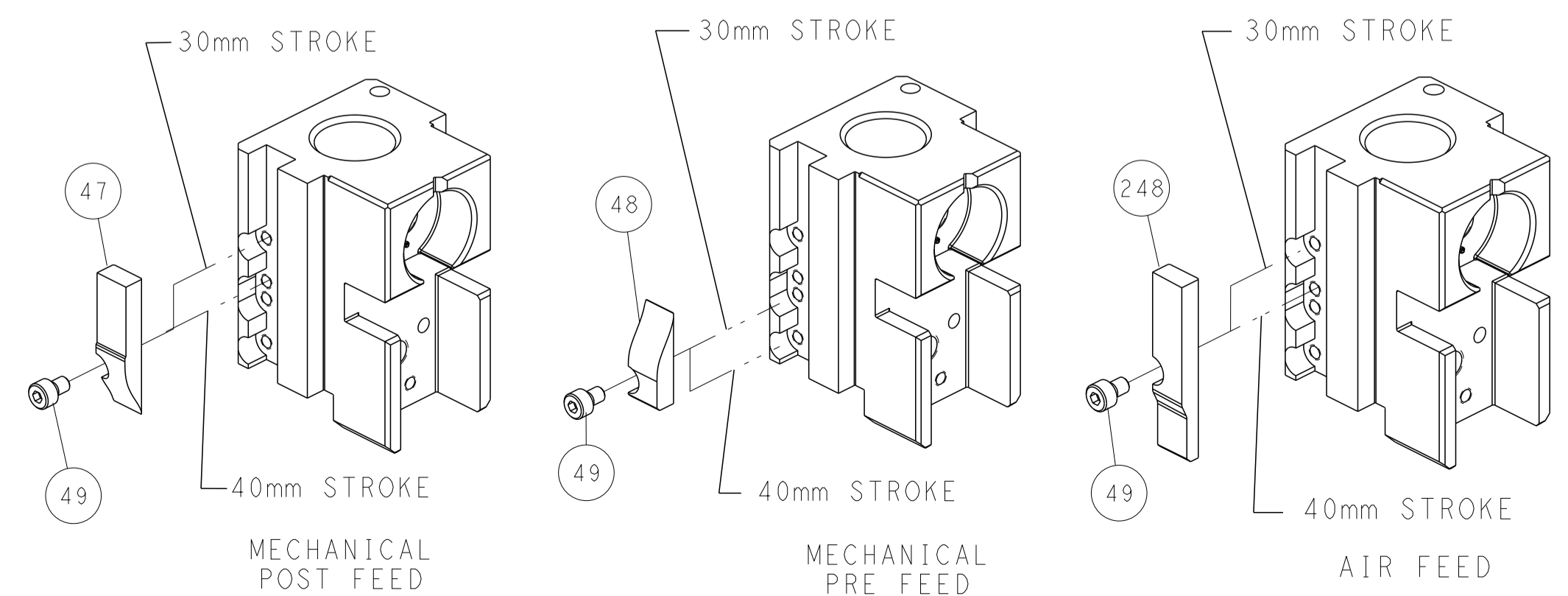


# FEED SPRING SETTING POSITION (SHOWN FROM REAR SIDE)



DETAIL A

# CAM POSITIONS



DIMENSIONS:		TOLERANCES UNLESS OTHERWISE SPECIFIED:		DWN L. ZHANG 16NOV2011		TE Connectivity Harrisburg, PA 17105-3608	
mm	0 PLC ±	1 PLC ±	2 PLC ±	3 PLC ±	4 PLC ±	NAME Ocean Side Feed Applicator	
MATERIAL:		FINISH:		APVD S. XI 16NOV2011		SIZE CAGE CODE DRAWING NO RESTRICTED TO	
				PRODUCT SPEC		A1 00779 C=2151022	
				APPLICATION SPEC		SCALE 1:2 SHEET 2 OF 4 REV N2	
				WEIGHT		Customer Accessible Production Drawing	