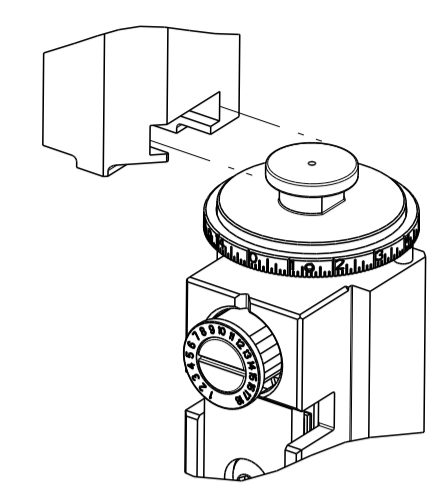


PART NUMBER	REVISION	DESCRIPTION	FEED TYPE
2151146-2	F	FINE CRIMP HEIGHT ADJUST	PNEUMATIC
7-2151146-7	A	CRIMP TOOLING KIT	-

ATLANTIC VERSION TERMINATOR  
INTERFACE ADAPTER



APPLICATOR DATA		
CRIMP	SIZE	TYPE
WIRE	4.57 mm [.180]	F
INSUL	10.92 mm [.430]	O

APPLICATOR INSTRUCTIONS  
408-35042

TERMINAL DATA: TE TERMINAL		TE CRIMP SPECIFICATION	
TERMINAL NAME: MAXI-POWER TIMER CONTACT			
WIRE STRIP LENGTH	INSULATION DIAMETER RANGE		
10.10-10.90 mm [.398-.429 IN]	Ø		
TERMINAL APPLICATION SPECIFICATION	114-18075		
TERMINALS APPLIED			
TE TERMINAL	TE TERMINAL	TE SEAL	TE SEAL
962936-1	2-962936-1	1355437-1	
			SEAL INSULATION DIAMETER RANGE Ø 4.60-5.20

WIRE SIZE	CRIMP HEIGHT mm [INCH]	CRIMP HEIGHT REFERENCE SETTING
6.00mm2	3.08+/-0.05 [.121+/- .002]	5.9
4.00mm2	2.74+/-0.05 [.108+/- .002]	5.9

- 1 RECOMMENDED SPARE PARTS
- 2 REFER TO SUPPLIED INSTRUCTION SHEET FOR CLEANING, LUBRICATION AND STORAGE OF APPLICATOR.
- 3 APPLY PART NUMBER 2-23419-6 LOCTITE TO THREADS OF ITEM 242.
- 4 CRIMP HEIGHT REFERENCE SETTING WAS THE SETTING USED WHEN THE APPLICATOR WAS QUALIFIED AT THE FACTORY. ADJUSTMENT MAY BE NECESSARY WHEN RUNNING APPLICATOR IN THE FIELD.
- 5 TERMINAL PITCH NOT COMPATIBLE WITH MECHANICAL FEED.
- 6 APPLICATOR DOES NOT CUT CARRIER STRIP.
- 7 RELOCATE ITEM 19 TO BACK OF APPLICATOR.
- 8. UNLESS SPECIFIED OTHERWISE TORQUE VALUES SHALL BE USED PER DOCUMENT, 101-35000.
- 9 APPLY TORO-SEAL IN ALLEN SOCKET TO FILL HOLE AFTER SCOKET HD HAS BEEN ADJUSTED TO CORRECT HEIGHT AT QUALIFICATION. APPLY 1-23419-5 LOC-TITE TO THREADS.

**\*WARNING**  
ON INSTALLATION, SET WIRE DISC TO CRIMP HEIGHT REFERENCE SETTING FOR LARGEST WIRE SIZE. CRIMP HEIGHT REFERENCE SETTINGS GREATER THAN THE VALUE SHOWN MAY CAUSE DAMAGE TO THE CRIMP TOOLING, REFER TO THE INSTRUCTION SHEET FOR PROPER SETUP AND ADJUSTMENTS.

LOC	DIST	REVISIONS					
A	66	P	LTN	DESCRIPTION	DATE	OWN	APVD
		C		ECR-15-014902	12OCT2015	JH	GB
		D		ECR-17-003848	17MAR2017	TB	CT
		E		ECR-20-004550	27MAR2020	FJ	GB
		F		ECR-24-207656	02MAY2024	TB	TE

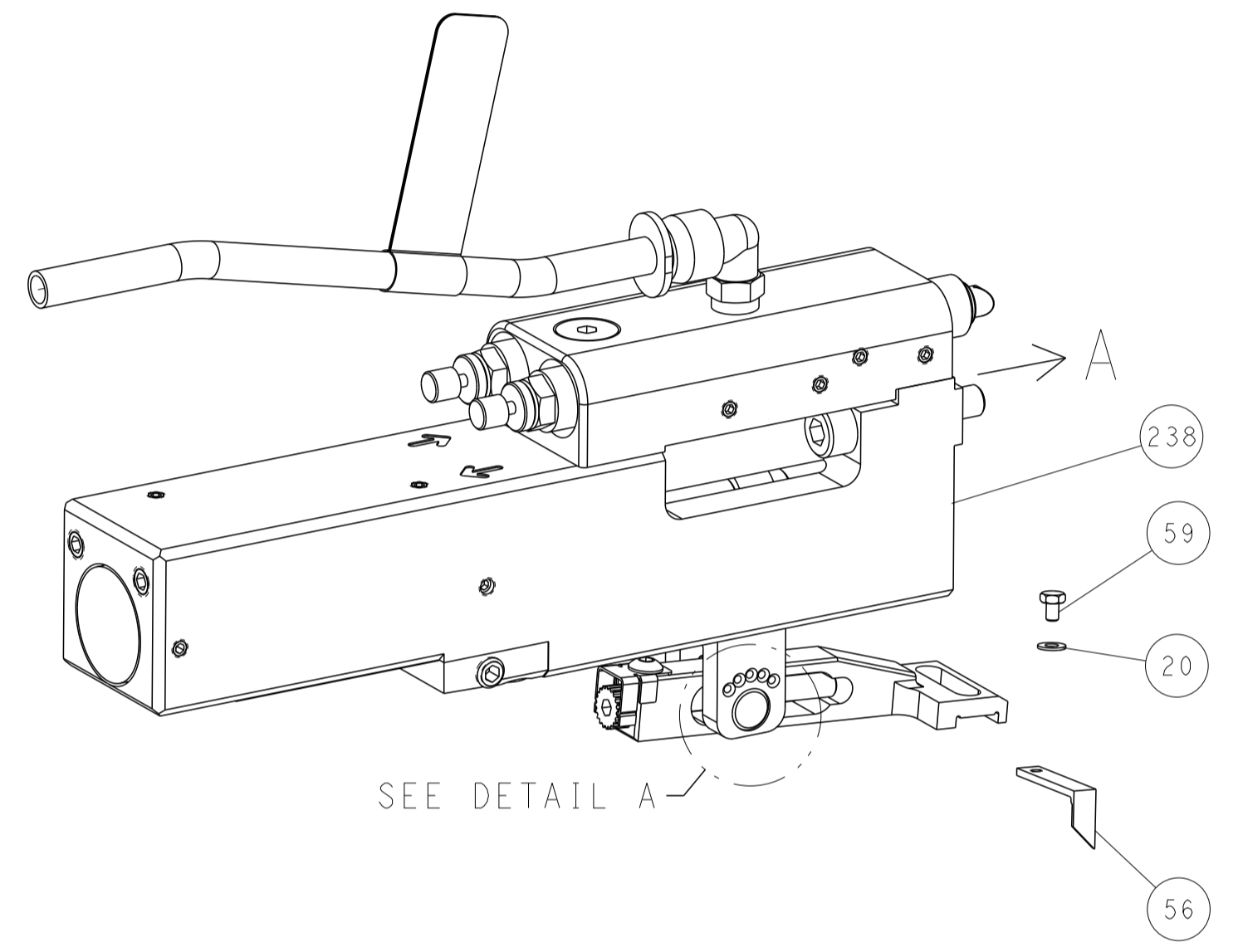
-	2	2168400-4	SHCS, LOW HEAD, RoHS, M4 X 8	272	
-	1	2119641-1	FEED CAM, AIR FEED	248	
-	1	2119082-9	CAM, SNAIL, INSULATION ADJUSTMENT	244	
-	1	2079764-1	WASHER, WAVE SPRING, CREST-TO-CREST	243	
3	-	1	2119083-1	RETAINER, INSULATION DIAL	242
-	1	2844940-6	AIR FEED MODULE	238	
-	REF	994970-2	COUNTER, MAGNETIC	164	
-	1	1-455888-4	SPACER, CRIMPER -	120	
-	1	1-18028-2	WASHER, FLAT, REG M4	119	
-	1	1-22281-8	SPRING, COMPRESSION	101	
-	1	980371-4	SCR, SKT HD SHLDR 5.0 DIA X 6.0	100	
-	1	2844908-1	SCREW, LOCKING	99	
-	1	2844907-1	POST, LOCKING	98	
-	2	2-18032-5	SCR, SET, FLT PNT, M5 X 20.0	97	
-	2	2168083-1	SCR, SKT HD CAP, RoHS, M3 X 8.0	95	
-	2	2168083-1	SCR, SKT HD CAP, RoHS, M3 X 8.0	85	
-	1	455888-3	SPACER, CRIMPER -	83	
-	1	2-455888-8	SPACER, CRIMPER -	82	
-	1	2119791-9	DEPRESSOR, WIRE	72	
-	1	1803607-3	DOCUMENTATION PACKAGE	71	
-	1	1803096-1	EXTENSION PLATE	70	
-	1	2119943-1	WASHER, SPACER	69	
-	1	2119740-1	TAG, IDENTIFICATION	67	
-	2	2168078-1	SCREW, DRIVE, RH, RoHS, 2 x .188	66	
-	1	2168083-2	SCR, SKT HD CAP, RoHS, M4 X 8.0	60	
-	1	5-18022-5	SCR, HEX HD CAP, M4 X 6.0	59	
9	-	1	1-2168083-3	SCR, SKT HD CAP, RoHS, M3 X 16	57
-	1	1-1338683-1	FEED PAWL	56	
-	2	2168083-3	SCR, SKT HD CAP, RoHS, M4 X 12.0	54	
-	2	1-2168083-0	SCR, SKT HD CAP, RoHS, M4 X 10	53	
-	1	5018030-1	NUT, HEX, REG, RoHS, M3	52	
-	1	1-811242-0	BUMPER, HOLD DOWN	51	
-	1	690753-2	SPACER, TONKER	50	
-	1	18023-9	SCR, SKT HD CAP M4 X 6.0	49	
-	1	2-1803583-6	APPLICATOR BASIC ASSEMBLY, SF	46	
-	1	1803515-2	RAM ASSEMBLY, SF ATLANTIC	44	
-	1	1803602-2	SCR, BHSC, RoHS (M8 X 40)	41	
-	1	1-1752356-2	SUPPORT, TERMINAL	34	
-	2	1-2079383-3	SCR, BHSC, RoHS (M4 X 25)	33	
-	1	2168083-6	SCR, SKT HD CAP, RoHS, M5 X 65	31	
-	2	3-2844962-5	SPACER, CYLINDRICAL, STRIP GUIDE	30	
-	1	2844938-9	PLATE, STRIP GUIDE -	29	
-	1	1-455888-0	SPACER, CRIMPER -	28	
-	2	22283-1	SPRING, COMPRESSION	27	
-	1	356835-1	LEVER, DRAG RELEASE	26	
-	1	240792-1	DRAG, TERMINAL	25	
-	1	2-1320928-2	STRIP GUIDE -	24	
-	1	2168083-2	SCR, SKT HD CAP, RoHS, M4 X 8.0	21	
-	2	1-18028-2	WASHER, FLAT, REG M4	20	
-	1	1803013-1	STRIPPER, SIDE FEED	19	
-	1	2-690438-2	FRONT STRIP GUIDE	18	
-	1	1633782-2	FENCE	14	
-	1	4-22280-7	SPRING, COMPRESSION	12	
-	1	1-356885-3	STOP, SHEAR	11	
-	1	2119805-7	SHEAR HOLDER, FRONT -	10	
-	1	1-318059-6	FLOATING SHEAR, FRONT	9	
-	1	1633930-3	ANVIL, COMBINATION	8	
-	-	-	-	7	
-	-	-	-	6	
-	1	1803080-4	DEPRESSOR, SHEAR	5	
-	1	5-238011-4	BLOCK, CRIMPER SPACER	4	
1	1	1-1633965-7	CRIMPER, INSULATION O PREMIUM	3	
-	1	1-455888-2	SPACER, CRIMPER -	2	
1	1	3-1752057-5	CRIMPER, WIRE PREMIUM, STEPPED	1	

<small>THIS IS DRAWING IS CONTROLLED DOCUMENT FROM THE INFORMATION MANAGEMENT SYSTEM. IT IS THE USER'S RESPONSIBILITY TO CONTACT THE INFORMATION MANAGEMENT SYSTEM FOR THE LATEST REVISION.</small>		DWN C. CHEN CHK S. XI APVD I. CRUZ 13JUL2011	13JUL2011 13JUL2011 13JUL2011	TE Connectivity Harrisburg, PA 17105-3608
DIMENSIONS: mm 		TOLERANCES UNLESS OTHERWISE SPECIFIED: 0 PLC ± 1 PLC ± 2 PLC ± 3 PLC ± 4 PLC ± ANGLES ± FINISH		NAME Ocean Side Feed Applicator
MATERIAL:		WEIGHT:	SIZE: A1 CAGE CODE: 00779 DRAWING NO: C=2151146	RESTRICTED TO:
AMP 4805 REV 31MAR2000		Customer Accessible Production Drawing		SCALE: 1:2 SHEET: 1 of 4 REV: F

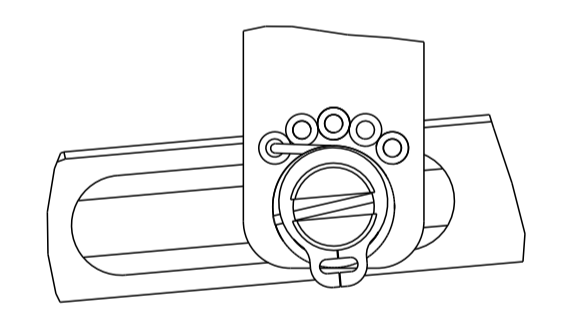
LOC	DIST	REVISIONS					
A	66	P	LTN	DESCRIPTION	DATE	DWN	APVD
-	-	-	-	SEE SHEET 1	-	-	-

# FEED TYPE

## PNEUMATIC

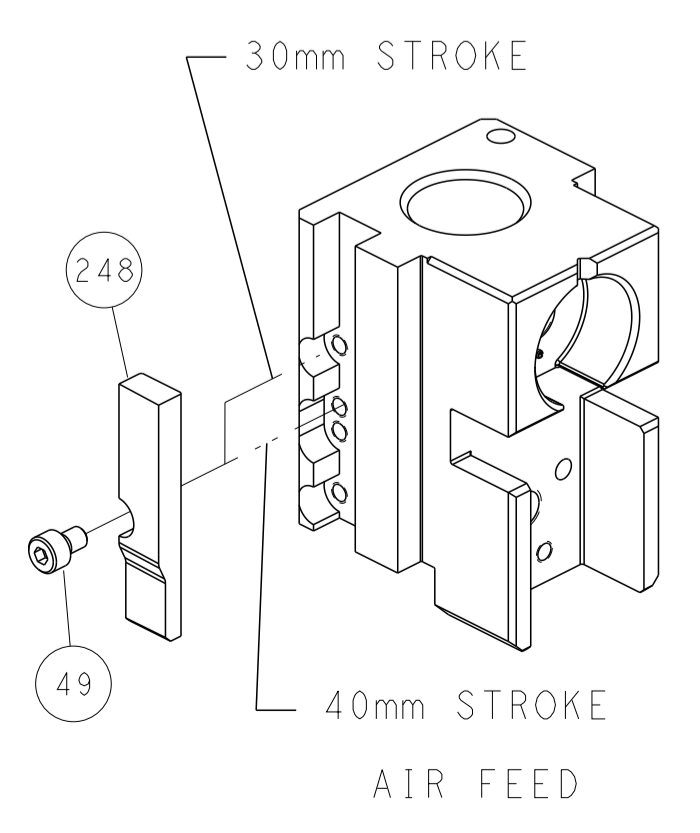


FEED SPRING SETTING POSITION  
(SHOWN FROM REAR SIDE)

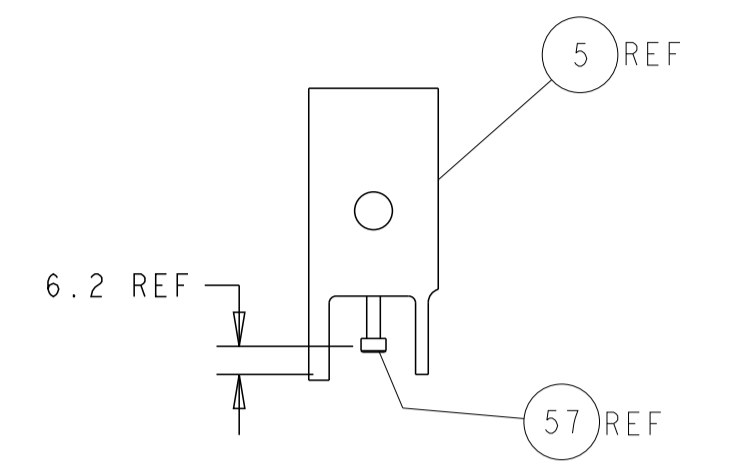
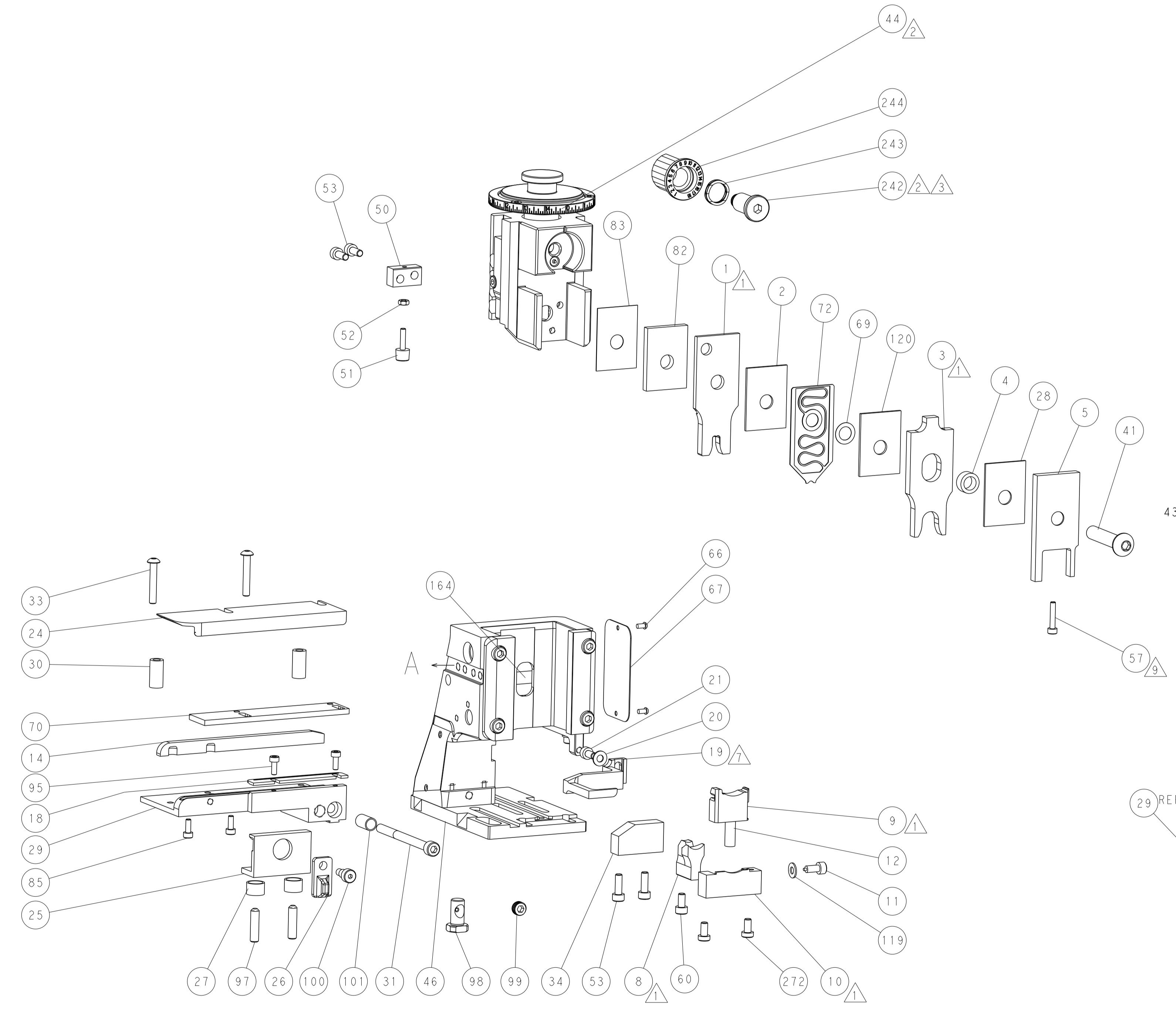


DETAIL A

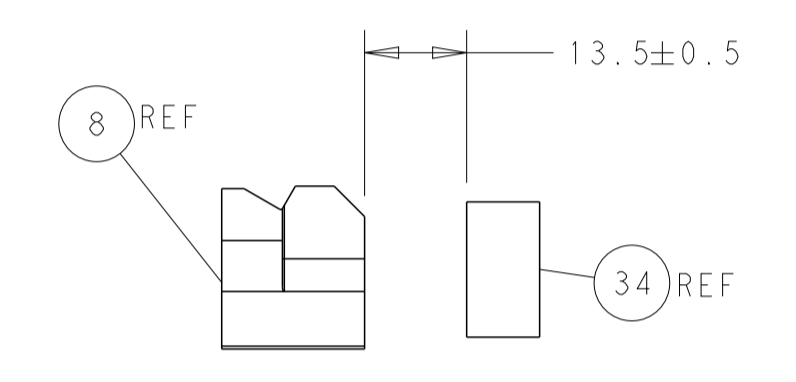
## CAM POSITION



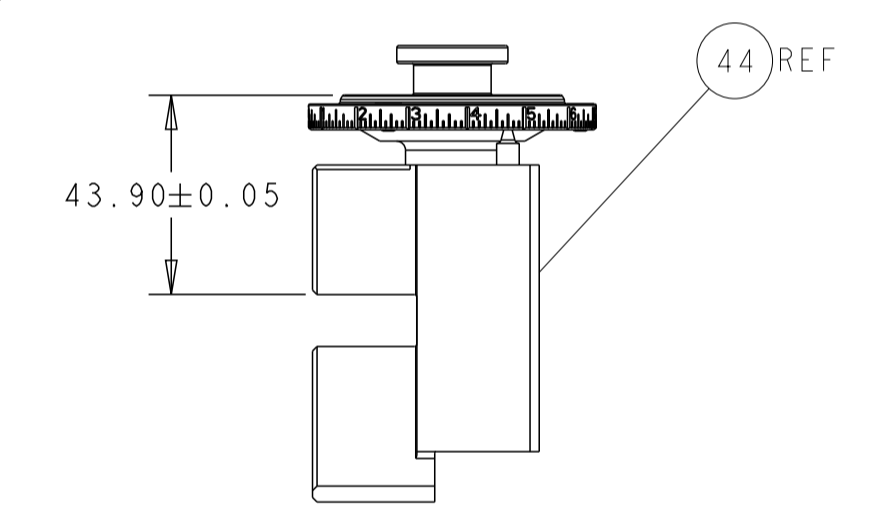
AIR FEED



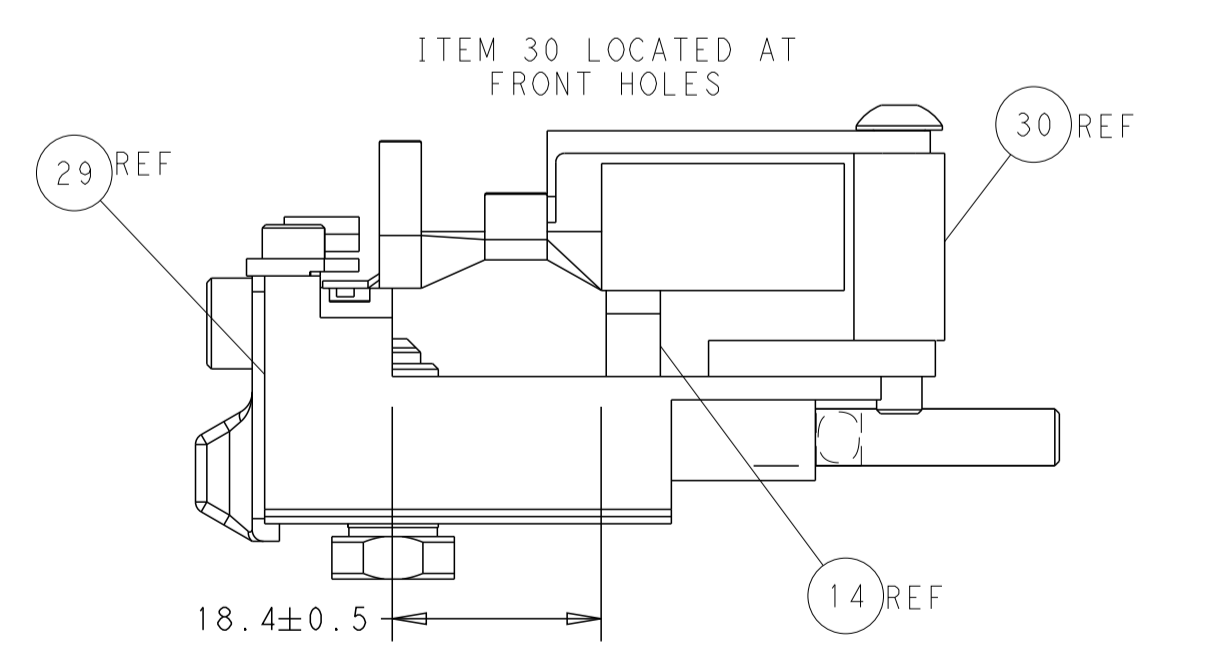
SHEAR DEPRESSOR DETAIL



TERMINAL SUPPORT LOCATION



RAM SET-UP



FEED TRACK POSITION GUIDE BY WIRE BARREL

<small>THIS DRAWING IS UNPUBLISHED. RELEASED FOR PUBLICATION. ALL RIGHTS RESERVED. © 2011 BY TYCO ELECTRONICS CORPORATION. THIS DRAWING IS CONTROLLED DOCUMENT. ANY REPRODUCTION OR DISTRIBUTION WITHOUT THE WRITTEN PERMISSION OF TYCO ELECTRONICS CORPORATION IS PROHIBITED. THIS DRAWING IS THE PROPERTY OF TYCO ELECTRONICS CORPORATION AND IS NOT TO BE REPRODUCED OR DISTRIBUTED OUTSIDE OF THE COMPANY WITHOUT THE WRITTEN PERMISSION OF TYCO ELECTRONICS CORPORATION.</small>		DWN C. CHEN 13JUL2011 CHK S. XI 13JUL2011 APVD J. CRUZ 13JUL2011	NAME Ocean Side Feed Applicator
DIMENSIONS: mm TOLERANCES UNLESS OTHERWISE SPECIFIED: 0 PLC ± 1 PLC ± 2 PLC ± 3 PLC ± 4 PLC ± ANGLES ± FINISH	SIZE A1 CAGE CODE 00779 DRAWING NO. 2151146	RESTRICTED TO Customer Accessible Production Drawing	SCALE 1:2 SHEET 2 OF 4 REV F