

PART NUMBER	REVISION	DESCRIPTION	FEED TYPE
2151274-1	H	FINE CRIMP HEIGHT ADJUST	MECHANICAL
2151274-2	H	FINE CRIMP HEIGHT ADJUST	PNEUMATIC
3-2151274-2	H	FINE CRIMP HEIGHT ADJUST	DOUBLE ACTING PNEUMATIC WITH SENSORS ⁶
7-2151274-7	A	CRIMP TOOLING KIT	-

ATLANTIC VERSION TERMINATOR INTERFACE ADAPTER



APPLICATOR DATA		
CRIMP	SIZE	TYPE
WIRE	2.54 mm [.100]	F
INSUL	3.30 mm [.130]	O

APPLICATOR INSTRUCTIONS 408-35042

TERMINAL DATA: TE TERMINAL		TE CRIMP SPECIFICATION	
TERMINAL NAME: TAB 2.8 X 0.8			
WIRE STRIP LENGTH		INSULATION DIAMETER RANGE	
4.70-5.30 mm [.185-.209 IN]		Ø1.90-2.90 mm [.075-.114 IN]	
TERMINAL APPLICATION SPECIFICATION		114-18051	-
TERMINALS APPLIED ⁷			
TE TERMINAL	TE TERMINAL	TE TERMINAL	TE TERMINAL
1-962842-3	2-962842-1	2-962842-2	2-962842-3
8-962842-1			

TERMINAL DATA: TE TERMINAL		TE CRIMP SPECIFICATION	
TERMINAL NAME: TAB 2.8 X 0.8			
WIRE STRIP LENGTH		INSULATION DIAMETER RANGE	
4.70-5.30 mm [.185-.209 IN]		Ø1.90-2.90 mm [.075-.114 IN]	
TERMINAL APPLICATION SPECIFICATION		114-18051	-
TERMINALS APPLIED ⁷			
TE TERMINAL	TE TERMINAL	TE TERMINAL	TE TERMINAL
1-962842-1	1-962842-2		

WIRE SIZE	CRIMP HEIGHT mm [INCH]	CRIMP HEIGHT REFERENCE SETTING
2.50mm2	1.88+/-0.05 [.074+/- .002]	6.7
2.00mm2	1.73+/-0.05 [.068+/- .002]	8.3
1.50mm2	1.58+/-0.05 [.062+/- .002]	9.9

WIRE SIZE	CRIMP HEIGHT mm [INCH]	CRIMP HEIGHT REFERENCE SETTING
2.50mm2	1.81+/-0.05 [.071+/- .002]	7.4
1.50mm2	1.53+/-0.05 [.060+/- .002]	10.4

- RECOMMENDED SPARE PARTS
- ² REFER TO SUPPLIED INSTRUCTION SHEET FOR CLEANING, LUBRICATION AND STORAGE OF APPLICATOR.
- ³ APPLY PART NUMBER 2-23419-6 LOCTITE TO THREADS OF ITEM 242.
- ⁴ CRIMP HEIGHT REFERENCE SETTING WAS THE SETTING USED WHEN THE APPLICATOR WAS QUALIFIED AT THE FACTORY. ADJUSTMENT MAY BE NECESSARY WHEN RUNNING APPLICATOR IN THE FIELD.
- 5. UNLESS SPECIFIED OTHERWISE TORQUE VALUES SHALL BE USED PER DOCUMENT, 101-35000.
- ⁶ THIS APPLICATOR IS EQUIPPED WITH THE DOUBLE ACTING FEED WITH SENSORS AND IS APPLICATION SPECIFIC. IT DOES NOT REQUIRE ITEMS 49 & 248.
- ⁷ TERMINAL LUBRICANT IS RECOMMENDED.

***WARNING**
ON INSTALLATION, SET WIRE DISC TO CRIMP HEIGHT REFERENCE SETTING FOR LARGEST WIRE SIZE. CRIMP HEIGHT REFERENCE SETTINGS GREATER THAN THE VALUE SHOWN MAY CAUSE DAMAGE TO THE CRIMP TOOLING. REFER TO THE INSTRUCTION SHEET FOR PROPER SETUP AND ADJUSTMENTS.

LOC	DIST	REVISIONS					
A	66	P	LTN	DESCRIPTION	DATE	OWN	APVD
		F		ECR-22-158721	17NOV2022	TB	GWB
		G		ECR-22-159012	21NOV2022	TB	GWB
		G1		ECR-24-208067	08MAY2024	ZZ	TE
		H		ECR-24-209602	22MAY2024	TB	RR

-	1	1	1	2-1803945-2	TONKER -		300
-	1	-	-	2844950-1	AIR FEED MODULE		290
-	1	1	1	22278-9	SPRING, COMPRESSION		289
-	2	2	2	4-18032-3	SCR, SET, FLT PNT, M3 X 6.0		288
-	1	1	1	1803944-1	SPACER, TONKER		287
⁶	-	-	-	2119641-1	FEED CAM, AIR FEED		248
-	1	1	1	2119082-8	CAM, SNAIL, INSULATION ADJUSTMENT		244
³	-	1	1	2079764-1	WASHER, WAVE SPRING, CREST-TO-CREST		243
-	1	1	1	2119083-1	RETAINER, INSULATION DIAL		242
-	1	1	1	18023-1	SCR, SKT HD CAP M3 X 5.0		241
-	-	-	-	2119580-1	MECHANICAL FEED ASSEMBLY		239
-	-	1	-	2844940-1	AIR FEED MODULE		238
-	REF	REF	REF	994970-2	COUNTER, MAGNETIC		164
-	1	1	1	1-18028-2	WASHER, FLAT, REG M4		119
⁷	-	1	1	2119955-1	ASSY, LUBRICATOR, SIDE FEED		113
-	1	1	1	2844908-1	SCREW, LOCKING		99
-	1	1	1	2844907-1	POST, LOCKING		98
-	1	1	1	455888-4	SPACER, CRIMPER -		82
-	1	1	1	455888-2	SPACER, CRIMPER -		75
-	1	1	1	1803607-3	DOCUMENTATION PACKAGE		71
-	1	1	1	2119791-9	DEPRESSOR, WIRE		70
-	1	1	1	2119943-1	WASHER, SPACER		69
-	1	1	1	2119740-1	TAG IDENTIFICATION		67
-	2	2	2	2168078-1	SCREW, DRIVE, RH, RoHS, 2 x .188		66
-	1	1	1	2168083-2	SCR, SKT HD CAP, RoHS, M4 X 8.0		60
-	1	1	1	5-18022-5	SCR, HEX HD CAP, M4 X 6.0		59
-	1	1	1	1338685-1	PAWL, FEED		56
-	4	4	4	2168083-3	SCR, SKT HD CAP, RoHS, M4 X 12.0		54
-	2	2	2	2168083-3	SCR, SKT HD CAP, RoHS, M4 X 12.0		53
⁶	-	-	1	18023-9	SCR, SKT HD CAP M4 X 6.0		49
-	-	-	-	2119652-1	FEED CAM, PRE FEED		48
-	-	-	-	2119653-1	FEED CAM, POST FEED		47
-	1	1	1	1803583-9	APPLICATOR BASIC ASSEMBLY, SF		46
-	1	1	1	1803515-1	RAM ASSEMBLY, SF ATLANTIC		44
-	1	1	1	1803602-1	SCR, BHSC, RoHS (M8 X 25)		41
-	1	1	1	1-1752356-7	SUPPORT, TERMINAL		34
-	2	2	2	2079383-5	SCR, BHSC, RoHS (M4 X 20)		33
-	2	2	2	3-2844962-0	SPACER, CYLINDRICAL, STRIP GUIDE		30
-	1	1	1	2844992-2	ASSEMBLY, STRIP GUIDE -		29
-	1	1	1	2-455888-2	SPACER, CRIMPER -		28
-	1	1	1	1320928-6	STRIP GUIDE -		24
-	1	1	1	2168083-2	SCR, SKT HD CAP, RoHS, M4 X 8.0		21
-	1	1	1	1-18028-2	WASHER, FLAT, REG M4		20
-	1	1	1	2119533-1	STRIPPER, SIDE FEED		19
⁷	-	1	1	2119806-1	INSERT, SHEAR		13
-	1	1	1	3-22280-3	SPRING, COMPRESSION		12
-	1	1	1	1-356885-4	STOP, SHEAR		11
⁷	-	1	1	2119805-1	SHEAR HOLDER, FRONT -		10
⁷	-	1	1	454276-5	FLOATING SHEAR, FRONT		9
⁷	1	1	1	1-1333206-7	ANVIL, COMBINATION .100		8
-	-	-	-	-	-		7
-	-	-	-	-	-		6
-	1	1	1	2119757-8	DEPRESSOR, SHEAR		5
-	1	1	1	3-238011-8	BLOCK, CRIMPER SPACER		4
⁷	1	1	1	3-2119784-7	CRIMPER, INSULATION O PREMIUM		3
-	1	1	1	455888-4	SPACER, CRIMPER -		2
⁷	1	1	1	456407-5	CRIMPER, WIRE PREMIUM		1

DIMENSIONS:		TOLERANCES UNLESS OTHERWISE SPECIFIED:		MATERIAL:		FINISH:	
mm	0 PLC ±	1 PLC ±	2 PLC ±	3 PLC ±	4 PLC ±	ANGLES ±	FINISH ±

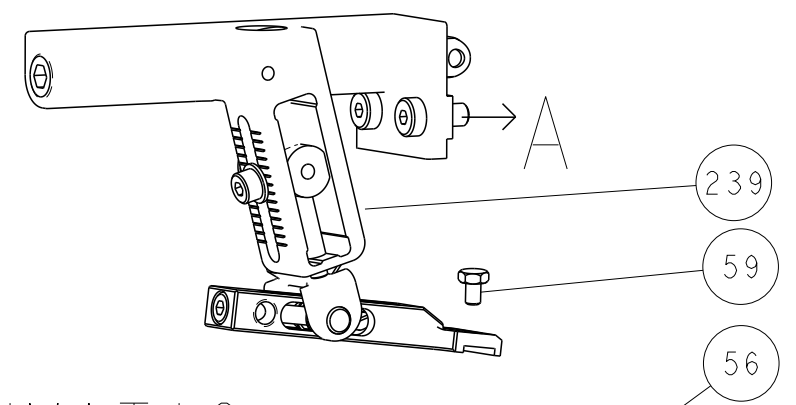
ITEM NO	PART NO	DESCRIPTION				
-77	-32	-2	-1	PART NO	DESCRIPTION	ITEM NO

OWN	X. ZHAO	08NOV2011
CHK	T. ELBIN	08NOV2011
APVD	S. XI	08NOV2011

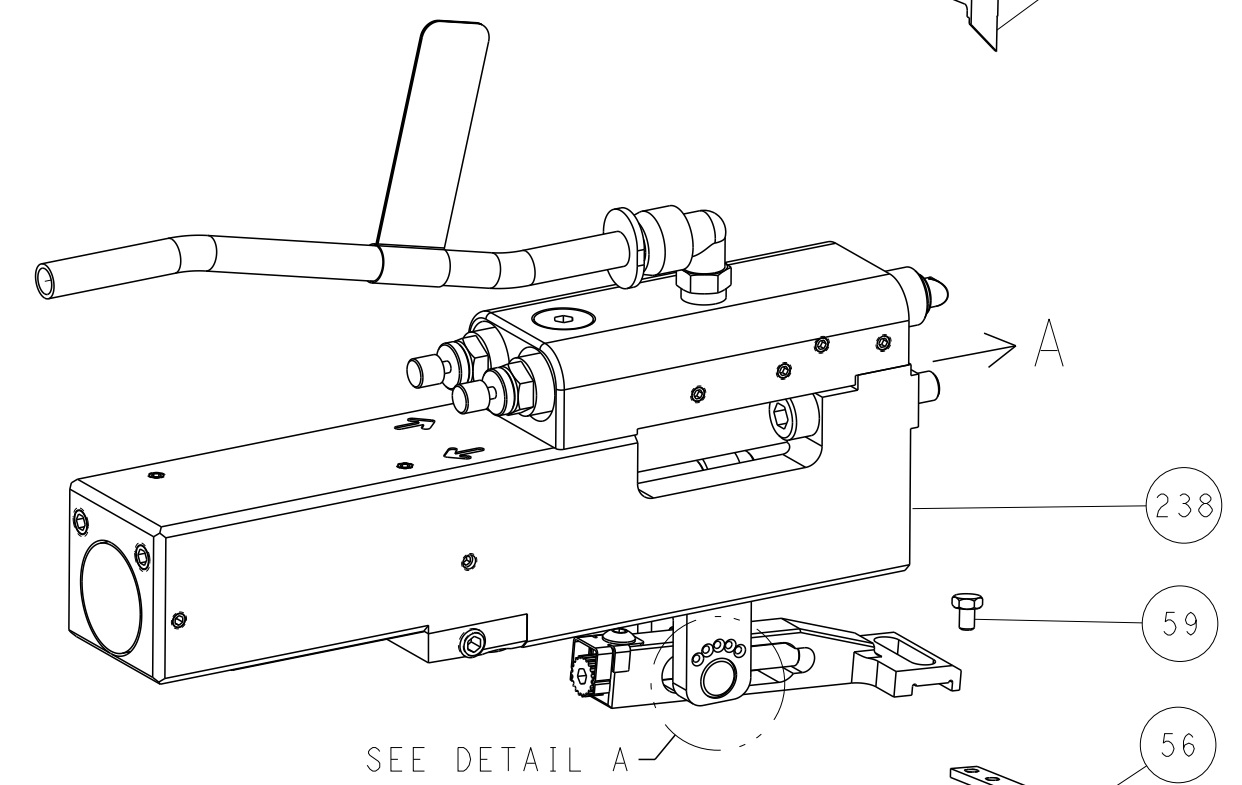
Customer Accessible Production Drawing SCALE 1:2 SHEET 1 OF 4 REV H

LOC	DIST	REVISIONS					
A	66	P	LTN	DESCRIPTION	DATE	OWN	APVD
		-		SEE SHEET 1			

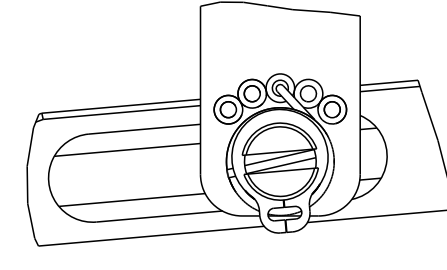
FEED TYPE MECHANICAL



PNEUMATIC

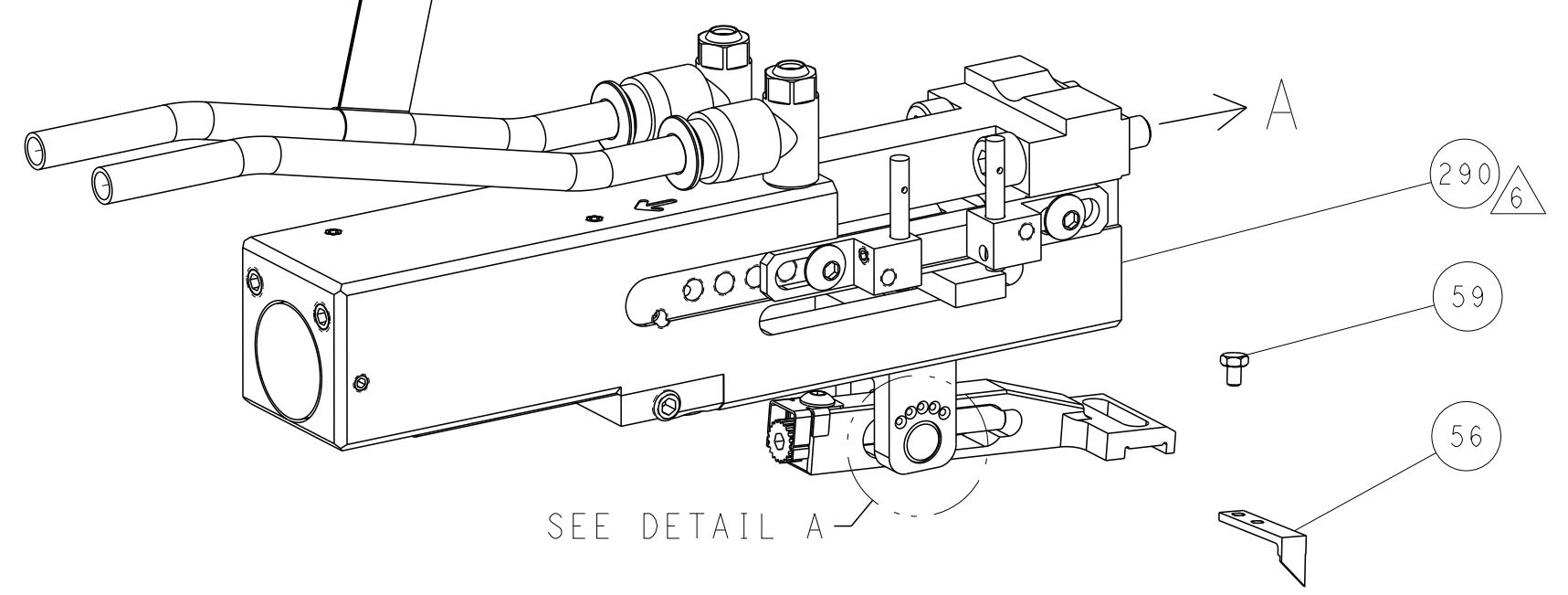


FEED SPRING SETTING POSITION (SHOWN FROM REAR SIDE)



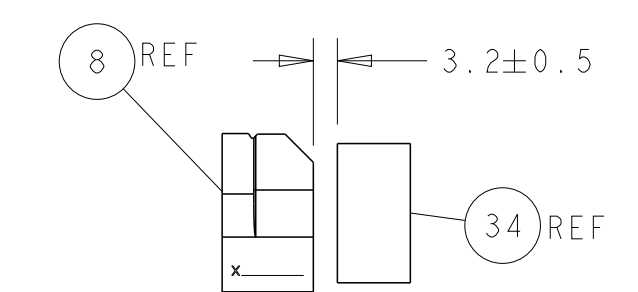
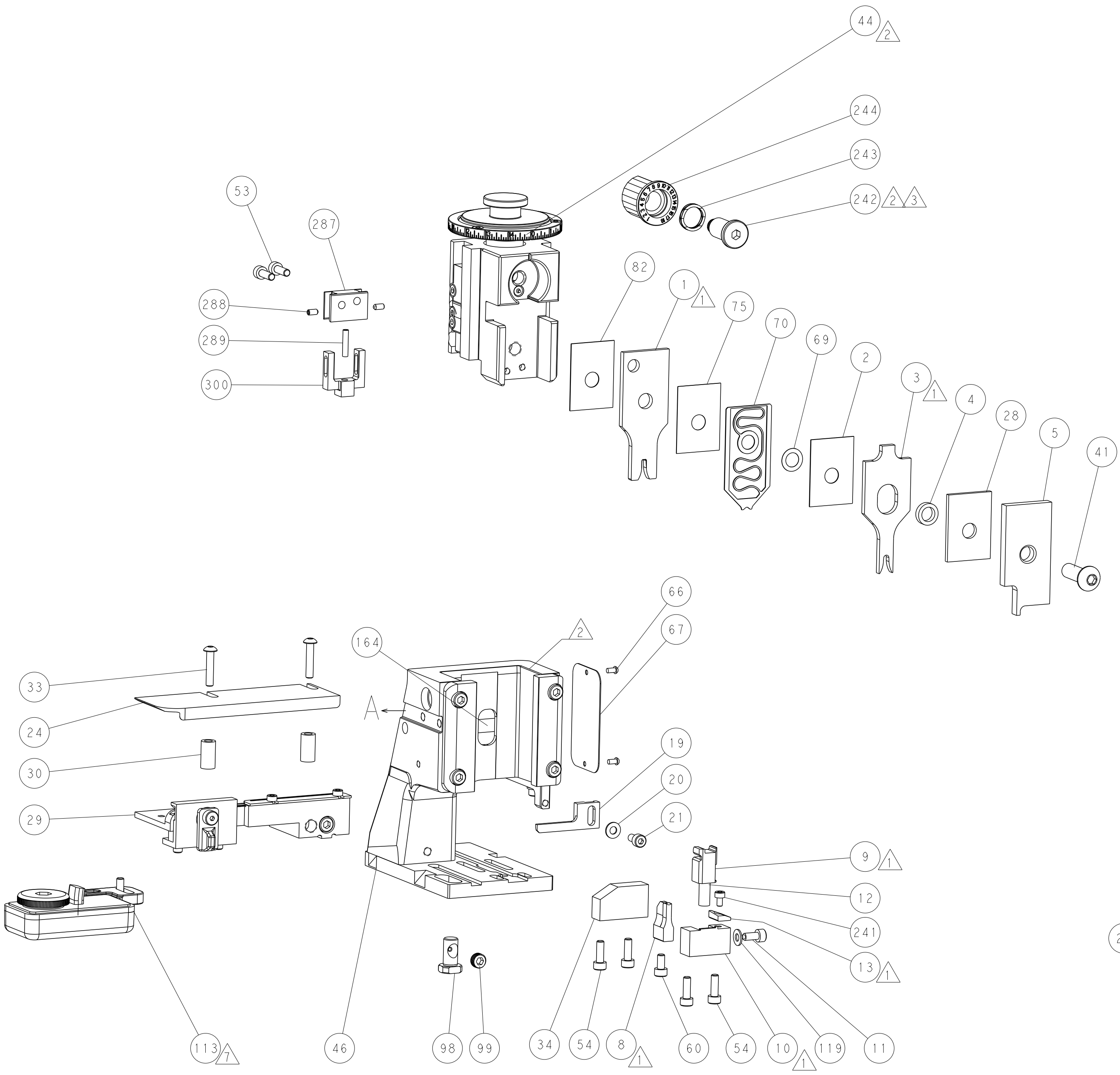
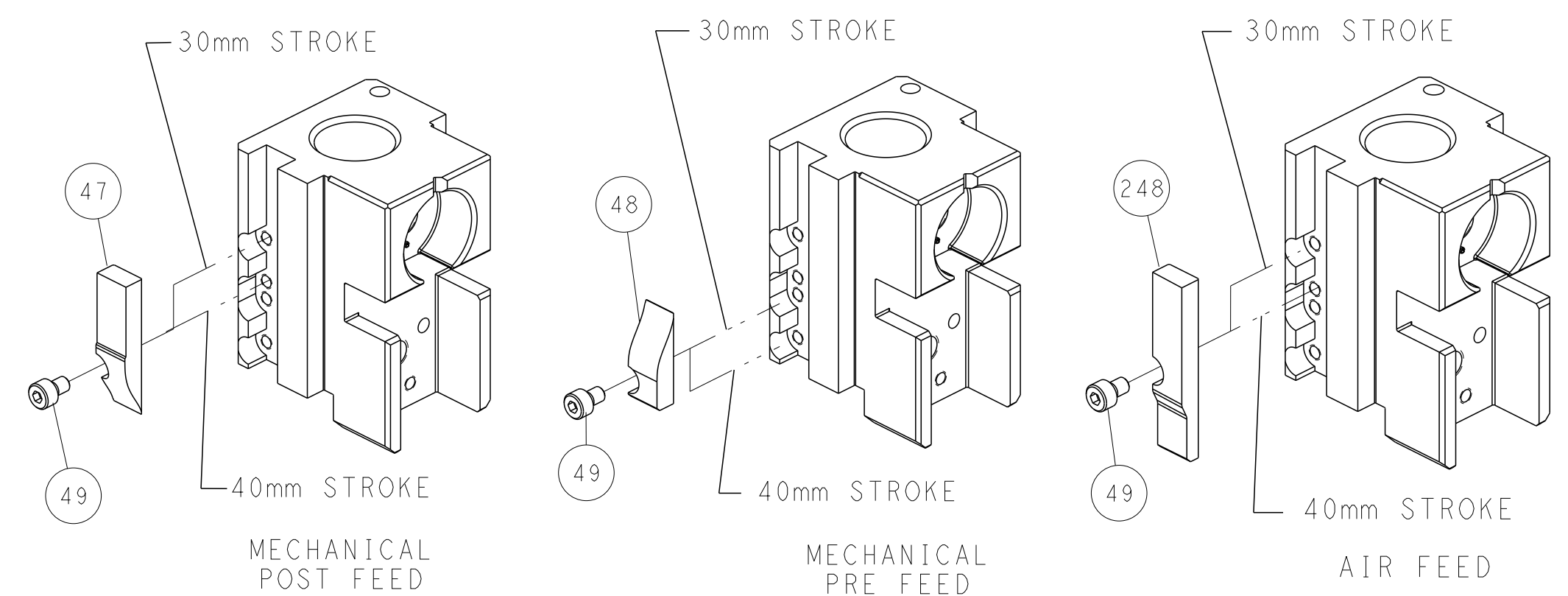
DETAIL A

DOUBLE ACTING PNEUMATIC WITH SENSORS

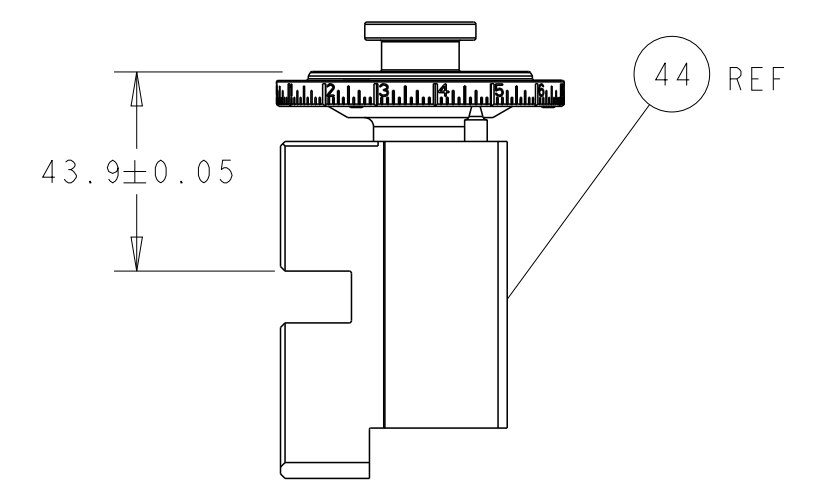


SEE DETAIL A

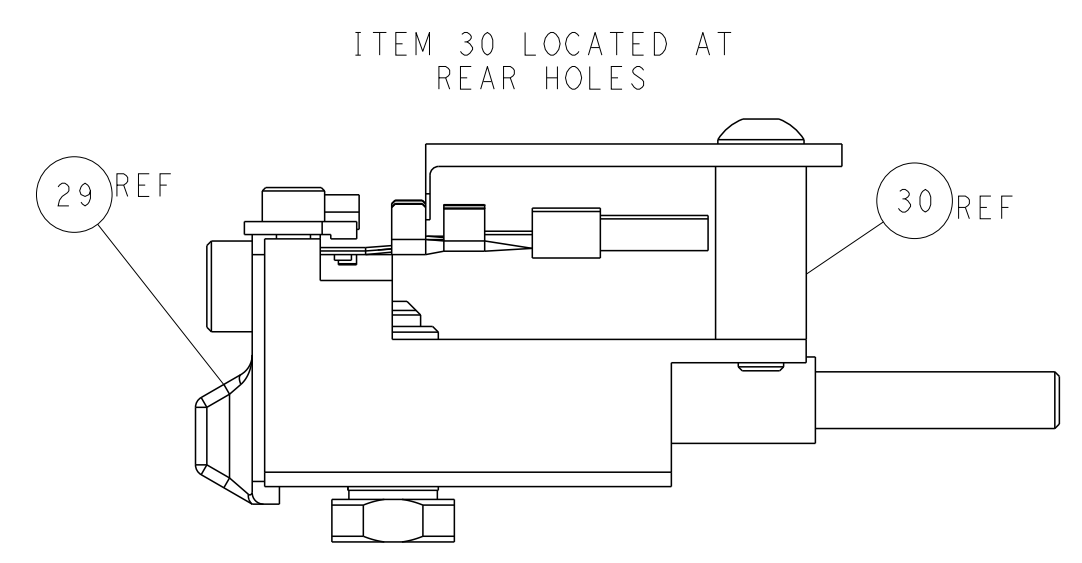
CAM POSITIONS



TERMINAL SUPPORT LOCATION



RAM SET-UP



FEED TRACK POSITION GUIDE BY INSULATION BARREL

DIMENSIONS: mm 		TOLERANCES UNLESS OTHERWISE SPECIFIED: 0 PLC ± 1 PLC ± 2 PLC ± 3 PLC ± 4 PLC ± ANGLES ± FINISH ±		DWN X.ZHAO 08NOV2011 CHK T.ELBIN 08NOV2011 APVD S.XI 08NOV2011 PRODUCT SPEC APPLICATION SPEC WEIGHT Customer Accessible Production Drawing		NAME Ocean Side Feed Applicator SIZE CAGE CODE DRAWING NO. A1 00779 C=2151274 SCALE 1:2 SHEET 2 OF 4 REV H	
MATERIAL: - FINISH: -				TE Connectivity Harrisburg, PA 17105-3608		RESTRICTED TO	