

| PART NUMBER | REVISION | DESCRIPTION | FEED TYPE |
|-------------|----------|--|------------|
| 2151345-1 | J | FINE CRIMP HEIGHT ADJUST | MECHANICAL |
| 2151345-2 | J | FINE CRIMP HEIGHT ADJUST | PNEUMATIC |
| 5-2151345-1 | J | SEAL STRIPPER CRIMPER TERMINATING UNIT | MECHANICAL |
| 5-2151345-2 | J | SEAL STRIPPER CRIMPER TERMINATING UNIT | PNEUMATIC |
| 7-2151345-7 | H | CRIMP TOOLING KIT | - |

ATLANTIC VERSION TERMINATOR INTERFACE ADAPTER

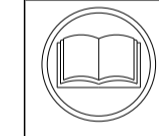


| APPLICATOR DATA | | |
|-----------------|----------------|------|
| CRIMP | SIZE | TYPE |
| WIRE | 2.54 mm [.100] | F |
| INSUL | 4.30 mm [.170] | O |

APPLICATOR INSTRUCTIONS
408-35042

| TERMINAL DATA: TE TERMINAL | | TE CRIMP SPECIFICATION | |
|--------------------------------------|----------------|---------------------------|--------------|
| TERMINAL NAME: 1.50mm CONTACT SOCKET | | | |
| WIRE STRIP LENGTH | | INSULATION DIAMETER RANGE | |
| 5.20-5.80 mm [1.205-.228 IN] | | Ø | |
| TERMINAL APPLICATION SPECIFICATION | (A)114-18020 | △8 | - |
| | (B)114-18040 | △8 | - |
| TERMINALS APPLIED △9 | | | |
| TE TERMINAL | TE TERMINAL | TE SEAL | TE SEAL |
| (A) 929968-1 | (B) 929990-1 | | (A) 828921-1 |
| (A) 929968-7 | (B) 929990-3 | | (A) 828921-2 |
| (A) 929975-1 | (B) 929990-4 | | (B) 828904-1 |
| (A) 929975-4 | (B) 929990-7 | | (B) 828904-2 |
| (A) 929975-7 | (B) 1-929990-0 | | (B) 828904-3 |
| (A) 929975-8 | (B) 1703014-1 | | (B) 828905-1 |
| (B) 1703050-1 | (B) 1703014-4 | | |
| (B) 1-1719188-0 | | | |

| WIRE SIZE | CRIMP HEIGHT mm [INCH] | CRIMP HEIGHT REFERENCE SETTING |
|-----------|----------------------------|--------------------------------|
| 2.50mm2 | 1.97+/-0.03 [.078+/-0.001] | 5.1 |
| 2.00mm2 | 1.82+/-0.03 [.072+/-0.001] | 6.8 |
| 1.50mm2 | 1.67+/-0.03 [.066+/-0.001] | 8.5 |
| 16 AWG | 1.58+/-0.03 [.062+/-0.001] | 9.6 |



- △1 RECOMMENDED SPARE PARTS
- △2 REFER TO SUPPLIED INSTRUCTION SHEET FOR CLEANING, LUBRICATION AND STORAGE OF APPLICATOR.
- △3 APPLY PART NUMBER 2-23419-6 LOCTITE TO THREADS OF ITEM 242.
- △4 CRIMP HEIGHT REFERENCE SETTING WAS THE SETTING USED WHEN THE APPLICATOR WAS QUALIFIED AT THE FACTORY. ADJUSTMENT MAY BE NECESSARY WHEN RUNNING APPLICATOR IN THE FIELD.
- △5 APPLY TORQ-SEAL IN ALLEN SOCKET TO FILL HOLE AFTER FLAT HD HAS BEEN ADJUSTED TO CORRECT HEIGHT AT QUALIFICATION. APPLY #1-23419-5 LOC-TITE TO THREADS.
- 6. UNLESS SPECIFIED OTHERWISE TORQUE VALUES SHALL BE USED PER DOCUMENT, 101-35000.
- △7 WHEN RUNNING WIRE TYPES OTHER THAN WHAT IS LISTED IN THE APPROPRIATE APPLICATION SPECIFICATION. REFER TO NOTE 8.
- △8 THIS CRIMP PARAMETER IS PROVIDED TO MEET A CUSTOM AND UNIQUE CUSTOMER REQUIREMENT. IT HAS BEEN EVALUATED AND IS CONDITIONALLY SPECIFIED BY TE CONNECTIVITY. THIS CUSTOMIZED CRIMP PARAMETER IS NOT LISTED AS AN APPROVED APPLICATION WITHIN THE TERMINAL MANUFACTURER'S SPECIFICATIONS. TE CONNECTIVITY EXPRESSLY DISCLAIMS ANY AND ALL WARRANTIES THAT THE PRODUCT WILL PERFORM SIMILARLY TO VALIDATED AND APPROVED APPLICATIONS, AS STATED WITHIN THE MANUFACTURER'S APPLICATION SPECIFICATIONS, INCLUDING BUT NOT LIMITED TO IMPLIED WARRANTIES OF MERCHANTABILITY OR FITNESS FOR PARTICULAR PURPOSE. AS SUCH, IT IS HIGHLY RECOMMENDED THAT THE CUSTOMER PERFORM FURTHER EVALUATION TO ASSESS PRODUCT PERFORMANCE IN THE SPECIFIC APPLICATION AND OBTAIN APPROVAL FROM TERMINAL MANUFACTURER FOR THIS CUSTOM REQUIREMENT
- △9 TERMINAL LUBRICANT IS RECOMMENDED.
- △10 WHEN APPLYING SOCKET TERMINAL 929990, SWAP LOCATION OF SPACERS ITEMS 7 AND 302. THE POSITION OF THE SPACERS AS SHOWN IN THE ASSEMBLY EXPLODED VIEW IS FOR APPLYING PIN TERMINAL 929968.
- △11 USE TERMINAL SUPPORT, ITEM 34, WHEN APPLYING PIN TERMINAL 929968. USE TERMINAL SUPPORT, ITEM 301, WHEN APPLYING SOCKET TERMINAL 929990. (SEE TERMINAL SUPPORT LOCATION VIEWS ON SHEET 2).

***WARNING**
ON INSTALLATION, SET WIRE DISC TO CRIMP HEIGHT REFERENCE SETTING FOR LARGEST WIRE SIZE. CRIMP HEIGHT REFERENCE SETTINGS GREATER THAN THE VALUE SHOWN MAY CAUSE DAMAGE TO THE CRIMP TOOLING. REFER TO THE INSTRUCTION SHEET FOR PROPER SETUP AND ADJUSTMENTS.

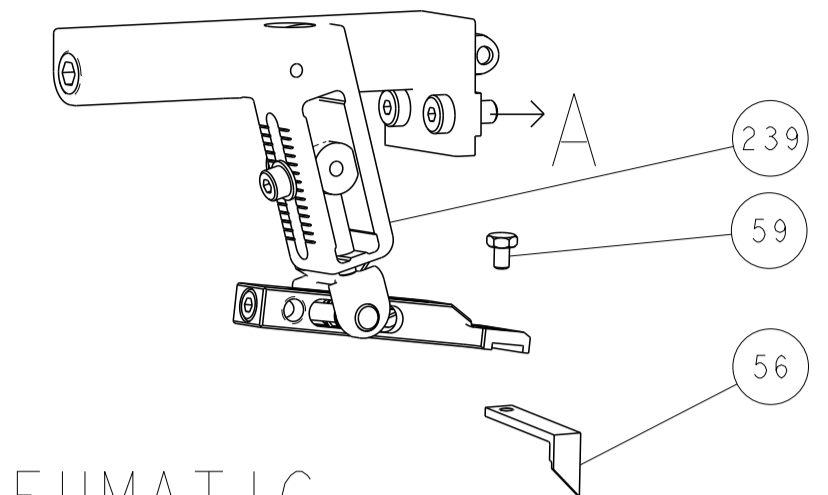
| LOC | DIST | REVISIONS | | | | | |
|-----|------|-----------|-----|---------------|-----------|-----|------|
| A | 66 | P | LTN | DESCRIPTION | DATE | OWN | APVD |
| | | G | | ECR-22-134169 | 29MAR2022 | FZ | JH |
| | | H | | ECR-23-190262 | 19OCT2023 | JWC | TE |
| | | H1 | | ECR-23-194819 | 11DEC2023 | ROY | TLE |
| | | J | | ECR-24-203802 | 26MAR2024 | MEH | GB |

| | | | | | | | | |
|----|---|-----|-----|-----|-----|-------------|-------------------------------------|-----|
| △0 | - | 1 | 1 | 1 | 1 | 6-240641-5 | SPACER | 302 |
| △1 | - | 1 | 1 | 1 | 1 | 1752356-3 | SUPPORT, TERMINAL | 301 |
| | - | 1 | 1 | 1 | 1 | 2-1803945-2 | TONKER - | 300 |
| | - | 1 | 1 | 1 | 1 | 22278-9 | SPRING, COMPRESSION | 299 |
| | - | 2 | 2 | 2 | 2 | 4-18032-3 | SCR, SET, FLT PNT, M3 X 6.0 | 298 |
| | - | 1 | 1 | 1 | 1 | 1803944-1 | SPACER, TONKER | 297 |
| | - | 1 | 1 | - | - | 2-1803583-1 | APPLICATOR BASIC ASSEMBLY, SF | 292 |
| | - | 1 | - | 1 | - | 2119641-1 | FEED CAM, AIR FEED | 248 |
| | - | 1 | 1 | 1 | 1 | 2119082-9 | CAM, SNAIL, INSULATION ADJUSTMENT | 244 |
| | - | 1 | 1 | 1 | 1 | 2079764-1 | WASHER, WAVE SPRING, CREST-TO-CREST | 243 |
| △3 | - | 1 | 1 | 1 | 1 | 2119083-1 | RETAINER, INSULATION DIAL | 242 |
| | - | 1 | 1 | 1 | 1 | 7-18023-7 | SCR, SKT HD CAP M3 X 4.0 | 241 |
| | - | 1 | - | 1 | - | 2119580-1 | MECHANICAL FEED ASSEMBLY | 239 |
| | - | 1 | - | 1 | - | 2844940-1 | AIR FEED MODULE | 238 |
| | - | REF | REF | REF | REF | 994970-2 | COUNTER, MAGNETIC | 164 |
| △9 | - | 1 | 1 | 1 | 1 | 2119955-1 | ASSY, LUBRICATOR, SIDE FEED | 113 |
| | - | 1 | 1 | 1 | 1 | 2844908-1 | SCREW, LOCKING | 99 |
| | - | 1 | 1 | 1 | 1 | 2844907-1 | POST, LOCKING | 98 |
| | - | 1 | 1 | 1 | 1 | 455888-8 | SPACER, CRIMPER - | 82 |
| | - | 1 | 1 | 1 | 1 | 1803607-3 | DOCUMENTATION PACKAGE | 71 |
| | - | 1 | 1 | 1 | 1 | 1-1803948-1 | DEPRESSOR, WIRE, SPECIAL - | 70 |
| | - | 1 | 1 | 1 | 1 | 2119943-1 | WASHER, SPACER | 69 |
| | - | 1 | 1 | 1 | 1 | 2119740-1 | TAG, IDENTIFICATION | 67 |
| | - | 2 | 2 | 2 | 2 | 2168078-1 | SCREW, DRIVE, RH, RoHS, 2 x .188 | 66 |
| | - | 1 | 1 | 1 | 1 | 2168083-2 | SCR, SKT HD CAP, RoHS, M4 X 8.0 | 60 |
| | - | 1 | 1 | 1 | 1 | 5-18022-5 | SCR, HEX HD CAP, M4 X 6.0 | 59 |
| △5 | - | 1 | 1 | 1 | 1 | 985575-3 | SCR, FLT SKT HD CAP M3 X 10.0 | 57 |
| | - | 1 | 1 | 1 | 1 | 1338683-8 | FEED PAWL | 56 |
| | - | 4 | 4 | 4 | 4 | 2168083-3 | SCR, SKT HD CAP, RoHS, M4 X 12.0 | 54 |
| | - | 2 | 2 | 2 | 2 | 1-2168083-2 | SCR, SKT HD CAP, RoHS, M4 X 25 | 53 |
| | - | 1 | 2 | 1 | 2 | 18023-9 | SCR, SKT HD CAP M4 X 6.0 | 49 |
| | - | - | 1 | - | 1 | 2119652-1 | FEED CAM, PRE FEED | 48 |
| | - | - | 1 | - | 1 | 2119653-1 | FEED CAM, POST FEED | 47 |
| | - | - | - | 1 | 1 | 1803583-9 | APPLICATOR BASIC ASSEMBLY, SF | 46 |
| | - | 1 | 1 | 1 | 1 | 1803515-1 | RAM ASSEMBLY, SF ATLANTIC | 44 |
| | - | 1 | 1 | 1 | 1 | 1803602-1 | SCR, BHSC, RoHS (M8 X 25) | 41 |
| △1 | - | 1 | 1 | 1 | 1 | 8-1752356-4 | SUPPORT, TERMINAL | 34 |
| | - | 2 | 2 | 2 | 2 | 2079383-5 | SCR, BHSC, RoHS (M4 X 20) | 33 |
| | - | 2 | 2 | 2 | 2 | 3-2844962-3 | SPACER, CYLINDRICAL, STRIP GUIDE | 30 |
| | - | 1 | 1 | 1 | 1 | 2844992-1 | ASSEMBLY, STRIP GUIDE - | 29 |
| | - | 1 | 1 | 1 | 1 | 455888-3 | SPACER, CRIMPER - | 28 |
| | - | 1 | 1 | 1 | 1 | 1320928-6 | STRIP GUIDE | 24 |
| | - | - | - | 1 | 1 | 2168083-2 | SCR, SKT HD CAP, RoHS, M4 X 8.0 | 21 |
| | - | 1 | 1 | 2 | 2 | 1-18028-2 | WASHER, FLAT, REG M4 | 20 |
| | - | - | - | 1 | 1 | 2119533-1 | STRIPPER, SIDE FEED | 19 |
| △1 | - | 1 | 1 | 1 | 1 | 2119806-1 | INSERT, SHEAR | 13 |
| | - | 1 | 1 | 1 | 1 | 3-22280-3 | SPRING, COMPRESSION | 12 |
| | - | 1 | 1 | 1 | 1 | 1-356885-4 | STOP, SHEAR | 11 |
| △1 | - | 1 | 1 | 1 | 1 | 2119805-1 | SHEAR HOLDER, FRONT - | 10 |
| △1 | - | 1 | 1 | 1 | 1 | 318707-1 | FLOATING SHEAR, FRONT | 9 |
| △1 | 1 | 1 | 1 | 1 | 1 | 1-1333206-6 | ANVIL, COMBINATION .100 | 8 |
| △0 | - | 1 | 1 | 1 | 1 | 8-240641-5 | SPACER | 7 |
| | - | - | - | - | - | - | - | 6 |
| | - | 1 | 1 | 1 | 1 | 2119781-5 | DEPRESSOR, SHEAR | 5 |
| | - | 1 | 1 | 1 | 1 | 2-238011-1 | BLOCK, CRIMPER SPACER | 4 |
| △1 | 1 | 1 | 1 | 1 | 1 | 1633996-8 | CRIMPER, INSULATION SPECIAL | 3 |
| | - | 1 | 1 | 1 | 1 | 455888-5 | SPACER, CRIMPER - | 2 |
| △1 | 1 | 1 | 1 | 1 | 1 | 456407-6 | CRIMPER, WIRE PREMIUM | 1 |

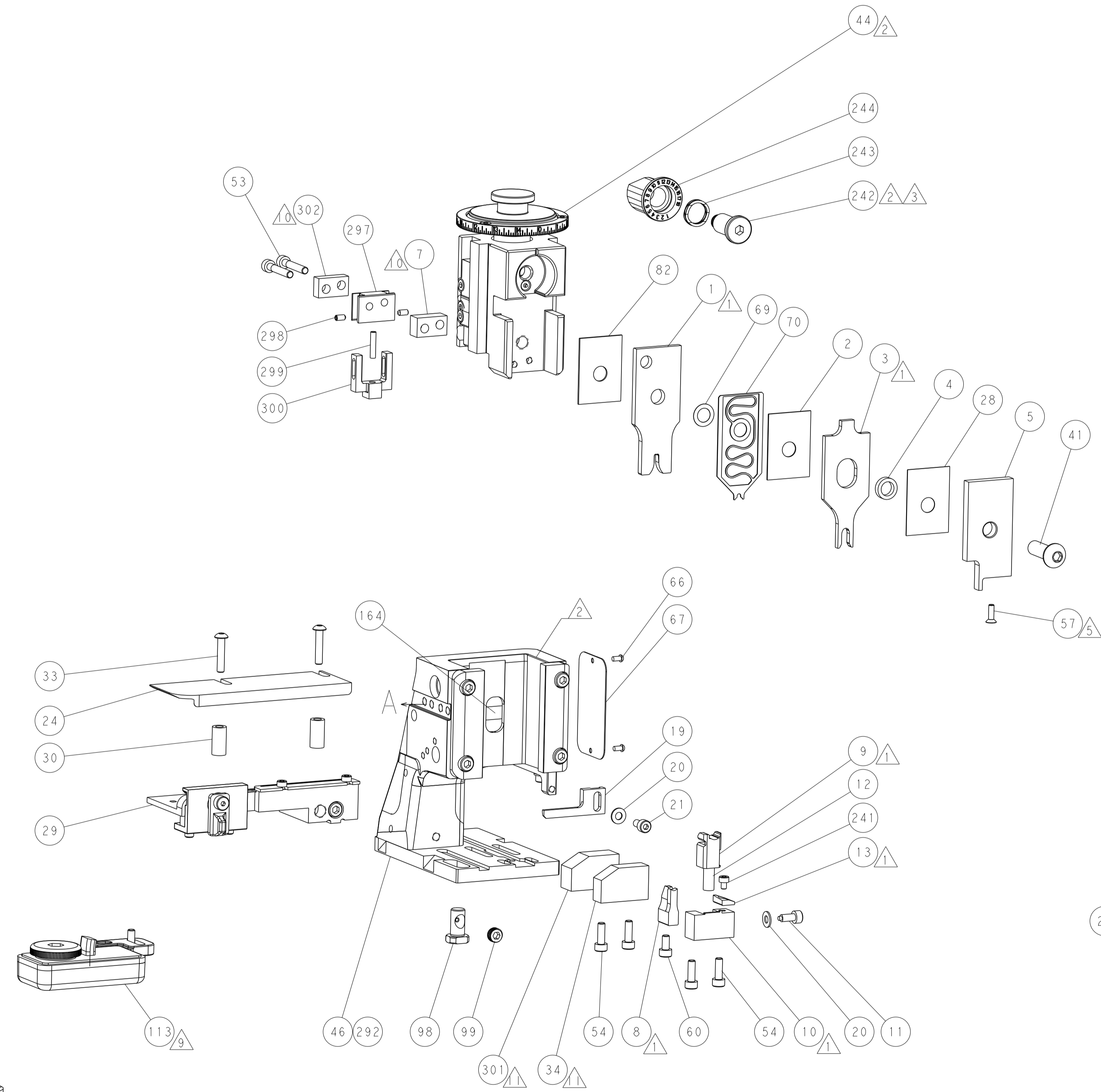
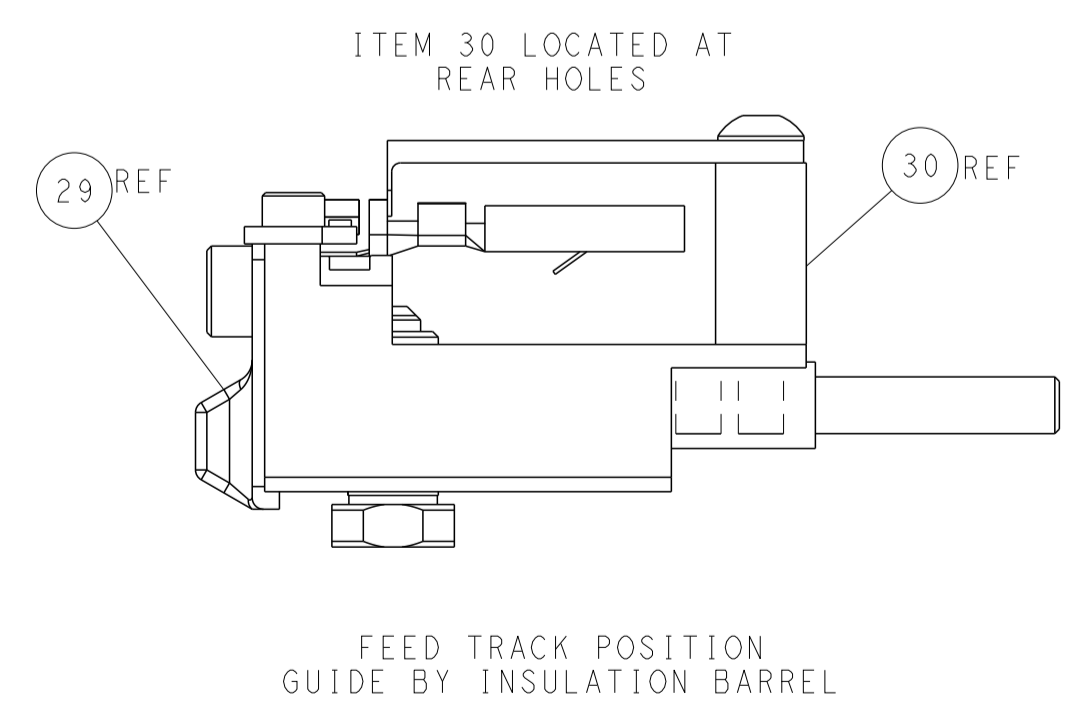
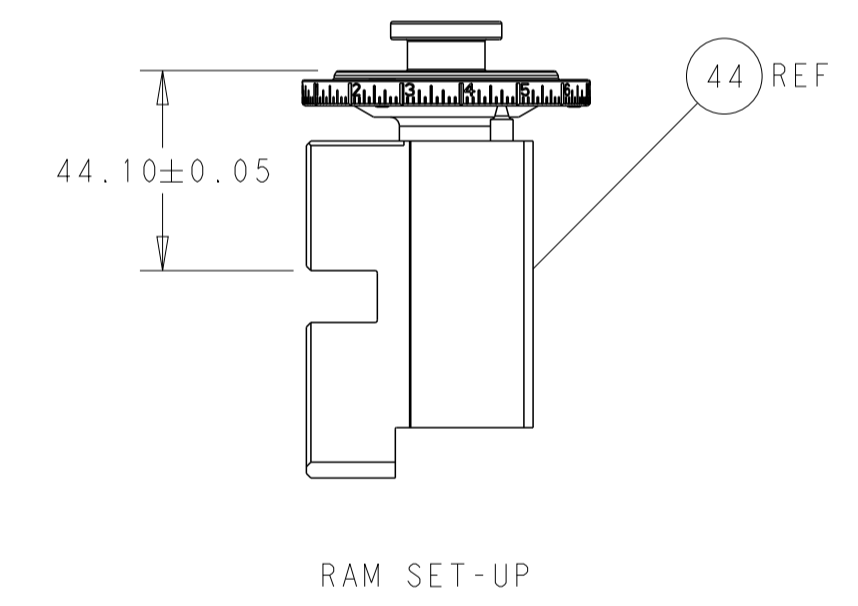
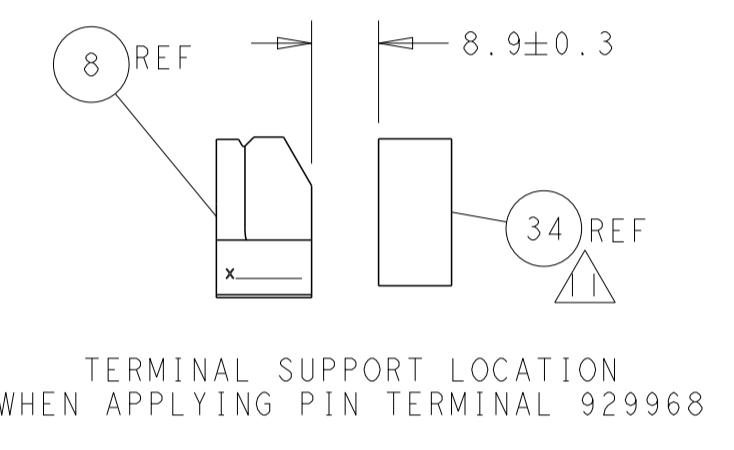
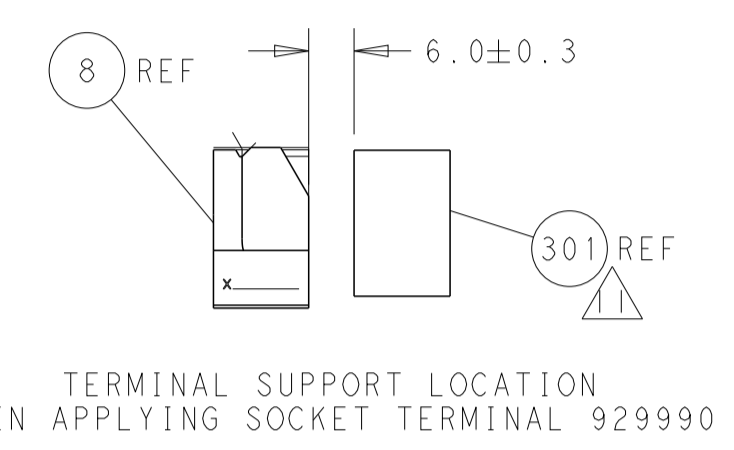
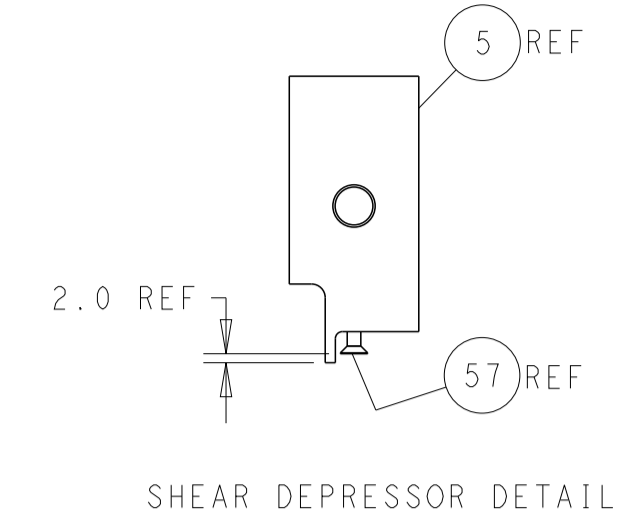
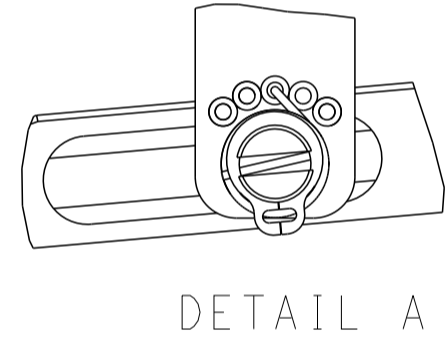
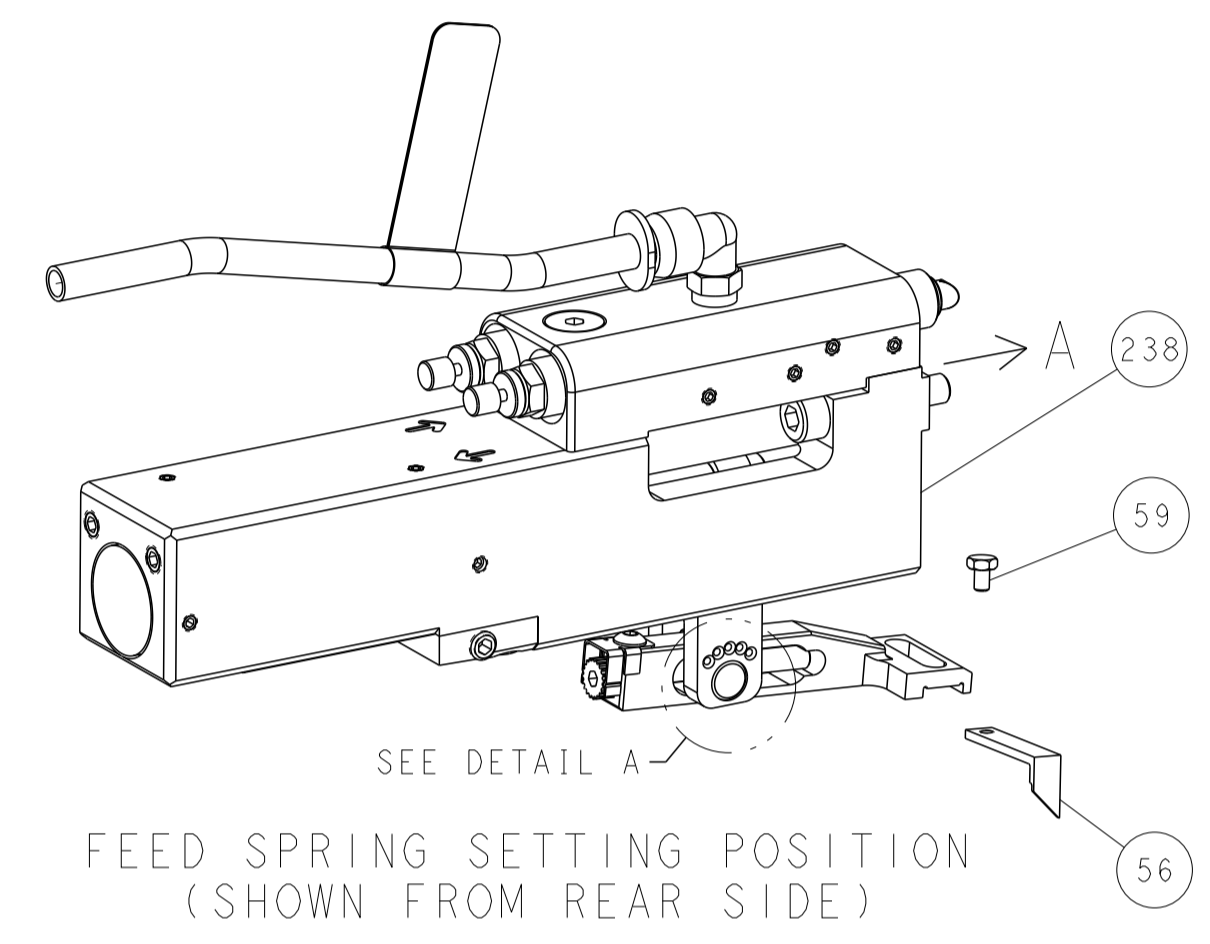
| | | | |
|---|--|---|---|
| <small>THIS DRAWING IS UNPUBLISHED. IT IS THE PROPERTY OF STC CONNECTIVITY. IT IS TO BE USED ONLY FOR THE SPECIFIC APPLICATION AND IS NOT TO BE REPRODUCED OR TRANSMITTED IN ANY FORM OR BY ANY MEANS, ELECTRONIC OR MECHANICAL, WITHOUT THE WRITTEN PERMISSION OF STC CONNECTIVITY. THE USER SHALL BE RESPONSIBLE FOR OBTAINING THE NECESSARY PERMISSIONS FROM THE APPLICABLE LEGISLATION.</small> | | DWN T.YIN 09NOV2011 CHK G.BAILEY 09NOV2011 APVD S.XI 09NOV2011 | TE Connectivity Harrisburg, PA 17105-3608 |
| DIMENSIONS: mm | | TOLERANCES UNLESS OTHERWISE SPECIFIED: 0 PLC ± 1 PLC ± 2 PLC ± 3 PLC ± 4 PLC ± ANGLES ± FINISH | NAME Ocean Side Feed Applicator SIZE CAGE CODE DRAWING NO RESTRICTED TO A1 00779 C=2151345 CUSTOMER ACCESSIBLE PRODUCTION DRAWING SCALE 1:2 SHEET 1 OF 4 REV J |

| LOC | DIST | REVISIONS | | | | | |
|-----|------|-----------|-----|-------------|------|-----|------|
| A | 66 | P | LTN | DESCRIPTION | DATE | OWN | APVD |
| | | - | | SEE SHEET 1 | | | |

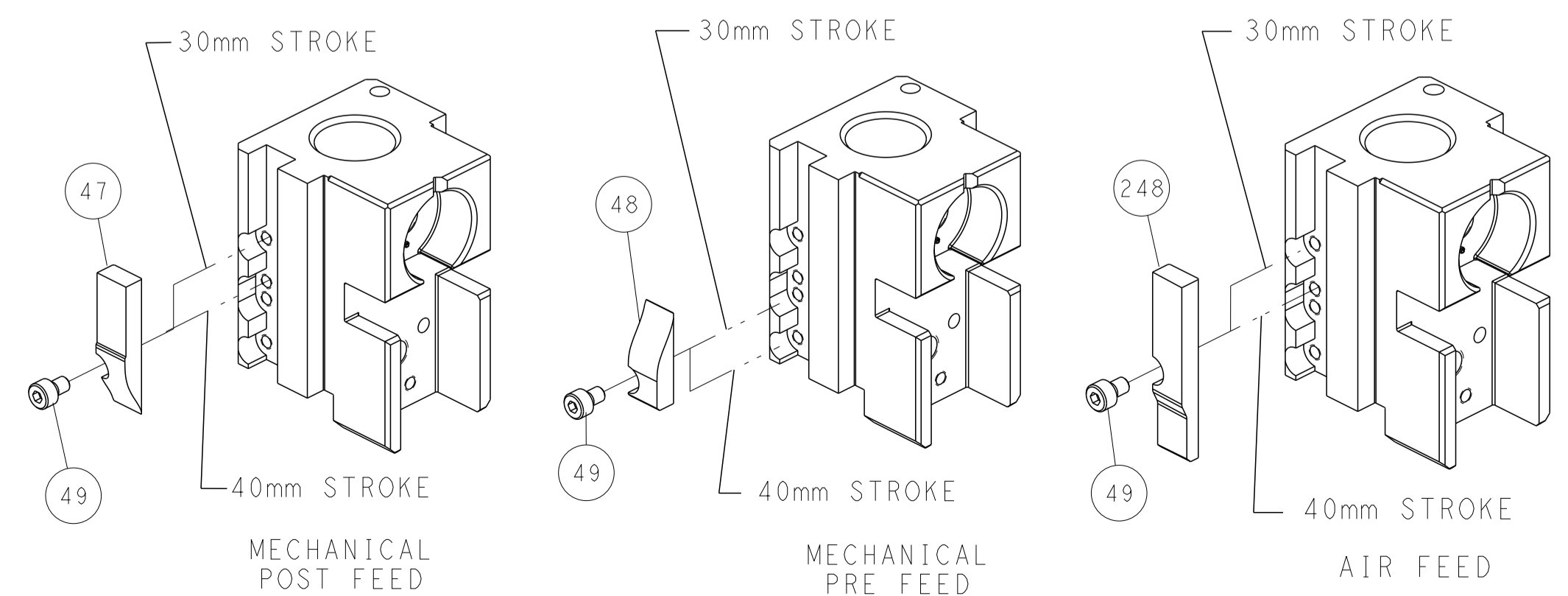
FEED TYPE MECHANICAL



PNEUMATIC



CAM POSITIONS



| | | | | | | | |
|-------------|---------|--|---------|--|---------|----------------------------------|--|
| DIMENSIONS: | | TOLERANCES UNLESS OTHERWISE SPECIFIED: | | OWN: Y. YIN 09NOV2011 | | TE Connectivity | |
| mm | 0 PLC ± | 1 PLC ± | 2 PLC ± | 3 PLC ± | 4 PLC ± | Harrisburg, PA 17105-3608 | |
| MATERIAL: | | FINISH: | | APVD: S. X. I 09NOV2011 | | NAME: Ocean Side Feed Applicator | |
| | | | | PRODUCT SPEC: | | SIZE: A1 | |
| | | | | APPLICATION SPEC: | | CAGE CODE: 00779 | |
| | | | | WEIGHT: | | DRAWING NO: 2151345 | |
| | | | | CUSTOMER ACCESSIBLE PRODUCTION DRAWING | | SCALE: 1:2 | |
| | | | | | | SHEET 2 OF 4 | |
| | | | | | | REV J | |