

PART NUMBER	REVISION	DESCRIPTION	FEED TYPE
2151457-1	D	FINE CRIMP HEIGHT ADJUST	MECHANICAL
2151457-2	D	FINE CRIMP HEIGHT ADJUST	PNEUMATIC
7-2151457-7	A	CRIMP TOOLING KIT	-

ATLANTIC VERSION TERMINATOR  
 INTERFACE ADAPTER



APPLICATOR DATA

CRIMP	SIZE	TYPE
WIRE	2.41 mm [.095]	F
INSUL	4.39 mm [.173]	O

APPLICATOR INSTRUCTIONS  
 408-35042

TERMINAL DATA: DELPHI TERMINAL DELPHI CRIMP SPECIFICATION

TERMINAL NAME: TAXI TERMINAL M/P 280

WIRE STRIP LENGTH	INSULATION DIAMETER RANGE
5.20-6.00 mm [.205-.236 IN]	∅

TERMINAL APPLICATION SPECIFICATION

DELPHI	
-	-
-	-

TERMINALS APPLIED

TE TERMINAL	DELPHI TERMINAL	TE SEAL	DELPHI SEAL	CABLE DIAMETER
286755-1	12048159	1949092-1	15324985	1.60-2.15
		1949807-1	15324982	2.03-2.85
		1572716-1	12010293	2.81-3.49
		1572716-3	15324980	2.81-3.49
		1572757-1	12015323	2.03-2.85

TERMINAL DATA: DELPHI TERMINAL TE CRIMP SPECIFICATION

TERMINAL NAME: TAXI TERMINAL M/P 280

WIRE STRIP LENGTH	INSULATION DIAMETER RANGE
5.20-6.00 mm [.205-.236 IN]	∅

TERMINAL APPLICATION SPECIFICATION

DELPHI	
-	NONE
-	-

TERMINALS APPLIED

TE TERMINAL	DELPHI TERMINAL	TE SEAL	DELPHI SEAL	CABLE DIAMETER
286755-1	12048159	1949092-1	15324985	1.60-2.15
		1949807-1	15324982	2.03-2.85
		1572716-1	12010293	2.81-3.49
		1572716-3	15324980	2.81-3.49
		1572757-1	12015323	2.03-2.85

WIRE SIZE	CRIMP HEIGHT mm [INCH]	CRIMP HEIGHT REFERENCE SETTING
1.00mm2	1.40 +/- 0.05 [.055 +/- .002]	6.8
0.80mm2	1.30 +/- 0.05 [.051 +/- .002]	7.9
0.50mm2	1.20 +/- 0.05 [.047 +/- .002]	8.9

WIRE SIZE	CRIMP HEIGHT mm [INCH]	CRIMP HEIGHT REFERENCE SETTING
16 AWG OR 1.25mm2	1.48 +/- 0.05 [.058 +/- .002]	7.6



- RECOMMENDED SPARE PARTS
- REFER TO SUPPLIED INSTRUCTION SHEET FOR CLEANING, LUBRICATION AND STORAGE OF APPLICATOR.
- APPLY PART NUMBER 2-23419-6 LOCTITE TO THREADS OF ITEM 242.
- CRIMP HEIGHT REFERENCE SETTING WAS THE SETTING USED WHEN THE APPLICATOR WAS QUALIFIED AT THE FACTORY. ADJUSTMENT MAY BE NECESSARY WHEN RUNNING APPLICATOR IN THE FIELD.
- APPLY TORO-SEAL IN ALLEN SOCKET TO FILL HOLE AFTER FLAT HD HAS BEEN ADJUSTED TO CORRECT HEIGHT AT QUALIFICATION. APPLY #1-23419-5 LOC-TITE TO THREADS.
- UNLESS SPECIFIED OTHERWISE TORQUE VALUES SHALL BE USED PER DOCUMENT, 101-35000.

**\*WARNING**  
 ON INSTALLATION, SET WIRE DISC TO CRIMP HEIGHT REFERENCE SETTING FOR LARGEST WIRE SIZE. CRIMP HEIGHT REFERENCE SETTINGS GREATER THAN THE VALUE SHOWN MAY CAUSE DAMAGE TO THE CRIMP TOOLING. REFER TO THE INSTRUCTION SHEET FOR PROPER SETUP AND ADJUSTMENTS.

This crimp parameter is provided to meet a custom and unique customer requirement. It has been evaluated and is conditionally specified by TE Connectivity. This customized crimp parameter is not listed as an approved application within the terminal manufacturer's specifications. **TE Connectivity expressly disclaims any and all warranties that the product will perform similarly to validated and approved applications, as stated within the manufacturer's application specifications, including but not limited to implied warranties of merchantability or fitness for particular purpose.** As such, it is highly recommended that the customer perform further detailed evaluation to assess product performance in the specific application and obtain approval from terminal manufacturer for this custom requirement.

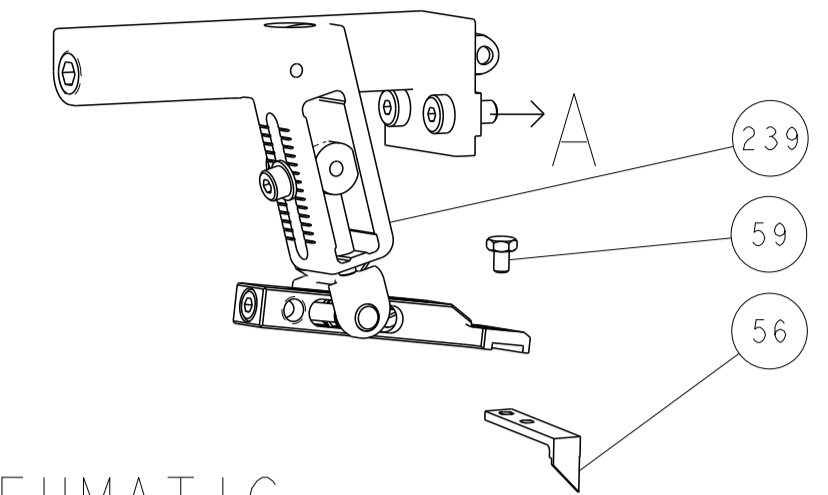
LOC	DIST	REV	DATE	BY	CHK	APPD
A	66	B	15MAY2018	TB	JDG	
		B1	30JUL2018	AW	TE	
		C	03JAN2023	LG	RK	
		D	18APR2024	TB	TE	

REV	DATE	BY	CHK	APPD	DESCRIPTION	ITEM NO
-	1	-			2119641-1 FEED CAM, AIR FEED	248
-	1	1			2119082-2 CAM, SNAIL, INSULATION ADJUSTMENT	244
-	1	1			2079764-1 WASHER, WAVE SPRING, CREST-TO-CREST	243
-	1	1			2119083-1 RETAINER, INSULATION DIAL	242
-	1	1			7-18023-7 SCR, SKT HD CAP M3 X 4.0	241
-	-	1			2119580-1 MECHANICAL FEED ASSEMBLY	239
-	1	-			2844940-1 AIR FEED MODULE	238
-	REF	REF			994970-2 COUNTER, MAGNETIC	164
-	1	1			2844908-1 SCREW, LOCKING	99
-	1	1			2844907-1 POST, LOCKING	98
-	1	1			318563-1 GUARD, FRONT CHIP	89
-	1	1			455888-6 SPACER, CRIMPER	82
-	2	2			2079383-4 SCR, BHSC, RoHS (M4 X 8)	79
-	1	1			1803096-1 EXTENSION PLATE	78
-	1	1			1803607-3 DOCUMENTATION PACKAGE	71
-	1	1			2119740-1 TAG, IDENTIFICATION	67
-	2	2			2168078-1 SCREW, DRIVE, RH, RoHS, 2 x .188	66
-	1	1			2168083-2 SCR, SKT HD CAP, RoHS, M4 X 8.0	60
-	1	1			5-18022-5 SCR, HEX HD CAP, M4 X 6.0	59
-	1	1			985575-3 SCR, FLT SKT HD CAP M3 X 10.0	57
-	1	1			1338685-1 PAWL, FEED	56
-	4	4			2168083-3 SCR, SKT HD CAP, RoHS, M4 X 12.0	54
-	2	2			2168083-8 SCR, SKT HD CAP, RoHS, M4 X 16	53
-	1	1			5018030-1 NUT, HEX, REG, RoHS, M3	52
-	1	1			811242-5 BUMPER, HOLD DOWN	51
-	1	1			690753-2 SPACER, TONKER	50
-	1	2			18023-9 SCR, SKT HD CAP M4 X 6.0	49
-	-	1			2119652-1 FEED CAM, PRE FEED	48
-	-	1			2119653-1 FEED CAM, POST FEED	47
-	1	1			1803583-9 APPLICATOR BASIC ASSEMBLY, SF	46
-	1	1			1803515-1 RAM ASSEMBLY, SF ATLANTIC	44
-	1	1			1803602-1 SCR, BHSC, RoHS (M8 X 25)	41
-	1	1			1752356-3 SUPPORT, TERMINAL	34
-	2	2			2079383-5 SCR, BHSC, RoHS (M4 X 20)	33
-	2	2			1-2844962-7 SPACER, CYLINDRICAL, STRIP GUIDE	30
-	1	1			2844992-1 ASSEMBLY, STRIP GUIDE	29
-	1	1			455888-3 SPACER, CRIMPER	28
-	1	1			1320928-4 STRIP GUIDE	24
-	1	1			2168083-2 SCR, SKT HD CAP, RoHS, M4 X 8.0	21
-	1	1			1-18028-2 WASHER, FLAT, REG M4	20
-	1	1			2119533-1 STRIPPER, SIDE FEED	19
-	1	1			2119806-1 INSERT, SHEAR	13
-	1	1			3-22280-3 SPRING, COMPRESSION	12
-	1	1			1-356885-4 STOP, SHEAR	11
-	1	1			2119805-1 SHEAR HOLDER, FRONT	10
-	1	1			318707-1 FLOATING SHEAR, FRONT	9
-	1	1			1633905-7 ANVIL, COMBINATION	8
-	1	1			240641-4 SPACER	7
-	-	-			-	6
-	1	1			2119781-1 DEPRESSOR, SHEAR	5
-	1	1			238011-2 BLOCK, CRIMPER SPACER	4
-	1	1			4-1633965-2 CRIMPER, INSULATION O PREMIUM	3
-	1	1			455888-6 SPACER, CRIMPER	2
-	1	1			7-1490019-5 CRIMPER, WIRE PREMIUM	1

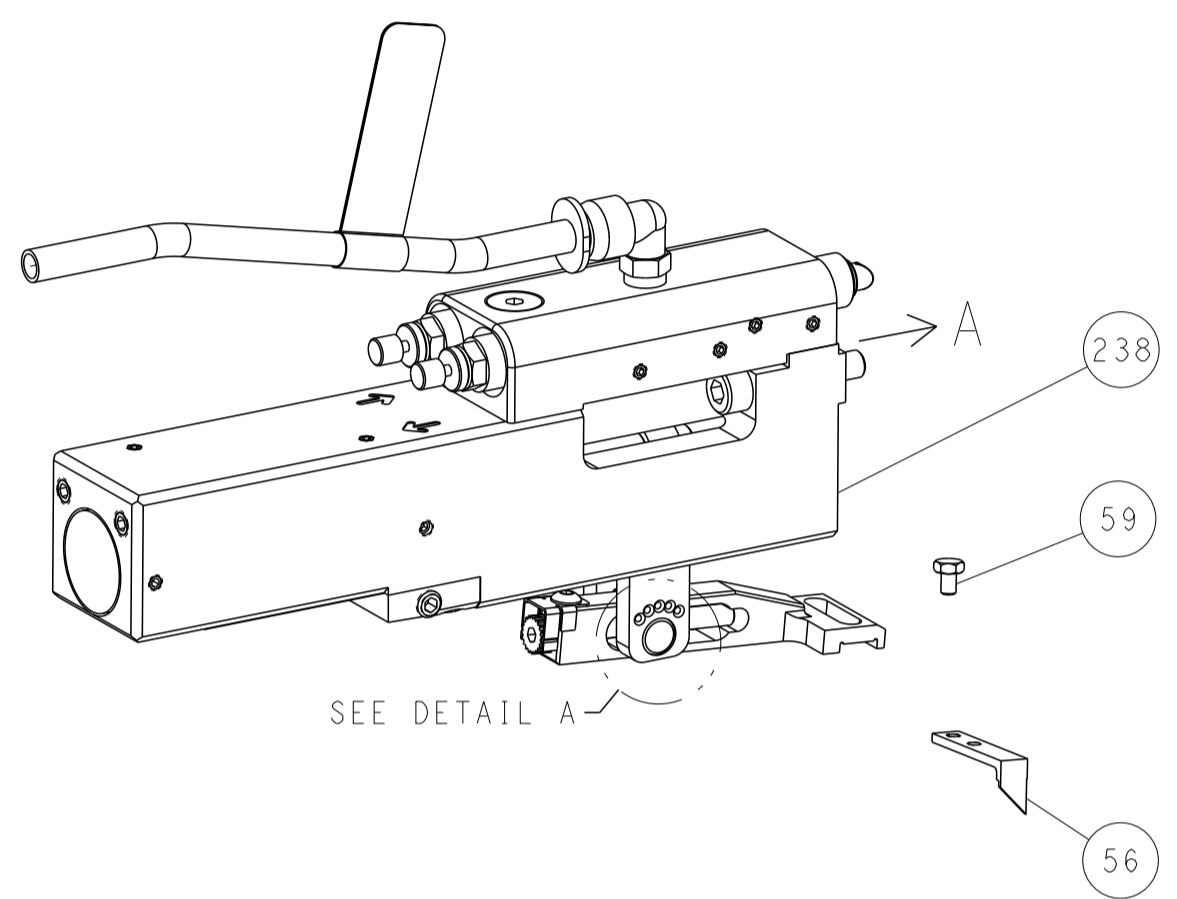
REV	DATE	BY	CHK	APPD	DESCRIPTION	ITEM NO
0	PLC	±				
1	PLC	±				
2	PLC	±				
3	PLC	±				
4	PLC	±				
DIMENSIONS:		TOLERANCES UNLESS OTHERWISE SPECIFIED:		NAME		
mm		±		Ocean Side Feed		
APPLICATOR SPEC		APPLICATOR SPEC		APPLICATOR SPEC		
MATERIAL		FINISH		WEIGHT		
-		-		A   00779   C=2151457		
Customer Accessible Production Drawing		SCALE 1:2		SHEET 1 OF 4		REV D

LOC	DIST	REVISIONS					
A	66	P	LTN	DESCRIPTION	DATE	OWN	APVD
		-		SEE SHEET 1	-	-	-

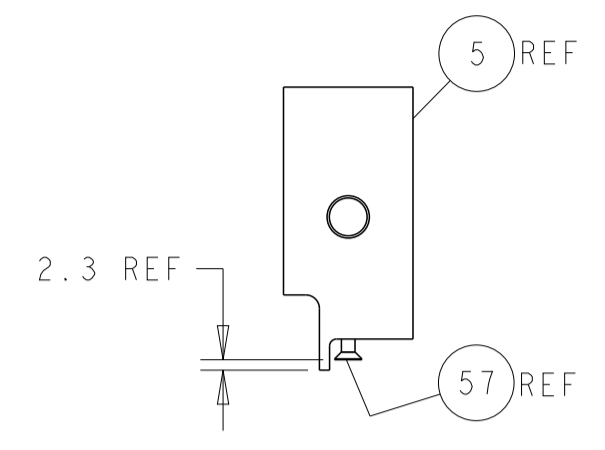
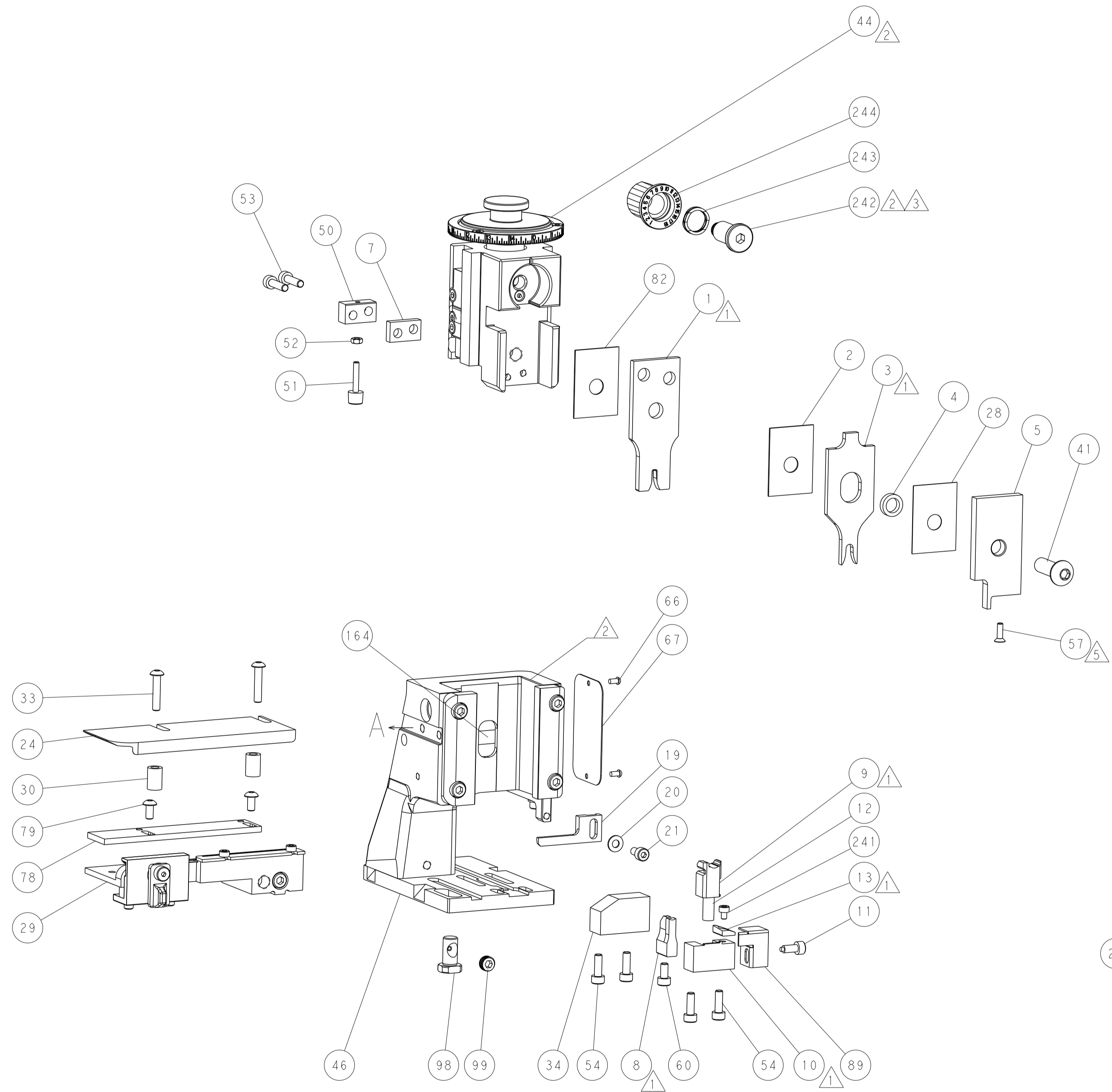
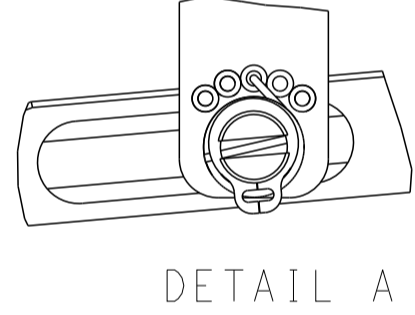
# FEED TYPE MECHANICAL



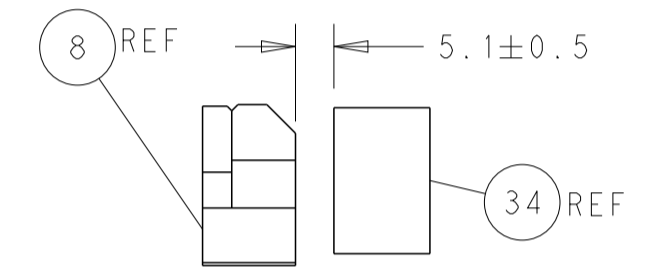
## PNEUMATIC



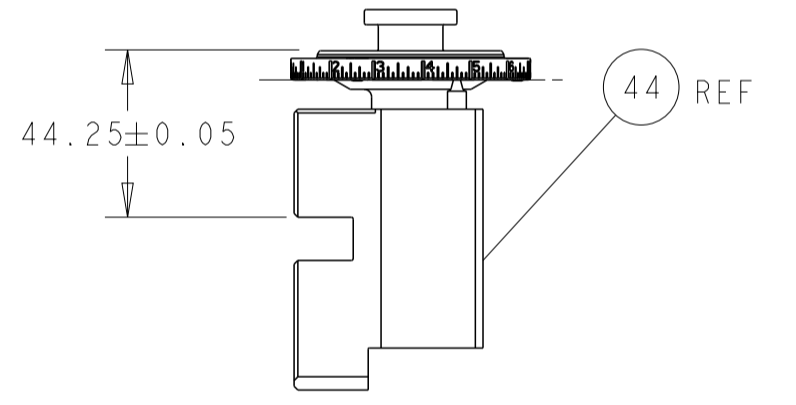
## FEED SPRING SETTING POSITION (SHOWN FROM REAR SIDE)



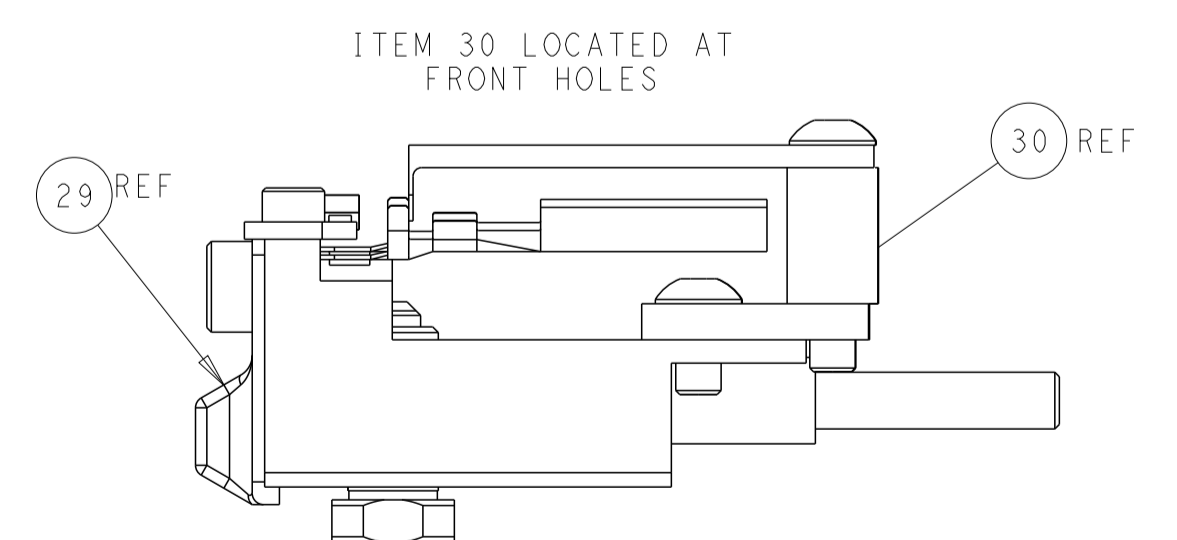
SHEAR DEPRESSOR DETAIL



TERMINAL SUPPORT LOCATION

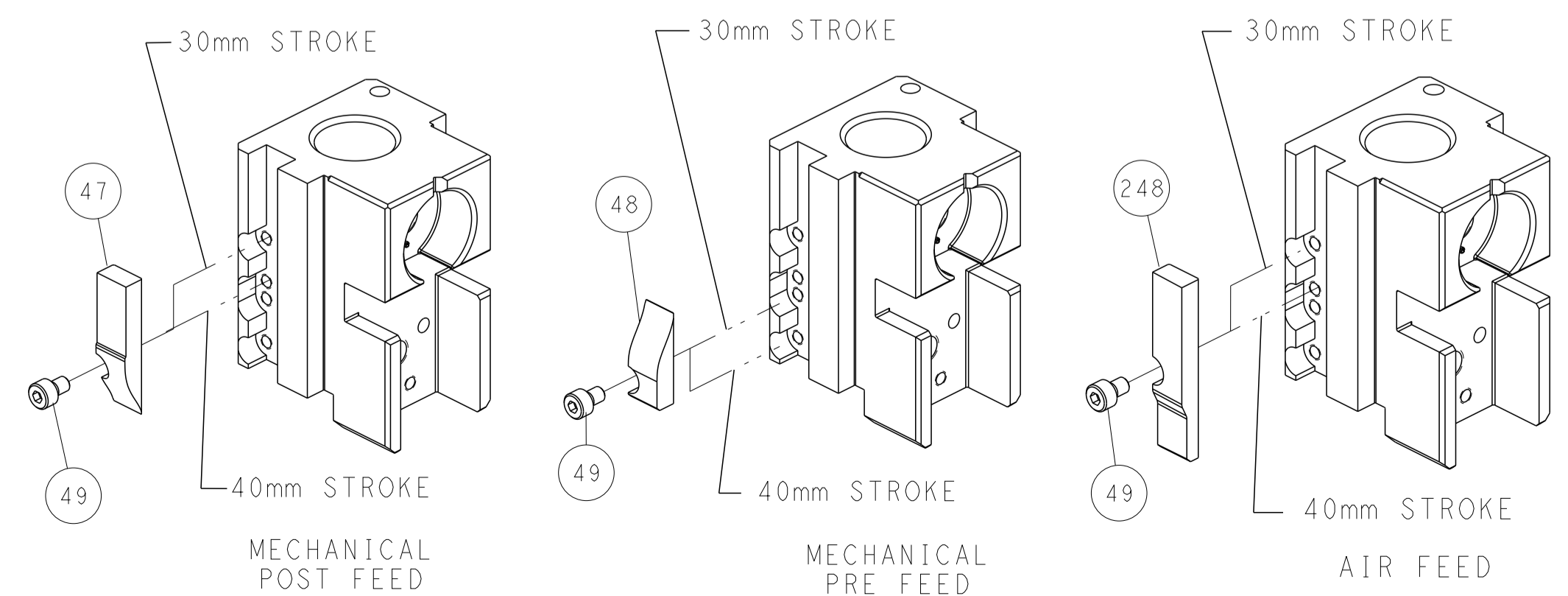


RAM SET-UP



FEED TRACK POSITION GUIDE BY INSULATION BARREL

# CAM POSITIONS



<small>THIS DRAWING IS UNPUBLISHED. RELEASED FOR PUBLICATION BY TYCO ELECTRONICS CORPORATION. ALL RIGHTS RESERVED.</small>		DWN: R. HUANG 06JUN2012 CHK: S. XI 06JUN2012 APVD: S. XI 06JUN2012	NAME: Ocean Side Feed Applicator SIZE: A1 CAGE CODE: 00779 DRAWING NO: 2151457	TE Connectivity Harrisburg, PA 17105-3608
DIMENSIONS: mm TOLERANCES UNLESS OTHERWISE SPECIFIED: 0 PLC ± 1 PLC ± 2 PLC ± 3 PLC ± 4 PLC ± ANGLES ± FINISH	DIMENSIONS: mm TOLERANCES UNLESS OTHERWISE SPECIFIED: 0 PLC ± 1 PLC ± 2 PLC ± 3 PLC ± 4 PLC ± ANGLES ± FINISH	WEIGHT: - SCALE: 1:2 SHEET: 2 OF 4 REV: D	RESTRICTED TO: - CUSTOMER ACCESSIBLE PRODUCTION DRAWING	