

ATLANTIC VERSION TERMINATOR
 INTERFACE ADAPTER



PART NUMBER	REVISION	DESCRIPTION	FEED TYPE
2151559-1	F	FINE CRIMP HEIGHT ADJUST	MECHANICAL
2151559-2	F	FINE CRIMP HEIGHT ADJUST	PNEUMATIC
5-2151559-1	F	SEAL STRIPPER CRIMPER TERMINATING UNIT	MECHANICAL
5-2151559-2	F	SEAL STRIPPER CRIMPER TERMINATING UNIT	PNEUMATIC
7-2151559-1	F	MECHANICAL AND CRIMP TOOLING KIT	MECHANICAL
7-2151559-2	F	PNEUMATIC AND CRIMP TOOLING KIT	PNEUMATIC
7-2151559-7	A	CRIMP TOOLING KIT	-

APPLICATOR DATA

CRIMP	SIZE	TYPE
WIRE	1.57 mm [.062]	F
INSUL	3.94 mm [.155]	O

APPLICATOR INSTRUCTIONS
 408-35042

TERMINAL DATA: TE TERMINAL TE CRIMP SPECIFICATION

TERMINAL NAME: AMP MCP 2.8K FLAT TYPE RECEPTACLE

WIRE STRIP LENGTH	TERMINAL INSULATION DIAMETER RANGE
3.70-4.30 mm [.146-.169 IN]	Ø1.20-1.40 mm [.047-.055 IN]

TERMINAL APPLICATION SPECIFICATION (A)114-18148 (B)114-18144-0

TERMINAL DATA: TE TERMINAL TE CRIMP SPECIFICATION

TERMINAL NAME: AMP MCP 2.8K FLAT TYPE RECEPTACLE

WIRE STRIP LENGTH	TERMINAL INSULATION DIAMETER RANGE
3.70-4.30 mm [.146-.169 IN]	Ø1.20-1.40 mm [.047-.055 IN]

TERMINAL APPLICATION SPECIFICATION 114-18148-PSA

TERMINALS APPLIED

TE TERMINAL	TE TERMINAL	TE SEAL	TE SEAL	SEAL INSULATION DIAMETER RANGE
(A) 1-968882-1	(A) 1-968882-3	828904-1	828904-3	1.2- 2.1mm
(A) 1-968882-2	(B) 967541-1	828904-2		

TERMINALS APPLIED

TE TERMINAL	TE TERMINAL	TE SEAL	TE SEAL	SEAL INSULATION DIAMETER RANGE
1-968882-1	1-968882-3	828904-1	828904-3	1.2- 2.1mm
1-968882-2		828904-2		

WIRE SIZE	CRIMP HEIGHT mm [INCH]	CRIMP HEIGHT REFERENCE SETTING
0.35mm2	1.08+/-0.03 [.043+/- .001]	6.3
0.30mm2	1.01+/-0.03 [.040+/- .001]	7.1
22 AWG	0.97+/-0.05 [.038+/- .002]	7.6
24 AWG	0.92+/-0.03 [.036+/- .001]	8.1

WIRE SIZE	CRIMP HEIGHT mm [INCH]	CRIMP HEIGHT REFERENCE SETTING
0.50mm2	1.14+/-0.03 [.045+/- .001]	5.7
0.35mm2	1.08+/-0.03 [.043+/- .001]	6.3

- 1. RECOMMENDED SPARE PARTS
- 2. REFER TO SUPPLIED INSTRUCTION SHEET FOR CLEANING, LUBRICATION AND STORAGE OF APPLICATOR.
- 3. APPLY PART NUMBER 2-23419-6 LOCTITE TO THREADS OF ITEM 242.
- 4. CRIMP HEIGHT REFERENCE SETTING WAS THE SETTING USED WHEN THE APPLICATOR WAS QUALIFIED AT THE FACTORY. ADJUSTMENT MAY BE NECESSARY WHEN RUNNING APPLICATOR IN THE FIELD.
- 5. APPLY TORQ-SEAL IN ALLEN SOCKET TO FILL HOLE AFTER FLAT HD HAS BEEN ADJUSTED TO CORRECT HEIGHT AT QUALIFICATION. APPLY #1-23419-5 LOC-TITE TO THREADS.
- 6. UNLESS SPECIFIED OTHERWISE TORQUE VALUES SHALL BE USED PER DOCUMENT, 101-35000.
- 7. APPLICATION SPECIFICATION 114-18148-PSA IS RESTRICTED TO PEUGEOT CITROËN AND ITS HARNESS MAKERS.
- 8. TERMINAL LUBRICANT IS RECOMMENDED.
- 9. WIRE TYPES CAVS, AESSX-F.

***WARNING**
 ON INSTALLATION, SET WIRE DISC TO CRIMP HEIGHT REFERENCE SETTING FOR LARGEST WIRE SIZE. CRIMP HEIGHT REFERENCE SETTINGS GREATER THAN THE VALUE SHOWN MAY CAUSE DAMAGE TO THE CRIMP TOOLING, REFER TO THE INSTRUCTION SHEET FOR PROPER SETUP AND ADJUSTMENTS.

LOC A DIST 66

REV	DATE	BY	CHK	APP'D
E	12APR2022	JWC	TE	
E1	28JUL2022	FJ	YY	
F	22AUG2022	FJ	JAH	
F1	14NOV2022	FZ	GB	

-	1	1	1	1	1	1	1803945-4	TONKER	300
-	1	1	1	1	1	1	22278-9	SPRING, COMPRESSION	299
-	2	2	2	2	2	2	4-18032-3	SCR, SET, FLT PNT, M3 X 6.0	298
-	1	1	1	1	1	1	1803944-1	SPACER, TONKER	297
-	-	-	1	1	-	-	1803515-3	RAM ASSEMBLY, SF ATLANTIC	293
-	-	-	1	1	-	-	2-1803583-1	APPLICATOR BASIC ASSEMBLY, SF	292
-	1	-	1	-	1	-	2119641-1	FEED CAM, AIR FEED	248
-	1	1	1	1	1	1	2119082-3	CAM, SNAIL, INSULATION ADJUSTMENT	244
-	1	1	1	1	1	1	2079764-1	WASHER, WAVE SPRING, CREST-TO-CREST	243
-	1	1	1	1	1	1	2119083-1	RETAINER, INSULATION DIAL	242
-	1	1	1	1	1	1	7-18023-7	SCR, SKT HD CAP M3 X 4.0	241
-	-	1	-	1	-	1	2119580-1	MECHANICAL FEED ASSEMBLY	239
-	1	-	1	-	1	-	2844940-1	AIR FEED MODULE	238
-	REF	REF	REF	REF	REF	REF	994970-2	COUNTER, MAGNETIC	164
-	1	1	1	1	1	1	2119955-1	ASSY, LUBRICATOR, SIDE FEED	113
-	1	1	1	1	1	1	2844908-1	SCREW, LOCKING	99
-	1	1	1	1	1	1	2844907-1	POST, LOCKING	98
-	1	1	1	1	1	1	455888-4	SPACER, CRIMPER	82
-	1	1	1	1	1	1	1803607-3	DOCUMENTATION PACKAGE	71
-	1	1	1	1	1	1	2119740-1	TAG, IDENTIFICATION	67
-	2	2	2	2	2	2	2168078-1	SCREW, DRIVE, RH, RoHS, 2 x .188	66
-	1	1	1	1	1	1	2168083-2	SCR, SKT HD CAP, RoHS, M4 X 8.0	60
-	1	1	1	1	1	1	5-18022-5	SCR, HEX HD CAP, M4 X 6.0	59
-	1	1	1	1	1	1	985575-3	SCR, FLT SKT HD CAP M3 X 10.0	57
-	1	1	1	1	1	1	1338685-1	PAWL, FEED	56
-	4	4	4	4	4	4	2168083-3	SCR, SKT HD CAP, RoHS, M4 X 12.0	54
-	2	2	2	2	2	2	2-2168083-5	SCR, SKT HD CAP, RoHS, M4 X 14	53
-	1	2	1	2	1	2	18023-9	SCR, SKT HD CAP M4 X 6.0	49
-	-	1	-	1	-	1	2119652-1	FEED CAM, PRE FEED	48
-	-	1	-	1	-	1	2119653-1	FEED CAM, POST FEED	47
-	1	1	-	-	1	1	1803583-9	APPLICATOR BASIC ASSEMBLY, SF	46
-	1	1	-	-	1	1	1803515-1	RAM ASSEMBLY, SF ATLANTIC	44
-	1	1	1	1	1	1	1803602-1	SCR, BHSC, RoHS (M8 X 25)	41
-	1	1	1	1	1	1	1-1752356-7	SUPPORT, TERMINAL	34
-	2	2	2	2	2	2	2079383-5	SCR, BHSC, RoHS (M4 X 20)	33
-	2	2	2	2	2	2	3-2844962-0	SPACER, CYLINDRICAL, STRIP GUIDE	30
-	1	1	1	1	1	1	2844992-2	ASSEMBLY, STRIP GUIDE	29
-	1	1	1	1	1	1	1-455888-0	SPACER, CRIMPER	28
-	1	1	1	1	1	1	1320928-2	STRIP GUIDE	24
-	1	1	-	-	1	1	2168083-2	SCR, SKT HD CAP, RoHS, M4 X 8.0	21
-	2	2	1	1	2	2	1-18028-2	WASHER, FLAT, REG M4	20
-	1	1	-	-	1	1	2119533-1	STRIPPER, SIDE FEED	19
-	1	1	1	1	1	1	2119806-1	INSERT, SHEAR	13
-	1	1	1	1	1	1	3-22280-3	SPRING, COMPRESSION	12
-	1	1	1	1	1	1	1-356885-4	STOP, SHEAR	11
-	1	1	1	1	1	1	2119805-1	SHEAR HOLDER, FRONT	10
-	1	1	1	1	1	1	318707-1	FLOATING SHEAR, FRONT	9
1	2	2	1	1	1	1	1-1333202-5	ANVIL, COMBINATION	8
-	1	1	1	1	1	1	240641-5	SPACER	7
-	-	-	-	-	-	-	-	-	6
-	1	1	1	1	1	1	2119781-1	DEPRESSOR, SHEAR	5
-	1	1	1	1	1	1	238011-4	BLOCK, CRIMPER SPACER	4
1	2	2	1	1	1	1	2-2119784-9	CRIMPER, INSULATION O PREMIUM	3
-	1	1	1	1	1	1	1-455888-3	SPACER, CRIMPER	2
1	2	2	1	1	1	1	1-456403-3	CRIMPER, WIRE PREMIUM	1

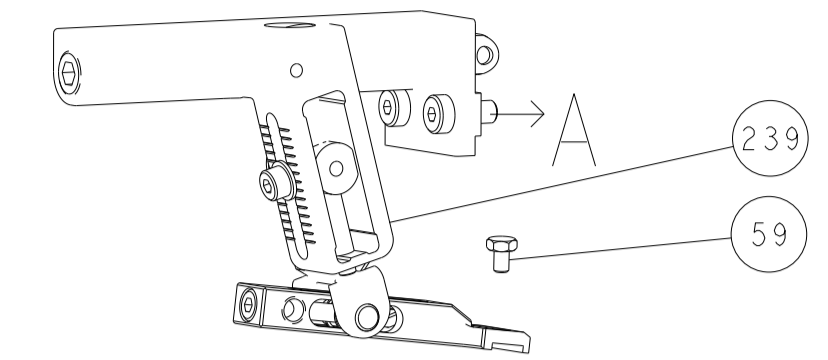
ATLANTIC VERSION
 Shown on sheets 1 of 4 & 2 of 4
 (Pacific version shown on sheets 3 of 4 & 4 of 4)

THIS DRAWING IS UNPUBLISHED. RELEASED FOR PUBLICATION BY TYCO ELECTRONICS CORPORATION. ALL RIGHTS RESERVED.

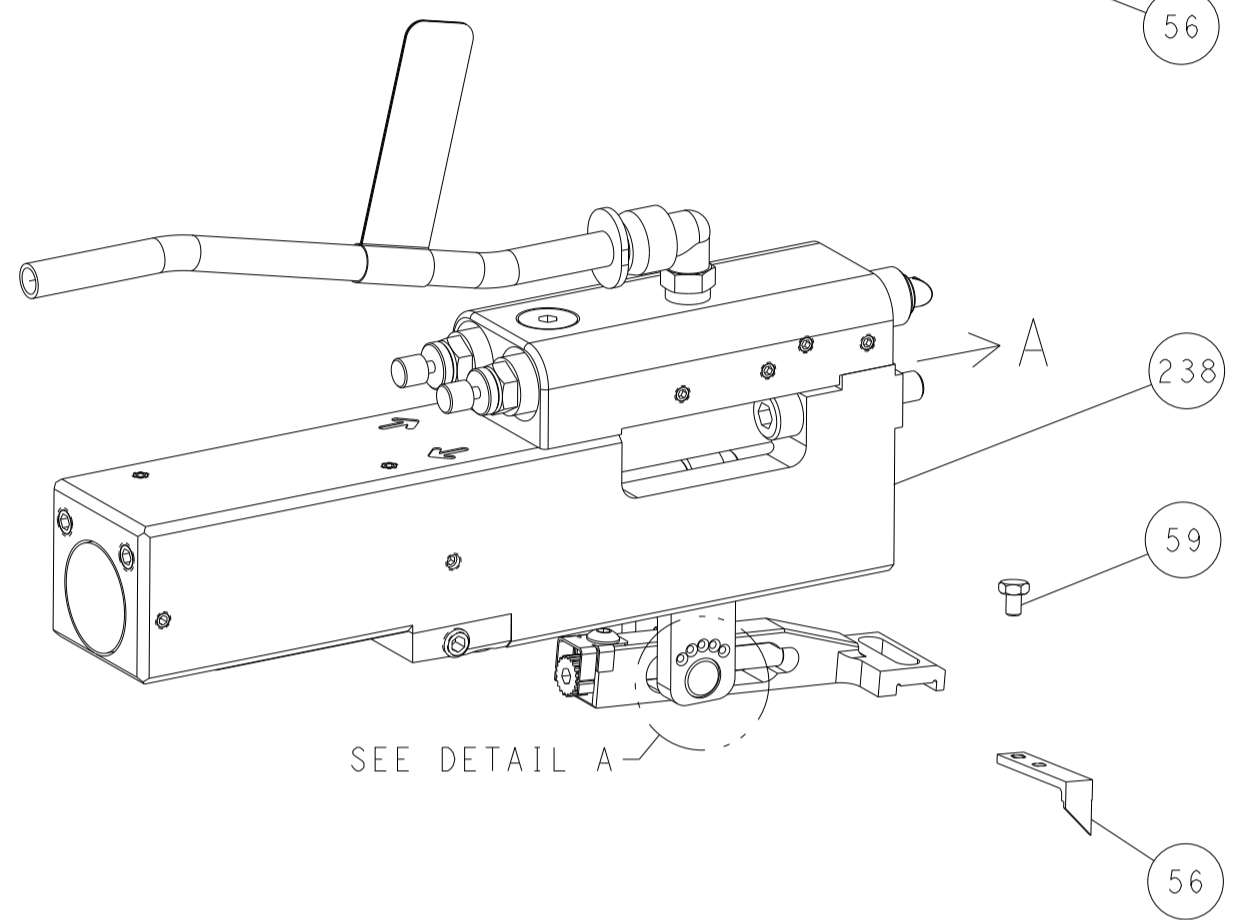
DIMENSIONS: mm	TOLERANCES UNLESS OTHERWISE SPECIFIED:	OWN: H. HUANG 03DEC2012	CHK: S.XI 03DEC2012	APP'D: S.XI 03DEC2012	NAME: Ocean Side Feed Applicator
0 PLC ±	1 PLC ±	2 PLC ±	3 PLC ±	4 PLC ±	ANGLES ±
MATERIAL:	FINISH:	WEIGHT:	SCALE: A1 00779	CAGE CODE: C=2151559	DRAWING NO: 2151559
Customer Accessible Production Drawing			SHEET 1 OF 4	REV F1	

LOC	DIST	REV	DATE	BY	APPV
A	66				

FEED TYPE MECHANICAL



PNEUMATIC

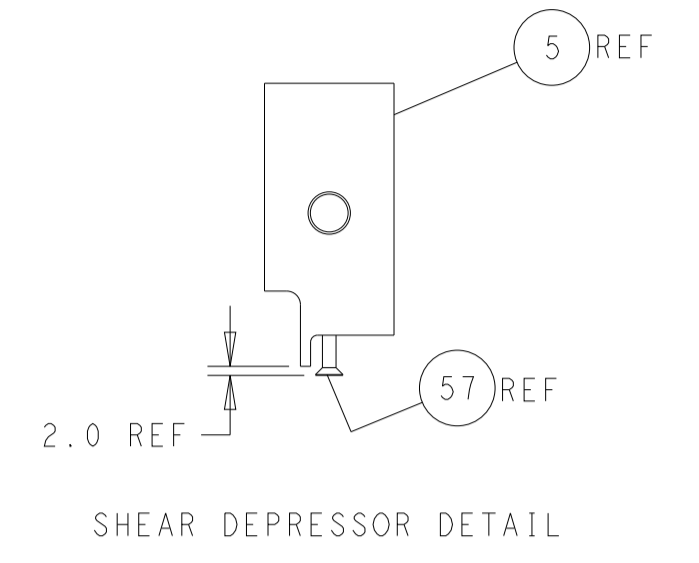
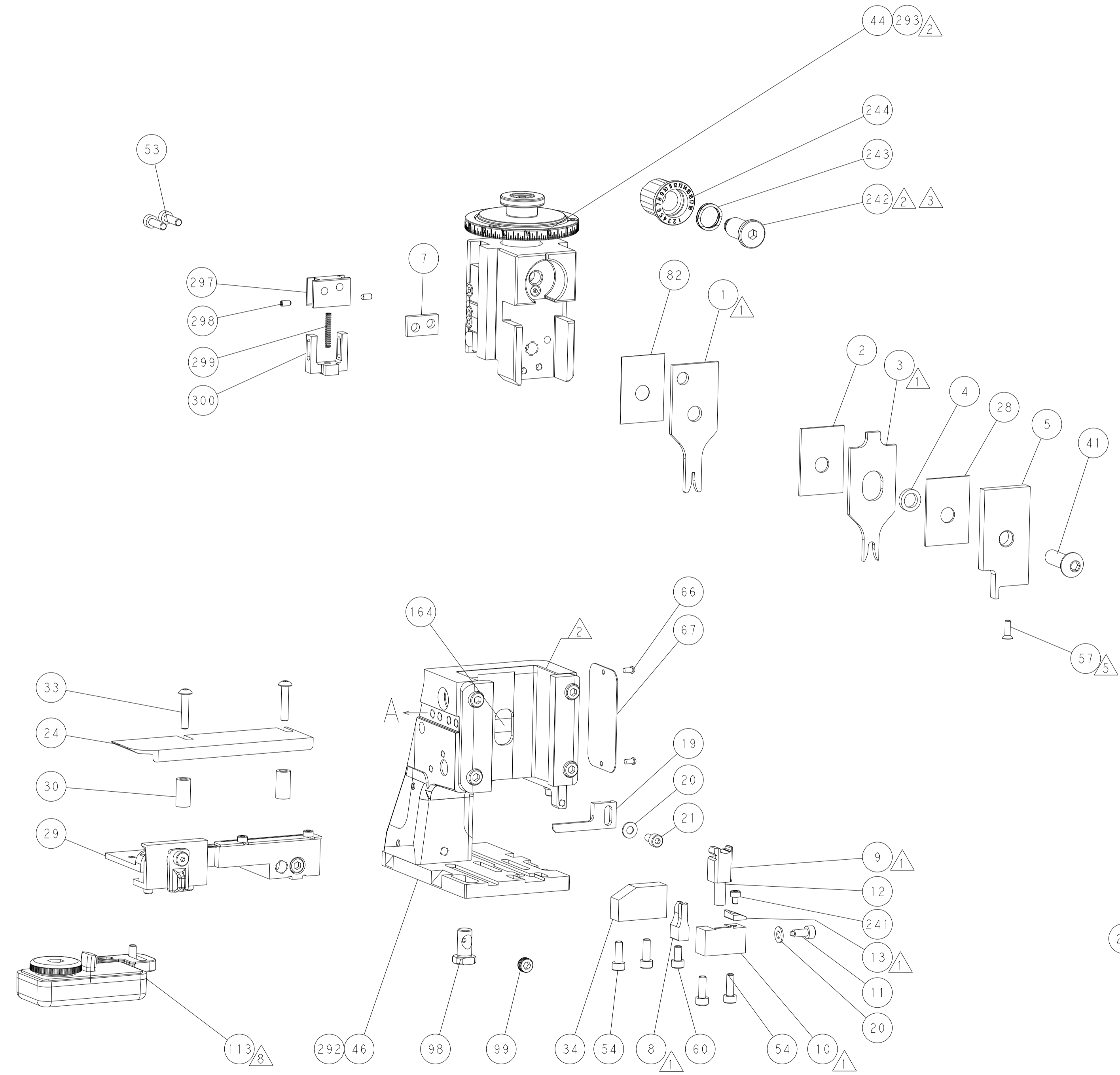


FEED SPRING SETTING POSITION (SHOWN FROM REAR SIDE)

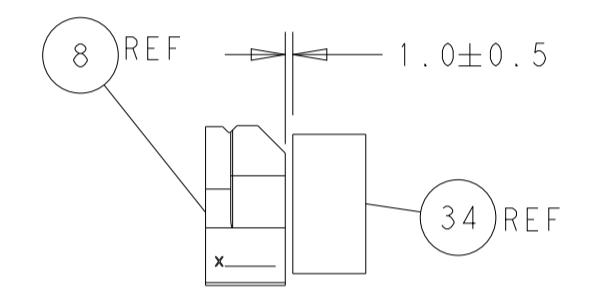


DETAIL A

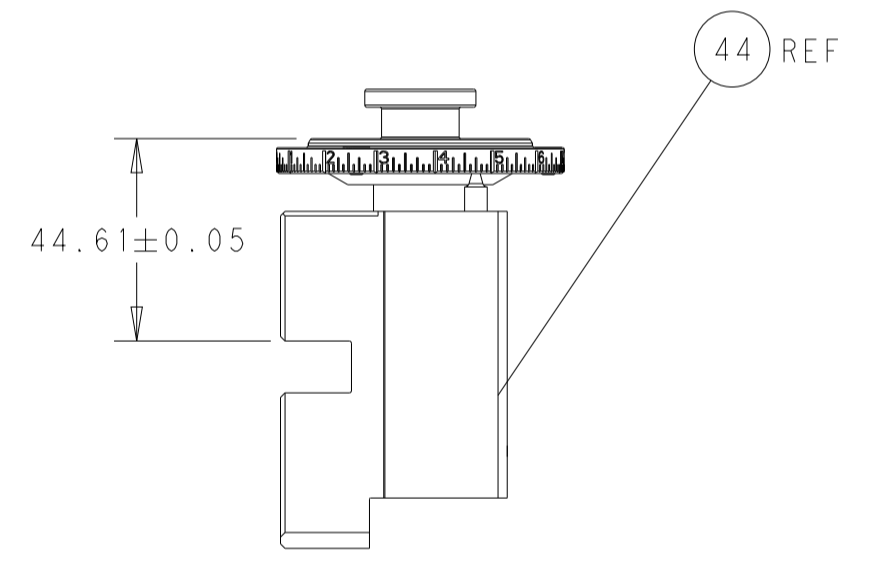
CAM POSITIONS



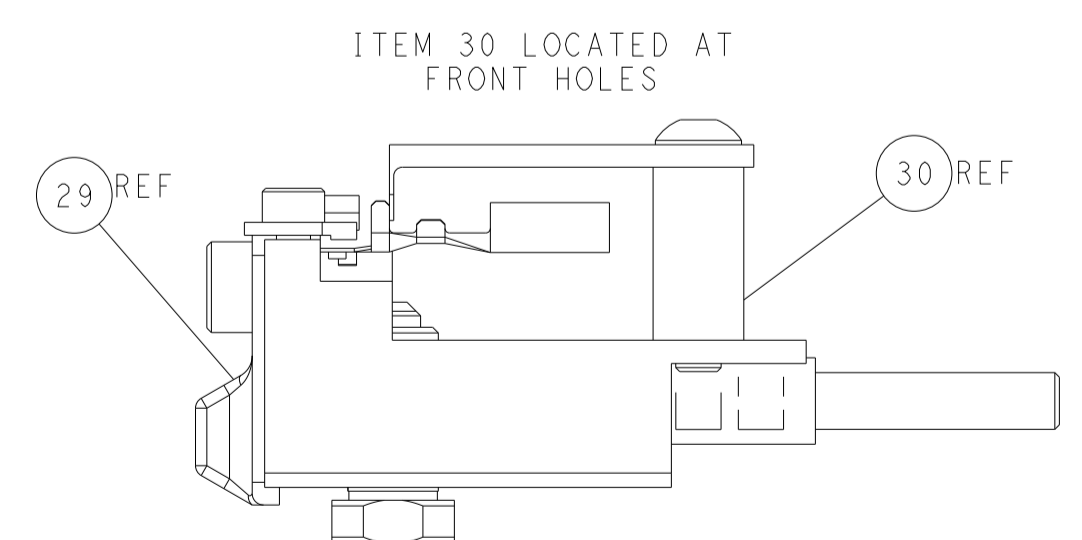
SHEAR DEPRESSOR DETAIL



TERMINAL SUPPORT LOCATION



RAM SET-UP



FEED TRACK POSITION GUIDE BY INSULATION BARREL

ATLANTIC VERSION
 Shown on sheets 1 of 4 & 2 of 4
 (Pacific version shown on sheets 3 of 4 & 4 of 4)

DIMENSIONS:		TOLERANCES UNLESS OTHERWISE SPECIFIED:		DWG		TE Connectivity	
mm	0 PLC	±		CHK	H. HUANG	03DEC2012	Harrisburg, PA 17105-3608
	1 PLC	±		APPV	S. XI	03DEC2012	
	2 PLC	±		PRODUCT SPEC			
	3 PLC	±		APPLICATION SPEC			
	4 PLC	±		WEIGHT			
	ANGLES	±		MATERIAL			
	FINISH			Customer Accessible Production Drawing			

PART NUMBER	REVISION	DESCRIPTION	FEED TYPE
2-2151559-1	F	FINE CRIMP HEIGHT ADJUST	MECHANICAL
2-2151559-2	F	FINE CRIMP HEIGHT ADJUST	PNEUMATIC
7-2151559-7	A	CRIMP TOOLING KIT	-

PACIFIC VERSION TERMINATOR
 INTERFACE ADAPTER



APPLICATOR DATA		
CRIMP	SIZE	TYPE
WIRE	1.57 mm [.062]	F
INSUL	3.94 mm [.155]	O

APPLICATOR INSTRUCTIONS
 408-35042

TERMINAL DATA: TE TERMINAL		TE CRIMP SPECIFICATION	
TERMINAL NAME: AMP MCP 2.8K FLAT TYPE RECEPTACLE			
WIRE STRIP LENGTH	TERMINAL INSULATION DIAMETER RANGE		
3.70-4.30 mm [.146-.169 IN]	Ø1.20-1.40 mm [.047-.055 IN]		
TERMINAL APPLICATION SPECIFICATION	(A)114-18148	-	-
	(B)114-18144-0	-	-
TERMINALS APPLIED			
TE TERMINAL	TE TERMINAL	TE SEAL	TE SEAL
(A) 1-968882-1	(A) 1-968882-3	828904-1	828904-3
(A) 1-968882-2	(B) 967541-1	828904-2	

TERMINAL DATA: TE TERMINAL		TE CRIMP SPECIFICATION	
TERMINAL NAME: AMP MCP 2.8K FLAT TYPE RECEPTACLE			
WIRE STRIP LENGTH	TERMINAL INSULATION DIAMETER RANGE		
3.70-4.30 mm [.146-.169 IN]	Ø1.20-1.40 mm [.047-.055 IN]		
TERMINAL APPLICATION SPECIFICATION	114-18148-PSA	-	-
		-	-
TERMINALS APPLIED			
TE TERMINAL	TE TERMINAL	TE SEAL	TE SEAL
1-968882-1	1-968882-3	828904-1	828904-3
1-968882-2		828904-2	

WIRE SIZE	CRIMP HEIGHT mm [INCH]	CRIMP HEIGHT REFERENCE SETTING
0.35mm2	1.08+/-0.03 [.043+/-0.001]	6.3
0.30mm2	1.01+/-0.03 [.040+/-0.001]	7.1
22 AWG	0.97+/-0.05 [.038+/-0.002]	7.6
24 AWG	0.92+/-0.03 [.036+/-0.001]	8.1

WIRE SIZE	CRIMP HEIGHT mm [INCH]	CRIMP HEIGHT REFERENCE SETTING
0.50mm2	1.14+/-0.03 [.045+/-0.001]	5.7
0.35mm2	1.08+/-0.03 [.043+/-0.001]	6.3

LOC		DIST		REVISIONS			
A	66	P	LTN	DESCRIPTION	DATE	OWN	APVD
-	-	-	-	SEE SHEET 1	-	-	-
-	1	1	1803945-4	TONKER			300
-	1	1	22278-9	SPRING, COMPRESSION			299
-	2	2	4-18032-3	SCR, SET, FLT PNT, M3 X 6.0			298
-	1	1	1803944-1	SPACER, TONKER			297
-	1	1	2119082-3	CAM, SNAIL, INSULATION ADJUSTMENT			244
-	1	1	2079764-1	WASHER, WAVE SPRING, CREST-TO-CREST			243
-	1	1	2119083-1	RETAINER, INSULATION DIAL			242
-	1	1	7-18023-7	SCR, SKT HD CAP M3 X 4.0			241
-	-	-	2119580-1	MECHANICAL FEED ASSEMBLY			239
-	1	-	2844940-1	AIR FEED MODULE			238
-	REF	REF	994970-2	COUNTER, MAGNETIC			164
-	1	-	2119641-2	FEED CAM, AIR FEED			151
-	1	1	2168083-8	SCR, SKT HD CAP, RoHS, M4 X 16			144
-	4	4	2168083-9	SCR, SKT HD CAP, RoHS, M4 X 20			143
-	-	-	2119653-2	FEED CAM, POST FEED			142
-	1	1	1-1803583-0	APPLICATOR BASIC ASSEMBLY, SF			141
-	1	1	1803516-1	RAM ASSEMBLY, SF PACIFIC			140
-	1	1	2119955-1	ASSY, LUBRICATOR, SIDE FEED			113
-	1	1	2844908-1	SCREW, LOCKING			99
-	1	1	2844907-1	POST, LOCKING			98
-	1	1	455888-4	SPACER, CRIMPER			82
-	1	1	1803607-3	DOCUMENTATION PACKAGE			71
-	1	1	2119740-1	TAG, IDENTIFICATION			67
-	2	2	2168078-1	SCREW, DRIVE, RH, RoHS, 2 x .188			66
-	1	1	5-18022-5	SCR, HEX HD CAP, M4 X 6.0			59
-	1	1	985575-3	SCR, FLT SKT HD CAP M3 X 10.0			57
-	1	1	1338685-1	PAWL, FEED			56
-	2	2	2-2168083-5	SCR, SKT HD CAP, RoHS, M4 X 14			53
-	1	2	18023-9	SCR, SKT HD CAP M4 X 6.0			49
-	-	-	2119652-1	FEED CAM, PRE FEED			48
-	1	1	1803602-1	SCR, BHSC, RoHS (M8 X 25)			41
-	1	1	1-1752356-7	SUPPORT, TERMINAL			34
-	2	2	2079383-5	SCR, BHSC, RoHS (M4 X 20)			33
-	2	2	3-2844962-0	SPACER, CYLINDRICAL, STRIP GUIDE			30
-	1	1	2844992-2	ASSEMBLY, STRIP GUIDE			29
-	1	1	1-455888-0	SPACER, CRIMPER			28
-	1	1	1320928-2	STRIP GUIDE			24
-	1	1	2168083-2	SCR, SKT HD CAP, RoHS, M4 X 8.0			21
-	2	2	1-18028-2	WASHER, FLAT, REG M4			20
-	1	1	2119533-1	STRIPPER, SIDE FEED			19
-	1	1	2119806-1	INSERT, SHEAR			13
-	1	1	3-22280-3	SPRING, COMPRESSION			12
-	1	1	1-356885-4	STOP, SHEAR			11
-	1	1	2119805-1	SHEAR HOLDER, FRONT			10
-	1	1	318707-1	FLOATING SHEAR, FRONT			9
-	1	1	1-1333202-5	ANVIL, COMBINATION			8
-	1	1	240641-5	SPACER			7
-	-	-	-	-			6
-	1	1	2119781-1	DEPRESSOR, SHEAR			5
-	1	1	238011-4	BLOCK, CRIMPER SPACER			4
-	1	1	2-2119784-9	CRIMPER, INSULATION O PREMIUM			3
-	1	1	1-455888-3	SPACER, CRIMPER			2
-	1	1	1-456403-3	CRIMPER, WIRE PREMIUM			1

- 1 RECOMMENDED SPARE PARTS
- 2 REFER TO SUPPLIED INSTRUCTION SHEET FOR CLEANING, LUBRICATION AND STORAGE OF APPLICATOR.
- 3 APPLY PART NUMBER 2-23419-6 LOCTITE TO THREADS OF ITEM 242.
- 4 CRIMP HEIGHT REFERENCE SETTING WAS THE SETTING USED WHEN THE APPLICATOR WAS QUALIFIED AT THE FACTORY. ADJUSTMENT MAY BE NECESSARY WHEN RUNNING APPLICATOR IN THE FIELD.
- 5 APPLY TORO-SEAL IN ALLEN SOCKET TO FILL HOLE AFTER FLAT HD HAS BEEN ADJUSTED TO CORRECT HEIGHT AT QUALIFICATION. APPLY #1-23419-5 LOC-TITE TO THREADS.
- 6. UNLESS SPECIFIED OTHERWISE TORQUE VALUES SHALL BE USED PER DOCUMENT, 101-35000.
- 7 APPLICATION SPECIFICATION 114-18148-PSA IS RESTRICTED TO PEUGEOT CITROËN AND ITS HARNESS MAKERS.
- 8 TERMINAL LUBRICANT IS RECOMMENDED.
- 9 WIRE TYPES CAVS, AESSX-F.

***WARNING**
 ON INSTALLATION, SET WIRE DISC TO CRIMP HEIGHT REFERENCE SETTING FOR LARGEST WIRE SIZE. CRIMP HEIGHT REFERENCE SETTINGS GREATER THAN THE VALUE SHOWN MAY CAUSE DAMAGE TO THE CRIMP TOOLING. REFER TO THE INSTRUCTION SHEET FOR PROPER SETUP AND ADJUSTMENTS.

ENTRY LEVEL APPLICATOR		ITEM SUBSTITUTION LIST		
PART NUMBER	SAME AS	ITEM	ITEM DESCRIPTION	SUBSTITUTE PART NUMBER
8-2151559-1	2151559-1	1	WIRE CRIMPER	1-1803547-3
8-2151559-2	2151559-2	3	INSULATION CRIMPER	2-1803604-9
9-2151559-1	2-2151559-1	46	BASIC SUB -ASSEMBLY	1803940-9
9-2151559-2	2-2151559-2	141	BASIC SUB -ASSEMBLY	1-1803940-0
			LUBRICATOR	DELETE

PACIFIC VERSION
 Shown on sheets 3 of 4 & 4 of 4
 (Atlantic version shown on sheets 1 of 4 & 2 of 4)

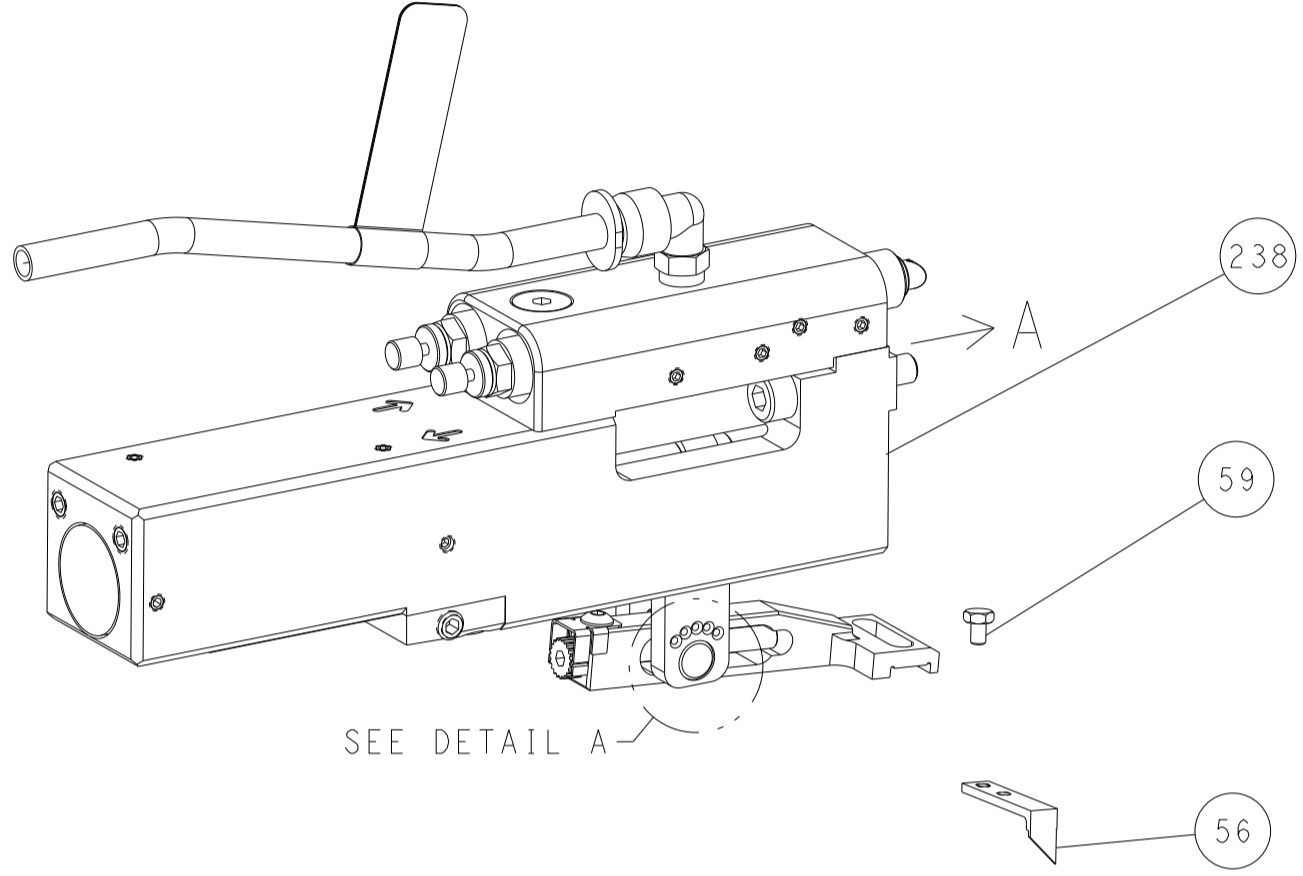
DIMENSIONS:		TOLERANCES UNLESS OTHERWISE SPECIFIED:		DWN H. HUANG 03DEC2012		CHK S.XI 03DEC2012	
mm	0 PLC ±	1 PLC ±	2 PLC ±	3 PLC ±	4 PLC ±	APVD S.XI 03DEC2012	
MATERIAL:		FINISH:		NAME		OCEAN SIDE FEED APPLICATOR	
				SIZE		CAGE CODE	
				A1 00779		C=2151559	
				WEIGHT		SCALE	
						1:2 SHEET 3 OF 4 REV F1	

LOC		DIST		REVISIONS			
A	66	P	LTM	DESCRIPTION	DATE	DWN	APVD
		-		SEE SHEET 1			

FEED TYPE MECHANICAL



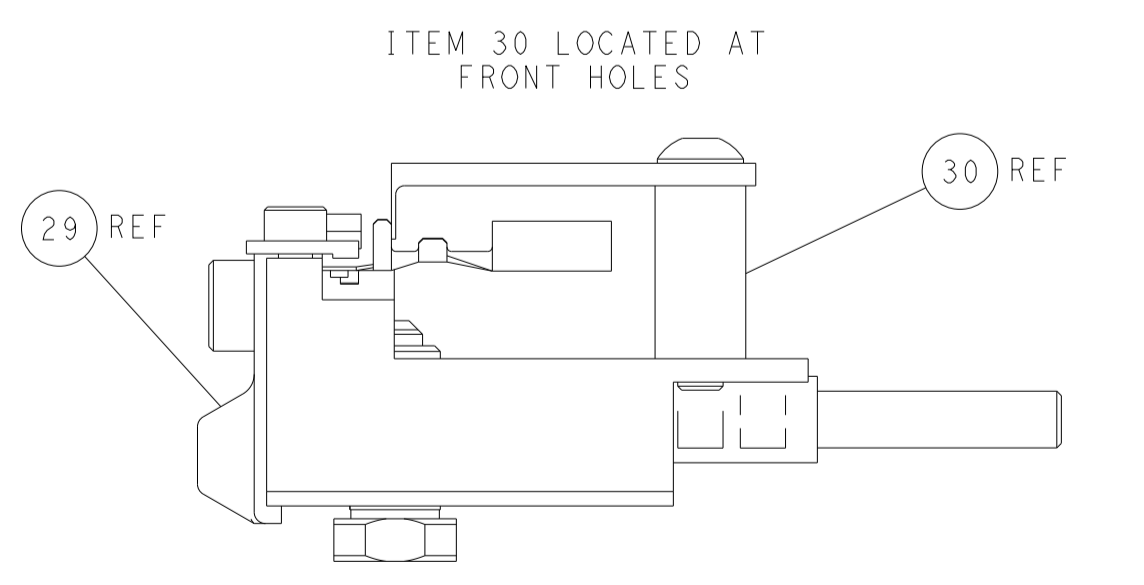
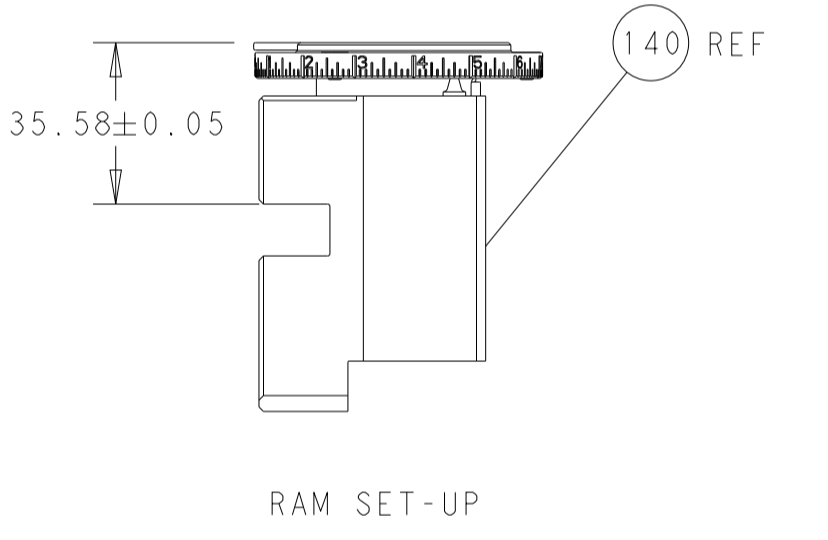
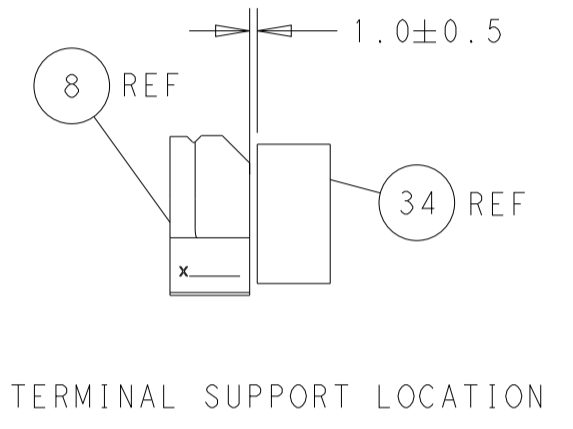
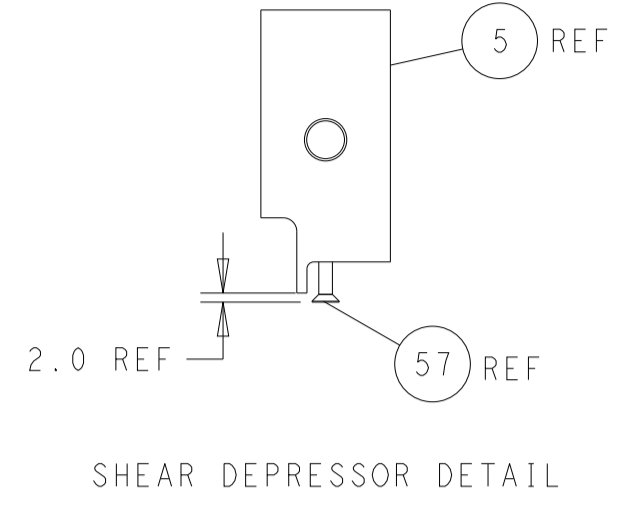
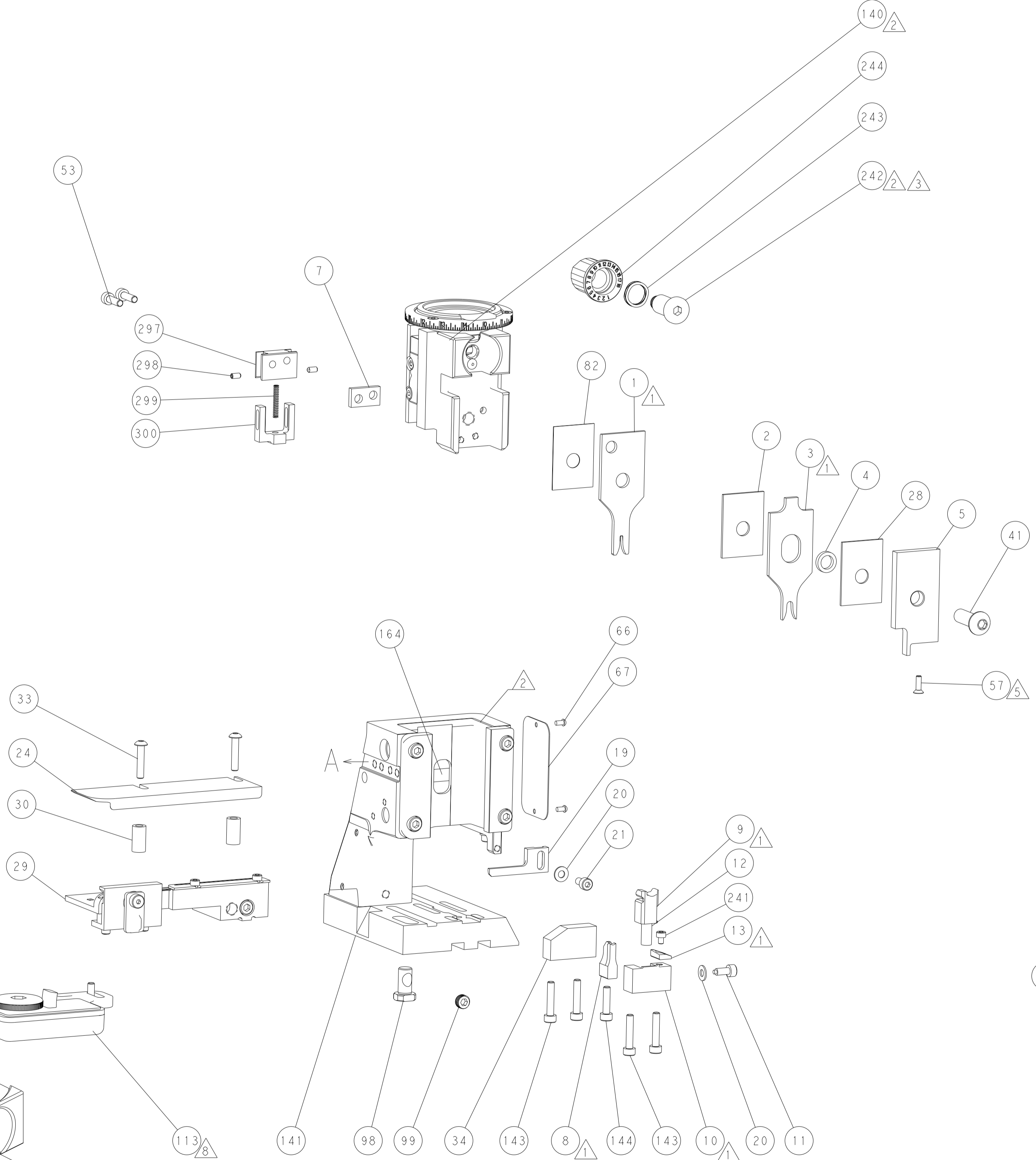
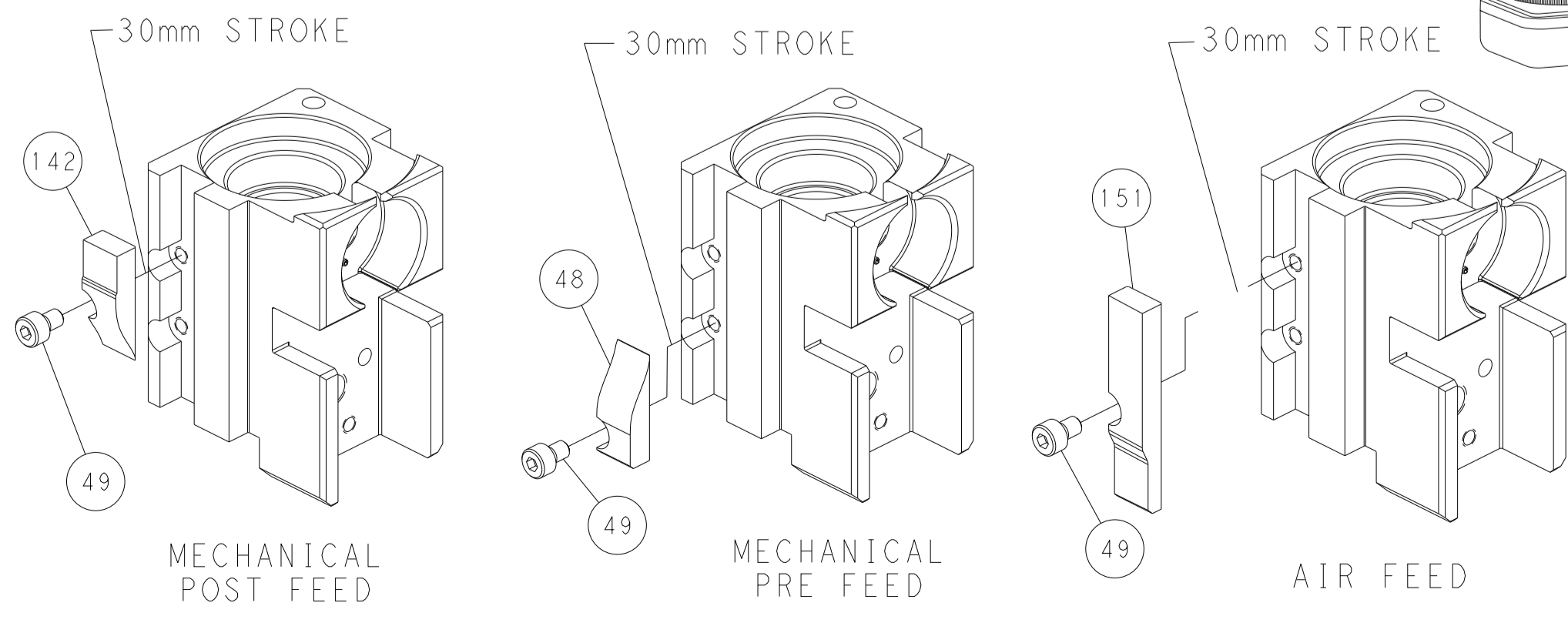
PNEUMATIC



FEED SPRING SETTING POSITION (SHOWN FROM REAR SIDE)



CAM POSITIONS



PACIFIC VERSION
 Shown on sheets 3 of 4 & 4 of 4
 (Atlantic version shown on sheets 1 of 4 & 2 of 4)

DIMENSIONS:		TOLERANCES UNLESS OTHERWISE SPECIFIED:		DWN H. HUANG 03DEC2012		TE Connectivity	
mm	0 PLC ±	1 PLC ±	2 PLC ±	3 PLC ±	4 PLC ±	5 PLC ±	Harrisburg, PA 17105-3608
	ANGLES	FINISH		CHK S.XI 03DEC2012	NAME		
				APVD S.XI 03DEC2012	PRODUCT SPEC		
					APPLICATION SPEC		
MATERIAL				SIZE	CAGE CODE	DRAWING NO	RESTRICTED TO
				A1	00779	©=2151559	
Customer Accessible Production Drawing				SCALE	1:2	SHEET	4 OF 4
				REV	F1		