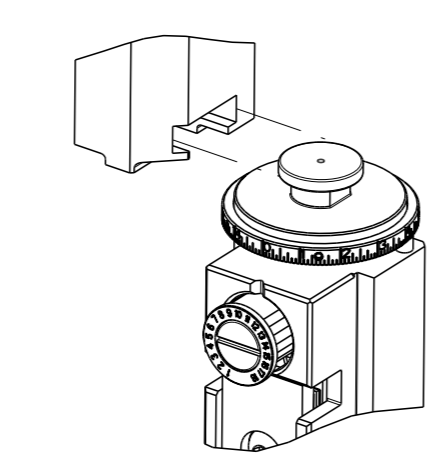


PART NUMBER	REVISION	DESCRIPTION	FEED TYPE
2266114-1	D	FINE CRIMP HEIGHT ADJUST	MECHANICAL
2266114-2	D	FINE CRIMP HEIGHT ADJUST	PNEUMATIC
5-2266114-1	D	SEAL STRIPPER CRIMPER TERMINATING UNIT	MECHANICAL
5-2266114-2	D	SEAL STRIPPER CRIMPER TERMINATING UNIT	PNEUMATIC
7-2266114-1	D	MECHANICAL AND CRIMP TOOLING KIT	MECHANICAL
7-2266114-2	D	PNEUMATIC AND CRIMP TOOLING KIT	PNEUMATIC
7-2266114-7	B	CRIMP TOOLING KIT	-
7-2266114-8	B	APPLICATOR CONVERSION KIT	-

ATLANTIC VERSION TERMINATOR INTERFACE ADAPTER



APPLICATOR DATA		
CRIMP	SIZE	TYPE
WIRE	2.62 mm [.103]	F
INSUL	2.29 mm [.090]	O

APPLICATOR INSTRUCTIONS
408-35042

APPLICATOR CONVERSION KITS	
PART NUMBER	INSULATION DIAMETER RANGE
7-2266112-8	∅3.15-3.56mm [.124-.140]
7-2266113-8	∅2.72-3.12mm [.107-.123]
7-2266114-8	∅2.29-2.69mm [.090-.106]
7-2266115-8	∅1.91-2.26mm [.075-.089]

TERMINAL DATA: DEUTSCH TERMINAL TE CRIMP SPECIFICATION			
TERMINAL NAME: STAMPED CONTACT PIN SIZE 16			
WIRE STRIP LENGTH	INSULATION DIAMETER RANGE	TERMINAL APPLICATION SPECIFICATION	TE CRIMP SPECIFICATION
4.44-5.72 mm [.175-.225 IN]	∅2.29-2.69 mm [.090-.106 IN]	114-151001	
TERMINALS APPLIED			
TE TERMINAL	DEUTSCH TERMINAL	TE TERMINAL	DEUTSCH TERMINAL
2113238-1	1060-16-1222	2113238-2	1060-16-1244
2113238-3	1060-16-1277		

TERMINAL DATA: DEUTSCH TERMINAL TE CRIMP SPECIFICATION			
TERMINAL NAME: STAMPED CONTACT SOCKET SIZE 16			
WIRE STRIP LENGTH	INSULATION DIAMETER RANGE	TERMINAL APPLICATION SPECIFICATION	TE CRIMP SPECIFICATION
4.44-5.72 mm [.175-.225 IN]	∅2.29-2.69 mm [.090-.106 IN]	114-151001	
TERMINALS APPLIED			
TE TERMINAL	DEUTSCH TERMINAL	TE TERMINAL	DEUTSCH TERMINAL
1949119-1	1062-16-1222	1949119-2	1062-16-1244
1949119-3	1062-16-1277	1949119-4	1062-16-1422
1949119-5	1062-16-1444	1949119-6	1062-16-1477

WIRE SIZE	CRIMP HEIGHT mm [INCH]	CRIMP HEIGHT REFERENCE SETTING
2.50mm2	1.73+0.03/-0.05 [.068+.001/-0.002]	5.4
14 AWG	1.65+0.03/-0.05 [.065+.001/-0.002]	6.1
2.00mm2	1.63+0.03/-0.05 [.064+.001/-0.002]	6.3
1.50mm2	1.50+0.03/-0.05 [.059+.001/-0.002]	7.6
16 AWG	1.47+0.03/-0.05 [.058+.001/-0.002]	7.9
1.00mm2	1.40+0.03/-0.05 [.055+.001/-0.002]	8.6

***WARNING**
ON INSTALLATION, SET WIRE DISC TO CRIMP HEIGHT REFERENCE SETTING FOR LARGEST WIRE SIZE. CRIMP HEIGHT REFERENCE SETTINGS GREATER THAN THE VALUE SHOWN MAY CAUSE DAMAGE TO THE CRIMP TOOLING. REFER TO THE INSTRUCTION SHEET FOR PROPER SETUP AND ADJUSTMENTS.

- 1. RECOMMENDED SPARE PARTS
- 2. REFER TO SUPPLIED INSTRUCTION SHEET FOR CLEANING, LUBRICATION AND STORAGE OF APPLICATOR.
- 3. APPLY PART NUMBER 2-23419-6 LOCTITE TO THREADS OF ITEM 242. APPLY PART NUMBER 1-23419-5 LOCTITE TO THREADS OF ITEM 180.
- 4. CRIMP HEIGHT REFERENCE SETTING WAS THE SETTING USED WHEN THE APPLICATOR WAS QUALIFIED AT THE FACTORY. ADJUSTMENT MAY BE NECESSARY WHEN RUNNING APPLICATOR IN THE FIELD.
- 5. TERMINAL LUBRICANT IS RECOMMENDED.
- 6. UNLESS SPECIFIED OTHERWISE TORQUE VALUES SHALL BE USED PER DOCUMENT, 101-35000.
- 7. SEE APPROPRIATE APPLICATOR LOG SHEETS FOR APPLIED TERMINALS, WIRE RANGE AND MEMORY CHIP.

LOC	DIST	REVISIONS			
A	66	#	DATE	BY	CHK
		B2	15-01-13	R. KNEPPER	
		B3	15-01-13	G. BAILEY	
		C	15-01-13	M. CLIFFORD	
		D	15-01-13		

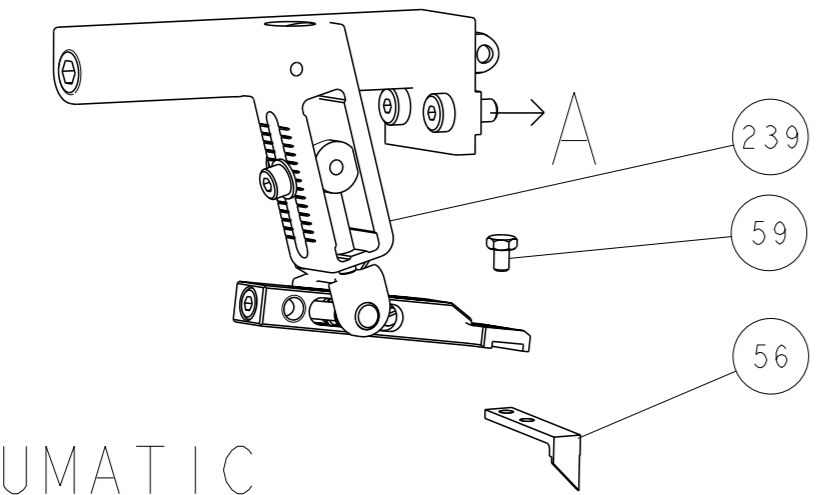
#	QTY	DESCRIPTION	DATE	BY	CHK	ITEM NO				
-	-	1803515-3				293				
-	-	2-1803583-1				292				
-	-	2119641-1				248				
-	-	2119082-9				244				
-	-	2079764-1				243				
-	-	2119083-1				242				
-	-	7-18023-7				241				
-	-	2119580-1				239				
-	-	2844940-1				238				
-	-	4-1722335-3				182				
-	-	1-5018030-0				181				
-	-	2-1752354-0				180				
-	-	993111-1				177				
-	-	5-22280-0				176				
-	-	1752353-3				175				
-	-	1901680-2				174				
-	-	994970-2				164				
-	-	2119955-1				113				
-	-	2844908-1				99				
-	-	2844907-1				98				
-	-	455888-4				82				
1	-	2266114				72				
-	-	1803607-3				71				
-	-	2119791-9				70				
-	-	2119740-1				67				
-	-	2168078-1				66				
-	-	2168083-2				60				
-	-	5-18022-5				59				
-	-	1338685-1				56				
-	-	2168083-3				54				
-	-	2168083-3				53				
-	-	5018030-1				52				
-	-	811242-5				51				
-	-	690753-2				50				
-	-	18023-9				49				
-	-	2119652-1				48				
-	-	2119653-1				47				
-	-	1803583-9				46				
-	-	1803515-1				44				
-	-	1803602-1				41				
-	-	2-1752356-0				34				
-	-	2079383-5				33				
-	-	2-2844962-8				30				
-	-	2844992-1				29				
-	-	1320928-6				24				
-	-	2168083-2				21				
-	-	1-18028-2				20				
-	-	2119533-1				19				
-	-	2119806-1				13				
-	-	3-22280-3				12				
-	-	1-356885-4				11				
-	-	2119805-1				10				
-	-	1803095-3				9				
1	1	1-1803293-0				8				
-	-	3-240641-8				7				
-	-	-				6				
-	-	1-2119757-0				5				
-	-	238011-9				4				
1	1	1803019-5				3				
-	-	455888-7				2				
1	1	4-1633713-2				1				
-78	-77	-72	-71	-52	-51	-2	-1	PART NO	DESCRIPTION	ITEM NO

ATLANTIC VERSION
Shown on sheets 1 of 4 & 2 of 4
(Pacific version shown on sheets 3 of 4 & 4 of 4)

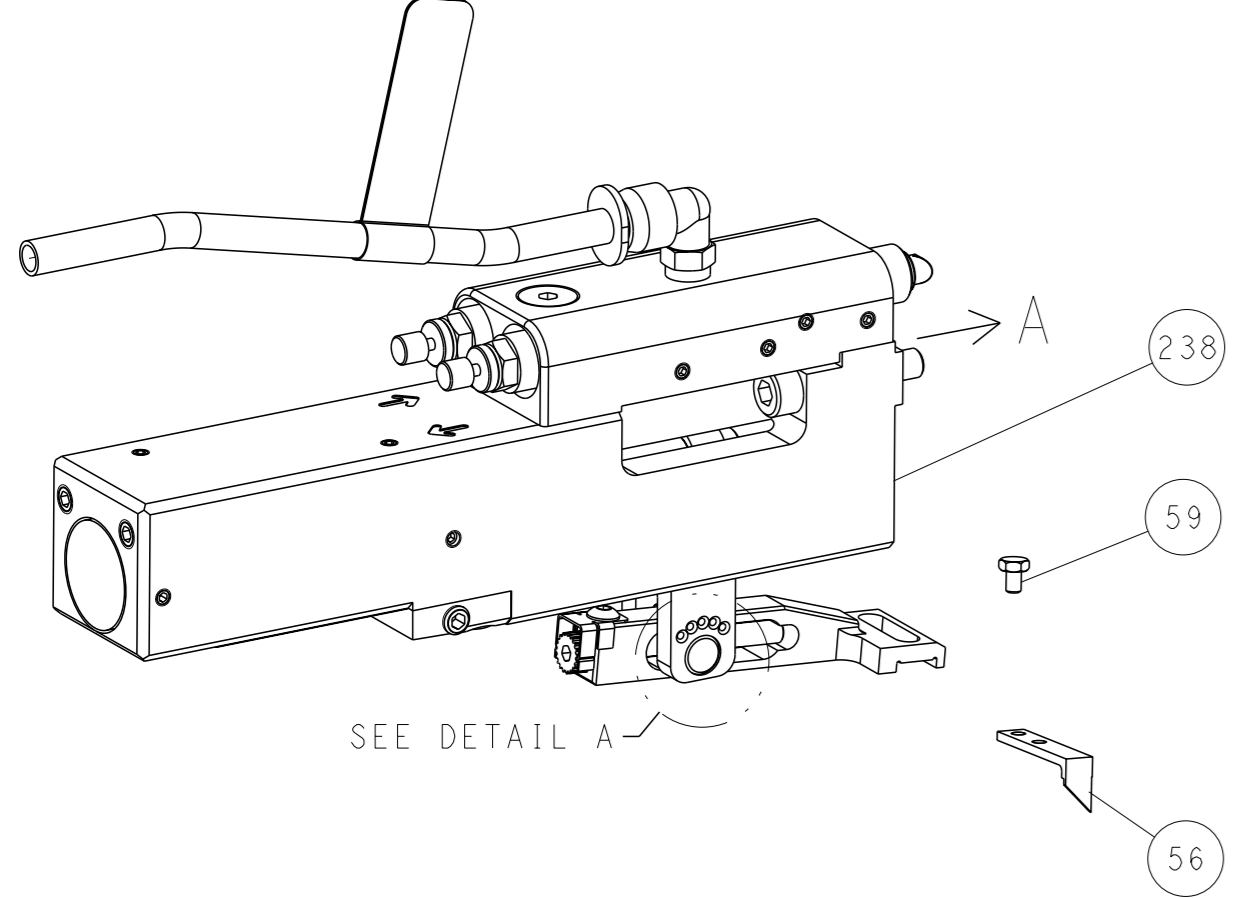
DIMENSIONS:	TOLERANCES UNLESS OTHERWISE SPECIFIED:	OWN	CHK	APVD	DATE	NAME	SIZE	CAGE CODE	DRAWING NO	RESTRICTED TO
mm	0 PLC ± 1 PLC ± 2 PLC ± 3 PLC ± 4 PLC ± ANGLES ±	R. KNEPPER	G. BAILEY	M. CLIFFORD	15-Oct-13	Ocean Side Feed Applicator	A1	00779	2266114	Customer Accessible Production Drawing

LOC	DIST	REVISIONS					
A	66	P	LYR	DESCRIPTION	DATE	OWN	APVD
		-		SEE SHEET 1			

FEED TYPE MECHANICAL



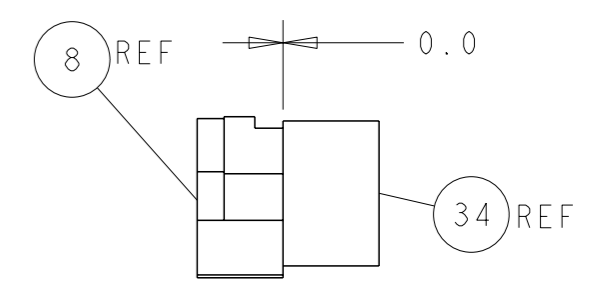
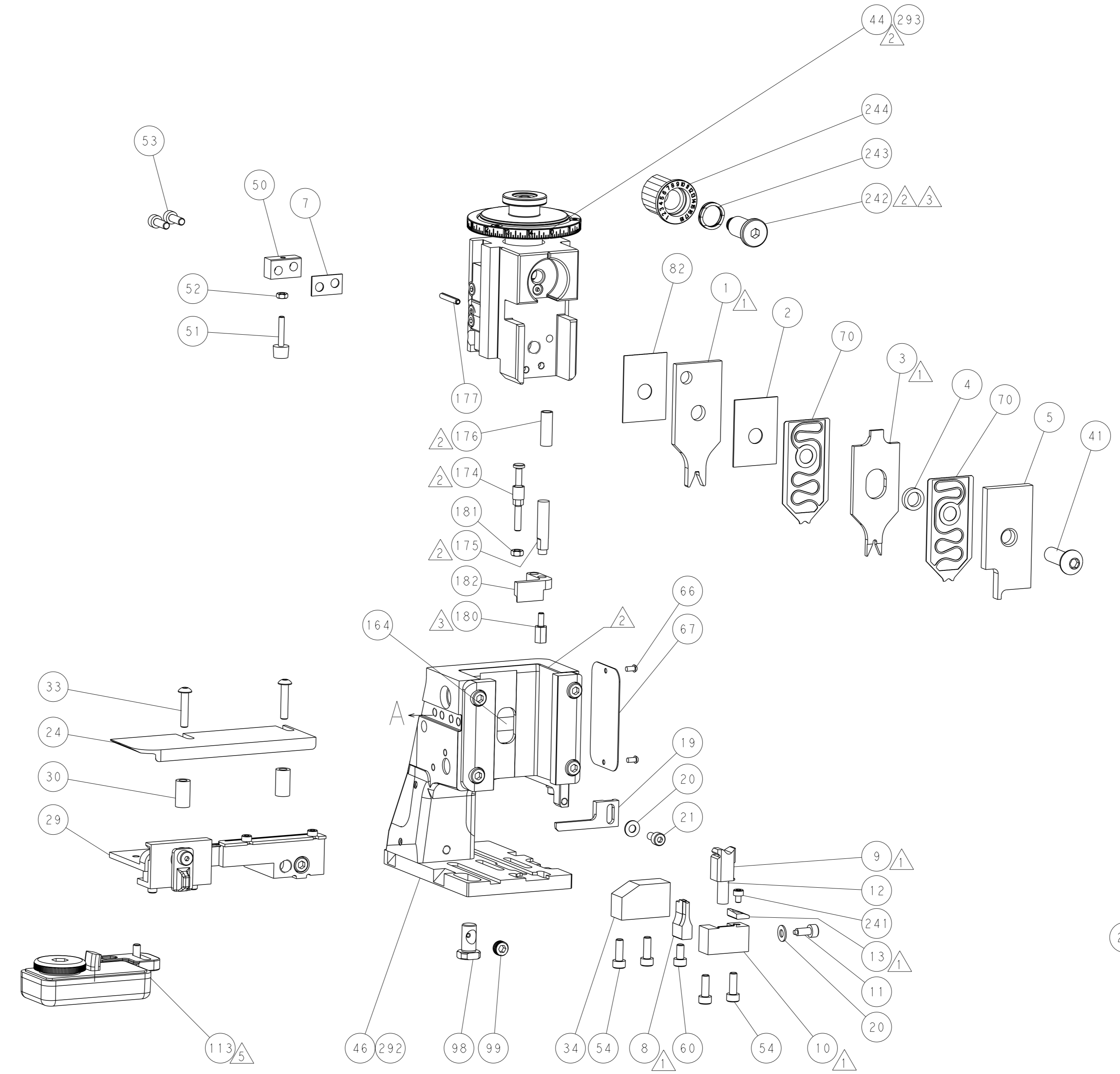
PNEUMATIC



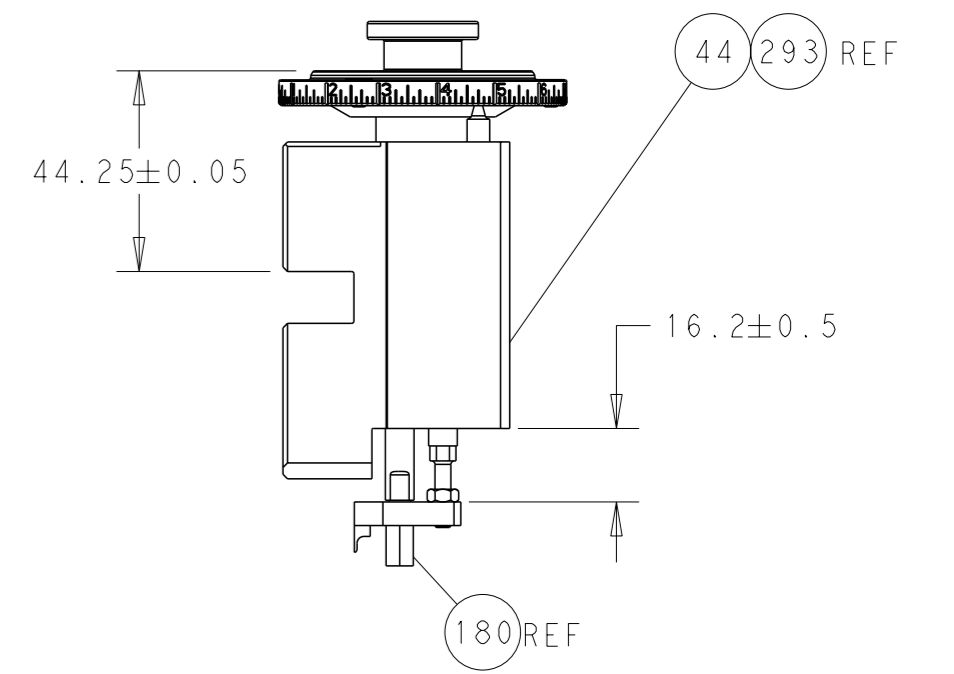
FEED SPRING SETTING POSITION (SHOWN FROM REAR SIDE)



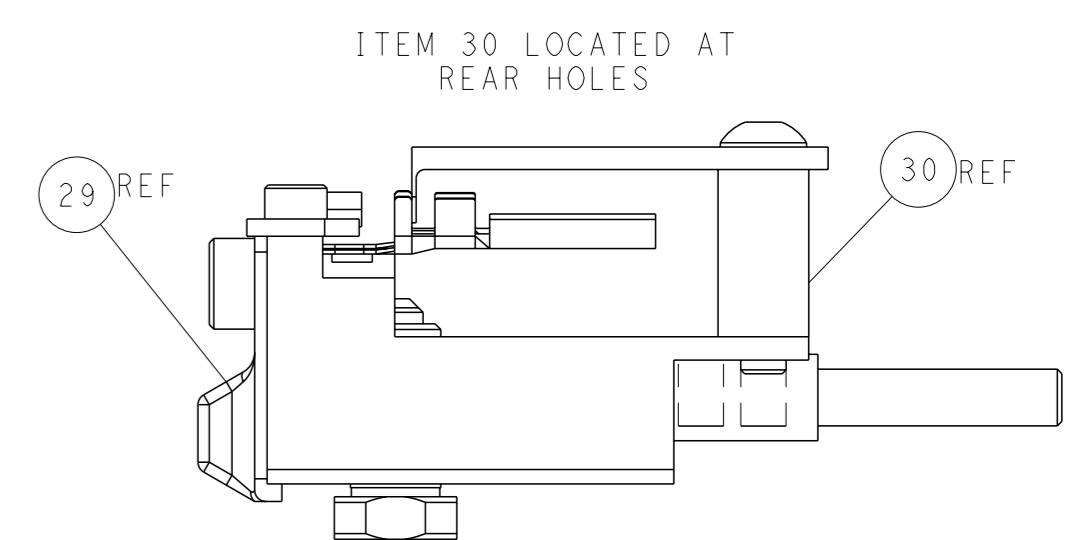
DETAIL A



TERMINAL SUPPORT LOCATION

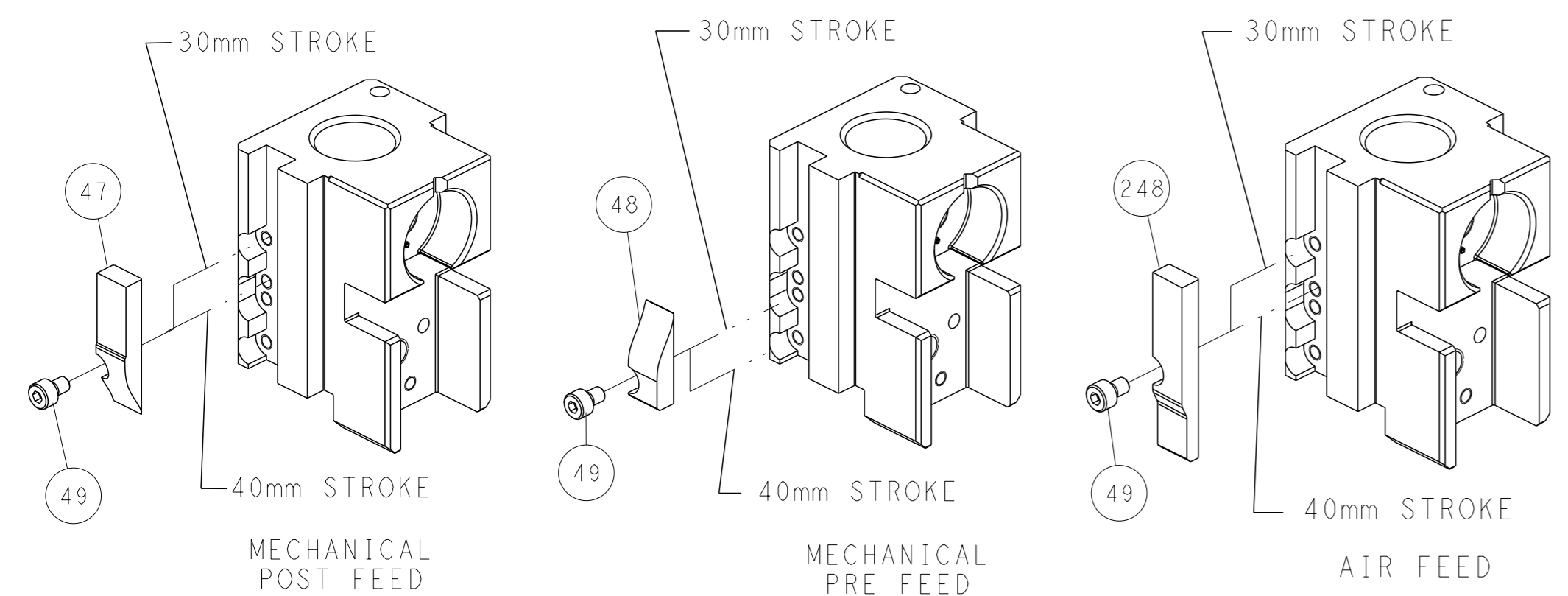


RAM AND HOLDDOWN SET-UP



FEED TRACK POSITION GUIDE BY INSULATION BARREL

CAM POSITIONS

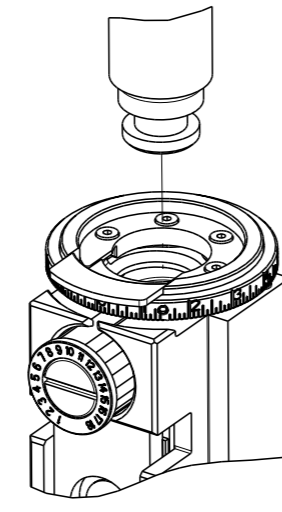


ATLANTIC VERSION
 Shown on sheets 1 of 4 & 2 of 4
 (Pacific version shown on sheets 3 of 4 & 4 of 4)

<small>THIS DRAWING IS A CONTROLLED DOCUMENT FROM TYCO ELECTRONICS CORPORATION. IT IS SUBJECT TO CHANGE AND THE CONTROL AND REVISIONS ORGANIZATION SHOULD BE CONTACTED FOR THE LATEST REVISION.</small>		OWN: R. KNEPPER CHK: G. BAILEY APVD: M. CLIFFORD PRODUCT SPEC: - APPLICATION SPEC: - WEIGHT: - MATERIAL: -	DATE: 15-Oct-13 DATE: 15-Oct-13 DATE: 15-Oct-13 NAME: Ocean Side Feed Applicator SIZE: A1 CAGE CODE: 00779 DRAWING NO: C=2266114 SCALE: 1:2 SHEET: 2 of 4 REV: D	TE Connectivity Harrisburg, PA 17105-3608
---	--	--	---	--

PART NUMBER	REVISION	DESCRIPTION	FEED TYPE
2-2266114-1	D	FINE CRIMP HEIGHT ADJUST	MECHANICAL
2-2266114-2	D	FINE CRIMP HEIGHT ADJUST	PNEUMATIC
7-2266114-7	B	CRIMP TOOLING KIT	-
7-2266114-8	B	APPLICATOR CONVERSION KIT	-

PACIFIC VERSION TERMINATOR
INTERFACE ADAPTER



APPLICATOR DATA		
CRIMP	SIZE	TYPE
WIRE	2.62 mm [.103]	F
INSUL	2.29 mm [.090]	O
APPLICATOR INSTRUCTIONS 408-35042		

APPLICATOR CONVERSION KITS	
PART NUMBER	INSULATION DIAMETER RANGE
7-2266112-8	Ø3.15-3.56mm [.124-.140]
7-2266113-8	Ø2.72-3.12mm [.107-.123]
7-2266114-8	Ø2.29-2.69mm [.090-.106]
7-2266115-8	Ø1.91-2.26mm [.075-.089]

TERMINAL DATA: DEUTSCH TERMINAL TE CRIMP SPECIFICATION			
TERMINAL NAME: STAMPED CONTACT PIN SIZE 16			
WIRE STRIP LENGTH	INSULATION DIAMETER RANGE		
4.44-5.72 mm [.175-.225 IN]	Ø2.29-2.69 mm [.090-.106 IN]		
TERMINAL APPLICATION SPECIFICATION	114-151001	-	-
TERMINALS APPLIED			
TE TERMINAL	DEUTSCH TERMINAL	TE TERMINAL	DEUTSCH TERMINAL
2113238-1	1060-16-1222	2113238-2	1060-16-1244
2113238-3	1060-16-1277		

TERMINAL DATA: DEUTSCH TERMINAL TE CRIMP SPECIFICATION			
TERMINAL NAME: STAMPED CONTACT SOCKET SIZE 16			
WIRE STRIP LENGTH	INSULATION DIAMETER RANGE		
4.44-5.72 mm [.175-.225 IN]	Ø2.29-2.69 mm [.090-.106 IN]		
TERMINAL APPLICATION SPECIFICATION	114-151001	-	-
TERMINALS APPLIED			
TE TERMINAL	DEUTSCH TERMINAL	TE TERMINAL	DEUTSCH TERMINAL
1949119-1	1062-16-1222	1949119-2	1062-16-1244
1949119-3	1062-16-1277	1949119-4	1062-16-1422
1949119-5	1062-16-1444	1949119-6	1062-16-1477

WIRE SIZE	CRIMP HEIGHT mm [INCH]	CRIMP HEIGHT REFERENCE SETTING
2.50mm2	1.73+0.03/-0.05 [.068+.001/-0.002]	5.4
14 AWG	1.65+0.03/-0.05 [.065+.001/-0.002]	6.1
2.00mm2	1.63+0.03/-0.05 [.064+.001/-0.002]	6.3
1.50mm2	1.50+0.03/-0.05 [.059+.001/-0.002]	7.6
16 AWG	1.47+0.03/-0.05 [.058+.001/-0.002]	7.9
1.00mm2	1.40+0.03/-0.05 [.055+.001/-0.002]	8.6



- RECOMMENDED SPARE PARTS
- REFER TO SUPPLIED INSTRUCTION SHEET FOR CLEANING, LUBRICATION AND STORAGE OF APPLICATOR.
- APPLY PART NUMBER 2-23419-6 LOCTITE TO THREADS OF ITEM 242.
- CRIMP HEIGHT REFERENCE SETTING WAS THE SETTING USED WHEN THE APPLICATOR WAS QUALIFIED AT THE FACTORY. ADJUSTMENT MAY BE NECESSARY WHEN RUNNING APPLICATOR IN THE FIELD.
- TERMINAL LUBRICANT IS RECOMMENDED.
- UNLESS SPECIFIED OTHERWISE TORQUE VALUES SHALL BE USED PER DOCUMENT, 101-35000.
- SEE APPROPRIATE APPLICATOR LOG SHEETS FOR APPLIED TERMINALS, WIRE RANGE AND MEMORY CHIP.

***WARNING**
ON INSTALLATION, SET WIRE DISC TO CRIMP HEIGHT REFERENCE SETTING FOR LARGEST WIRE SIZE. CRIMP HEIGHT REFERENCE SETTINGS GREATER THAN THE VALUE SHOWN MAY CAUSE DAMAGE TO THE CRIMP TOOLING. REFER TO THE INSTRUCTION SHEET FOR PROPER SETUP AND ADJUSTMENTS.

PACIFIC VERSION
Shown on sheets 3 of 4 & 4 of 4
(Atlantic version shown on sheets 1 of 4 & 2 of 4)

LOC	DIST	REVISIONS					
		P	LY#	DESCRIPTION	DATE	OWN	APVD
A	66	-	-	SEE SHEET 1	-	-	-

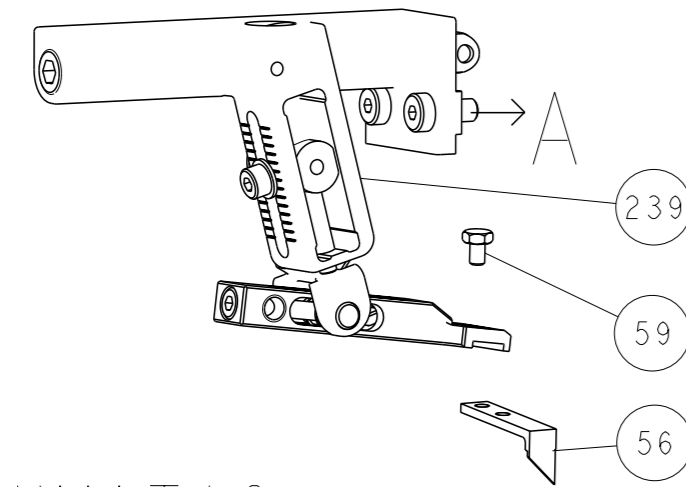
-	-	1	1	2119082-9	CAM, SNAIL, INSULATION ADJUSTMENT	244		
-	-	1	1	2079764-1	WASHER, WAVE SPRING, CREST-TO-CREST	243		
-	-	1	1	2119083-1	RETAINER, INSULATION DIAL	242		
-	-	1	1	7-18023-7	SCR, SKT HD CAP M3 X 4.0	241		
-	-	-	1	2119580-1	MECHANICAL FEED ASSEMBLY	239		
-	-	1	-	2844940-1	AIR FEED MODULE	238		
-	-	REF	REF	994970-2	COUNTER, MAGNETIC	164		
-	-	1	-	2119641-2	FEED CAM, AIR FEED	151		
-	-	1	1	2168083-8	SCR, SKT HD CAP, RoHS, M4 X 16	144		
-	-	4	4	2168083-9	SCR, SKT HD CAP, RoHS, M4 X 20	143		
-	-	-	1	2119653-2	FEED CAM, POST FEED	142		
-	-	1	1	1-1803583-0	APPLICATOR BASIC ASSEMBLY, SF	141		
-	-	1	1	1803516-1	RAM ASSEMBLY, SF PACIFIC	140		
-	-	1	1	2119955-1	ASSY, LUBRICATOR, SIDE FEED	113		
-	-	1	1	2844908-1	SCREW, LOCKING	99		
-	-	1	1	2844907-1	POST, LOCKING	98		
-	-	1	1	455888-4	SPACER, CRIMPER	82		
1	-	-	-	2266114	PRINT, APPLICATOR LOG SHEET	72		
-	-	1	1	1803607-3	DOCUMENTATION PACKAGE	71		
-	-	2	2	2119791-9	DEPRESSOR, WIRE	70		
-	-	1	1	2119740-1	TAG, IDENTIFICATION	67		
-	-	2	2	2168078-1	SCREW, DRIVE, RH, RoHS, 2 x .188	66		
-	-	1	1	5-18022-5	SCR, HEX HD CAP, M4 X 6.0	59		
-	-	1	1	1338685-1	PAWL, FEED	56		
-	-	2	2	2168083-3	SCR, SKT HD CAP, RoHS, M4 X 12.0	53		
-	-	1	1	5018030-1	NUT, HEX, REG, RoHS, M3	52		
-	-	1	1	811242-5	BUMPER, HOLD DOWN	51		
-	-	1	1	690753-2	SPACER, TONKER	50		
-	-	1	2	18023-9	SCR, SKT HD CAP M4 X 6.0	49		
-	-	-	1	2119652-1	FEED CAM, PRE FEED	48		
-	-	1	1	1803602-1	SCR, BHSC, RoHS (M8 X 25)	41		
-	-	1	1	2-1752356-0	SUPPORT, TERMINAL	34		
-	-	2	2	2079383-5	SCR, BHSC, RoHS (M4 X 20)	33		
-	-	2	2	2-2844962-8	SPACER, CYLINDRICAL, STRIP GUIDE	30		
-	-	1	1	2844992-1	ASSEMBLY, STRIP GUIDE	29		
-	-	1	1	1320928-6	STRIP GUIDE	24		
-	-	1	1	2168083-2	SCR, SKT HD CAP, RoHS, M4 X 8.0	21		
-	-	2	2	1-18028-2	WASHER, FLAT, REG M4	20		
-	-	1	1	2119533-1	STRIPPER, SIDE FEED	19		
-	-	1	1	2119806-1	INSERT, SHEAR	13		
-	-	1	1	3-22280-3	SPRING, COMPRESSION	12		
-	-	1	1	1-356885-4	STOP, SHEAR	11		
-	-	1	1	2119805-1	SHEAR HOLDER, FRONT	10		
-	-	1	1	1803095-3	FLOATING SHEAR, FRONT	9		
1	1	1	1	1-1803293-0	ANVIL, COMBINATION DEUTSCH STYLE	8		
-	-	1	1	3-240641-8	SPACER	7		
-	-	-	-	-	-	6		
-	-	1	1	1-2119757-0	DEPRESSOR, SHEAR	5		
-	-	1	1	238011-9	BLOCK, CRIMPER SPACER	4		
1	1	1	1	1803019-5	CRIMPER, INSULATION O	3		
-	-	1	1	455888-7	SPACER, CRIMPER	2		
-	-	1	1	4-1633713-2	CRIMPER, WIRE PREMIUM	1		
-	-	78	-77	-22	-21	PART NO	DESCRIPTION	ITEM NO

DIMENSIONS:		TOLERANCES UNLESS OTHERWISE SPECIFIED:		APPLICATOR DATA	
mm	0 PLC ±	1 PLC ±	2 PLC ±	3 PLC ±	4 PLC ±
	ANGLES	FINISH			
MATERIAL		WEIGHT			

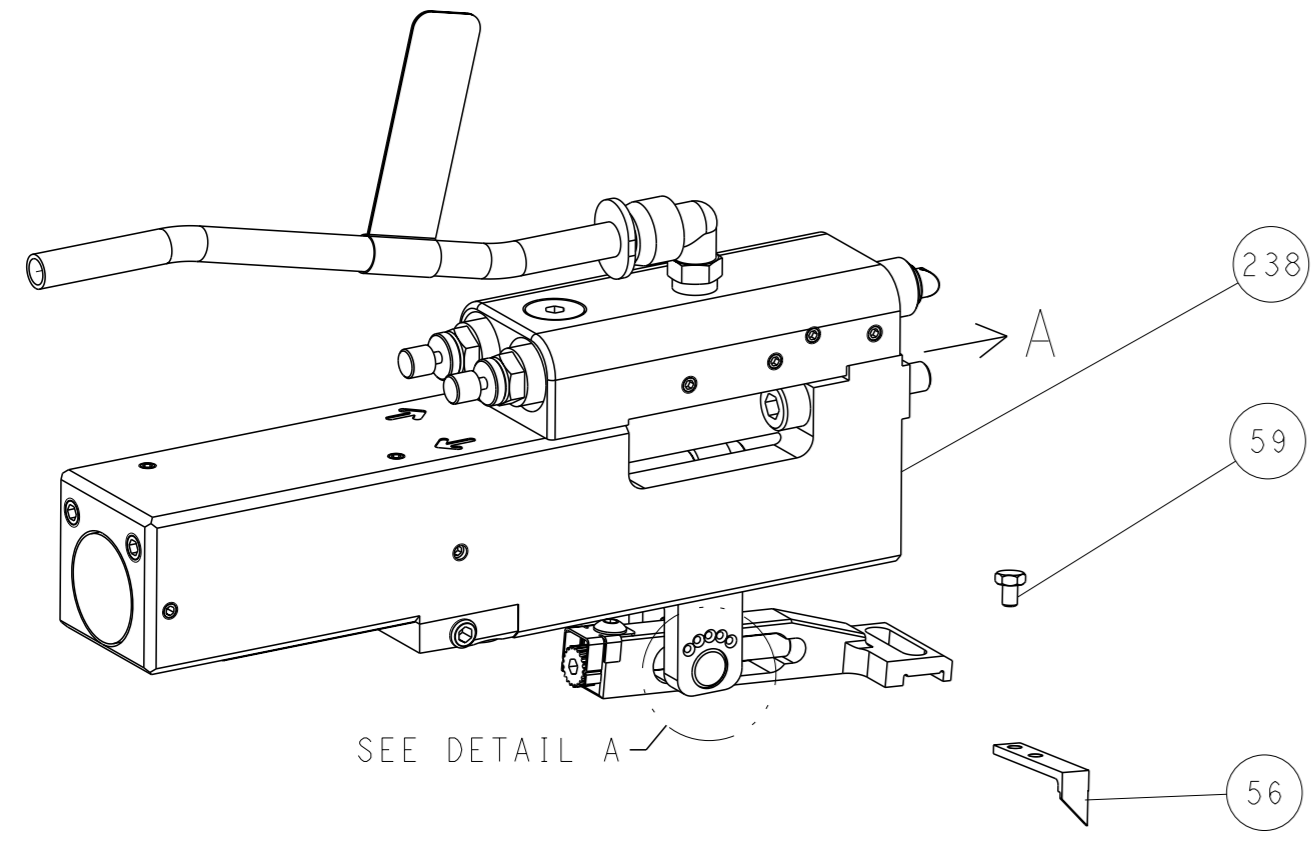
OWN	R. KNEPPER	15-Oct-13
CHK	G. BAILEY	15-Oct-13
APVD	M. CLIFFORD	15-Oct-13
NAME	Ocean Side Feed Applicator	
SIZE	CAGE CODE	DRAWING NO
A1	00779	C=2266114
Customer Accessible Production Drawing		
SCALE	1:2	SHEET 3 of 4
REV	D	

LOC		DIST		REVISIONS			
A	66	P	LYR	DESCRIPTION	DATE	OWN	APVD
		-		SEE SHEET 1	-	-	-

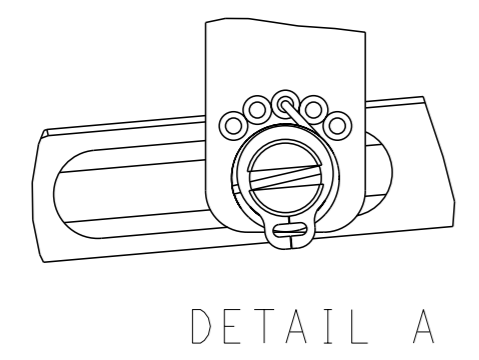
FEED TYPE MECHANICAL



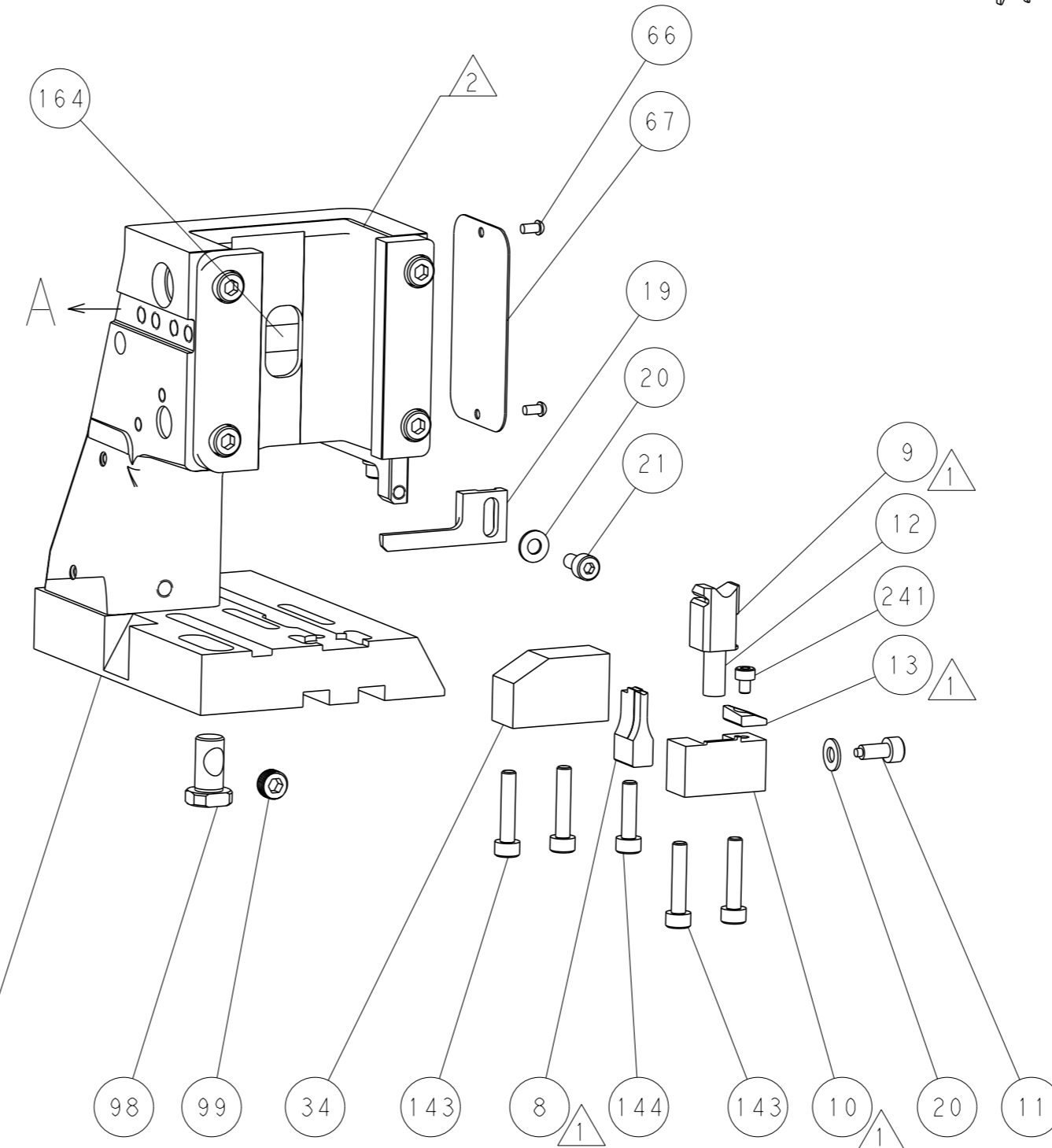
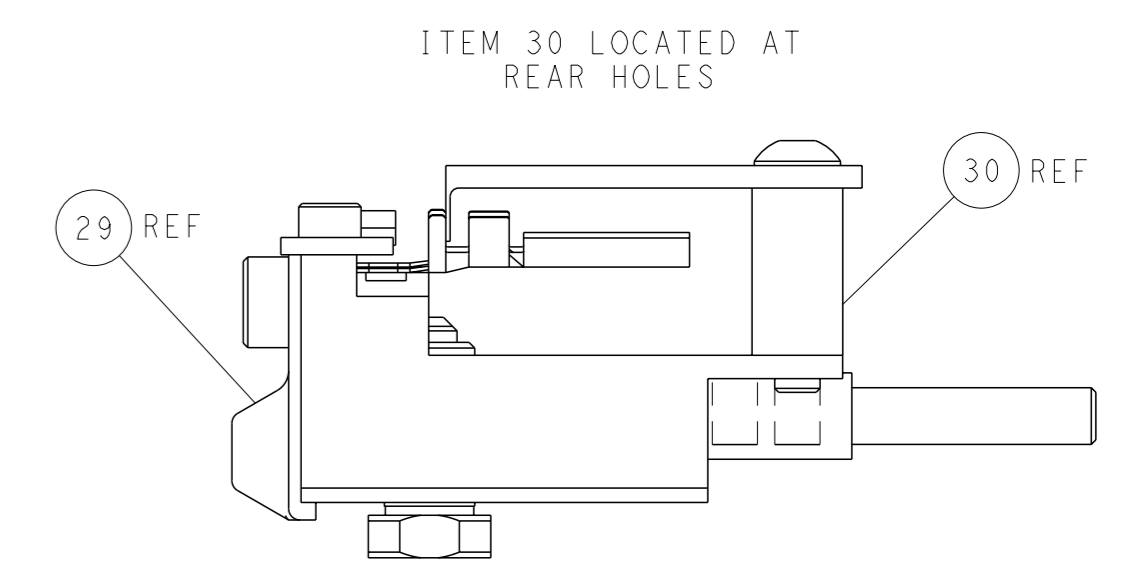
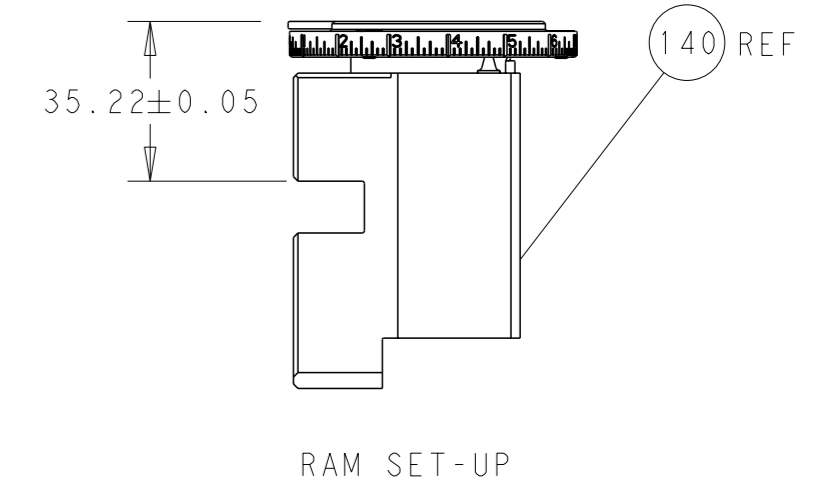
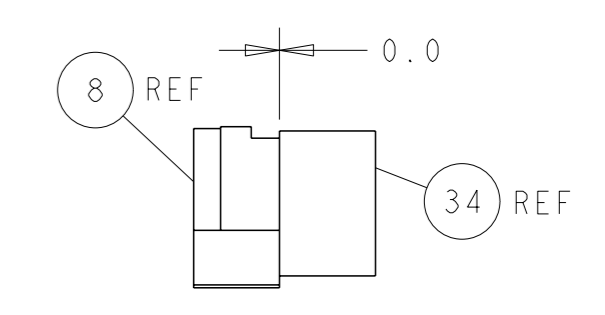
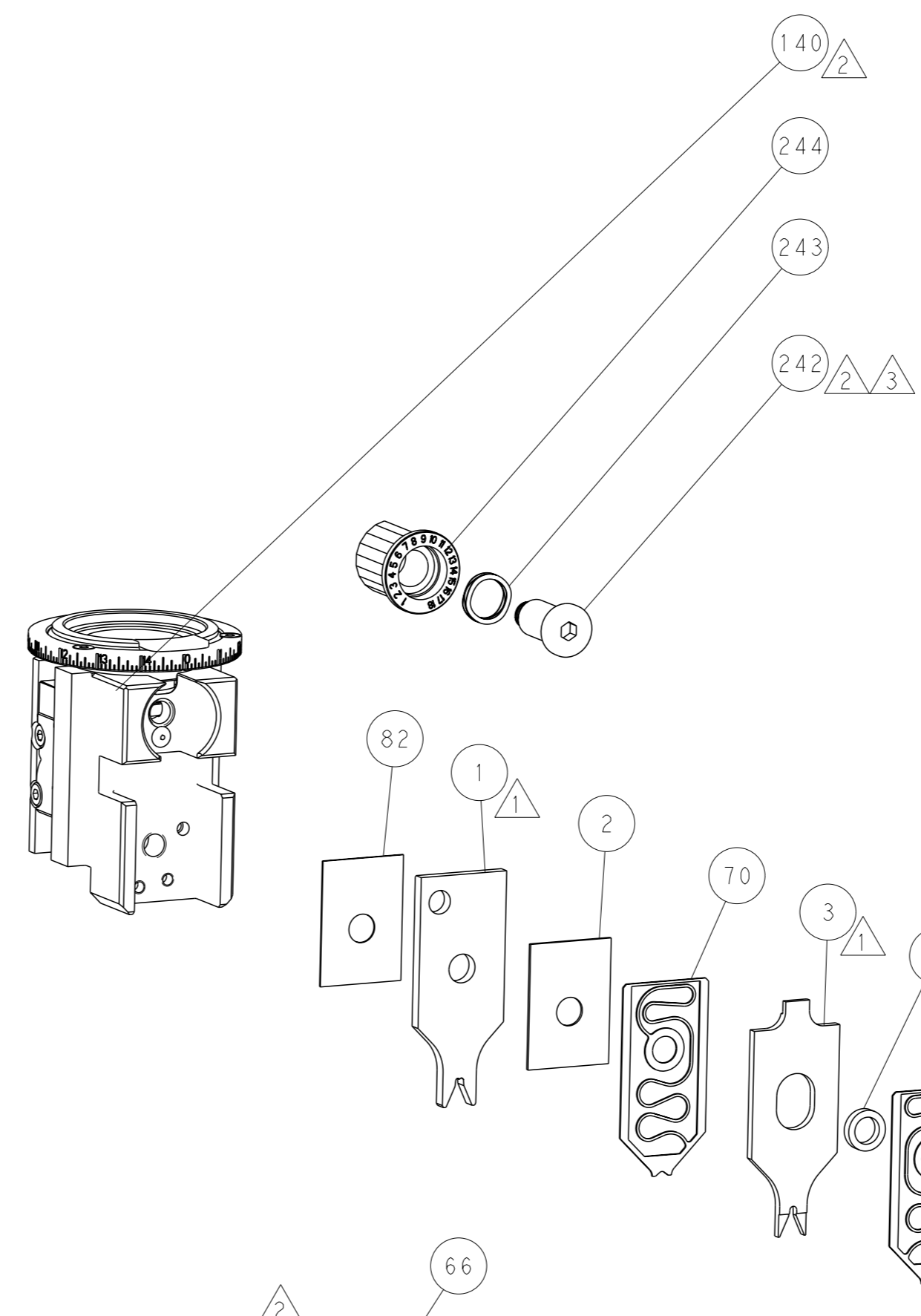
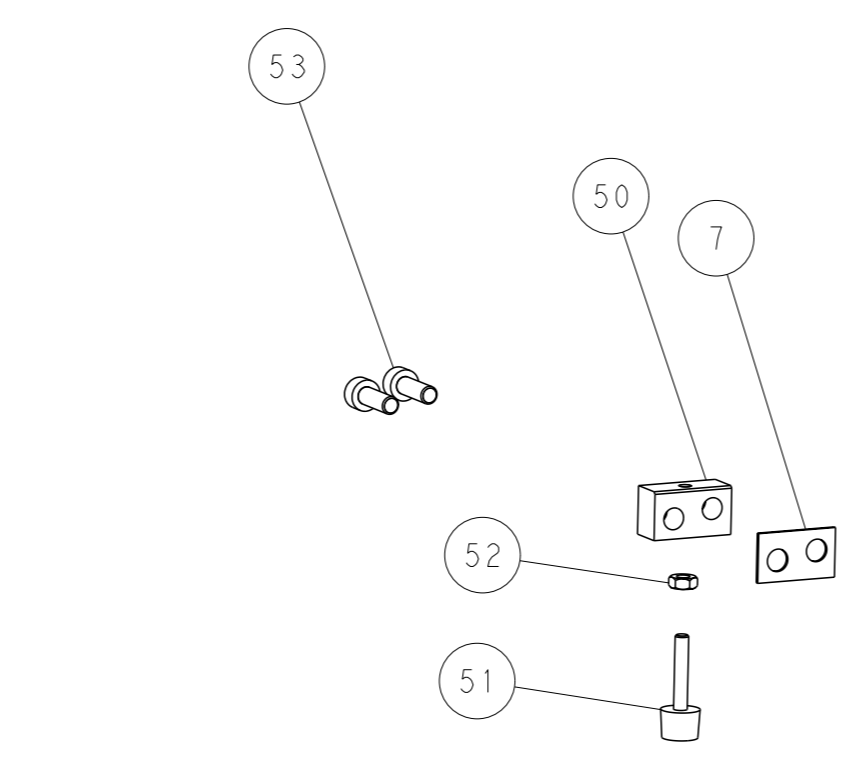
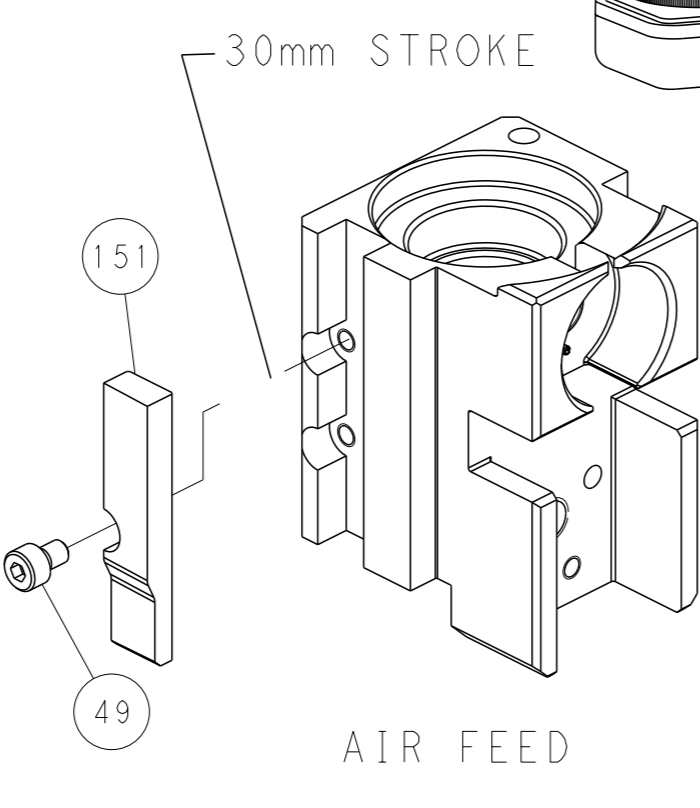
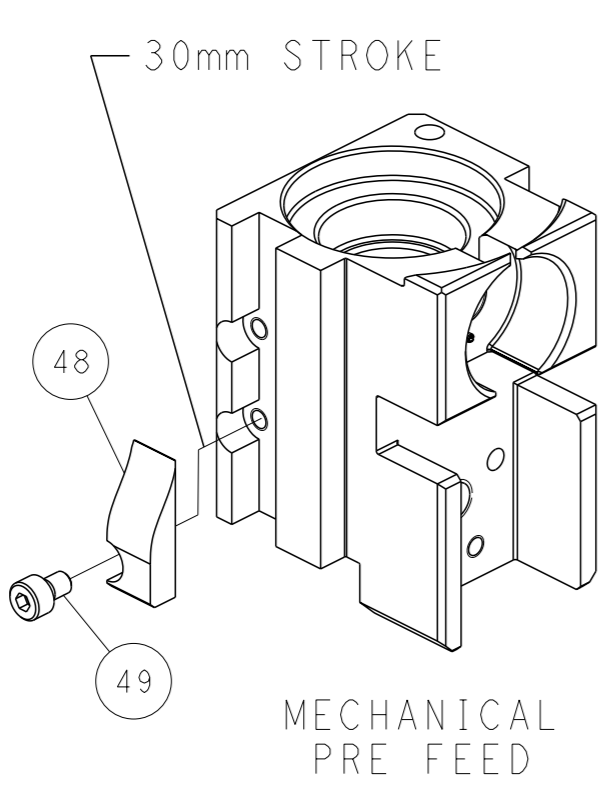
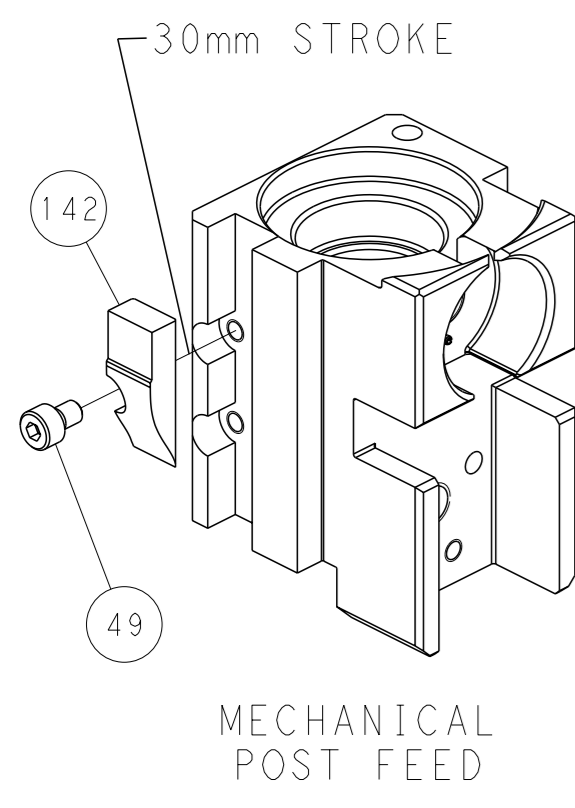
PNEUMATIC



FEED SPRING SETTING POSITION (SHOWN FROM REAR SIDE)



CAM POSITIONS



PACIFIC VERSION
 Shown on sheets 3 of 4 & 4 of 4
 (Atlantic version shown on sheets 1 of 4 & 2 of 4)

<small>THIS DRAWING IS A CONTROLLED DOCUMENT FOR TYCO ELECTRONICS CORPORATION. IT IS SUBJECT TO CHANGE AND THE USER SHALL CONTACT THE DESIGNING ORGANIZATION SHOULD BE CONTACTED FOR THE LATEST REVISION.</small>		OWN: R. KNEPPER 15-Oct-13 CHK: G. BAILEY 15-Oct-13 APVD: M. CLIFFORD 15-Oct-13	NAME: TE Connectivity Harrisburg, PA 17105-3608
DIMENSIONS: mm TOLERANCES UNLESS OTHERWISE SPECIFIED: 0 PLC ± 1 PLC ± 2 PLC ± 3 PLC ± 4 PLC ± ANGLES FINISH ±	APPLICATION SPEC: - WEIGHT: - SCALE: 1:2	SIZE: A1 CAGE CODE: 00779 DRAWING NO: C=2266114	RESTRICTED TO: - SHEET: 4 of 4 REV: D