

ATLANTIC VERSION TERMINATOR INTERFACE ADAPTER	PART NUMBER	REVISION	DESCRIPTION	FEED TYPE	
	2266276-1	B	FINE CRIMP HEIGHT ADJUST	MECHANICAL	SUPERSEDED BY 5-2151041-1
	2266276-2	B	FINE CRIMP HEIGHT ADJUST	PNEUMATIC	SUPERSEDED BY 5-2151041-2
	2266276-5	B	FINE CRIMP HEIGHT ADJUST	SERVO LATCH PLATE	OBSOLETE
	2266276-6	B	NON CRIMP HEIGHT ADJUST	SERVO LATCH PLATE	OBSOLETE
	2266276-7	B	FINE CRIMP HEIGHT ADJUST	NONE	OBSOLETE
	7-2266276-7	A	CRIMP TOOLING KIT	-	-

REVISED	REVISIONS	DATE	BY	CHK
1	DEVELOPMENT	17APR2014	YY	UG
A	RELEASED	13MAY2014	YY	UG
B	ECR-17-003850	16MAR2017	TB	CT
B1	ECR-18-006475	27APR2018	JAH	JDG

APPLICATOR DATA		
CRIMP SIZE	TYPE	
WIRE 1.27 mm [.050]	F	
INSUL 3.05 mm [.120]	O	

APPLICATOR INSTRUCTIONS 408-10135

TERMINAL DATA: TE TERMINAL	TE CRIMP SPECIFICATION
TERMINAL NAME: AMP MCP 1, 2 LL SWS	
WIRE STRIP LENGTH 3.50-3.52 mm [.138-.138 IN]	INSULATION DIAMETER RANGE Ø1.10-1.75 mm [.043-.069 IN]
TERMINAL APPLICATION SPECIFICATION 114-18464	
TERMINALS APPLIED	
TE TERMINAL	TE SEAL
1452665-1	967067-1
1452665-3	963142-2
7-1452665-2	967067-2

WIRE SIZE	CRIMP HEIGHT mm [INCH]	CRIMP HEIGHT REFERENCE SETTING
0.35mm2	0.84 +/- 0.03 [.033 +/- .001]	8.1
22AWG	0.83 +/- 0.03 [.033 +/- .001]	8.3
0.25mm2	0.78 +/- 0.03 [.031 +/- .001]	8.8
24AWG	0.75 +/- 0.03 [.030 +/- .001]	9.0

- 1** RECOMMENDED SPARE PARTS
- 2** GREASE BEARING SURFACES LIGHTLY
- 3** LUBRICATE DAILY PER THE APPLICATOR INSTRUCTION SHEET SUPPLIED WITH THE APPLICATOR.
- 4** APPLICATOR SPECIFIC DATA TO BE ENTERED INTO BLANK MEMORY CHIP AT ASSEMBLY. SEE BELOW FOR PART NUMBER:
 MECHANICAL FEED WITH "SMART APPLICATOR" CONVERSION: 8-2266276-4
 PNEUMATIC FEED WITH "SMART APPLICATOR" CONVERSION: 8-2266276-4
 SERVO FEED WITH "FINE CRIMP HEIGHT ADJUST": 8-2266276-5
 SERVO FEED WITH "NON-CRIMP HEIGHT ADJUST": 8-2266276-6
- 5** ADJUSTMENT OF THE STRIPPER MAY BE REQUIRED WHEN MOVING THE APPLICATOR BETWEEN BENCH AND LEADMAKER APPLICATIONS.
- 6** APPLY PART NUMBER 1-23419-5 LOCTITE TO THREADS OF ITEMS 62 & 180. APPLY PART NUMBER 2-23419-6 TO THREADS OF ITEM 242. FOR -6 ONLY APPLY PART NUMBER 1-23419-5 LOCTITE TO THREADS OF ITEM 37.
- 7** GREASE THREADS, GROOVE AND O-RING ON ITEMS 35 & 252.
- 8** MAGNET, ITEM 166 MUST BE ORIENTED CORRECTLY IN ORDER TO PROPERLY ACTUATE THE COUNTER.
- 9** CRIMP HEIGHT REFERENCE SETTING WAS THE SETTING USED WHEN THE APPLICATOR WAS QUALIFIED AT THE FACTORY. ADJUSTMENT MAY BE NECESSARY WHEN RUNNING APPLICATOR IN THE FIELD.
- 10** SPARE FEED CAM STORAGE LOCATION REFER TO INSTRUCTION SHEET FOR ADDITIONAL INFORMATION.
- 11** TO CONVERT THE APPLICATOR TO A NON-CARRIER CUTTING STYLE, REMOVE ITEM 13 AND ATTACH TO THE LOCATION ON THE BACK SIDE OF THE HOUSING. REFER TO INSTRUCTION SHEET FOR ADDITIONAL INFORMATION.
- 12** WHEN ASSEMBLING -6 NON-CRIMP HEIGHT ADJUST APPLICATOR USE SHIM PACK 2119957-2 TO ALIGN APPLICATOR'S MAXIMUM WIRE CRIMP HEIGHT AT NORMAL TERMINATOR SHUT HEIGHT
- 13** THIS APPLICATOR APPLIES TERMINAL WITH A SEAL. INSULATION RANGLE QUOTED IS THAT OF THE TERMINAL.
 TO THE SEAL 967067-2, INSULATION RANGE IS Ø1.10-1.40 [.043 - .055 IN.]
 TO THE SEAL 967067-1, INSULATION RANGE IS Ø1.40-1.75 [.055 - .069 IN.]
 TO THE SEAL 963142-2, INSULATION RANGE IS Ø1.10-1.30 [.043 - .052 IN.]

***WARNING**
 ON INSTALLATION, SET WIRE DISC, ITEM 40 TO LARGEST WIRE SIZE SETTING. USE OF SETTINGS BELOW MINIMUM REQUIRED CRIMP HEIGHT SETTING WILL CAUSE DAMAGE TO CRIMP TOOLING.

- 14** APPLY TORO-SEAL IN ALLEN SOCKET TO FILL HOLE AFTER FLAT HD HAS BEEN ADJUSTED TO CORRECT HEIGHT AT QUALIFICATION. APPLY #1-23419-5 LOC-TITE TO THREADS.
- 15** DUE TO THE DEMANDS OF APPLICATION SPEC 114-18464 IT IS IMPORTANT, IF THE ANVIL IS MOVED OR REPLACED, THAT IT IS BAISED TOWARDS THE OPERATORS POSITION AS FOR AS POSSIBLE WHEN RESCUING TO THE BASE PLATE.
- 16** THIS APPLICATOR IS SPECIFIC FOR USE IN A STRIPPER SEAL TERMINATING UNIT.

ITEM NO	PART NO	DESCRIPTION	ITEM NO
260	2119957-2	APPLICATOR SHIM PACK	

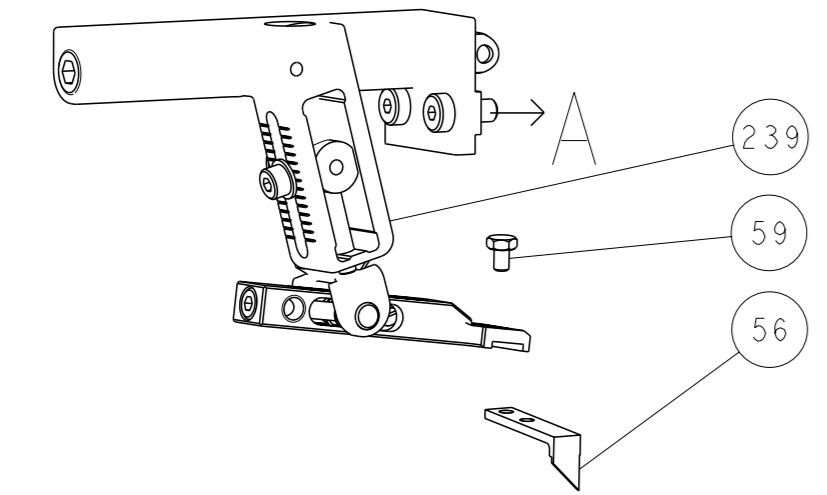
ATLANTIC VERSION
 Shown on sheets 1 of 4 & 2 of 4
 (Pacific version shown on sheets 3 of 4 & 4 of 4)

ITEM NO	PART NO	DESCRIPTION	DATE	BY	CHK
252	8-21084-0	O-RING, .676 ID, .070 DIA. MAT.			
250	2119640-1	PUSH ROD, AIR FEED			
249	1803259-1	BUSHING, FLANGED			
248	2119641-1	FEED CAM, AIR FEED			
247	2119798-1	DETENT PIN			
246	1-22279-3	SPRING, COMPRESSION			
245	2119758-1	RAM, AMP STYLE, SIDE FEED, NON-ADJ.			
244	2119082-8	CAM, SNAIL, INSULATION ADJUSTMENT			
243	2079764-1	WASHER, WAVE SPRING, CREST-TO-CREST			
242	2119083-1	RETAINER, INSULATION DIAL			
241	7-18023-7	SCR, SKT HD CAP M3 X 4.0			
240	2168400-6	SHCS, LOW HEAD, RoHS, M5 X 16			
239	2119580-1	MECHANICAL FEED ASSEMBLY			
238	2063440-1	AIR FEED MODULE			
213	2119740-2	TAG, IDENTIFICATION			
198	1901094-3	SPACER, FEEDER			
182	4-1722335-3	STRIPPER, SIDE FEED			
181	1-5018030-0	NUT, HEX, REG, RoHS, M3.5			
180	1-1752354-6	STANDOFF, HOLD-DOWN			
177	993111-1	PIN, SLOTTED SPRING 3.0 X 20.0			
176	5-22280-0	SPRING, COMPRESSION			
175	1752353-3	GUIDE PIN, HOLDDOWN			
174	1901680-2	GUIDE PIN, HOLDDOWN			
172	21045-3	RING, RETAIN, EXTERN, 3/16 CRESCENT			
166	994969-1	MAGNET, RARE EARTH HIGH ENERGY			
164	994970-2	COUNTER, MAGNETIC			
163	240638-1	SPRING, FEED FINGER			
137	3-23627-7	PIN, RETAIN, GRVD, 3/16 X .854			
136	2119799-1	HOLDER, FEED FINGER, AF			
135	SEE NOTE 4	MEMORY CHIP, PROGRAMMED			
133	1633743-1	SERVO FEED LATCH ASM			
119	1-18028-2	WASHER, FLAT, REG M4			
117	2119944-1	FEED FINGER ASSEMBLY, SF			
82	455888-4	SPACER, CRIMPER			
71	2119956-1	DOCUMENTATION PACKAGE			
67	2119740-1	TAG, IDENTIFICATION			
66	2168078-1	SCREW, DRIVE, RH, RoHS, 2 x .188			
63	2119793-1	LIMITER, ADJUSTMENT BOLT			
62	992763-5	SCR, SET, SOC, CONE PNT, M3 X 4.0			
60	2079383-4	SCR, BHSC, RoHS (M4 X 8)			
59	5-18022-5	SCR, HEX HD CAP, M4 X 6.0			
57	985575-3	SCR, FLT SKT HD CAP M3 X 10.0			
56	1338685-1	PAWL, FEED			
54	2168400-1	SHCS, LOW HEAD, RoHS, M4 X 12			
49	18023-9	SCR, SKT HD CAP M4 X 6.0			
48	2119652-1	FEED CAM, PRE FEED			
47	2119653-1	FEED CAM, POST FEED			
46	2-2119656-1	APPLICATOR BASIC ASSEMBLY, SF			
44	2119370-1	RAM, AMP STYLE, SIDE FEED			
41	2079383-7	SCR, BHSC, RoHS (M8 X 25)			
40	2119645-1	DISC, NUMBERED FA WIRE ADJUSTMENT			
39	2119957-1	APPLICATOR SHIM PACK			
38	2119644-1	RAM WASHER, PRECISION			
37	2119085-1	FA HEAD, ATLANTIC STYLE			
35	2119092-1	BOLT, ADJUSTMENT			
34	1752356-6	SUPPORT, TERMINAL			
33	2079383-5	SCR, BHSC, RoHS (M4 X 20)			
32	2161328-1	HEX HEAD, FLANGED, M5 X 8mm LONG			
30	1-1320908-0	SPACER, STRIP GUIDE			
29	2119959-2	ASSEMBLY, STRIP GUIDE			
28	455888-3	SPACER, CRIMPER			
24	1320928-2	STRIP GUIDE			
13	2119806-1	INSERT, SHEAR			
12	3-22280-3	SPRING, COMPRESSION			
11	1-356885-4	STOP, SHEAR			
10	2119805-1	SHEAR HOLDER, FRONT			
9	318707-1	FLOATING SHEAR, FRONT			
8	3-1333225-9	ANVIL, COMBINATION			
5	2119781-1	DEPRESSOR, SHEAR			
4	238011-4	BLOCK, CRIMPER SPACER			
3	1633965-2	CRIMPER, INSULATION O PREMIUM			
2	455888-9	SPACER, CRIMPER			
1	1-1673600-0	CRIMPER, WIRE			

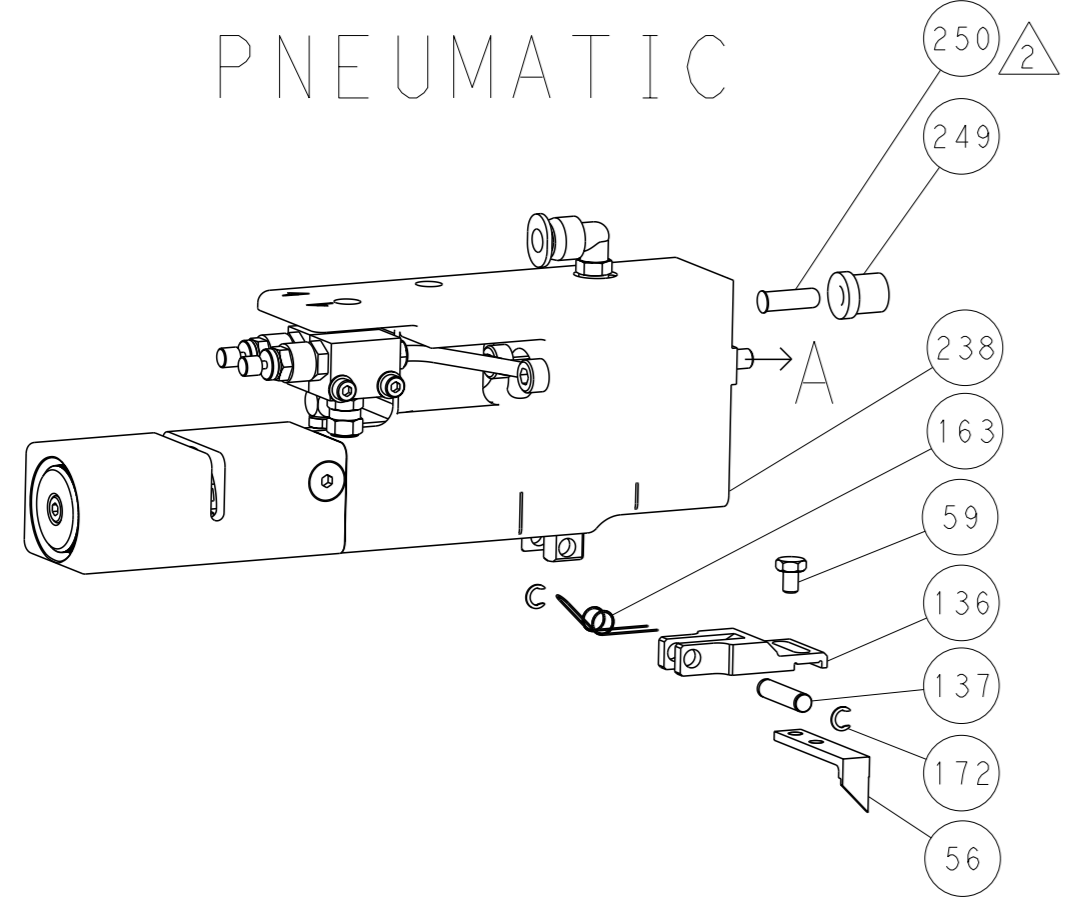
STANDARD INFORMATION	PRODUCT INFORMATION	REVISION INFORMATION	SECURITY INFORMATION
DIMENSIONS: mm 	TOLERANCES UNLESS OTHERWISE SPECIFIED: 0 PL ± 1 PL ± 2 PL ± 3 PL ± 4 PL ± ANGLES FINISH ±	DATE: 17APR2014 CHK: T. ELBIN APVD: J. GUO PRODUCT SPEC: ATLANTIC VERSION APPLICATION SPEC: ATLANTIC VERSION	CUSTOMER ACCESSIBLE PRODUCTION DRAWING

REVISONS		DATE	OWN	APVD
P	LYR			
- SEE SHEET 1		-	-	-

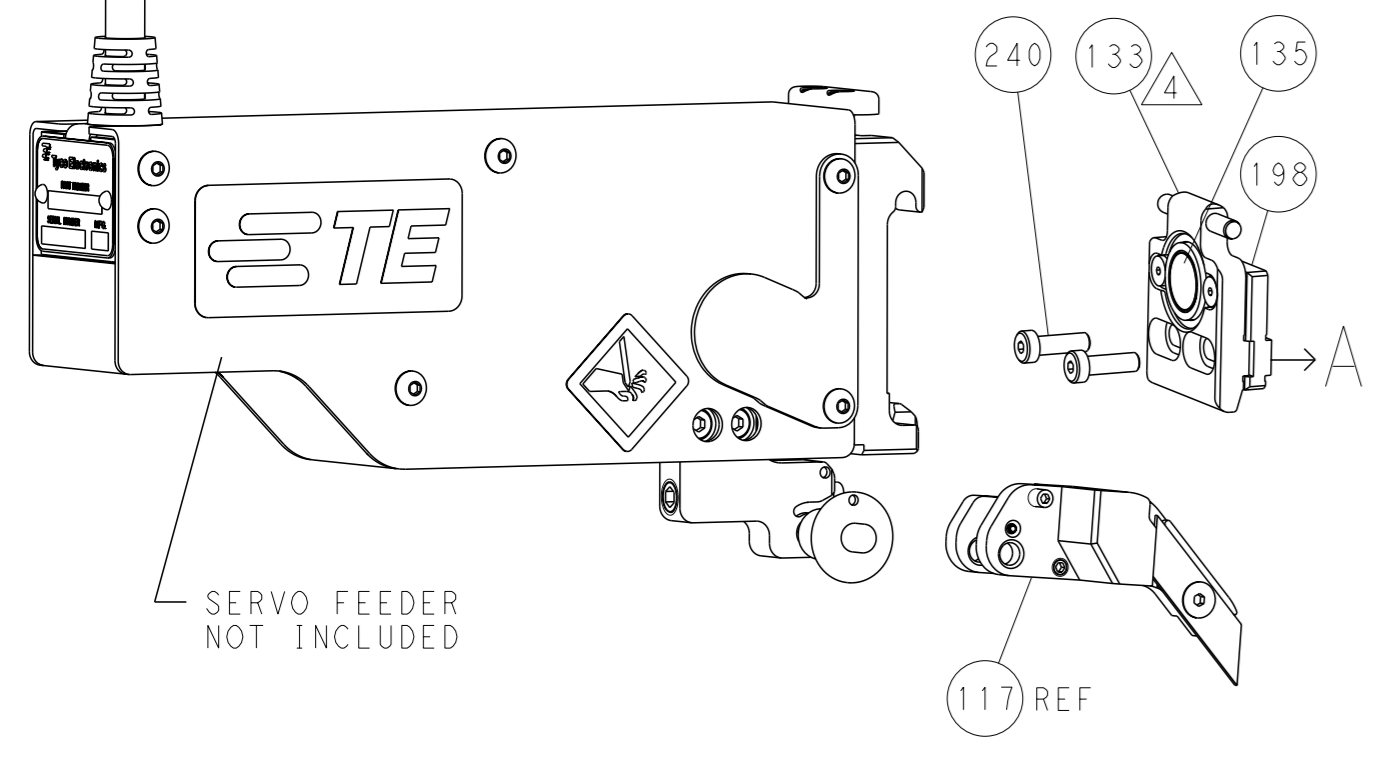
FEED TYPE MECHANICAL



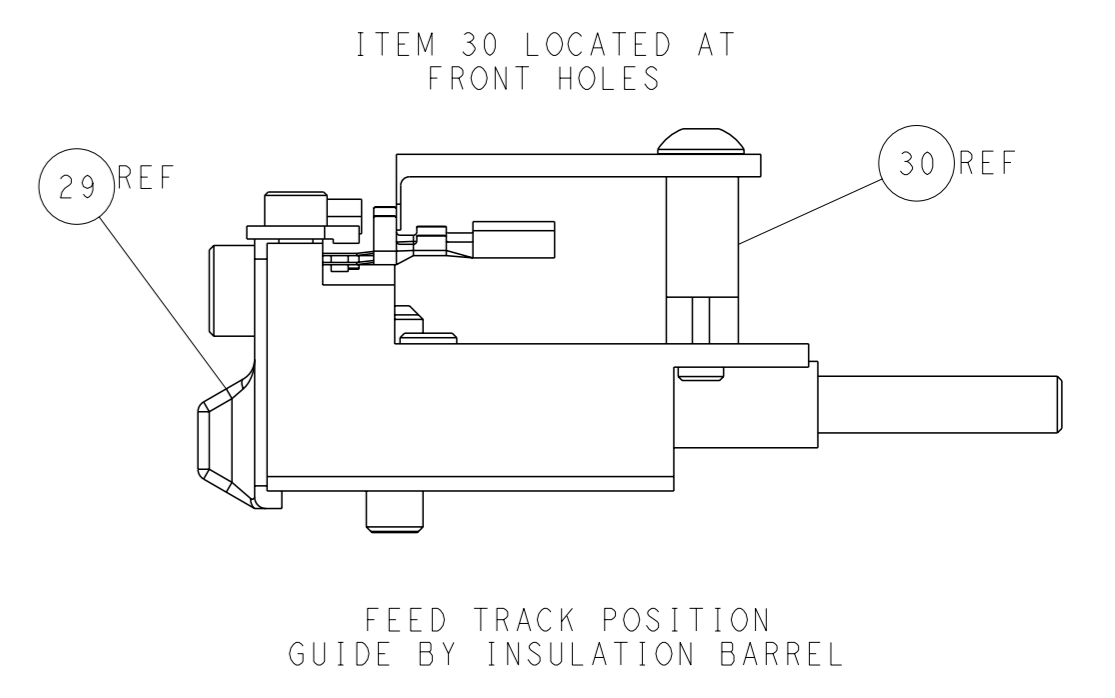
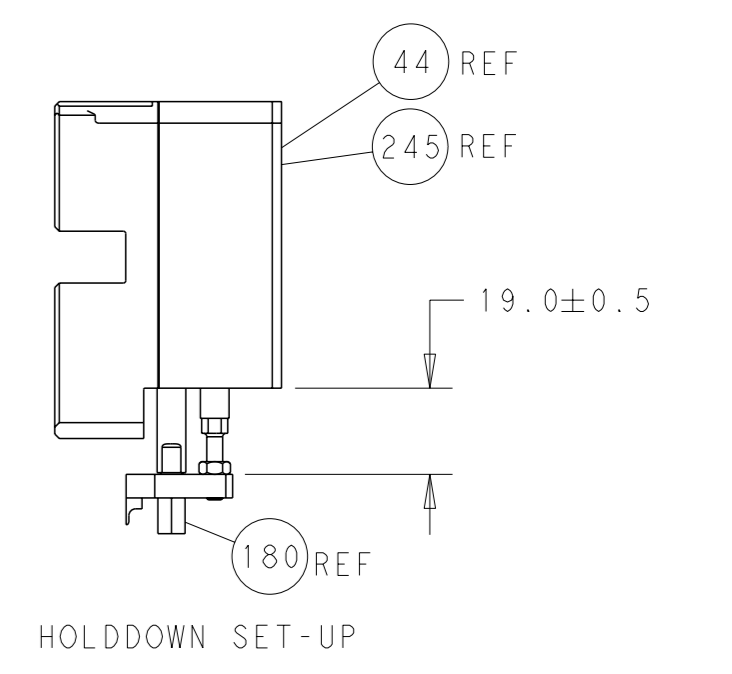
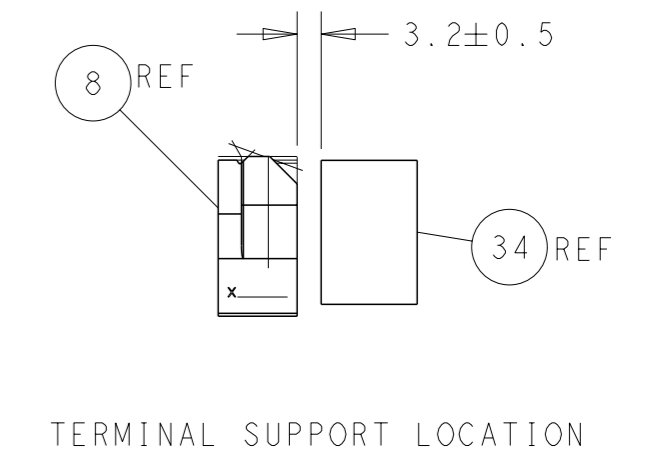
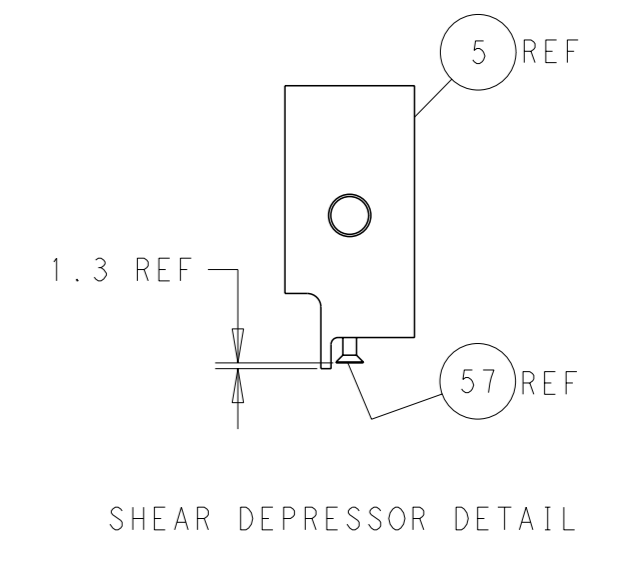
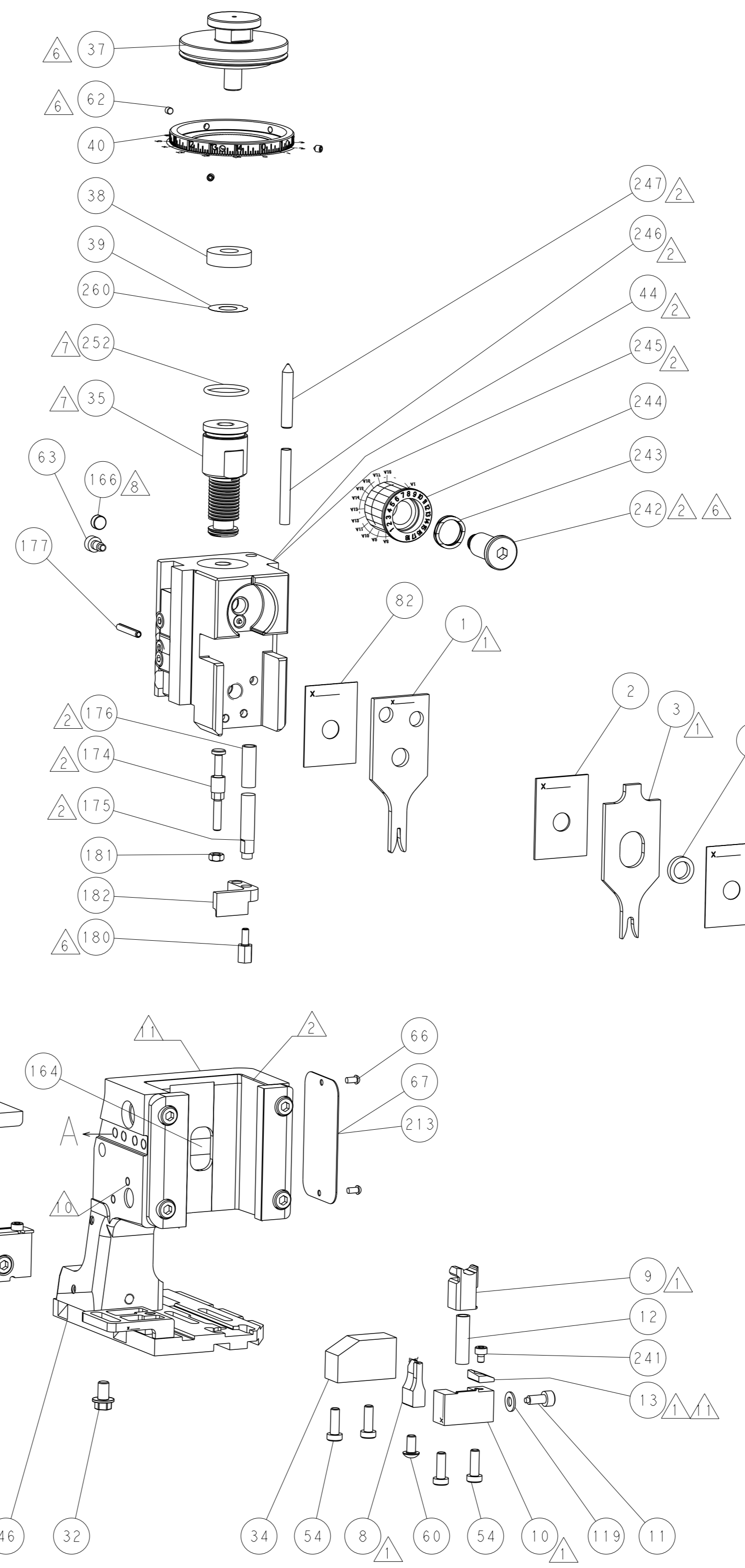
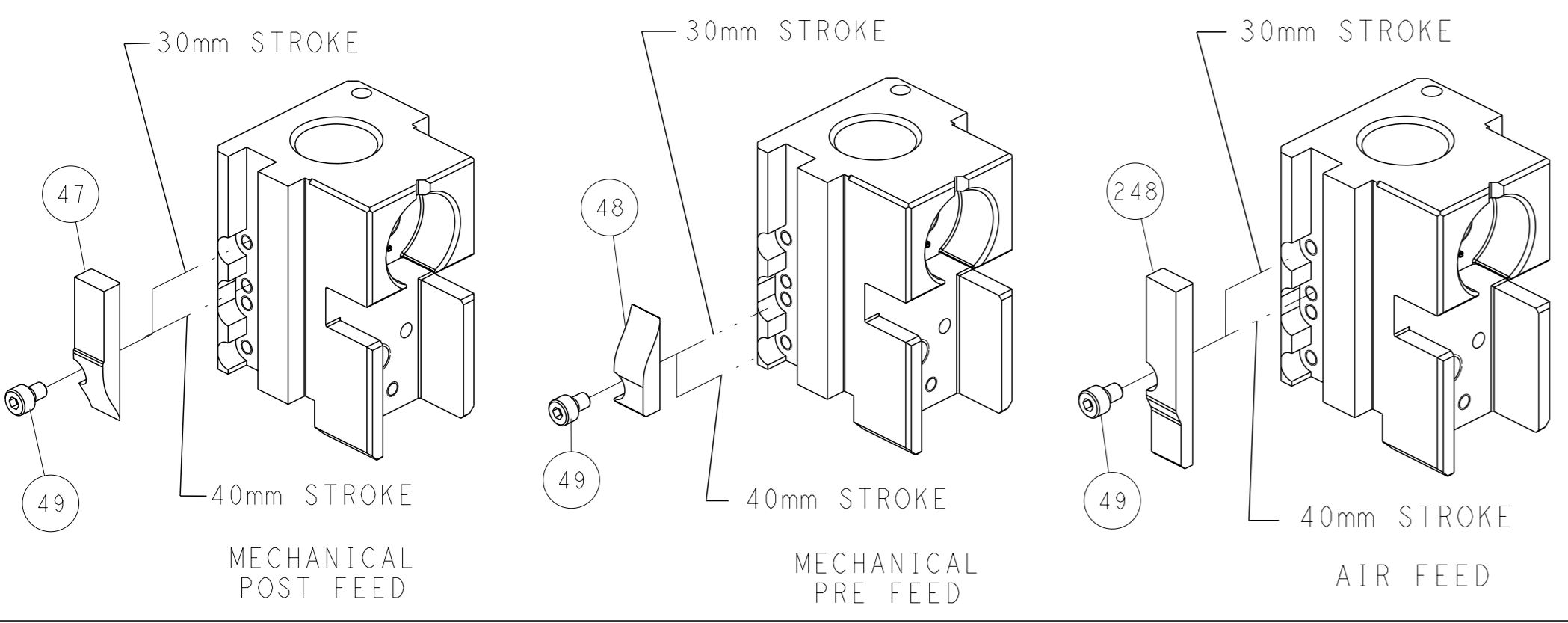
PNEUMATIC



SERVO LATCH PLATE



CAM POSITIONS



ATLANTIC VERSION
 Shown on sheets 1 of 4 & 2 of 4
 (Pacific version shown on sheets 3 of 4 & 4 of 4)

<small>THIS DRAWING IS UNPUBLISHED. RELEASED FOR PUBLICATION. 20 BY TYCO ELECTRONICS CORPORATION. ALL RIGHTS RESERVED.</small>		OWN: Y. YIN 17APR2014 CHK: T. ELBIN 17APR2014 APVD: H. GUO 17APR2014	NAME: Ocean Side Feed Applicator SIZE: A1 CAGE CODE: 00779 DRAWING NO: C=2266276	TE Connectivity Harrisburg, PA 17105-3608
DIMENSIONS: mm TOLERANCES UNLESS OTHERWISE SPECIFIED: 0 PLC ± 1 PLC ± 2 PLC ± 3 PLC ± 4 PLC ± ANGLES FINISH ±	MATERIAL:	WEIGHT:	SCALE: 1:2 SHEET 2 of 4 REV B1	RESTRICTED TO:

PACIFIC VERSION TERMINATOR INTERFACE ADAPTER	PART NUMBER	REVISION	DESCRIPTION	FEED TYPE	
	2-2266276-1	B	FINE CRIMP HEIGHT ADJUST	MECHANICAL	OBSOLETE
	2-2266276-2	B	FINE CRIMP HEIGHT ADJUST	PNEUMATIC	OBSOLETE
	2-2266276-5	B	FINE CRIMP HEIGHT ADJUST	SERVO LATCH PLATE	OBSOLETE
	2-2266276-7	B	FINE CRIMP HEIGHT ADJUST	NONE	OBSOLETE
	7-2266276-7	A	CRIMP TOOLING KIT	-	

APPLICATOR DATA		
CRIMP	SIZE	TYPE
WIRE	1.27 mm (.050)	F
INSUL	3.05 mm (.120)	O
APPLICATOR INSTRUCTIONS 408-10135		

TERMINAL DATA: TE TERMINAL		TE CRIMP SPECIFICATION	
TERMINAL NAME: AMP MCP 1.2 LL SWS			
WIRE STRIP LENGTH 3.50-3.52 mm (.138-.138 IN)		INSULATION DIAMETER RANGE Ø1.10-1.75 mm (.043-.069 IN)	
TERMINAL APPLICATION SPECIFICATION 114-18464			
TERMINALS APPLIED			
TE TERMINAL	TE TERMINAL	TE SEAL	TE SEAL
1452665-1	1452665-2	967067-1	967067-2
1452665-3	7-1452665-1	963142-2	
7-1452665-2	7-1452665-3		

WIRE SIZE	CRIMP HEIGHT mm [INCH]	CRIMP HEIGHT REFERENCE SETTING
0.35mm2	0.84 +/- 0.03 [0.033 +/- .001]	8.1
22AWG	0.83 +/- 0.03 [0.033 +/- .001]	8.3
0.25mm2	0.78 +/- 0.03 [0.031 +/- .001]	8.8
24AWG	0.75 +/- 0.03 [0.030 +/- .001]	9.0

- 1 RECOMMENDED SPARE PARTS
- 2 GREASE BEARING SURFACES LIGHTLY
- 3. LUBRICATE DAILY PER THE APPLICATOR INSTRUCTION SHEET SUPPLIED WITH THE APPLICATOR.
- 4 APPLICATOR SPECIFIC DATA TO BE ENTERED INTO BLANK MEMORY CHIP AT ASSEMBLY. SEE BELOW FOR PART NUMBER:
 MECHANICAL FEED WITH "SMART APPLICATOR" CONVERSION: 8-2266276-4
 PNEUMATIC FEED WITH "SMART APPLICATOR" CONVERSION: 8-2266276-4
 SERVO FEED WITH "FINE CRIMP HEIGHT ADJUST": 8-2266276-5
- 5. ADJUSTMENT OF THE STRIPPER MAY BE REQUIRED WHEN MOVING THE APPLICATOR BETWEEN BENCH AND LEADMAKER APPLICATIONS.
- 6 APPLY PART NUMBER 1-23419-5 LOCTITE TO THREADS OF ITEMS 62 & 180. APPLY PART NUMBER 2-23419-6 TO THREADS OF ITEM 242.
- 7 GREASE THREADS, GROOVE AND O-RING ON ITEMS 139 & 152.
- 8 MAGNET MUST BE ORIENTED CORRECTLY IN ORDER TO PROPERLY ACTUATE THE COUNTER.
- 9 CRIMP HEIGHT REFERENCE SETTING WAS THE SETTING USED WHEN THE APPLICATOR WAS QUALIFIED AT THE FACTORY. ADJUSTMENT MAY BE NECESSARY WHEN RUNNING APPLICATOR IN THE FIELD.
- 10 SPARE FEED CAM STORAGE LOCATION REFER TO INSTRUCTION SHEET FOR ADDITIONAL INFORMATION.
- 11 TO CONVERT THE APPLICATOR TO A NON-CARRIER CUTTING STYLE, REMOVE ITEM 13 AND ATTACH TO THE LOCATION ON BACK SIDE OF THE HOUSING. REFER TO INSTRUCTION SHEET FOR ADDITIONAL INFORMATION.
- 12 THIS APPLICATOR APPLIES TERMINAL WITH A SEAL. INSULATION RANGE QUOTED IS THAT OF THE TERMINAL.
 TO THE SEAL 967067-2, INSULATION RANGE IS Ø1.10-1.40 [0.043 - .055 IN.]
 TO THE SEAL 967067-1, INSULATION RANGE IS Ø1.40-1.75 [0.055 - .069 IN.]
 TO THE SEAL 963142-2, INSULATION RANGE IS Ø1.10-1.30 [0.043 - .052 IN.]
- 13 APPLY TORO-SEAL IN ALLEN SOCKET TO FILL HOLE AFTER FLAT HD HAS BEEN ADJUSTED TO CORRECT HEIGHT AT QUALIFICATION. APPLY #1-23419-5 LOC-TITE TO THREADS.

***WARNING**
 ON INSTALLATION, SET WIRE DISC, ITEM 40 TO LARGEST WIRE SIZE SETTING. USE OF SETTINGS BELOW MINIMUM REQUIRED CRIMP HEIGHT SETTING WILL CAUSE DAMAGE TO CRIMP TOOLING.

- 14 DUE TO THE DEMANDS OF APPLICATION SPEC 114-18464 IT IS IMPORTANT, IF THE ANVIL IS MOVED OR REPLACED, THAT IT IS BAISED TOWARDS THE OPERATORS POSITION AS FOR AS POSSIBLE WHEN RESCURING TO THE BASE PLATE.
- 15 THIS APPLICATOR IS SPECIFIC FOR USE IN A STRIPPER SEAL TERMINATING UNIT.

PACIFIC VERSION
 Shown on sheets 3 of 4 & 4 of 4
 (Atlantic version shown on sheets 1 of 4 & 2 of 4)

SET UP GAUGE	LOC	DIST	REVISIONS					
2119599-1	A	66	#	LYR	DESCRIPTION	DATE	OWN	APVD
			-		SEE SHEET 1			

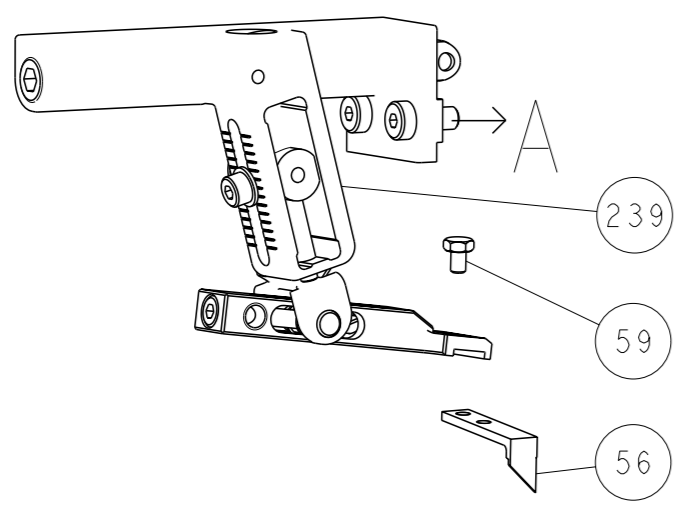
-	1	1	1	1	2119782-1	FINE ADJUST HEAD ASM, PACIFIC STYLE	251
-	-	-	1	-	2119640-1	PUSH ROD, AIR FEED	250
-	-	-	1	-	1803259-1	BUSHING, FLANGED	249
-	1	1	1	1	1-22279-3	SPRING, COMPRESSION	246
-	1	1	1	1	2119082-8	CAM, SNAIL, INSULATION ADJUSTMENT	244
-	1	1	1	1	2079764-1	WASHER, WAVE SPRING, CREST-TO-CREST	243
6	-	1	1	1	2119083-1	RETAINER, INSULATION DIAL	242
-	1	1	1	1	7-18023-7	SCR, SKT HD CAP M3 X 4.0	241
-	-	2	-	-	2168400-6	SHCS, LOW HEAD, RoHS, M5 X 16	240
-	-	-	-	1	2119580-1	MECHANICAL FEED ASSEMBLY	239
-	-	-	1	-	2063440-1	AIR FEED MODULE	238
-	-	1	-	-	2119740-2	TAG, IDENTIFICATION	213
-	-	1	-	-	1901094-3	SPACER, FEEDER	198
-	1	1	1	1	4-1722335-3	STRIPPER, SIDE FEED	182
-	1	1	1	1	1-5018030-0	NUT, HEX, REG, RoHS, M3.5	181
6	-	1	1	1	1-1752354-6	STANDOFF, HOLD-DOWN	180
-	1	1	1	1	993111-1	PIN, SLOTTED SPRING 3.0 X 20.0	177
-	1	1	1	1	5-22280-0	SPRING, COMPRESSION	176
-	1	1	1	1	1752353-3	GUIDE PIN, HOLDDOWN	175
-	1	1	1	1	1901680-2	GUIDE PIN, HOLDDOWN	174
-	-	-	2	-	21045-3	RING, RETAIN, EXTERN, 3/16 CRESCENT	172
-	1	1	1	1	994969-1	MAGNET, RARE EARTH HIGH ENERGY	166
-	REF	REF	REF	REF	994970-2	COUNTER, MAGNETIC	164
-	-	-	1	-	240638-1	SPRING, FEED FINGER	163
7	-	1	1	1	8-21084-1	O-RING, .801 ID, .070 DIA. MAT.	152
-	-	-	1	-	2119641-2	FEED CAM, AIR FEED	151
-	1	1	1	1	2119798-2	DETENT PIN	145
-	1	1	1	1	2079383-8	SCR, BHSC, RoHS (M4 X 16)	144
-	4	4	4	4	2168400-5	SHCS, LOW HEAD, RoHS, M4 X 20	143
-	-	-	-	1	2119653-2	FEED CAM, POST FEED	142
-	1	1	1	1	2-2119656-2	APPLICATOR BASIC ASSEMBLY, SF	141
-	1	1	1	1	2119650-1	RAM, ASIAN STYLE, SIDE FEED	140
-	1	1	1	1	2119092-2	BOLT, ADJUSTMENT	139
-	-	-	1	-	3-23627-7	PIN, RETAIN, GRVD, 3/16 X .854	137
-	-	-	1	-	2119799-1	HOLDER, FEED FINGER, AF	136
-	-	REF	-	-	SEE NOTE 4	MEMORY CHIP, PROGRAMMED	135
-	-	1	-	-	1633743-1	SERVO FEED LATCH ASM	133
-	1	1	1	1	1-18028-2	WASHER, FLAT, REG M4	119
-	-	REF	-	-	2119944-1	FEED FINGER ASSEMBLY, SF	117
-	1	1	1	1	455888-4	SPACER, CRIMPER	82
-	1	1	1	1	2119956-1	DOCUMENTATION PACKAGE	71
-	1	-	1	1	2119740-1	TAG, IDENTIFICATION	67
-	2	2	2	2	2168078-1	SCREW, DRIVE, RH, RoHS, 2 x .188	66
-	1	1	1	1	2119793-1	LIMITER, ADJUSTMENT BOLT	63
6	-	3	3	3	992763-5	SCR, SET, SOC, CONE PNT, M3 X 4.0	62
3	-	1	1	1	5-18022-5	SCR, HEX HD CAP, M4 X 6.0	59
-	-	-	1	1	985575-3	SCR, FLT SKT HD CAP M3 X 10.0	57
-	-	-	1	1	1338685-1	PAWL, FEED	56
-	-	-	1	2	18023-9	SCR, SKT HD CAP M4 X 6.0	49
-	-	-	-	1	2119652-1	FEED CAM, PRE FEED	48
-	1	1	1	1	2079383-7	SCR, BHSC, RoHS (M8 X 25)	41
-	1	1	1	1	2119645-1	DISC, NUMBERED FA WIRE ADJUSTMENT	40
-	1	1	1	1	2119957-1	APPLICATOR SHIM PACK	39
-	1	1	1	1	2119644-1	RAM WASHER, PRECISION	38
-	1	1	1	1	1752356-6	SUPPORT, TERMINAL	34
-	2	2	2	2	2079383-5	SCR, BHSC, RoHS (M4 X 20)	33
-	1	1	1	1	2161328-1	HEX HEAD, FLANGED, M5 x 8mm LONG	32
-	1	1	1	1	1-1320908-0	SPACER, STRIP GUIDE	30
-	1	1	1	1	2119959-2	ASSEMBLY, STRIP GUIDE	29
-	1	1	1	1	455888-3	SPACER, CRIMPER	28
-	1	1	1	1	1320928-2	STRIP GUIDE	24
1	-	1	1	1	2119806-1	INSERT, SHEAR	13
-	1	1	1	1	3-22280-3	SPRING, COMPRESSION	12
-	1	1	1	1	1-356885-4	STOP, SHEAR	11
1	-	1	1	1	2119805-1	SHEAR HOLDER, FRONT	10
1	-	1	1	1	318707-1	FLOATING SHEAR, FRONT	9
4	1	1	1	1	3-1333225-9	ANVIL, COMBINATION	8
-	1	1	1	1	2119781-1	DEPRESSOR, SHEAR	5
-	1	1	1	1	238011-4	BLOCK, CRIMPER SPACER	4
1	1	1	1	1	1633965-2	CRIMPER, INSULATION O PREMIUM	3
-	1	1	1	1	455888-9	SPACER, CRIMPER	2
1	1	1	1	1	1-1673600-0	CRIMPER, WIRE	1

DIMENSIONS:		TOLERANCES UNLESS OTHERWISE SPECIFIED:		NAME	
mm	0 PLC ±	1 PLC ±	2 PLC ±	3 PLC ±	4 PLC ±
	ANGLES FINISH				
MATERIAL		WEIGHT		SCALE	

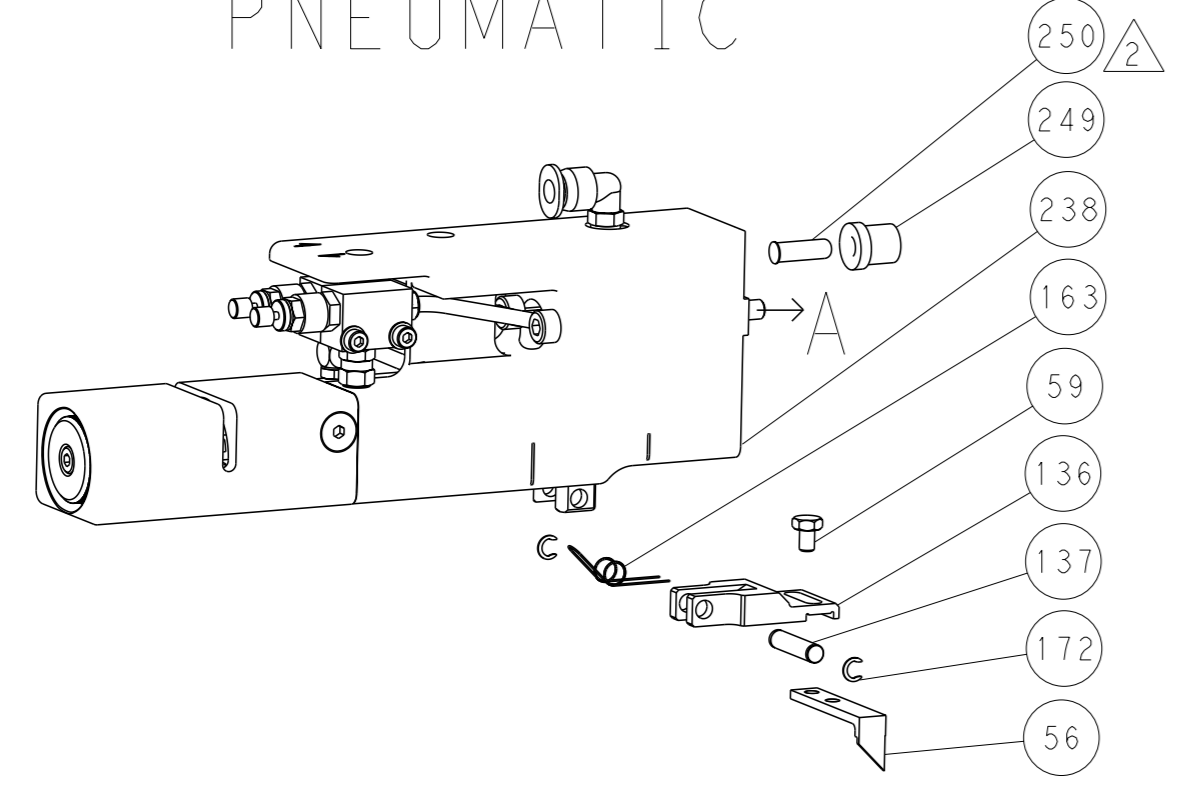
OWN	Y. YIN	17APR2014
CHK	T. ELBIN	17APR2014
APVD	U. GUO	17APR2014
PRODUCT SPEC		
APPLICATION SPEC		
SIZE	CAGE CODE	DRAWING NO
A1	00779	2266276
Customer Accessible Production Drawing		
SCALE	1:2	SHEET 3 of 4

LOC	DIST	REVISIONS			
A	66	REV	DATE	OWN	APVD
-	SEE SHEET 1	-	-	-	-

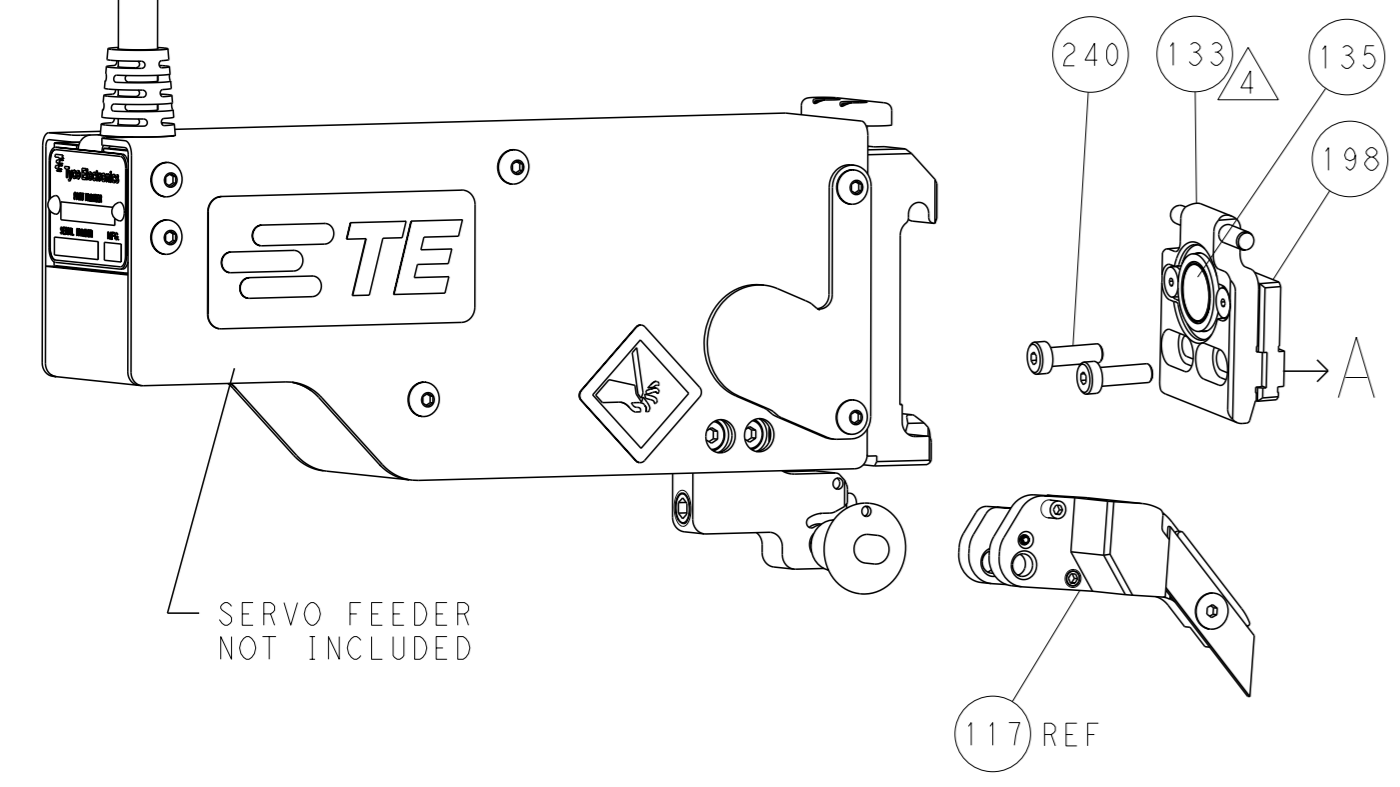
FEED TYPE MECHANICAL



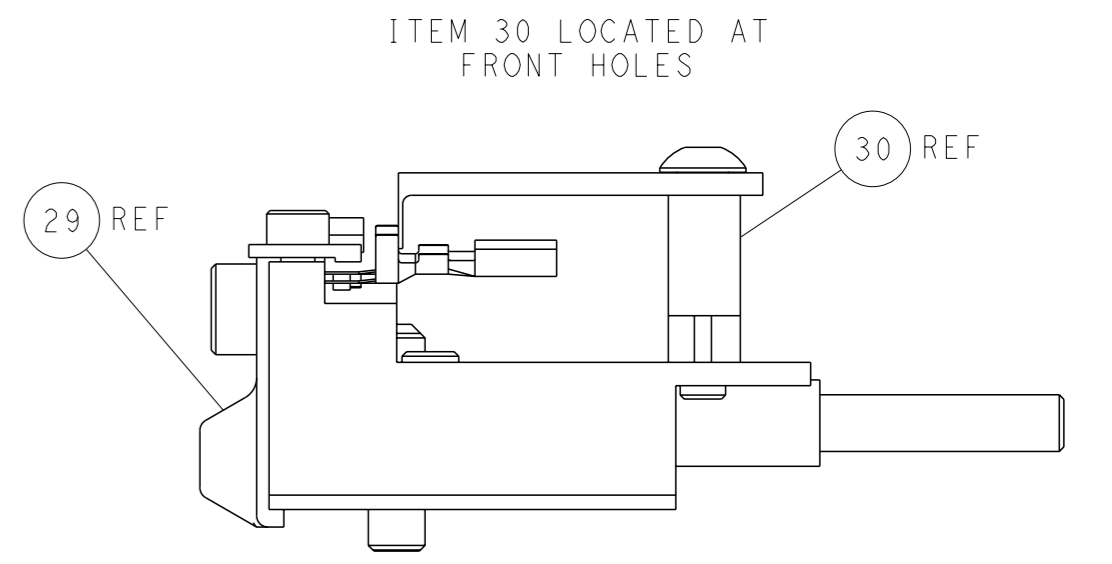
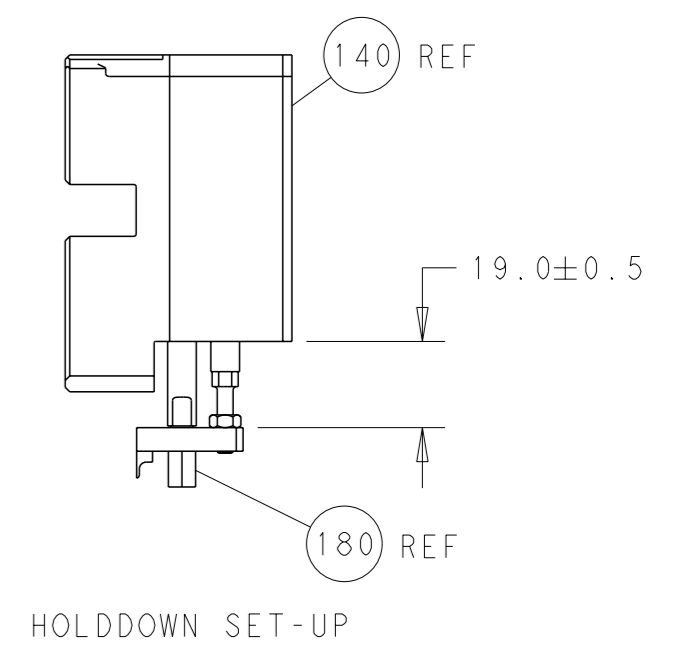
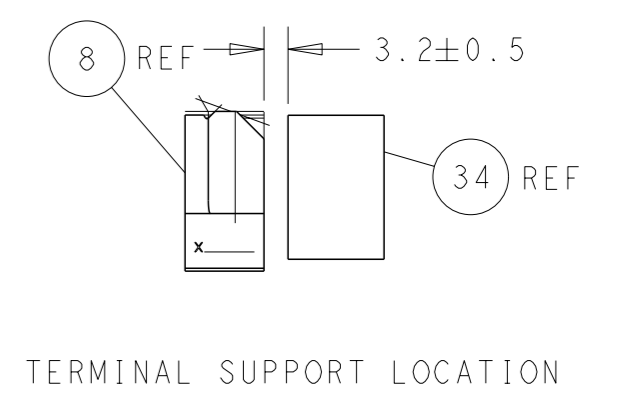
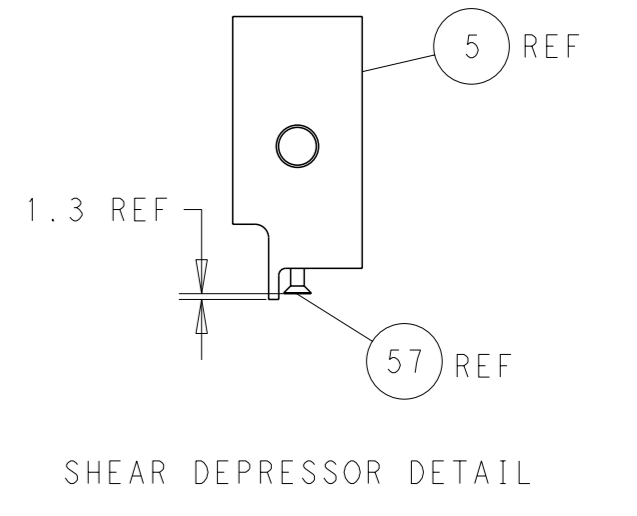
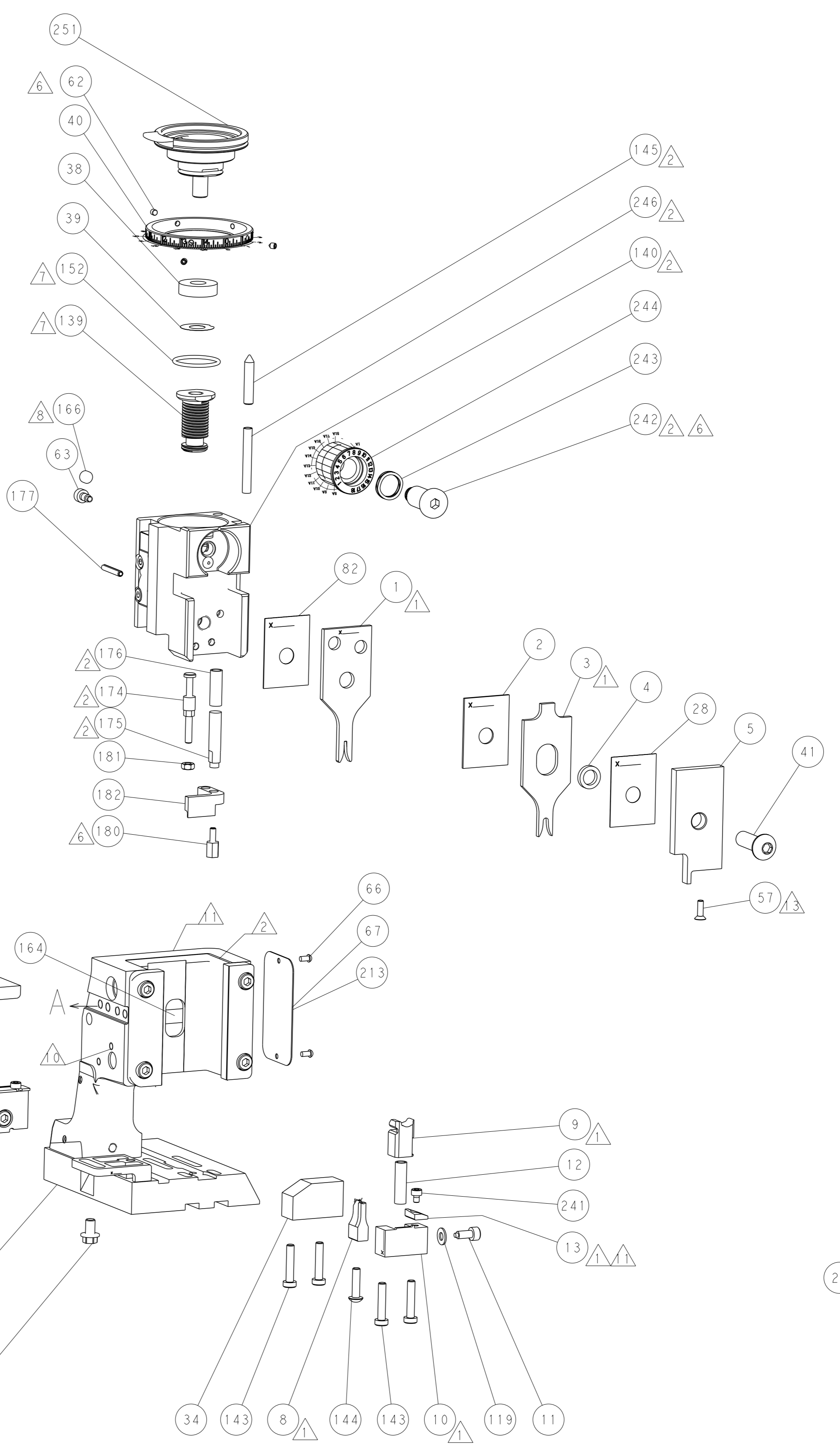
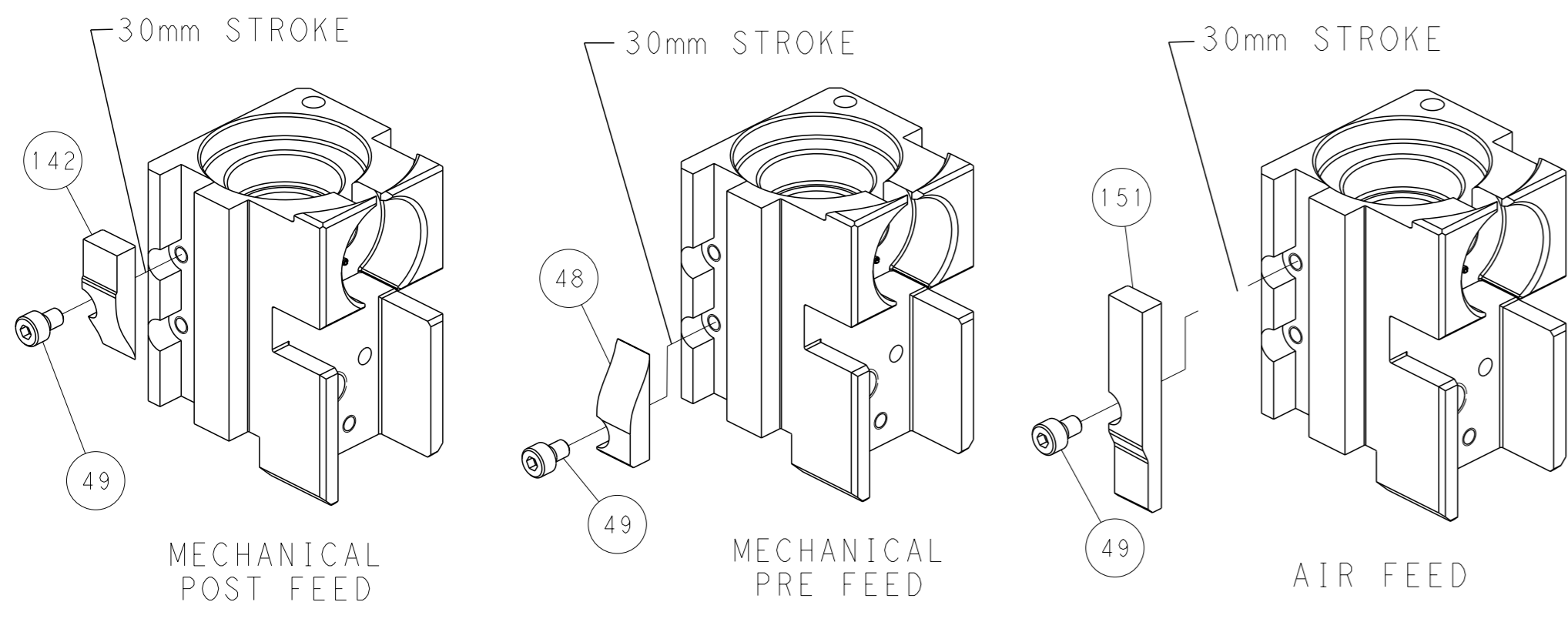
PNEUMATIC



SERVO LATCH PLATE



CAM POSITIONS



PACIFIC VERSION
 Shown on sheets 3 of 4 & 4 of 4
 (Atlantic version shown on sheets 1 of 4 & 2 of 4)

DIMENSIONS:		TOLERANCES UNLESS OTHERWISE SPECIFIED:		OWN Y. YIN 17APR2014		TE Connectivity Harrisburg, PA 17105-3608
mm		0 PLC ±		CHK T. ELBIN 17APR2014		
		1 PLC ±		APVD U. GUO 17APR2014		
MATERIAL:		2 PLC ±		NAME Ocean Side Feed Applicator		
FINISH:		3 PLC ±		PRODUCT SPEC		SIZE CAGE CODE DRAWING NO
		4 PLC ±		APPLICATION SPEC		A1 00779 C=2266276
		ANGLES		WEIGHT		RESTRICTED TO
		FINISH		SCALE 1:2		SHEET 4 OF 4 REV B1