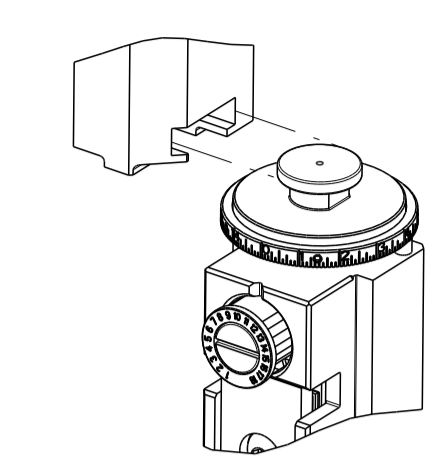


| PART NUMBER | REVISION | DESCRIPTION | FEED TYPE |
|-------------|----------|----------------------------------|------------|
| 2266321-1 | E | FINE CRIMP HEIGHT ADJUST | MECHANICAL |
| 2266321-2 | E | FINE CRIMP HEIGHT ADJUST | PNEUMATIC |
| 7-2266321-1 | E | MECHANICAL AND CRIMP TOOLING KIT | MECHANICAL |
| 7-2266321-2 | E | PNEUMATIC AND CRIMP TOOLING KIT | PNEUMATIC |
| 7-2266321-* | - | SEE CRIMP TOOLING KITS BELOW | - |

ATLANTIC VERSION TERMINATOR INTERFACE ADAPTER

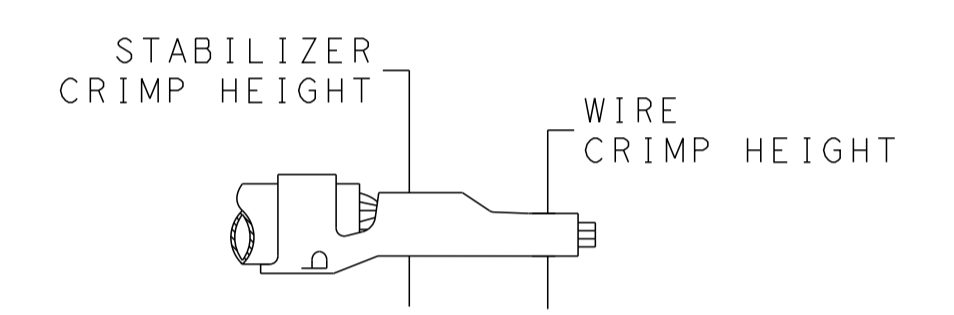


| APPLICATOR DATA | | |
|-----------------|-----------------|------|
| CRIMP | SIZE | TYPE |
| WIRE | 1.07 mm [.042] | F |
| STABILIZER | 1.07 mm [.042] | F |
| INSULATION | 2.79 mm [1.110] | F |

APPLICATOR INSTRUCTIONS
408-35042

| PART NO | REV | WIRE SIZE | WIRE CRIMPER | STABILIZER CRIMPER | INSULATION CRIMPER | ANVIL |
|-------------|-----|-----------|--------------|--------------------|--------------------|-----------|
| 7-2266321-7 | B | 22 AWG | 9-1633609-5 | 4-456401-4 | 2-2119582-1 | 1633916-6 |
| 7-2266321-8 | B | 24-26 AWG | 9-1633609-4 | 4-456401-4 | 2-2119582-1 | 1633916-6 |

| TERMINAL DATA: TE TERMINAL | | TE CRIMP SPECIFICATION | |
|-------------------------------------|-------------|-------------------------------|-------------|
| TERMINAL NAME: MINI AMP-IN TERMINAL | | | |
| WIRE STRIP LENGTH | | INSULATION DIAMETER RANGE | |
| 4.45-5.21 mm [1.175-.205 IN] | | Ø1.02-2.54 mm [0.040-.100 IN] | |
| TERMINAL APPLICATION SPECIFICATION | 114-1016 | | |
| TERMINALS APPLIED | | | |
| TE TERMINAL | TE TERMINAL | TE TERMINAL | TE TERMINAL |
| 3-640401-1 | | | |



| WIRE SIZE | CRIMP HEIGHT mm [INCH] | STABILIZER CRIMP HEIGHT | CRIMP HEIGHT REFERENCE SETTING |
|-----------|-----------------------------|-------------------------|--------------------------------|
| 22 AWG | 0.89+/-0.05 [0.035+/-0.002] | 1.02±0.05 (0.40±0.002) | 6.7 |
| 24-26 AWG | 0.74+/-0.05 [0.029+/-0.002] | 1.02±0.05 (0.40±0.002) | 6.5 |

- RECOMMENDED SPARE PARTS
- REFER TO SUPPLIED INSTRUCTION SHEET FOR CLEANING, LUBRICATION AND STORAGE OF APPLICATOR.
- APPLY PART NUMBER 2-23419-6 LOCTITE TO THREADS OF ITEM 242.
- CRIMP HEIGHT REFERENCE SETTING WAS THE SETTING USED WHEN THE APPLICATOR WAS QUALIFIED AT THE FACTORY. ADJUSTMENT MAY BE NECESSARY WHEN RUNNING APPLICATOR IN THE FIELD.
- TERMINAL LUBRICANT IS RECOMMENDED.
- UNLESS SPECIFIED OTHERWISE TORQUE VALUES SHALL BE USED PER DOCUMENT, 101-35000.
- UNLESS OTHERWISE SPECIFIED SET UP THE APPLICATOR FOR THE 24 OR 26 AWG WIRE USING ITEM 178. THE ADDITIONAL WIRE CRIMPER ITEM 179 NEEDS TO BE SENT WITH THE APPLICATOR TO CRIMP THE 22 AWG WIRE.
- ITEMS 179 TO BE USED WITH 22 AWG ONLY. ITEMS TO BE SHIPPED WITH APPLICATOR.
- ITEMS 178 TO BE USED WITH 24-26 AWG ONLY. ITEMS TO BE SHIPPED WITH APPLICATOR.

***WARNING**
ON INSTALLATION, SET WIRE DISC TO CRIMP HEIGHT REFERENCE SETTING FOR LARGEST WIRE SIZE. CRIMP HEIGHT REFERENCE SETTINGS GREATER THAN THE VALUE SHOWN MAY CAUSE DAMAGE TO THE CRIMP TOOLING. REFER TO THE INSTRUCTION SHEET FOR PROPER SETUP AND ADJUSTMENTS.

| LOC | DIST | REVISIONS | | | | | |
|-----|------|-----------|-----|---------------|-----------|-----|------|
| A | 66 | P | LTN | DESCRIPTION | DATE | DWN | APVD |
| | | B | | ECR-16-011438 | 09AUG2016 | KH | LZ |
| | | C | | ECR-19-002531 | 17FEB2019 | TB | CT |
| | | D | | ECR-19-004225 | 15MAR2019 | JAH | GB |
| | | E | | ECR-23-187379 | 18SEP2023 | JWC | ROY |

| | | | | | | | | |
|---|---|-----|-----|-----|-----|-------------|-------------------------------------|-----|
| - | - | 1 | - | 1 | - | 2119641-1 | FEED CAM, AIR FEED | 248 |
| - | - | 1 | 1 | 1 | 1 | 2119082-8 | CAM, SNAIL, INSULATION ADJUSTMENT | 244 |
| - | - | 1 | 1 | 1 | 1 | 2079764-1 | WASHER, WAVE SPRING, CREST-TO-CREST | 243 |
| - | - | 1 | 1 | 1 | 1 | 2119083-1 | RETAINER, INSULATION DIAL | 242 |
| - | - | 1 | 1 | 1 | 1 | 7-18023-7 | SCR, SKT HD CAP M3 X 4.0 | 241 |
| - | - | 1 | - | 1 | - | 2119580-1 | MECHANICAL FEED ASSEMBLY | 239 |
| - | - | 1 | - | 1 | - | 2844940-1 | AIR FEED MODULE | 238 |
| - | 1 | 1 | 1 | 1 | 1 | 9-1633609-5 | CRIMPER, WIRE | 179 |
| 1 | - | 1 | 1 | 1 | 1 | 9-1633609-4 | CRIMPER, WIRE | 178 |
| - | - | REF | REF | REF | REF | 994970-2 | COUNTER, MAGNETIC | 164 |
| - | - | 1 | 1 | 1 | 1 | 2844908-1 | SCREW, LOCKING | 99 |
| - | - | 1 | 1 | 1 | 1 | 2844907-1 | POST, LOCKING | 98 |
| - | - | 1 | 1 | 1 | 1 | 1-455888-0 | SPACER, CRIMPER | 82 |
| - | - | 1 | 1 | 1 | 1 | 1803607-3 | DOCUMENTATION PACKAGE | 71 |
| - | - | 1 | 1 | 1 | 1 | 2119740-1 | TAG IDENTIFICATION | 67 |
| - | - | 2 | 2 | 2 | 2 | 2168078-1 | SCREW, DRIVE, RH, RoHS, 2 x .188 | 66 |
| - | - | 1 | 1 | 1 | 1 | 2168083-2 | SCR, SKT HD CAP, RoHS, M4 X 8.0 | 60 |
| - | - | 1 | 1 | 1 | 1 | 5-18022-5 | SCR, HEX HD CAP, M4 X 6.0 | 59 |
| - | - | 1 | 1 | 1 | 1 | 1338685-1 | PAWL, FEED | 56 |
| - | - | 4 | 4 | 4 | 4 | 2168083-3 | SCR, SKT HD CAP, RoHS, M4 X 12.0 | 54 |
| - | - | 1 | 2 | 1 | 2 | 18023-9 | SCR, SKT HD CAP M4 X 6.0 | 49 |
| - | - | - | 1 | - | 1 | 2119652-1 | FEED CAM, PRE FEED | 48 |
| - | - | - | 1 | - | 1 | 2119653-1 | FEED CAM, POST FEED | 47 |
| - | - | 1 | 1 | 1 | 1 | 1803583-9 | APPLICATOR BASIC ASSEMBLY, SF | 46 |
| - | - | 1 | 1 | 1 | 1 | 1803515-1 | RAM ASSEMBLY, SF ATLANTIC | 44 |
| - | - | 1 | 1 | 1 | 1 | 1803602-1 | SCR, BHSC, RoHS (M8 X 25) | 41 |
| - | - | 1 | 1 | 1 | 1 | 469465-4 | STOP, WIRE | 34 |
| - | - | 2 | 2 | 2 | 2 | 2079383-5 | SCR, BHSC, RoHS (M4 X 20) | 33 |
| - | - | 2 | 2 | 2 | 2 | 2-2844962-8 | SPACER, CYLINDRICAL, STRIP GUIDE | 30 |
| - | - | 1 | 1 | 1 | 1 | 2844992-1 | ASSEMBLY, STRIP GUIDE | 29 |
| - | - | 1 | 1 | 1 | 1 | 455888-3 | SPACER, CRIMPER | 28 |
| - | - | 1 | 1 | 1 | 1 | 1320928-2 | STRIP GUIDE | 24 |
| - | - | 1 | 1 | 1 | 1 | 2168083-2 | SCR, SKT HD CAP, RoHS, M4 X 8.0 | 21 |
| - | - | 2 | 2 | 2 | 2 | 1-18028-2 | WASHER, FLAT, REG M4 | 20 |
| - | - | 1 | 1 | 1 | 1 | 2119533-3 | STRIPPER, SIDE FEED | 19 |
| - | - | 1 | 1 | 1 | 1 | 2119806-1 | INSERT, SHEAR | 13 |
| - | - | 1 | 1 | 1 | 1 | 3-22280-3 | SPRING, COMPRESSION | 12 |
| - | - | 1 | 1 | 1 | 1 | 1-356885-4 | STOP, SHEAR | 11 |
| - | - | 1 | 1 | 1 | 1 | 2119805-1 | SHEAR HOLDER, FRONT | 10 |
| - | - | 1 | 1 | 1 | 1 | 1803095-1 | FLOATING SHEAR, FRONT | 9 |
| - | 1 | 1 | 1 | 1 | 1 | 1633916-6 | ANVIL, COMBINATION | 8 |
| - | - | - | - | - | - | - | - | 7 |
| - | - | - | - | - | - | - | - | 6 |
| - | - | 1 | 1 | 1 | 1 | 2119757-4 | DEPRESSOR, SHEAR | 5 |
| - | - | 1 | 1 | 1 | 1 | 2-238011-2 | BLOCK, CRIMPER SPACER | 4 |
| 1 | 1 | 1 | 1 | 1 | 1 | 2-2119582-1 | CRIMPER, INSULATION F PREMIUM | 3 |
| - | - | 1 | 1 | 1 | 1 | 1-455888-8 | SPACER, CRIMPER | 2 |
| 1 | 1 | 1 | 1 | 1 | 1 | 4-456401-4 | CRIMPER, WIRE .042 F PREMIUM | 1 |

ATLANTIC VERSION
Shown on sheets 1 of 4 & 2 of 4
(Pacific version shown on sheets 3 of 4 & 4 of 4)

| DIMENSIONS: | | TOLERANCES UNLESS OTHERWISE SPECIFIED: | | MATERIAL: | | FINISH: | | WEIGHT: | | SCALE: | | SHEET: | | REV: | |
|-------------|---------|--|---------|-----------|---------|---------|--------|---------|--|--------|-------|--------|---|------|--|
| mm | 0 PLC ± | 1 PLC ± | 2 PLC ± | 3 PLC ± | 4 PLC ± | ANGLES | FINISH | | | A1 | 00779 | 1 | 4 | E | |

Customer Accessible Production Drawing

| PART NUMBER | REVISION | DESCRIPTION | FEED TYPE |
|-------------|----------|------------------------------|------------|
| 2-2266321-1 | E | FINE CRIMP HEIGHT ADJUST | MECHANICAL |
| 2-2266321-2 | E | FINE CRIMP HEIGHT ADJUST | PNEUMATIC |
| 7-2266321-* | - | SEE CRIMP TOOLING KITS BELOW | - |

PACIFIC VERSION TERMINATOR
INTERFACE ADAPTER

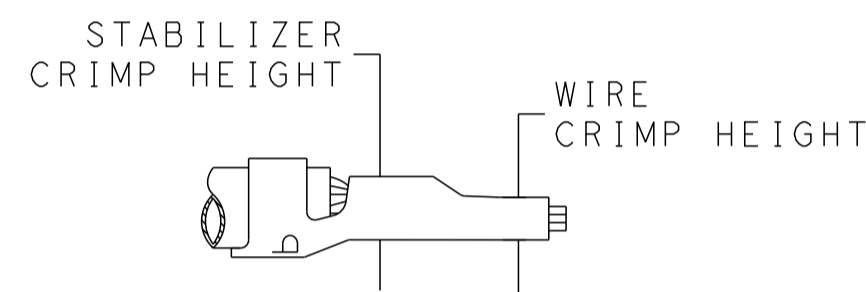


| APPLICATOR DATA | | |
|-----------------|----------------|------|
| CRIMP WIRE | SIZE | TYPE |
| WIRE | 1.07 mm [.042] | F |
| STABILIZER | 1.07 mm [.042] | F |
| INSULATION | 2.79 mm [1.10] | F |

APPLICATOR INSTRUCTIONS
408-35042

| PART NO | REV | WIRE SIZE | WIRE CRIMPER | STABILIZER CRIMPER | INSULATION CRIMPER | ANVIL |
|-------------|-----|-----------|--------------|--------------------|--------------------|-----------|
| 7-2266321-7 | B | 22 AWG | 9-1633609-5 | 4-456401-4 | 2-2119582-1 | 1633916-6 |
| 7-2266321-8 | B | 24-26 AWG | 9-1633609-4 | 4-456401-4 | 2-2119582-1 | 1633916-6 |

| TERMINAL DATA: TE TERMINAL | | TE CRIMP SPECIFICATION | |
|-------------------------------------|-------------|------------------------------|-------------|
| TERMINAL NAME: MINI AMP-IN TERMINAL | | | |
| WIRE STRIP LENGTH | | INSULATION DIAMETER RANGE | |
| 4.45-5.21 mm [1.75-.205 IN] | | Ø1.02-2.54 mm [.040-.100 IN] | |
| TERMINAL APPLICATION SPECIFICATION | 114-1016 | | |
| TERMINALS APPLIED | | | |
| TE TERMINAL | TE TERMINAL | TE TERMINAL | TE TERMINAL |
| 3-640401-1 | | | |



| WIRE SIZE | CRIMP HEIGHT mm [INCH] | STABILIZER CRIMP HEIGHT | CRIMP HEIGHT REFERENCE SETTING |
|-----------|--------------------------------|---------------------------|--------------------------------|
| 22 AWG | 0.89 +/- 0.05 [0.035 +/- .002] | 1.02 ± 0.05 (0.40 ± .002) | 6.7 |
| 24-26 AWG | 0.74 +/- 0.05 [0.029 +/- .002] | 1.02 ± 0.05 (0.40 ± .002) | 6.5 |

- 1 RECOMMENDED SPARE PARTS
- 2 REFER TO SUPPLIED INSTRUCTION SHEET FOR CLEANING, LUBRICATION AND STORAGE OF APPLICATOR.
- 3 APPLY PART NUMBER 2-23419-6 LOCTITE TO THREADS OF ITEM 242.
- 4 CRIMP HEIGHT REFERENCE SETTING WAS THE SETTING USED WHEN THE APPLICATOR WAS QUALIFIED AT THE FACTORY. ADJUSTMENT MAY BE NECESSARY WHEN RUNNING APPLICATOR IN THE FIELD.
- 5 TERMINAL LUBRICANT IS RECOMMENDED.
- 6. UNLESS SPECIFIED OTHERWISE TORQUE VALUES SHALL BE USED PER DOCUMENT, 101-35000.
- 7 UNLESS OTHERWISE SPECIFIED SET UP THE APPLICATOR FOR THE 24 OR 26 AWG WIRE USING ITEM 178. THE ADDITIONAL WIRE CRIMPER ITEM 179 NEEDS TO BE SENT WITH THE APPLICATOR TO CRIMP THE 22 AWG WIRE.
- 8 ITEMS 179 TO BE USED WITH 22 AWG ONLY. ITEMS TO BE SHIPPED WITH APPLICATOR.
- 9 ITEMS 178 TO BE USED WITH 24-26 AWG ONLY. ITEMS TO BE SHIPPED WITH APPLICATOR.

***WARNING**
ON INSTALLATION, SET WIRE DISC TO CRIMP HEIGHT REFERENCE SETTING FOR LARGEST WIRE SIZE. CRIMP HEIGHT REFERENCE SETTINGS GREATER THAN THE VALUE SHOWN MAY CAUSE DAMAGE TO THE CRIMP TOOLING. REFER TO THE INSTRUCTION SHEET FOR PROPER SETUP AND ADJUSTMENTS.

| LOC | DIST | REVISIONS | | | | | |
|-----|------|-----------|-----|-------------|------|-----|------|
| A | 66 | P | LTN | DESCRIPTION | DATE | OWN | APVD |
| - | - | - | - | SEE SHEET 1 | - | - | - |

| | | | | | | |
|---|---|-----|-----|-------------|-------------------------------------|-----|
| - | - | 1 | 1 | 2119082-8 | CAM, SNAIL, INSULATION ADJUSTMENT | 244 |
| - | - | 1 | 1 | 2079764-1 | WASHER, WAVE SPRING, CREST-TO-CREST | 243 |
| - | - | 1 | 1 | 2119083-1 | RETAINER, INSULATION DIAL | 242 |
| - | - | 1 | 1 | 7-18023-7 | SCR, SKT HD CAP M3 X 4.0 | 241 |
| - | - | - | 1 | 2119580-1 | MECHANICAL FEED ASSEMBLY | 239 |
| - | - | 1 | - | 2844940-1 | AIR FEED MODULE | 238 |
| - | 1 | 1 | 1 | 9-1633609-5 | CRIMPER, WIRE | 179 |
| 1 | - | 1 | 1 | 9-1633609-4 | CRIMPER, WIRE | 178 |
| - | - | REF | REF | 994970-2 | COUNTER, MAGNETIC | 164 |
| - | - | 1 | - | 2119641-2 | FEED CAM, AIR FEED | 151 |
| - | - | 1 | 1 | 2168083-8 | SCR, SKT HD CAP, RoHS, M4 X 16 | 144 |
| - | - | 4 | 4 | 2168083-9 | SCR, SKT HD CAP, RoHS, M4 X 20 | 143 |
| - | - | - | 1 | 2119653-2 | FEED CAM, POST FEED | 142 |
| - | - | 1 | 1 | 1-1803583-0 | APPLICATOR BASIC ASSEMBLY, SF | 141 |
| - | - | 1 | 1 | 1803516-1 | RAM ASSEMBLY, SF PACIFIC | 140 |
| - | - | 1 | 1 | 2844908-1 | SCREW, LOCKING | 99 |
| - | - | 1 | 1 | 2844907-1 | POST, LOCKING | 98 |
| - | - | 1 | 1 | 1-455888-0 | SPACER, CRIMPER | 82 |
| - | - | 1 | 1 | 1803607-3 | DOCUMENTATION PACKAGE | 71 |
| - | - | 1 | 1 | 2119740-1 | TAG, IDENTIFICATION | 67 |
| - | - | 2 | 2 | 2168078-1 | SCREW, DRIVE, RH, RoHS, 2 x .188 | 66 |
| - | - | 1 | 1 | 5-18022-5 | SCR, HEX HD CAP, M4 X 6.0 | 59 |
| - | - | 1 | 1 | 1338685-1 | PAWL, FEED | 56 |
| - | - | 1 | 2 | 18023-9 | SCR, SKT HD CAP M4 X 6.0 | 49 |
| - | - | - | 1 | 2119652-1 | FEED CAM, PRE FEED | 48 |
| - | - | 1 | 1 | 1803602-1 | SCR, BHSC, RoHS (M8 X 25) | 41 |
| - | - | 1 | 1 | 469465-4 | STOP, WIRE | 34 |
| - | - | 2 | 2 | 2079383-5 | SCR, BHSC, RoHS (M4 X 20) | 33 |
| - | - | 2 | 2 | 2-2844962-8 | SPACER, CYLINDRICAL, STRIP GUIDE | 30 |
| - | - | 1 | 1 | 2844992-1 | ASSEMBLY, STRIP GUIDE | 29 |
| - | - | 1 | 1 | 455888-3 | SPACER, CRIMPER | 28 |
| - | - | 1 | 1 | 1320928-2 | STRIP GUIDE | 24 |
| - | - | 1 | 1 | 2168083-2 | SCR, SKT HD CAP, RoHS, M4 X 8.0 | 21 |
| - | - | 2 | 2 | 1-18028-2 | WASHER, FLAT, REG M4 | 20 |
| - | - | 1 | 1 | 2119533-3 | STRIPPER, SIDE FEED | 19 |
| - | - | 1 | 1 | 2119806-1 | INSERT, SHEAR | 13 |
| - | - | 1 | 1 | 3-22280-3 | SPRING, COMPRESSION | 12 |
| - | - | 1 | 1 | 1-356885-4 | STOP, SHEAR | 11 |
| - | - | 1 | 1 | 2119805-1 | SHEAR HOLDER, FRONT | 10 |
| - | - | 1 | 1 | 1803095-1 | FLOATING SHEAR, FRONT | 9 |
| - | - | 1 | 1 | 1633916-6 | ANVIL, COMBINATION | 8 |
| - | - | - | - | - | - | 7 |
| - | - | - | - | - | - | 6 |
| - | - | 1 | 1 | 2119757-4 | DEPRESSOR, SHEAR | 5 |
| - | - | 1 | 1 | 2-238011-2 | BLOCK, CRIMPER SPACER | 4 |
| - | - | 1 | 1 | 2-2119582-1 | CRIMPER, INSULATION F PREMIUM | 3 |
| - | - | 1 | 1 | 1-455888-8 | SPACER, CRIMPER | 2 |
| - | - | 1 | 1 | 4-456401-4 | CRIMPER, WIRE .042 F PREMIUM | 1 |

PACIFIC VERSION
Shown on sheets 3 of 4 & 4 of 4
(Atlantic version shown on sheets 1 of 4 & 2 of 4)

| DIMENSIONS: | | TOLERANCES UNLESS OTHERWISE SPECIFIED: | | MATERIAL: | | FINISH: | | WEIGHT: | | SCALE: | | SHEET: | | REV: | |
|-------------|---------|--|---------|-----------|---------|---------|--------|---------|--|--|-----|--------|---|------|--|
| mm | 0 PLC ± | 1 PLC ± | 2 PLC ± | 3 PLC ± | 4 PLC ± | ANGLES | FINISH | | | Customer Accessible Production Drawing | 1:2 | 3 | 4 | E | |

OWN: HOFFNER 3 JUNE 2014
CHK: T. ELBIN 4 JUNE 2014
APVD: T. ELBIN 4 JUNE 2014

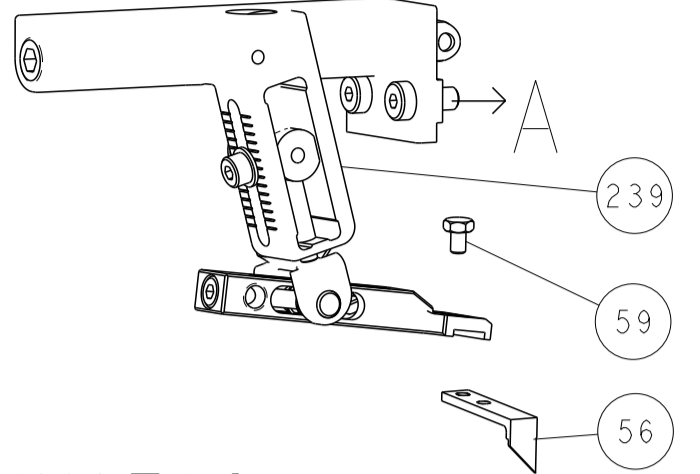
NAME: Ocean Side Feed Applicator

SIZE: A1 CAGE CODE: 00779 DRAWING NO: 2266321

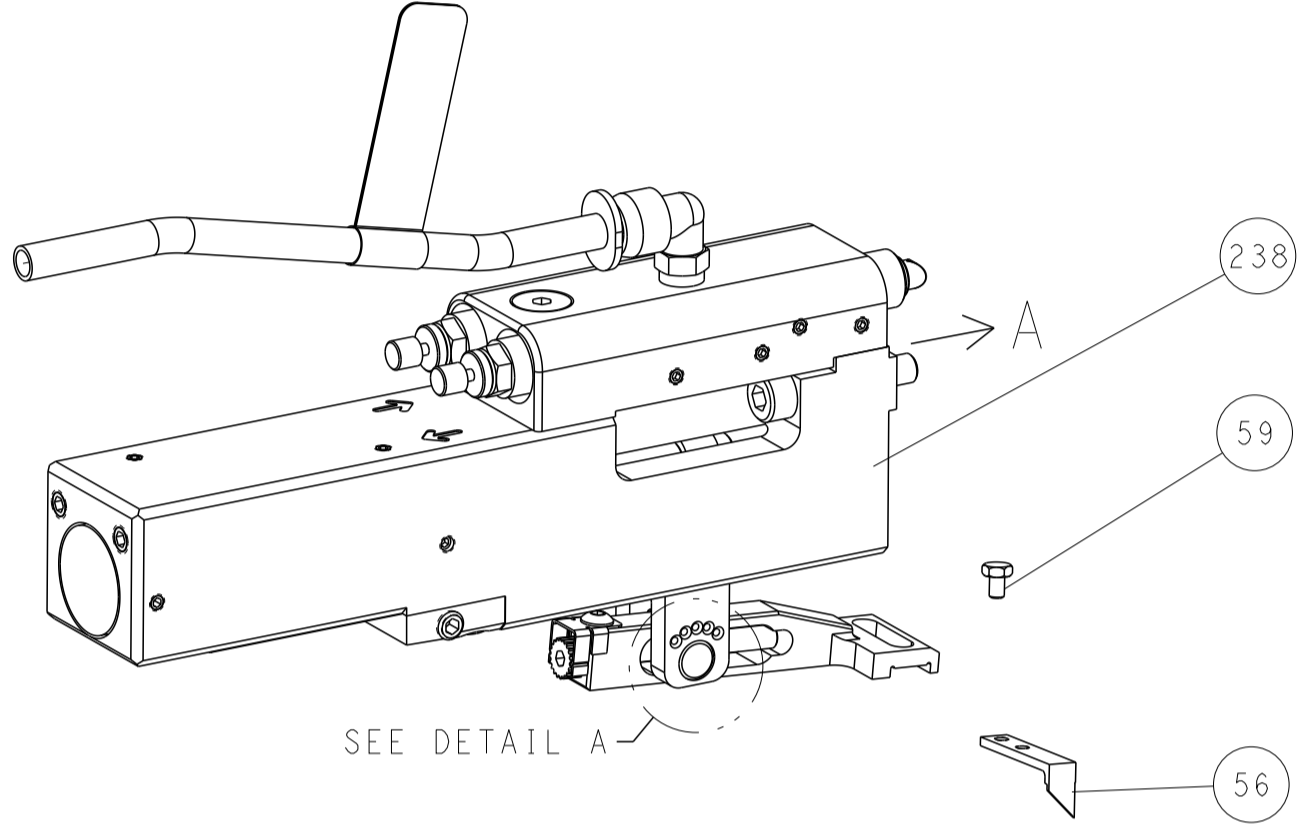
RESTRICTED TO: -

| LOC | DIST | REVISIONS | | | | | |
|-----|------|-----------|-----|-------------|------|-----|------|
| A | 66 | P | LTN | DESCRIPTION | DATE | OWN | APVD |
| | | - | | SEE SHEET 1 | | | |

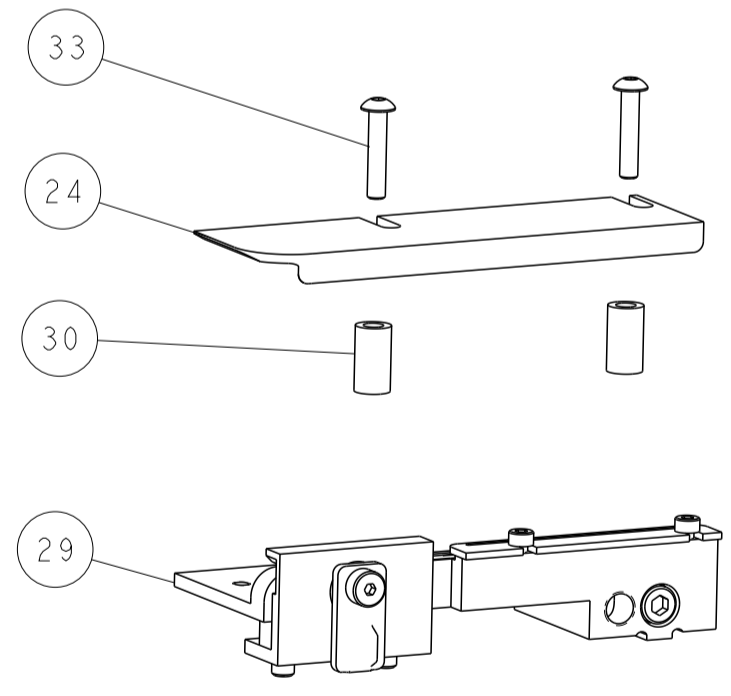
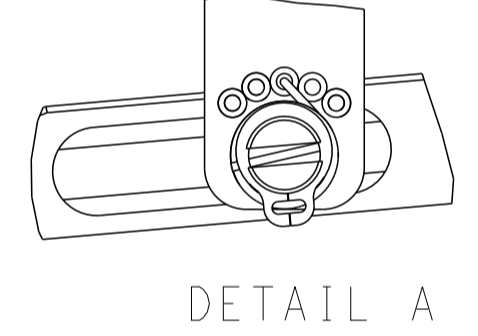
FEED TYPE MECHANICAL



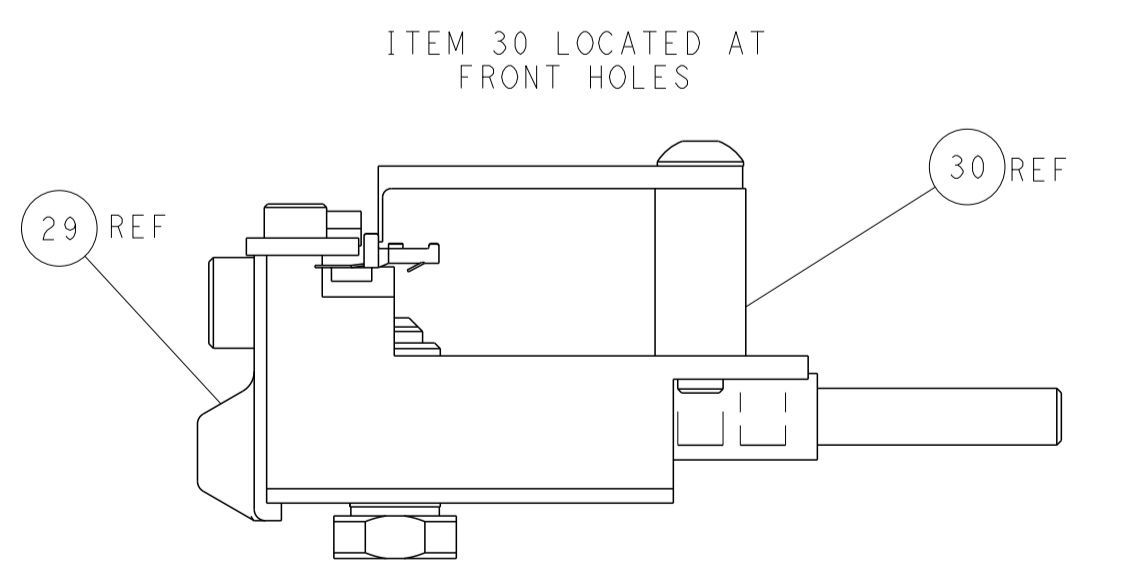
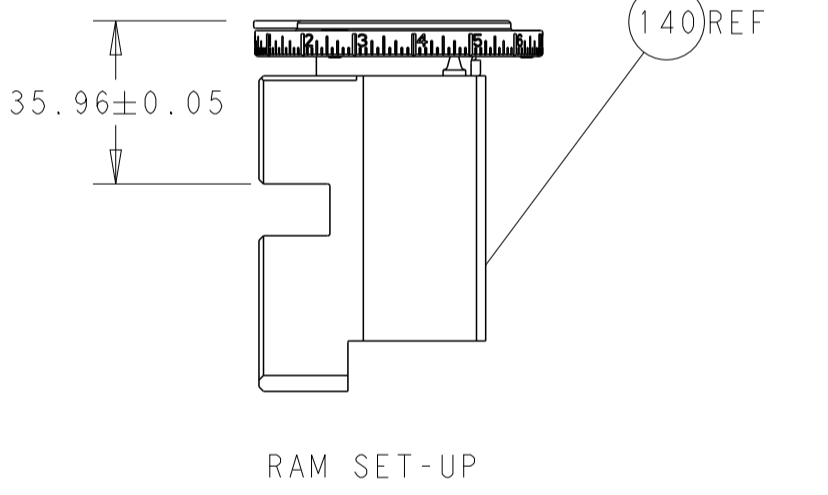
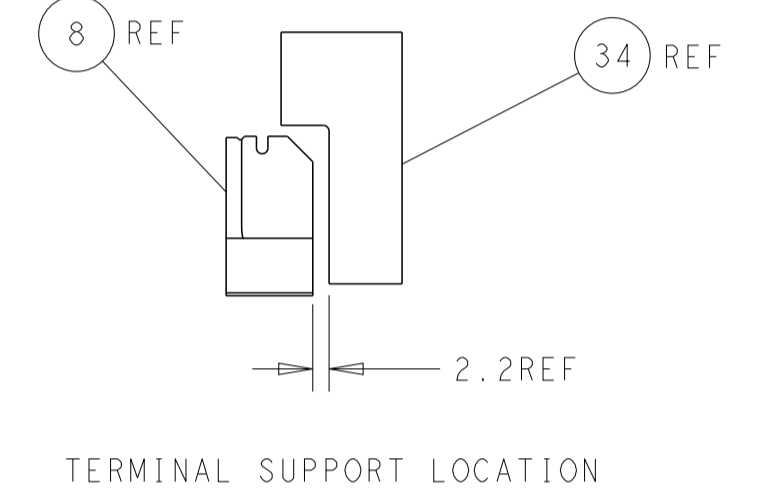
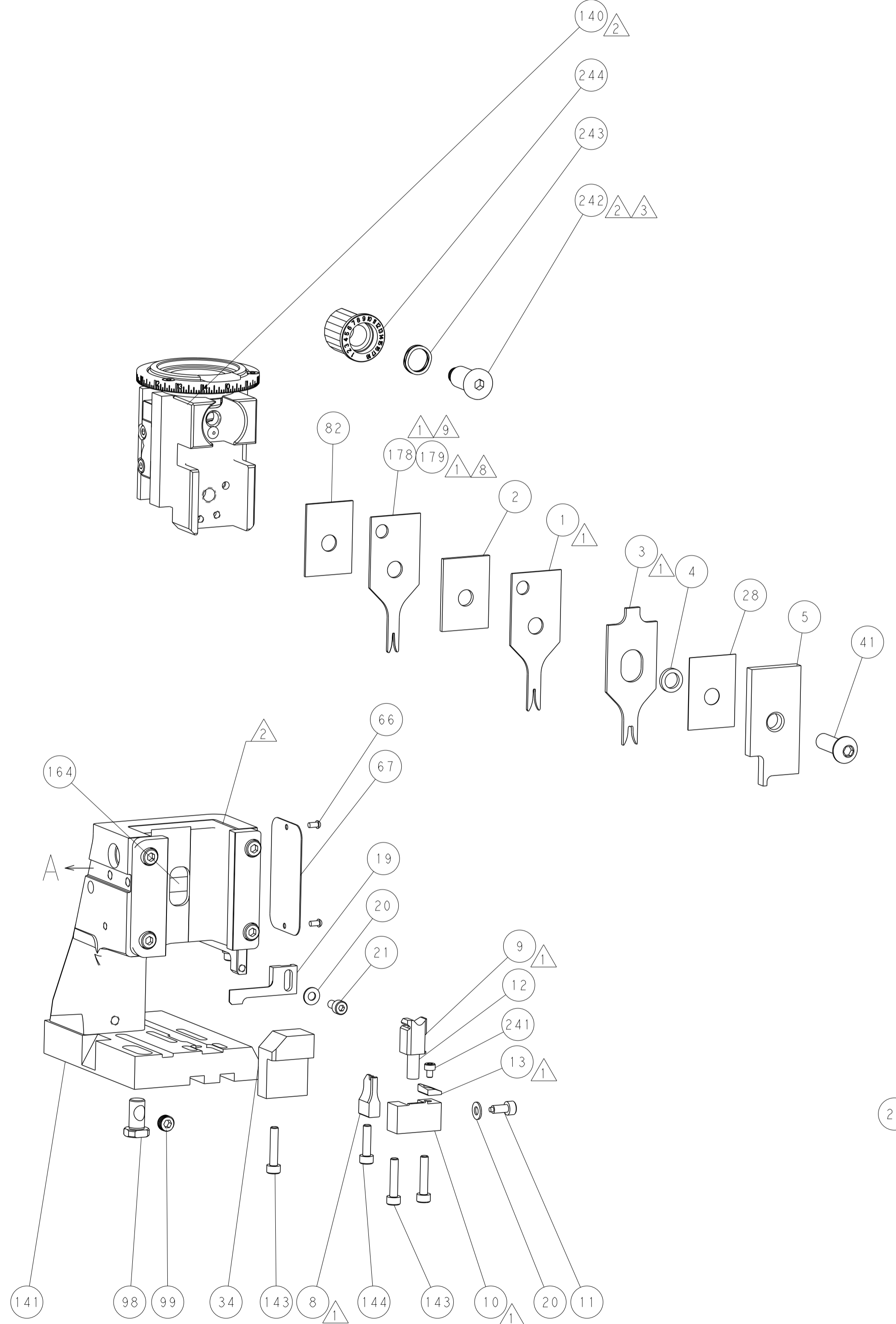
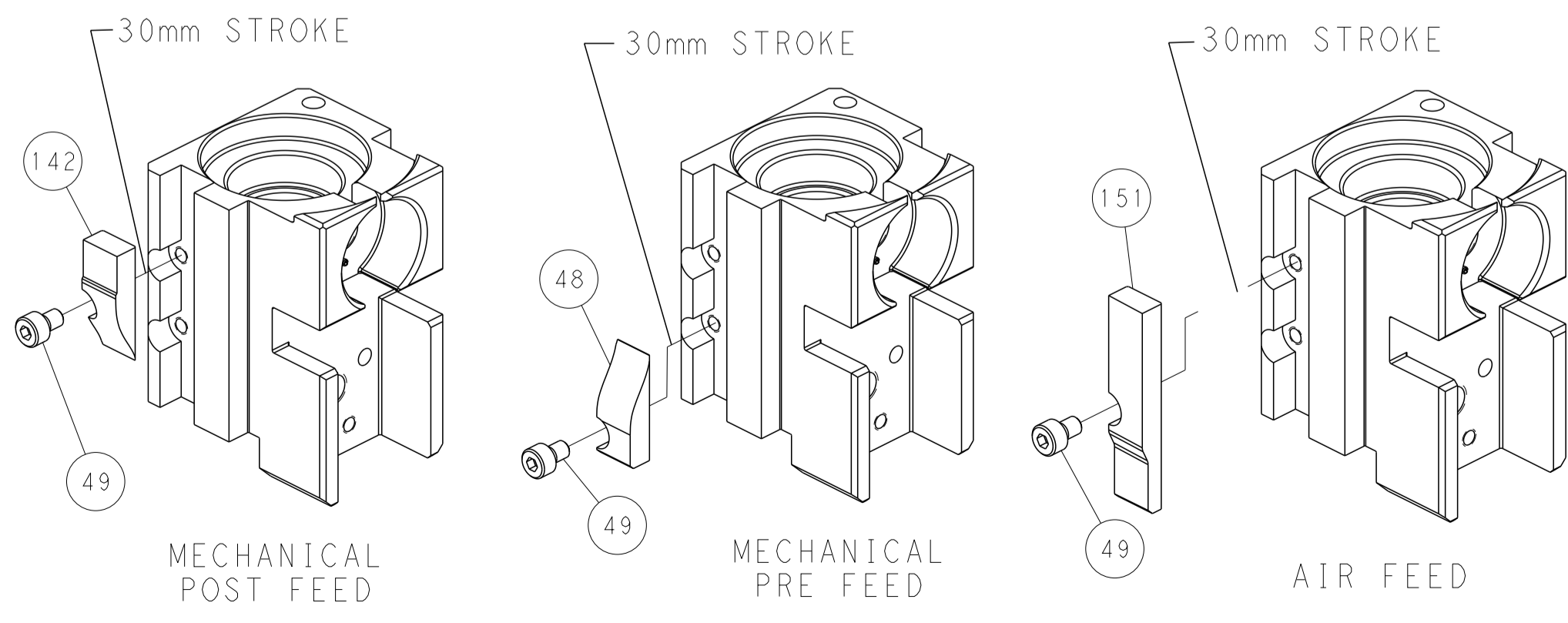
PNEUMATIC



FEED SPRING SETTING POSITION (SHOWN FROM REAR SIDE)



CAM POSITIONS



PACIFIC VERSION
 Shown on sheets 3 of 4 & 4 of 4
 (Atlantic version shown on sheets 1 of 4 & 2 of 4)

| | | | |
|---|--|---|--|
| <small>THIS DRAWING IS UNPUBLISHED. RELEASED FOR PUBLICATION. IT IS THE PROPERTY OF TYCO ELECTRONICS CORPORATION. IT IS TO BE USED ONLY FOR THE PURPOSES AND IN THE QUANTITIES SPECIFIED IN THE ORDER. IT IS TO BE RETURNED TO TYCO ELECTRONICS CORPORATION IF NOT SO USED.</small> | | DWN: HOFFNER 3JUNE2014 CHK: T.ELBIN 4JUNE2014 APVD: T.ELBIN 4JUNE2014 | TE Connectivity Harrisburg, PA 17105-3608 |
| DIMENSIONS: mm TOLERANCES UNLESS OTHERWISE SPECIFIED: 0 PLC ± 1 PLC ± 2 PLC ± 3 PLC ± 4 PLC ± ANGLES FINISH | PRODUCT SPEC APPLICATION SPEC WEIGHT SCALE: 1:2 | NAME: Ocean Side Feed Applicator SIZE: A1 CAGE CODE: 00779 DRAWING NO: C=2266321 | RESTRICTED TO: - SHEET 4 OF 4 REV E |