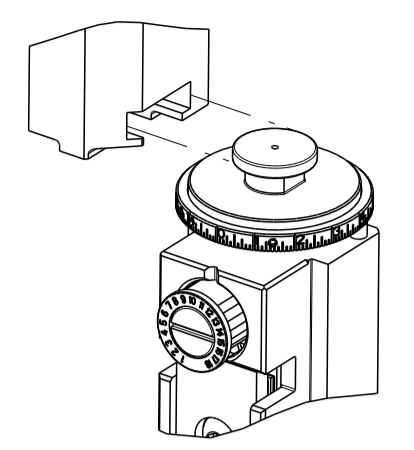


PART NUMBER	REVISION	DESCRIPTION	FEED TYPE
2266740-2	D	FINE CRIMP HEIGHT ADJUST	PNEUMATIC
7-2266740-7	A	CRIMP TOOLING KIT	-

ATLANTIC VERSION TERMINATOR
 INTERFACE ADAPTER



APPLICATOR DATA

CRIMP	SIZE	TYPE
WIRE	4.32 mm [.170]	F
INSUL	10.67 mm [.420]	O

APPLICATOR INSTRUCTIONS
 408-35042

TERMINAL DATA: TE TERMINAL TE CRIMP SPECIFICATION

TERMINAL NAME: TAB 9.5mm X 1.2mm 6qmm

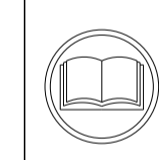
WIRE STRIP LENGTH	INSULATION DIAMETER RANGE
8.10-8.70 mm [.319-.343 IN]	∅

TERMINAL APPLICATION SPECIFICATION
 114-94407

TERMINALS APPLIED

TE TERMINAL	TE TERMINAL	TE SEAL	TE SEAL	CABLE DIAMETER
1-2287018-1		2287390-4		3.4-4.3
1-2287018-3				

WIRE SIZE	CRIMP HEIGHT mm [INCH]	CRIMP HEIGHT REFERENCE SETTING
6.00mm2	2.86 +/- 0.05 [.113 +/- .002]	5.7
4.00mm2	2.52 +/- 0.05 [.099 +/- .002]	9.4



- RECOMMENDED SPARE PARTS
- REFER TO SUPPLIED INSTRUCTION SHEET FOR CLEANING, LUBRICATION AND STORAGE OF APPLICATOR.
- APPLY PART NUMBER 2-23419-6 LOCTITE TO THREADS OF ITEM 242.
- CRIMP HEIGHT REFERENCE SETTING WAS THE SETTING USED WHEN THE APPLICATOR WAS QUALIFIED AT THE FACTORY. ADJUSTMENT MAY BE NECESSARY WHEN RUNNING APPLICATOR IN THE FIELD.
- TERMINAL PITCH NOT COMPATIBLE WITH MECHANICAL FEED
- THIS APPLICATOR APPLIES TERMINAL WITH A SEAL.
- APPLY TORQ-SEAL IN ALLEN SOCKET TO FILL HOLE AFTER FLAT HD HAS BEEN ADJUSTED TO CORRECT HEIGHT AT QUALIFICATION.
- CUT TO LENGTH AT ASSEMBLY
- 9. UNLESS SPECIFIED OTHERWISE TORQUE VALUES SHALL BE USED PER DOCUMENT, 101-35000.
- TERMINAL LUBRICANT IS RECOMMENDED

***WARNING**
 ON INSTALLATION, SET WIRE DISC TO CRIMP HEIGHT REFERENCE SETTING FOR LARGEST WIRE SIZE. CRIMP HEIGHT REFERENCE SETTINGS GREATER THAN THE VALUE SHOWN MAY CAUSE DAMAGE TO THE CRIMP TOOLING, REFER TO THE INSTRUCTION SHEET FOR PROPER SETUP AND ADJUSTMENTS.

LOC 66 DIST 66

REV	DATE	BY	CHKD	APVD
B	01OCT2018	MS	CT	
C	12JUN2019	FJ	TE	
D	22SEP2020	JWC	RK	
D1	05JUL2024	ZZ	GB	

-	1	5018030-1	NUT, HEX, REG, RoHS, M3	270
-	2	2168083-1	SCR, SKT HD CAP, RoHS, M3 X 8.0	269
-	1	1633782-7	FENCE	267
-	1	2119641-1	FEED CAM, AIR FEED	248
-	1	2119082-6	CAM, SNAIL, INSULATION ADJUSTMENT	244
-	1	2079764-1	WASHER, WAVE SPRING, CREST-TO-CREST	243
△	1	2119083-1	RETAINER, INSULATION DIAL	242
-	1	2844940-2	AIR FEED MODULE	238
-	REF	994970-2	COUNTER, MAGNETIC	164
-	1	455888-7	SPACER, CRIMPER -	120
△	1	2119955-1	ASSY, LUBRICATOR, SIDE FEED	113
-	1	2844908-1	SCREW, LOCKING	99
-	1	2844907-1	POST, LOCKING	98
-	1	455888-6	SPACER, CRIMPER -	82
-	2	2079383-4	SCR, BHSC, RoHS (M4 X 8)	79
-	1	1803096-1	EXTENSION PLATE	78
-	1	1803607-3	DOCUMENTATION PACKAGE	71
-	1	2119791-7	DEPRESSOR, WIRE	70
-	1	2119943-1	WASHER, SPACER	69
-	1	2119740-1	TAG, IDENTIFICATION	67
-	2	2168078-1	SCREW, DRIVE, RH, RoHS, 2 x .188	66
-	1	2168083-2	SCR, SKT HD CAP, RoHS, M4 X 8.0	60
-	1	5-18022-5	SCR, HEX HD CAP, M4 X 6.0	59
△	1	1-2168083-3	SCR, SKT HD CAP, RoHS, M3 X 16	57
-	1	1-1338683-1	FEED PAWL	56
-	4	2168083-3	SCR, SKT HD CAP, RoHS, M4 X 12.0	54
-	2	2168083-8	SCR, SKT HD CAP, RoHS, M4 X 16	53
-	1	5018030-1	NUT, HEX, REG, RoHS, M3	52
-	1	811242-5	BUMPER, HOLD DOWN	51
-	1	690753-2	SPACER, TONKER	50
-	1	18023-9	SCR, SKT HD CAP M4 X 6.0	49
-	1	2-1803583-6	APPLICATOR BASIC ASSEMBLY, SF	46
-	1	1803515-2	RAM ASSEMBLY, SF ATLANTIC	44
-	1	1803602-2	SCR, BHSC, RoHS (M8 X 40)	41
-	1	4-1752356-2	SUPPORT, TERMINAL	34
-	2	2079383-5	SCR, BHSC, RoHS (M4 X 20)	33
-	2	3-2844962-2	SPACER, CYLINDRICAL, STRIP GUIDE	30
-	1	2844992-5	ASSEMBLY, STRIP GUIDE -	29
-	1	3-455888-7	SPACER, CRIMPER -	28
-	2	1-22284-0	SPRING, COMPRESSION	27
-	1	240792-1	DRAG, TERMINAL	25
-	1	1320928-2	STRIP GUIDE -	24
-	1	1-690438-0	FRONT STRIP GUIDE	23
-	1	2168083-2	SCR, SKT HD CAP, RoHS, M4 X 8.0	21
-	2	1-18028-2	WASHER, FLAT, REG M4	20
-	1	1803013-1	STRIPPER, SIDE FEED	19
-	1	3-22280-3	SPRING, COMPRESSION	12
-	1	1-356885-3	STOP, SHEAR	11
△	1	2-2119805-3	SHEAR HOLDER, FRONT -	10
△	1	1-318059-3	FLOATING SHEAR, FRONT	9
△	1	7-1633930-5	ANVIL, COMBINATION	8
-	1	240641-4	SPACER	7
-	-	-	-	6
-	1	1-1803080-2	DEPRESSOR, SHEAR	5
-	1	4-238011-4	BLOCK, CRIMPER SPACER	4
△	1	9-1633965-7	CRIMPER, INSULATION O PREMIUM	3
-	1	455888-8	SPACER, CRIMPER -	2
△	1	1633773-6	CRIMPER, WIRE, STEP	1
-	-77	-2	PART NO	ITEM NO

THIS DRAWING IS UNPUBLISHED. RELEASED FOR PUBLICATION. IT IS THE BUYER'S RESPONSIBILITY TO CONTACT THE SUPPLIER FOR THE LATEST REVISIONS. SHOULD BE CONTACTED FOR THE LATEST REVISION.

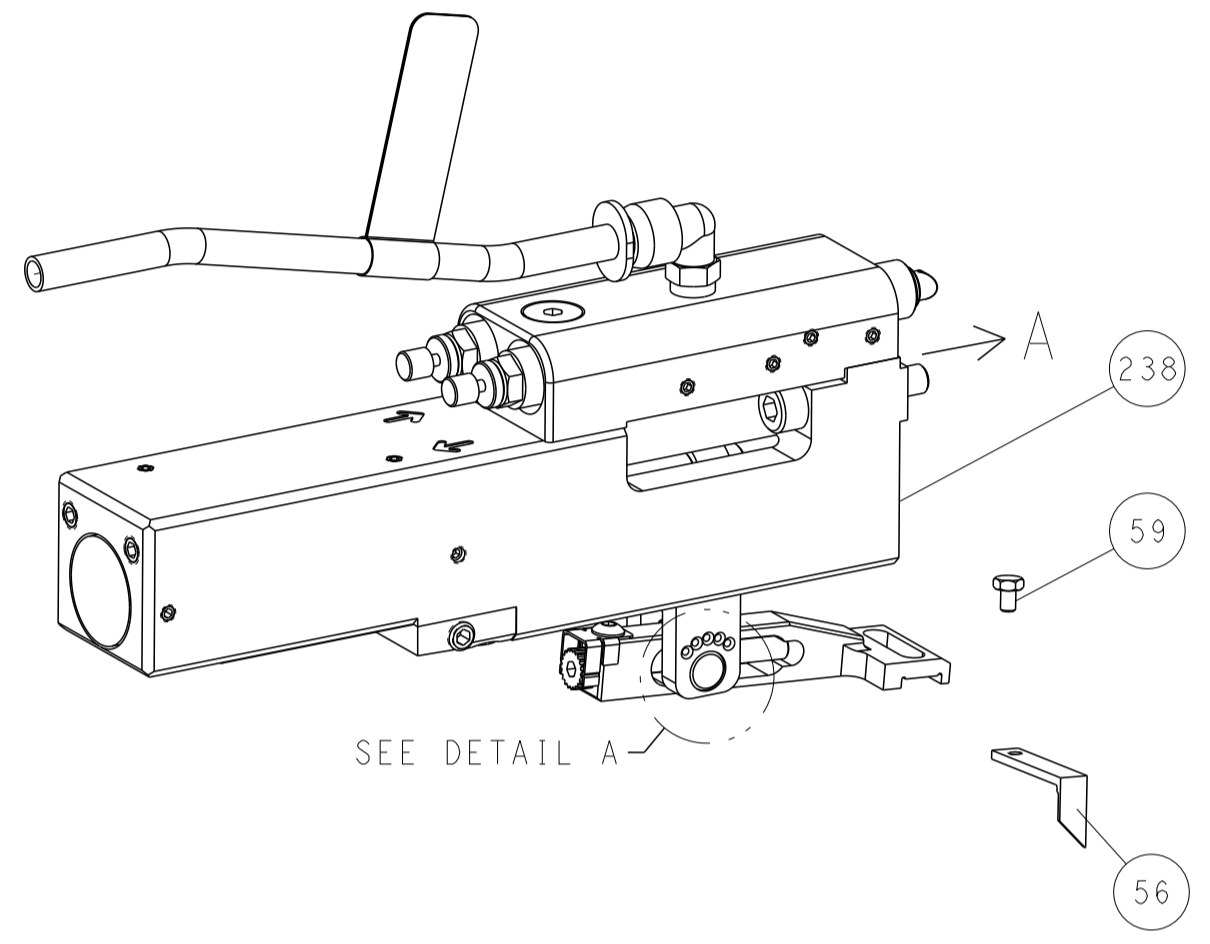
DIMENSIONS:	TOLERANCES UNLESS OTHERWISE SPECIFIED:	0 PLC ±	1 PLC ±	2 PLC ±	3 PLC ±	4 PLC ±	ANGLES ±	FINISH
mm								
MATERIAL		WEIGHT	APVD	NAME	SIZE	CAGE CODE	DRAWING NO	RESTRICTED TO
			T. ELBIN	T. ELBIN	A1	00779	2266740	
			Customer Accessible Production Drawing		SCALE	1:2	SHEET	1 OF 4

Customer Accessible Production Drawing SCALE 1:2 SHEET 1 OF 4 REV D1

LOC	DIST	REVISIONS					
A	66	P	LTN	DESCRIPTION	DATE	OWN	APVD
		-		SEE SHEET 1	-	-	-

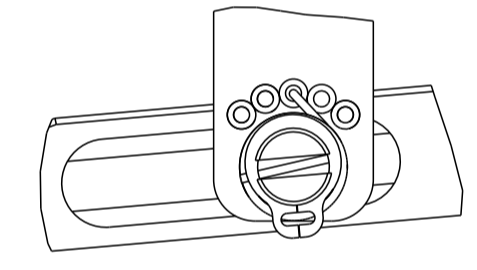
FEED TYPE

PNEUMATIC



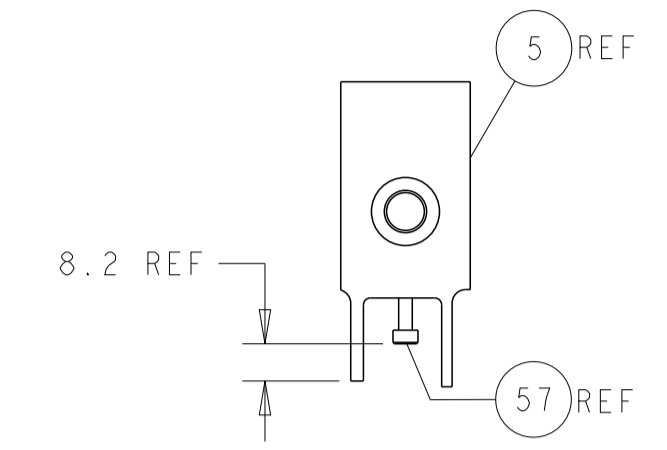
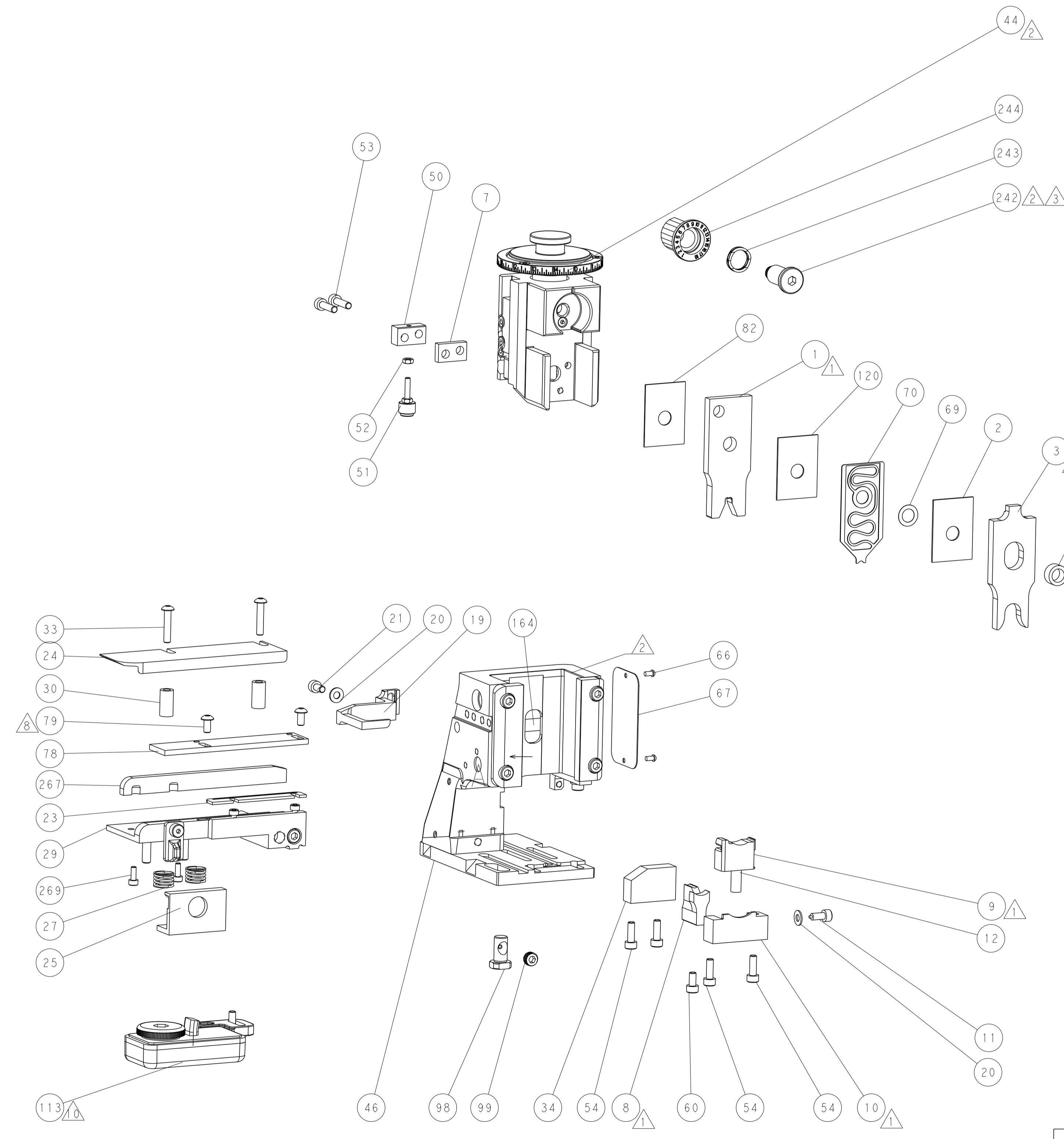
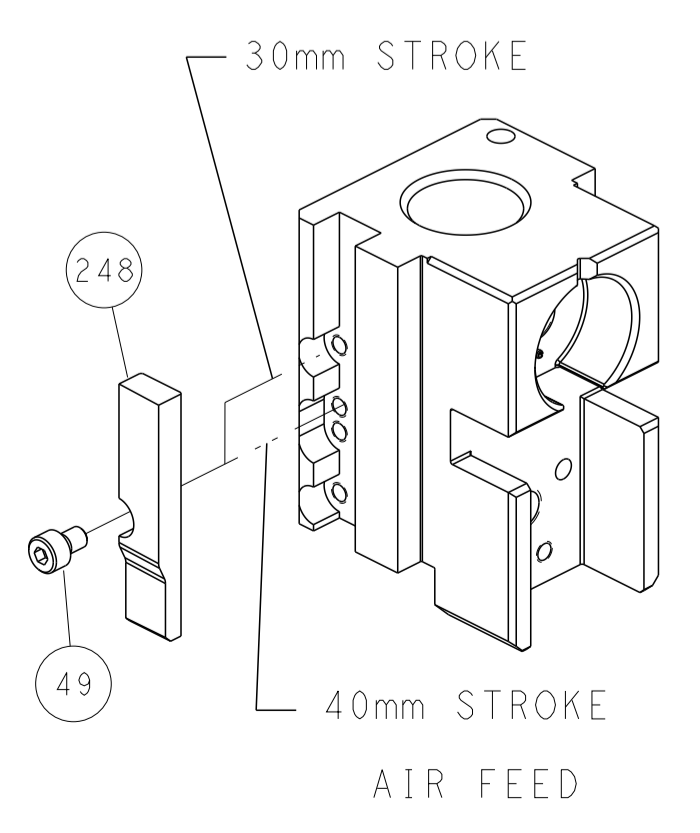
SEE DETAIL A

FEED SPRING SETTING POSITION (SHOWN FROM REAR SIDE)

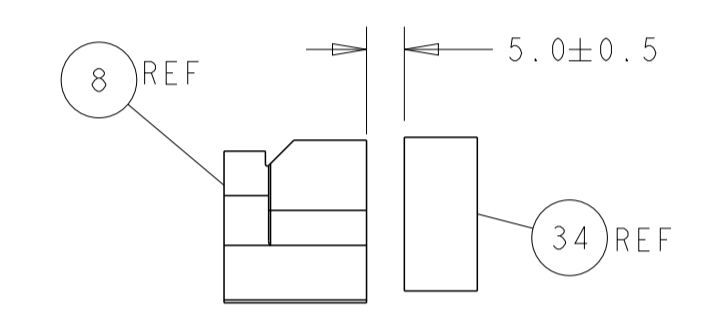


DETAIL A

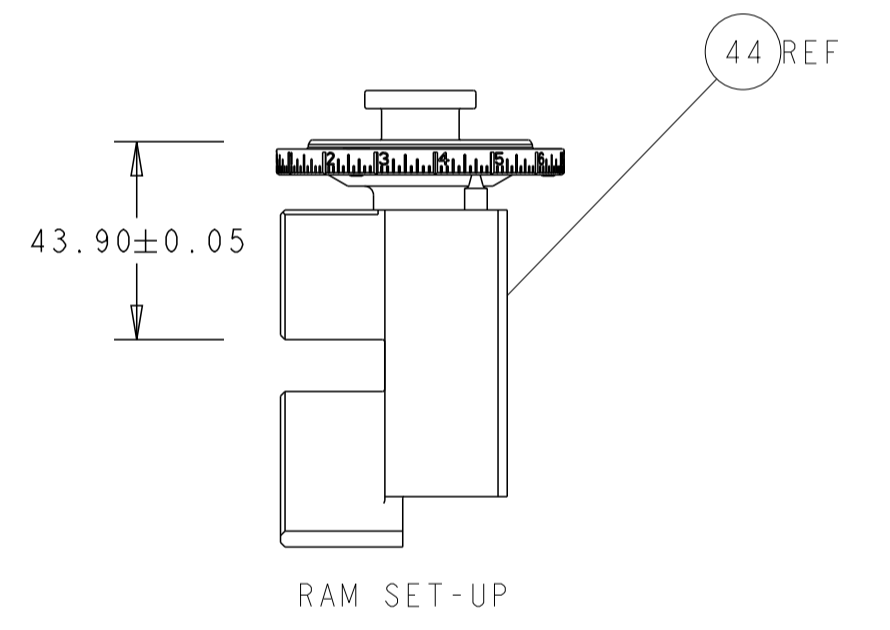
CAM POSITION



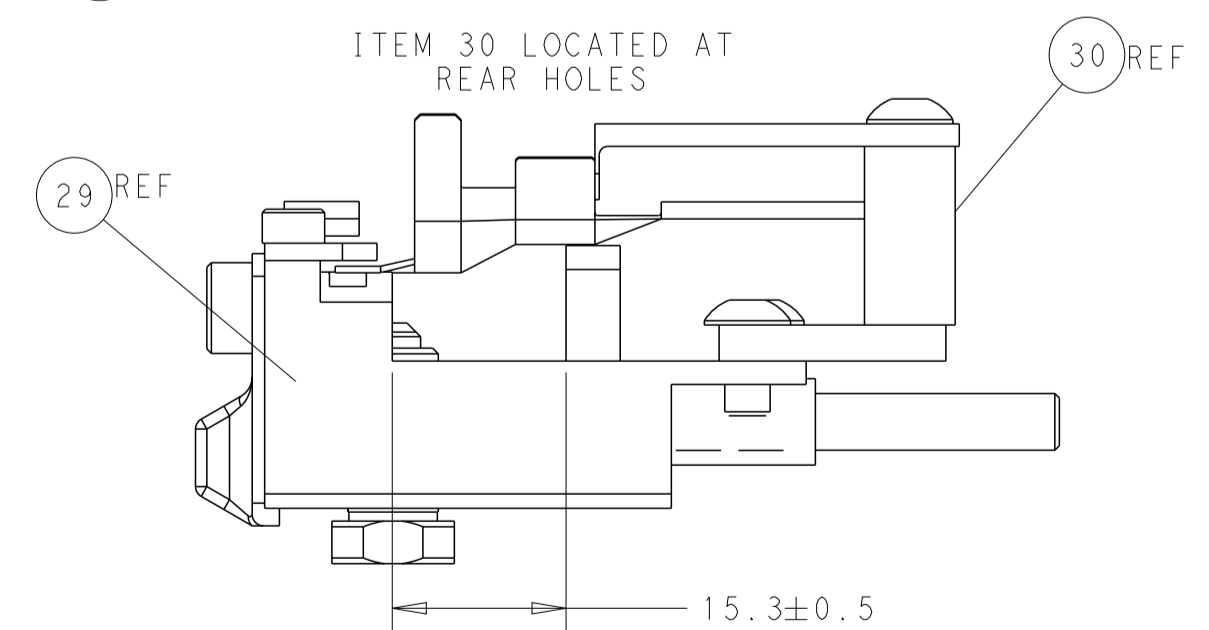
SHEAR DEPRESSOR DETAIL



TERMINAL SUPPORT LOCATION



RAM SET-UP



FEED TRACK POSITION GUIDE BY WIRE BARREL

DIMENSIONS: mm 		TOLERANCES UNLESS OTHERWISE SPECIFIED: 0 PLC ± 1 PLC ± 2 PLC ± 3 PLC ± 4 PLC ± ANGLES ± FINISH		DWN BOB HIGMAN 29APR2015 CHK T. ELBIN 29APR2015 APVD T. ELBIN 29APR2015 PRODUCT SPEC APPLICATION SPEC SIZE CAGE CODE DRAWING NO A1 00779 C=2266740 RESTRICTED TO	
MATERIAL:		WEIGHT:		NAME: Ocean Side Feed Applier SCALE: 1:2 SHEET 2 OF 4 REV D1	