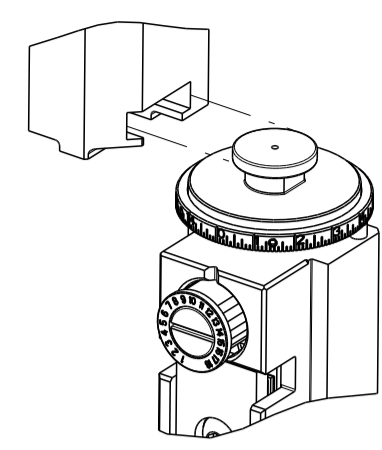


PART NUMBER	REVISION	DESCRIPTION	FEED TYPE
2266747-1	B	FINE CRIMP HEIGHT ADJUST	MECHANICAL
2266747-2	B	FINE CRIMP HEIGHT ADJUST	PNEUMATIC
7-2266747-7	B	CRIMP TOOLING KIT	-

ATLANTIC VERSION TERMINATOR
 INTERFACE ADAPTER



APPLICATOR DATA

CRIMP	SIZE	TYPE
WIRE	2.29 mm [.090]	F
INSUL	3.56 mm [.140]	F

APPLICATOR INSTRUCTIONS
 408-35042

TERMINAL DATA: TE TERMINAL TE CRIMP SPECIFICATION

TERMINAL NAME: RECEPTACLE & TAB, FASTON .187 SERIES

WIRE STRIP LENGTH	INSULATION DIAMETER RANGE
3.62-4.38 mm [.143-.173 IN]	Ø1.52-2.79 mm [.060-.110 IN]

TERMINAL APPLICATION SPECIFICATION

TE TERMINAL	TE TERMINAL	TE TERMINAL	TE TERMINAL
62139-1			

WIRE SIZE	CRIMP HEIGHT mm [INCH]	CRIMP HEIGHT REFERENCE SETTING
16 AWG	1.55 +/- 0.05 [.061 +/- .002]	5.2
18 AWG	1.35 +/- 0.05 [.053 +/- .002]	7.2
20 AWG	1.24 +/- 0.05 [.049 +/- .002]	8.5

- 1. RECOMMENDED SPARE PARTS
- 2. REFER TO SUPPLIED INSTRUCTION SHEET FOR CLEANING, LUBRICATION AND STORAGE OF APPLICATOR.
- 3. APPLY PART NUMBER 2-23419-6 LOCTITE TO THREADS OF ITEM 242.
- 4. CRIMP HEIGHT REFERENCE SETTING WAS THE SETTING USED WHEN THE APPLICATOR WAS QUALIFIED AT THE FACTORY. ADJUSTMENT MAY BE NECESSARY WHEN RUNNING APPLICATOR IN THE FIELD.
- 5. UNLESS SPECIFIED OTHERWISE TORQUE VALUES SHALL BE USED PER DOCUMENT, 101-35000.
- 6. TERMINAL LUBRICANT IS RECOMMENDED.

****WARNING**
 ON INSTALLATION, SET WIRE DISC TO CRIMP HEIGHT REFERENCE SETTING FOR LARGEST WIRE SIZE. CRIMP HEIGHT REFERENCE SETTINGS GREATER THAN THE VALUE SHOWN MAY CAUSE DAMAGE TO THE CRIMP TOOLING, REFER TO THE INSTRUCTION SHEET FOR PROPER SETUP AND ADJUSTMENTS.

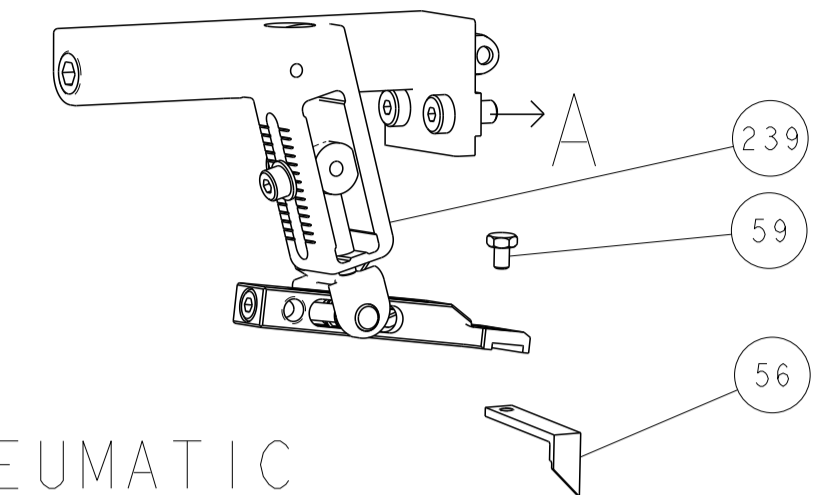
LOC	DIST	REV	DATE	BY	CHK	APPD
A	66	A	09JUN2015	MZ	KZ	
		B	23APR2024	SS	RR	

QTY	UNIT	DESCRIPTION	DATE	BY	CHK	APPD
-	1	1-1803945-3 TONKER -				300
-	1	22278-9 SPRING, COMPRESSION				299
-	2	4-18032-3 SCR, SET, FLT PNT, M3 X 6.0				298
-	1	1803944-1 SPACER, TONKER				297
-	1	2119641-1 FEED CAM, AIR FEED				248
-	1	2119082-3 CAM, SNAIL, INSULATION ADJUSTMENT				244
-	1	2079764-1 WASHER, WAVE SPRING, CREST-TO-CREST				243
3	1	2119083-1 RETAINER, INSULATION DIAL				242
-	1	7-18023-7 SCR, SKT HD CAP M3 X 4.0				241
-	-	2119580-1 MECHANICAL FEED ASSEMBLY				239
-	1	2844940-1 AIR FEED MODULE				238
-	REF	994970-2 COUNTER, MAGNETIC				164
6	1	2119955-1 ASSY, LUBRICATOR, SIDE FEED				113
-	1	2844908-1 SCREW, LOCKING				99
-	1	2844907-1 POST, LOCKING				98
-	1	455888-5 SPACER, CRIMPER -				82
-	1	1803607-3 DOCUMENTATION PACKAGE				71
-	1	2119791-9 DEPRESSOR, WIRE				70
-	1	2119740-1 TAG, IDENTIFICATION				67
-	2	2168078-1 SCREW, DRIVE, RH, RoHS, 2 x .188				66
-	1	2168083-2 SCR, SKT HD CAP, RoHS, M4 X 8.0				60
-	1	5-18022-5 SCR, HEX HD CAP, M4 X 6.0				59
-	1	1338683-8 FEED PAWL				56
-	4	2168083-3 SCR, SKT HD CAP, RoHS, M4 X 12.0				54
-	2	2-2168083-5 SCR, SKT HD CAP, RoHS, M4 X 14				53
-	1	18023-9 SCR, SKT HD CAP M4 X 6.0				49
-	-	2119652-1 FEED CAM, PRE FEED				48
-	-	2119653-1 FEED CAM, POST FEED				47
-	1	1803583-9 APPLICATOR BASIC ASSEMBLY, SF				46
-	1	1803515-1 RAM ASSEMBLY, SF ATLANTIC				44
-	1	2079383-7 SCR, BHSC, RoHS (M8 X 25)				41
-	1	1-1752356-1 SUPPORT, TERMINAL				34
-	2	2079383-5 SCR, BHSC, RoHS (M4 X 20)				33
-	2	2-2844962-8 SPACER, CYLINDRICAL, STRIP GUIDE				30
-	1	2844992-1 ASSEMBLY, STRIP GUIDE -				29
-	1	455888-3 SPACER, CRIMPER -				28
-	1	1320928-2 STRIP GUIDE -				24
-	1	2168083-2 SCR, SKT HD CAP, RoHS, M4 X 8.0				21
-	2	1-18028-2 WASHER, FLAT, REG M4				20
-	1	2119533-1 STRIPPER, SIDE FEED				19
1	1	2119806-1 INSERT, SHEAR				13
-	1	3-22280-3 SPRING, COMPRESSION				12
-	1	1-356885-4 STOP, SHEAR				11
1	1	2119805-1 SHEAR HOLDER, FRONT -				10
1	1	1803095-6 FLOATING SHEAR, FRONT -				9
1	1	8-1633932-8 ANVIL, COMBINATION				8
-	1	240641-5 SPACER				7
-	-	-				6
-	1	2119757-4 DEPRESSOR, SHEAR				5
-	1	5-238011-5 BLOCK, CRIMPER SPACER				4
1	1	3-1633961-0 CRIMPER, INSULATION F PREMIUM				3
-	1	455888-1 SPACER, CRIMPER -				2
1	1	4-456406-7 CRIMPER, WIRE PREMIUM				1

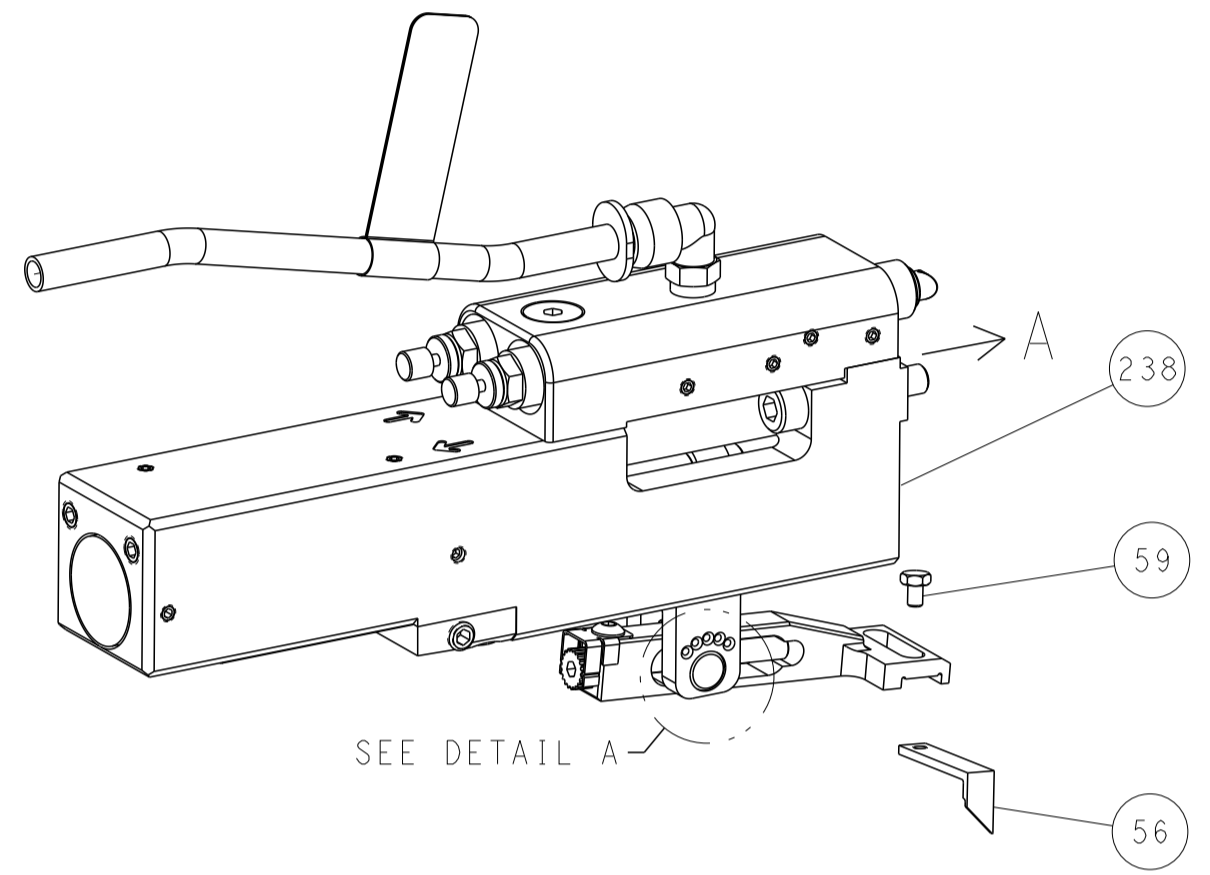
DIMENSIONS:		TOLERANCES UNLESS OTHERWISE SPECIFIED:		DWG		CHK		APPD		NAME	
mm		0 PLC ±		X ZHAO		L ZHANG		J GUO		Ocean Side Feed Applicator	
1 PLC ±		2 PLC ±		09JUN2015		09JUN2015		09JUN2015		TE Connectivity	
3 PLC ±		4 PLC ±								Harrisburg, PA 17105-3608	
5 PLC ±		ANGLES ±								Customer Accessible Production Drawing	
FINISH		FINISH		WEIGHT		SCALE		SHEET		REV	
				A 00779		1:2		1 of 4		B	

LOC	DIST	REVISIONS					
		P	LTN	DESCRIPTION	DATE	DWN	APVD
A	66	-	-	SEE SHEET 1	-	-	-

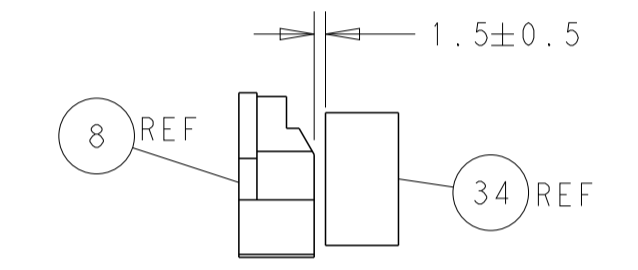
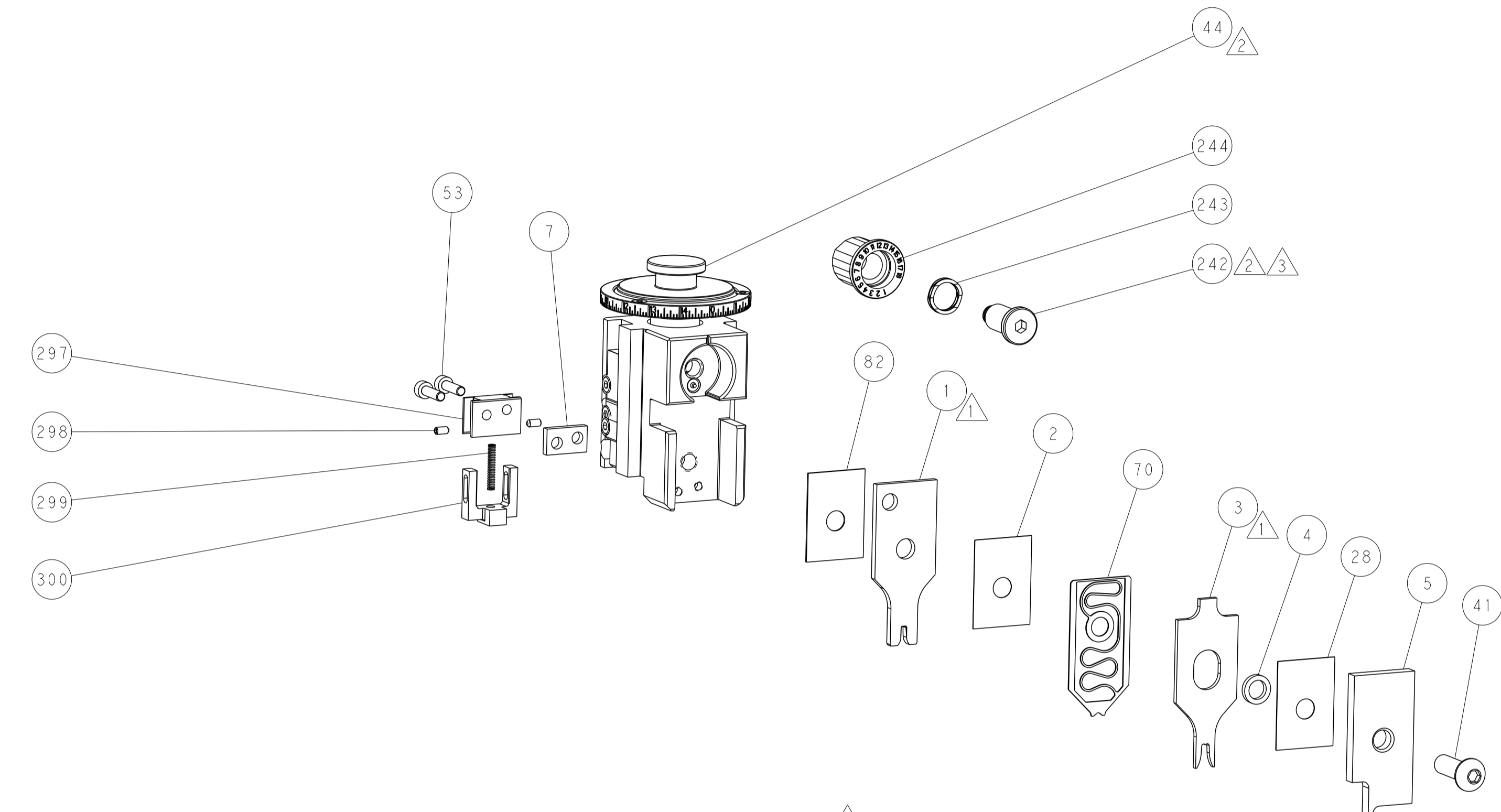
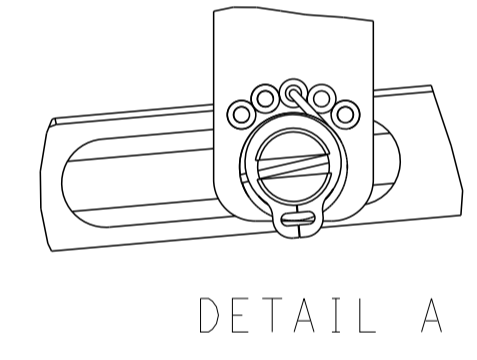
FEED TYPE MECHANICAL



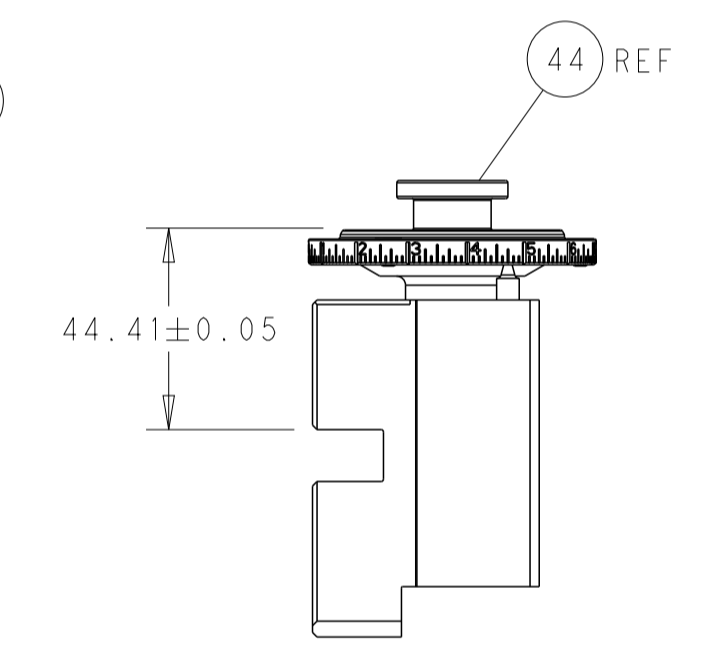
PNEUMATIC



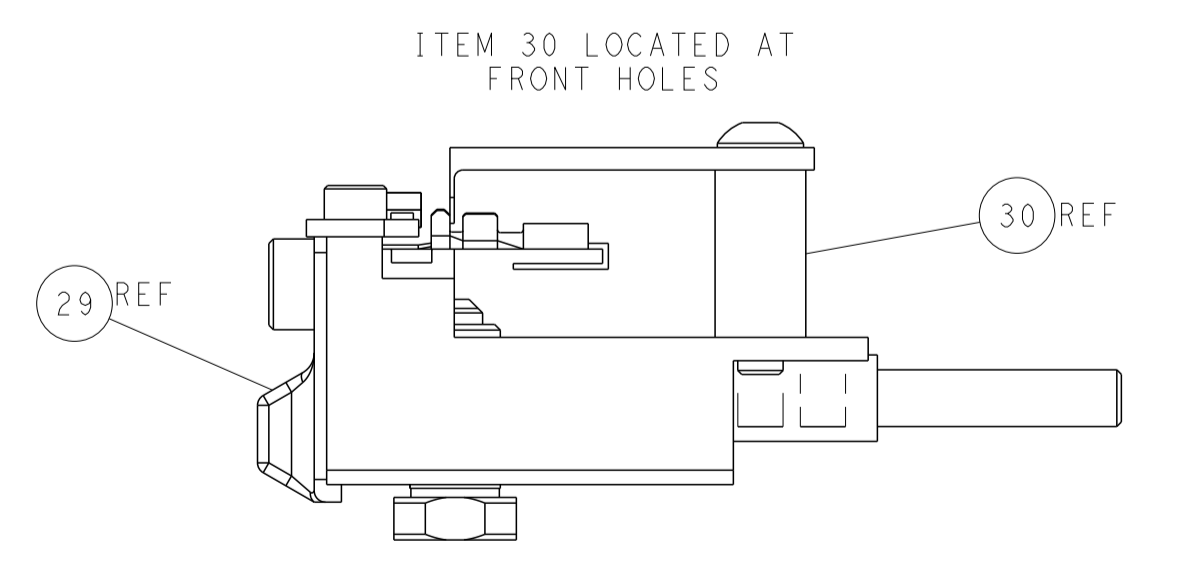
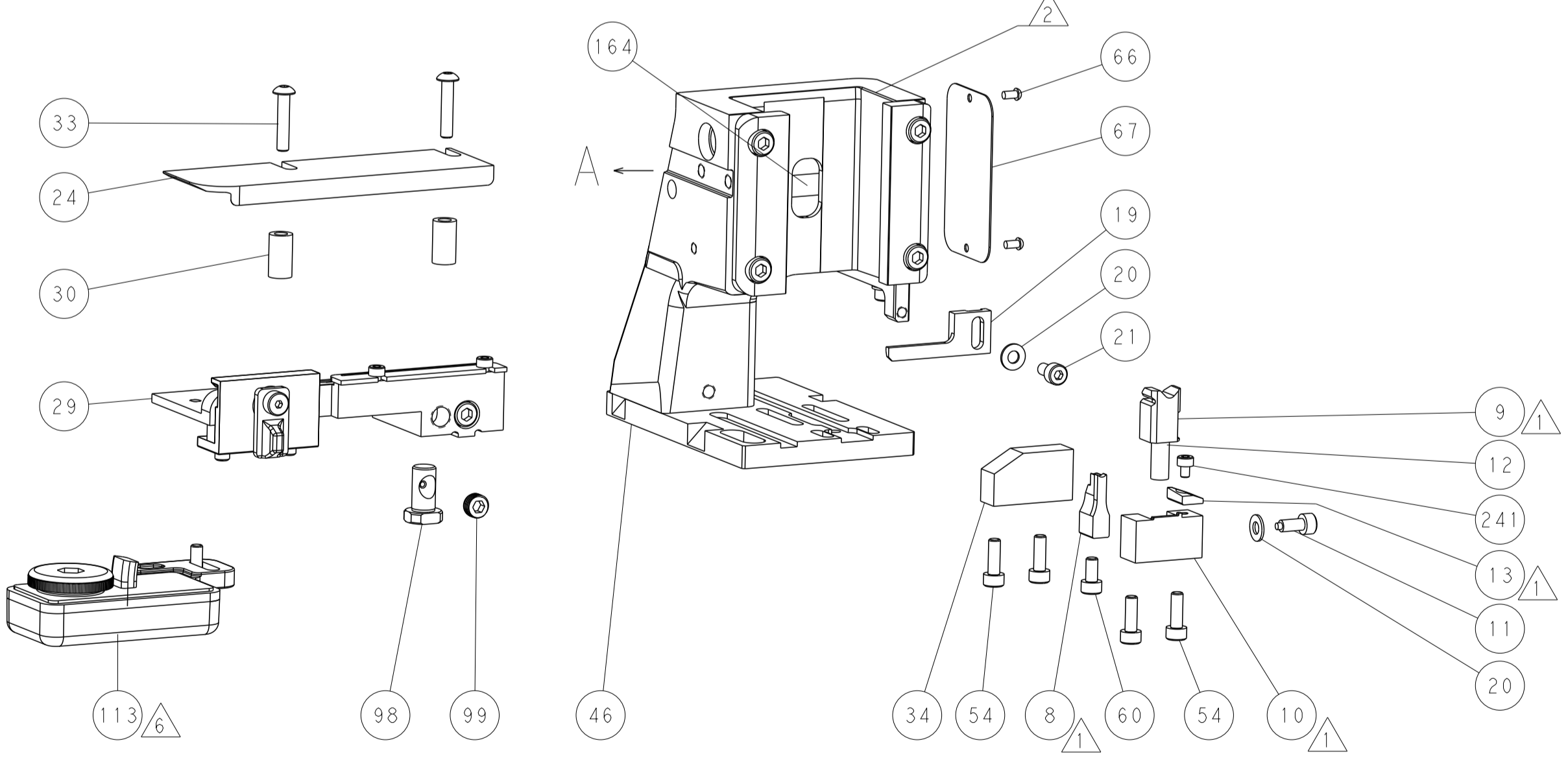
FEED SPRING SETTING POSITION (SHOWN FROM REAR SIDE)



TERMINAL SUPPORT LOCATION

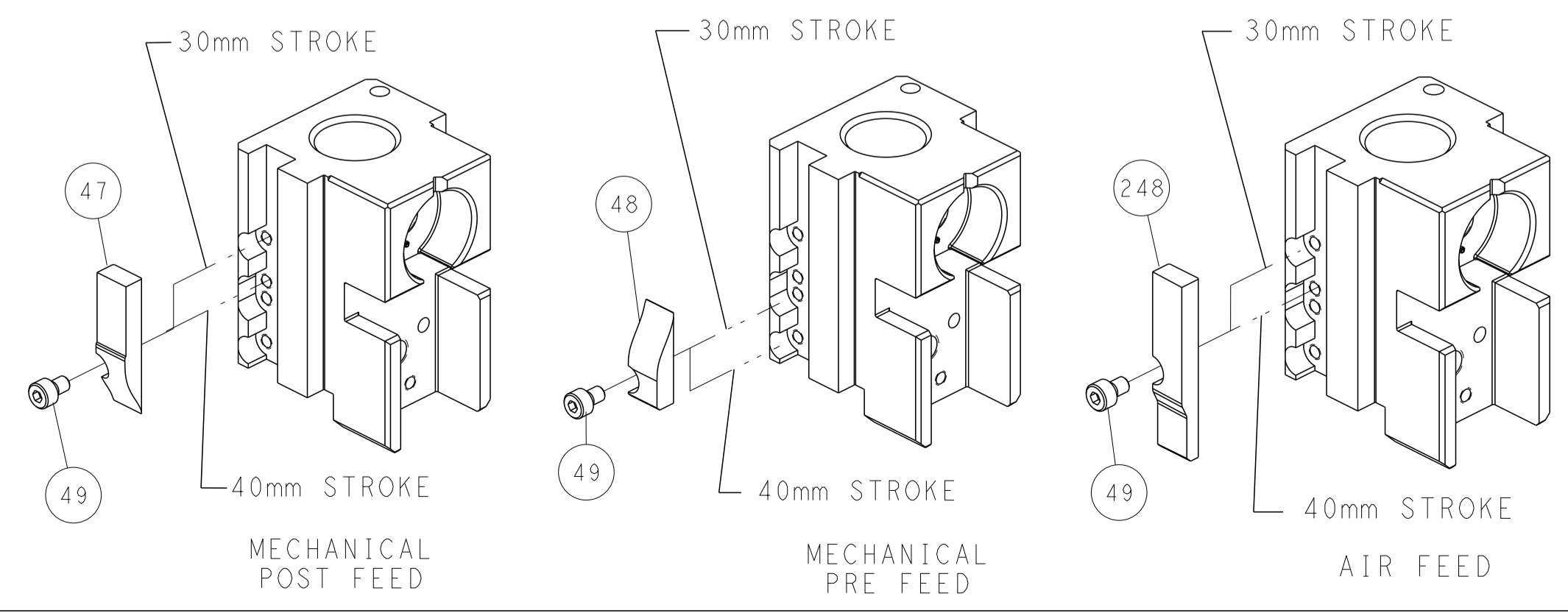


RAM SET-UP



FEED TRACK POSITION GUIDE BY INSULATION BARREL

CAM POSITIONS



DIMENSIONS: mm 		TOLERANCES UNLESS OTHERWISE SPECIFIED: 0 PLC ± 1 PLC ± 2 PLC ± 3 PLC ± 4 PLC ± ANGLES ± FINISH		DWN X ZHAO 09JUN2015 CHK L ZHANG 09JUN2015 APVD JJ GUO 09JUN2015 NAME Ocean Side Feed Applicator SIZE CAGE CODE DRAWING NO RESTRICTED TO A 00779 C=2266747 Customer Accessible Production Drawing SCALE 1:2 SHEET 2 OF 4 REV B	
THIS IS DRAWING IS CONTROLLED DOCUMENT FOR THE ELECTRONICS CORPORATION. IT IS THE USER'S RESPONSIBILITY TO CONTACT THE COMPANY FOR THE LATEST REVISION.				TE Connectivity Harrisburg, PA 17105-3608	