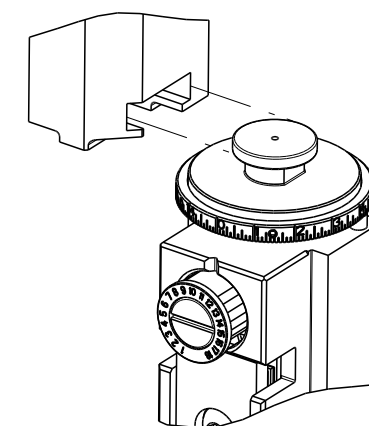


PART NUMBER	REVISION	DESCRIPTION	FEED TYPE
2266802-2	H	FINE CRIMP HEIGHT ADJUST	PNEUMATIC
7-2266802-2	H	PNEUMATIC AND CRIMP TOOLING KIT	PNEUMATIC
7-2266802-7	H	CRIMP TOOLING KIT	-

ATLANTIC VERSION TERMINATOR INTERFACE ADAPTER



APPLICATOR DATA		
CRIMP	SIZE	TYPE
WIRE	0.61 mm [.024]	F
INSUL	0.61 mm [.024]	F

APPLICATOR INSTRUCTIONS 408-35042

TERMINAL DATA: HIROSE TERMINAL HIROSE CRIMP SPECIFICATION			
TERMINAL NAME: TERMINAL			
WIRE STRIP LENGTH	INSULATION DIAMETER RANGE		
1.50-1.90 mm [.059-.075 IN]	Ø0.60-0.88 mm [.024-.035 IN]		
TERMINAL APPLICATION SPECIFICATION	TAD-P-0506 Rev 1		
TERMINALS APPLIED			
TE TERMINAL	HIROSE TERMINAL	TE TERMINAL	HIROSE TERMINAL
2113715-1	DF50-2830SCFA		

WIRE SIZE	CRIMP HEIGHT mm [INCH]	CRIMP HEIGHT REFERENCE SETTING
28 AWG	0.48 +/- 0.02 [.019 +/- .001]	4.3
30 AWG	0.44 +/- 0.02 [.017 +/- .001]	4.7

- RECOMMENDED SPARE PARTS
- REFER TO SUPPLIED INSTRUCTION SHEET FOR CLEANING, LUBRICATION AND STORAGE OF APPLICATOR.
- APPLY PART NUMBER 2-23419-6 LOCTITE TO THREADS OF ITEM 242.
- CRIMP HEIGHT REFERENCE SETTING WAS THE SETTING USED WHEN THE APPLICATOR WAS QUALIFIED AT THE FACTORY. ADJUSTMENT MAY BE NECESSARY WHEN RUNNING APPLICATOR IN THE FIELD.
- TERMINAL PITCH NOT COMPATIBLE WITH MECHANICAL FEED.
- UNLESS SPECIFIED OTHERWISE TORQUE VALUES SHALL BE USED PER DOCUMENT, 101-35000.
- INSULATION DIAMETER RANGE DOES NOT MEET HIROSE SPECIFICATION.
- TERMINAL LUBRICANT IS RECOMMENDED.
- GRIND TO LENGTH AT ASSEMBLY.

**\*WARNING**  
ON INSTALLATION, SET WIRE DISC TO CRIMP HEIGHT REFERENCE SETTING FOR LARGEST WIRE SIZE. CRIMP HEIGHT REFERENCE SETTINGS GREATER THAN THE VALUE SHOWN MAY CAUSE DAMAGE TO THE CRIMP TOOLING. REFER TO THE INSTRUCTION SHEET FOR PROPER SETUP AND ADJUSTMENTS.

LOC	DIST	REVISIONS					
		P	LTN	DESCRIPTION	DATE	OWN	APVD
A	66	E1		ECR-19-007131	05MAY2019	FZ	CT
		F		ECR-19-008304	24MAY2019	RK	CT
		G		ECR-21-002833	05MAR2021	FJ	TE
		H		ECR-21-007146	04AUG2021	JAH	TE

-	1	1	2119641-1	FEED CAM, AIR FEED	248
-	1	1	2119082-5	CAM, SNAIL, INSULATION ADJUSTMENT	244
-	1	1	2079764-1	WASHER, WAVE SPRING, CREST-TO-CREST	243
-	1	1	2119083-1	RETAINER, INSULATION DIAL	242
-	1	1	2844940-1	AIR FEED MODULE	238
-	1	1	455053-2	PLATE, RETAINING	180
-	1	1	4-21028-0	PIN, SLOTTED SPRING .094 X .750	177
-	2	2	22278-2	COMPRESSION SPRING	176
-	1	1	1803129-1	PLATE, RETAINER	175
-	REF	REF	994970-2	COUNTER, MAGNETIC	164
-	1	1	2119955-1	ASSY, LUBRICATOR, SIDE FEED	113
-	1	1	2844908-1	SCREW, LOCKING	99
-	1	1	2844907-1	POST, LOCKING	98
-	1	1	1803607-3	DOCUMENTATION PACKAGE	71
-	1	1	1-2119791-4	DEPRESSOR, WIRE	70
-	1	1	2119740-1	TAG, IDENTIFICATION	67
-	2	2	2168078-1	SCREW, DRIVE, RH, RoHS, 2 x .188	66
-	1	1	2161425-1	SCREW, SHOULDER	60
-	1	1	5-18022-5	SCR, HEX HD CAP, M4 X 6.0	59
-	1	1	1338685-1	PAWL, FEED	56
-	2	2	2168083-3	SCR, SKT HD CAP, RoHS, M4 X 12.0	54
-	2	2	1-2168083-2	SCR, SKT HD CAP, RoHS, M4 X 25	53
-	1	1	18031-1	SCR, SET, CUP POINT M3 X 5.0	52
-	1	1	1-1803342-0	HOLDER, TERMINAL	51
-	1	1	1803202-1	CARRIER, HOLD DOWN	50
-	1	1	18023-9	SCR, SKT HD CAP M4 X 6.0	49
-	1	1	2-1803583-5	APPLICATOR BASIC ASSEMBLY, SF	46
-	1	1	1803515-4	RAM ASSEMBLY, SF ATLANTIC	44
-	1	1	1803602-1	SCR, BHSC, RoHS (M8 X 25)	41
-	2	2	2079383-5	SCR, BHSC, RoHS (M4 X 20)	33
-	2	2	2-2844962-3	SPACER, CYLINDRICAL, STRIP GUIDE	30
-	1	1	2844992-1	ASSEMBLY, STRIP GUIDE	29
-	1	1	1320928-2	STRIP GUIDE	24
-	1	1	2168083-2	SCR, SKT HD CAP, RoHS, M4 X 8.0	21
-	2	2	1-18028-2	WASHER, FLAT, REG M4	20
-	1	1	1803338-2	STRIPPER, SIDE FEED	19
-	1	1	3-22280-3	SPRING, COMPRESSION	12
-	1	1	1-2168083-0	SCR, SKT HD CAP, RoHS, M4 X 10	11
-	1	1	2119805-1	SHEAR HOLDER, FRONT	10
-	1	1	1803095-7	FLOATING SHEAR, FRONT	9
-	1	2	1-1803200-1	ANVIL, COMBINATION	8
-	-	-	-	-	7
-	-	-	-	-	6
-	1	1	1-2119757-8	DEPRESSOR, SHEAR	5
-	1	1	5-238011-3	BLOCK, CRIMPER SPACER	4
-	1	2	1-1803692-1	CRIMPER, INSULATION F PREMIUM	3
-	-	-	-	-	2
-	1	2	1-1803193-1	CRIMPER, WIRE PREMIUM	1

ATLANTIC VERSION  
Shown on sheets 1 of 4 & 2 of 4  
(Pacific version shown on sheets 3 of 4 & 4 of 4)

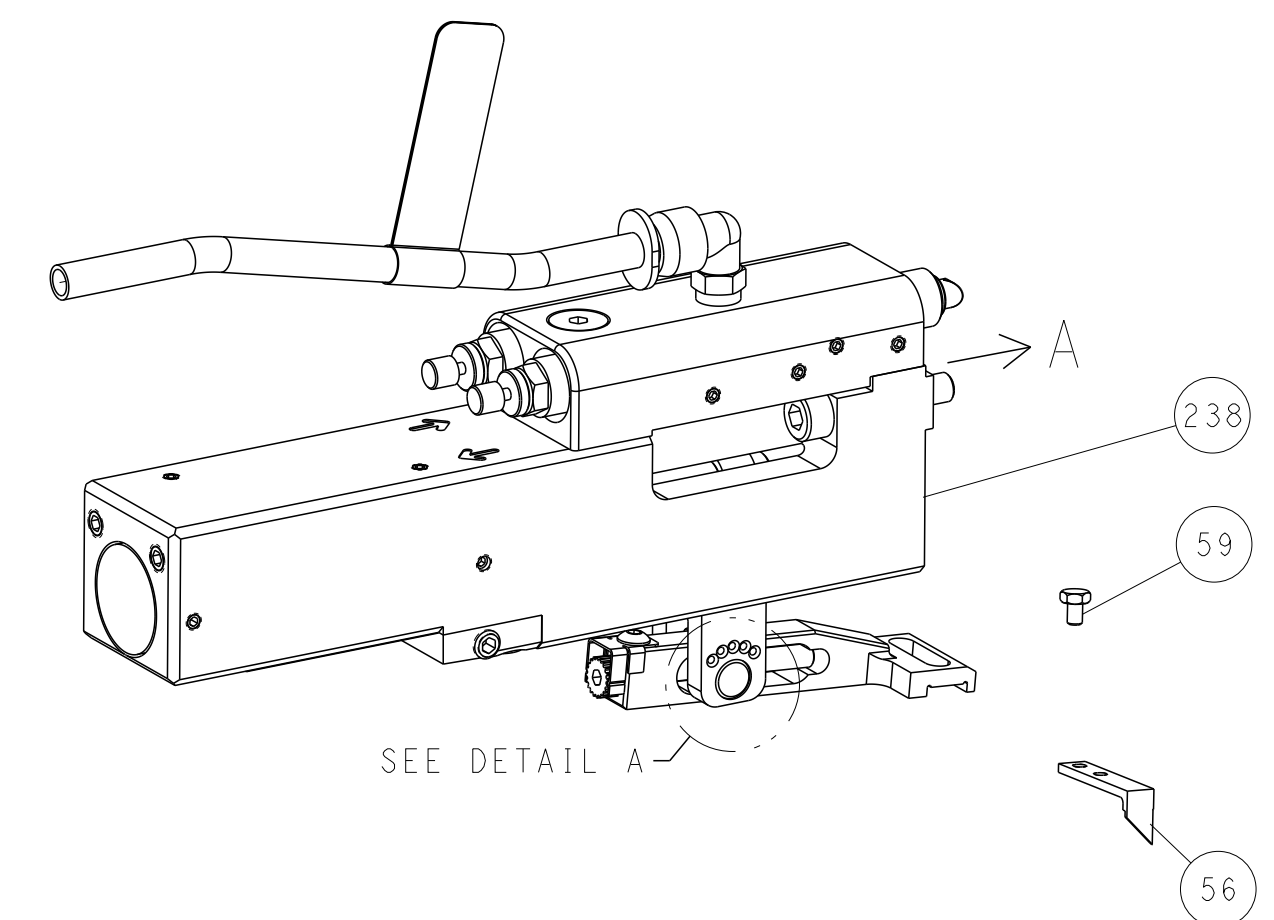
DIMENSIONS:		TOLERANCES UNLESS OTHERWISE SPECIFIED:		MATERIAL:		FINISH:	
mm	0 PLC ±	1 PLC ±	2 PLC ±	3 PLC ±	4 PLC ±	ANGLES ±	FINISH ±

OWN	J. HOU	26MAY2015	TE Connectivity
CHK	L. ZHANG	26MAY2015	Harrisburg, PA 17105-3608
APVD	J. GUO	26MAY2015	
NAME	Ocean Side Feed Applicator		
PRODUCT SPEC			
APPLICATION SPEC			
SIZE	CAGE CODE	DRAWING NO	RESTRICTED TO
A1	00779	2266802	
Customer Accessible Production Drawing			SCALE 1:2 SHEET 1 OF 4 REV H

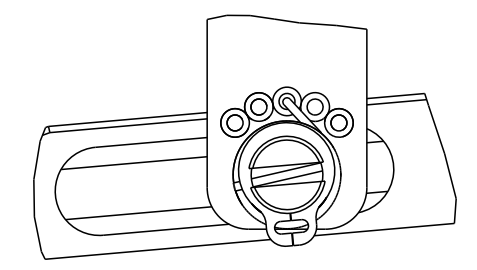
LOC	DIST	REVISIONS					
A	66	P	LTN	DESCRIPTION	DATE	OWN	APVD
		-		SEE SHEET 1	-	-	-

# FEED TYPE

## PNEUMATIC

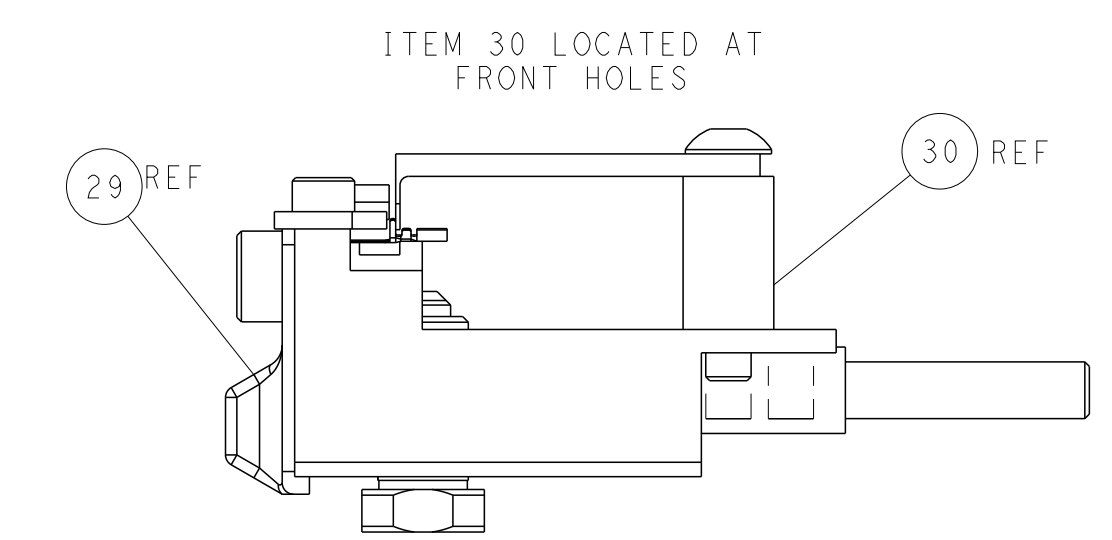
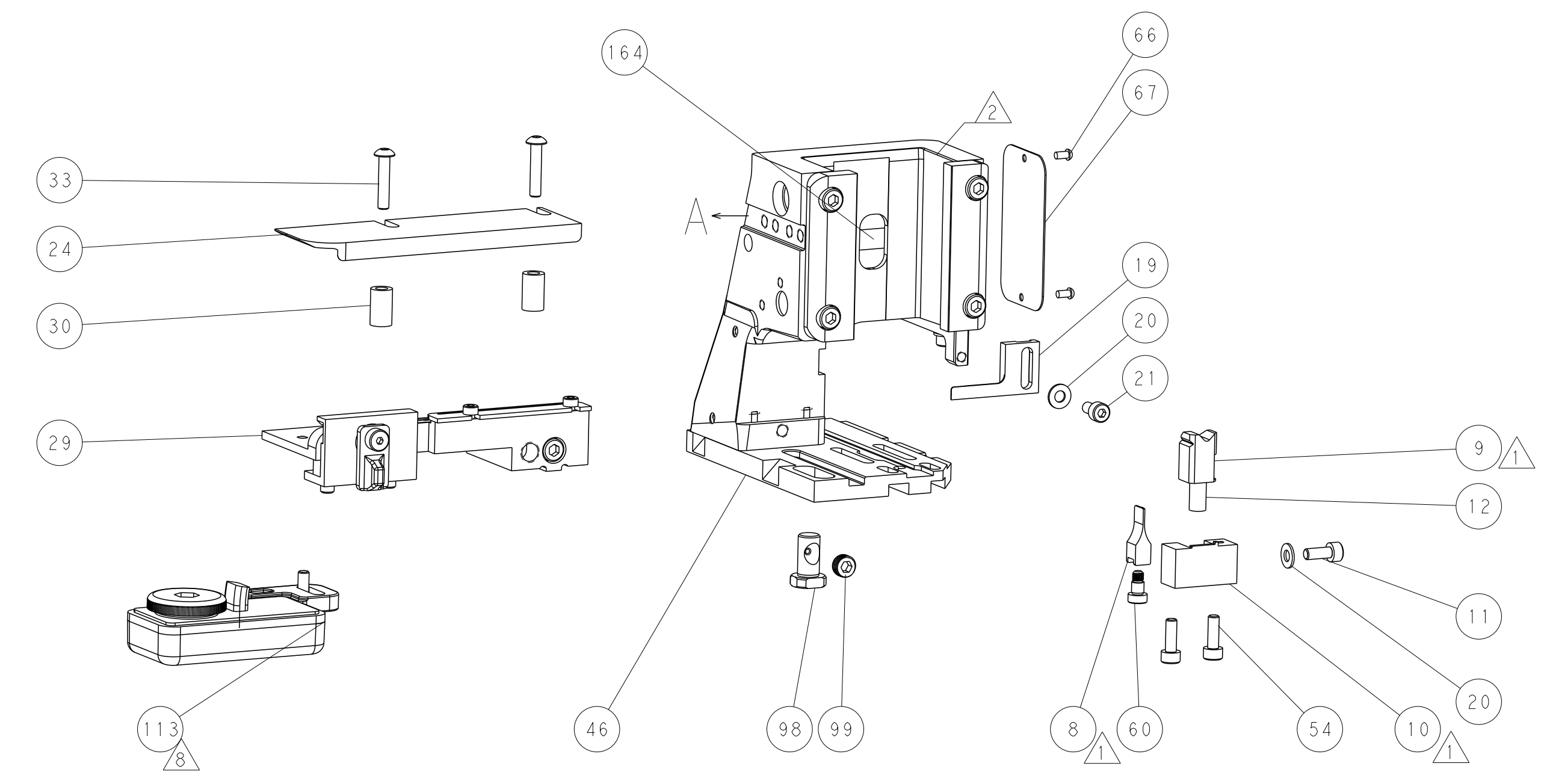
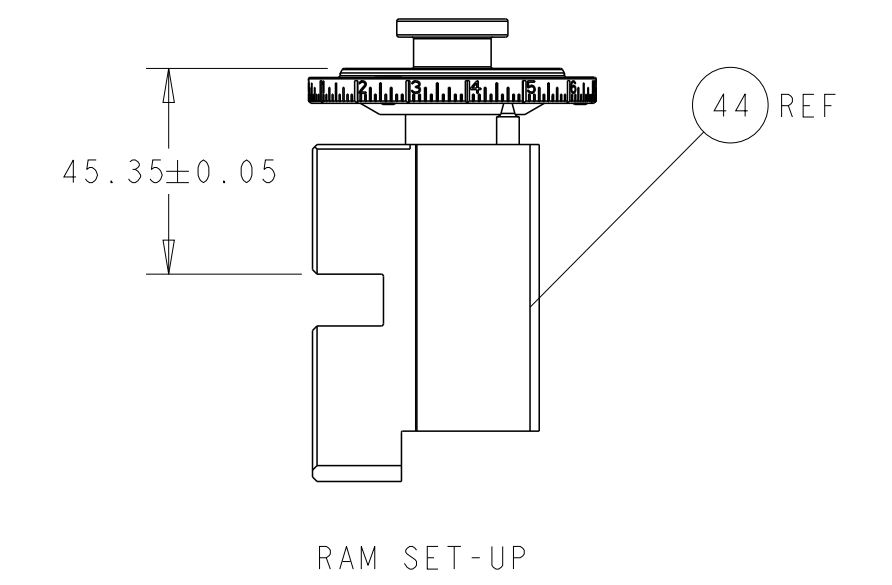
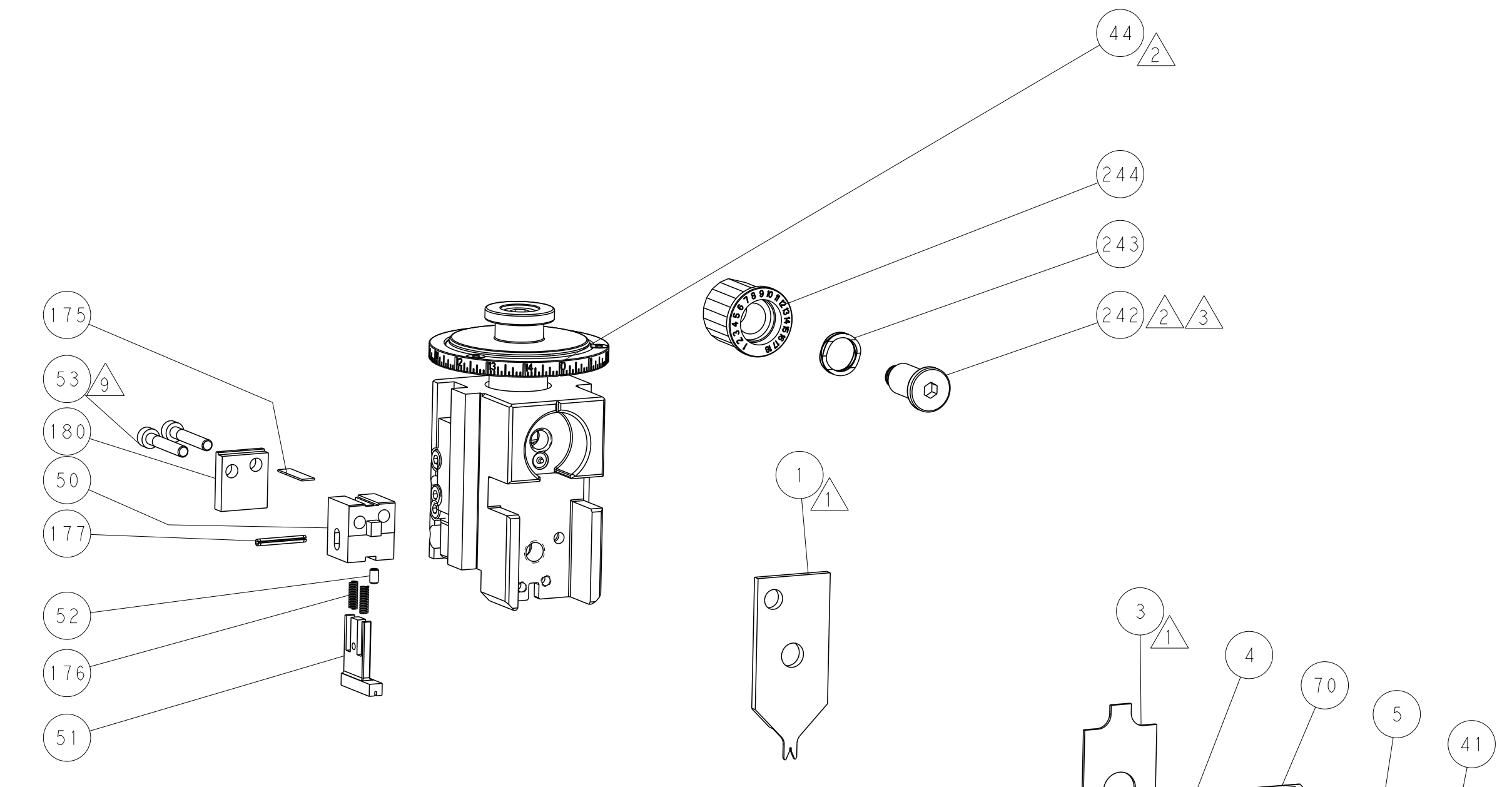
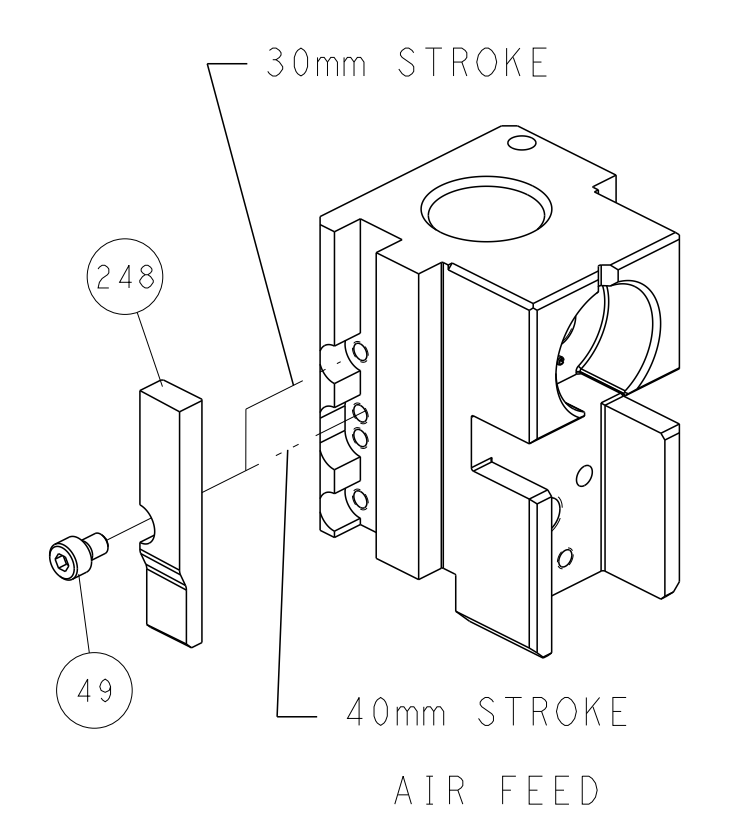


## FEED SPRING SETTING POSITION (SHOWN FROM REAR SIDE)



DETAIL A

## CAM POSITION



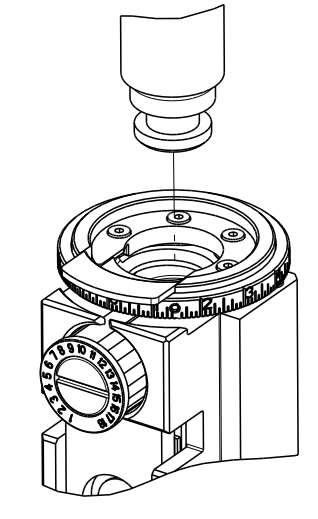
**ATLANTIC VERSION**  
 Shown on sheets 1 of 4 & 2 of 4  
 (Pacific version shown on sheets 3 of 4 & 4 of 4)

DIMENSIONS:		TOLERANCES UNLESS OTHERWISE SPECIFIED:		OWN: J. HOU 26MAY2015	TE Connectivity Harrisburg, PA 17105-3608
mm	0 PLC ±	1 PLC ±	2 PLC ±	CHK: L. ZHANG 26MAY2015	
	3 PLC ±	4 PLC ±	ANGLES ±	APVD: J. GUO 26MAY2015	NAME: Ocean Side Feed Applicator
MATERIAL:	FINISH:	WEIGHT:	SCALE: 1:2	SHEET 2 OF 4	REV H

THIS DRAWING IS UNPUBLISHED. RELEASED FOR PUBLICATION  
 COPYRIGHT 20 BY TYCO ELECTRONICS CORPORATION. ALL RIGHTS RESERVED.

PART NUMBER	REVISION	DESCRIPTION	FEED TYPE
2-2266802-2	H	FINE CRIMP HEIGHT ADJUST	PNEUMATIC
7-2266802-7	H	CRIMP TOOLING KIT	-

PACIFIC VERSION TERMINATOR INTERFACE ADAPTER



APPLICATOR DATA		
CRIMP	SIZE	TYPE
WIRE	0.61 mm [.024]	F
INSUL	0.61 mm [.024]	F
APPLICATOR INSTRUCTIONS 408-35042		

TERMINAL DATA: HIROSE TERMINAL HIROSE CRIMP SPECIFICATION	
TERMINAL NAME: TERMINAL	
WIRE STRIP LENGTH 1.50-1.90 mm [.059-.075 IN]	INSULATION DIAMETER RANGE ∅0.60-0.88 mm [.024-.035 IN]
TERMINAL APPLICATION SPECIFICATION TAD-P-0506 Rev 1	
TERMINALS APPLIED	
TE TERMINAL 2113715-1	HIROSE TERMINAL DF50-2830SCFA

WIRE SIZE	CRIMP HEIGHT mm [INCH]	CRIMP HEIGHT REFERENCE SETTING
28 AWG	0.48 +/- 0.02 [.019 +/- .001]	4.3
30 AWG	0.44 +/- 0.02 [.017 +/- .001]	4.7

- RECOMMENDED SPARE PARTS
- REFER TO SUPPLIED INSTRUCTION SHEET FOR CLEANING, LUBRICATION AND STORAGE OF APPLICATOR.
- APPLY PART NUMBER 2-23419-6 LOCTITE TO THREADS OF ITEM 242.
- CRIMP HEIGHT REFERENCE SETTING WAS THE SETTING USED WHEN THE APPLICATOR WAS QUALIFIED AT THE FACTORY. ADJUSTMENT MAY BE NECESSARY WHEN RUNNING APPLICATOR IN THE FIELD.
- TERMINAL PITCH NOT COMPATIBLE WITH MECHANICAL FEED.
- 6. UNLESS SPECIFIED OTHERWISE TORQUE VALUES SHALL BE USED PER DOCUMENT, 101-35000.
- INSULATION DIAMETER RANGE DOES NOT MEET HIROSE SPECIFICATION.
- TERMINAL LUBRICANT IS RECOMMENDED.
- GRIND TO LENGTH AT ASSEMBLY.

**\*WARNING**  
 ON INSTALLATION, SET WIRE DISC TO CRIMP HEIGHT REFERENCE SETTING FOR LARGEST WIRE SIZE. CRIMP HEIGHT REFERENCE SETTINGS GREATER THAN THE VALUE SHOWN MAY CAUSE DAMAGE TO THE CRIMP TOOLING. REFER TO THE INSTRUCTION SHEET FOR PROPER SETUP AND ADJUSTMENTS.

LOC	DIST	REVISIONS			
		P	LTN	DATE	BY
A	66	-	SEE SHEET 1	-	-

-	1	2119082-5	CAM, SNAIL, INSULATION ADJUSTMENT	244
-	1	2079764-1	WASHER, WAVE SPRING, CREST-TO-CREST	243
	1	2119083-1	RETAINER, INSULATION DIAL	242
-	1	2844940-1	AIR FEED MODULE	238
-	1	455053-2	PLATE, RETAINING	180
-	1	4-21028-0	PIN, SLOTTED SPRING .094 X .750	177
-	2	22278-2	COMPRESSION SPRING	176
-	1	1803129-1	PLATE, RETAINER	175
-	REF	994970-2	COUNTER, MAGNETIC	164
-	1	2119641-2	FEED CAM, AIR FEED	151
-	1	2161425-1	SCREW, SHOULDER	144
-	2	2168083-9	SCR, SKT HD CAP, RoHS, M4 X 20	143
-	1	3-1803583-0	APPLICATOR BASIC ASSEMBLY, SF	141
-	1	1803516-3	RAM ASSEMBLY, SF PACIFIC	140
	1	2119955-1	ASSY, LUBRICATOR, SIDE FEED	113
-	1	2844908-1	SCREW, LOCKING	99
-	1	2844907-1	POST, LOCKING	98
-	1	1803607-3	DOCUMENTATION PACKAGE	71
-	1	1-2119791-4	DEPRESSOR, WIRE	70
-	1	2119740-1	TAG, IDENTIFICATION	67
-	2	2168078-1	SCREW, DRIVE, RH, RoHS, 2 x .188	66
-	1	5-18022-5	SCR, HEX HD CAP, M4 X 6.0	59
-	1	1338685-1	PAWL, FEED	56
	2	1-2168083-2	SCR, SKT HD CAP, RoHS, M4 X 25	53
-	1	18031-1	SCR, SET, CUP POINT M3 X 5.0	52
-	1	1-1803342-0	HOLDER, TERMINAL	51
-	1	1803202-1	CARRIER, HOLD DOWN	50
-	1	18023-9	SCR, SKT HD CAP M4 X 6.0	49
-	1	1803602-1	SCR, BHSC, RoHS (M8 X 25)	41
-	2	2079383-5	SCR, BHSC, RoHS (M4 X 20)	33
-	2	2-2844962-3	SPACER, CYLINDRICAL, STRIP GUIDE	30
-	1	2844992-1	ASSEMBLY, STRIP GUIDE	29
-	1	1320928-2	STRIP GUIDE	24
-	1	2168083-2	SCR, SKT HD CAP, RoHS, M4 X 8.0	21
-	2	1-18028-2	WASHER, FLAT, REG M4	20
-	1	1803338-2	STRIPPER, SIDE FEED	19
-	1	3-22280-3	SPRING, COMPRESSION	12
-	1	1-2168083-0	SCR, SKT HD CAP, RoHS, M4 X 10	11
	1	2119805-1	SHEAR HOLDER, FRONT	10
	1	1803095-7	FLOATING SHEAR, FRONT	9
	1	1-3-1803200-1	ANVIL, COMBINATION	8
-	-	-	-	7
-	-	-	-	6
-	1	1-2119757-8	DEPRESSOR, SHEAR	5
-	1	5-238011-3	BLOCK, CRIMPER SPACER	4
	1	1-1803692-1	CRIMPER, INSULATION F PREMIUM	3
-	-	-	-	2
	1	1-2-1803193-1	CRIMPER, WIRE PREMIUM	1

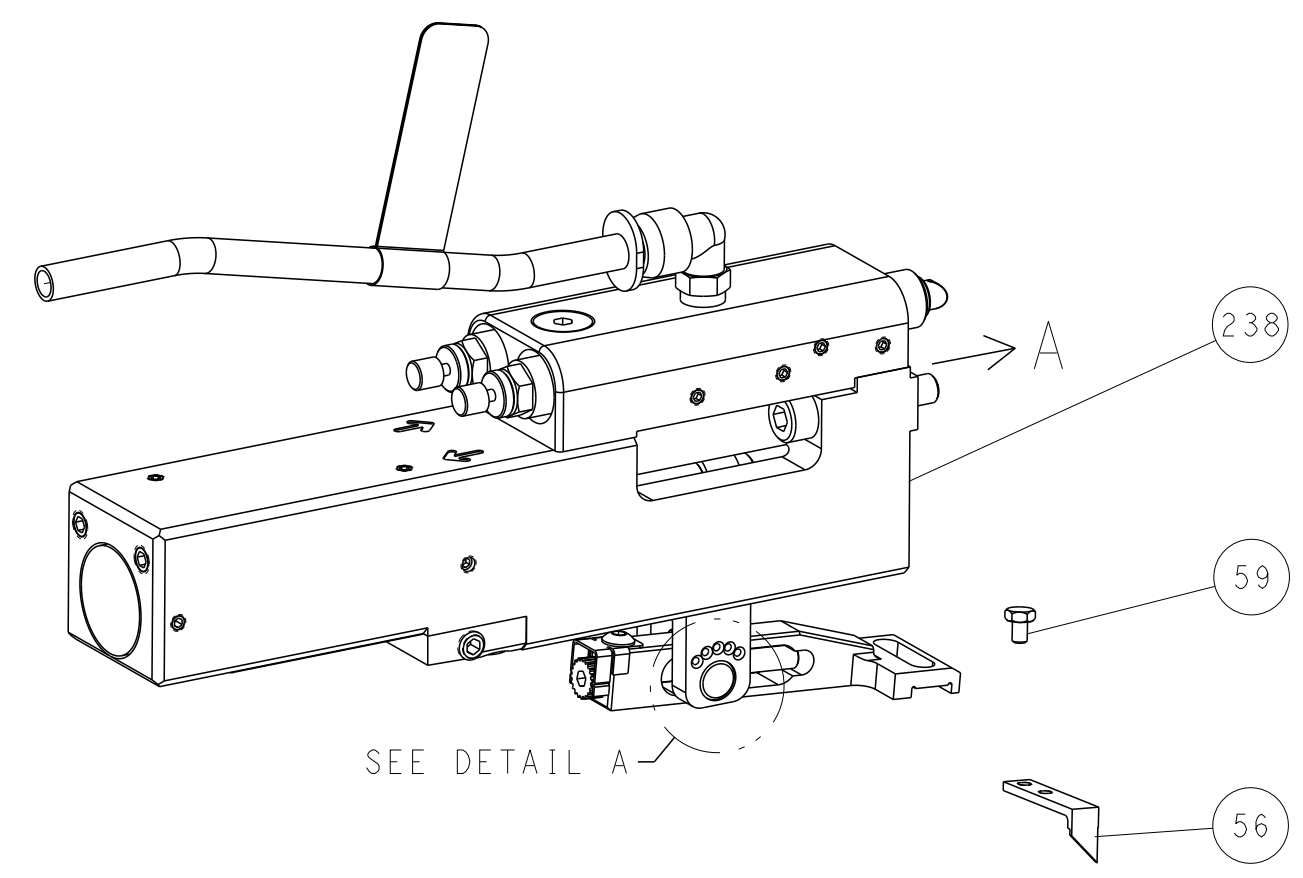
PACIFIC VERSION  
 Shown on sheets 3 of 4 & 4 of 4  
 (Atlantic version shown on sheets 1 of 4 & 2 of 4)

DIMENSIONS: mm		TOLERANCES UNLESS OTHERWISE SPECIFIED:	0 PLC ± .	1 PLC ± .	2 PLC ± .	3 PLC ± .	4 PLC ± .	ANGLES ± .	FINISH	DATE 26MAY2015	CHK L.ZHANG	APVD H.GUO	NAME Ocean Side Feed Applicator	SIZE A1	CAGE CODE 00779	DRAWING NO. 2266802	RESTRICTED TO
Customer Accessible Production Drawing																	

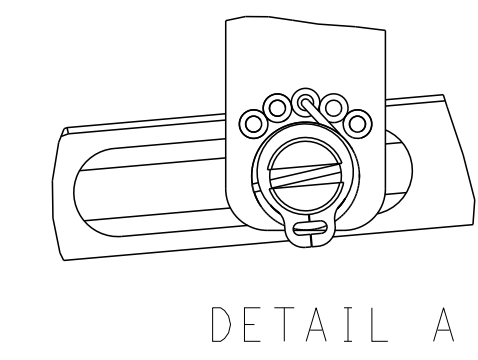
LOC	DIST	REVISIONS					
A	66	P	LTN	DESCRIPTION	DATE	DWN	APVD
		-		SEE SHEET 1	-	-	-

# FEED TYPE

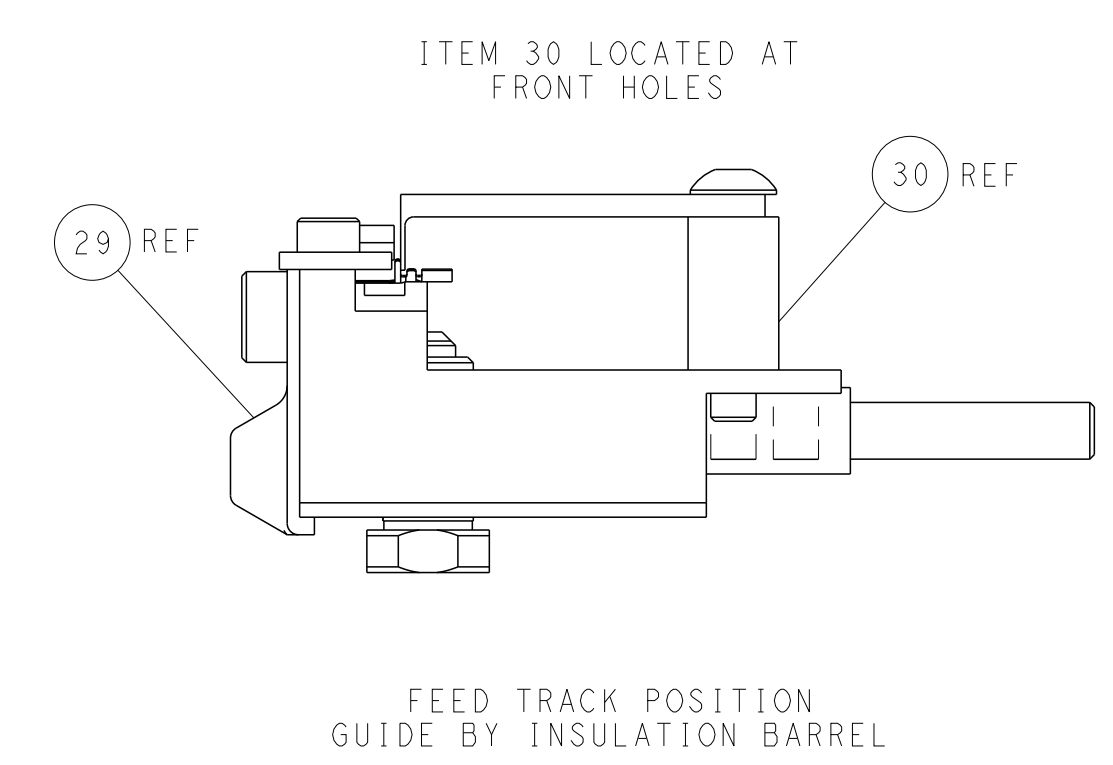
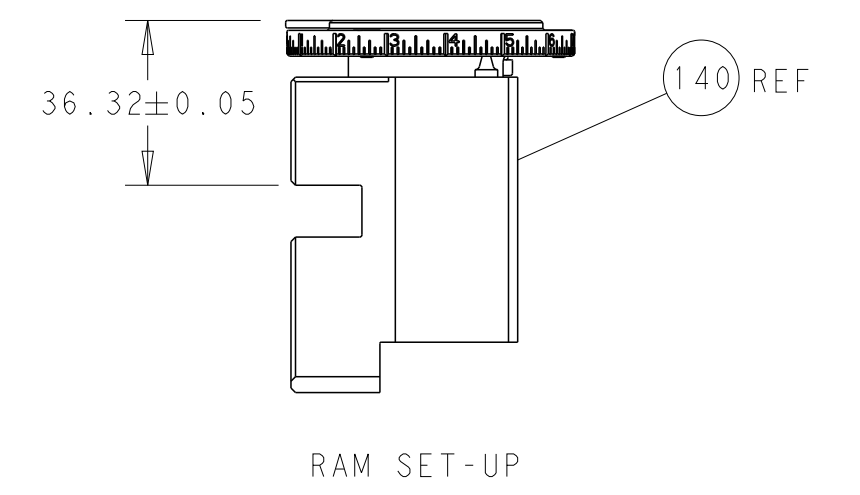
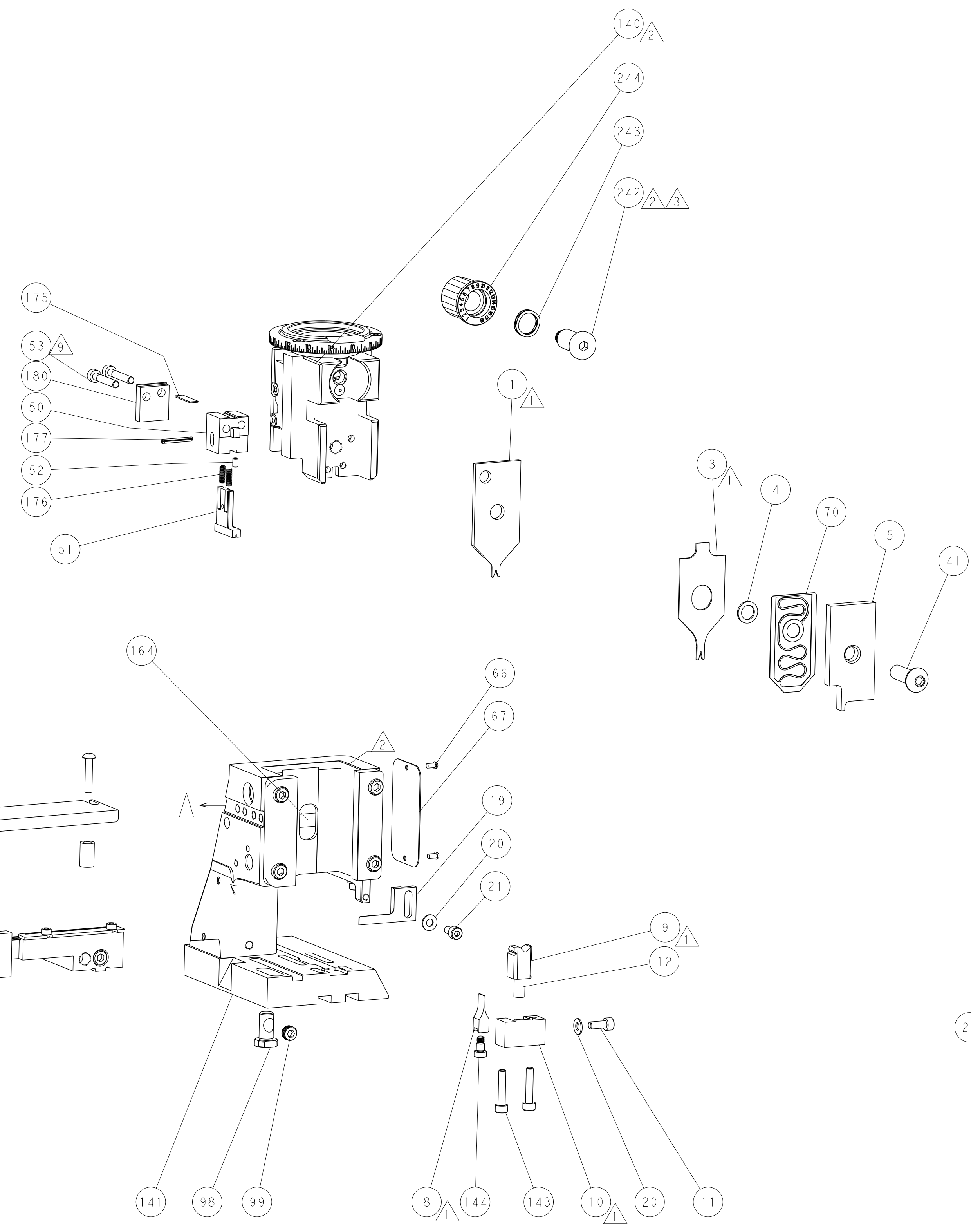
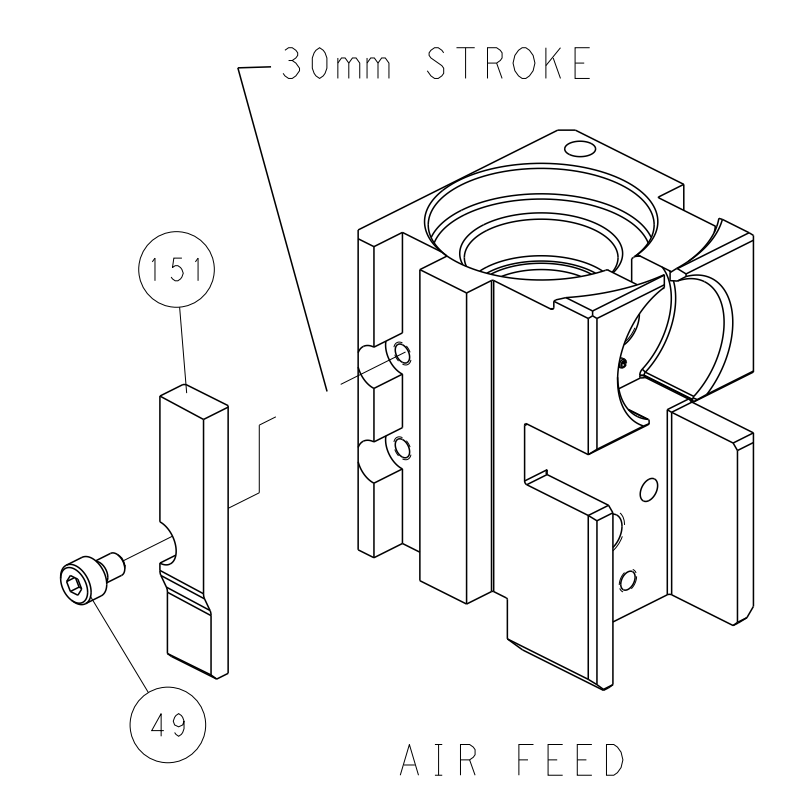
## PNEUMATIC



## FEED SPRING SETTING POSITION (SHOWN FROM REAR SIDE)



## CAM POSITION



**PACIFIC VERSION**  
 Shown on sheets 3 of 4 & 4 of 4  
 (Atlantic version shown on sheets 1 of 4 & 2 of 4)

DIMENSIONS:		TOLERANCES UNLESS OTHERWISE SPECIFIED:		DWN J. HOU 26MAY2015		TE Connectivity Harrisburg, PA 17105-3608	
mm	0 PLC ±	1 PLC ±	2 PLC ±	3 PLC ±	4 PLC ±		
MATERIAL:		FINISH:		WEIGHT:		RESTRICTED TO	
				A   00779 ©=2266802		Customer Accessible Production Drawing	
				SCALE 1:2		SHEET 4 OF 4 REV H	