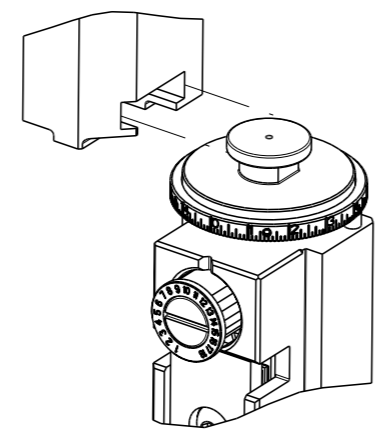


| PART NUMBER | REVISION | DESCRIPTION                      | FEED TYPE  |
|-------------|----------|----------------------------------|------------|
| 2266958-1   | D        | FINE CRIMP HEIGHT ADJUST         | MECHANICAL |
| 2266958-2   | D        | FINE CRIMP HEIGHT ADJUST         | PNEUMATIC  |
| 7-2266958-1 | D        | MECHANICAL AND CRIMP TOOLING KIT | MECHANICAL |
| 7-2266958-2 | D        | PNEUMATIC AND CRIMP TOOLING KIT  | PNEUMATIC  |
| 7-2266958-7 | B        | CRIMP TOOLING KIT                | -          |

ATLANTIC VERSION TERMINATOR INTERFACE ADAPTER



| APPLICATOR DATA |                |      |
|-----------------|----------------|------|
| CRIMP           | SIZE           | TYPE |
| WIRE            | 2.54 mm [.100] | F    |
| INSUL           | 4.06 mm [.160] | F    |

APPLICATOR INSTRUCTIONS  
408-35042

| TERMINAL DATA: HIROSE TERMINAL HIROSE CRIMP SPECIFICATION |                              |
|---|------------------------------|
| TERMINAL NAME: TERMINAL, CRIMP CONTACT                    |                              |
| WIRE STRIP LENGTH   | INSULATION DIAMETER RANGE    |
| 3.50-4.50 mm [.138-.177 IN]                               | Ø3.15-3.60 mm [.124-.142 IN] |
| TERMINAL APPLICATION SPECIFICATION                        | TAD-P-0506 Rev 1             |
| TERMINALS APPLIED   |                              |
| TE TERMINAL   | HIROSE TERMINAL              |
| 2113838-1   | DF22A-1416PCF                |

| TERMINAL DATA: HIROSE TERMINAL HIROSE CRIMP SPECIFICATION |                              |
|---|------------------------------|
| TERMINAL NAME: TERMINAL, CRIMP CONTACT                    |                              |
| WIRE STRIP LENGTH   | INSULATION DIAMETER RANGE    |
| 3.50-4.50 mm [.138-.177 IN]                               | Ø3.00-3.80 mm [.118-.150 IN] |
| TERMINAL APPLICATION SPECIFICATION                        | TAD-P-0506 Rev 1             |
| TERMINALS APPLIED   |                              |
| TE TERMINAL   | HIROSE TERMINAL              |
| 1949133-1   | DF22A-1416SCF                |

| WIRE SIZE | CRIMP HEIGHT mm [INCH]        | CRIMP HEIGHT REFERENCE SETTING |
|-----------|-------------------------------|--------------------------------|
| 14 AWG    | 1.46 +/- 0.04 [.057 +/- .002] | 7.2                            |
| 16 AWG    | 1.34 +/- 0.04 [.053 +/- .002] | 8.4                            |

| WIRE SIZE | CRIMP HEIGHT mm [INCH]        | CRIMP HEIGHT REFERENCE SETTING |
|-----------|-------------------------------|--------------------------------|
| 14 AWG    | 1.40 +/- 0.04 [.055 +/- .002] | 7.8                            |

- 1 RECOMMENDED SPARE PARTS
- 2 REFER TO SUPPLIED INSTRUCTION SHEET FOR CLEANING, LUBRICATION AND STORAGE OF APPLICATOR.
- 3 APPLY PART NUMBER 2-23419-6 LOCTITE TO THREADS OF ITEM 242.
- 4 CRIMP HEIGHT REFERENCE SETTING WAS THE SETTING USED WHEN THE APPLICATOR WAS QUALIFIED AT THE FACTORY. ADJUSTMENT MAY BE NECESSARY WHEN RUNNING APPLICATOR IN THE FIELD.
- 5 TERMINAL LUBRICANT IS RECOMMEND
- 6. UNLESS SPECIFIED OTHERWISE TORQUE VALUES SHALL BE USED PER DOCUMENT, 101-35000.

**\*WARNING**  
ON INSTALLATION, SET WIRE DISC TO CRIMP HEIGHT REFERENCE SETTING FOR LARGEST WIRE SIZE. CRIMP HEIGHT REFERENCE SETTINGS GREATER THAN THE VALUE SHOWN MAY CAUSE DAMAGE TO THE CRIMP TOOLING. REFER TO THE INSTRUCTION SHEET FOR PROPER SETUP AND ADJUSTMENTS.

ATLANTIC VERSION  
Shown on sheets 1 of 4 & 2 of 4  
(Pacific version shown on sheets 3 of 4 & 4 of 4)

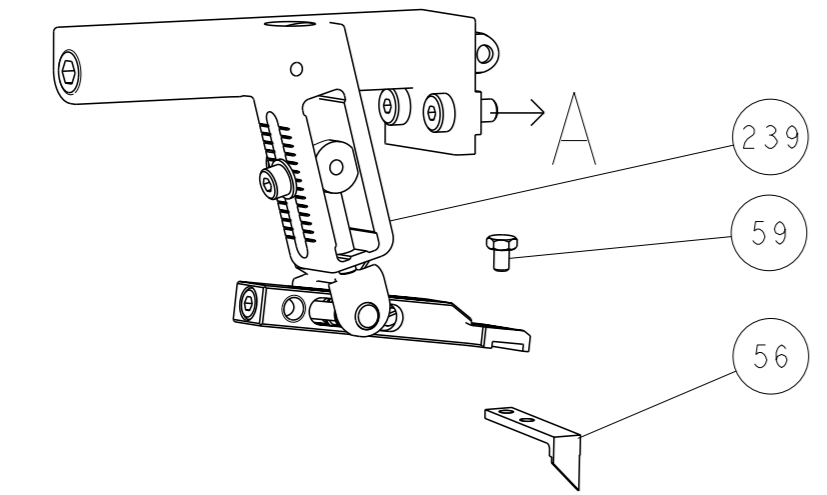
| LOC | DIST | REVISIONS |               |           |      |
|-----|------|-----------|---------------|-----------|------|
|     |      | REV       | DATE          | BY        | CHKD |
| A   | 66   | A         | RELEASED      | 01OCT2015 | CT   |
|     |      | B         | ECR-15-017076 | 23NOV2015 | TT   |
|     |      | C         | ECR-17-007325 | 19MAY2017 | MEH  |
|     |      | D         | ECR-19-006386 | 22APR2019 | FJ   |

|   |     |     |     |     |             |                                     |     |
|---|-----|-----|-----|-----|-------------|-------------------------------------|-----|
| - | 1   | -   | 1   | -   | 2119640-1   | PUSH ROD, AIR FEED                  | 250 |
| - | 1   | -   | 1   | -   | 1803259-1   | BUSHING, FLANGED                    | 249 |
| - | 1   | -   | 1   | -   | 2119641-1   | FEED CAM, AIR FEED                  | 248 |
| - | 1   | 1   | 1   | 1   | 2119082-3   | CAM, SNAIL, INSULATION ADJUSTMENT   | 244 |
| - | 1   | 1   | 1   | 1   | 2079764-1   | WASHER, WAVE SPRING, CREST-TO-CREST | 243 |
| - | 1   | 1   | 1   | 1   | 2119083-1   | RETAINER, INSULATION DIAL           | 242 |
| - | 1   | 1   | 1   | 1   | 7-18023-7   | SCR, SKT HD CAP M3 X 4.0            | 241 |
| - | -   | 1   | -   | 1   | 2119580-1   | MECHANICAL FEED ASSEMBLY            | 239 |
| - | 1   | -   | 1   | -   | 2063440-1   | AIR FEED MODULE                     | 238 |
| - | 2   | -   | 2   | -   | 21045-3     | RING, RETAIN, EXTERN, 3/16 CRESCENT | 172 |
| - | REF | REF | REF | REF | 994970-2    | COUNTER, MAGNETIC                   | 164 |
| - | 1   | -   | 1   | -   | 240638-1    | SPRING, FEED FINGER                 | 163 |
| - | 1   | -   | 1   | -   | 3-23627-7   | PIN, RETAIN, GRVD, 3/16 X .854      | 137 |
| - | 1   | -   | 1   | -   | 2119799-1   | HOLDER, FEED FINGER, AF             | 136 |
| - | 1   | 1   | 1   | 1   | 2119955-1   | ASSY, LUBRICATOR, SIDE FEED         | 113 |
| - | 1   | 1   | 1   | 1   | 2844908-1   | SCREW, LOCKING                      | 99  |
| - | 1   | 1   | 1   | 1   | 2844907-1   | POST, LOCKING                       | 98  |
| - | 1   | 1   | 1   | 1   | 455888-5    | SPACER, CRIMPER                     | 82  |
| - | 1   | 1   | 1   | 1   | 1803607-1   | DOCUMENTATION PACKAGE               | 71  |
| - | 1   | 1   | 1   | 1   | 2119740-1   | TAG, IDENTIFICATION                 | 67  |
| - | 2   | 2   | 2   | 2   | 2168078-1   | SCREW, DRIVE, RH, RoHS, 2 x .188    | 66  |
| - | 1   | 1   | 1   | 1   | 2168083-2   | SCR, SKT HD CAP, RoHS, M4 X 8.0     | 60  |
| - | 1   | 1   | 1   | 1   | 5-18022-5   | SCR, HEX HD CAP, M4 X 6.0           | 59  |
| - | 1   | 1   | 1   | 1   | 1338685-1   | PAWL, FEED                          | 56  |
| - | 4   | 4   | 4   | 4   | 2168083-3   | SCR, SKT HD CAP, RoHS, M4 X 12.0    | 54  |
| - | 2   | 2   | 2   | 2   | 2168083-3   | SCR, SKT HD CAP, RoHS, M4 X 12.0    | 53  |
| - | 1   | 1   | 1   | 1   | 5018030-1   | NUT, HEX, REG, RoHS, M3             | 52  |
| - | 1   | 1   | 1   | 1   | 811242-5    | BUMPER, HOLD DOWN                   | 51  |
| - | 1   | 1   | 1   | 1   | 690753-2    | SPACER, TONKER                      | 50  |
| - | 1   | 2   | 1   | 2   | 18023-9     | SCR, SKT HD CAP M4 X 6.0            | 49  |
| - | -   | 1   | -   | 1   | 2119652-1   | FEED CAM, PRE FEED                  | 48  |
| - | -   | 1   | -   | 1   | 2119653-1   | FEED CAM, POST FEED                 | 47  |
| - | 1   | 1   | 1   | 1   | 1803583-9   | APPLICATOR BASIC ASSEMBLY, SF       | 46  |
| - | 1   | 1   | 1   | 1   | 1803515-1   | RAM ASSEMBLY, SF ATLANTIC           | 44  |
| - | 1   | 1   | 1   | 1   | 1803602-1   | SCR, BHSC, RoHS (M8 X 25)           | 41  |
| - | 1   | 1   | 1   | 1   | 3-1752356-3 | SUPPORT, TERMINAL                   | 34  |
| - | 2   | 2   | 2   | 2   | 2079383-5   | SCR, BHSC, RoHS (M4 X 20)           | 33  |
| - | 2   | 2   | 2   | 2   | 3-2844962-0 | SPACER, CYLINDRICAL, STRIP GUIDE    | 30  |
| - | 1   | 1   | 1   | 1   | 2844992-1   | ASSEMBLY, STRIP GUIDE               | 29  |
| - | 1   | 1   | 1   | 1   | 2119791-7   | DEPRESSOR, WIRE                     | 28  |
| - | 1   | 1   | 1   | 1   | 2119943-1   | WASHER, SPACER                      | 27  |
| - | 1   | 1   | 1   | 1   | 1320928-2   | STRIP GUIDE                         | 24  |
| - | 1   | 1   | 1   | 1   | 2168083-2   | SCR, SKT HD CAP, RoHS, M4 X 8.0     | 21  |
| - | 2   | 2   | 2   | 2   | 1-18028-2   | WASHER, FLAT, REG M4                | 20  |
| - | 1   | 1   | 1   | 1   | 2119533-1   | STRIPPER, SIDE FEED                 | 19  |
| - | 1   | 1   | 1   | 1   | 2119806-1   | INSERT, SHEAR                       | 13  |
| - | 1   | 1   | 1   | 1   | 3-22280-3   | SPRING, COMPRESSION                 | 12  |
| - | 1   | 1   | 1   | 1   | 1-356885-4  | STOP, SHEAR                         | 11  |
| - | 1   | 1   | 1   | 1   | 2119805-1   | SHEAR HOLDER, FRONT                 | 10  |
| - | 1   | 1   | 1   | 1   | 1803095-3   | FLOATING SHEAR, FRONT               | 9   |
| 1 | 2   | 2   | 1   | 1   | 1803334-4   | ANVIL, COMBINATION                  | 8   |
| - | 1   | 1   | 1   | 1   | 240641-9    | SPACER                              | 7   |
| - | -   | -   | -   | -   | -           | -                                   | 6   |
| - | 1   | 1   | 1   | 1   | 1-2119757-0 | DEPRESSOR, SHEAR                    | 5   |
| - | 1   | 1   | 1   | 1   | 238011-8    | BLOCK, CRIMPER SPACER               | 4   |
| 1 | 2   | 2   | 1   | 1   | 1803327-5   | CRIMPER, INSULATION F PREMIUM       | 3   |
| - | 1   | 1   | 1   | 1   | 455888-7    | SPACER, CRIMPER                     | 2   |
| 1 | 2   | 2   | 1   | 1   | 1803325-8   | CRIMPER, WIRE                       | 1   |

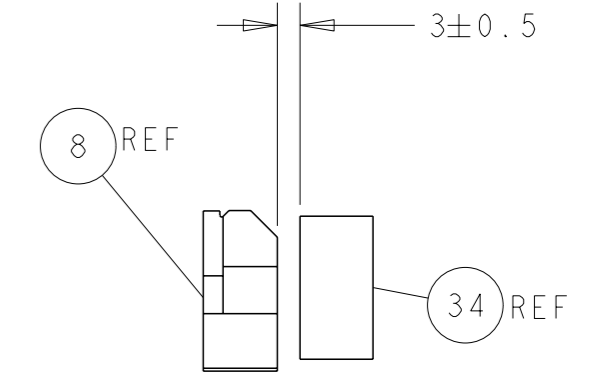
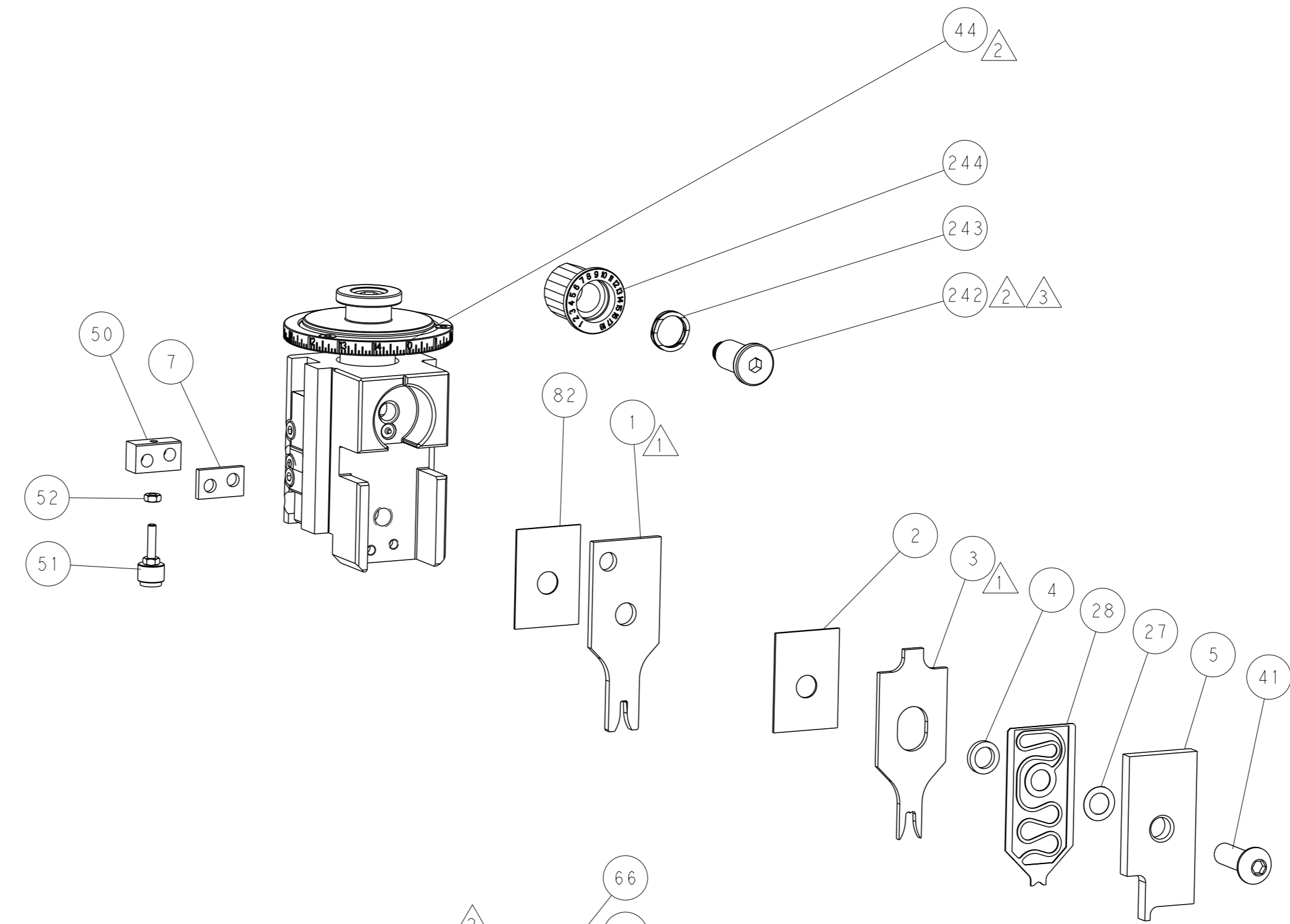
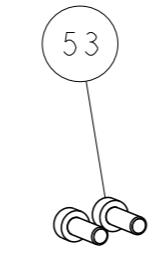
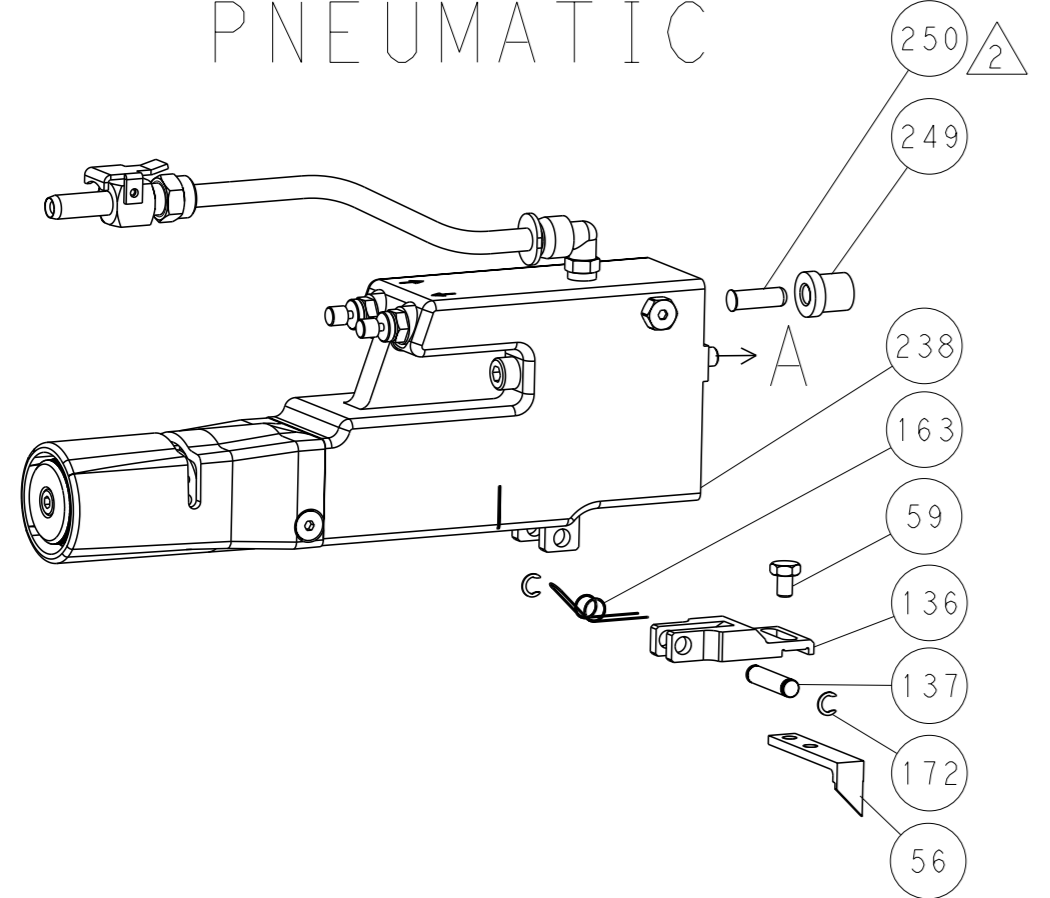
| DIMENSIONS:                            |         | TOLERANCES UNLESS OTHERWISE SPECIFIED: |         | APPROVED:    |         | NAME:    |        |
|--|---------|--|---------|--------------|---------|----------|--------|
| mm                                     | 0 PLC ± | 1 PLC ±                                | 2 PLC ± | 3 PLC ±      | 4 PLC ± | ANGLES ± | FINISH |
| MATERIAL                               |         | WEIGHT                                 |         | SCALE        |         | SHEET    |        |
| Customer Accessible Production Drawing |         | SCALE 1:2                              |         | SHEET 1 OF 4 |         | REV D    |        |

| LOC | DIST | REVISIONS   |      |     |      |
|-----|------|-------------|------|-----|------|
| A   | 66   | REV         | DATE | OWN | APVD |
| -   | -    | SEE SHEET 1 | -    | -   | -    |

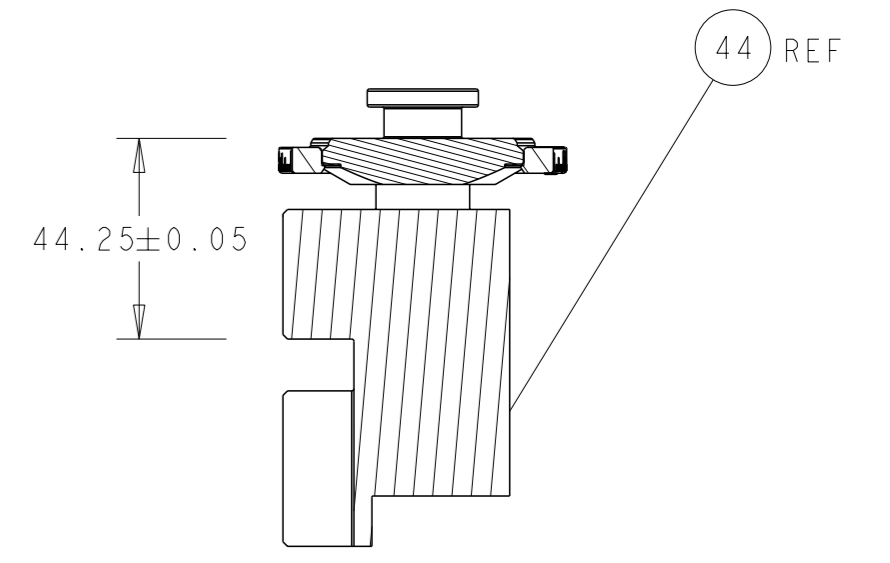
# FEED TYPE MECHANICAL



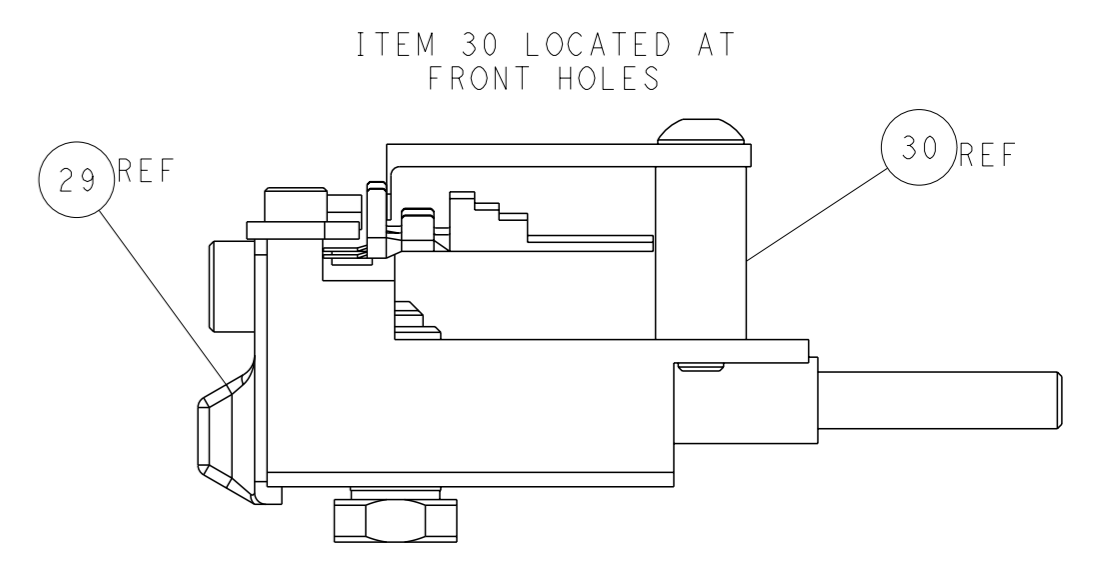
# PNEUMATIC



TERMINAL SUPPORT LOCATION

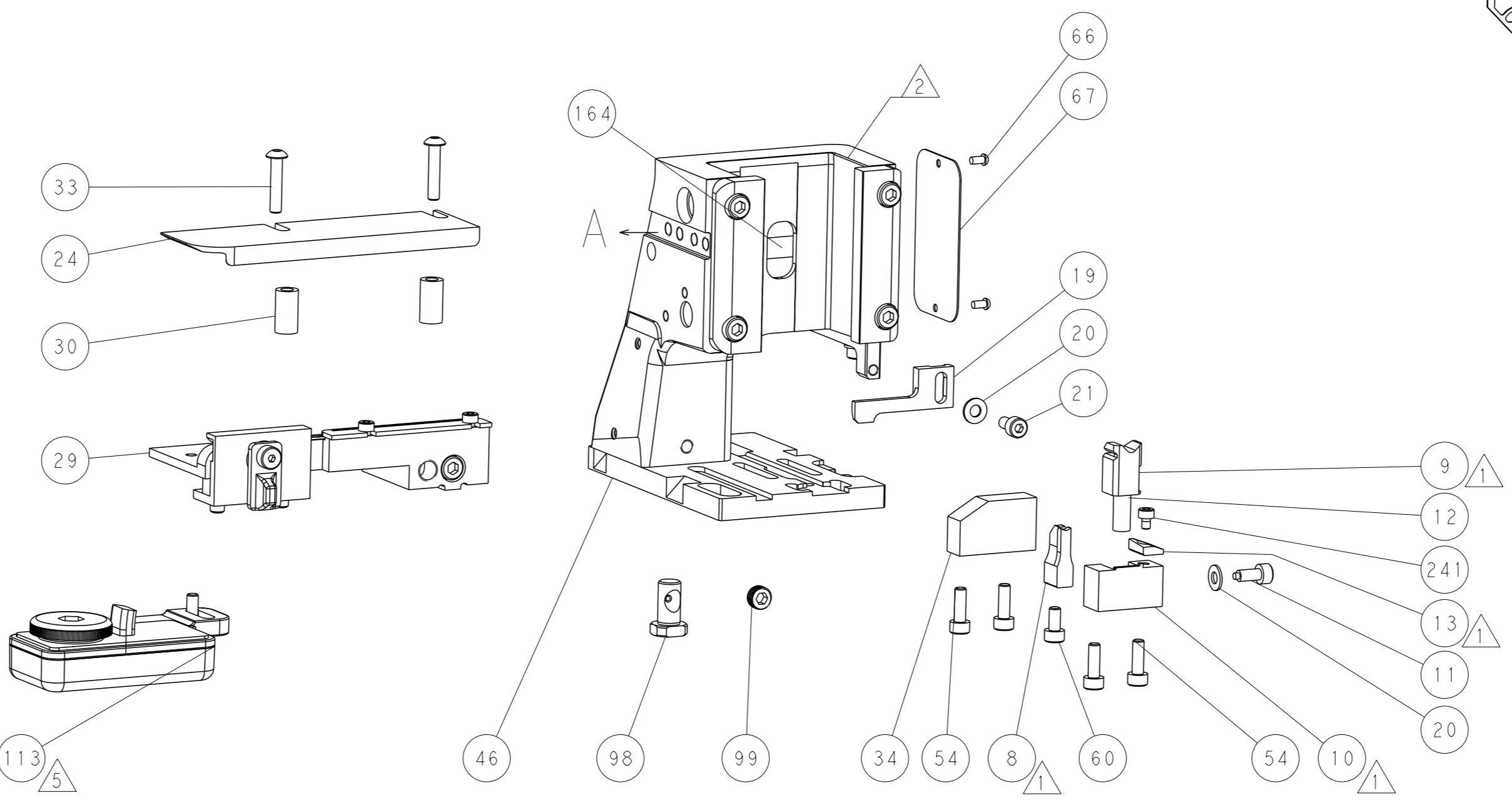
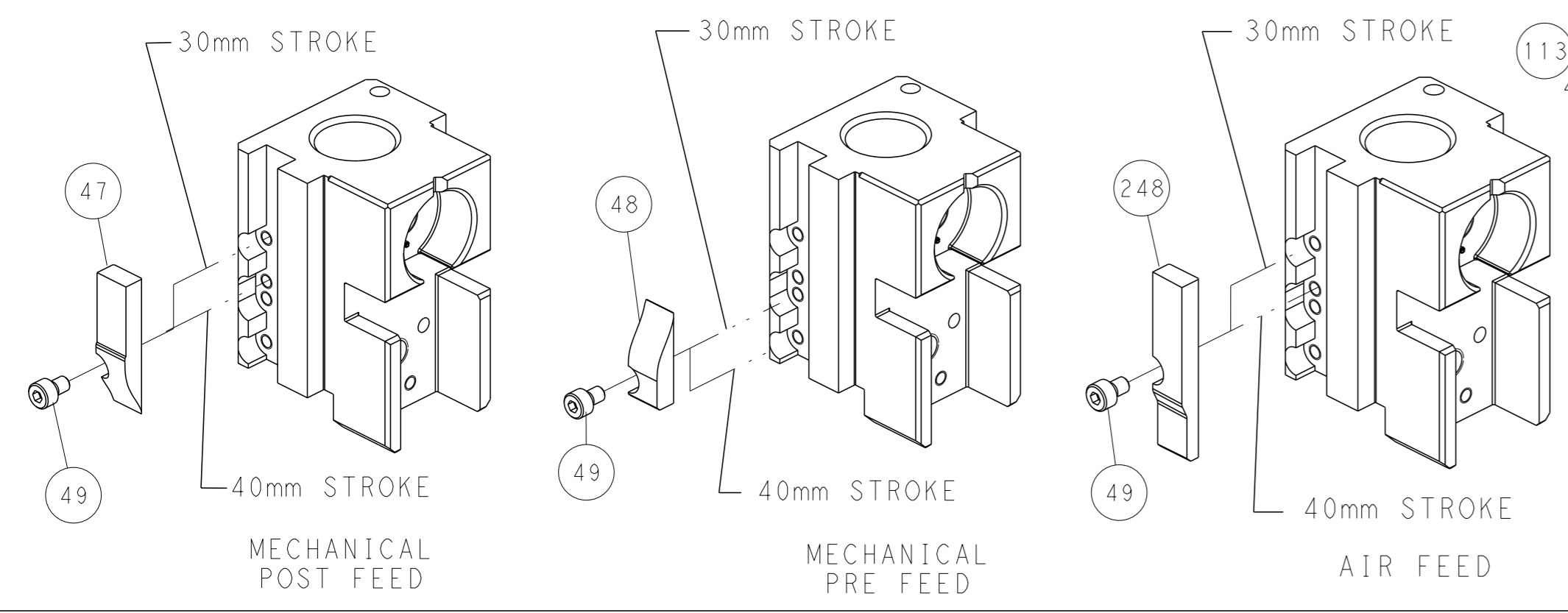


RAM SET-UP



FEED TRACK POSITION GUIDE BY INSULATION BARREL

# CAM POSITIONS

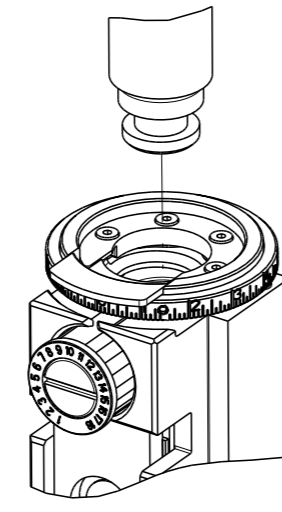


**ATLANTIC VERSION**  
 Shown on sheets 1 of 4 & 2 of 4  
 (Pacific version shown on sheets 3 of 4 & 4 of 4)

|   |  |   |   |  |
|---|--|---|---|--|
| <small>THIS DRAWING IS A CONTROLLED DOCUMENT FOR TYCO ELECTRONICS CORPORATION. IT IS SUBJECT TO CHANGE AND THE CONTROL AND REVISIONS DISPOSITION SHOULD BE CONTACTED FOR THE LATEST REVISION.</small> |  | OWN: X. ZHAO 24AUG2015<br>CHK: L. ZHANG 24AUG2015<br>APVD: J. GUO 24AUG2015 | NAME: Ocean Side Feed Applicator<br>SIZE: A1<br>CAGE CODE: 00779<br>DRAWING NO: C=2266958 | TE Connectivity<br>Harrisburg, PA 17105-3608 |
| DIMENSIONS: mm<br>TOLERANCES UNLESS OTHERWISE SPECIFIED:<br>0 PLC ±<br>1 PLC ±<br>2 PLC ±<br>3 PLC ±<br>4 PLC ±<br>ANGLES FINISH ±  | WEIGHT: -<br>SCALE: 1:2<br>SHEET: 2 of 4<br>REV: D | RESTRICTED TO: -  | Customer Accessible Production Drawing  |  |

| 8  | 7        | 6                        | 5          | 4 | 3 | 2 | 1 |
|--|----------|--------------------------|------------|---|---|---|---|
| THIS DRAWING IS UNPUBLISHED.                                       |          | RELEASED FOR PUBLICATION |            |   |   |   |   |
| COPYRIGHT 20 BY TYCO ELECTRONICS CORPORATION. ALL RIGHTS RESERVED. |          |                          |            |   |   |   |   |
| PART NUMBER  | REVISION | DESCRIPTION              | FEED TYPE  |   |   |   |   |
| 2-2266958-1  | D        | FINE CRIMP HEIGHT ADJUST | MECHANICAL |   |   |   |   |
| 2-2266958-2  | D        | FINE CRIMP HEIGHT ADJUST | PNEUMATIC  |   |   |   |   |
| 7-2266958-7  | B        | CRIMP TOOLING KIT        | -          |   |   |   |   |

PACIFIC VERSION TERMINATOR INTERFACE ADAPTER



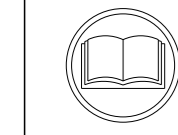
| APPLICATOR DATA                   |                |      |
|-----------------------------------|----------------|------|
| CRIMP                             | SIZE           | TYPE |
| WIRE                              | 2.54 mm [.100] | F    |
| INSUL                             | 4.06 mm [.160] | F    |
| APPLICATOR INSTRUCTIONS 408-35042 |                |      |

|   |                  |                              |                 |
|---|------------------|------------------------------|-----------------|
| TERMINAL DATA: HIROSE TERMINAL HIROSE CRIMP SPECIFICATION |                  |                              |                 |
| TERMINAL NAME: TERMINAL, CRIMP CONTACT                    |                  |                              |                 |
| WIRE STRIP LENGTH   |                  | INSULATION DIAMETER RANGE    |                 |
| 3.50-4.50 mm [.138-.177 IN]                               |                  | Ø3.15-3.60 mm [.124-.142 IN] |                 |
| TERMINAL APPLICATION SPECIFICATION                        | TAD-P-0506 Rev 1 | -                            | -               |
| TERMINALS APPLIED <sup>5</sup>                            |                  |                              |                 |
| TE TERMINAL   | HIROSE TERMINAL  | TE TERMINAL                  | HIROSE TERMINAL |
| 2113838-1   | DF22A-1416PCF    |                              |                 |

|   |                  |                              |                 |
|---|------------------|------------------------------|-----------------|
| TERMINAL DATA: HIROSE TERMINAL HIROSE CRIMP SPECIFICATION |                  |                              |                 |
| TERMINAL NAME: TERMINAL, CRIMP CONTACT                    |                  |                              |                 |
| WIRE STRIP LENGTH   |                  | INSULATION DIAMETER RANGE    |                 |
| 3.50-4.50 mm [.138-.177 IN]                               |                  | Ø3.00-3.80 mm [.118-.150 IN] |                 |
| TERMINAL APPLICATION SPECIFICATION                        | TAD-P-0506 Rev 1 | -                            | -               |
| TERMINALS APPLIED <sup>5</sup>                            |                  |                              |                 |
| TE TERMINAL   | HIROSE TERMINAL  | TE TERMINAL                  | HIROSE TERMINAL |
| 1949133-1   | DF22A-1416SCF    | 1949133-2                    | DF22A-1416SCFA  |

| WIRE SIZE | CRIMP HEIGHT mm [INCH]     | CRIMP HEIGHT REFERENCE SETTING |
|-----------|----------------------------|--------------------------------|
| 14 AWG    | 1.46+/-0.04 [.057+/-0.002] | 7.2                            |
| 16 AWG    | 1.34+/-0.04 [.053+/-0.002] | 8.4                            |

| WIRE SIZE | CRIMP HEIGHT mm [INCH]     | CRIMP HEIGHT REFERENCE SETTING |
|-----------|----------------------------|--------------------------------|
| 14 AWG    | 1.40+/-0.04 [.055+/-0.002] | 7.8                            |



- <sup>1</sup> RECOMMENDED SPARE PARTS
  - <sup>2</sup> REFER TO SUPPLIED INSTRUCTION SHEET FOR CLEANING, LUBRICATION AND STORAGE OF APPLICATOR.
  - <sup>3</sup> APPLY PART NUMBER 2-23419-6 LOCTITE TO THREADS OF ITEM 242.
  - <sup>4</sup> CRIMP HEIGHT REFERENCE SETTING WAS THE SETTING USED WHEN THE APPLICATOR WAS QUALIFIED AT THE FACTORY. ADJUSTMENT MAY BE NECESSARY WHEN RUNNING APPLICATOR IN THE FIELD.
  - <sup>5</sup> TERMINAL LUBRICANT IS RECOMMENDED
6. UNLESS SPECIFIED OTHERWISE TORQUE VALUES SHALL BE USED PER DOCUMENT, 101-35000.

**\*WARNING**  
ON INSTALLATION, SET WIRE DISC TO CRIMP HEIGHT REFERENCE SETTING FOR LARGEST WIRE SIZE. CRIMP HEIGHT REFERENCE SETTINGS GREATER THAN THE VALUE SHOWN MAY CAUSE DAMAGE TO THE CRIMP TOOLING, REFER TO THE INSTRUCTION SHEET FOR PROPER SETUP AND ADJUSTMENTS.

PACIFIC VERSION  
Shown on sheets 3 of 4 & 4 of 4  
(Atlantic version shown on sheets 1 of 4 & 2 of 4)

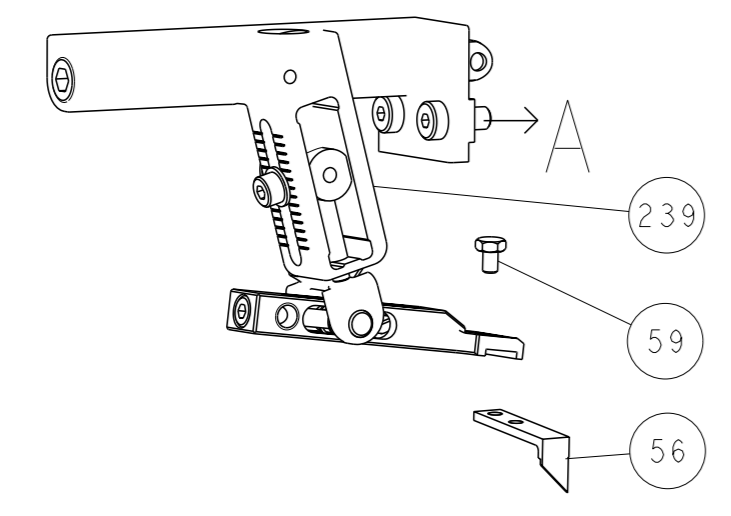
| LOC | DIST | REVISIONS |             |    |      |
|-----|------|-----------|-------------|----|------|
| A   | 66   | REV       | DATE        | BY | APPV |
|     |      | -         | SEE SHEET 1 | -  | -    |

|   |     |     |             |                                     |     |
|---|-----|-----|-------------|-------------------------------------|-----|
| - | 1   | -   | 2119640-1   | PUSH ROD, AIR FEED                  | 250 |
| - | 1   | -   | 1803259-1   | BUSHING, FLANGED                    | 249 |
| - | 1   | 1   | 2119082-3   | CAM, SNAIL, INSULATION ADJUSTMENT   | 244 |
| - | 1   | 1   | 2079764-1   | WASHER, WAVE SPRING, CREST-TO-CREST | 243 |
| - | 1   | 1   | 2119083-1   | RETAINER, INSULATION DIAL           | 242 |
| - | 1   | 1   | 7-18023-7   | SCR, SKT HD CAP M3 X 4.0            | 241 |
| - | -   | 1   | 2119580-1   | MECHANICAL FEED ASSEMBLY            | 239 |
| - | 1   | -   | 2063440-1   | AIR FEED MODULE                     | 238 |
| - | 2   | -   | 21045-3     | RING, RETAIN, EXTERN, 3/16 CRESCENT | 172 |
| - | REF | REF | 994970-2    | COUNTER, MAGNETIC                   | 164 |
| - | 1   | -   | 240638-1    | SPRING, FEED FINGER                 | 163 |
| - | 1   | -   | 2119641-2   | FEED CAM, AIR FEED                  | 151 |
| - | 1   | 1   | 2168083-8   | SCR, SKT HD CAP, RoHS, M4 X 16      | 144 |
| - | 4   | 4   | 2168083-9   | SCR, SKT HD CAP, RoHS, M4 X 20      | 143 |
| - | -   | 1   | 2119653-2   | FEED CAM, POST FEED                 | 142 |
| - | 1   | 1   | 1-1803583-0 | APPLICATOR BASIC ASSEMBLY, SF       | 141 |
| - | 1   | 1   | 1803516-1   | RAM ASSEMBLY, SF PACIFIC            | 140 |
| - | 1   | -   | 3-23627-7   | PIN, RETAIN, GRVD, 3/16 X .854      | 137 |
| - | 1   | -   | 2119799-1   | HOLDER, FEED FINGER, AF             | 136 |
| - | 1   | 1   | 2119955-1   | ASSY, LUBRICATOR, SIDE FEED         | 113 |
| - | 1   | 1   | 2844908-1   | SCREW, LOCKING                      | 99  |
| - | 1   | 1   | 2844907-1   | POST, LOCKING                       | 98  |
| - | 1   | 1   | 455888-5    | SPACER, CRIMPER                     | 82  |
| - | 1   | 1   | 1803607-1   | DOCUMENTATION PACKAGE               | 71  |
| - | 1   | 1   | 2119740-1   | TAG, IDENTIFICATION                 | 67  |
| - | 2   | 2   | 2168078-1   | SCREW, DRIVE, RH, RoHS, 2 x .188    | 66  |
| - | 1   | 1   | 5-18022-5   | SCR, HEX HD CAP, M4 X 6.0           | 59  |
| - | 1   | 1   | 1338685-1   | PAWL, FEED                          | 56  |
| - | 2   | 2   | 2168083-3   | SCR, SKT HD CAP, RoHS, M4 X 12.0    | 53  |
| - | 1   | 1   | 5018030-1   | NUT, HEX, REG, RoHS, M3             | 52  |
| - | 1   | 1   | 811242-5    | BUMPER, HOLD DOWN                   | 51  |
| - | 1   | 1   | 690753-2    | SPACER, TONKER                      | 50  |
| - | 1   | 2   | 18023-9     | SCR, SKT HD CAP M4 X 6.0            | 49  |
| - | -   | 1   | 2119652-1   | FEED CAM, PRE FEED                  | 48  |
| - | 1   | 1   | 1803602-1   | SCR, BHSC, RoHS (M8 X 25)           | 41  |
| - | 1   | 1   | 3-1752356-3 | SUPPORT, TERMINAL                   | 34  |
| - | 2   | 2   | 2079383-5   | SCR, BHSC, RoHS (M4 X 20)           | 33  |
| - | 2   | 2   | 3-2844962-0 | SPACER, CYLINDRICAL, STRIP GUIDE    | 30  |
| - | 1   | 1   | 2844992-1   | ASSEMBLY, STRIP GUIDE               | 29  |
| - | 1   | 1   | 2119791-7   | DEPRESSOR, WIRE                     | 28  |
| - | 1   | 1   | 2119943-1   | WASHER, SPACER                      | 27  |
| - | 1   | 1   | 1320928-2   | STRIP GUIDE                         | 24  |
| - | 1   | 1   | 2168083-2   | SCR, SKT HD CAP, RoHS, M4 X 8.0     | 21  |
| - | 2   | 2   | 1-18028-2   | WASHER, FLAT, REG M4                | 20  |
| - | 1   | 1   | 2119533-1   | STRIPPER, SIDE FEED                 | 19  |
| - | 1   | 1   | 2119806-1   | INSERT, SHEAR                       | 13  |
| - | 1   | 1   | 3-22280-3   | SPRING, COMPRESSION                 | 12  |
| - | 1   | 1   | 1-356885-4  | STOP, SHEAR                         | 11  |
| - | 1   | 1   | 2119805-1   | SHEAR HOLDER, FRONT                 | 10  |
| - | 1   | 1   | 1803095-3   | FLOATING SHEAR, FRONT               | 9   |
| - | 1   | 1   | 1803334-4   | ANVIL, COMBINATION                  | 8   |
| - | 1   | 1   | 240641-9    | SPACER                              | 7   |
| - | -   | -   | -           | -                                   | 6   |
| - | 1   | 1   | 1-2119757-0 | DEPRESSOR, SHEAR                    | 5   |
| - | 1   | 1   | 238011-8    | BLOCK, CRIMPER SPACER               | 4   |
| - | 1   | 1   | 1803327-5   | CRIMPER, INSULATION F PREMIUM       | 3   |
| - | 1   | 1   | 455888-7    | SPACER, CRIMPER                     | 2   |
| - | 1   | 1   | 1803325-8   | CRIMPER, WIRE                       | 1   |

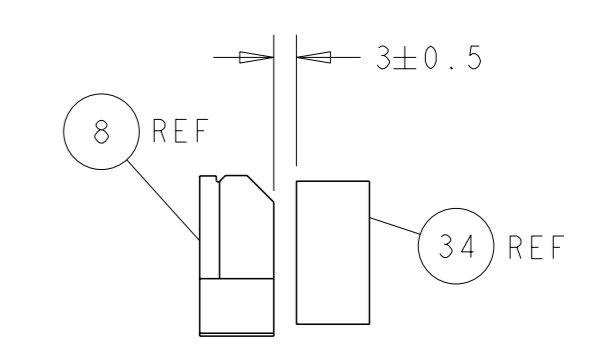
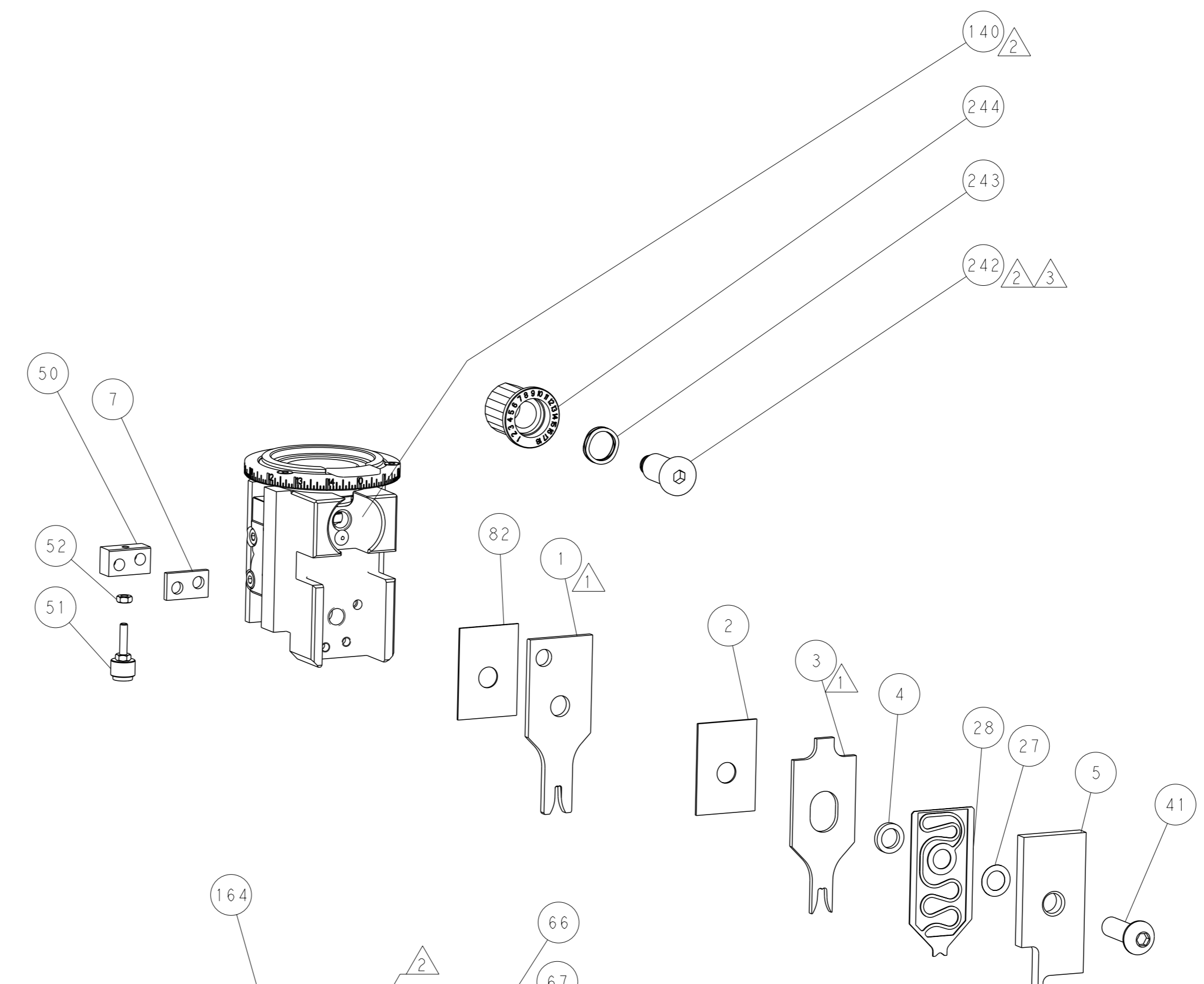
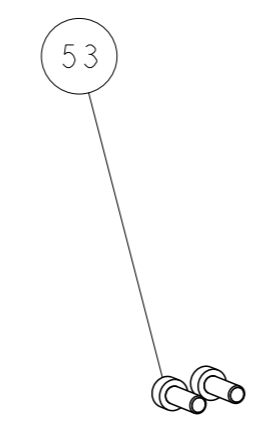
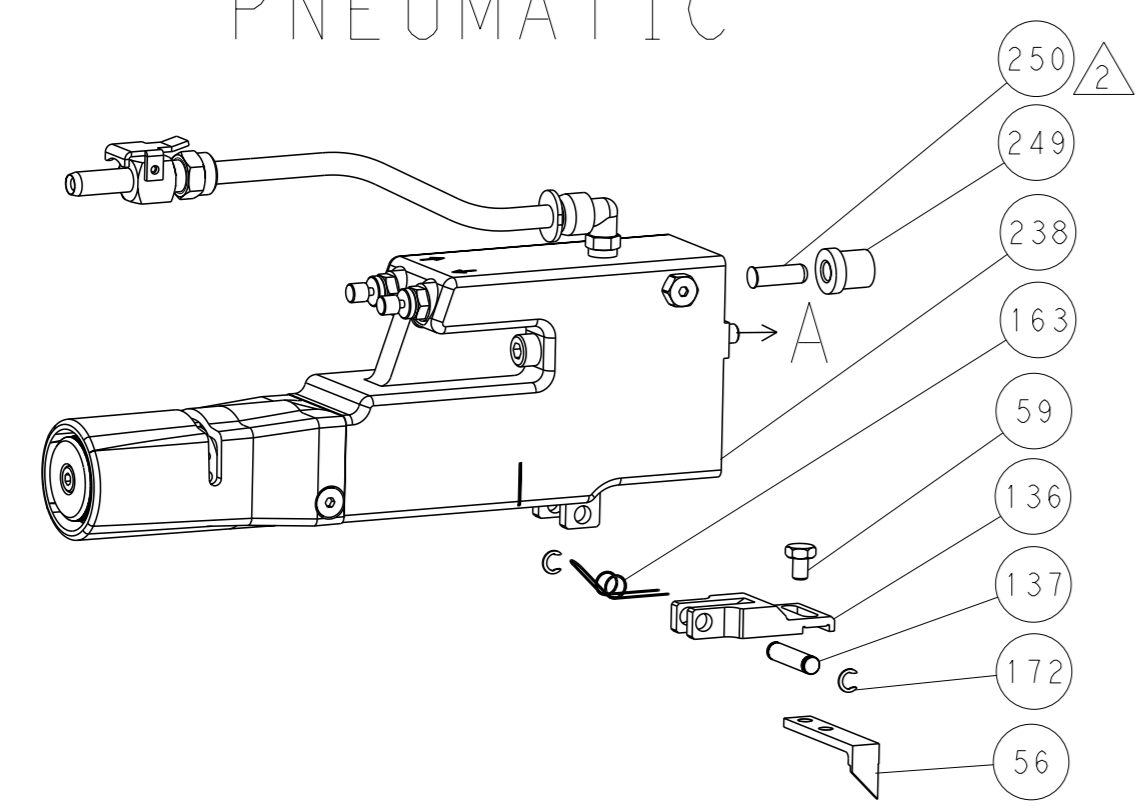
|   |  |  |   |
|---|--|--|---|
| <small>THIS DRAWING IS UNPUBLISHED. IT IS SUBJECT TO CHANGE AND THE USER SHALL CONTACT THE DESIGNATION SHOULD BE CONTACTED FOR THE LATEST REVISION.</small> |  | OWN X ZHAO 24AUG2015<br>CHK L ZHANG 24AUG2015<br>APVD U GUO 24AUG2015      | NAME<br><b>STE</b> TE Connectivity<br>Harrisburg, PA 17105-3608 |
| DIMENSIONS:<br>mm<br>   | TOLERANCES UNLESS OTHERWISE SPECIFIED:<br>0 PLC ±<br>1 PLC ±<br>2 PLC ±<br>3 PLC ±<br>4 PLC ±<br>ANGLES FINISH ± | PRODUCT SPEC<br>APPLICATION SPEC<br>WEIGHT<br>SCALE 1:2 SHEET 3 OF 4 REV D | SIZE CAGE CODE DRAWING NO<br>A1 00779 C=2266958                 |
| MATERIAL:   |  | Customer Accessible Production Drawing                                     |   |

| LOC | DIST | REVISIONS   |      |     |      |
|-----|------|-------------|------|-----|------|
| A   | 66   | REV         | DATE | OWN | APVD |
| -   | -    | SEE SHEET 1 | -    | -   | -    |

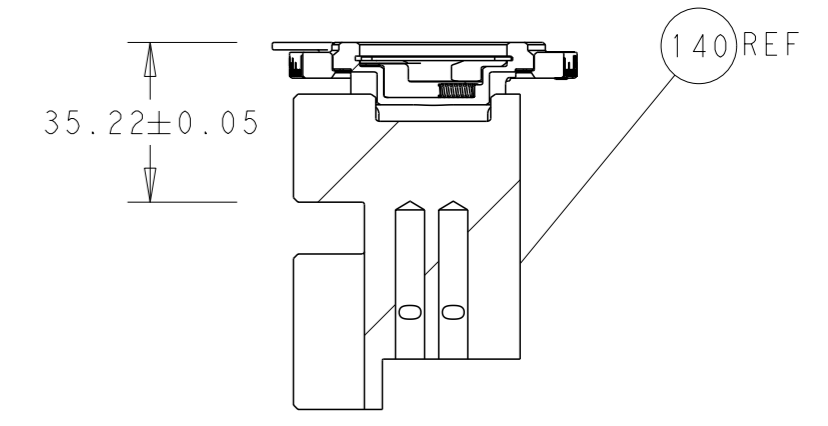
# FEED TYPE MECHANICAL



# PNEUMATIC

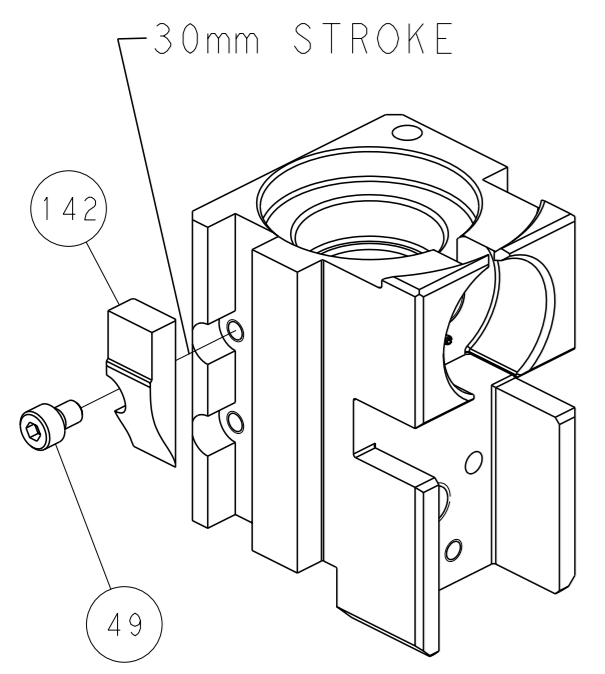


TERMINAL SUPPORT LOCATION

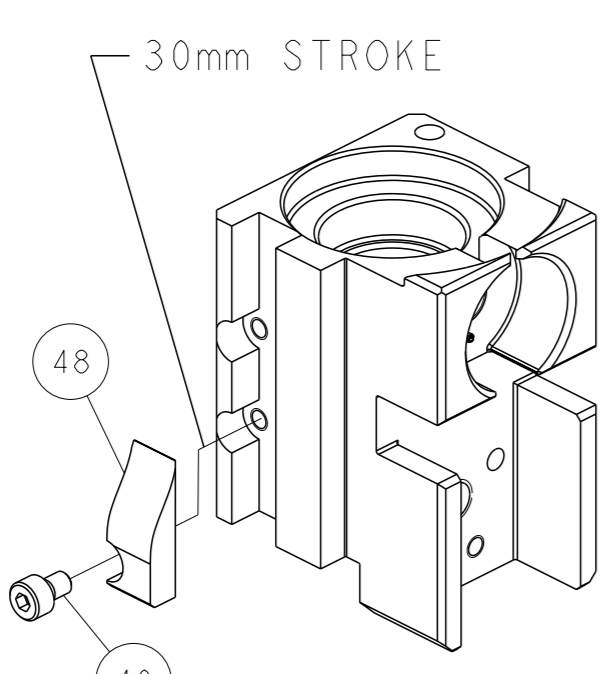


RAM SET-UP

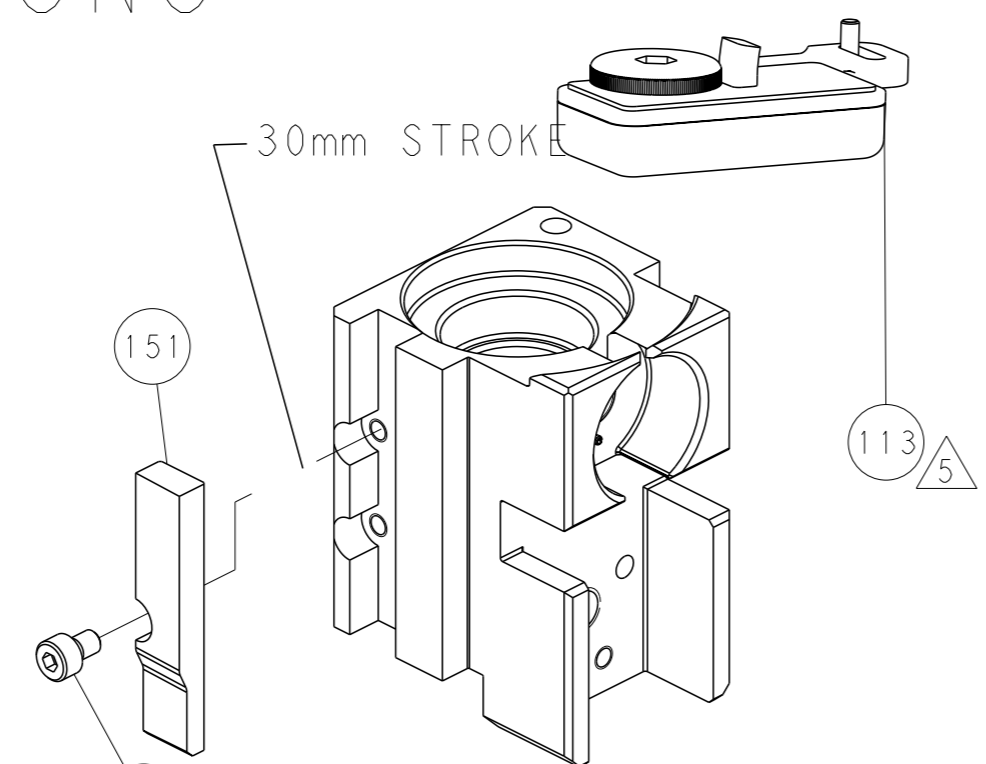
# CAM POSITIONS



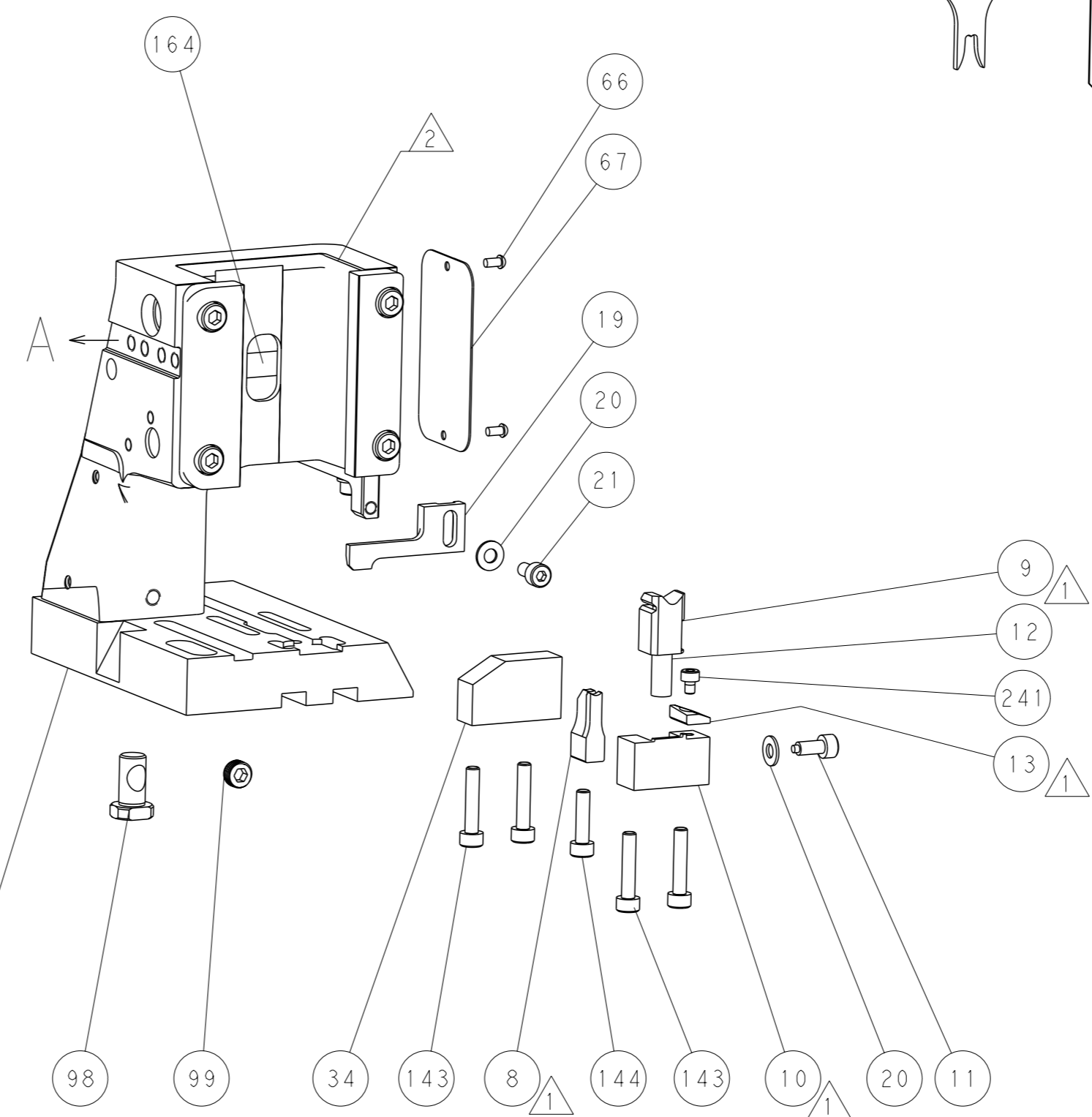
MECHANICAL POST FEED



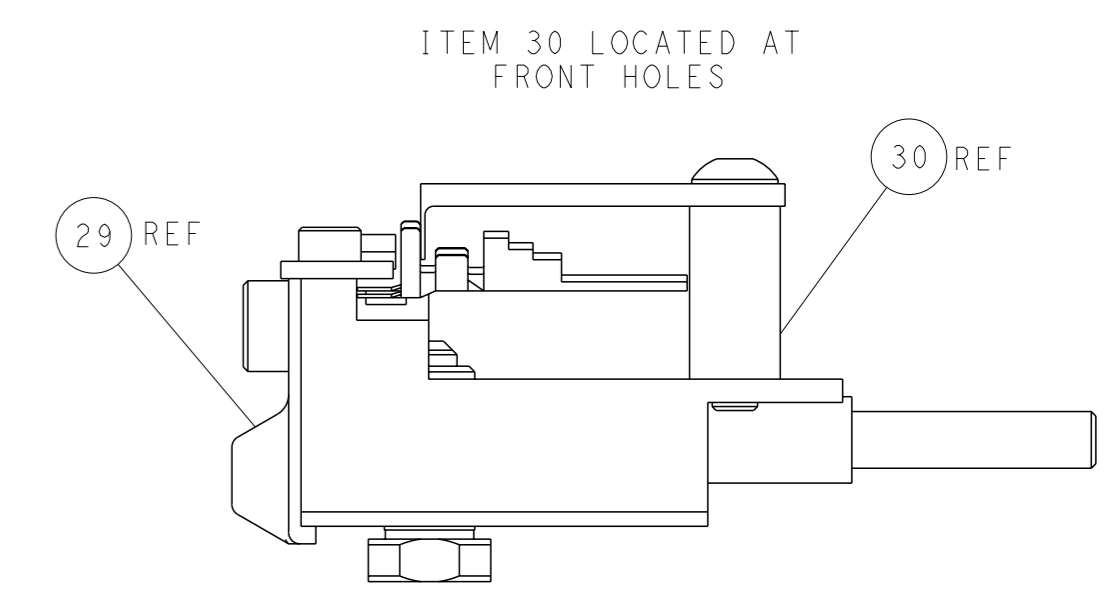
MECHANICAL PRE FEED



AIR FEED



**PACIFIC VERSION**  
 Shown on sheets 3 of 4 & 4 of 4  
 (Atlantic version shown on sheets 1 of 4 & 2 of 4)



FEED TRACK POSITION GUIDE BY INSULATION BARREL

|   |           |   |   |  |
|---|-----------|---|---|--|
| <small>THIS DRAWING IS A CONTROLLED DOCUMENT FOR TYCO ELECTRONICS CORPORATION. IT IS SUBJECT TO CHANGE AND THE CONTROLLER ENGINEERING ORGANIZATION SHOULD BE CONTACTED FOR THE LATEST REVISION.</small> |           | OWN: X. ZHAO<br>CHK: L. ZHANG<br>APVD: H. GUO | DATE: 24AUG2015<br>DATE: 24AUG2015<br>DATE: 24AUG2015 | NAME: TE Connectivity<br>Harrisburg, PA 17105-3608 |
| DIMENSIONS: mm<br>TOLERANCES UNLESS OTHERWISE SPECIFIED:<br>0 PLC ±<br>1 PLC ±<br>2 PLC ±<br>3 PLC ±<br>4 PLC ±<br>ANGLES FINISH ±  | MATERIAL: | PRODUCT SPEC:<br>APPLICATION SPEC:<br>WEIGHT: | SIZE: A1<br>CAGE CODE: 00779<br>DRAWING NO: C=2266958 | RESTRICTED TO:                                     |
| Customer Accessible Production Drawing  |           | SCALE: 1:2                                    | SHEET: 4 of 4   | REV: D   |